

Perimatic Premier Pump Dispenser

The Perimatic range of peristaltic pump dispensers are designed for rapid but controlled filling of a variety of containers without splashing or frothing.



// Microprocessor calibration

// Memory to store calibration values, volumes and set-ups for various tubing sizes

// Dispense speed control handles most liquids

// XY module interface, see page 72-73

// Preprogrammed user selectable languages

// Manual dispensing by hand or footswitch

// Automatic dispensing with interval timer

// Sequential slow/fast/slow dispensing

Perimatic Premier

The Perimatic Premier is a heavy-duty, microprocessor-controlled precision dispensing pump, ideally suited for rapidly and reproducibly filling a variety of containers including, vials, bottles, test tubes and Petri dishes.

The Premier achieves its high performance due to its precision rotor and pinch valve design. The Perimatic Premier is particularly suited to media dispensing as its 'stand-by' mode ensures constant recirculation of the reservoir contents, thereby keeping the media in suspension when not actively dispensing.

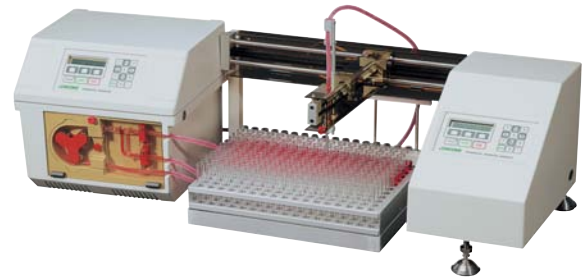
Specification

Dispensing range, ml	0.5 to 9999.9
Accuracy	±1.0% for volumes over 20ml
Repeatability	<1%
Max./Min. tube bore, mm	8/3
Tube wall thickness, mm	2
Pumping rate ¹ , ml/sec	2.1 to 33.3
Power (Dual selectable voltage)	220-240V/110V-120V 50/60Hz, 150W
Dimensions (l×w×h), mm	310×360×320
Weight, kg	16

Cat. No.	Description
256-005	Perimatic Premier pump dispenser

Supplied with three sets of tubing assemblies and footswitch.

1. Dependant upon tube bore and selected speed. Data is based on dispensing water at 21°C.



The Perimatic Premier can be used with an accessory robotic module designed to automate the filling of multiple containers by precision XY positioning of its stainless steel delivery nozzle, in any number of programmable fill patterns. See pages 72-73.

Premier Silicone Tubing Assemblies

Cat. No.	IDxOD, mm
256-031	3x7
256-032	5x9
256-033	8x12

Spare Silicone Tubing

Cat. No.	IDxOD, mm	Pack ²
686-203	3x7	1m
686-210	5x9	1m
686-216	8x12	1m

2. Available in lengths of up to 20m. For more details please contact us on +44 (0)1525 372010.

Accessories

Cat. No.	Description	Diameter, mm
256-113	Stainless steel delivery nozzle	3
256-114	Stainless steel delivery nozzle	5
256-115	Stainless steel delivery nozzle	8
256-050	Spare footswitch for Perimatic Premier dispenser	

Perimatic GP Pump Dispenser

The Perimatic range of peristaltic pump dispensers are designed for rapid but controlled filling of a variety of containers without splashing or frothing.

- // Microprocessor calibration
- // Memory to store calibration values, volumes and set-ups for various tubing sizes
- // Dispense speed control handles most liquids
- // XY module interface, see page 72-73
- // Preprogrammed user selectable languages
- // Manual dispensing by hand or footswitch
- // Automatic dispensing with interval timer
- // Sequential slow/fast/slow dispensing



Perimatic GP

The Perimatic GP represents a lower cost alternative to the Premier yet still offers many of its attractive features. Can also be used as a transfer pump in forward or reverse mode.

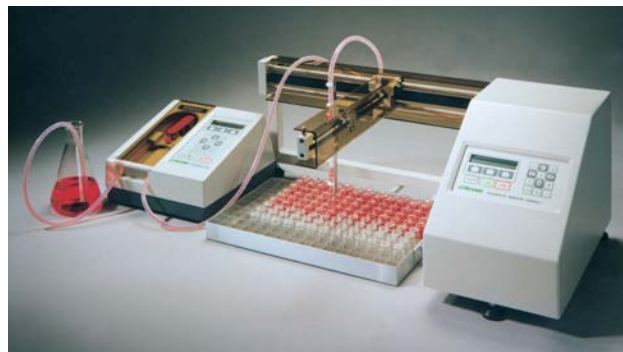
Specification

Dispensing range, ml	0.5 to 9999.9
Accuracy	±1.0% for volumes over 20ml
Repeatability	<1%
Max./Min. tube bore, mm	8/3
Tube wall thickness, mm	2
Pumping rate ¹ , ml/sec	2.1 to 22.0
Power	220–240V/110V–120V
(Dual selectable voltage)	50/60Hz, 90W
Dimensions (lxxh), mm	310x360x320
Weight, kg	7

Cat. No.	Description
256-026	Perimatic Premier pump dispenser

Supplied with three sets of tubing assemblies and footswitch.

1. Dependant upon tube bore and selected speed. Data is based on dispensing water at 21°C.



The Perimatic GP can be used with an accessory robotic module designed to automate the filling of multiple containers by precision XY positioning of its stainless steel delivery nozzle, in any number of programmable fill patterns. See pages 72-73.

Premier Silicone Tubing Assemblies

Cat. No.	IDxOD, mm
256-027	3x7
256-028	5x9
256-029	8x12

Spare Silicone Tubing

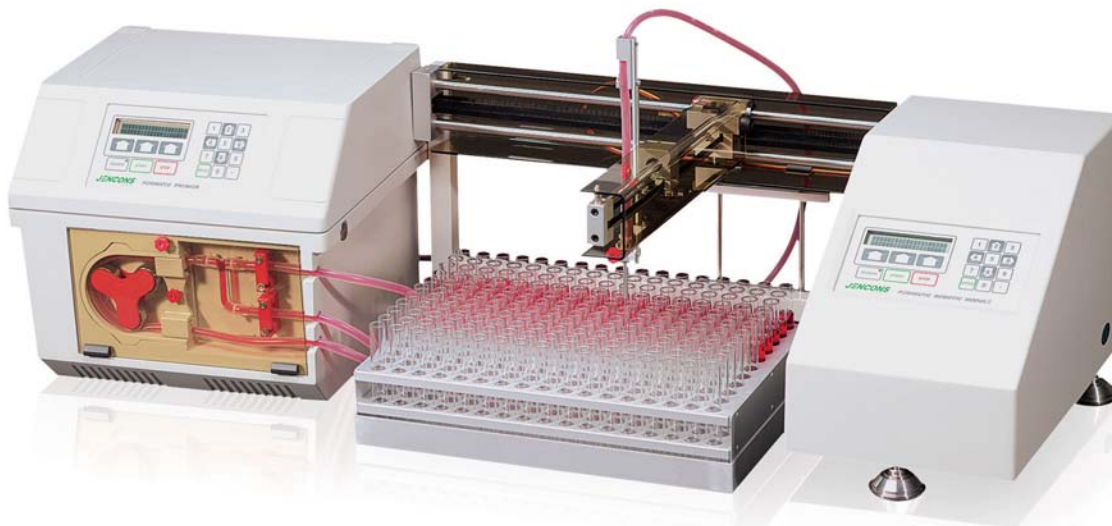
Cat. No.	IDxOD, mm	Pack ²
686-203	3x7	1m
686-210	5x9	1m
686-216	8x12	1m

2. Available in lengths of up to 20m. For more details please contact us on +44 (0)1525 372010.

Accessories

Cat. No.	Description	Diameter, mm
256-113	Stainless steel delivery nozzle	3
256-114	Stainless steel delivery nozzle	5
256-115	Stainless steel delivery nozzle	8
256-050	Spare footswitch for Perimatic GP dispenser	

Perimatic, Robotic XY Module



- // Microprocessor-controlled
- // New 'Settle Delay' ensures the nozzle comes to a complete standstill prior to dispensing
- // New tray guide is now adjustable to enhance position accuracy
- // Menu-driven LCD for fast programme changes
- // New 'Drip Delay' ensures any drips are contained before the X-Y moves to its next position
- // Preprogrammed user-selectable languages in English, French, German, Italian and Spanish
- // Manufactured to BSEN ISO 9002
- // A wide range of tube/bottle racks available; see accessories
- // Adjustable legs allow XY filling of test tubes up to 200mm high
- // Stainless steel precision dispense nozzles

Perimatic, Robotic XY Module

The Perimatic Robotic XY Module has been designed to automate the filling of a wide range of containers in conjunction with the Perimatic range of liquid dispensers.

These containers can be filled in straight rows or in 'honeycomb' pattern. The system can be programmed to memorise up to 50 fill patterns.

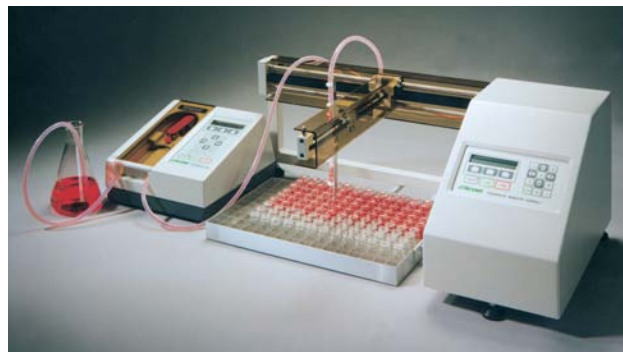
Specification

Speed, mm/sec	120 (max) excluding acceleration and deceleration times
Fill area, mm	400x245 (from fill nozzle centres)
Resolution, mm	Typically 0.25
Accuracy, mm	0.3*
Drip delay, second	0–9.9 seconds in 0.1 second increments
Settle delay, second	0.0 to 9.9
Fill points	99(X) and 99(Y)
Memory	Non-volatile. Stores up to 50 fill patterns
Input ports	RS232 interface (Baud rate selectable). Connector to Perimatic dispenser
Float switch	Inhibits dispensing if reservoir is dry
Electrics	220–240V and 110–120V (selectable) 50/60Hz; 40W
Dimensions (lwxhxh), mm	735x385x280 without dispensing unit
Weight, kg	14

* Accuracy is dependent on the weight of the tube set on the arm assembly and can range from 0.3 to 4mm across the whole fill area.

Cat. No.	Description
256-065	Perimatic XY Module
256-068	Perimatic Premier with XY Module
256-069	Perimatic GP with XY Module

The Perimatic XY is supplied complete with 3, 5 and 8mm stainless steel dispense nozzles.



Aluminium Sectioned Trays for Vials, Bottles and Tubes

All sectioned container trays and racks for the XY Module are 400x250mm (lxd) and are made of heavy gauge, anodised aluminium. All corners are welded to contain any spillages.

Cat. No.	To fit dia. mm	Capacity
256-070	12	570
256-071	13	522
256-072	14	416
256-073	16	322
256-074	18	273
256-075	20	228
256-076	24	160
256-077	30	104
256-078	32	77
256-079	36	60
256-080	40	54
256-081	49	40
256-082	60	24

Aluminium Sectioned Trays for Test Tubes

Cat. No.	Double platform tube rack	Capacity
256-095	For 10mm tubes up to 200mm high	345 tubes
256-096	For 16mm tubes up to 200mm high	187 tubes
256-097	For 16.5mm tubes up to 200mm high	187 tubes

Ask for details of stainless steel trays. Customised trays available.