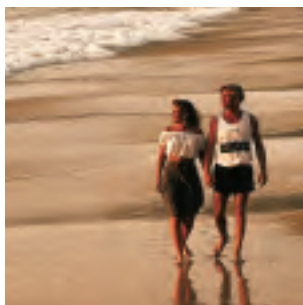
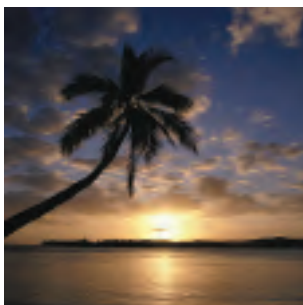
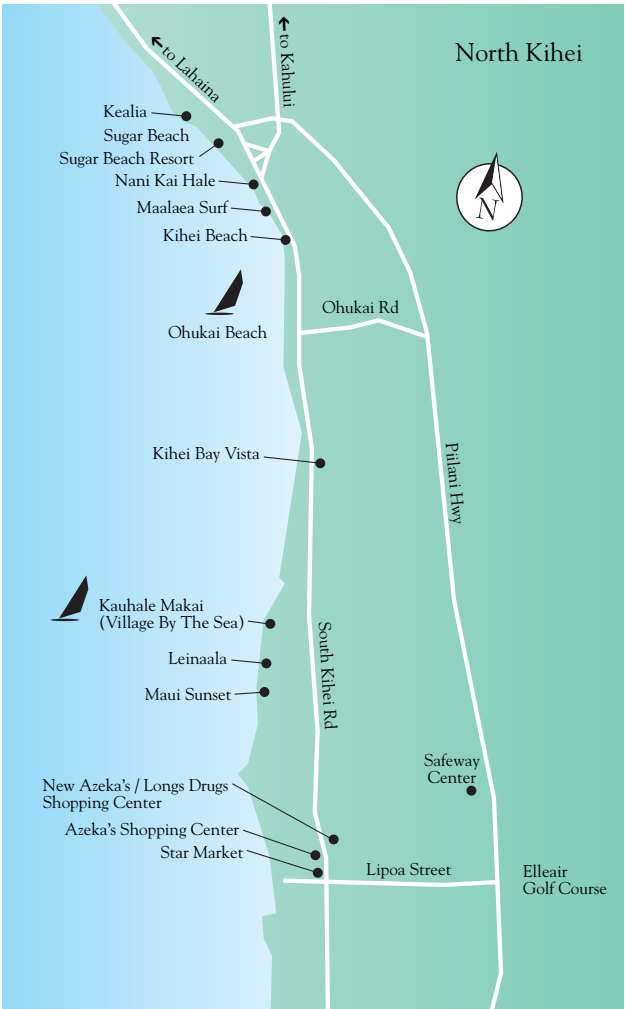


# MAUI CONDOMINIUM RENTALS



RESORT QUEST®  
VACATION HOME NETWORK  
HAWAII





Few places on earth are as blessed as Maui, a tropical island of legendary beauty and rich history. Even within the Hawaiian Islands it's referred to as "Maui No Ka Oi" or Maui is the best.

As a complement to an ideal climate, Maui has a variety of spectacular natural wonders. World-famous beaches, lush Iao Valley, Haleakala volcano, Molokini crater-island, pastoral Upcountry, the tropical Hana coast and Seven Pools are just a few of the fascinating sights.

The sports enthusiast will find great opportunities for championship golf, tennis, windsurfing, surfing, scuba, snorkeling, biking, hiking, and deep sea fishing.

Other popular activities include shopping in the old whaling port of Lahaina, whale watching and dining in Maui's many fine restaurants.

You might say it just doesn't get any better than this!

---

## SYMBOLS AND DEFINITIONS

ResortQuest Hawaii – Maui Condo and Home Realty, Inc. are committed to delivering quality and comfort to every guest, every time. That's why we carefully evaluate and inspect each property on a regular basis and have categorized our accommodations to further help you make your lodging selection. Following are the categories and their descriptions. Please look for the category symbol at the beginning of each property listing and refer to the definition below.



**Gold:** Upscale, well-appointed accommodations with a designer touch that includes excellent furnishings, special features, and top-quality kitchens, baths, and amenities.



**Silver:** Inviting, pleasing accommodations that are tastefully decorated and feature quality furnishings and contemporary kitchens and baths.



**Bronze:** Comfortable, pleasant accommodations that provide many of the comforts and conveniences of home.



---

K A H A N A R E E F

---

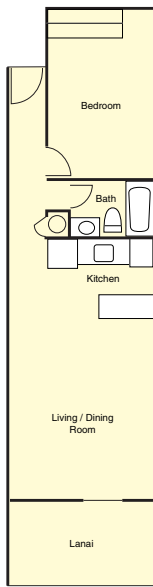


Kahana Reef condominium accommodations are located oceanfront in Kahana, Maui. Visit Maui and enjoy great views and clean tropical air in your oceanfront condominium. Relax in comfort at the edge of an inviting ocean. Add magnificent views and easy access to all that Maui has to offer and the Kahana Reef is your perfect



Hawaiian home. Each and every condominium suite has year-round views of the sunsets, rainbows and offshore islands. Maui's beautiful island scenery is legendary. With excellent activities, shopping and restaurants, Kahana is the perfect place for your family's Maui getaway. Every one of

our comfortably appointed condominiums is oceanfront. You'll experience spectacular sunsets, seasonal whale watching and beautiful ocean views... right from your room! Also, our guests delight in the use of the pool and barbecue, both located just steps from the surf. Each condominium unit at the Kahana Reef is completely furnished and generously appointed with modern



**One bedroom, One bath**  
*611 sq. ft. including lanai*

Individual units may vary.

appliances and comfortable furniture. These Studio and One Bedroom apartments feature ceiling fans, fully equipped kitchens (including dishwashers), and color television.





---

## K E A L I A

---

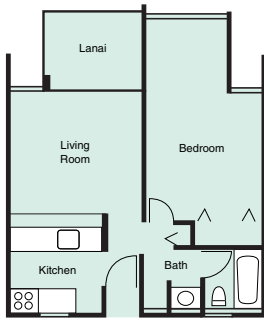


The beautiful Kealia Resort is located in north Kihei on Sugar beach, Maui's longest white sand beach. As a direct oceanfront property, you can relax on your private lanai with your morning coffee while you watch the whales frolicking offshore (in season). Later in the day, you can take a cool dip in the ocean or stroll along the beach searching for shells. It's all right

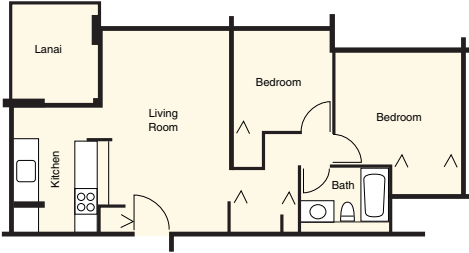


outside your door. If activities and shopping are on your Maui vacation "to do" list, you'll find the Kealia Resort conveniently located to both. A short 15-minute drive away is Ma'alaea Harbor Village with its shops, restaurants, and the Maui Ocean Center Aquarium. Many of Maui's snorkel and dive tour boats are also based at the harbor. The Kealia Resort also has a wide range of accommodations. Every one of our one and two bedroom condominiums offer fully equipped kitchens, cable TV, washers, dryers, and air conditioning.

---



**One bedroom, One bath**  
*610 sq. ft. including lanai*



**Two bedroom, One bath**  
*800 sq. ft. including lanai*

Individual units may vary.

The property also features an oceanfront swimming pool, barbecues, private parking, and an elevator. Come to Maui and relax at the Kealia Resort.





---

SUGAR BEACH RESORT

---



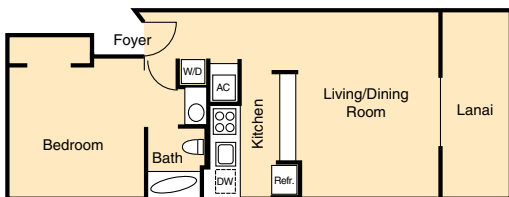
Sugar Beach Resort is aptly named as it enjoys a prime location on a beach of fine, light sand; sugar-like in its texture. Actually, the name is related to the growing of sugar cane on Maui. Just the same, Sugar Beach happens

to have miles of some of the best sand on the Valley Isle and you may want to get out on the beach for some long walks during your stay. Early morning sunrises and early evening sunsets will provide spectacular backdrops. You may also enjoy swimming, windsurfing, and whale watching (in season). After you have been out in the sun and surf, you will appreciate the



resort's central air conditioning. It is one of the few beachfront properties with this amenity. The oceanfront swimming pool is a great place to relax. There is also a wading pool, jacuzzi, tennis courts, putting green and barbecues. You will find a restaurant, shops and activities center on property. The resort has elevators and private parking. The interiors include fully equipped kitchens,





**One bedroom, One bath**  
*709 sq. ft. including lanai*

Individual units may vary.

cable TV, high speed internet (surcharge), telephone, washer/dryer and private oceanview or beachfront lanais. Your Sugar Beach Resort condominium will have either an oceanview or oceanfront location.





---

N A N I K A I H A L E

---

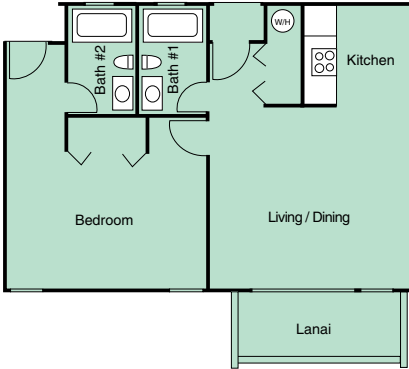


Nani Kai Hale, translates in Hawaiian to “house by the beautiful sea”. Its location on stunning Sugar Beach provides you with vistas of miles of uncrowded sandy beach and sparkling blue ocean. With Nani Kai Hale as your home base, you will easily access all types of



ocean sports, recreation and world-class beach strolling. It’s also convenient to shopping, restaurants, golf courses and many of Maui’s scenic attractions. Kahului Airport is about 25 minutes away. Your “house by the beautiful

sea” has a fully equipped kitchen, cable TV, telephone, laundry facilities on all floors, and your own private oceanview lanai. The Nani Kai Hale is a small property of six floors with an elevator and private parking. It has an excellent sandy beach, heated oceanfront pool and



**One bedroom, Two bath**  
*675 sq. ft. including lanai*

Individual units may vary.

barbecues. All units have air conditioning. You will enjoy the ocean and neighbor island views, especially during whale watching season.





---

## K I H E I B E A C H

---

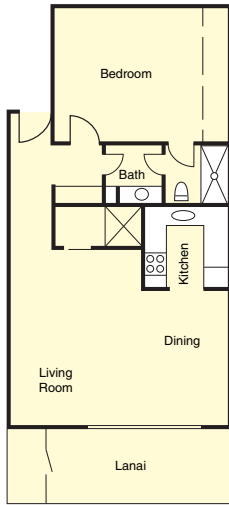


Kihei Beach is ideally located on one of Maui's beautiful white sand beaches. Each of the one or two bedroom

condominiums are complemented by a large, private beachfront lanai. Views extend out over the blue Pacific to the south, West Maui Mountains to the west, and majestic Haleakala, a 10,000 ft. high dormant volcano, to the east. All the condominiums at Kihei Beach are beachfront.



Conveniences include central air conditioning, cable television, telephone, microwave, large refrigerator-freezer, garbage disposal and dishwasher. Laundry facilities are available on property. The oceanside pool and the barbeque areas are favorite gathering places and a good place to meet interesting visitors from around the world. The beach here stretches some six miles, excellent for long walks in the sugary sand. To many, Kihei Beach is their version of "paradise found."



**One bedroom**  
**One bath**  
*700 sq. ft. including lanai*

Individual units may vary.





---

K I H E I B A Y V I S T A

---



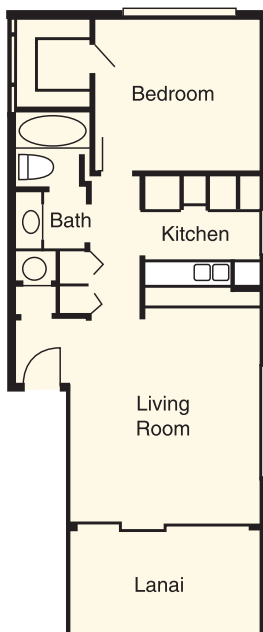
The four two-story buildings of Kihei Bay Vista surround a nicely landscaped courtyard. The property includes a swimming pool, jacuzzi, putting green, and gas BBQs. Each of the one bedroom, one bathroom condominiums have a Queen bed and a Queen sleeper sofa, sleeping up to four people. Also, a party of up to eight can be accommodated in two adjoining condos.



Sunny Kaleopolepo Beach Park is located right across the street from Kihei Bay Vista and provides a convenient access to surf and sand. This is often a great place to watch windsurfers flying across the waves.

These air conditioned units are well-equipped with coffee maker, toaster, microwave, blender, dishwasher, washer/dyer, two televisions/VCRs with remotes and cable, portable phone, a stereo system/CD player, and high speed internet (surcharge).





**One bedroom**  
**One bath**  
*700 sq. ft. including lanai*

Individual units may vary.





---

K A U H A L E M A K A I

---



Kauhale Makai, is Hawaiian for “Village By The Sea”. In this case, it’s an oceanfront resort. Like a village with a

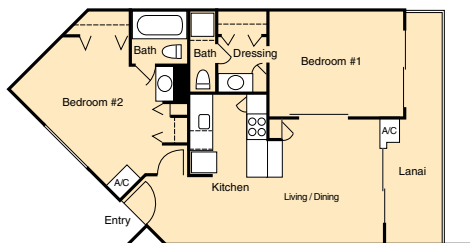


common meeting area, Kauhale Makai is arranged around its large park-like grounds and swimming pool. These also front the property to the ocean. The Village By The Sea is a quiet, family oriented, property which includes a wading pool, jacuzzi, sauna and barbecues. Kauhale Makai is comprised of two six

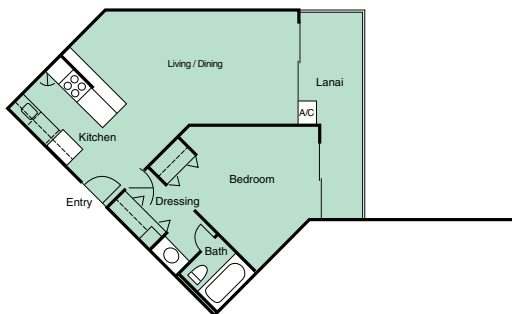
story buildings, with elevators, offering studio, one and two bedroom condominiums. There are shops, restaurants, golf courses, tennis courts and many of Maui’s scenic attractions a short drive away. You will find that the interiors of the condominiums at Kauhale Makai have been nicely furnished. There is central air conditioning, fully equipped kitchens, cable TV, telephone, laundry facilities on site, and private lanai. Most condominiums at this Village By The Sea have ocean or mountain views, some have garden views.

---





**Two bedroom, Two bath**  
*900-1,100 sq. ft. including lanai*



**One bedroom, One bath**  
*795 sq. ft. including lanai*

Individual units may vary.





---

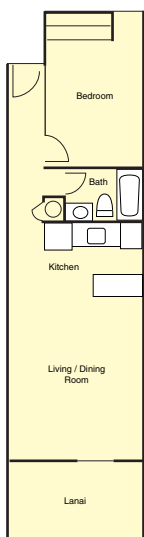
L E I N A A L A

---



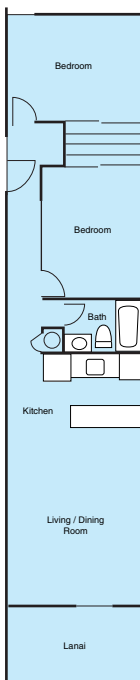
Leinaala is a smaller condominium resort that's big on features. This is a place where the tradition of the aloha spirit dwells and guests will always feel welcome as they enjoy the intimate, friendly atmosphere. Kihei's sunny shoreline is the setting

for Leinaala. Only twenty minutes drive from Kahului Airport, this oceanfront property is convenient to shopping, banks and a post office. Also in the area are fine restaurants and championship-caliber golf. Each of the condominium units enjoy stunning views of the Pacific Ocean and the West Maui Mountains. The modern conveniences are here, from air conditioning, to cable television, to fully appointed kitchens. Leinaala offers many recreational opportunities: swimming in the pool, tennis, fishing, windsurfing, beach combing, and seasonal whale watching. Or, some guests just prefer to relax on their lanai, entertained by another impressive Maui sunset as seen from their piece of paradise.



**One bedroom  
One bath**

*708 sq. ft. including lanai*



**Two bedroom  
One bath**

*925 sq. ft. including lanai*

Individual units may vary.





---

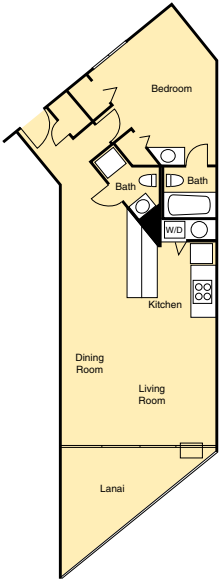
## M A U I S U N S E T

---

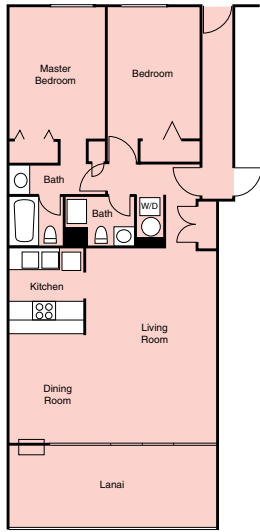


Maui Sunset. It's a good bet you will see some great Maui sunsets at this oceanfront property. Good sunset views are available from many of the condominiums and from the large, park-like lawn that fronts the property to the ocean. There are two, five story buildings, with elevators, offering one, two and three bedroom condominiums. You will enjoy the convenience to shopping, restaurants, golf courses, and tennis courts. The Maui Sunset resort is a quiet, expansive property and its amenities include a large swimming pool, jacuzzi, sauna, barbecues, and a weight room. If you want to windsurf, this is a popular place to launch your rig. The interiors of the condominiums are spacious and well-appointed with fully equipped kitchens, satellite TV, telephone, washer/dryer, air conditioning, and private lanais. Ocean and garden views are available for your enjoyment.





**One bedroom, Two bath**  
*793 sq. ft. including lanai*



**Two bedroom, Two bath**  
*1,136 sq. ft. including lanai*

Individual units may vary.





---

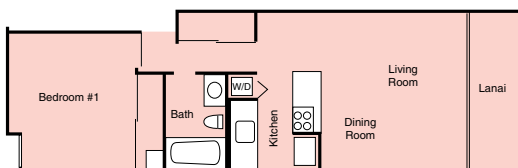
## M A U I V I S T A

---

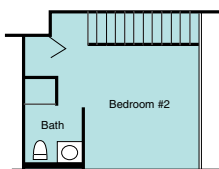
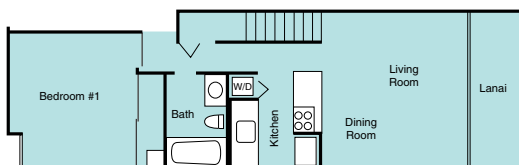


Maui Vista is a condominium complex in the heart of Kihei. It's near Kamaole Beach Park I. There are three, four story buildings, with elevators, offering you a choice of one and two bedroom floor plans. Each of the three buildings at Maui Vista resort has its own swimming pool, barbecues and two tennis courts. For your comfort and convenience, the interiors of the condominiums have fully equipped kitchens, cable TV, telephone, washer/dryer, and private lanais. Partial ocean and garden views are available for your enjoyment. All units have air conditioning. Kamaole Beach I provides great swimming, snorkeling, picnicking, sunset views, and whale watching (in season). You won't need to go far to find shopping, restaurants, golf courses and some of island's best sightseeing locations.





**One bedroom, One bath**  
*687 sq. ft. including lanai*



**Two bedroom, Two bath, Loft**  
*899 sq. ft. including lanai*

Individual units may vary.







---

R O Y A L M A U I A N

---

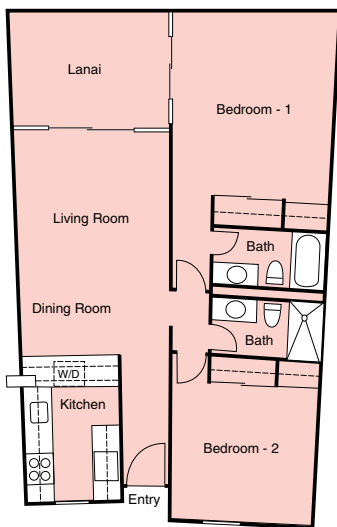


Royal Mauian has some unique features that helps keep it on top. For instance, a beautiful roof garden with a breathtaking 360 degree view, roof garden barbecues and refrigerated serving bar are among the features. Of course, being adjacent to Kamaole Beach I, one of Maui's best beaches, also helps keep the Royal Mauian popular. The resort amenities also include an oceanfront swimming pool, and lush tropical landscaping for your enjoyment. The resort has six floors, with elevators, offering one and two bedroom oceanview condominiums. The Royal



Mauian is close to shopping and restaurants and convenient to most of Maui's scenic attractions, golf courses, and Kahului Airport. The interiors of the condominiums include fully equipped kitchens, cable TV, telephone, and washer/dryer. The oceanfront lanais provide beautiful sunset views.





**Two bedroom, Two bath**  
*864 sq. ft. including lanai*

Individual units may vary.





---

K I H E I A K A H I

---

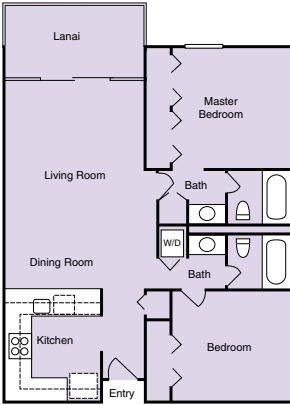


Kihei Akahi is a very popular resort. In Hawaiian, akahi translates to “number one”. Many visitors to Maui make this resort their number one choice for comfortable, convenient accommodations. It’s directly across from Kamaole Beach II, one of Maui’s finest beaches.

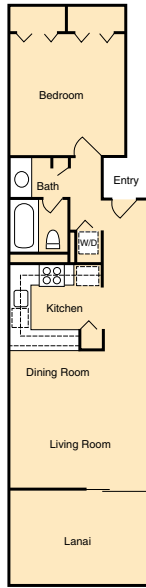
There are two, six story buildings, with elevators, and two, two story buildings offering studio, one and two bedroom condominiums. The Akahi is just steps away from shopping and



restaurants. The interiors are well-appointed and include fully equipped kitchens, cable TV, telephone, washer/dryer, and private lanais. Kamaole Beach II offers excellent swimming, snorkeling, sunset views, and whale watching (in season). Two swimming pools, tennis court, and barbecues are part of why visitors continue to make Kihei Akahi their number one choice in vacation accommodations.



**Two bedroom, Two bath**  
*879 sq. ft. including lanai*



**One bedroom,  
 One bath**  
*655 sq. ft.  
 including lanai*

Individual units may vary.





---

M A U I B A N Y A N

---



Maui Banyan is named after the stately banyan tree, one of the most beautiful trees of Hawaii, distinguished by the large, impressive canopy it creates. Maui Banyan resort is home to several of these majestic trees and is located across from Kamaole Beach II, one of Maui's finest beaches. Kamaole Beach II will provide your ocean

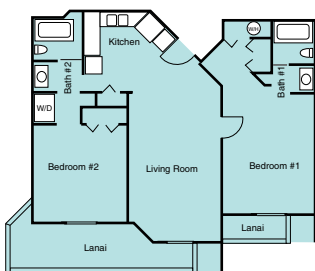


playground. When you move indoors, you will appreciate the fully equipped kitchens, cable TV, telephone, washer/dryer, air conditioning, and private lanai. The interiors of the condominiums are nicely decorated. The buildings are two, four and five floors,

with elevators in most buildings. You may chose one, two bedroom or three bedroom condominiums. It has two swimming pools, two jacuzzis, tennis court, and barbecues. You will be just steps away from shopping and restaurants, and convenient to many of Maui's scenic attractions, golf courses, and Kahului Airport.



**One bedroom, Two bath**  
*650 sq. ft. including lanai*



**Two bedroom, Two bath**  
*900 sq. ft. including lanai*

Individual units may vary.





---

M A U I P A R K S H O R E

---

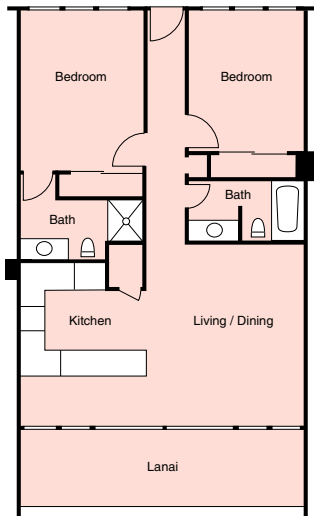


Maui Parkshore is located directly across from Kamaole Beach III, one of Maui's most popular beaches. All of the spacious condominiums have a 2 bedroom, 2 bath floor plan with large lanai. Most lanais offer ocean views of the blue Pacific. In the winter months, humpback whales



can often be seen frolicking with their offspring in the waters just off shore. When you are on vacation, life should be easy. Convenience is one of the keys to enjoyment at Maui Parkshore. The condominiums have all electric kitchens with dishwashers, cooking utensils and disposals. Appliances include washers and dryers as well as color televisions. Maui Parkshore has a convenient elevator and assigned off-street parking. Also, if you are interested in seeing more of beautiful Maui, tour arrangements can be made in-house. It's just one more feature that makes for a very special Hawaiian vacation at Maui Parkshore.





**Two bedroom, Two bath**  
*1060 sq. ft. including lanai*

Individual units may vary.





---

## K A M A O L E S A N D S

---



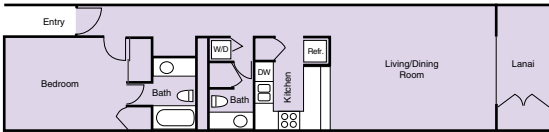
Kamaole Sands is a lush, 15 acre property set across from Kamaole Beach III. You will appreciate the open feeling of the layout at this complex. There are ten, four-story buildings, with elevators, offering one, two and three bedroom condominiums. The resort is close to shopping, restaurants, and several golf courses. You will find two

jacuzzis, a large pool, a wading pool, four regulation tennis courts, barbecues, and a restaurant on site at Kamaole Sands. This property is an excellent location for families. Kamaole Beach III is a beautiful sandy beach that is good for snorkeling, scuba diving, swimming, sunset views and whale watching. Families with

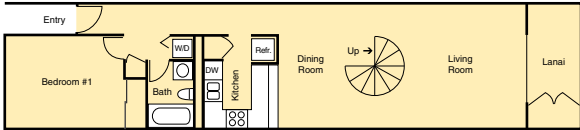
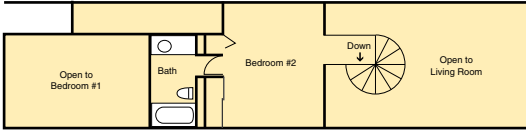


kids will want to visit the large park with a playground adjacent to the beach. Fully equipped kitchens, cable TV, telephone, high speed internet (surcharge), washer/dryer, and private lanais are among the amenities. All units have air conditioning in the living room.





One bedroom, Two bath  
*887 sq. ft. including lanai*



Two bedroom, Two bath, Loft  
*1,257 sq. ft. including lanai*

Individual units may vary.





---

M A U I K A M A O L E

---

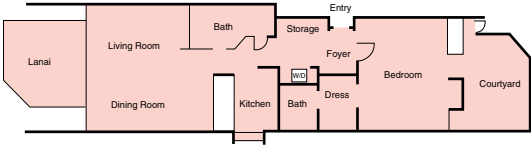


Maui Kamaole resort is Kihei's newest first-class property. It's directly across from its name sake, popular Kamaole Beach III. These condominiums are spacious one and two bedrooms. The complex is low rise, most with ocean

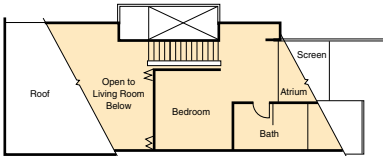
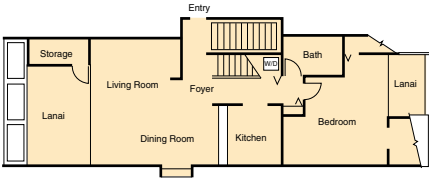
views framed by the islands of Lanai, Kahoolawe and Molokini. You will find it convenient to shopping, restaurants, golf courses, most of Maui's scenic attractions and Kahului Airport. Being a newer property, the interiors are in excellent condition and very well appointed with large, modern kitchens, designer furnishings,



air conditioning, washer/dryer, cable TV, high speed internet (surcharge), and private lanais. Amenities at Maui Kamaole include an activity center, tennis courts, swimming pool, jacuzzi and barbecues. Kamaole Beach III is a protected sandy beach and is excellent for swimming, snorkeling, sunset views and whale watching during the winter months.



**One bedroom, Two bath**  
*1,061 sq. ft. including lanai*



**Two bedroom, Two bath, Loft**  
*1,279 sq. ft. including lanai*

Individual units may vary.





---

K I H E I S U R F S I D E

---

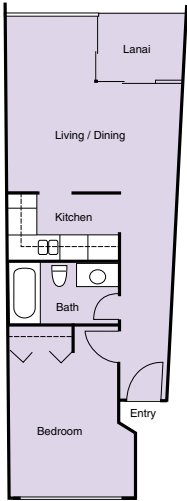


Kihei Surfside resort is an ocean front property, just steps from Wailea's first beach, Keawakapu. This beach is one of the most beautiful, sandy beaches on Maui. Kihei Surfside resort is a small, quiet complex, ideal for a honeymoon couple or for those that want privacy. When you choose

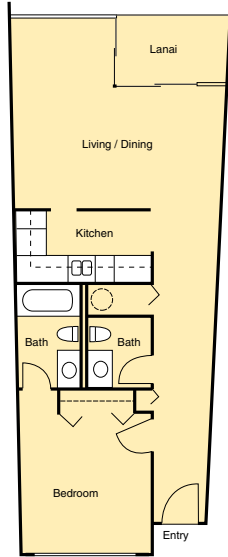


to leave the privacy of your one or two bedroom condo, a world of wonder awaits. With the surf crashing on the shoreline, the tropical flowers filling the air with their sweet fragrance, and the warm Hawaiian sun shining down on your shoulders, you will agree that Maui is *no ka oi* (the best). Inside, you will find fully

equipped kitchens, cable TV, telephone, laundry facilities on site, and a private lanai. All units have excellent ocean views- a good vantage point from which to whale watch (in season) and to view the inspirational sunsets. You are sure to enjoy the heated oceanfront pool. The barbecues and an expansive lawn area are also a favorite gathering place at Kihei Surfside.



**One bedroom**  
**One bath**  
*500 sq. ft. including lanai*



**One bedroom**  
**One & one half bath**  
*650 sq. ft. including lanai*

Individual units may vary.





---

## G R A N D C H A M P I O N S

---



Grand Champions Golf Villas is located on the Championship “Blue” Golf Course, and by the Wailea Tennis Club. Hawaii has some great destination areas

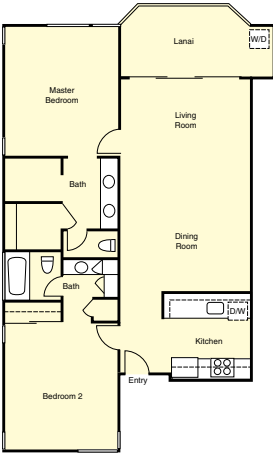


and Wailea consistently ranks at the top of the list. With its ideal year-round weather, white sand beaches, golf, tennis, shopping and world-class resorts, it has all the ingredients for an outstanding vacation.

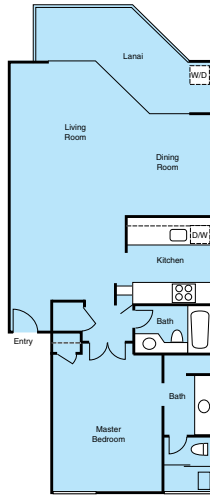
(Please ask about the special golf and tennis discounts).

The properties in Wailea have been built as a part of a master-planned resort community and it shows beautifully. Large green belts, manicured grounds and wide golf course fairways abound. To the north, views of Mt. Haleakala, the world’s largest dormant volcano. To the south, the sparkling blue Pacific. The interiors of Grand Champions are designer decorated with spacious living rooms. You will appreciate the European-style





**Two bedroom,  
Two bath  
1,056 sq. ft.  
including lanai**



**One bedroom,  
Two bath  
908 sq. ft.  
including lanai**

Individual units may vary.

kitchens, cable TV, telephone, high speed internet (surcharge), washer/dryer, air conditioning and private lanai. There are two pool and jacuzzi areas for your enjoyment.





---

W A I L E A

---

*The Palms*   *Wailea Ekolu*

---

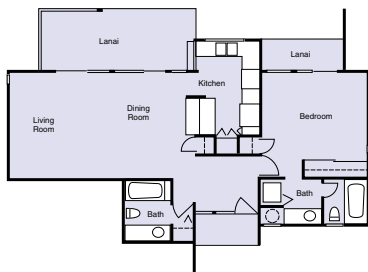
Wailea is the place where you can relax in the luxury and convenience of a worldclass resort and enjoy magnificent ocean and mountain views, manicured grounds, beautiful beaches, 54 holes of championship golf, and a shopping center. (Please ask about the special golf and tennis discounts).

The Palms at Wailea is a refreshing oasis in beautiful Wailea Resort. Each luxury suite offers a partial ocean or garden view from a spacious private lanai. The interior

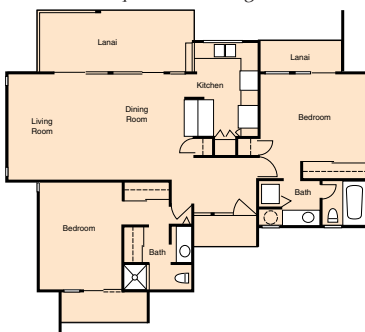


decor and furnishings are very tastefully appointed. Every convenience is available including modern kitchen, cable TV, videotape player, washer/dryer, and air conditioning. You will enjoy the free-form swimming pool and relaxing jacuzzi. The Wailea Ekolu Resort is located above the Championship “Blue” Golf Course. Most of these condominiums have ocean views. They are nicely





**Ekolu – One bedroom, Two bath**  
*1,067 sq. ft. including lanai*



**Ekolu – Two bedroom, Two bath**  
*1,313 sq. ft. including lanai*

Individual units may vary.

furnished with air conditioning, fully equipped kitchens, cable TV, telephone, washer/dryer, and private lanais for your enjoyment. There is a sunning deck with pool and barbecues.






---

S T A F F

---

The professional staff of Maui Condominium & Home Realty, Inc. provides a valuable service by placing the visitor in just the right vacation rental to suit their particular schedule, budget, lifestyle and activities interest. All of the vacation rental condominiums are fully furnished and well maintained for your comfort and enjoyment. From luxury to economy accommodations, we offer a wide selection of resorts to fit your individual requirements. We also offer vacation rentals in other Maui resorts not featured in this brochure. (See the enclosed rate card.) We hope you will find the preceding pages informative. Please keep in mind that we are here to provide service to you. If you have a particular request, just call and ask! Please note that Maui Condominium & Home Realty, Inc. is a full service Real Estate company, offering condominiums and homes for sale. For a vacation or a lifetime, we want you to enjoy beautiful Maui!

# South Kihei



South Kihei Rd

Kukui Mall

Foodland Shopping Center

Maui Vista

Kamaole One

Kamaole Beach I

The Royal Mauian

Kamaole Beach II

Kamaole Beach III

Kihei Surfside

Mana Kai

Keawakapu Beach

Wailea Ekahi

Renaissance Wailea Beach

Wailea Elua

Wailea Marriott Resort

Shops at Wailea

Grand Wailea

Four Seasons Wailea

Wailea Point

Kealani Hotel

Polo Beach Club

Dolphin Shopping Center

Rainbow Mall

Kamaole Shopping Center

Kai Nani Shopping Center

*Maui Condominium and Home Realty Inc.*

Kihei Akahi

Maui Banyan

Maui Parkshore

Kamaole Sands

Hale Kamaole

Maui Kamaole

Kilohana Dr

Pihani Hwy

The Palms At Wailea

Wailea Blue Course

Grand Champions

Tennis Center

Wailea Ike Dr

Wailea Ekolu

Wailea Gold & Emerald Courses

Wailea Alani Dr

to Makana



**RESORT QUEST**<sup>®</sup>  
VACATION HOME NETWORK  
HAWAII

Maui Condominium and Home Realty, Inc.  
*Property Management, Vacation Rentals, Real Estate Sales*  
P.O. Box 1840 / 2511 S. Kihei Road, Suite F  
Kihei, Maui, Hawaii 96753  
☎ USA / Canada Toll Free 1-800-822-4409  
Office 1-808-879-5445 Fax 1-808-874-6144  
Email [mauiinfo@resortquest.com](mailto:mauiinfo@resortquest.com)

***ResortQuestMaui.com***

