

### Armi Sport Creedmore Sights

These deluxe Creedmore Sights are manufactured for 1859, 1863, 1874 and 1875 Armi Sport Sharps rifles that have drilled and tapped tangs. They fit hole spacings of 2.260" to 2.265" center to center. These tang sights are adjustable for windage and elevation and are calibrated with a .040" diameter sighting hole on a 1-1/8" eyecup. Best results when used in conjunction with a front tunnel or front globe sight (sold separately).



Description	Finish	Product #	Price
700 Yard Mid-Range	Blue	391-200	\$164.99
1200 Yard Long-Range	Blue	257-550	\$164.99



### Browning Vernier Soule Sights

Vernier Soule Rear Sights feature minute of angle elevation, indexed screw windage adjustment and 3 peep diameters for short, medium and long range shooting. Sets include front globe sight with 8 interchangeable inserts and spirit level. Soule Rear Sights are stamped with the Browning logo and all of these sights are made in the USA.

Vernier Soule Sight Sets	Finish	Product #	Price
1885 Browning, Uberti, Winchester	Blue	951-046	\$359.99
Ballard (Pictured)	Blue	994-857	\$359.99
Remington Rolling Block	Blue	852-572	\$359.99
Shiloh Sharps	Blue	768-803	\$359.99
Spirit Level Front Sight (Only)	Finish	Product #	Price
Windage Adjustable 3/8" Dovetail	Blue	271-243	\$229.99
Windage Adjustable 7/16" Dovetail	Blue	174-737	\$229.99
3/8" Dovetail	Blue	230-567	\$109.99
7/16" Dovetail	Blue	186-274	\$109.99

### Lyman Lyman 90 MJT Target Receiver Sight

Designed to mount on a target-style mounting block, this sight features audible click detents, target knobs scribed in 1/4 minute graduations and elevation and windage arrows. Adjustable zero scales and elevation stop screw permit return to pre-established zero point, and quick release allows slide to be removed. Elevation adjusts from 1.060" to 1.560" above bore centerline. Includes 7/8" diameter non-glare target disc with .040" aperture. Black anodized aluminum body with blue steel target knobs and detent balls. Sights require mounting blocks (sold separately).



Sight	Product #	Price
Right Hand	863-452	\$69.99
Mounting Block	Product #	Price
15/16" Receiver	604-728	\$10.49
1" Receiver	599-428	\$11.29

### Lyman #2 Tang Sights

Constructed of steel with height index marks on the aperture post. Includes a .093" diameter hunting aperture and a .040" diameter target aperture. Also includes a replacement rear stock screw and front tang screw. The Marlin model features a special adapter which allows mounting on the tang without damaging the serial number. Please note that Marlin lever actions will need to be drilled and tapped before mounting. Will not fit models with a tang safety.



Description	Finish	Product #	Price
Marlin 30, 336, 1894, 1895	Blue	424-684	\$67.99
Winchester 1885, 1887, 1890, 62, 62A, 1894 (Pictured)	Blue	546-951	\$67.99
Winchester 1886	Blue	369-774	\$67.99

### Lyman 57 and 66 Receiver Sights

Sights feature 1/4 minute audible click micrometer windage and elevation adjustments as well as low-profile stayset knobs. The quick-release slide allows quick removal and replacement. Includes a large hunting aperture and a small target aperture. Black anodized aluminum body with blue steel knobs and detents.

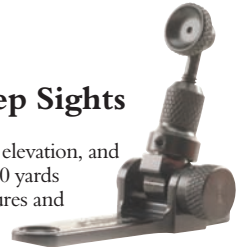


Product #	Price
57	
Winchester 52	686-263 \$66.99
Lyman Great Plains	726-378 \$66.99
Mauser, Springfield, Sako	771-395 \$66.99
Mauser, Springfield with Target Knobs	457-463 \$66.99
Remington 700, Winchester 70, Savage 110	278-103 \$66.99
Lyman Deerstalker and Trade Rifle, T/C Hawken	348-560 \$66.99
66	
Knight Mark 85	178-250 \$66.99
Marlin 336, 1894	116-045 \$66.99
Marlin 39A (Pictured)	122-655 \$66.99
SKS	582-935 \$66.99
Winchester 94 Blue (Except Big Bore)	716-636 \$66.99
Winchester 1886	723-962 \$66.99



### Marble's Tang Peep Sights

These steel sights are fully adjustable for windage and elevation, and each click equals approximately 4/10" movement at 100 yards (varies with sight radius). Complete with three apertures and mounting screws.



Description	Finish	Product #	Price
1874 Sharps by American Arms	Blue	110-318	\$124.99
1874 Sharps by Armi San Marcos EMF Taylor	Blue	466-302	\$124.99
#8 Ballard Union Hill, Marlin Original Models 25, 27, 29, 39A, 1889, 1892, 1897, Savage 30G Favorite	Blue	112-775	\$124.99
30G Steven Favorite New Production	Blue	239-726	\$124.99
Browning 53, 65, 1892	Blue	114-804	\$124.99
Browning 71	Blue	118-327	\$124.99
Browning 71LT	Blue	118-334	\$124.99
Browning 78, 1885 Without Tang H&R Buffalo Classic, Springfield 1870	Blue	118-542	\$124.99
Browning, Uberti, Winchester 1885 High Wall (Current Production with Tang), Thompson Contender Scout (Pictured)	Blue	818-667	\$124.99
Browning 1886 Winchester 1886	Blue	122-704	\$124.99
Browning 1892 Tang Safety, Winchester 1892 Tang Safety	Blue	465-055	\$124.99
Browning 1895, Winchester 1895 Tang Safety	Blue	122-864	\$124.99
Browning 1895 Original	Blue	125-036	\$124.99
Cimarron 1866, Uberti 1866	Blue	130-024	\$124.99
Cimarron 1873, Uberti 1873	Blue	130-657	\$124.99
Colt Lightning Small Frame	Blue	131-607	\$124.99
Marlin 39AS, 1894, 1897 CB, Glenfield 30	Blue	686-681	\$124.99
Henry 22 Golden Boy	Blue	131-854	\$124.99
Marlin 30, 336, 444, 1895	Blue	123-620	\$124.99
Marlin 1894 Original	Blue	133-764	\$124.99
Marlin 1897 Annie Oakley	Blue	134-151	\$124.99
NEF Survivor	Blue	134-246	\$124.99
Remington 1, 2, 5	Blue	135-512	\$124.99
Remington RBI, Uberti Rolling Block	Blue	137-294	\$124.99
Rossi 59, 62	Blue	138-738	\$124.99
Rossi 65, 1892	Blue	140-573	\$124.99
Savage 1899	Blue	140-614	\$124.99
Shiloh Sharps 1874	Blue	141-305	\$124.99
Taurus M62, Winchester 9422 22 Magnum	Blue	145-010	\$124.99
Uberti Henry	Blue	145-246	\$124.99
Uberti 1892	Blue	146-045	\$124.99
Varner 22 Caliber Favorite	Blue	166-760	\$124.99
Winchester 53, 55, 64, 65, 1892, 1894	Blue	174-097	\$124.99
Winchester 62, 1906	Blue	163-762	\$124.99
Winchester 71	Blue	157-632	\$124.99
Winchester 71LT	Blue	168-948	\$124.99
Winchester 1866, 1873	Blue	170-710	\$124.99
Winchester 1876, 1886 Original	Blue	618-343	\$124.99
Winchester 1885 Low-Wall	Blue	180-159	\$124.99
Winchester 1885 Original	Blue	174-037	\$124.99
Winchester 1876, 1886 Original	Blue	618-343	\$124.99
Winchester 1886 Tang Safety	Blue	174-127	\$124.99
Winchester 62, 1906	Blue	163-762	\$124.99
Winchester 9422 22 Long Rifle	Blue	174-687	\$124.99



### NECG Rear Peep Sights

These steel sights attach to scope bases and include 2 elevation slides: 1 flat bottom for use with flat or slightly channeled bases and 1 extended for use with deeply channeled bases. Also includes 2 aperture discs: .93" and .125".



Description	Finish	Product #	Price
Weaver-style Base (Pictured)	Blue	111-883	\$79.99
Ruger-Style Base	Blue	662-895	\$79.99



### Taylor's & Company Creedmore Sights

These sights come finished to match many early guns and reproductions. Be sure to measure screw hole spacing before ordering to ensure proper fit. Short Range Sights are adjustable for elevation only, while the Long Range Sights are adjustable for both windage and elevation.



Short Range	Finish	Product #	Price
1-1/2" Spacing	Blue	112-093	\$77.99
2-1/4" Spacing	Blue	514-455	\$74.99
Long Range	Finish	Product #	Price
1-1/2" Spacing	Case Colored	464-388	\$82.99
1-1/2" Spacing	Blue	217-192	\$77.99
2-1/4" Spacing (Pictured)	Case Colored	501-846	\$79.99
2-1/4" Spacing	Blue	433-740	\$74.99



### Thompson Center Hunting-Style Tang Peep Sight

This all steel sight is fully adjustable for windage and elevation. All adjustments lock securely. Requires drilling and tapping of one hole and is for use with a bead-style front sight. Fits Hawken, Renegade, Big Boar, White Mountain Carbine and Pennsylvania Hunter.



# 620-637	\$47.99
-----------	---------



### Williams 5D Receiver Sights

Lightweight aluminum Williams 5D Receiver Sights are designed for rugged use and feature positive windage and elevation locks. Please note that the receiver must be drilled and tapped for installation.



Description	Finish	Product #	Price
American Krag	Matte	957-258	\$34.99
Arisaka, Enfield, Mauser 98, Springfield 03, Remington 700 LH, Daisy 99, 299	Matte	596-340	\$34.99
British Lee Enfield # 1, 4, 5	Matte	326-669	\$34.99
New Model Marlin Centerfire Lever Action with Factory Scope Mount Holes	Matte	774-488	\$34.99
Marlin 39A	Matte	187-449	\$34.99
Remington 1100, 870, Ithaca 37, Most Flat-Sided Receiver Pumps and Auto Shotguns	Matte	117-419	\$34.99
Remington 510, 511, 512, 513, 521T	Matte	479-543	\$34.99
Remington 742, 760, 572, 552	Matte	164-718	\$34.99
Ruger 44 Carbine, Ruger 10/22 (all models) including Ruger 10/22 Mag	Matte	710-467	\$34.99
Springfield 1903A3	Matte	664-750	\$34.99
Winchester Top Eject 94, 64, 9422, Marlin 36, 336, 1894 (Pre 2001) and 1895 (Pre 1994) (Pictured)	Matte	583-902	\$34.99
Winchester 94 Angle Eject (Except Big Bore)	Matte	893-394	\$34.99
Winchester 70, Remington 700, Mossberg 800	Matte	681-133	\$34.99

### Williams FP Receiver Sights with Front Fire Sight

Sights feature no-snag micrometer click adjustments and a matching super bright red fiber optic front Fire Sight. The Winchester 94 and Marlin 336 Top Eject model may require drilling and tapping.



Description	Finish	Product #	Price
Marlin 336, 1894 (Installs at Rear Scope Mounting Holes)	Matte	799-753	\$67.99
Marlin 450	Matte	199-299	\$58.99
Winchester 94 and Marlin 336 Top Eject (Pictured) Includes Winchester and Marlin front sights.	Matte	712-881	\$58.99
Winchester 94 Angle Eject	Matte	825-978	\$58.99

### Williams FP-Target Receiver Sights

These Williams Sights have positive click adjustments with target knobs. The High sight is recommended for use with globe front sights, and the Low is recommended with standard front sights. The Deluxe model offers two mounting positions for more precise eye relief. All have target knob adjustment screws with white line reference markings, push button release for quick removal of top portion of sight and a support set screw for easy return to original position. Requires attaching base (sold separately).



Description	Finish	Product #	Price
Low 3/4" to 1-1/4"	Matte	280-201	\$67.99
High 1-1/4" to 1-3/4"	Matte	864-240	\$67.99
Deluxe 1-1/4" to 1-3/4"	Matte	510-077	\$78.99

### Williams FP-Target Attaching Bases



These aluminum bases are required for use with FP-Target receiver sights. Available for many popular rifles, these bases require drilling and tapping of the receiver.

Description	Finish	Product #	Price
Remington Models 510, 511, 512, 513-T, 521-T (Pictured)	Matte	810-587	\$17.49
Remington Models 540X, 541-S, 580, 581, 582	Matte	110-629	\$17.49
Savage/Anschutz Models 64 and Mark 12	Matte	663-892	\$17.49
Winchester Model 75	Matte	669-672	\$17.49

### Williams FP Receiver Sights

Williams FP Receiver Sights have internal micrometers for a click-at-a-time adjustment and are made from rust-free aluminum. Please note that your rifle's receiver may require drilling and tapping for installation.



Description	Finish	Product #	Price
Air Guns and 22 Rifles with Dovetail Receivers and Low Line of Sights (Pictured)	Matte	319-728	\$58.99
Air Guns and 22 Rifles with Grooved Receiver and High Line of Sights	Matte	887-016	\$58.99
American and Norwegian Krag	Matte	714-214	\$58.99
Anschutz Target Receiver Sight	Matte	568-729	\$58.99
British Lee Enfield No. 1, 4, 5	Matte	516-050	\$58.99
Browning, Mauser, Remington 700 Left Hand Bolt Action	Matte	648-656	\$42.99
Browning 1885 Single Shot	Matte	637-595	\$58.99
Browning A-Bolt	Matte	445-574	\$58.99
FN, Dumoulin, Mark 10 Mausers	Matte	779-764	\$58.99
Marlin Centerfire Lever Actions	Matte	968-159	\$58.99
Marlin 39A Lever Action	Matte	546-219	\$58.99
Marlin 9 and 45 Carbines	Matte	158-055	\$58.99
Military Mauser, Husqvarna, Weatherby Mark 5 and BRNO without Dovetailed Receiver	Matte	127-896	\$58.99
Modern Muzzleloading Knight Legend, Wolverine, DISC, Big Horn, American, T-Bolt	Matte	128-818	\$58.99
Modern Muzzleloading Knight MK-85	Matte	146-652	\$58.99
New Winchester Model 70 with High Sight Line, Remington 700, Mossberg 800 and Howa Model 1500	Matte	832-662	\$58.99
Remington 600, 660 Bolt Action, XP-100	Matte	966-560	\$58.99



### Williams FP Receiver Sights (continued)

Description	Finish	Product #	Price
Ruger 77	Matte	719-003	\$58.99
Remington 7400, 4, 7600, 6	Matte	261-141	\$58.99
Remington 742, 572 BDL, 552 BDL	Matte	210-965	\$58.99
Remington 870, 1100, 11-87, Browning BPS, Ruger Mini-14 Ranch Rifle	Matte	697-744	\$58.99
Ruger #1, #3	Matte	405-068	\$58.99
Ruger 10/22, 10/22 Magnum, Carbine, Deerfield Carbine 96/22, 96/22 Magnum, 96/44	Matte	483-133	\$58.99
Ruger Model 77 ML	Matte	564-671	\$58.99
Savage 110 Bolt Action RH and LH	Matte	563-581	\$58.99
Savage 99 with Top Safety	Matte	678-412	\$58.99
T/C Contender with Blade	Matte	791-618	\$64.99
Springfield 1903, 1903A3	Matte	638-382	\$58.99
T/C Contender Handgun, Carbine	Matte	527-166	\$58.99
T/C Encore, Omega, G2, Scout	Matte	115-737	\$58.99
Thompson Center Contender Handgun and Carbine with Target Knobs	Matte	971-684	\$58.99
White Systems Whitetail	Matte	716-993	\$58.99
Winchester 70, 54 and Remington 721, 722, 725	Matte	497-782	\$58.99
Winchester 71, 86, 05, 07, 10, 95 and Browning Centerfire Lever Action	Matte	649-318	\$58.99
Winchester 94 Big Bore 375 Winchester and 94 Big Bore Angle Eject	Matte	249-848	\$58.99
Winchester Top Eject 94, 55, 63, 64, 65, 9422 Marlin 36, 336, 444, 44 Magnum, 93, 1895, 1895G and Sears Centerfire	Matte	198-988	\$58.99
Winchester 94 Angle Eject	Matte	180-676	\$58.99
Winchester Big Bore Angle Eject 307 and 356 Winchester	Matte	225-563	\$58.99
Winchester Model 12, Most Flat-Sided Receiver Pumps and Autos	Matte	926-777	\$58.99
White Systems H&R Buffalo Classic and Handi Rifles	Matte	165-204	\$58.99
White Systems H&R Buffalo Classic and Handi Rifles with Target Knobs	Matte	572-292	\$67.99

### Williams Big Game Aperture

Apertures have a large opening similar to a ghost ring sight. Perfect for big game hunting and use in poor lighting conditions.



Description	Finish	Product #	Price
FP Aperture	Blue	266-485	\$8.69
5D Aperture (Pictured)	Blue	875-027	\$8.69

### Williams Apertures

Williams Apertures feature steel construction and offer a standard thread size that will work with Williams, Redfield and Lyman sights. WGRS apertures have a long shank to fit the WGRS receiver sight. Twilight apertures create a sharp contrast and are designed for shooting under poor light conditions. The fraction is the outside diameter of the metal aperture, and the decimal is the diameter of the hole drilled through the aperture.



Regular	Finish	Product #	Price
3/8" x .050"	Blue	324-116	\$6.29
3/8" x .093"	Blue	824-695	\$6.29
3/8" x .125"	Blue	917-413	\$6.29
3/8" x .150"	Blue	995-749	\$6.29
1/2" x .050"	Blue	811-431	\$6.29
1/2" x .093"	Blue	170-738	\$6.29
1/2" x .125"	Blue	174-048	\$6.29
1" x .050" (Target)	Blue	166-087	\$8.39
Twilight	Finish	Product #	Price
3/8" x .050"	Blue	812-365	\$8.79
3/8" x .093"	Blue	641-211	\$8.79
3/8" x .125"	Blue	380-255	\$8.79
3/8" x .150"	Blue	138-356	\$8.79
WGRS Regular	Finish	Product #	Price
3/8" x .050"	Blue	664-155	\$6.29
3/8" x .093"	Blue	194-694	\$6.29
3/8" x .125"	Blue	286-297	\$6.29
3/8" x .150"	Blue	726-178	\$6.29

### Williams Apertures (continued)

WGRS Twilight	Finish	Product #	Price
3/8" x .050"	Blue	671-478	\$8.79
3/8" x .093"	Blue	348-075	\$8.79
3/8" x .125"	Blue	384-348	\$8.79
3/8" x .150"	Blue	510-431	\$8.79

### Williams WGRS Guide Receiver Sights

These compact, low profile sights are made from lightweight aluminum and have positive windage and elevation locks. In most cases the sight utilizes the dovetail or existing screws on top of the receiver for installation.



Description	Finish	Product #	Price
Browning BAR, BLR	Matte	191-766	\$34.99
CVA Rifles With Octagon Barrel or Receiver	Matte	783-162	\$34.99
CVA Rifles With Round Barrel and Receiver and Winchester X-150 Muzzleloaders	Matte	715-669	\$34.99
H&R 158, 258 Topper Single Shot Rifles, Ruger Mark 2 22 Auto Handgun Receiver	Matte	698-217	\$34.99
Knight DISC and T-Bolt	Matte	863-449	\$34.99
M1 Carbine (Fits Dovetail)	Matte	310-841	\$34.99
Modern Muzzleloading Legend and Wolverine	Matte	202-630	\$34.99
Modern Muzzleloading MK-85, Savage M-110	Matte	257-146	\$34.99
Marlin Lever Actions	Matte	681-364	\$34.99
Octagon Barrels Flat Base	Matte	696-612	\$34.99
Remington 700, Howa 1500	Matte	594-607	\$34.99
Remington 742, 760	Matte	563-119	\$34.99
Remington 4, 7400, 6, 7600	Matte	324-750	\$34.99
Ruger Mini-14 Ranch Rifle, Mini-30	Matte	310-422	\$34.99
Savage-Anschutz 54, 64, 141, 141M, 153, 153S, Remington 541S, Winchester 310, 320, 9422, Most 22 Caliber Rifle with Dovetail Receivers	Matte	121-512	\$34.99
T/C Black Diamond	Matte	182-157	\$34.99
T/C Contender, Contender G2	Matte	749-748	\$34.99
T/C Encore, Omega (Pictured)	Matte	141-928	\$34.99
Winchester; Remington Pump and Auto Shotguns, Hopkins & Allen Muzzleloaders	Matte	697-794	\$34.99
Winchester Post-War Model 70, 670, 770, Browning A Bolt	Matte	176-796	\$34.99

### Williams WGRS Guide Receiver Sights and Front Sight Sets

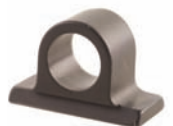
An economical set that includes the compact low profile Williams Guide Receiver Sight and the appropriate height front sight. The Guide Receiver Sight features simple, positive screw-lock windage and elevation adjustments. In most cases the sight utilizes the existing scope mounting screw holes or dovetail on top of the receiver for installation.



Description	Product #	Price
Optima and Optima Pro with Fire Sight	190-235	\$41.99
Marlin Lever Action with Fire Sight (Pictured)	945-296	\$41.99
Ruger 10/22 with Gold Bead	527-477	\$41.99
Ruger 10/22 with Fire Sight	846-604	\$41.99
Ruger 96/22, 96/22 Magnum with Fire Sight	415-283	\$41.99
Ruger Deerfield Carbine with Fire Sight	267-525	\$41.99

### Williams Guide Receiver Sight Ghost Ring Aperture

The highly accurate aluminum Ghost Ring Sight is perfect for quick target acquisition in a variety of lighting conditions. Aperture can be used with any WGRS receiver sight. Matte.



# 496-762	\$5.29
-----------	--------

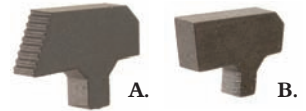
**Bo-Mar Dan Wesson Revolver Sights**



These steel sights install easily onto Dan Wesson revolvers using the factory holes, no gunsmithing required. Fully adjustable with a longer sight radius for increased accuracy. Front sights are .125" wide.

<b>Rear Sight.....</b>	<b>Finish ....</b>	<b>Product # ...</b>	<b>Price</b>
Target Blade.....	Blue .....	814-287 .....	\$68.99
<b>Front Sights.....</b>	<b>Finish ....</b>	<b>Product # ...</b>	<b>Price</b>
.500" Height.....	Blue .....	171-644 .....	\$17.99
.550" Height.....	Blue .....	449-951 .....	\$17.99

**Bo-Mar 1911 Front Sights**



Bo-Mar Front Sights feature solid steel construction and are .125" wide for fast target acquisition with a wide tennon stake-on design. Gunsmith fitting will be required.

<b>Fast Draw .....</b>	<b>Finish ....</b>	<b>Product # ...</b>	<b>Price</b>
.210" Height (A).....	Blue .....	427-687 .....	\$11.49
.230" Height.....	Blue .....	187-956 .....	\$11.49
.3125" Height.....	Blue .....	219-243 .....	\$11.49
<b>Undercut .....</b>	<b>Finish ....</b>	<b>Product # ...</b>	<b>Price</b>
.250" Height (B).....	Blue .....	262-076 .....	\$11.49
.280" Height.....	Blue .....	257-759 .....	\$11.29
.3125" Height.....	Blue .....	325-226 .....	\$11.49

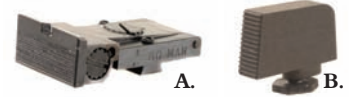
**Bo-Mar Ruger Mark 1, 2 Adjustable Sights**



For Ruger Mark 1 and 2 with 5-1/2" bull barrels. These sights offer an increased sight radius and full adjustability for both windage and elevation. Sturdy steel construction. Gunsmithing required.

<b>Description.....</b>	<b>Finish ....</b>	<b>Product # ...</b>	<b>Price</b>
Target Blade Rear Sight.....	Blue .....	993-766 .....	\$61.99
Undercut Front Sight.....	Blue .....	455-202 .....	\$11.49

**Bo-Mar Glock Sights**



Extended sight radius with windage and elevation adjustments make these steel sights perfect for target practice or competition. Rear sight uses the factory dovetail.

<b>Description.....</b>	<b>Finish ....</b>	<b>Product # ...</b>	<b>Price</b>
Adjustable Target Blade Rear Sight (A).....	Blue .....	179-489 .....	\$64.99
Aro-Tek Front Sight (B).....	Blue .....	714-644 .....	\$19.99

*275" Height*

**Bo-Mar Target Blade Rear Sights**



Steel sights are fully adjustable with a square target profile and a .008" sight notch. Installs on existing mounting holes, no gunsmithing required.

<b>Description.....</b>	<b>Finish ....</b>	<b>Product # ...</b>	<b>Price</b>
T/C Contender; G2 Contender.....	Blue .....	268-037 .....	\$71.99
Remington XP-100.....	Blue .....	262-402 .....	\$71.99

**Bo-Mar S&W 14, 19 Sight Ribs**



These steel Sight Ribs offer increased weight to reduce muzzle flip. The integral set of Bo-Mar Front and Rear target sights are perfect for competition. Requires drilling and tapping the frame and removal of original sights.

<b>Description.....</b>	<b>Finish .....</b>	<b>Weight.....</b>	<b>Product # ...</b>	<b>Price</b>
Combat Rib (Pictured).....	Blue .....	6-1/2 oz .....	395-983 .....	\$116.99
<i>For 6" Factory Barrel</i>				
West Coast Winged Rib.....	Blue .....	7-1/4 oz .....	914-699 .....	\$128.99
<i>For 6" Custom Bull Barrel</i>				
Winged Rib.....	Blue .....	7-1/4 oz .....	738-570 .....	\$128.99
<i>For 6" Factory Barrel</i>				

**Bo-Mar 1911 Adjustable Rear Sights**



Bo-Mar Rear Sights offer increased sight radius for improved accuracy. These steel sights feature either a square (Target) blade or a chamfered (Combat) blade. Gunsmith installation required.

<b>Combat Blade.....</b>	<b>Finish ....</b>	<b>Product # ...</b>	<b>Price</b>
BMCS Bo-Mar Cut (Pictured).....	Blue .....	921-525 .....	\$61.99
BMCS Bo-Mar Cut with Tritium Bar.....	Blue .....	640-677 .....	\$89.99
Kimber Factory Cut.....	Blue .....	413-258 .....	\$64.99
<i>For frames with Adjustable Sight cuts.</i>			
Para-Ordnance, Springfield Factory Cut.....	Blue .....	412-781 .....	\$64.99
<i>For frames with Adjustable Sight cuts.</i>			
<b>Target Blade.....</b>	<b>Finish ....</b>	<b>Product # ...</b>	<b>Price</b>
BMCS Bo-Mar Cut.....	Blue .....	299-526 .....	\$55.99
BMCS-2 Bo-Mar Cut.....	Blue .....	253-328 .....	\$64.99

**Bo-Mar S&W 41 Adjustable Target Rear Sight**



Rear sight features an adjustable target blade and solid steel construction. Requires gunsmith installation. Blue.

# 158-521.....	\$64.99
----------------	---------

**Champion 1911 Front Sights**



These steel front sights are EDM cut to exacting tolerances for a precise fit. Tritium models feature a night sight insert that glows pale green for low light use.

White Dot Model features a white polymer insert that protrudes slightly, offering fast target acquisition without collecting dirt or grime. The Serpent model features a bright red, fiber optic insert that provides excellent target acquisition during daylight hours. These sights fit Novak front dovetails, though in most cases some fitting will be required.

<b>Novak Cut.....</b>	<b>Height.....</b>	<b>Width.....</b>	<b>Finish.....</b>	<b>Product # ....</b>	<b>Price</b>
White Dot (Pictured).....	0.150".....	0.122".....	Blue.....	579-900 .....	\$22.99
White Dot.....	0.160".....	0.122".....	Blue.....	219-854 .....	\$22.99
White Dot.....	0.170".....	0.122".....	Blue.....	714-101 .....	\$22.99
White Dot.....	0.180".....	0.122".....	Blue.....	582-455 .....	\$22.99
White Dot.....	0.190".....	0.122".....	Blue.....	644-004 .....	\$22.99
White Dot.....	0.200".....	0.122".....	Blue.....	484-718 .....	\$22.99
Tritium.....	0.160".....	0.122".....	Blue.....	296-673 .....	\$44.99
Tritium.....	0.170".....	0.122".....	Blue.....	815-254 .....	\$44.99
Tritium.....	0.175".....	0.122".....	Blue.....	698-920 .....	\$44.99
Tritium.....	0.180".....	0.122".....	Blue.....	119-734 .....	\$44.99
Tritium.....	0.190".....	0.122".....	Blue.....	815-408 .....	\$44.99
Tritium.....	0.200".....	0.122".....	Blue.....	817-297 .....	\$44.99
Standard.....	0.150".....	0.122".....	Blue.....	815-090 .....	\$18.99
Standard.....	0.160".....	0.122".....	Blue.....	321-842 .....	\$18.99
Standard.....	0.170".....	0.122".....	Blue.....	125-342 .....	\$18.99
Standard.....	0.180".....	0.122".....	Blue.....	258-314 .....	\$18.99
Standard.....	0.190".....	0.122".....	Blue.....	952-635 .....	\$18.99
Standard.....	0.200".....	0.122".....	Blue.....	349-734 .....	\$18.99
Fiber Optic Serpent.....	0.160".....	0.118".....	Blue.....	652-983 .....	\$29.99
Fiber Optic Serpent.....	0.170".....	0.118".....	Blue.....	179-146 .....	\$29.99
Fiber Optic Serpent.....	0.180".....	0.118".....	Blue.....	445-460 .....	\$29.99
Fiber Optic Serpent.....	0.190".....	0.118".....	Blue.....	785-192 .....	\$29.99
Fiber Optic Serpent.....	0.200".....	0.118".....	Blue.....	323-313 .....	\$29.99
Sight Blank.....	0.300".....	0.125".....	Blue.....	173-347 .....	\$22.99

*For custom gunsmithing applications.*

**See page 672 for Glock Factory Sights.**



**Want to learn more about guns?**

Check out MidwayUSA's GunTec Dictionary on MidwayUSA.com.

[www.midwayusa.com/guntecdictionary](http://www.midwayusa.com/guntecdictionary)



**Champion Rear Sights**

Champion Gun Sights are used as original equipment for many of today's top manufacturers. Made of chrome moly steel, these sights are EDM cut for tight tolerances and then heat-treated for durability. Defensive models feature a low profile angled design and a Novak dovetail. Target and Combat Carry models are higher profile with a Bo-Mar dovetail. Drop-in fit.

1911 Bo-Mar Cut	Finish	Product #	Price
Adjustable Classic Target (A)	Blue	341-420	\$59.99
Adjustable Combat Carry (B)	Blue	286-237	\$59.99
Adjustable Tactical Competition (C)	Blue	656-429	\$62.99
Adjustable Tritium	Blue	161-723	\$99.99
1911 Colt Gold Cup	Finish	Product #	Price
Adjustable Standard Rear	Blue	840-433	\$49.99
1911 Novak Cut	Finish	Product #	Price
Adjustable Standard Defensive	Blue	185-714	\$59.99
Adjustable Tritium Defensive	Blue	228-658	\$89.99
<i>Adjustable for Elevation only.</i>			
Standard Defensive	Blue	154-626	\$29.99
Tritium Defensive	Blue	747-975	\$62.99
White Dot Defensive (D)	Blue	745-485	\$29.99
1911 Springfield Trophy Match	Finish	Product #	Price
Adjustable Combat Carry	Blue	710-885	\$62.99
Glock 17, 22, 24, 34, 35	Finish	Product #	Price
Adjustable Target	Blue	750-466	\$62.99



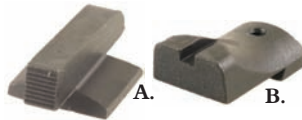
**Chip McCormick 1911 Low Mount Rear Sight**



This fixed rear sight is a two-piece unit that uses the standard .290" x 60 degree dovetail in the slide while the sight mounts over the top of the dovetail. Fits any 1911 slide with standard military dovetail cut. If your dovetail measures 60 to 65 degrees with a .330" width at the base of the dovetail, this sight will fit. Drop-in with no gunsmithing required. Matte.

# 107-131 .....\$40.49

**Chip McCormick 1911 Sights**



All edges are rounded and blended for carry comfort and to eliminate snagging when drawing or clearing jams. Sight fits Chip McCormick Easy-Fit slides and will require machining for use on other models. Front sight has a Novak style dovetail, and rear sight has a Bo-Mar style dovetail.

Description	Finish	Product #	Price
Front Sight (A)	Black	637-546	\$23.49
.125" Width, .150" Height			
Rear Sight (B)	Black	462-651	\$23.49



**Cylinder & Slide 1911 Dovetail Front Sights**



Replacement sights for the 1911 feature a Novak-style dovetail and may require fitting to your slide.

Height	Width	Finish	Product #	Price
0.375"	0.110"	Blue	666-867	\$16.49
0.375"	0.125"	Blue	685-085	\$16.49
0.410"	0.125"	Blue	845-719	\$19.99

**Cylinder & Slide S&W K, L, N-Frame Extreme Duty Fixed Sight Sets**



The Extreme Duty Fixed Sight will convert a K, L, or N-Frame S&W with adjustable sights to a fixed sight tactical revolver. Gunsmith installation required.

Description	Finish	Product #	Price
2 Dot Blade Set (Pictured)	Blue	592-106	\$90.99
Black Blade Set	Blue	242-221	\$81.99



**Ed Brown 1911 Front Sights**



A complete line of standard front sights for standard 1911 type guns as well as newer Colt handguns with the wide tenon width. Machined from heat-treated steel. Requires fitting by qualified gunsmith.

Cross Sight	Height	Width	Finish	Product #	Price
Novak Dovetail	0.200"	0.125"	Matte	476-040	\$19.49
Modified Ramp	Height	Width	Finish	Product #	Price
Narrow Tenon Stake-On	0.200"	0.125"	Matte	916-502	\$11.79
Narrow Tenon with White Dot Stake-On	0.200"	0.125"	Matte	977-240	\$13.79
Wide Tenon Stake-On	0.200"	0.125"	Matte	422-432	\$11.79
Wide Tenon with White Dot Stake-On	0.200"	0.125"	Matte	721-267	\$13.79
Post	Height	Width	Finish	Product #	Price
Narrow Tenon Stake-On	0.200"	0.125"	Matte	292-716	\$11.79
Narrow Tenon with White Dot Stake-On	0.200"	0.125"	Matte	467-755	\$13.79
Wide Tenon Stake-On	0.200"	0.125"	Matte	445-269	\$11.79
Wide Tenon with White Dot Stake-On (Pictured)	0.200"	0.125"	Matte	325-657	\$13.79
Tritium Dot	Height	Width	Finish	Product #	Price
Novak Dovetail	0.180"	0.125"	Matte	678-455	\$59.99

**Heinie Traditional Handgun Sight Sets**

Large, flat, serrated rear sight blade enhances sight acquisition. Machining of slide required. Steel construction.



Sight Set	Finish	Product #	Price
1911 with Heinie Cuts	Blue	596-880	\$50.99
Browning Hi-Power	Blue	521-047	\$50.99
Glock (Pictured)	Blue	766-171	\$48.99
Rear Sight	Finish	Product #	Price
1911 with Heinie Cuts	Blue	307-182	\$35.99
Browning Hi-Power	Blue	247-212	\$35.99

**Heinie SlantPro Handgun Sight Sets**



The face of the SlantPro rear sight is serrated and slanted forward slightly to eliminate glare and give better sight picture definition. The contoured shape makes the sight more snag resistant, an excellent concealed carry feature. Steel construction. Gunsmith installation required.

Sight Set	Finish	Product #	Price
1911 with Heinie Cuts	Blue	326-734	\$52.99
1911 with Kimber Cuts	Blue	575-670	\$52.99
Browning Hi-Power	Blue	272-590	\$52.99
All Glock Models (Except 36)	Blue	515-933	\$49.99
Glock 36	Blue	800-240	\$49.99
Sig Sauer P220, P229 (Pictured)	Blue	582-236	\$49.99
Sig Sauer P225, P226, P228, P239	Blue	285-825	\$49.99
Rear Sight (Only)	Finish	Product #	Price
All Glock Models	Blue	211-653	\$35.99

**Heinie Straight 8 Night Sight Sets**

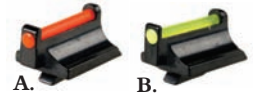
Straight 8 Night Sights consist of a tritium dot on the front sight and a slightly smaller tritium dot on the rear sight which glow in the dark. When aligning this sight picture, put one dot on top of the other dot making an elongated figure 8. The Traditional has a vertical rear sight, and the SlantPro is slanted forward for an improved sight picture. Both are serrated to eliminate glare and feature a contoured shape which makes them snag resistant for concealed carry. Gunsmith installation required.



SlantPro.....	Finish.....	Product #.....	Price
1911 with Heinie Cuts (Pictured).....	Blue.....	805-202.....	\$121.99
1911 with Kimber Cuts.....	Blue.....	723-009.....	\$121.99
Browning Hi-Power.....	Blue.....	637-719.....	\$121.99
All Glock Models (Except 36).....	Blue.....	709-794.....	\$102.99
Glock 36.....	Blue.....	144-140.....	\$102.99
Sig Sauer P220, P229.....	Blue.....	689-979.....	\$102.99
Sig Sauer P225, P226, P228, P239.....	Blue.....	285-778.....	\$102.99
Traditional.....	Finish.....	Product #.....	Price
1911 with Heinie Cuts.....	Blue.....	559-061.....	\$121.99
Browning Hi-Power.....	Blue.....	571-918.....	\$121.99



**Marble's Ruger Fiber Optic Front Sights**



These fiber optic front sights replace the standard factory sights for the Ruger Super Redhawk and Redhawk revolvers. They are machined to match the special hook dovetail for these guns. They give you the high visibility and precision of a fiber optic sight with the strength of solid steel construction. Drop in fit.

Description.....	Color..	Height..	Product #..	Price
Super Redhawk 44 Remington Magnum (A).....	Orange.....	0.332".....	318-076.....	\$18.49
Super Redhawk 44 Remington Magnum (B).....	Green.....	0.332".....	320-817.....	\$18.49
Super Redhawk 454 Casull.....	Orange.....	0.310".....	329-691.....	\$18.49
Super Redhawk 454 Casull.....	Green.....	0.310".....	329-877.....	\$18.49
Redhawk 44 Remington Magnum, Super Redhawk 480 Ruger.....	Orange.....	0.390".....	331-961.....	\$18.49
Redhawk 44 Remington Magnum, Super Redhawk 480 Ruger.....	Green.....	0.390".....	334-505.....	\$18.49

**MEPROLIGHT® Meprolight Tru-Dot Tritium Sight Sets**

Meprolight Tru-Dot sights feature a front dot that is slightly brighter than the rear sight to help the shooter focus on the target. Light tubes are sealed with a patented bonding process that makes them impervious to solvents and oils and the sight bodies are constructed of steel. Tru-Dot sights have a 12-year illumination warranty. Revolver front sights may require gunsmithing.



1911.....	Color.....	Finish.....	Product #.....	Price
Adjustable Sight Set (Stake-On Wide Tenon Front, Colt Rear).....	Green Front/Green Rear.....	Matte.....	158-325.....	\$159.99
Sight Set (Stake-On Wide Tenon Front, Colt Rear Cut).....	Green Front/Green Rear.....	Matte.....	404-120.....	\$99.99
Adjustable Sight Set.....	Green Front/Green Rear.....	Matte.....	133-732.....	\$129.99
1911 (Kimber Custom, Compact) ..	Color.....	Finish.....	Product #.....	Price
Sight Set.....	Green Front/Green Rear.....	Matte.....	879-586.....	\$79.99
1911 (Kimber Front and Rear Cuts).....	Color.....	Finish.....	Product #.....	Price
Slant Night Sight Set.....	Green Front/Green Rear.....	Blue.....	881-808.....	\$104.99
Beretta 92F.....	Color.....	Finish.....	Product #.....	Price
Sight Set.....	Green Front/Green Rear.....	Matte.....	282-656.....	\$79.99
Beretta 92 Elite, Brigadier.....	Color.....	Finish.....	Product #.....	Price
Sight Set.....	Green Front/Green Rear.....	Matte.....	174-883.....	\$79.99
Browning Hi-Power Mark 3.....	Color.....	Finish.....	Product #.....	Price
Sight Set.....	Green Front/Green Rear.....	Matte.....	615-152.....	\$99.99
Adjustable Sight Set.....	Green Front/Green Rear.....	Matte.....	541-521.....	\$114.99
Glock 17, 19, 22, 23, 24, 35.....	Color.....	Finish.....	Product #.....	Price
Sight Set.....	Green Front/Green Rear.....	Matte.....	346-525.....	\$69.99
Sight Set.....	Green Front/Orange Rear.....	Matte.....	487-203.....	\$69.99
Sight Set.....	Green Front/Yellow Rear.....	Matte.....	872-680.....	\$69.99
Glock 20, 21, 29, 30, 36.....	Color.....	Finish.....	Product #.....	Price
Sight Set.....	Green Front/Green Rear.....	Matte.....	744-932.....	\$69.99
Sight Set.....	Green Front/Orange Rear.....	Matte.....	812-840.....	\$69.99
Sight Set.....	Green Front/Yellow Rear.....	Matte.....	294-791.....	\$69.99
Glock 26, 27.....	Color.....	Finish.....	Product #.....	Price
Sight Set.....	Green Front/Green Rear.....	Matte.....	349-523.....	\$69.99
Sight Set.....	Green Front/Orange Rear.....	Matte.....	189-674.....	\$69.99
Sight Set.....	Green Front/Yellow Rear.....	Matte.....	312-156.....	\$69.99
HK P2000 Compact, Sub-Compact.....	Color.....	Finish.....	Product #.....	Price
Sight Set.....	Green Front/Green Rear.....	Matte.....	476-345.....	\$79.99
HK P7M8.....	Color.....	Finish.....	Product #.....	Price
Sight Set.....	Green Front/Green Rear.....	Matte.....	118-962.....	\$79.99
HK USP Full Size.....	Color.....	Finish.....	Product #.....	Price
Sight Set.....	Green Front/Green Rear.....	Matte.....	356-636.....	\$79.99
Sight Set.....	Green Front/Orange Rear.....	Matte.....	991-548.....	\$79.99
Sight Set.....	Green Front/Yellow Rear.....	Matte.....	417-626.....	\$79.99
HK USP Full Size, Tactical.....	Color.....	Finish.....	Product #.....	Price
Adjustable Sight Set.....	Green Front/Green Rear.....	Matte.....	539-234.....	\$129.99
HK USP Compact.....	Color.....	Finish.....	Product #.....	Price
Sight Set.....	Green Front/Green Rear.....	Matte.....	374-912.....	\$79.99
Sight Set.....	Green Front/Orange Rear.....	Matte.....	573-093.....	\$79.99
Sight Set.....	Green Front/Yellow Rear.....	Matte.....	968-077.....	\$79.99
Ruger GP-100, Super Redhawk.....	Color.....	Finish.....	Product #.....	Price
Adjustable Sight Set.....	Green Front/Green Rear.....	Matte.....	739-724.....	\$109.99
Ruger P89.....	Color.....	Finish.....	Product #.....	Price
Sight Set.....	Green Front/Green Rear.....	Matte.....	115-995.....	\$79.99



**JP Enterprises Double Ring Sight Sets**

Set includes tubular front sight and ghost ring rear sight to create a system that gives you a perfect blend of speed and accuracy. The blaze orange fluorescent coating on the front ring makes it virtually impossible to lose. Sight System is perfect for short to medium range targets and ship with a bottle of fluorescent Sightcoat. Fitting may be required on some models.

Description.....	Height ..	Finish ..	Product # ..	Price
1911 Standard Rear Dovetail, JP Dovetail Front Sight .200" High.....	0.200".....	Matte.....	416-549.....	\$85.99
Bo-Mar BMCS Rear Cut, JP Dovetail Front.....	0.200".....	Matte.....	173-412.....	\$114.99
Browning Hi-Power Drop-In Rear, JP Dovetail Front Sight .200" High.....	0.200".....	Matte.....	366-232.....	\$85.99
Colt Gold Cup with Elliason Rear Adaptor, JP Dovetail Front Sight .225" High.....	0.200".....	Matte.....	398-032.....	\$75.99
Kimber with Adjustable Rear, JP Dovetail Front.....	0.200".....	Matte.....	965-435.....	\$114.99
LPA Rear Sight Cut, JP Front.....	0.200".....	Matte.....	126-062.....	\$114.99
Glock.....	0.200".....	Matte.....	292-746.....	\$85.99



**Kimber 1911 Sight Sets**



These high quality steel sights and sight sets feature Kimber style dovetails. Sights will require gunsmith fitting.

Adjustable Sight Sets.....	Finish.....	Product #.....	Price
Plain (Pictured).....	Blue.....	395-596.....	\$78.99
White Dot.....	Blue.....	398-181.....	\$98.99
Fixed Sight Sets.....	Finish.....	Product #.....	Price
White Dot.....	Blue.....	424-495.....	\$48.99
Individual Sights.....	Finish.....	Product #.....	Price
Plain Front Sight.....	Blue.....	343-947.....	\$13.99
.180" Height .112" Width White Dot Front Sight.....	Blue.....	917-815.....	\$22.99
.150" Height .112" Width White Dot Front Sight.....	Blue.....	766-560.....	\$23.99
.180" Height .112" Width White Dot Rear Sight.....	Blue.....	588-995.....	\$33.99

• Don't Forget these Customer Favorites •



**MidwayUSA Cotton Caps**



Low Profile

# 652-754 \$4.99

For more MidwayUSA Merchandise, see page 836.

**Meprolight Tru-Dot Tritium Sight Sets (continued)**

<b>Ruger P90, P91, P93, P95</b> .....Color.....Finish.....Product #.....Price	Sight Set.....Green Front/Green Rear.....Matte.....365-430.....\$79.99
<b>Ruger P94, P97</b> .....Color.....Finish.....Product #.....Price	Sight Set.....Green Front/Green Rear.....Matte.....398-733.....\$79.99
<b>Ruger SP101</b> .....Color.....Finish.....Product #.....Price	Front Sight.....Green.....Matte.....112-094.....\$39.99
<b>S&amp;W J-Frame (1-7/8" Barrel)</b> .....Color.....Finish.....Product #.....Price	Front Sight.....Green.....Matte.....224-681.....\$39.99
<b>S&amp;W K, L, N-Frame with Pinned Front Sight</b> .....Color.....Finish.....Product #.....Price	Adjustable Sight Set.....Green Front/Green Rear.....Matte.....687-532.....\$79.99
<b>S&amp;W K, L, N-Frame with Red Insert Front Sight</b> .....Color.....Finish.....Product #.....Price	Adjustable Sight Set.....Green Front/Green Rear.....Matte.....489-909.....\$79.99
<b>Sig Sauer P220, P225, P226, P228</b> .....Color.....Finish.....Product #.....Price	Adjustable Sight Set.....Green Front/Green Rear.....Matte.....194-528.....\$129.99
	Sight Set.....Green Front/Green Rear.....Matte.....709-744.....\$79.99
	Sight Set.....Green Front/Orange Rear.....Matte.....783-622.....\$79.99
	Sight Set.....Green Front/Yellow Rear.....Matte.....853-090.....\$79.99
<b>Sig Sauer P229</b> .....Color.....Finish.....Product #.....Price	Sight Set.....Green Front/Green Rear.....Matte.....527-050.....\$79.99
	Sight Set.....Green Front/Orange Rear.....Matte.....421-908.....\$79.99
	Sight Set.....Green Front/Yellow Rear.....Matte.....550-250.....\$79.99
<b>Springfield Armory XD (Service, Tactical)</b> .....Color.....Finish.....Product #.....Price	Sight Set.....Green Front/Green Rear.....Matte.....889-449.....\$79.99
	Sight Set.....Green Front/Orange Rear.....Matte.....288-092.....\$79.99
	Sight Set.....Green Front/Yellow Rear.....Matte.....353-594.....\$79.99

**Millett Millett Stake-On Front Sights**



Millett Stake-On Front Sights offer easy installation. These models have a single tenon that accommodates the single hole in the slide. The Dual-Crimp/Stake-On combination tool is required for installation (Product # 269-426).

<b>Description</b> ..... <b>Product #</b> ..... <b>Price</b>
Glock 17L & 24 .340 Orange Bar.....169-419.....\$12.99
Glock 17L & 24 .340 White Dot.....235-253.....\$12.99
Glock 17L & 24 .340 Serrated Ramp.....486-722.....\$12.99
Serrated Ramp .225".....153-576.....\$12.99

**Millett Series 100 Adjustable Rear Sights**



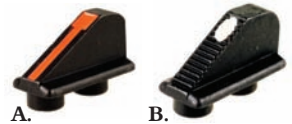
These steel sights feature a positive light-deflection serration and slant to eliminate glare and a knife-edge rear sight notch for extra-crisp target definition. The precision windage and elevation adjustments have a positive, audible click that tells you the hardened screws and detents are locked into their settings.

<b>1911 Government</b> ..... <b>Finish</b> ..... <b>Product #</b> ..... <b>Price</b>
3-Dot.....Matte.....727-908.....\$39.99
Target.....Matte.....306-664.....\$40.99
White Outline.....Matte.....652-500.....\$39.99
<b>AMT Hardballer</b> ..... <b>Finish</b> ..... <b>Product #</b> ..... <b>Price</b>
Target.....Matte.....497-973.....\$35.99
White Outline.....Matte.....273-489.....\$35.99
<b>Beretta Accurizer 84, 85, 92S, 92SB</b> ..... <b>Finish</b> ..... <b>Product #</b> ..... <b>Price</b>
3-Dot.....Matte.....567-318.....\$40.99
Target.....Matte.....168-161.....\$40.99
White Outline.....Matte.....451-183.....\$40.99
<b>Brno CZ-75, TZ-75, TA-90 Older Model Without Pin On Front</b> ..... <b>Finish</b> ..... <b>Product #</b> ..... <b>Price</b>
White Outline.....Matte.....483-547.....\$39.99
<b>Browning Hi-Power Adjustable Old Small Dovetail Fixed Sight Slide</b> ..... <b>Finish</b> ..... <b>Product #</b> ..... <b>Price</b>
White Outline.....Matte.....246-310.....\$39.99
<b>Browning Hi-Power Factory Adjustable Sight Slide, Taurus PT92</b> ..... <b>Finish</b> ..... <b>Product #</b> ..... <b>Price</b>
3-Dot.....Matte.....132-622.....\$39.99
Target.....Matte.....247-955.....\$39.99
White Outline.....Matte.....653-614.....\$39.99
<b>Colt Custom Combat Lo-Profile</b> ..... <b>Finish</b> ..... <b>Product #</b> ..... <b>Price</b>
3-Dot.....Matte.....112-834.....\$39.99
Target.....Matte.....620-310.....\$39.99
White Outline.....Matte.....202-201.....\$39.99

**Millett Series 100 Adjustable Rear Sights (continued)**

<b>Colt 1911 Gold Cup</b> ..... <b>Finish</b> ..... <b>Product #</b> ..... <b>Price</b>
Target.....Matte.....581-596.....\$35.99
White Outline.....Matte.....356-185.....\$35.99
<b>Colt Revolver All Models</b> ..... <b>Finish</b> ..... <b>Product #</b> ..... <b>Price</b>
Target.....Matte.....324-937.....\$35.99
White Outline.....Matte.....759-206.....\$35.99
<b>Dan Wesson 15 in 41, 44 Calibers</b> ..... <b>Finish</b> ..... <b>Product #</b> ..... <b>Price</b>
Target.....Matte.....144-119.....\$35.99
White Outline.....Matte.....173-830.....\$35.99
<b>Glock 17, 17L, 19, 20, 21, 22, 23</b> ..... <b>Finish</b> ..... <b>Product #</b> ..... <b>Price</b>
Target.....Matte.....884-430.....\$39.99
White Outline.....Matte.....251-769.....\$39.99
<b>Ruger P85</b> ..... <b>Finish</b> ..... <b>Product #</b> ..... <b>Price</b>
3-Dot.....Matte.....263-652.....\$39.99
White Outline.....Matte.....427-903.....\$39.99
<b>Ruger Revolver All Models</b> ..... <b>Finish</b> ..... <b>Product #</b> ..... <b>Price</b>
Target.....Matte.....220-207.....\$35.99
White Outline.....Matte.....799-609.....\$35.99
<b>S&amp;W K, L, N-Frame (Post-94) Round Tang .360</b> ..... <b>Finish</b> ..... <b>Product #</b> ..... <b>Price</b>
Target.....Matte.....345-563.....\$39.99
White Outline.....Matte.....851-674.....\$39.99
<b>S&amp;W K, L, N-Frame (Pre-74) Flat Tang .360</b> ..... <b>Finish</b> ..... <b>Product #</b> ..... <b>Price</b>
Target.....Matte.....157-483.....\$39.99
<b>S&amp;W K, L, N-Frame Round Tang .312</b> ..... <b>Finish</b> ..... <b>Product #</b> ..... <b>Price</b>
Target.....Matte.....347-610.....\$39.99
White Outline.....Matte.....286-154.....\$39.99
<b>S&amp;W K, L, N-Frame Round Tang .410</b> ..... <b>Finish</b> ..... <b>Product #</b> ..... <b>Price</b>
Target.....Matte.....584-460.....\$39.99
White Outline.....Matte.....245-413.....\$39.99
<b>S&amp;W K, L-Frame Square Tang .312</b> ..... <b>Finish</b> ..... <b>Product #</b> ..... <b>Price</b>
Target.....Matte.....710-942.....\$39.99
White Outline.....Matte.....274-992.....\$39.99
<b>S&amp;W K, L-Frame Square Tang .360</b> ..... <b>Finish</b> ..... <b>Product #</b> ..... <b>Price</b>
White Outline.....Matte.....219-755.....\$39.99
<b>S&amp;W K, L-Frame Square Tang .410</b> ..... <b>Finish</b> ..... <b>Product #</b> ..... <b>Price</b>
Target.....Matte.....949-783.....\$39.99
White Outline.....Matte.....412-206.....\$39.99
<b>S&amp;W K, N-Frame (Pre-74) Tang .312</b> ..... <b>Finish</b> ..... <b>Product #</b> ..... <b>Price</b>
Target.....Matte.....161-394.....\$39.99
White Outline.....Matte.....734-173.....\$39.99
<b>S&amp;W K, N-Frame (Pre-74) Tang .360</b> ..... <b>Finish</b> ..... <b>Product #</b> ..... <b>Price</b>
Target.....Matte.....194-578.....\$39.99
White Outline.....Matte.....986-536.....\$39.99
<b>S&amp;W K, N-Frame (Pre-74) Tang .410</b> ..... <b>Finish</b> ..... <b>Product #</b> ..... <b>Price</b>
Target.....Matte.....165-279.....\$39.99
White Outline.....Matte.....155-457.....\$39.99
<b>S&amp;W N-Frame Square Tang .312</b> ..... <b>Finish</b> ..... <b>Product #</b> ..... <b>Price</b>
Target.....Matte.....678-406.....\$39.99
White Outline.....Matte.....512-739.....\$39.99
<b>S&amp;W N-Frame Square Tang .360</b> ..... <b>Finish</b> ..... <b>Product #</b> ..... <b>Price</b>
Target.....Matte.....711-386.....\$39.99
White Outline.....Matte.....473-828.....\$39.99
<b>S&amp;W N-Frame Square Tang .410</b> ..... <b>Finish</b> ..... <b>Product #</b> ..... <b>Price</b>
Target.....Matte.....881-386.....\$39.99
White Outline.....Matte.....279-495.....\$39.99

**Millett Dual-Crimp Front Sights**



Dual-Crimp steel front sights are easy to install with Millett Dual-Crimp Stake-On combination tool system (#269-426, sold separately). Dimension listed is the height. Gunsmith installation required.

<b>Orange Bar</b> ..... <b>Finish</b> ..... <b>Product #</b> ..... <b>Price</b>
.185".....Matte.....406-438.....\$12.99
.200".....Matte.....799-367.....\$12.99
.225".....Matte.....716-971.....\$12.99
.275".....Matte.....414-489.....\$12.99
.312" (A).....Matte.....632-749.....\$12.99
.340".....Matte.....316-840.....\$12.99
.410".....Matte.....721-775.....\$12.99
<b>Plain Post</b> ..... <b>Finish</b> ..... <b>Product #</b> ..... <b>Price</b>
.312".....Matte.....525-273.....\$12.99
<b>White Dot</b> ..... <b>Finish</b> ..... <b>Product #</b> ..... <b>Price</b>
.185".....Matte.....344-067.....\$12.99
.200".....Matte.....160-352.....\$12.99
.225".....Matte.....789-160.....\$12.99
.312" (B).....Matte.....861-662.....\$12.99

# Millett

## Millett Series 100 Front Sights



Sights are designed to install in the same way as the factory original. Pin-on type sights will require locating and drilling the hole for the cross pin. Beretta sights fit over the original front sight and require drilling for cross pin.

Model	Finish	Product #	Price
<b>Beretta 84, 85, 92S, 92SB</b>			
Orange Bar	Matte	725-467	\$19.99
Plain Serrated	Matte	219-286	\$19.99
<b>Browning Hi-Power 0.340" Dovetail Front</b>			
Orange Bar	Matte	175-067	\$12.99
White Dot	Matte	396-553	\$12.99
<b>Colt Python</b>			
Orange Bar	Matte	499-478	\$11.99
<b>Colt Trooper</b>			
Orange Bar	Matte	485-713	\$11.99
<b>Dan Wesson</b>			
Orange Bar	Matte	405-627	\$12.99
<b>Ruger GP 100, Super Redhawk</b>			
Orange Bar	Matte	543-904	\$12.99
White Bar	Matte	688-079	\$12.99
<b>Ruger P85</b>			
Orange Bar (A)	Matte	774-533	\$12.99
White Bar (B)	Matte	750-196	\$12.99
White Dot (C)	Matte	421-847	\$12.99
<b>Ruger Redhawk</b>			
Orange Bar	Matte	889-824	\$12.99
White Bar	Matte	700-707	\$12.99
<b>Ruger Security 6 New Style</b>			
Orange Bar	Matte	408-221	\$12.99

## Novak 1911 Front Sights

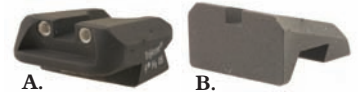


Sturdy steel front sights for the 1911. For standard 1911 dovetails. Fitting will be required, gunsmith installation is recommended. For the Government model unless noted.

Model	Height	Width	Finish	Product #	Price
<b>Kimber Cut</b>					
Plain (A)	0.180"	0.125"	Black	713-856	\$23.99
Tritium Dot (B)	0.150"	0.125"	Black	314-040	\$58.99
Tritium Dot Serrated (C)	0.175"	0.125"	Black	831-170	\$53.99
White Dot (D)	0.180"	0.125"	Black	978-291	\$28.99
<b>Novak Cut</b>					
Gold Bead	0.160"	0.125"	Black	618-457	\$88.99
Plain	0.160"	0.125"	Black	918-993	\$23.99
Plain	0.225"	0.125"	Black	355-984	\$23.99
Sight Blank (E)	0.295"	0.125"	Black	257-239	\$16.99
Tritium Dot	0.160"	0.125"	Black	612-211	\$53.99
Tritium Dot	0.175"	0.125"	Black	341-369	\$58.99
Tritium Dot	0.180"	0.125"	Black	331-938	\$58.99
Tritium Dot	0.190"	0.125"	Black	119-107	\$58.99
Tritium Dot	0.215"	0.125"	Black	254-169	\$53.99
Tritium Dot Serrated	0.175"	0.125"	Black	737-414	\$58.99
Tritium Dot Serrated	0.180"	0.125"	Black	536-255	\$58.99
Tritium Dot Serrated	0.190"	0.125"	Black	766-953	\$58.99
Tritium Dot Serrated	0.225"	0.125"	Black	876-713	\$53.99
White Dot	0.160"	0.125"	Black	394-042	\$28.99
White Dot	0.215"	0.125"	Black	393-294	\$28.99
White Dot	0.225"	0.125"	Black	222-017	\$28.99
<b>Officer Models</b>					
<b>Novak Cut</b>					
Gold Bead	0.165"	0.125"	Black	211-483	\$88.99
Plain	0.165"	0.125"	Black	221-504	\$23.99
Sight Blank	0.295"	0.125"	Black	450-567	\$16.99
Tritium Dot	0.160"	0.125"	Black	143-705	\$58.99
Tritium Dot	0.165"	0.125"	Black	515-718	\$58.99
Tritium Dot Serrated	0.165"	0.125"	Black	343-603	\$58.99

## Novak 1911 Rear Sights

Snag-proof Novak-style sights that fit standard 1911 rear sight dovetails. Sturdy steel construction. Fitting may be required, gunsmith installation is recommended.



Model	Finish	Product #	Price
<b>Carry</b>			
Plain	Black	892-720	\$28.99
Tritium Bar	Black	845-197	\$88.99
Tritium Dot (A)	Black	327-273	\$88.99
White Dot	Black	828-367	\$33.99
<b>Competition</b>			
Plain (B)	Black	230-741	\$28.99
Tritium Bar	Black	785-937	\$88.99
Tritium Dot	Black	337-244	\$88.99
White Dot	Black	985-210	\$33.99

## Novak 1911 LoMount Carry Rear Sights

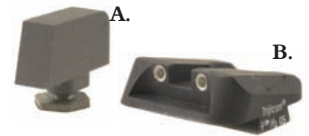
Sights offer low, snag-proof profiles and sturdy steel construction. Guns without Novak or Kimber Cuts will require machining for fit. Guns with Novak or Kimber Cuts will require only minor fitting. Extreme Duty Adjustable Sights will require a small amount of machining to fit for all guns except those with Kimber cuts. Gunsmith installation is recommended.



Model	Finish	Product #	Price
<b>Kimber Cut</b>			
Extreme Duty Adjustable	Black	150-381	\$68.99
Extreme Duty Tritium Dot Adjustable	Black	717-422	\$98.99
Extreme Duty White Dot Adjustable (Pictured)	Black	374-089	\$68.99
Ghost Tritium	Black	198-098	\$88.99
Plain	Black	194-767	\$31.99
Tritium Bar	Black	158-184	\$88.99
Tritium Dot	Black	165-175	\$88.99
White Dot	Black	974-861	\$36.99
<b>Novak Cut</b>			
Extreme Duty Adjustable	Black	450-080	\$68.99
Extreme Duty Tritium Dot Adjustable	Black	469-740	\$98.99
Extreme Duty White Dot Adjustable	Black	589-910	\$68.99
Ghost Tritium	Black	892-992	\$88.99
Plain	Black	181-994	\$31.99
Tritium Bar	Black	160-802	\$88.99
Tritium Dot	Black	179-335	\$88.99
White Dot	Black	536-413	\$36.99

## Novak Glock Sights

These sturdy steel sights fit factory Glock slides with no machining required. Gunsmith installation is recommended.



Model	Height	Width	Finish	Product #	Price
<b>Front</b>					
Sight Blank (A)	0.220"	0.134"	Black	363-466	\$19.99
White Dot	0.158"	0.134"	Black	728-898	\$28.99
Tritium Dot	0.158"	0.134"	Black	132-882	\$58.99
<b>Rear</b>					
Plain			Black	168-383	\$31.99
Tritium Bar			Black	299-989	\$88.99
Tritium Dot (B)			Black	873-596	\$88.99
White Dot			Black	827-488	\$33.99

• Don't Forget these Customer Favorites •



## Starline 45 Colt (Long Colt) Brass

Box of 100

# 195-841 \$12.99

For our complete line of Reloading Components, see pages 98-142.







**Pachmayr Accu-Set Rear Sights**



Sights are fully adjustable and designed to work with factory front sights. Constructed of hardened steel, these sights are designed to fit the factory dovetail groove. May require minor fitting.

<b>1911 Government</b> .....	<b>Finish..Product #..Price</b>
3 Dot Rear use with 0.115" Width Front Sight (Pictured).....	Blue.....317-341...\$49.99
3 Dot Rear use with 0.115" Width Front Sight.....	Blue.....333-586...\$49.99
Target Sight for use with 0.115" Width Front Sight.....	Blue.....210-173...\$49.99
<b>Browning Hi-Power</b> .....	<b>Finish..Product #..Price</b>
3 Dot Sight for use with 0.08" Width Front Sight.....	Blue.....412-913...\$49.99
Target Sight for use with 0.08" Width Front Sight.....	Blue.....751-431...\$49.99
White Outline Sight for use with 0.08" Width Front Sight.....	Blue.....816-329...\$49.99
<b>Browning Mark 3</b> .....	<b>Finish..Product #..Price</b>
3 Dot Sight for use with 0.115" Width Front Sight.....	Blue.....385-859...\$49.99
Target Sight for use with 0.115" Width Front Sight.....	Blue.....343-011...\$49.99
White Outline Sight for use with 0.115" Width Front Sight.....	Blue.....452-250...\$49.99
<b>Para Ordnance P12, P13, P14</b> .....	<b>Finish..Product #..Price</b>
3 Dot Sight.....	Blue.....953-394...\$49.99
Target Sight.....	Blue.....734-221...\$49.99
White Outline Sight.....	Blue.....450-117...\$49.99
<b>Ruger P89</b> .....	<b>Finish..Product #..Price</b>
3 Dot Sight with Front Sight.....	Blue.....266-638...\$49.99
Target Sight with Front Sight.....	Blue.....663-374...\$49.99
White Outline Sight with Front Sight.....	Blue.....155-242...\$49.99
<b>Sig Sauer P220, P225, P226, P228, P229</b> .....	<b>Finish..Product #..Price</b>
Target Sight.....	Blue.....480-939...\$49.99
White Outline Sight.....	Blue.....810-710...\$49.99

**SDM Gold Bead Front Sights**



Sights add a custom look to your handgun and feature a 14 carat gold bead. Sights require fitting and installation by a qualified gunsmith. Steel in the white requires finishing.

<b>1911</b> .....	<b>Finish.....Width...Height...Product #...Price</b>
Blank Novak Cut.....	Steel in the White.....0.125".....0.245".....932-549...\$31.99
Novak Cut (Pictured).....	Steel in the White.....0.125".....0.175".....850-538...\$48.99
Novak Cut.....	Steel in the White.....0.125".....0.185".....152-340...\$48.99
Novak Cut.....	Steel in the White.....0.125".....0.200".....394-827...\$48.99
<b>S&amp;W Revolvers</b> .....	<b>Finish.....Width...Height...Product #...Price</b>
Classic, DX.....	Blue.....0.125".....0.250".....886-757...\$46.99
Classic, DX.....	Blue.....0.125".....0.300".....745-734...\$46.99
Pinned Front Sight.....	Blue.....0.125".....0.250".....540-350...\$46.99
Pinned Front Sight.....	Blue.....0.125".....0.300".....280-565...\$46.99

**SDM S&W Revolver Super Sight Fiber Optic Front Sights**



These Fiber Optic Sights use ambient light to glow bright for quick target acquisition even in low light situations. They feature 50 lpi serrations to reduce glare. Drop-in fit.

<b>Classic, DX</b> .....	<b>Finish.....Width...Height...Product #...Price</b>
Green Bead (Pictured).....	Blue.....0.125".....0.250".....874-812...\$33.99
Green Bead.....	Blue.....0.125".....0.300".....639-359...\$33.99
Red Bead.....	Blue.....0.125".....0.250".....528-009...\$33.99
Red Bead.....	Blue.....0.125".....0.300".....686-396...\$33.99
<b>Pinned</b> .....	<b>Finish.....Width...Height...Product #...Price</b>
Green Bead.....	Blue.....0.125".....0.250".....334-889...\$27.99
Green Bead.....	Blue.....0.125".....0.300".....589-304...\$27.99
Red Bead.....	Blue.....0.125".....0.250".....122-897...\$27.99
Red Bead.....	Blue.....0.125".....0.300".....846-311...\$27.99

**SDM 1911 Tactical Target Rear Sights**



These Tactical Rear Sights fit Novak sight cuts. They are serrated to reduce glare and feature contoured edges that resist snagging on clothing. Steel.

<b>Rear Sight</b> .....	<b>Finish.....Product #...Price</b>
U-Notch.....	Blue.....776-687...\$38.99
Square-Notch (Pictured).....	Blue.....722-885...\$38.99

**SDM 1911 Front Sight Blank**

This Front Sight Blank fits a Novak cut. Sight has a width of .125" and a height of .245". Steel in the white. Gunsmith installation is required.



# 164-114.....\$15.99

**Sigarms Handgun Sights**



Sigarms offers these factory replacement sights for your Sig Sauer handgun. Contrast sights have a white dot on the front sight and a white bar on the rear sight. SIGLITE sights have a green Tritium dot on the front sight and 2 green Tritium dots on the rear sight. The 2 Dot Rear sights have 2 white dots. The 232 Sights are for the P232 only. All other sights fit the P220 (except fixed sight models), P225, P226, P228, P239, P245 and Sig Pro models. These sights use the factory dovetail and require a sight pusher or drift punch for installation.

<b>Front</b> .....	<b>Finish.....Model.....Height...Product #...Price</b>
Contrast.....	Blue.....#5.....6.01mm.....868-007...\$42.00
Contrast.....	Blue.....#6.....5.88mm.....734-944...\$42.00
Contrast (Pictured).....	Blue.....#7.....5.74mm.....375-378...\$42.00
Contrast.....	Blue.....#8.....5.60mm.....791-884...\$42.00
Contrast.....	Blue.....#9.....5.46mm.....116-588...\$42.00
SIGLITE.....	Blue.....#5.....6.01mm.....355-812...\$62.00
SIGLITE.....	Blue.....#6.....5.88mm.....619-284...\$62.00
SIGLITE.....	Blue.....#8.....5.60mm.....519-837...\$62.00
<b>Rear</b> .....	<b>Finish.....Model.....Height...Product #...Price</b>
2 Dot.....	Blue.....#6.....5.80mm.....476-990...\$50.00
2 Dot.....	Blue.....#7.....6.07mm.....625-444...\$50.00
2 Dot.....	Blue.....#8.....6.35mm.....336-116...\$50.00
2 Dot.....	Blue.....#9.....6.62mm.....887-314...\$50.00
2 Dot.....	Blue.....#10.....6.90mm.....757-713...\$50.00
Contrast.....	Blue.....#6.....5.80mm.....579-702...\$50.00
Contrast.....	Blue.....#7.....6.07mm.....148-720...\$50.00
Contrast.....	Blue.....#8.....6.35mm.....749-880...\$50.00
Contrast.....	Blue.....#9.....6.62mm.....593-818...\$50.00
Contrast.....	Blue.....#10.....6.90mm.....910-529...\$50.00
SIGLITE.....	Blue.....#10.....6.90mm.....719-853...\$82.00
<b>232 Rear</b> .....	<b>Finish.....Model.....Height...Product #...Price</b>
2 Dot.....	Stainless (-).....4.9mm.....911-026...\$50.00
2 Dot.....	Stainless (+).....5.8mm.....620-424...\$50.00
2 Dot.....	Blue (-).....5.2mm.....217-660...\$50.00
2 Dot.....	Stainless (-).....5.2mm.....358-318...\$50.00
2 Dot.....	Blue (+).....6.1mm.....567-854...\$50.00
2 Dot.....	Stainless (+).....6.1mm.....316-516...\$50.00
2 Dot.....	Blue (N).....5.5mm.....532-846...\$50.00
2 Dot.....	Stainless (N).....5.5mm.....444-328...\$50.00
SIGLITE.....	Blue (-).....4.9mm.....745-658...\$82.00
SIGLITE.....	Stainless (-).....4.9mm.....513-539...\$82.00
SIGLITE.....	Stainless (-).....5.2mm.....112-945...\$82.00
SIGLITE.....	Blue (+).....5.8mm.....792-137...\$82.00
SIGLITE.....	Stainless (+).....5.8mm.....713-862...\$82.00
SIGLITE.....	Stainless (+).....6.1mm.....436-724...\$82.00
SIGLITE.....	Blue (N).....5.5mm.....687-576...\$82.00
SIGLITE.....	Stainless (N).....5.5mm.....187-782...\$82.00

**SPRINGFIELD ARMORY.**

**Springfield Armory 1911 Adjustable Target Rear Sight**



This fully adjustable target-grade rear sight is the same sight that is used on the Springfield Armory custom guns. Standard Novak cut slides only. Blue.

# 721-189.....\$40.49

• Don't Forget these Customer Favorites •

**KANO LABORATORIES Kano Kroil Penetrating Oil and Bore Cleaner**



8 oz Liquid # 137-203 \$7.99

For our complete line of Solvents and other cleaning supplies, see pages 333-370.



**STI 1911 Sight Set with Tritium Inserts**



These 3-dot sights feature tritium inserts, one piece blade and dovetail front sight. STI front sight cut with standard Bo-Mar Cut in the rear. Requires installation by qualified gunsmith.

Description	Finish	Product #	Price
Adjustable	Blue	418-864	\$119.99
Fixed (Pictured)	Blue	972-429	\$86.99

**STI 1911 Adjustable Rear Sight**



This adjustable rear sight has a one piece blade and an adjustable tunnel. Fits standard Bo-Mar cut. Requires fitting and installation by a qualified gunsmith. Blue.

# 638-208 .....\$53.99

**STI 1911 Adjustable Tri-Level Sight Set (Aristocrat Cut)**



This steel sight set has a .330" high front sight with an STI front dovetail. The rear sight is an Aristocrat three position sight that has three settings to lock different elevations. Requires fitting by qualified gunsmith. Complete mounting instructions are included. Blue.

# 774-951 .....\$202.99

**STI 1911 Dovetail Front Sights**



Sights feature an STI dovetail, .175" height and .110" width. Sights require gunsmith installation.

Description	Finish	Product #	Price
Patridge	Blue	112-637	\$15.99
Ramped (Pictured)	Blue	596-990	\$15.99

**STI 1911 Fixed Rear Sight**



Sight features low profile for concealment, Novak cut and Heinie style dovetail attachment. Gunsmith installation required. Blue.

# 562-419 .....\$28.99

**Trijicon® Trijicon Night Sight 3-Dot Sets**

These sights have a precision machined steel body that holds tritium gas-filled lamps. The lamps glow bright green in the dark and have white outlines that show as white spots in the daylight. These sights are impervious to solvents and puncture and come with a 12-year limited factory warranty.



Description	Finish	Product #	Price
1911 Narrow Tenon Front, Standard Dovetail Rear	Matte	357-574	\$84.99
1911 Wide Tenon Front, Standard Dovetail Rear	Matte	476-154	\$84.99
Beretta Cougar (Green Front, Orange Rear)	Matte	549-852	\$84.99
CZ-75 with Front Dovetail (Pictured)	Matte	588-088	\$99.99
Glock 17, 19, 22, 23, 24, 26, 27, 33, 34, 35	Matte	300-412	\$84.99
Glock 20, 21, 29, 30, 31, 32, 37	Matte	302-605	\$84.99
HK P2000	Matte	837-524	\$84.99
HK USP (Except Tactical, Compact)	Matte	714-202	\$84.99
HK USP Compact	Matte	509-801	\$84.99
Ruger P85, P89	Matte	697-254	\$131.99
Ruger P90, P91, P93, P95, P97	Matte	238-774	\$131.99
Ruger P94	Matte	760-888	\$131.99
Ruger SP101 (Front Sight Only)	Matte	541-379	\$42.99
S&W Chiefs Special 40, 45	Matte	688-985	\$109.99
Sig Sauer P220, P229	Matte	292-699	\$84.49
Sig Sauer P225, P226, P228, P239	Matte	706-090	\$84.49



**TRUGLO Brite-Site Sight Sets**

Brite-Site handgun sights feature a 3-dot design for fast target acquisition and are available in 3 configurations. Fiber Optic sight sets consist of high contrast front and rear sights for daylight shooting. Tritium sight sets consist of 3 Tritium inserts that glow in the dark for low light situations. The combination Tritium Fiber Optic sets contain both Tritium and Fiber Optic technology for excellent visibility in all lighting situations. All sights are green except the Fiber Optic front sight, which is red. Durable steel construction.



Fiber Optic	Finish	Product #	Price
1911 Kimber Front and Rear Cuts	Matte	315-992	\$47.49
Glock 17, 17L, 19, 22, 23, 24, 26, 27, 33, 34, 35	Matte	150-199	\$47.49
Glock 20, 21, 29, 30, 31, 32	Matte	150-374	\$47.49
HK USP (Except USP Compact, Tactical)	Matte	496-980	\$47.49
Sig Sauer #6 Front #8 Rear	Matte	819-988	\$47.49
Sig Sauer #8 Front #8 Rear	Matte	538-535	\$47.49
Tritium	Finish	Product #	Price
1911 Kimber Front and Rear Cuts	Matte	662-830	\$76.99
Glock 17, 17L, 19, 22, 23, 24, 26, 27, 33, 34, 35	Matte	721-048	\$76.99
Glock 20, 21, 29, 30, 31, 32	Matte	294-463	\$76.99
HK USP (Except USP Compact, Tactical)	Matte	436-498	\$76.99
Sig Sauer #6 Front #8 Rear	Matte	497-145	\$76.99
Sig Sauer #8 Front #8 Rear	Matte	728-403	\$76.99
Tritium Fiber Optic	Finish	Product #	Price
1911 Kimber Front and Rear Cuts	Matte	510-902	\$94.99
Glock 17, 17L, 19, 22, 23, 24, 26, 27, 33, 34, 35	Matte	135-494	\$94.99
Glock 20, 21, 29, 30, 31, 32	Matte	886-485	\$94.99
HK USP (Except USP Compact, Tactical)	Matte	146-968	\$94.99
Sig Sauer #6 Front #8 Rear	Matte	930-962	\$94.99
Sig Sauer #8 Front #8 Rear	Matte	468-155	\$94.99



**Volquartsen Ruger Mark 2, Mark 3 TL2000 Rear Sight**



A high-quality steel replacement rear sight for the adjustable sight Ruger Mark 2 and Mark 3. This sight offers fine precision adjustments and uses the existing front sight. No gunsmithing required. Blue.

# 694-344 .....\$68.99



**Williams Handgun Fire Sight Sets**

Williams Fire sights are fiber optic light gathering sights that offer high visibility, improved sight picture and fast target acquisition. Gunsmith installation required.



Fixed	Finish	Product #	Price
Glock	Blue	266-011	\$40.99
Ruger P-Series (Except P-85)	Blue	283-595	\$39.99
Springfield XD (Pictured)	Blue	867-825	\$37.99
Taurus PT111, PT140, PT145, PT132, PT138 Millennium and Millennium Pro	Blue	969-883	\$37.99
Adjustable	Finish	Product #	Price
Ruger GP 100, Redhawk, Super Redhawk	Blue	325-201	\$39.99
Ruger Mark 2 6-7/8" Taper Barrel	Blue	638-240	\$39.99
Ruger Mark 2 Bull Barrel, 22/45	Blue	821-440	\$39.99
Ruger New Model Single Six 22 Long Rifle	Blue	433-112	\$39.99



**Wilson Combat 1911 Snag-Free Sights Sets**



Low-profile Snag-Free Steel Sights won't get hung up on loose clothing and provide a well-defined sight picture by using a simple and effective 3-dot system. Heinie dovetail front sight, standard dovetail rear sight. May require minor fitting. Black.

# 633-579 .....\$34.49

**XS 24/7 Tritium Express Handgun Sight Sets**



XS 24/7 Express Sights are made for fast sight acquisition in all light conditions. Sights feature a low profile, snag free design and are easily installed. Big Dot Sights have a large white outline on the sight surrounding the tritium insert.

<b>1911 with Novak Front, Standard Rear</b> .....	<b>Finish</b> .....	<b>Product #</b> .....	<b>Price</b> .....
Big Dot .....	Matte.....	942-834 .....	\$109.99
Standard Dot .....	Matte.....	212-860 .....	\$109.99
<b>Beretta 92, 96 with 1/4" x 60 Degree Dovetail</b> .....	<b>Finish</b> .....	<b>Product #</b> .....	<b>Price</b> .....
Big Dot .....	Matte.....	871-716 .....	\$109.99
Standard Dot .....	Matte.....	375-062 .....	\$109.99
<b>Glock 17, 19, 22, 23, 24, 26, 27, 31, 32, 33, 34, 35</b> .....	<b>Finish</b> .....	<b>Product #</b> .....	<b>Price</b> .....
Big Dot (Pictured).....	Matte.....	936-698 .....	\$109.99
Standard Dot .....	Matte.....	318-138 .....	\$109.99
<b>Glock 20, 21, 29, 30, 37</b> .....	<b>Finish</b> .....	<b>Product #</b> .....	<b>Price</b> .....
Big Dot .....	Matte.....	896-895 .....	\$109.99
Standard Dot .....	Matte.....	671-725 .....	\$109.99

<b>HK USP Full Size, Compact</b> .....	<b>Finish</b> .....	<b>Product #</b> .....	<b>Price</b> .....
Big Dot .....	Matte.....	720-414 .....	\$109.99
Standard Dot .....	Matte.....	281-012 .....	\$109.99
<b>Kimber Classic, Ultra Carry</b> .....	<b>Finish</b> .....	<b>Product #</b> .....	<b>Price</b> .....
Big Dot .....	Matte.....	422-844 .....	\$109.99
Standard Dot .....	Matte.....	394-303 .....	\$109.99
<b>Kimber Pro Carry, Combat Carry</b> .....	<b>Finish</b> .....	<b>Product #</b> .....	<b>Price</b> .....
Big Dot .....	Matte.....	140-810 .....	\$109.99
Standard Dot .....	Matte.....	217-893 .....	\$109.99
<b>Sig Sauer P225, P226, P228, P229, SP2009, SP2340</b> .....	<b>Finish</b> .....	<b>Product #</b> .....	<b>Price</b> .....
Big Dot .....	Matte.....	545-788 .....	\$109.99
Standard Dot .....	Matte.....	998-959 .....	\$109.99

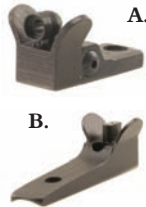
**Check out these great features on MidwayUSA.com . . .**

The screenshot shows the MidwayUSA website interface. At the top, there's a navigation bar with categories like Home, Reloading, Bullet Casting, Ammo, Shooting, Muzzleloading, Cleaning, Grips, Holsters & Magazines, Gunsmithing, Gun Parts, Optics, Books & Videos. A search bar is prominently displayed. Below the navigation, there are several promotional banners: 'Just About Everything for Your Ruger 10/22!' with a schematic diagram, 'Brand Of The Week' featuring Gerber knives, 'View Our Clickable Schematics', 'View MidwayUSA November Flyer' with a catalog image, and 'Hornady V-Max Bullets 20 Caliber (204 Diameter) 40 Grain Box of 100' with a bullet image. On the right side, there are sections for 'Catalog Center', 'GunTec TV', and 'Sign Up for Eblast'.

- Always Open**  
 Place orders and access your account information 24 hours a day, 7 days a week, with no waiting.
- Always Secure**  
 The latest in encryption technology makes sending information to us and placing orders online just as secure as it is over the telephone.
- Access to Account & Order Information**  
 Update addresses and phone numbers, view order history, track packages and more.
- Express Checkout**  
 Sign in and have all of your account information automatically entered during the checkout process.
- Order/Shipping Confirmation Emails**  
 Receive notification emails when your orders have been processed and shipped.
- Promotion & New Product Areas**  
 4 great areas: Inventory Reduction, This Month's Specials, Weekly Specials and New Products.

### Brockman's Marlin Generation 3 Winged Adjustable Sights

Sights are CNC machined from steel bar stock and feature compact wings to protect the sight in thick cover. The Peep Rear Sight features an adjustable windage and elevation screw and a removable aperture insert. The Front Sight has a screw-lock elevation adjustable sight post to ensure zeroing with a wide range of bullet weights. Drop-in for the Marlin 336, 444, 1894 and 1895 lever action rifles but easily adapted to many other rifles and shotguns. Mounting screws included.



Description	Finish	Product #	Price
Peep Rear Sight (A)	Black	572-708	\$124.99
Front Sight (B)	Black	387-944	\$74.99

### Brockman's Patridge Style Front Sights

A traditional modified Patridge style post front sight. CNC machined from steel bar stock with a serrated anti-reflective face. The .495" height allows it to be fitted to many rifle and handgun applications. Fits 3/8" dovetail.



Description	Finish	Product #	Price
0.080" Wide	Black	198-048	\$23.99
0.125" Wide	Black	734-434	\$23.99



### DPMS AR-15 National Match Rear Sight Aperture Assembly



Replaces standard A2 rear sight. Features 1/4 MOA windage and 1/2 MOA elevation adjustments. Includes .030" and .040" diameter apertures. Other apertures available (sold separately).

Description	Product #	Price
Sight Assembly	701-381	\$97.99
Apertures	Product #	Price
0.046" Aperture	690-479	\$15.79
0.052" Aperture	703-718	\$12.79

### DPMS AR-15 Mangonel Pop-Up Rear Sight



This rear sight mounts to any Picatinny rail or Weaver-style base. It folds down out of the way for use with optical sights and flips up for instant use. Lightweight, durable aluminum construction. Matte.

# 268-888 .....\$96.99

### DPMS AR-15 Rear Sight Components

These are Mil-Spec components for A1 and A2 rear sight assemblies.

A1 Components	Finish	Product #	Price
Aperture	Matte	314-012	\$8.49
Base Spring	Matte	736-563	\$1.09
Detent	Matte	144-337	\$1.09
Detent Spring	Matte	888-794	\$1.09
Rapidex Rear Sight Windage Knob	Matte	353-544	\$8.29
Windage Drum	Matte	826-689	\$2.79
Windage Screw	Matte	419-040	\$3.59
A2 Components	Finish	Product #	Price
Adjustment Knob Spring Pin	Matte	237-590	\$1.09
Base Aperture	Matte	556-160	\$9.49
Base Ball Bearing	Matte	974-546	\$1.09
Base Elevation Knob	Matte	351-757	\$6.69
Base Elevation Knob Spring	Matte	977-531	\$1.09
Base Flat Spring	Matte	680-482	\$1.39
Base Index Elevation	Matte	510-708	\$6.69
Base Index Screw	Matte	853-507	\$1.39
Base Lug	Matte	971-421	\$21.49
Base Spring	Matte	414-109	\$1.09
Base Spring Pin	Matte	320-774	\$1.09
Base Windage Knob	Matte	560-661	\$6.69
Base Windage Knob Screw	Matte	273-614	\$2.79
Hooded Aperture Rear Sight	Matte	640-139	\$15.79

### DPMS AR-15 Front Sight Posts



Description	Product #	Price
A1 Round Style (Pictured)	114-551	\$2.39
A2 Square Style	373-128	\$4.39
A2 National Match	463-361	\$10.79
DCM-CMP	844-511	\$13.79
Extended Front Sight Post	810-857	\$15.79
Levang Aperture	281-804	\$22.99

### DPMS AR-15 Ashley Front Sight Posts



Drop-in front sight replacement, double faced so it may be rotated for 2.5 MOA elevation adjustment on standard sight radius. Dramatically improves sight picture in low light conditions. The .080" post has a .030" white stripe, and the .100" post has a .040" white strip.

Description	Finish	Product #	Price
0.080" Wide	Matte	411-921	\$31.49
0.100" Wide	Matte	774-068	\$31.49

### DPMS AR-15 Ashley Ghost Ring Rear Aperture



Drop-in replacement aperture rear sight for the A1 or A2. Larger "Ghost Ring" aperture has a .230" aperture with a .070" wall thickness for greater light transmission. The smaller precision aperture has a .100" aperture with a .100" wall thickness for a more precise sight picture. Made of 416 stainless steel, blackened with matte finish.

# 610-584 .....\$31.49

### DPMS AR-15 Front Sights



Standard fits .750" diameter barrels and features 3 Picatinny rails on the sides and bottom. Bull Barrel sight fits .936" diameter barrels. Quick Detachable front sight fits Weaver-style or Picatinny rails and uses standard A2 sight components (sold separately).

Description	Finish	Product #	Price
0.750" Standard Barrels (Pictured)	Matte	766-401	\$61.99
<i>Includes 3 Picatinny Rails</i>			
0.936" Post-Ban Bull Barrels	Matte	113-761	\$47.99
Quick Detachable	Matte	536-347	\$50.99

### DPMS AR-15 Front Sight Components

Mil-spec replacement parts for the standard AR-15 front sight.

Description	Product #	Price
Base	980-577	\$45.99
Detent	641-178	\$1.39
Detent Spring	917-536	\$1.09
Taper Pin	839-303	\$0.99

### DPMS AR-15 Flattop Detachable Rear Sight



Attaches to flattop Picatinny rails. Height will line up with standard front sights. Features 600 meters of elevation. Aluminum and steel construction. Matte.

# 873-271 .....\$74.99

### EOTech AR-15 Flattop Rear Flip-Up Sights



These Flip-Up Rear Sights are perfect for use as a back-up on a flat top AR-15. Dual Aperture sight features 2 apertures with windage and elevation adjustments.

Description	Finish	Product #	Price
Dual Aperture	Matte	334-009	\$146.99
Same Plane Aperture (Pictured)	Matte	175-544	\$159.99

**John Masen Springfield 1903A3 Sight Cover**



Sight cover is marked with a flaming bomb on one side and initialled "R" on the other, steel.

Description	Product #	Price
Blue	325-694	\$5.89
Parkerized	552-020	\$5.89



**JP Enterprises Detachable Adjustable Front Sight Base**



Adjustable Base fits into any standard dovetail cut and will accept any standard dovetail globe sight. The Lyman #93 Globe Front Sight comes with 6 Lyman inserts and 10 Shaver inserts. Matte.

Description	Product #	Price
Base	944-506	\$87.99
Base with Lyman #93 Globe Front Sight (Pictured)	119-467	\$139.99

**JP Enterprises AR-15 Short Range Tactical Sight**



Short Range Tactical Sight can be mounted on your hand-guard and allows for fast, reflexive engagement at point blank range to 40 yards. Aluminum. Matte.

# 191-788	\$94.99
-----------	---------

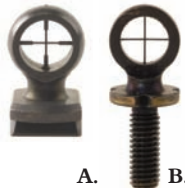
**KNIGHT Knight Muzzleloading Fiber Optic Front Sights**



High visibility Fiber Optic hunting sight beads and blades that are ideal for shooting in low light conditions. Sights fit any Knight Rifle.

Description	Product #	Price
Green	133-368	\$9.99
Red (Pictured)	276-423	\$9.99

**KNS Precision KNS Reticle Front Sights**



KNS Precision Reticle front sights have a CNC machined blackened brass housing that offers a large, bright field of view. Standard sights have a housing that is .082" thick, and Hooded sights have .250" housing for increased protection of the crosshair and better light control. Crosshairs are heat-treated beryllium wire. Duplex thick section is .020 diameter and thin section is .010 in diameter. Drop-in installation (M1 Garand sight requires minor fitting). Matte.

Hooded	Reticle	Product #	Price
3/8" Dovetail .425" High (A)	Duplex	137-119	\$26.99
3/8" Dovetail .425" High	Standard Crosshair	612-521	\$26.99
3/8" Dovetail .525" High	Duplex	313-424	\$26.99
3/8" Dovetail .525" High	Standard Crosshair	325-661	\$26.99
3/8" Dovetail .625" High	Duplex	108-805	\$26.99
3/8" Dovetail .625" High	Standard Crosshair	291-109	\$26.99
AR-15	Duplex	498-001	\$26.99
AR-15	Standard Crosshair	188-238	\$26.99
FN FAL, STG-58	Duplex	275-713	\$26.99
FN FAL, STG-58	Standard Crosshair	217-053	\$26.99
LI-A1	Duplex	877-519	\$26.99
LI-A1	Standard Crosshair	744-675	\$26.99
<b>Standard</b>	<b>Reticle</b>	<b>Product #</b>	<b>Price</b>
AK-47, MAK-90, SKS	Duplex	693-844	\$26.99
AR-15 (B)	Standard Crosshair	504-604	\$26.99
HK 91, 93, 94, MP5, SP89	Duplex	891-510	\$26.99
M1 Garand	Duplex	884-835	\$26.99

**Lyman Lyman #12S 3/8" Dovetail Slot Blank**



This handy 3/8" Slot Blank fills in the dovetail when your sights are removed.  
# 976-407 .....\$5.99

**Lyman Muzzleloader Hunting Sights**



Sights have .360" dovetail that fits most European imports. Set includes a folding leaf rear sight that is fully adjustable for elevation and a white bead front sight that stands out in low light conditions.

Description	Finish	Product #	Price
Sight Set (Pictured)	Blue	617-460	\$19.99
White Bead Front	Blue	607-874	\$9.79
Folding Leaf Rear	Blue	611-289	\$14.29

**Lyman Front Sights**



#3 sights are designed to be mounted into a barrel dovetail, while #31 and #37 are designed to mount on ramps. #3 and #31 have 1/16" diameter bead, and the #37 has 3/32" bead.

#3 Gold Bead	Product #	Price	#31 Gold Bead	Product #	Price
0.290" High	357-310	\$9.59	0.330" High	402-596	\$9.59
0.330" High	357-456	\$9.59	0.345" High	405-135	\$9.59
0.345" High	357-770	\$9.59	0.360" High	408-137	\$9.59
0.360" High	361-813	\$9.59	0.390" High	415-473	\$9.59
0.390" High	362-419	\$9.59	0.410" High	416-658	\$9.59
0.410" High	363-457	\$9.59	0.445" High	419-100	\$9.59
0.445" High	365-876	\$9.59	0.500" High	422-974	\$9.59
0.500" High	368-152	\$9.59	0.560" High	425-394	\$9.59
0.560" High	374-543	\$9.59	<b>#31 Ivory Bead</b>	<b>Product #</b>	<b>Price</b>
<b>#3 Ivory Bead</b>	<b>Product #</b>	<b>Price</b>	0.240" High	430-479	\$9.59
0.290" High	381-632	\$9.59	0.290" High	433-937	\$9.59
0.330" High	386-089	\$9.59	0.330" High	438-104	\$9.59
0.345" High	386-382	\$9.59	0.345" High	441-103	\$9.59
0.360" High	386-548	\$9.59	0.360" High	444-711	\$9.59
0.390" High	388-195	\$9.59	0.390" High	452-895	\$9.59
0.410" High	388-967	\$9.59	0.410" High	459-401	\$9.59
0.445" High	391-174	\$9.59	0.445" High	466-544	\$9.59
0.500" High	392-718	\$9.59	0.500" High	467-586	\$9.59
0.560" High	392-741	\$9.59	0.560" High	468-504	\$9.59
<b>#31 Gold Bead</b>	<b>Product #</b>	<b>Price</b>	<b>#37 Gold Bead</b>	<b>Product #</b>	<b>Price</b>
0.240" High	396-569	\$9.59	0.410" High	478-571	\$9.59
0.290" High	402-472	\$9.59	0.560" High	481-383	\$9.59

**Lyman 16 Folding Leaf Sights**



This open rear sight with adjustable elevation blade is the perfect auxiliary sight for scope-mounted rifles. When not in use, the sight folds close to the barrel. Fits 3/8" dovetail.

Description	Finish	Product #	Price
0.345" to 0.445" High	Blue	516-164	\$13.99
0.400" to 0.500" High	Blue	214-020	\$13.99
0.500" to 0.600" High	Blue	166-239	\$13.99

**Lyman 17 Globe Front Sights**



Sights are machined from a solid piece of steel. Height listed is measured from the bottom of the dovetail to the center of the aperture. Includes 8 target inserts that are locked in place with a threaded cap. Inserts include 2 post inserts (.050" and .100" wide), 1 bead insert (.062") and 5 aperture-type inserts.

3/8" Dovetail	Finish	Product #	Price
0.404" High	Blue	752-564	\$30.99
0.494" High	Blue	817-066	\$30.99
0.584" High	Blue	191-002	\$30.99
0.852" High	Blue	509-264	\$30.99
<b>0.360" Dovetail</b>	<b>Finish</b>	<b>Product #</b>	<b>Price</b>
0.494" High	Blue	504-955	\$30.99
<b>Accessory</b>	<b>Finish</b>	<b>Product #</b>	<b>Price</b>
Sight Insert Set	Blue	765-181	\$13.29

**Lyman** Lyman 20 Globe Front Sights



These steel sights feature a large 7/8" diameter tube that offers the shooter a large field of view. Includes 2 post and 5 aperture inserts. Accepts other Anschutz-style inserts. Height given is measured from bottom of dovetail to center of aperture.

0.375" Dovetail	Finish	Product #	Price
0.825" High	Blue	510-642	\$35.99
0.700" High	Blue	511-517	\$37.99
<b>Accessory</b>	<b>Product #</b>	<b>Price</b>	
Insert Set	766-991	\$13.29	

**Lyman 93 Match Globe Front Sight**

Fits the target sight dovetail mounting block commonly used on many match rifles. Features a large 7/8" diameter tube for a wide field of view. Quick release thumbscrew mounting allows quick conversion from aperture sights to optics. Sight mounts on a standard target dovetail base (sold separately) and includes 2 post and 5 aperture inserts. Accepts other Anschutz-style inserts. Height is .550" from bottom of dovetail to center of aperture. Blue.



Description	Product #	Price
Globe Front Sight	511-637	\$49.49
Standard Dovetail Base 0.315" High, 0.562" Hole Spacing	466-831	\$10.79

**Lyman Uni-Dot Fiber Optic Shotgun Sights**

Sights utilize a special fiber optic rod to produce a bright dot that can only be seen when the gun is properly aligned with the shooter's aiming eye. They enable shooters to aim with both eyes focused on the target and help to develop proper shooting technique because the dot will disappear if you raise the gun improperly or lift your head. The P100 Series comes with either a green or red dot (as noted), and the P200 and P300 Series come with both a red and green fiber optic rod (except where noted). No gunsmithing required.

P100 Series with 4mm Dot	Color	Product #	Price
Fits .290" Rib (A)	Green	721-469	\$15.99
Fits .290" Rib	Red	266-899	\$16.79
Fits .255" Rib	Green	966-454	\$16.79
Fits .255" Rib	Red	788-963	\$12.29
Fits .325" Rib	Green	491-326	\$16.79
Fits .325" Rib	Red	627-699	\$16.79
Fits .355" Rib	Green	583-125	\$16.79
Fits .355" Rib	Red	715-101	\$16.79
Fits .385" Rib	Green	363-008	\$16.79
Fits .385" Rib	Red	399-784	\$16.79
Fits .410" Rib	Green	110-565	\$16.79
Fits .410" Rib	Red	617-276	\$16.79
Fits .450" Rib	Green	649-447	\$16.79
Fits .450" Rib	Red	490-247	\$16.79
P200 Series with 2mm Dot	Color	Product #	Price
Adhesive Mount	Green	616-135	\$16.99
Adhesive Mount (B)	Red	685-612	\$16.99
Adhesive Mount	Red and Green	112-218	\$18.99
Fits .250" Rib	Red and Green	852-024	\$20.99
Fits .312" Rib	Red and Green	498-382	\$20.99
Fits .375" Rib	Red and Green	369-380	\$20.99
P300 Series with 3mm Dot	Color	Product #	Price
Adhesive Mount	Green	331-397	\$16.99
Adhesive Mount	Red	181-403	\$16.99
Adhesive Mount	Red and Green	316-587	\$18.99
Fits .250" Rib	Red and Green	197-859	\$20.99
Fits .312" Rib	Red and Green	832-539	\$20.99
Fits .375" Rib	Red and Green	635-412	\$20.99

**Lyman Uni-Dot Snap-On Shotgun Sights**

Snaps onto the barrel of most ribless 12 Gauge shotguns. Designed for law enforcement use, but it works great for any hunting application. The Fiber Optic sight glows bright green in the daylight, and the Day or Night sight comes with 4 Cyalume chemical Lightsticks for use in low light situations.



Description	Color	Product #	Price
Day or Night	Green	285-164	\$32.99
Fiber Optic	Green	219-859	\$24.99



**Marble's Rear Sights**



These steel sights were offered as a factory-installed option on many early Winchester lever action rifles. They feature a unique double step elevation adjustment and a reversible sight notch piece with both U-shaped and V-shaped notches for precision sighting. Carbine-Style blade is 1-7/8" long and the Rifle-Style blade is 2-3/4" long.

Carbine-Style	Finish	Height	Product #	Price
Flat Top	Blue	0.275"-0.505"	108-044	\$17.99
Flat Top	Blue	0.350"-0.630"	378-163	\$17.99
Semi-Buckhorn	Blue	0.275"-0.505"	343-758	\$17.99
Semi-Buckhorn	Blue	0.350"-0.630"	477-914	\$17.99
Full Buckhorn	Blue	0.300"-0.510"	323-720	\$17.99
Rifle-Style	Finish	Height	Product #	Price
Flat Top	Blue	0.300"-0.510"	593-004	\$17.99
Flat Top	Blue	0.350"-0.630"	780-441	\$17.99
Semi-Buckhorn	Blue	0.300"-0.510"	120-698	\$17.99
Semi-Buckhorn	Blue	0.350"-0.630"	213-658	\$17.99
Full Buckhorn	Blue	0.300"-0.510"	646-052	\$17.99

**Marble's Rear Sight Step Elevators**

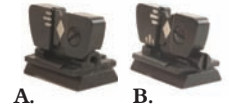


The Step Elevator controls the height adjustment on rear sights. The Double Step Elevator is used on most Marble's Short Blade and Long Blade Sporting rear sights. The single step elevator is used on many rear sights found on 22 rimfire rifles. Steel.

Single Step	Finish	Product #	Price
0.050" Wide	Blue	395-228	\$2.29
0.080" Wide	Blue	395-311	\$2.29
Double Step	Finish	Product #	Price
1-7/8" Short Blade	Blue	398-504	\$2.19
2-3/4" Long Blade	Blue	410-886	\$2.19

**Marble's Folding Leaf Rear Sights**

The Folding Leaf Rear Sight is designed to fold down flat against the barrel when using a Peep Sight or scope. Windage Adjustable Models are screw adjustable for windage correction. The notch piece is adjustable for height and has both U-shaped and V-shaped notches. A hand-painted white enamel diamond helps draw your eye to the center of the notch.



Flat Top Sight	Finish	Product #	Price
0.360" High (A)	Blue	337-295	\$17.99
0.460" High	Blue	348-999	\$17.99
0.520" High	Blue	350-700	\$17.99
Windage Adjustable Sight	Finish	Product #	Price
0.360" High (B)	Blue	365-177	\$18.99
0.460" High	Blue	369-340	\$18.99
0.520" High	Blue	376-866	\$18.99
Accessory	Product #	Price	
Notch Piece and Retaining Screw	390-142	\$1.39	

**Marble's Sight Slot Blank**



This 3/8" slot blank is designed to fill the dovetail cut in the top of the barrel where a sight has been removed.

# 383-424	\$4.99
-----------	--------



Which of the following firearms was not invented by John Moses Browning?

- Colt Model 1911
- Remington Model 11
- Winchester 1894
- Remington 700

See page 693 for answer.



**Marble's Fiber Optic Uni-Ramp Front Sights**

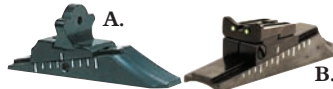


Uni-Ramp Front Sights can be used on rifles, shotguns and muzzleloaders. The Uni-Ramp features a brilliantly glowing integral fiber optic sight bead, UV protected for long life. Includes 6 x 48 mounting screws.

0.625" Barrel Diameter	Finish	Color	Product #	Price
0.405" High	Blue	Orange	773-001	\$15.99
0.405" High	Blue	Green	777-670	\$15.99
0.470" High	Blue	Orange	779-724	\$15.99
0.470" High	Blue	Green	779-990	\$15.99
0.750" Barrel Diameter	Finish	Color	Product #	Price
0.405" High	Blue	Orange	781-104	\$15.99
0.405" High	Blue	Green	782-815	\$15.99
0.470" High	Blue	Orange	784-186	\$15.99
0.470" High	Blue	Green	797-024	\$15.99
0.875" Barrel Diameter	Finish	Color	Product #	Price
0.405" High	Blue	Orange	810-516	\$15.99
0.405" High	Blue	Green	811-386	\$15.99
0.470" High	Blue	Orange	812-166	\$15.99
0.470" High	Blue	Green	813-217	\$15.99

**Marble's Universal Rear Sights**

Machined from bar stock steel and hot blued for durability. Sights feature screw adjustments for windage and elevation and .420" to .520" height adjustment. #20 Sights come with a .150" diameter peep blade, a .085" diameter peep blade and a U-Shaped Semi-Buckhorn blade. Fiber Optic replacement blades will not fit #20 Sights.



#20 Sight	Hole Spacing	Product #	Price
0.775" Diameter Barrel (A)	9/16"	186-506	\$25.99
0.775" Diameter Barrel	5/8"	186-134	\$25.99
0.875" Diameter Barrel	9/16"	195-926	\$25.99
0.875" Diameter Barrel	5/8"	188-182	\$25.99
1.00" Diameter Barrel	9/16"	198-631	\$25.99
1.00" Diameter Barrel	5/8"	197-220	\$25.99
Octagon Barrel	9/16"	212-640	\$25.99
Octagon Barrel	5/8"	210-353	\$25.99
Fiber Optic Sight Green	Hole Spacing	Product #	Price
0.775" Diameter Barrel	9/16"	226-297	\$30.49
0.875" Diameter Barrel (B)	5/8"	215-271	\$30.49
1.00" Diameter Barrel	9/16"	249-392	\$30.49
1.00" Diameter Barrel	5/8"	217-929	\$30.49
Octagon Barrel	9/16"	259-727	\$30.49
Octagon Barrel	5/8"	223-285	\$30.49
Fiber Optic Sight Orange	Hole Spacing	Product #	Price
0.775" Diameter Barrel	9/16"	223-973	\$30.49
0.875" Diameter Barrel	5/8"	213-096	\$30.49
1.00" Diameter Barrel	9/16"	235-200	\$30.49
1.00" Diameter Barrel	5/8"	216-992	\$30.49
Octagon Barrel	9/16"	259-722	\$30.49
Octagon Barrel	5/8"	220-766	\$30.49
Replacement Blades	Product #	Price	
Fiber Optic Green	316-995	\$11.79	
Fiber Optic Orange	315-331	\$11.79	
Peep-Style Blade .085"	316-115	\$7.99	
Peep-Style Blade .150"	317-601	\$7.99	
U-Shaped Semi-Buckhorn	314-931	\$7.99	

**Marble's Front Sight Ramps**



These front ramps are CNC machined from bar stock steel and hot blued. Ramps are .340" wide and feature a standard 3/8" dovetail. The top surfaces are serrated to eliminate glare. Easily installed with a single 8 x 40 screw (included).

0.100" High	Product #	Price
0.625" Diameter Barrel	928-082	\$10.49
0.687" Diameter Barrel	812-206	\$10.49
0.875" Diameter Barrel	763-623	\$10.49
Octagon Barrel	717-869	\$10.49
0.225" High	Product #	Price
0.625" Diameter Barrel	724-437	\$10.49
0.687" Diameter Barrel	287-478	\$10.49
0.875" Diameter Barrel	961-039	\$10.49
Octagon Barrel	110-369	\$10.49

**Marble's Front Sights**



Sights are windage drift adjustable and fit a standard 3/8" dovetail. Minor fitting may be required. Blue steel.

Description	1/16" Bead	3/32" Bead	Height	Width	Price
Gold Bead (A)	412-568	414-656	0.260"	0.340"	\$12.29
Ivory Bead (B)	418-160	430-733	0.260"	0.340"	\$12.29
Gold Bead	432-350	433-989	0.290"	0.340"	\$12.29
Ivory Bead	436-507	441-752	0.290"	0.340"	\$12.29
Gold Bead	148-121	267-684	0.312"	0.340"	\$12.29
Ivory Bead	520-546	461-234	0.312"	0.340"	\$12.29
Fiber Optic Orange (C)	N/A	444-196	0.312"	0.340"	\$14.79
Fiber Optic Green	N/A	448-808	0.312"	0.340"	\$14.79
Gold Bead	459-194	459-706	0.312"	0.531"	\$12.29
Ivory Bead	468-243	479-079	0.312"	0.531"	\$12.29
Fiber Optic Orange	N/A	479-934	0.312"	0.531"	\$14.79
Fiber Optic Green	N/A	483-551	0.312"	0.531"	\$14.79
Gold Bead	489-910	491-558	0.343"	0.340"	\$12.29
Ivory Bead	492-447	494-429	0.343"	0.340"	\$12.29
Fiber Optic Orange	N/A	495-703	0.343"	0.340"	\$14.79
Fiber Optic Green	N/A	499-988	0.343"	0.340"	\$14.79
Gold Bead	511-177	517-672	0.343"	0.531"	\$12.29
Ivory Bead	517-675	518-375	0.343"	0.531"	\$12.29
Fiber Optic Orange	N/A	520-972	0.343"	0.531"	\$14.79
Fiber Optic Green	N/A	524-104	0.343"	0.531"	\$14.79
Gold Bead	183-905	490-862	0.375"	0.340"	\$12.29
Ivory Bead	636-987	165-878	0.375"	0.340"	\$12.29
Fiber Optic Orange	N/A	531-090	0.375"	0.340"	\$14.79
Fiber Optic Green	N/A	539-657	0.375"	0.340"	\$14.79
Gold Bead	545-038	548-319	0.375"	0.531"	\$12.29
Ivory Bead	549-073	556-699	0.375"	0.531"	\$12.29
Fiber Optic Orange	N/A	560-721	0.375"	0.531"	\$14.79
Fiber Optic Green	N/A	562-032	0.375"	0.531"	\$14.79
Gold Bead	566-261	567-981	0.410"	0.340"	\$12.29
Ivory Bead	570-991	574-087	0.410"	0.340"	\$12.29
Fiber Optic Orange	N/A	575-409	0.410"	0.340"	\$14.79
Fiber Optic Green	N/A	581-006	0.410"	0.340"	\$14.79
Gold Bead	581-128	583-923	0.410"	0.531"	\$12.29
Ivory Bead	598-890	615-137	0.410"	0.531"	\$12.29
Fiber Optic Orange	N/A	626-624	0.410"	0.531"	\$14.79
Fiber Optic Green	N/A	637-862	0.410"	0.531"	\$14.79
Gold Bead	104-496	158-300	0.450"	0.340"	\$12.29
Ivory Bead	474-393	779-532	0.450"	0.340"	\$12.29
Fiber Optic Orange	N/A	641-663	0.450"	0.340"	\$14.79
Fiber Optic Green	N/A	642-219	0.450"	0.340"	\$14.79
Gold Bead	644-314	335-464	0.450"	0.531"	\$12.29
Ivory Bead	648-110	650-924	0.450"	0.531"	\$12.29
Fiber Optic Orange	N/A	654-861	0.450"	0.531"	\$14.79
Fiber Optic Green	N/A	655-240	0.450"	0.531"	\$14.79
Gold Bead	233-915	551-103	0.500"	0.340"	\$12.29
Ivory Bead	272-043	421-870	0.500"	0.340"	\$12.29
Fiber Optic Orange	N/A	657-571	0.500"	0.340"	\$14.79
Fiber Optic Green	N/A	669-833	0.500"	0.340"	\$14.79
Gold Bead	677-084	680-042	0.500"	0.531"	\$12.29
Ivory Bead	681-837	682-174	0.500"	0.531"	\$12.29
Fiber Optic Orange	N/A	687-404	0.500"	0.531"	\$14.79
Fiber Optic Green	N/A	689-011	0.500"	0.531"	\$14.79
Gold Bead	800-624	558-406	0.530"	0.340"	\$12.29
Ivory Bead	610-318	441-530	0.530"	0.340"	\$12.29
Fiber Optic Orange	N/A	691-961	0.530"	0.340"	\$14.79
Fiber Optic Green	N/A	695-479	0.530"	0.340"	\$14.79
Gold Bead	695-694	711-313	0.530"	0.531"	\$12.29
Ivory Bead	712-043	716-724	0.530"	0.531"	\$12.29
Fiber Optic Orange	N/A	727-133	0.530"	0.531"	\$14.79
Fiber Optic Green	N/A	729-347	0.530"	0.531"	\$14.79
Gold Bead	735-987	738-533	0.570"	0.531"	\$12.29
Ivory Bead	740-132	741-962	0.570"	0.531"	\$12.29
Fiber Optic Orange	N/A	754-039	0.570"	0.531"	\$14.79
Fiber Optic Green	N/A	772-466	0.570"	0.531"	\$14.79

**MEPROLIGHT®** Meprolight Tru-Dot Tritium Sight Set

Meprolight Tru-Dot sights are up to 20% brighter than other tritium sights. The front dot is slightly brighter than the rear sight to help the shooter focus on the target. Light tubes are sealed with a patented bonding process that makes them impervious to solvents and oils and the sight bodies are constructed of steel. Tru-Dot sights have a 12-year illumination warranty.



Set	Color	Finish	Product #	Price
AR-15 A2	Green Front/Green Rear	Matte	796-210	\$79.99
Front Sight	Color	Finish	Product #	Price
AR-15	Green	Matte	227-768	\$34.99
Ruger Mini-14	Green	Matte	441-638	\$39.99

**NECG Classic Express Sights and Bases**



Unfinished Express Sights feature a standing blade and folding leaf blades. Sight requires purchase of separate base. The Base height listed is to bottom of dovetail. Both Sights and Bases are steel and unfinished in the white. Blades are supplied flat to allow for customization with a V or U notch.

Sights	Product #	Price
1-Leaf 31/32" x 45/64", Standing Blade 13/32", Leaf 17/32"	690-716	\$74.99
2-Leaf 1-13-32" x 45/64", Standing Blade 15/32", 1st Leaf 35/64", 2nd Leaf 35/64"	861-630	\$84.99
3-Leaf (Pictured) 2" x 11/16", Standing Blade 15/32", 1st Leaf 1/2", 2nd Leaf 1/2", 3rd Leaf 17/32"	915-728	\$94.99
Island Bases	Product #	Price
1-Leaf	942-912	\$47.99
2-Leaf	737-328	\$47.99
3-Leaf	984-482	\$49.99

**Millett** Millett High Visibility Front Rifle Sights



Makes rapid target acquisition much easier, especially in low light situations. Fits Winchester, Marlin and Browning rifles. Sight is .400" high. Steel construction.

Description	Finish	Product #	Price
Orange Bar	Black	992-416	\$9.99
White Bar	Black	789-384	\$9.99

**Millett Adjustable Rear Rifle Sight**



This steel rear sight fits a standard 3/8" dovetail and works with the rifle's factory front sight. It features positive click adjustments and a white outline for quick target acquisition. Height is .360". Black.

# 113-125	\$39.99
-----------	---------

**Mojo Phase 3 Ghost Ring Sight Sets**



These precision-milled, steel sight sets have a double recessed front aperture sight that is specifically designed to work with a rear aperture sight. Rear sight features screw-adjustable windage and elevation. Installation is easy and involves no alteration to your rifle.

Sight Set	Finish	Product #	Price
Mauser K98k and Variations	Matte	262-565	\$65.99
Mauser 98	Matte	763-458	\$65.99
Mosin-Nagant (Pictured)	Matte	798-568	\$65.99
Schmidt-Rubin K31 and K11	Matte	175-210	\$65.99
Rear Sight	Finish	Product #	Price
AK-47	Matte	980-959	\$43.99
Mauser 98	Matte	687-587	\$43.99
Mosin-Nagant	Matte	333-531	\$43.99
SKS	Matte	221-817	\$43.99
Swedish Mauser 38	Matte	410-724	\$43.99

**NECG Classic Express Sights with Island Bases**



These attractive, classically designed bases have an engraved center sight line and blue finish. Overall length is 3.228" and the base width is .590". The standing blade is .670", the first leaf is .650", the second leaf is .670" and the third leaf is .709". Blades are supplied flat to allow for customization with a V or U notch. Sights are blue and bases are steel in the white.

1-Leaf	Product #	Price
Small (.600" to .675" Dia. Barrel) (Pictured)	362-091	\$114.99
Medium (.675" to .730" Dia. Barrel)	389-755	\$114.99
Large (.730" to .830" Dia. Barrel)	260-815	\$114.99
Extra-Large (.830" to .930" Dia. Barrel)	818-872	\$114.99
2-Leaf	Product #	Price
Small (.600" to .675" Dia. Barrel)	217-974	\$124.99
Medium (.675" to .730" Dia. Barrel)	118-284	\$124.99
Large (.730" to .830" Dia. Barrel)	689-217	\$124.99
Extra-Large (.830" to .930" Dia. Barrel)	847-363	\$124.99
3-Leaf	Product #	Price
Small (.600" to .675" Dia. Barrel) (Pictured)	959-183	\$134.99
Medium (.675" to .730" Dia. Barrel)	874-119	\$134.99
Large (.730" to .830" Dia. Barrel)	117-414	\$134.99
Extra-Large (.830" to .930" Dia. Barrel)	236-598	\$134.99

**NECG Classic Adjustable Rear Sights**



These quality steel rear sights offer screw type elevation adjustment, drift windage adjustment and are held in place with a 6-48 screw. Sights measure 2-5/32" x 9/16" with a height of 9/16" at the lowest setting and an upward adjustment of 19/32".

Description	Finish	Product #	Price
.600 to .675" Diameter Barrel	Blue	510-829	\$73.99
.675 to .730" Diameter Barrels	Blue	550-434	\$73.99
.730 to .830" Diameter Barrel	Blue	385-268	\$73.99
.830 to .930" Diameter Barrels	Blue	914-611	\$73.99

**NECG Dovetail Fixed Blade Rear Sights**



These rear sights require a notch to be cut and are windage adjustable by drifting them left or right in the dovetail. Base is designed to be sweated to a barrel, but can also be drilled and tapped for screw mounting. Unfinished steel in the white.

Sight	Product #	Price
Slanted Forward Width: .708", Length: .630", Height: .630"	995-116	\$17.99
Straight Width: .708", Length: .630", Height: .630"	774-844	\$17.99
Straight with Folding Leaf (Pictured) Width: .750", Length: .620", Height: Standing .550", Folding .608"	418-254	\$34.99
Base	Product #	Price
Base Width: .551", Length: 2", Height: .060"	496-299	\$34.49

**NECG** Basic Front Ramp



Ramps are slotted to accept the Masterpiece front sight blades and sight hoods. They can be soldered or screwed on. Gunsmith installation required. Steel in the white. Measure 3-1/2" x 5/8".

Description	Product #	Price
Flat Base	224-702	\$19.99
Concave Base (Pictured)	465-744	\$19.99





**NECG Front Ramp Hoods**

These quality steel front sight hoods are designed to fit the New England Custom Gun Basic Front Ramp and feature a knurled front.



Description	Finish	Product #	Price
.551" Inside Diameter	Blue	386-074	\$16.99
.630" Inside Diameter	Blue	395-248	\$16.99
.708" Inside Diameter	Blue	783-255	\$16.99

**NECG Masterpiece Banded Front Ramps**

This steel front ramp offers a modular plunger design that allows quick installation and removal of any of the Masterpiece front sights and hoods.

The bands are also stretchable to accommodate custom barrel dimensions. Internal diameter is straight, not tapered. Steel in the White.



Description	Height	Product #	Price
.551" Inside Dia.	0.500"	219-874	\$66.99
.571" Inside Dia.	0.421"	895-439	\$66.99
.590" Inside Dia.	0.421"	981-848	\$66.99
.610" Inside Dia.	0.421"	597-340	\$66.99
.630" Inside Dia.	0.421"	981-590	\$66.99
.650" Inside Dia.	0.421"	486-254	\$66.99
.670" Inside Dia.	0.386"	573-443	\$66.99
.689" Inside Dia.	0.386"	219-842	\$66.99
.708" Inside Dia.	0.386"	447-215	\$66.99
.728" Inside Dia.	0.386"	148-513	\$66.99
.748" Inside Dia.	0.362"	743-094	\$66.99
.768" Inside Dia.	0.362"	682-750	\$66.99
.788" Inside Dia.	0.362"	665-387	\$66.99
.827" Inside Dia.	0.362"	440-385	\$66.99

**NECG Masterpiece Banded Front Ramp Hoods**

These steel front sight hoods are made especially for the Masterpiece Banded Front Ramp. These hoods are not only attractive, they cut glare, provide a better sight picture and protect the front sight. Plunger style attachment for easy removal.



Description	Finish	Product #	Price
.551" Inside Diameter	Blue	690-837	\$17.79
.630" Inside Diameter	Blue	273-384	\$17.79
.708" Inside Diameter	Blue	711-671	\$17.79

**NECG Masterpiece Ramp Interchangeable Sights**

Steel sights made specifically for the Masterpiece ramp (sold separately).



5/64" Brass Bead	Finish	Product #	Price
.177" High	Blue	571-033	\$15.99
.197" High	Blue	455-404	\$15.99
.237" High	Blue	813-480	\$15.99
.256" High	Blue	286-118	\$15.99
.276" High	Blue	488-374	\$15.99
.315" High	Blue	513-740	\$15.99
.355" High	Blue	911-052	\$15.99
.394" High	Blue	359-020	\$15.99
3/32" Red Fiber Optic	Finish	Product #	Price
.256" High (Pictured)	Blue	459-242	\$27.99
.276" High	Blue	917-439	\$27.99
.315" High	Blue	123-218	\$27.99
.355" High	Blue	515-330	\$27.99
3/32" Brass Bead	Finish	Product #	Price
.237" High	Blue	365-707	\$17.99
.256" High	Blue	466-785	\$17.99
.276" High	Blue	525-251	\$19.79
Night Sight	Finish	Product #	Price
.256" High	Blue	448-915	\$48.49
Sourdough-Patridge	Finish	Product #	Price
.256" High	Blue	439-100	\$19.79
.276" High	Blue	960-333	\$17.99
.315" High	Blue	972-632	\$17.99
.355" High	Blue	267-758	\$17.99
.394" High	Blue	131-972	\$17.99

**NECG Ruger Front Ramp Replacement Front Sights**

These steel sights are made to replace factory front sights on Ruger #1 and M77 models. No gunsmithing required.



3/32" White Bead	Finish	Product #	Price
.330" High	Blue	130-737	\$19.99
.350" High	Blue	413-743	\$19.99
.375" High	Blue	113-894	\$19.99
.415" High	Blue	916-634	\$19.99
.435" High	Blue	398-403	\$19.99
3/32" Red Fiber Optic Red Bead	Finish	Product #	Price
.330" High (Pictured)	Blue	531-882	\$29.99
.350" High	Blue	841-409	\$29.99
.375" High	Blue	834-042	\$29.99
.415" High	Blue	862-961	\$29.99
.435" High	Blue	275-182	\$29.99

**NECG Universal Front Ramp Hoods**

These steel sight hoods offer protection for the front sight, as well as an improved sight picture. Features a knurled front end. Fiber optic hood has a window that allows in additional light.



Description	Finish	Product #	Price
.550" Inside Diameter	Blue	477-705	\$17.99
.630" Inside Diameter	Blue	946-223	\$17.99
.630" Inside Diameter for .300" High Ramp	Blue	223-177	\$25.99
.630" Inside Diameter for Fiber Optic Sight	Blue	815-783	\$25.99
.708" Inside Diameter	Blue	992-991	\$17.99



**Remington 700 Rear Sight Assembly**



This is a factory replacement sight for the Remington 700. Adjustable for windage and elevation. Does not include mounting screws.

# 695-571	\$31.99
-----------	---------

**Scattergun Technologies™**

**Scattergun Technologies Ghost Ring Sight Sets**

Sights are CNC machined from bar stock steel and have tritium inserts for use in low-light situations.

Elevation and windage are both adjusted with a single hex-head screw. Fits Remington model 870, 1100, and 11-87. Requires drilling and tapping of the receiver and front sight to install.



20 Gauge	Finish	Product #	Price
Tritium Front and Rear	Parkerized	593-701	\$142.99
Tritium Front, Standard Rear	Parkerized	191-316	\$113.99
12 Gauge	Finish	Product #	Price
Tritium Front and Rear (Pictured)	Parkerized	123-185	\$142.99
Tritium Front, Standard Rear	Parkerized	258-391	\$113.99

**Schuster AR-15 Front Sight Bases**

These Sight Bases easily attach to the barrel and do not require removing existing front sight. Any Redfield target-style front sight can be attached to the dovetail. Features click adjustable thumbwheel for elevation adjustments and locking set screws. Includes wrench and instructions. Aluminum.



Description	Finish	Product #	Price
.725" Barrel Diameter	Bead Blast	117-099	\$115.99
.740" Barrel Diameter	Bead Blast	822-634	\$115.99
.750" Barrel Diameter	Bead Blast	870-998	\$115.99
.812" Barrel Diameter	Bead Blast	417-546	\$115.99

### Schuster AR-15 National Match Rear Sight Aperture Hood Protector



Vinyl tube slips over the extended rear sight aperture to protect lens from being scratched. Black.

# 884-634.....\$1.99

### SPRINGFIELD ARMOY.

### Springfield Armory M1A Match Sight Kit



Designed for the M1A rifle, this kit is complete and ready to install. The all steel rear sight has 1/2 minute windage and elevation sight adjustments and a hooded peep. The kit also includes a replacement front sight. Matte.

# 116-391.....\$154.99



### Taylor's & Company Front Sights



Sights are machined from solid steel and fit a 3/8" dovetail. Sights include a single post insert. Additional aperture inserts are available for use with Globe sight (sold separately).

Sights	Finish	Product #	Price
Globe	Blue	153-867	\$18.99
Tunnel (Pictured)	Blue	182-755	\$9.49
Apertures	Product #	Price	
Set of 10		529-601	\$18.49



### Thompson Center Fiber Optic Sights



These Fiber Optic Sights provide highly visible dots that appear to emit a radiant glow in low light conditions and provide distinct aiming points for more accurate shooting. Rear sight has click adjustments for windage and elevation.

Front Sight	Finish	Product #	Price
Early Black Diamond, System I, ThunderHawk, Woods and FireHawk with 21" Barrel	Matte	710-475	\$19.49
Octagonal and Round Barrels with Dovetail (Not Black Mountain Magnum)	Matte	914-925	\$14.49
Rear Sight	Finish	Product #	Price
Black Diamond, Encore, Omega	Matte	441-702	\$30.99
Muzzleloaders with 15/16" Octagon Barrels (Pictured)	Matte	193-339	\$30.99
Muzzleloaders with 1" Octagon Barrels	Matte	847-617	\$30.99



### Trijicon Rifle Night Sight 3-Dot Sets



Trijicon sights are machined from solid steel and have tritium gas filled lamps for visibility in low-light. Tritium lamps have a bright white outline for daylight visibility. Sights are impervious to solvents and include a 12-year warranty.

Description	Finish	Product #	Price
AR-15 (Pictured)	Matte	428-560	\$72.99
HK Rifle	Matte	335-072	\$84.99



### Trijicon Remington Shotgun Night Sight Ghost Ring Set

3 Dot green Front and green Ghost Ring Rear night sight set for the Remington 870, 1100 and 11-87 that have a bead front sight without ventilated rib. Rear sight installation requires drilling and tapping the receiver. Front sight is glued or soldered on over the original front sight base. Matte.

# 109-166.....\$84.99



### TRUGLO Tru-Point Shotgun Front Sights



Machined metal fiber optic front sight sits close to the rib and features interchangeable green, red, yellow and orange fiber optic inserts.

Description	Finish	Product #	Price
Benelli Super Black Eagle, M1 Super 90 with 5/16" Vent Rib	Matte	338-943	\$30.99
Beretta Field Grade with 6mm Vent Rib	Matte	459-713	\$30.99
Mossberg, Winchester with 3/8" Vent Rib	Matte	544-971	\$30.99
Remington with 1/4" Vent Rib	Matte	645-278	\$30.99
Ruger Red Label	Matte	764-351	\$30.99

### TRUGLO Pro-Series Magnum Gobble Dot Shotgun Sight Sets



These fully adjustable front and rear sights clamp to the vent rib of most popular shotguns and require no tape or magnets. The micro-adjustable rear sight allows for windage and elevation correction. Two dot green rear and red front.

Description	Finish	Product #	Price
Benelli Super Black Eagle, M1 Super 90 with 8mm Vent Rib	Matte	666-597	\$44.99
Beretta Field Grade with 6mm Vent Rib	Matte	832-394	\$44.99
Mossberg, Winchester with 3/8" Vent Rib	Matte	260-256	\$44.99
Remington with 1/4" Vent Rib	Matte	219-733	\$44.99

### TRUGLO Tru-Point Turkey Sight Sets



This innovative system secures both the front and rear sight bases to the vented rib without the need for screws, tape or magnets. The special nylon liner slides over the rib to protect the finish while locking the metal sight base in place. The rear sight features a windage adjustment only. The fiber optic inserts feature a contrasting red front dot and two green rear dots for easy sight alignment.

Description	Finish	Product #	Price
Benelli Super Black Eagle, M1 Super 90 with 5/16" Vent Rib	Matte	716-499	\$30.99
Beretta Field Grade with 6mm Vent Rib	Matte	327-053	\$30.99
Mossberg, Winchester with 3/8" Vent Rib	Matte	182-294	\$30.99
Remington with 1/4" Vent Rib	Matte	250-786	\$30.99

### TRUGLO Firesight Rifle Sights

Fully adjustable for windage and elevation, these steel Firesights feature fiber optic inserts; red in the front and green in the rear. Designed to replace factory sights, no gunsmithing required. AR-15 front sight is green and fits military contour barrels.



Sight Set	Finish	Product #	Price
Browning BLR	Matte	848-015	\$40.99
Marlin 336 Rifle (Except Carbine), Henry Golden Boy 22 Winchester Magnum Rimfire	Matte	813-573	\$25.99
Winchester 94 Rifle (Except Carbine), Henry Golden Boy 22 Long Rifle	Matte	744-104	\$25.99
Ruger 10/22 (Pictured)	Matte	373-947	\$25.99
Front Sight	Finish	Product #	Price
AR-15	Matte	623-327	\$44.99

### Vintage Gun Remington 600 Sight Rib



Molded in black plastic to original specifications.

# 686-147.....\$17.99

**WILD WEST GUNS, INC. Wild West Guns Ghost Ring Rear Sights**



Wild West Ghost Ring Sights are sturdy, all machined steel. Wings protect the aperture from damage. They are fully adjustable for windage and elevation. May require drilling and tapping of receiver.

Description	Finish	Product #	Price
Marlin 1894	Blue	443-296	\$108.99
Marlin 336, 1895, 444	Blue	384-570	\$98.99
Winchester 94 (Pictured)	Blue	570-407	\$126.99



**Williams Target Globe Front Sights**



The Target Globe front sight is adaptable to many different rifles for competition shooting and comes complete with a selection of inserts. Mounts easily to an attaching base with a knurled locking screw. Height of globe is .545" from center, not including the attaching base. Bases available separately.

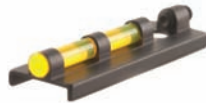
Sight	Finish	Product #	Price
Front Sight with Inserts	Blue	857-325	\$41.99

Base	Finish	Product #	Price
Dovetail .220" High	Blue	818-605	\$16.99
Dovetail .465" High	Blue	573-594	\$16.99
Screw-On Height .215" Radius .400"	Blue	540-365	\$15.99
Screw-On Height .300" Radius .300"	Blue	731-321	\$15.99
Screw-On Height .450" Radius .350"	Blue	518-534	\$15.99

**Williams Shotgun Fire Sights for Ventilated Ribs**

Fire Sights are fiber optic light-gathering sights that present a faster target picture. Lightweight and durable, Fire Sights are made from aircraft aluminum with front beads that are made of steel. Sight clamps to rib of Shotgun. No gunsmithing required.



Description	Finish	Product #	Price
1/4" Wide Ribs	Blue	670-416	\$15.99
5/16" Wide Ribs	Blue	853-100	\$15.99
3/8" Wide Ribs	Blue	111-473	\$15.99

**Williams Rifle Fire Sight Sets**

Williams Fire Sights are fiber optic light gathering sights that offer higher visibility and faster sight picture and target acquisition. Front sight fits into dovetail. Sights are fully adjustable for windage and elevation. Please note that this almost always requires some minor fitting.



Description	Finish	Product #	Price
Browning BLR	Blue	453-693	\$33.99
Browning BPS Shotgun	Blue	117-203	\$33.99
CVA Octagon Barrel	Blue	278-970	\$33.99
CVA Round Barrel	Blue	460-077	\$33.99
CVA Optima and Optima Pro	Blue	717-445	\$32.99
Dovetail Marlin 25N and 25MN with Front Ramp, Rear Dovetail	Blue	861-434	\$24.99
Knight	Blue	547-786	\$44.99
Lightning Fire, Buckhunter, Timberridge and Cabela's Private Label	Blue	105-507	\$33.99
Marlin and Winchester w/Front Ramp, Rear Dovetail (Pictured)	Blue	354-276	\$29.99
Remington Muzzleloader, Pre 2003 Rifles and All Shotguns	Blue	341-370	\$25.99
Remington Muzzleloader, Post 2003 Rifles and All Shotguns	Blue	460-480	\$25.49
Ruger 10/22	Blue	715-234	\$23.99
Savage ML 2, Winchester X150	Blue	119-767	\$38.99
T/C New Englander	Blue	137-846	\$33.99
T/C Octagon Barrel	Blue	273-226	\$33.99

**Williams Front Sight Beads**

Williams Front Sights come with the industry standard 3/8" dovetail. Installation of dovetail sights in ramps and especially in dovetailed barrels almost always requires some minor fitting.



1/16" Bead	Finish	Height	Width	Product #	Price
Gold	Blue	.0250"	.0250"	851-803	\$10.29
Gold	Blue	.0290"	.0250"	617-525	\$10.29
Gold	Blue	.0312"	.0250"	870-274	\$10.29
Gold	Blue	.0343"	.0250"	981-869	\$10.29
Gold	Blue	.0375"	.0250"	143-733	\$10.29
Gold	Blue	.0406"	.0250"	242-142	\$10.29
Gold	Blue	.0450"	.0250"	374-799	\$10.29

Gold	Blue	.0250"	.0340"	263-776	\$10.29
Gold	Blue	.0290"	.0340"	377-057	\$10.49
Gold	Blue	.0312"	.0340"	161-794	\$10.29
Gold	Blue	.0343"	.0340"	391-004	\$10.29
Gold	Blue	.0375"	.0340"	319-797	\$10.29
Gold	Blue	.0406"	.0340"	946-488	\$10.29
Gold	Blue	.0450"	.0340"	973-391	\$10.29
Gold	Blue	.0538"	.0340"	127-653	\$9.69
Gold	Blue	.0570"	.0340"	985-970	\$9.69
Gold	Blue	.0343"	.0531"	864-560	\$9.69
Gold	Blue	.0375"	.0531"	914-086	\$9.69
Gold	Blue	.0410"	.0531"	814-857	\$9.69
Gold	Blue	.0450"	.0531"	947-968	\$9.69
Gold	Blue	.0500"	.0531"	170-410	\$9.69
Gold	Blue	.0538"	.0531"	738-904	\$9.69
Gold	Blue	.0570"	.0531"	619-130	\$9.69

3/32" Bead	Finish	Height	Width	Product #	Price
Gold	Blue	.0250"	.0250"	461-539	\$10.29
Gold	Blue	.0290"	.0250"	134-143	\$10.29
Gold	Blue	.0312"	.0250"	857-673	\$10.29
Gold	Blue	.0343"	.0250"	596-788	\$10.29
Gold	Blue	.0375"	.0250"	288-028	\$10.29
Gold	Blue	.0406"	.0250"	796-527	\$10.29
Gold	Blue	.0450"	.0250"	651-500	\$10.29

Fiber Optic Red	Blue	.0250"	.0250"	292-636	\$15.99
Fiber Optic Red	Blue	.0290"	.0250"	339-714	\$15.99
Fiber Optic Red	Blue	.0312"	.0250"	613-687	\$15.99
Fiber Optic Red	Blue	.0343"	.0250"	698-783	\$15.99
Fiber Optic Red	Blue	.0375"	.0250"	685-600	\$15.99
Fiber Optic Red	Blue	.0406"	.0250"	515-464	\$15.99
Fiber Optic Red	Blue	.0450"	.0250"	285-564	\$15.99

Gold	Blue	.0250"	.0340"	472-243	\$10.29
Gold	Blue	.0290"	.0340"	159-198	\$10.29
Gold	Blue	.0312"	.0340"	358-804	\$10.49
Gold	Blue	.0343"	.0340"	145-976	\$10.29
Gold	Blue	.0375"	.0340"	334-345	\$10.29
Gold	Blue	.0406"	.0340"	391-507	\$10.29
Gold	Blue	.0450"	.0340"	480-162	\$10.29
Gold	Blue	.0538"	.0340"	814-346	\$9.69
Gold	Blue	.0570"	.0340"	472-823	\$9.69

Fiber Optic Red	Blue	.0250"	.0340"	126-634	\$15.99
Fiber Optic Red	Blue	.0290"	.0340"	686-722	\$15.99
Fiber Optic Red	Blue	.0312"	.0340"	865-025	\$15.99
Fiber Optic Red	Blue	.0343"	.0340"	348-100	\$15.99
Fiber Optic Red	Blue	.0375"	.0340"	736-467	\$15.99
Fiber Optic Red	Blue	.0406"	.0340"	859-199	\$15.99
Fiber Optic Red	Blue	.0450"	.0340"	276-026	\$15.99
Fiber Optic Red	Blue	.0538"	.0340"	158-350	\$15.99
Fiber Optic Red	Blue	.0570"	.0340"	334-777	\$15.99

Fiber Optic Red	Blue	.0375"	.0531"	116-846	\$15.99
Fiber Optic Red	Blue	.0410"	.0531"	643-177	\$15.99
Fiber Optic Red	Blue	.0450"	.0531"	187-153	\$15.99
Fiber Optic Red	Blue	.0500"	.0531"	260-228	\$15.99
Fiber Optic Red	Blue	.0538"	.0531"	931-377	\$15.99
Fiber Optic Red	Blue	.0570"	.0531"	517-699	\$15.99

**Answer: Remington 700**  
Even though John Browning held 128 patents and designed a number of firearms for Remington, Winchester, Fabrique Nationale, the US military and others, he did not design the Remington 700. It was developed by Mike Walker.

For a complete line of Remington 700 gun parts, see pages 552-562.



### Williams WGOS Guide Open Sight Bases



These bases are milled from high tensile strength aluminum alloy and include 6 x 48 mounting screws. They feature dovetailed elevation and windage adjustments. Designed to be adaptable to a variety of firearms and may require drilling and tapping rifle. Requires the use of a Williams Rear Sight Blade (sold separately).

Description	Finish	Product #	Price
Small	Matte	735-321	\$16.29
<i>Hole Spacing: .5625". Fits: .660"-.730" Barrel Dia.</i>			
Medium	Matte	154-976	\$16.29
<i>Hole Spacing: .5625". Fits: .730"-830 Barrel Dia.</i>			
Large	Matte	243-145	\$16.29
<i>Hole Spacing: .5625". Fits: .830"-.930" Barrel Dia.</i>			
Extra-Large	Matte	453-735	\$16.29
<i>Hole Spacing: .5625". Fits: .900"-1.00" Barrel Dia.</i>			
26mm	Matte	918-784	\$16.29
<i>Hole Spacing: .5625". Fits: 1.00"-1.10" Barrel Dia.</i>			
Flat	Matte	863-387	\$16.29
<i>Hole Spacing: .5625". Fits: Large Octagon Barrels</i>			
Octagon-CVA	Matte	390-571	\$16.29
<i>Fits: 15/16" and 1" Octagon barrels with dovetail cut for rear sight and attaches to dovetail lock.</i>			
Octagon-T/C	Matte	125-685	\$16.29
<i>Hole Spacing: .835". Fits: 15/16" and 1" Octagon Barrels</i>			
1"	Matte	210-826	\$16.29
<i>Hole Spacing: 1.00", Fits: 1.00" Barrel Dia.</i>			
Round-T/C	Matte	698-214	\$16.29
<i>Hole Spacing: .835". Fits: 1.025" Barrel Dia.</i>			
Special	Matte	928-877	\$16.29
<i>Hole Spacing: .5625". Fits: .730"-830" Barrel Dia.</i>			

### Williams WDOS Dovetail Open Sight Base



Base fits 3/8" dovetail. Rear sight blade sold separately.

# 211-355	\$9.99
-----------	--------

### Williams Screw-On Dovetail Sight Base



Base has 9/16" hole spacing to fit the factory spacing of Remington 760, 740, 725. Accepts 3/8" dovetail blades (sold separately). Includes 6 x 48 mounting screws.

# 578-447	\$18.99
-----------	---------

### Williams Rear Sight Blades

Williams Rear Sight Blades fit Williams Guide Open Sight and Dovetail Open Sight bases. Aluminum.



U Notch	Finish	Product #	Price
3/16" High	Matte	475-030	\$6.89
1/4" High	Matte	574-999	\$6.89
5/16" High	Matte	187-030	\$6.89
3/8" High (Pictured)	Matte	609-091	\$6.89
Square Notch	Finish	Product #	Price
3/16" High	Matte	132-349	\$6.89
1/4" High	Matte	950-591	\$6.89
5/16" High	Matte	448-632	\$6.89
3/8" High	Matte	379-893	\$6.89

### Williams Fire Sight Ramp Hood

Designed for the Williams Streamline Ramps utilizing a fiber optic front bead. Steel construction with a cut out on top to allow light in. Blue.



# 372-740	\$9.89
-----------	--------

### Williams Muzzleloader Rifle Front Ramp Fire Sights



Front sight features a high visibility fiber optic Fire Sight blade integrated into the ramp which makes it less susceptible to damage. Fits dovetail slot. Made of steel and aluminum. Height listed includes dovetail.

Octagon	Finish	Product #	Price
.450" High, .531" Width	Blue	650-370	\$15.99
.500" High, .531" Width	Blue	582-500	\$15.99
.550" High, .531" Width	Blue	289-091	\$15.99
Round	Finish	Product #	Price
.450" High, .531" Width	Blue	672-256	\$15.99
.500" High, .531" Width	Blue	289-542	\$15.99
.550" High, .531" Width	Blue	658-828	\$15.99

### Williams Shorty Ramps

These are shortened versions of the popular streamlined ramp. Easily installed, these ramps can be screwed on, sweated on, or installed with an optional 3/8" dovetail lock. Centerfire Rifle Ramp is adaptable to most barrel diameters, and Shotgun Ramps are offered in 2 of the most popular 12 Gauge barrel diameters. Gunsmith installation is recommended.



Centerfire Rifle	Finish	Product #	Price
1/8" High	Blue	796-367	\$17.29
3/16" High	Blue	676-845	\$17.29
9/32" High	Blue	619-652	\$17.29
3/8" High	Blue	146-357	\$17.29
Shotgun with .815" Barrel Diameter	Finish	Product #	Price
1/8" High	Blue	156-471	\$17.99
3/16" High	Blue	118-027	\$17.99
9/32" High	Blue	313-376	\$17.99
3/8" High	Blue	570-364	\$17.99
Shotgun with .875" Barrel Diameter	Finish	Product #	Price
1/8" High	Blue	687-196	\$17.99
3/16" High	Blue	381-267	\$17.99
9/32" High	Blue	111-700	\$17.99
3/8" High	Blue	958-242	\$17.99
Accessory	Finish	Product #	Price
Dovetail Lock	Blue	369-479	\$4.49

### Williams Front Sight Riser Blocks

These risers add .250" to the height of the dovetail. Available in 2 widths: .250" for Williams Streamlined ramps and .340" on all standard ramps.



Description	Finish	Product #	Price
.250" Wide	Matte	497-701	\$6.89
.340" Wide	Matte	682-122	\$6.89

### Williams Universal Vent Rib "Slugger" Shotgun Fire Sight Set

Fire Sights are fiber optic light-gathering sights that present a faster sight and target picture. Lightweight and durable, Fire Sights are made from aircraft strength aluminum with front beads that are made of steel. These front and rear metallic sights attach to virtually all width vent ribs. Rear sight is fully adjustable for windage and elevation. Fits all vent ribs from 1/4" to 3/8" wide. No gunsmithing required.



# 671-251	\$29.99
-----------	---------



### Williams Streamlined Ramps

These attractive, steel ramps have a 3/8" dovetail. Screw on ramps have 6 x 48 thread. Hood sold separately.

Screw-On.....	Finish .....	Product # .....	Price .....
3/16" High.....	Blue .....	407-183 .....	\$22.49
5/16" High.....	Blue .....	509-480 .....	\$22.49
3/8" High.....	Blue .....	126-727 .....	\$22.49
7/16" High.....	Blue .....	182-962 .....	\$22.49
Screw-On (Remington .605" Hole Spacing) .....	Finish .....	Product # .....	Price .....
5/16" High.....	Blue .....	128-082 .....	\$22.49
3/8" High.....	Blue .....	830-066 .....	\$22.49
7/16" High.....	Blue .....	375-990 .....	\$22.49
9/16" High.....	Blue .....	992-169 .....	\$22.49
7/16" High.....	Blue .....	796-896 .....	\$22.49
Sweat-On.....	Finish .....	Product # .....	Price .....
5/16" High.....	Blue .....	644-959 .....	\$22.49
3/8" High.....	Blue .....	327-528 .....	\$22.49
7/16" High.....	Blue .....	368-567 .....	\$22.49
Accessory.....	Product # .....	Price .....	
Ramp Hood.....	156-338.....	\$5.29	

### Williams SKS Aperture Sight



Replaces the original military sight with a peep. Easy installation, no drilling or tapping required. Front Fire Sight sold separately. No gunsmithing required.

Description.....	Finish .....	Product # .....	Price .....
Aperture Rear Sight (Pictured).....	Matte.....	458-953 .....	\$24.99
Front Fire Sight.....	Blue.....	512-932 .....	\$16.99



### Wilson Combat AR-15 Detachable Flip-Up Rear Sight



Flip-up Sight is designed for flattop AR-15s and features windage and elevation adjustment and a large aperture peep sight. Mounts to any Weaver-style or Picatinny rail. Matte.

# 244-103.....\$129.99

**MidwayUSA carries an extensive line of Remington and Winchester Factory Sights and Components. See our website or call for more information.**

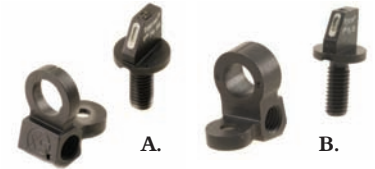
• Don't Forget these Customer Favorites •



### MidwayUSA Ultimate 10 Earmuffs

30 dB Blue  
# 214-443 \$19.99  
For our complete line of Hearing Protection, see pages 266-273.

### XS 24/7 Tritium Tactical Sight Sets



XS 24/7 Tactical Sights feature green Tritium inserts for improved sight picture in all light conditions and faster sight acquisition. M1A set features a single rear aperture, AR-15 sets feature dual apertures. Fitting may be required.

AR-15 Sets.....	Finish .....	Product # .....	Price .....
Tritium Stripe Front, Ghost Ring Rear (A).....	Matte.....	575-425 .....	\$84.99
Tritium Dot Front, Ghost Ring Rear.....	Matte.....	824-741 .....	\$84.99
Tritium Stripe Front, Tritium Ghost Ring Rear (B).....	Matte.....	119-877 .....	\$109.99
AR-15 Front Sight Post.....	Finish .....	Product # .....	Price .....
Tritium Post.....	Matte.....	161-116 .....	\$49.99
AK-47, AKM Front Sight Posts.....	Finish .....	Product # .....	Price .....
Tritium Post.....	Matte.....	118-137 .....	\$59.99
M1A Set.....	Finish .....	Product # .....	Price .....
Tritium Stripe Front .125" Ghost Ring Rear.....	Matte.....	596-307 .....	\$109.99

### XS Remington Tactical Shotgun Sight Sets



Ghost-Ring Shotgun Sights provide increased accuracy at extended ranges and fast sight acquisition up close. Feature windage and elevation adjustable rear sight with wings for protection in rough environments. Require drilling and tapping. Fits Remington 870, 1100 and 11-87..

Winged Ghost Ring Rear Sight with.....	Finish .....	Product # .....	Price .....
Tritium Banded Standard Dot Front.....	Matte.....	682-323 .....	\$149.99
Tritium Post Front (Pictured).....	Matte.....	495-480 .....	\$139.99
White Post Front .....	Matte.....	199-821 .....	\$109.99

### XS Cowboy Express Sights

Sights fit standard 3/8" dovetails and are for use as replacement sights for Winchester and Marlin centerfire lever action rifles.



Description .....	Product # .....	Price .....
Sight Set (Pictured).....	815-021 .....	\$79.99
.400" High White Bead, V-Notch Rear		
Front Sight Only.....	619-367 .....	\$24.99
.500" High White Bead		

### XS Ghost-Ring Hunting Sight Set



XS Ghost-Ring Hunting Sights improve accuracy and offer fast sight acquisition. Sights are easily installed, in most cases matching existing screw holes. Features .100" white post front sight and a ghost-ring rear sight that provides 14" of windage and 16" of elevation adjustment at 100 yards. Set includes a large .230" aperture.

Description.....	Finish .....	Product # .....	Price .....
Marlin 336, 30AS and 1894 (Pictured).....	Matte.....	920-514 .....	\$79.99
Integral Ramp Fits Newer .70" Hole Space Front Base			
Marlin 444P and 1895.....	Matte.....	363-936 .....	\$79.99
Integral Ramp Fits .70" and 1.0" Hole Spacing Front Base			
Ruger 10/22.....	Matte.....	143-961 .....	\$79.99
Winchester 94 Angle-Eject.....	Matte.....	362-051 .....	\$79.99
with Front Ramp			
Winchester 94 Trapper Angle-Eject.....	Matte.....	494-336 .....	\$79.99
with Post Dovetailed in Barrel			



**Galazan Ivory Front and Rear Shotgun Beads**

Handmade ivory sights for high-grade shotguns. Feature tapered drive-in metal bases. Front sight approximate diameter .135", rear sight approximate diameter .080".  
# 648-273 .....\$29.99



**NECG Shotgun Bead**

These genuine Ivory beads will look great on any shotgun. 6 x 48 threads in two sizes.  
**Description.....Threads.....Product #.....Price**  
.157" Dia Bead .....295-691 .....\$10.49  
.197" Dia Bead .....298-426 .....\$10.49



**Lyman**

**Lyman Shotgun Beads**



Lyman shotgun sights are equipped with oversized ivory-like beads, which are easy to see under any light conditions and can be fitted in minutes. Number 10 sights (press fit) are for use on double barrels. Screw fit are for non-ribbed, single barrel guns. Gunsmith installation required.

Description.....	Threads.....	Product #.....	Price
Front Sight #10 Bead Press Fit (Pictured).....	N/A.....	759-613.....	\$5.79
Front Sight #10D Bead Screw Fit.....	.6 x 48.....	764-116.....	\$5.79
Middle Sight #11 Bead Press Fit.....	N/A.....	764-305.....	\$5.79



**Marble's Shotgun Beads**



Fiber Optic beads offer vibrant glowing dots that stand out in all light conditions. Bright enough to see clearly but with classic lines that will not alter the traditional look of your shotgun. Extra-Lum Shotgun Beads have 500 percent more light gathering ability than the Standard Beads. All the Beads can be rib mounted or directly mounted on plain barrel shotguns. Precision machined from solid steel.

Description .....	Pattern .....	3/32" Dia.		5/16"		Price
		Dia Bead	Product #..	Dia. Bead	Product #..	
Extra-Lum Fiber Optic Green (A).....	3 x 56 and m2.5 x .45.....	.926-043.....	\$10.49	931-091.....	\$10.49	
Extra-Lum Fiber Optic Green.....	5 x 40.....	954-236.....	\$10.49	N/A.....	N/A	
Extra-Lum Fiber Optic Green.....	6 x 48.....	931-404.....	\$10.49	933-378.....	\$10.49	
Extra-Lum Fiber Optic Green.....	.6 x 48 Oversize.....	934-503.....	\$10.49	952-082.....	\$10.49	
Extra-Lum Fiber Optic Green.....	m3.0 x .5.....	959-172.....	\$10.49	N/A.....	N/A	
Extra-Lum Fiber Optic Orange (B).....	3 x 56 (m2.5 x .45).....	961-087.....	\$10.49	971-083.....	\$10.49	
Extra-Lum Fiber Optic Orange.....	5 x 40.....	992-229.....	\$10.49	N/A.....	N/A	
Extra-Lum Fiber Optic Orange.....	6 x 48.....	974-395.....	\$10.49	976-662.....	\$10.49	
Extra-Lum Fiber Optic Orange.....	.6 x 48 Oversize.....	988-348.....	\$10.49	989-608.....	\$10.49	
Extra-Lum Fiber Optic Orange.....	m3.0 x .5.....	995-611.....	\$10.49	N/A.....	N/A	
Fiber Optic Green.....	3 x 56 (m2.5 x .45).....	862-533.....	\$6.79	867-235.....	\$6.79	
Fiber Optic Green.....	5 x 40.....	893-599.....	\$6.79	N/A.....	N/A	
Fiber Optic Green.....	6 x 48.....	867-479.....	\$6.79	879-428.....	\$6.79	
Fiber Optic Green.....	6 x 48 Oversize.....	888-213.....	\$6.79	888-628.....	\$6.79	
Fiber Optic Green.....	m3.0 x .5.....	894-452.....	\$7.99	N/A.....	N/A	
Fiber Optic Orange.....	3 x 56 (m2.5 x .45).....	895-234.....	\$6.79	910-107.....	\$6.79	
Fiber Optic Orange.....	5 x 40.....	918-767.....	\$6.79	N/A.....	N/A	
Fiber Optic Orange.....	6 x 48.....	910-286.....	\$6.79	911-908.....	\$6.79	
Fiber Optic Orange.....	6 x 48 Oversize.....	913-224.....	\$6.79	913-423.....	\$6.79	
Fiber Optic Orange.....	m3.0 x .5.....	925-760.....	\$7.99	N/A.....	N/A	
Gold (C).....	3 x 56 (m2.5 x .45).....	814-600.....	\$5.89	816-907.....	\$5.89	
Gold.....	5 x 40.....	822-002.....	\$5.89	N/A.....	N/A	
Gold.....	6 x 48.....	817-611.....	\$5.89	817-976.....	\$5.89	
Gold.....	6 x 48 Oversize.....	819-434.....	\$5.89	819-915.....	\$5.89	
Gold.....	m3.0 x .5.....	824-085.....	\$5.89	N/A.....	N/A	
Ivory (D).....	3 x 56 (m2.5 x .45).....	832-472.....	\$5.89	836-336.....	\$6.59	
Ivory.....	5 x 40.....	851-584.....	\$5.89	N/A.....	N/A	
Ivory.....	6 x 48.....	843-417.....	\$5.89	846-816.....	\$5.89	
Ivory.....	6 x 48 Oversize.....	848-833.....	\$5.89	850-989.....	\$5.89	
Ivory.....	m3.0 x .5.....	853-444.....	\$5.89	N/A.....	N/A	

**Marble's Mid-Rib Shotgun Beads**

Marble's Mid-Rib Shotgun Beads aid in consistent eye and front sight bead alignment. These are compatible with virtually all front sight beads from traditional metal to fiber optic. Beads are 1/16" in diameter.



Description.....	Threads.....	Product #.....	Price
Gold Threaded Bead (Pictured).....	3 x 56.....	183-230.....	\$3.29
Ivory Stake-On Bead.....	N/A.....	182-117.....	\$4.79



**Williams Shotgun Beads**

Gold and Silver replacement shotgun beads in the most popular diameters and thread sizes. The shank length of the .067" diameter bead, normally used for the middle bead, is 3/32", all others are 1/8".



Description.....	Threads.....	Color .....	Product #.....	Price
.067" Diameter Bead.....	3 x 56.....	Silver.....	219-956.....	\$3.59
.067" Diameter Bead.....	3 x 56.....	Gold.....	460-680.....	\$3.59
.130" Diameter Bead.....	3 x 56.....	Silver.....	323-994.....	\$3.59
.130" Diameter Bead.....	3 x 56.....	Gold.....	569-523.....	\$3.59
.175" Diameter Bead.....	3 x 56.....	Silver.....	926-516.....	\$3.59
.175" Diameter Bead.....	3 x 56.....	Gold.....	711-936.....	\$3.59
.175" Diameter Bead.....	6 x 48.....	Silver.....	978-178.....	\$3.59
.175" Diameter Bead.....	6 x 48.....	Gold.....	917-464.....	\$3.59

**Check out these great features on [midwayusa.com](http://midwayusa.com)**

- Add to Cart from Catalogs**  
With this feature, you can shop directly from one of our printed catalogs or flyers. Simply enter a product number and click "Add to Cart."
- Suggested Products & HOT Deals**  
In this area, we frequently suggest accessories for the products you add to your cart. At other times, we show you our absolute HOTTEST deals here!
- Product Number, Description & Status**  
The product number, description and status of each product you add to your cart are displayed line by line. Since MidwayUSA.com is driven by up to the minute data, you'll always know whether each product is in stock.
- Quantity, Price, Move & Delete**  
It's easy to manage your cart as you shop. Here you can change product quantities, keep track of how much you're spending on each, move products to your Wish List for later or delete them from your cart completely.
- Shipping Estimate**  
With online shipping estimates, there's no need to pick up the phone anymore. Simply enter your ZIP code and we'll show you all the options.
- Subtotal & Checkout Now**  
There are no hidden fees! Everything is listed right here. When you're done shopping, start the checkout process by clicking "Checkout Now."

**B & J Machine PI Glock Front Sight Combination Tool**

Tool is made from steel and has a hollow pin punch on one end and a hex driver on the other.



# 724-147 .....\$18.99

**B & J Machine PI Model 500 Universal Sight Tool**

This tool is designed to remove, install and adjust front and rear dovetail sights for semi-auto handguns. This tool can be used by hand, or it can be used in a bench vise for sights that are extra tight. Tool comes with 2 sight tips: 1/4" Round and 1/4" Square. Steel and polymer construction.



# 163-458 .....\$122.99



**Badger Ordnance AR-15 A2 Rear Sight Installation Tool**



A great tool that simplifies installation of adjustable A2 rear sights.

# 405-723 .....\$23.99

**B-SQUARE**

**B-Square Front Sight Pusher for Dovetail Sights**



This tool easily adjusts front sights without hammering or damage.

# 754-137 .....\$43.49

**B-Square AK, SKS Sight Pusher and Elevation Wrench Combo Pack**



This combination kit is designed to allow adjustment to windage and elevation on the SKS/AK rifle front sights.

# 623-495 .....\$16.29



**Ed Brown Glock Sight Installation Tool**



Easily install or remove Glock front sights that use the hex head retaining screw. 1/4" hex shank fits Pachmayr and other removable blade screwdriver handles. Will not work on Glock 6" long slides.

# 586-658 .....\$12.99

**See page 672 for more Glock Sight Installation Tools.**

**John Masen AK-47, SKS Adjustable Sight Tool**

Tool allows the front sight to be adjusted for windage and elevation. Solid machined steel construction for years of dependable service. For use with SKS and AK-47 rifles.



# 368-914 .....\$8.39



**Millett Dual-Crimp Stake-On Sight Installation Complete Tool Set**



Necessary for the correct installation of Millett Dual-Crimp and Stake-On style front sights. Kit includes application tool (modified vice-grips), drill jig, 3/16" cobalt drill, 3/16" carbide drill, carbide reverse counter-sink, slide bushings, file guide and plastic box. Complete instructions included.

# 269-426 .....\$169.99



**Smith & Wesson Revolver Rear Sight Installation Tool**

This handy tool is used to install S&W factory rear sight blade kits. Includes a punch to stake the windage nut to the windage screw and a specially ground 1/4" screwdriver bit to remove and install the windage nut.



# 630-412 .....\$22.99

**Strobel 1911 Front Sight Installation and Removal Tool**

Tool removes and installs both large and small tenon 1911 front sights. It easily pushes the sight in or out of sight slot, so it is not necessary to use a hammer. Includes instructions.



# 172-968 .....\$69.99



**Wheeler Engineering Front Sight Installation Tool**



This tool is designed for installing any ramp-type front sight. It should not be used to push dovetail sights that are integral to the barrel. Ramp-type front sights can be adjusted or completely removed with ease and without fear of a slipped punch or errant hammer strike marring the sight or barrel. The screw action of the pusher allows precise windage adjustment of the sight by providing constant, even force. The thread block is constructed of aluminum for reduced weight with a steel pusher and handle for a lifetime of sturdiness.

# 375-336 .....\$41.99



**Williams Front Sight Pusher**

This tool is designed to easily install or remove front sight blades from front sight ramps. The Williams Front Sight Pusher equalizes the pressure on the ramp and front sight permitting installation or removal without damage to the sight or mounting area. Made of blue-black anodized alloy, this pusher is the easy, no-mar way to move the front sight blade without fear of damaging the sight.



# 732-798 .....\$59.99