

Find your perfect kitchen

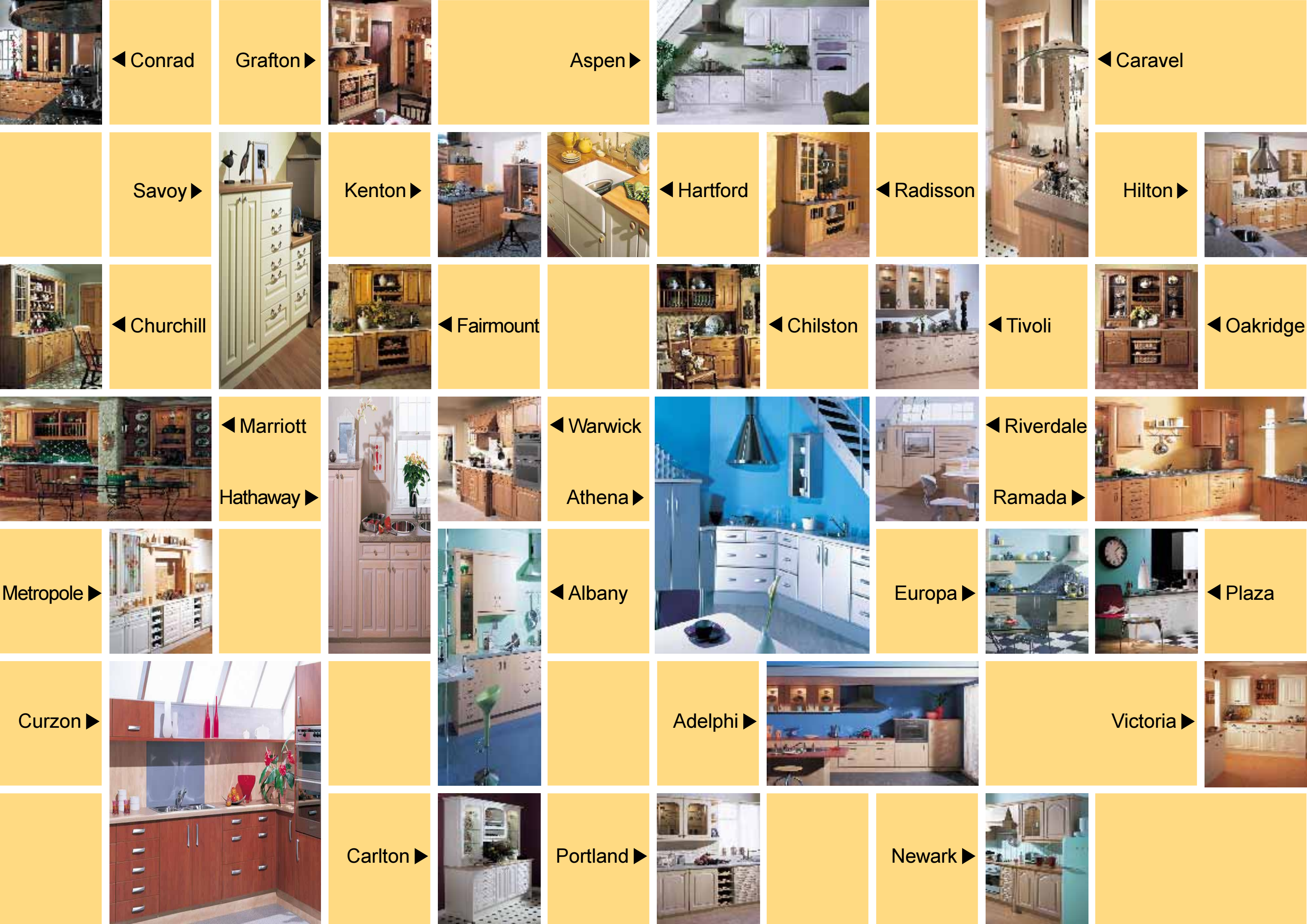


**The perfect kitchen** is more than just cabinets, worktops and appliances, it's a room that reflects your personality and lifestyle - a living room, in fact. For some, it's a place to spend hours preparing food for friends and family, or just to enjoy the sheer pleasure of cooking. For others, it's purely functional; a source of instant coffee and a bite to eat between the times they need to be somewhere else. It's the setting for so many of those intimate, personal moments that make up our lives: Contemplation; Conversation; Deliberation; The occasional kitchen-sink drama; And, of course, it's where all the best parties end up. It's a lot to ask of a room and no-one understands these unique demands better than Crown. Choose your perfect kitchen from the Crown Imperial brochure.

*World Class Furniture*







◀ Conrad

Grafton ▶

Aspen ▶

◀ Caravel

Savoy ▶

Kenton ▶

◀ Hartford

◀ Radisson

Hilton ▶

◀ Churchill

◀ Fairmount

◀ Chilston

◀ Tivoli

◀ Oakridge

◀ Marriott

◀ Warwick

◀ Riverdale

Hathaway ▶

Athena ▶

Ramada ▶

Metropole ▶

◀ Albany

Europa ▶

◀ Plaza

Curzon ▶

Adelpi ▶

Victoria ▶

Carlton ▶

Portland ▶

Newark ▶





## Conrad

This contemporary light beech effect door looks stunning. Shown here with Crown's popular co-ordinated beech matchline™ interior.







## Grafton

Grafton's maple wood doors are plain and simple in the Shaker tradition. Here, Tuscan handles have been chosen as a luxurious accessory.



Solid Maple frame, veneered centre panels





## Aspen

The woodgrain embossed gloss finish, elegant panel shape and brass finish knobs give this Aspen kitchen a classical beauty.



## Caravel

The softly sculptured profile and raised centre panels of Crown Imperial's Caravel create a peaceful kitchen environment. Carefully chosen handles enhance this door's luxurious touch.







## Savoy

The generous proportions of Savoy with its rich mouldings, fresh primrose finish and antiqued handles make it a versatile choice, bringing a relaxed style to town or country kitchens.





Solid Beech frame, veneered centre panel

## Kenton

The beauty of this beech Shaker style kitchen lies in its simplicity. Glass fronted cabinets are available in a variety of sizes, enhancing a stunning kitchen.







# Hartford

Inspired by the early design principles of the Shakers, Hartford is a simple door. The oyster finish of Hartford is set off here with beech door knobs from Crown's accessory range.



Hartford is supplied as standard with the handle shown above







## Radisson

Made from solid wood with veneered panels, these doors are enhanced perfectly by heavy Tuscan style handles. The intricate lattice and spindle doors are a unique feature of this Radisson kitchen.





## Hilton

Hilton is a solid maple door. The warm feel of the smooth maple timber is contrasted with a distressed steel finish for the handle.











## Churchill

Those that love pine will love Churchill. Its broad panel and detailed moulding have a wax finish lovingly applied by hand to create a door at home in the finest of country kitchens. Traditional craftsmanship is always in fashion.







## Fairmount

Crafted in solid pine, Fairmount has an elegant Roman arch with a light antique finish to enhance the natural grain of the wood.

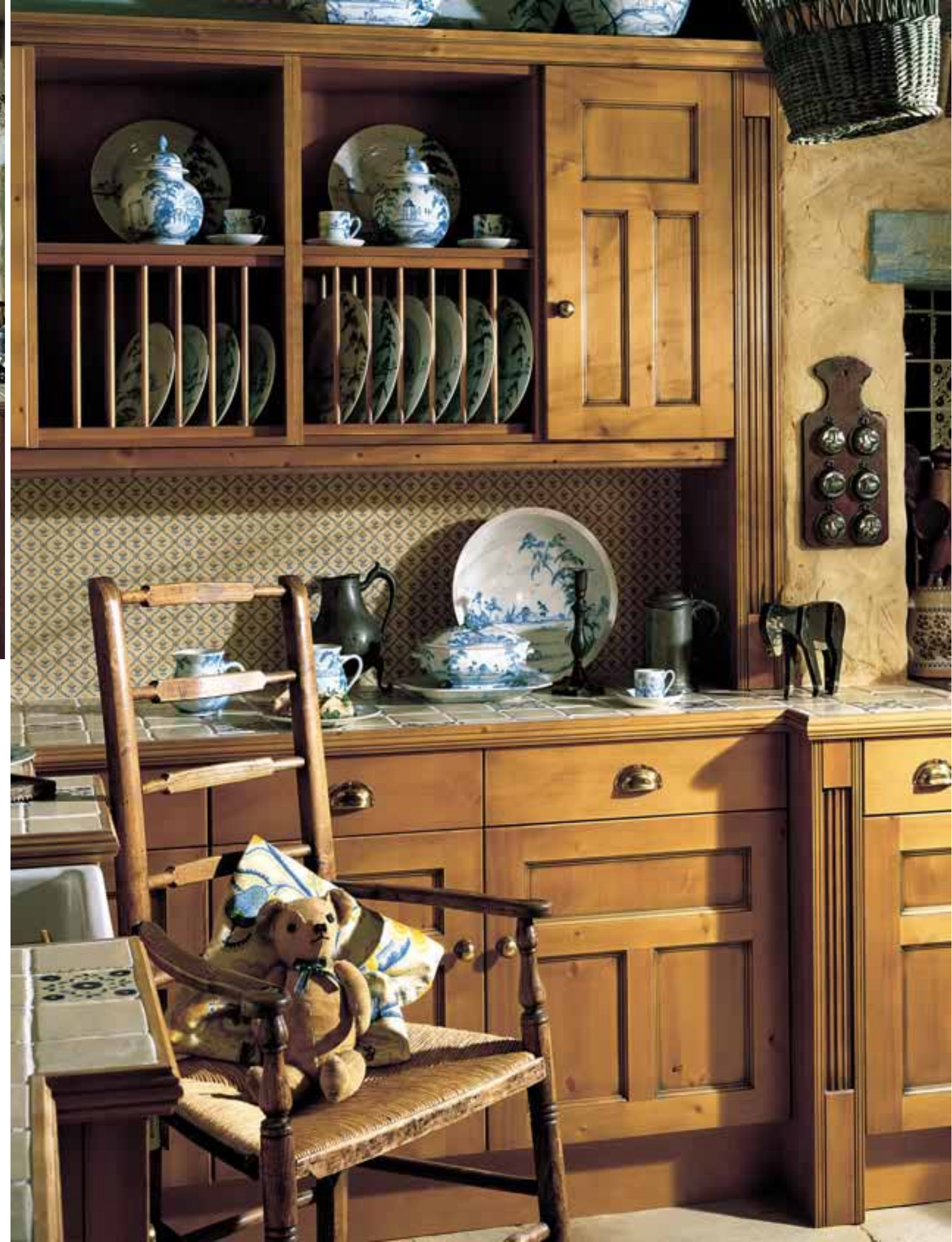






## Chilston

Chilston is a historically inspired kitchen, with authentic panelled doors made from pine, a genuine wax finish and stylish cup handles. Beautiful coordinating pine accessories make this Crown Imperial kitchen a refined choice for anyone.







## Tivoli

Tivoli features a washed maple effect. Its light tones will combine with any colour scheme for a contemporary look.







Solid Oak frame, veneered centre panels

## Oakridge

This charming kitchen brings traditional craftsmanship and character to any home. The golden patina of Oakridge is an economical option for those who appreciate the beauty of oak.







## Marriott

The authentic chestnut pegged and panelled doors of Marriott can be combined with a variety of charming features to create a magnificent kitchen.





## Hathaway

Hathaway is an oak kitchen which recreates the ancient effect of liming. A striking kitchen for today's lifestyle.







Solid Oak frame, veneered centre panels

## Warwick

Warwick is a traditional clear oak kitchen with a silky lacquer applied to enhance and preserve the natural beauty of the wood.







## Athena

New technologies have created a metallic effect that is eye catching and practical. A unique handle gives Athena an individual appeal and up-to-the-minute look.







## Riverdale

Riverdale is a fresh, stylish kitchen. The maple effect foil finished doors have subtle chamfered edges while the anodised aluminium handles provide a striking contrast.







## Ramada

Ramada's bevelled edge doors have red alder effect finish, which has all the style and sophistication of a thoroughly modern kitchen.







## Metropole

Add a touch of elegance to your home with Metropole. The classic square panel design has a white woodgrain foil finish and glistening brass effect door knobs.





## Albany

The subtle pearwood effect of Albany contrasts with its steel pull handles for a modern look.







## Europa

The striking exterior of this maple effect kitchen is brought alive with the addition of stainless steel doors and 'T' Bar handles from Crown's accessory range.



Europa is supplied as standard with the handle shown above.







## Plaza

Plaza is the timeless choice. It has striking white woodgrain effect doors and simple chrome 'D' handles.





## Curzon

The mellow pear effect finish and simple design of Curzon are complemented by a fine anodised handle creating a highly fashionable finish.







## Adelphi

The warm tones of Adelphi create a distinctive kitchen; modern matt nickel handles complement the golden pear effect finish.





## Victoria

The beautifully crafted doors have an attractive arch design with raised and grooved centre panels. The period detail of antiqued bronzed door knobs and cup handles completes the authentic look.







## Carlton

Carlton brings chic style and design to the kitchen. The gloss woodgrain finish, elegant curved door profile and brass effect knobs are luxurious to the touch.





## Portland

Portland has an attractive arch design in a maple foil finish. Glass dresser doors with brass effect leading add a touch of elegance to this kitchen.



Portland is supplied as standard with the handle shown above.





## Newark

Elegant pear foil finish doors have attractive curved mouldings and brass effect knobs. Combined with a bright colour scheme, Newark creates a cheerful interior.

