

*World Class Furniture*



## BRITISH MANUFACTURING AT ITS BEST

Crown's year of experience have enabled them to blend the finest hand craftsmanship with the very latest state-of-the-art equipment. The result is a range of furniture which combines superior quality and style with exceptional value.





## CONTENTS

ELBA

CHANTILLY

VALBONNE

MERION

LINDRICK

POLLENSA

VERONA

AVESTA

MUIRFIELD

PALMERES

PANAREA

HAMILTON

LUCERNE

TREVISO

LOCANO

## ACCESSORIES

## DESIGNED FOR YOU

Because a bedroom is one of the most personal rooms of the home, Crown Imperial Bedroom Furniture is designed to be as individual as you are. There is a beautiful range of 18 designs available in finishes to create both traditional and fashionable rooms.

Whatever your taste or lifestyle, Crown's bedroom cabinets have the appeal of a fitted bedroom that can be built around your exact needs and room size.

Crown offer a wide choice of styles from traditional doors like Panarea in timeless Pine, and luxurious Hamilton in Cherry, to contemporary finishes in Maple, Beech or White PVC. A choice of modern bi-fold doors adds up-to-the-minute chic, and are ideal for the smaller room.

Crown's gliding bi-fold doors come in a choice of three attractive finishes to create different moods, so across the wide range of Crown bedrooms there is a design to suit every budget and to create the perfect bedroom - just for you.



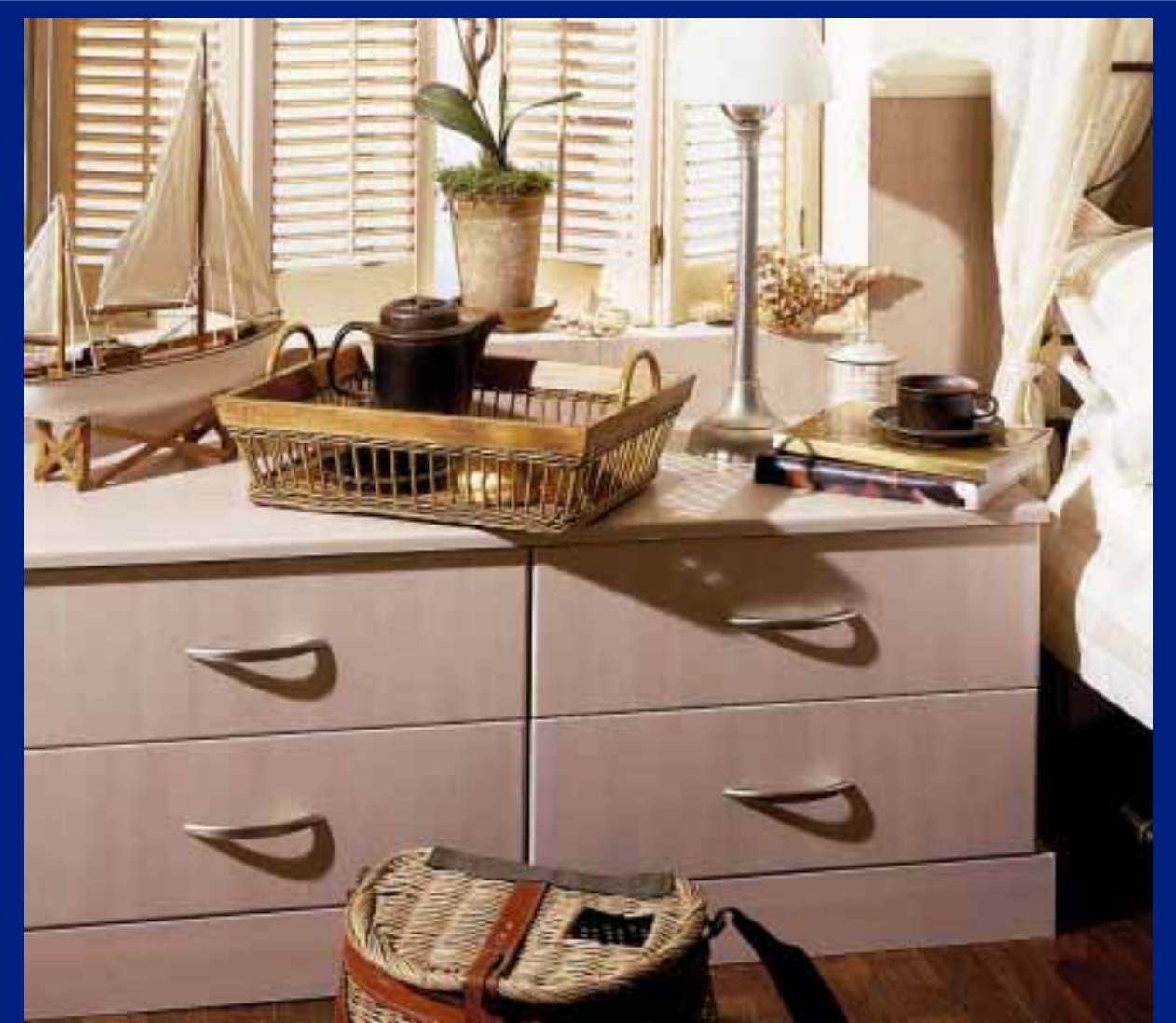
## **A PLACE FOR EVERYTHING**

**Today's bedrooms must not only look good, they must also be practical and flexible enough to suit your busy lifestyle.**

**A cleverly designed room has a special home for everything, from dresses and suits to earrings and cufflinks.**

**Wardrobes are designed to give ample room for your clothes to hang neatly. Drawers have solid bases whilst shelves, built in different combinations, give you all the flexibility you need within the bedroom.**

**Special details like interior beech finishes and decorative glass doors add the finishing touch.**



## **CREATE AN INDIVIDUAL LOOK**

**Because Crown Imperial Bedroom Furniture is made from the finest quality materials and is designed to last, your bedroom will look good for many years.**

**Solid construction means units can be free-standing or built-in, whilst units with multiple width options give you the versatility you need to create an individual look.**

**Personalise your bedroom with imaginative design ideas such as this charming dressing table, or modern bedside combination.**

**Whether you plan a master bedroom, guest or child's bedroom, the flexibility of Crown Imperial Bedrooms will give you the individuality you really desire.**



## ELBA

Elba, an attractive, white door with panel moulding, creates a striking bedroom, complementing the surrounding furnishings whether modern or traditional.

By simply adding a delicately curved metal handle, this bedroom is given an extra stylish finish.

A stable door, like this one over the corner unit, provides a neat and tidy solution for a potentially wasted tight corner.

Also available in an oyster finish as CARMEL.



## CHANTILLY

**Chantilly is a classically curving, beautifully arched door in a crisp white finish.**

**This charming door gives you a sumptuous look, yet Chantilly is tough enough to withstand the wear and tear of modern day life.**

**Free-standing units, like this attractive dressing table, a linen press and extra tall drawer chest, gives your bedroom the individual touch.**





## **VALBONNE**

**A traditional Oyster colour in a classic arch shaped door gives Valbonne timeless appeal and makes it a popular choice.**

**Valbonne is versatile enough to complement both modern and period homes.**

**The choice of a glass door gives you that extra flexibility to co-ordinate your bedroom furniture with your favourite soft furnishings.**



# MERION

Create a bedroom in an authentic regency style with handsome Merion doors in a traditional white finish.

Merion adds a touch of period charm delighting those with the most discerning of tastes.

Because Crown Imperial Furniture is so flexible, you can use a single cabinet beside the bed, or combine cabinets to create a beautiful dressing table.







## LINDRICK

The gentle curves of Lindrick's exquisitely sculptured doors in a pearl oyster finish, brings beauty to classic or contemporary bedrooms.

This bedroom is a perfect example of the quality of Crown's craftsmanship and will give pleasure day after day after day.

Here, overhead boxes have been incorporated into the top of a line of wardrobes creating a charming area to display your favourite possessions.



# POLLENSA

Pollensa's subtle wood grain captured in a smart, glossy white finish effortlessly creates a fashionable bedroom.

These brass handles and doorknobs add a quality detail and complete the chic look.

Why not use Crown's low chest units to make a special feature window seat and a place to enjoy a quiet moment or a lazy evening.





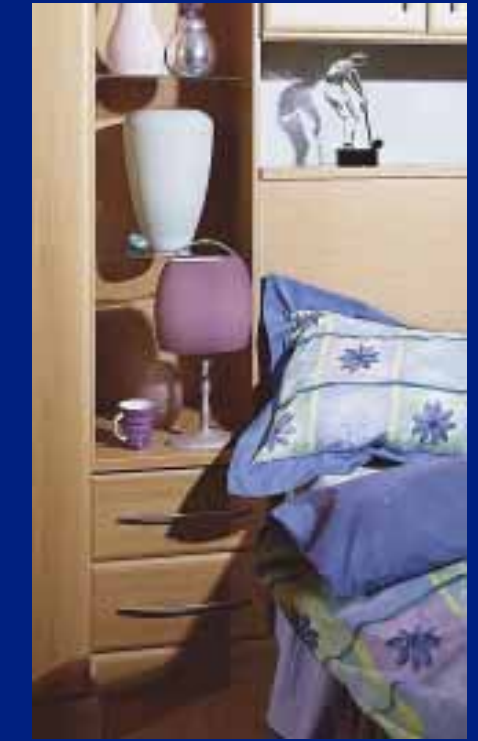
## VERONA

Verona's modern curving edge profile combined with a beautiful maple finish is a winning combination for any bedroom.

Mirror doors make this small room appear larger, whilst Crown's tall wall units create the perfect fitted bedroom for those with a busy lifestyle.

A contrasting low box unit at the foot of the bed really maximises your storage space.





# AVESTA

The smooth profile and delightful beech finish of Avesta is a popular choice.

Transform your own bedroom utilising all available space to give you ample storage that is both neat and tidy.

Creating a totally harmonious look is easy with Avesta, as the natural tones of beech co-ordinate with home furnishings of any style.



# MUIRFIELD

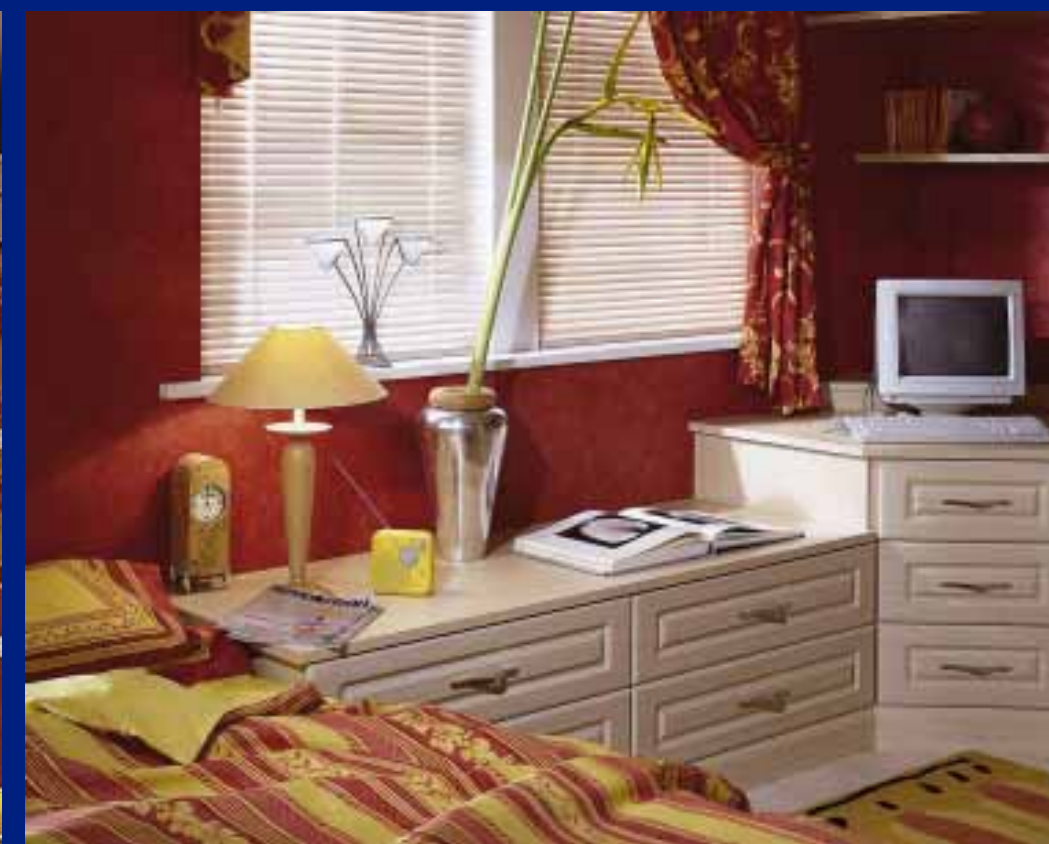
For those who want a contemporary look, Muirfield's maple foil design is a winner.

The subtle grain and attractive tones of the maple effect create a comfortable and relaxed surrounding in any bedroom.

Muirfield lends itself well to imaginative design ideas, like this mid-height cabinet combination concealing the bedroom TV, or this attractive linen press and stylish bedside cabinet.

Also available in grey ash as CASSANDRA.





# PALMERES

The delicate pearwood effect of the Palmeres bedroom creates a perfectly tranquil setting and makes the ideal choice for those seeking something special.

Palmeres demonstrates the practicality and flexibility of all Crown bedrooms, with a useful study area created by combining drawer chests.

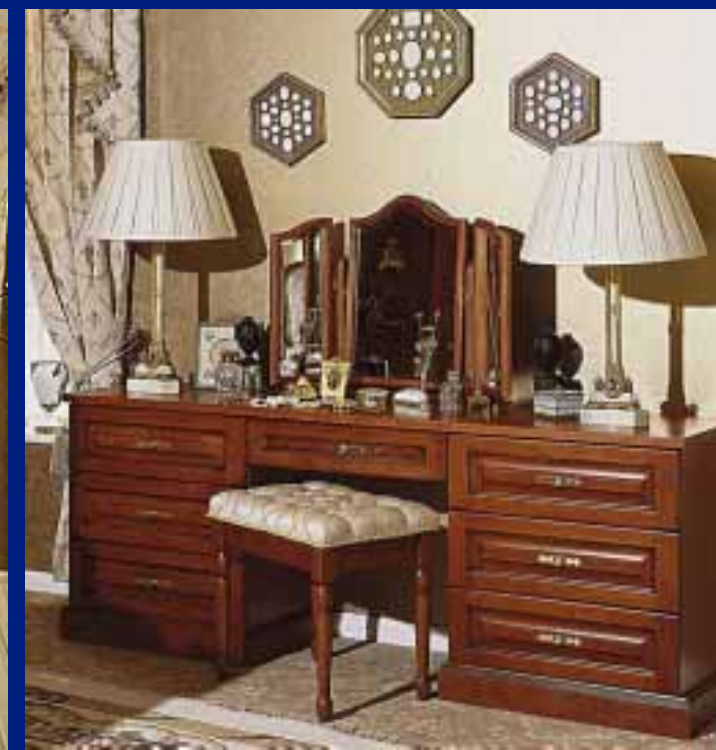


# PANAREA

Crown's solid Scandinavian pine door with a special antique finish has timeless appeal.

Popular for its warmth and traditional good looks, Panarea's individuality is found in the original beauty of solid pine, which mellows so well with time.

Panarea is the perfect partner to so many fabrics and home accessories. It suits charming details like this spacious dressing table, cleverly fitted into a lovely light bay window.



## HAMILTON

The luxurious solid cherry wood frames and traditional veneered panels of Hamilton create a bedroom that is exclusive in every way.

This is truly a bedroom for the connoisseur and shows Crown's craftsmanship at its very best.

A quality lacquered finish completes the striking appeal and stunning looks of Hamilton.





## LUCERNE

The natural appeal of a Light Apple effect finish will attract those who prefer a peaceful look.

Yet behind Crown's effortlessly gliding bi-fold doors and robust drawers, there is plenty of space to conveniently store all the trappings of modern day living.

A co-ordinating vanity unit incorporated cleverly into Crown's bedroom furniture completes this tranquil look.

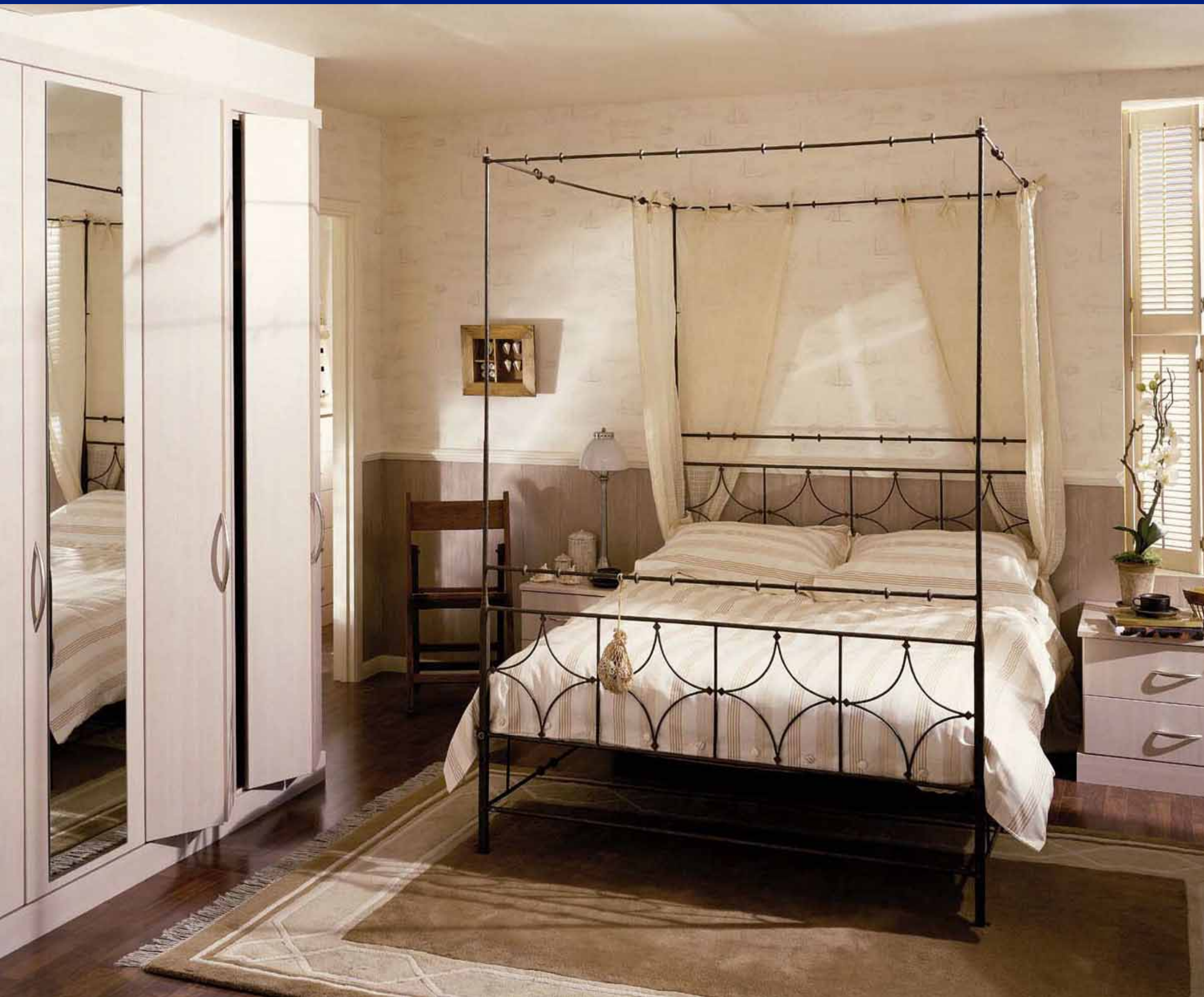


## TREVISO

The attractive modern swirling grain of Natural Applewood is a distinctive feature in this bi-fold door.

Crown's bi-fold system suits the fashion conscious, who want an up-to-the-minute look.

Living space in this loft style apartment has been best utilised by choosing the bi-fold door system, providing an attractive focal point - a striking combination of Crown bedroom units.



## LOCANO

The warm and calming tones of Locano's Pink Pear effect finish has a feminine appeal, complimented by the effortless gliding action of the bi-fold doors.

Crown drawer units make an attractive feature under this window, whilst the choice of fabrics and wall coverings compliments the furniture.

# VERSATILE STORAGE SOLUTIONS

The right choice of storage for your needs and a few finishing touches can make any room the perfect bedroom.





## **YOUR IDEAL BEDROOM**

**When planning your ideal bedroom, make sure your room really works for you by including the right kind of storage; for example, adequate space for full-length garments. Drawers, dressers and cabinets are available in different heights and widths to meet your own requirements.**

**Incorporate mirrored doors where they will be useful when dressing, or glass doors in a linen press to create a luxurious feature in your ideal bedroom.**

**Keep jewellery tidy and safe in a specially designed jewellery tray that sits neatly in knee hole units. Choose stool or mirrors for a totally co-ordinated look.**