

Colour choices



Colorado Red
Solid body colour



Deep Navy³
Solid body colour



Blazer Blue²
Solid body colour



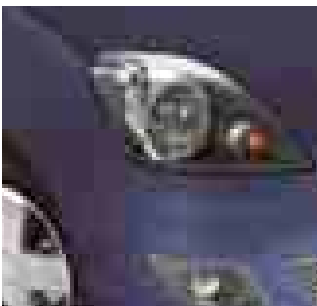
Frozen White
Solid body colour



Moon dust Silver*
Metallic body colour



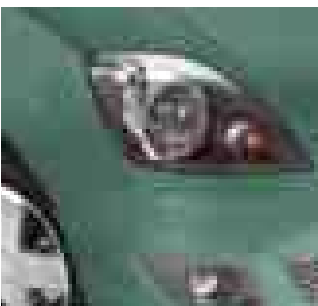
Panther Black*
Metallic body colour



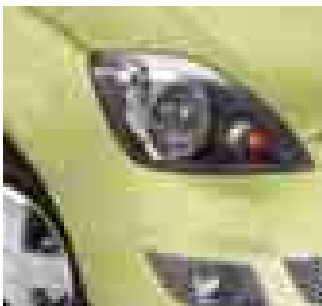
Ocean*
Metallic body colour



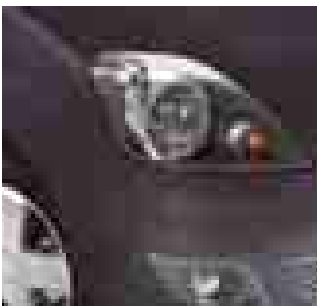
Apple*
Metallic body colour



Verdigris*¹
Metallic body colour



Sublime*¹
Metallic body colour



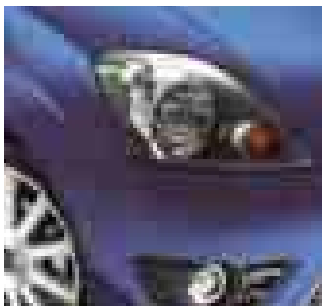
Sea Grey*
Metallic body colour



Tango Red*
Metallic body colour



Amethyst*
Metallic body colour



Performance Blue*
Metallic body colour

*Metallic body colours are available at extra cost.
The Ford Fiesta is covered by the Ford Perforation Warranty for 12 years from the date of first registration. Subject to terms and conditions.
Note The car images used are to illustrate body colours only and may not reflect current specification. Colours and trims reproduced within this brochure may vary from the actual colours, due to the limitations of the printing processes used.

MY 2008 GBR en
The Government fuel figures do not express or imply any guarantee of the fuel consumption of any particular car. The cars themselves have not been tested and there are inevitably differences between individual cars of the same model. In addition, a car may incorporate particular modifications. Furthermore, the driver's style and road and traffic conditions, as well as the extent to which the car has been driven and the standard of maintenance, will affect its fuel consumption. **Insurance groups** are only as recommended by the Association of British Insurers. You should always consult your insurance adviser for confirmation. **Illustrations, descriptions and specifications.** This catalogue was correct at the time of going to print. However, Ford policy is one of continuous product development. The right is reserved to change specifications, colours and prices of the models and items illustrated and described in this publication at any time. For the latest details always consult your Ford Dealer. **Optional equipment.** Throughout this publication, wherever a feature is described as being an 'Option' or 'Optional Fitment/Pack', etc., you should assume that it will be at extra cost to the base vehicle, unless specifically stated to the contrary. All models and colour combinations are subject to availability. ***Ford Information Service.** Calls are charged at national rate and may be recorded for training purposes.



Collect Nectar points at participating Ford Dealers now.
So keep a look out for the latest Ford offers at
www.ford.co.uk/nectar or call the Ford Information Service
on 0845 7111 888.*



Ford recommends BP.



Bluetooth® The Bluetooth® word mark and logos are owned by the Bluetooth SIG, Inc. and any use of such marks by Ford Motor Company is under licence. Other trademarks and trade names are those of their respective owners.

K180



Published by Ford Motor Company Limited,
Brentwood, Essex, England.
Registered in England No. 235446.
FA 1420/9.
BJN 303946. FoE H03E.
PN 772504/0907/180m/GBR en.
September 2007.
© Ford Motor Company Limited.

www.ford.co.uk



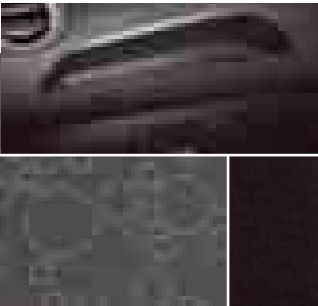
FordFiesta

Feel the difference

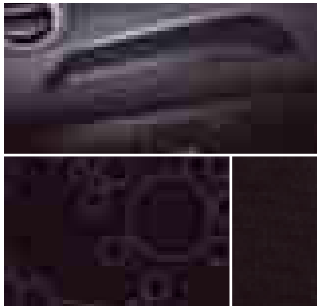




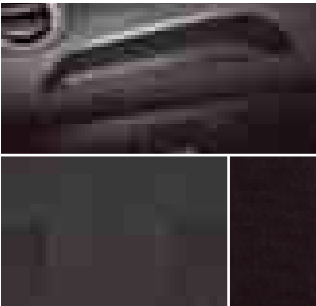
Obsidian Charm



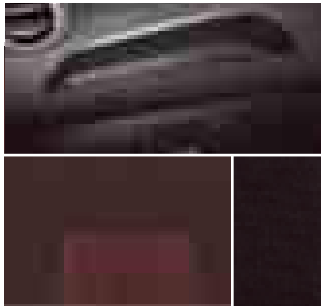
Tahitian Pearl



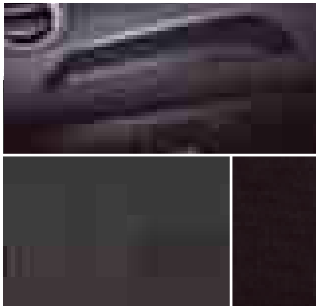
Japanese Pearl



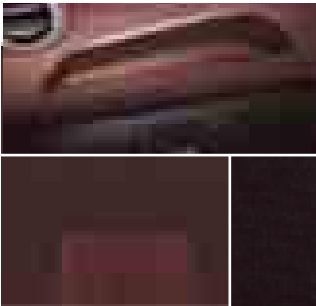
Moonlight Sapphire



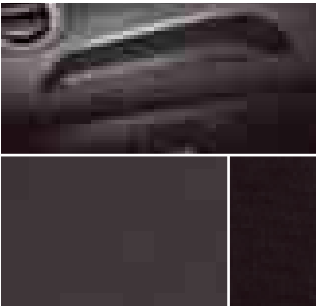
Moonlight Ruby



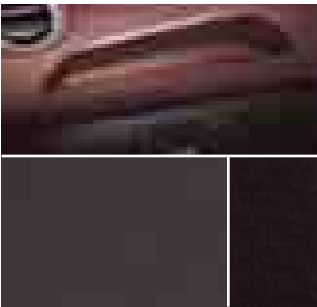
Bohemian Sapphire



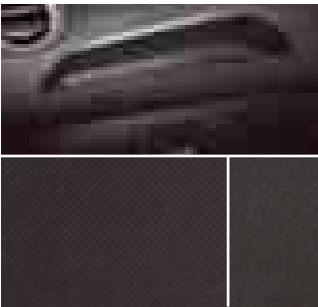
Bohemian Ruby



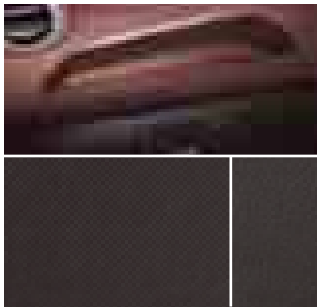
Gunmetal



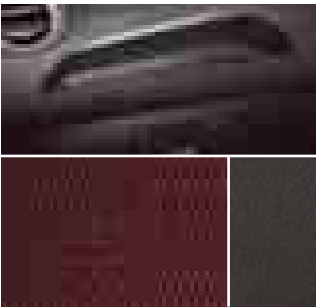
Copper Abyss



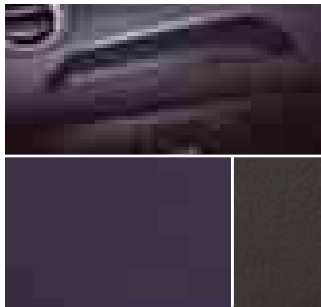
Ebony Haze



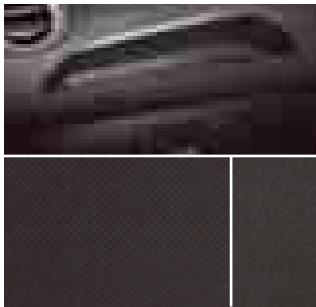
Mystic Fire



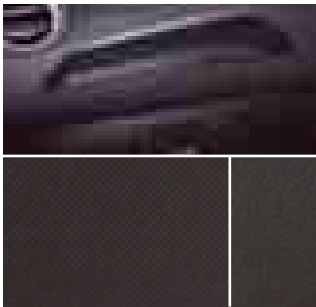
Hot Copper



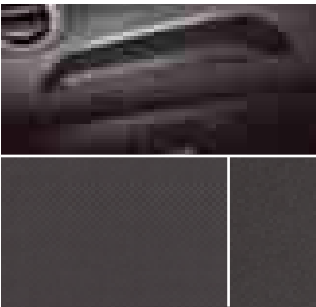
Blue Diamond



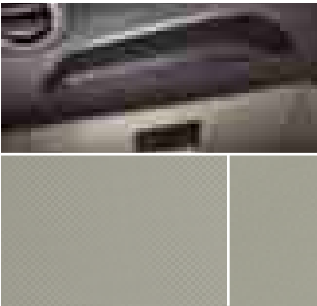
Ebony Haze



Sapphire Haze



Onyx Haze



Moonstone Haze

Colour and trim

Model	Studio	Style	Zetec Climate			Zetec S				ST				Ghia			
Environment colour: Upper/Lower	Dark Pewter/ Ebony	Dark Pewter/ Ebony	Passion Blue/ Ebony	Dark Pewter/ Ebony	Dark Pewter/ Ebony	Passion Blue/ Ebony	Coral/ Ebony	Dark Pewter/ Ebony	Coral/ Ebony	Dark Pewter/ Ebony	Coral/ Ebony	Dark Pewter/ Ebony	Passion Blue/ Ebony	Dark Pewter/ Ebony	Passion Blue/ Ebony	Dark Pewter/ Ebony	Dark Pewter/ Cream
Seat trim/bolster trim	Habitat - Dark Pewter/ Mondus- Ebony	Kyoto - Dark Pewter/ Mondus - Ebony	Kyoto - Ebony/ Mondus - Ebony	Tungsten - Denim/ Mondus - Ebony	Tungsten - Coral/ Mondus - Ebony	Tungsten - Denim/ Mondus - Ebony	Tungsten - Coral/ Mondus - Ebony	Wire -Silver/ Mondus - Ebony	Wire -Silver/ Mondus - Ebony	Louis Embossed/ Verona Leather -Ebony *	Louis Embossed/ Verona Leather -Ebony *	Wire - Red/ Verona Leather - Ebony	Wire - Blue/ Verona Leather - Ebony	Louis Embossed - Ebony/ Verona Leather - Ebony *	Louis Embossed - Ebony/ Verona Leather - Ebony *	Lauren Embossed - Dark Pewter/ Prima Leather - Dark Pewter **	Lauren Embossed - Cream/ Prima Leather - Cream **
Door trim and colour	Modern in Ebony	Modern in Ebony	Modern in Ebony	Modern in Ebony	Modern in Ebony	Modern in Ebony	Modern in Ebony	Modern in Ebony	Modern in Ebony	Hannover Vinyl in Ebony	Hannover Vinyl in Ebony	Hannover Vinyl in Ebony	Hannover Vinyl in Ebony	Hannover Vinyl in Ebony	Hannover Vinyl in Ebony	Hannover Vinyl in Dark Pewter	Hannover Vinyl in Cream
Interior Combination Name	Obsidian Charm	Tahitian Pearl	Japanese Pearl	Moonlight Sapphire	Moonlight Ruby	Bohemian Sapphire	Bohemian Ruby	Gun Metal	Copper Abyss	Ebony Haze	Mystic Fire	Hot Copper	Blue Diamond	Ebony Haze	Sapphire Haze	Onyx Haze	Moonstone Haze
Solid body colours																	
Colorado Red	●	●			●			●		●				●		●	
Blazer Blue ²	●	●	●	●		●										●	●
Frozen White	●	●	●	●	●	●	●	●	●	●	●	●	●	●	●	●	●
Deep Navy ³	●	●	●	●		●										●	●
Metallic body colours																	
Moondust Silver	○	○	○	○	○	○	○	○	○	○	○	○	○	○	○	○	
Panther Black	○	○	○	○	○	○	○	○	○	○	○	○	○	○	○	○	○
Ocean	○	○	○	○		○										○	○
Sublime ¹	○	○	○													○	○
Verdigris ¹	○	○	○	○												○	
Apple	○	○		○												○	
Sea Grey								○	○	○	○						
Tango Red	○	○			○		○									○	○
Amethyst	○	○		○												○	○
Performance Blue													○	○	○		

● = Standard, ○ = Optional, at extra cost, * Leather trim are options at extra cost ** Fabric trim available in lieu of leather Dark Pewter leather replaced by Ebony Cloth (Opal wave), Cream leather replaced by Cream cloth (Rhodium Wave). 1= Not available from January 2008, 2 = Available from January 2008, 3 = Limited availability from November 2007

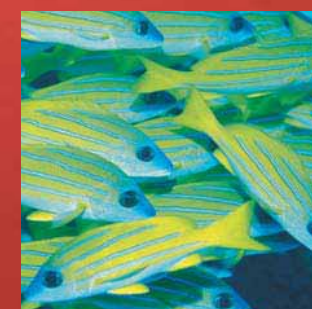
Model Zetec Climate (front cover, opposite, below and next spread)
Options (at extra cost) Tango Red metallic paint,
 16" 7-spoke alloy wheels, Rain-sensing wipers with auto headlamps

Ford Fiesta. Live life in full colour

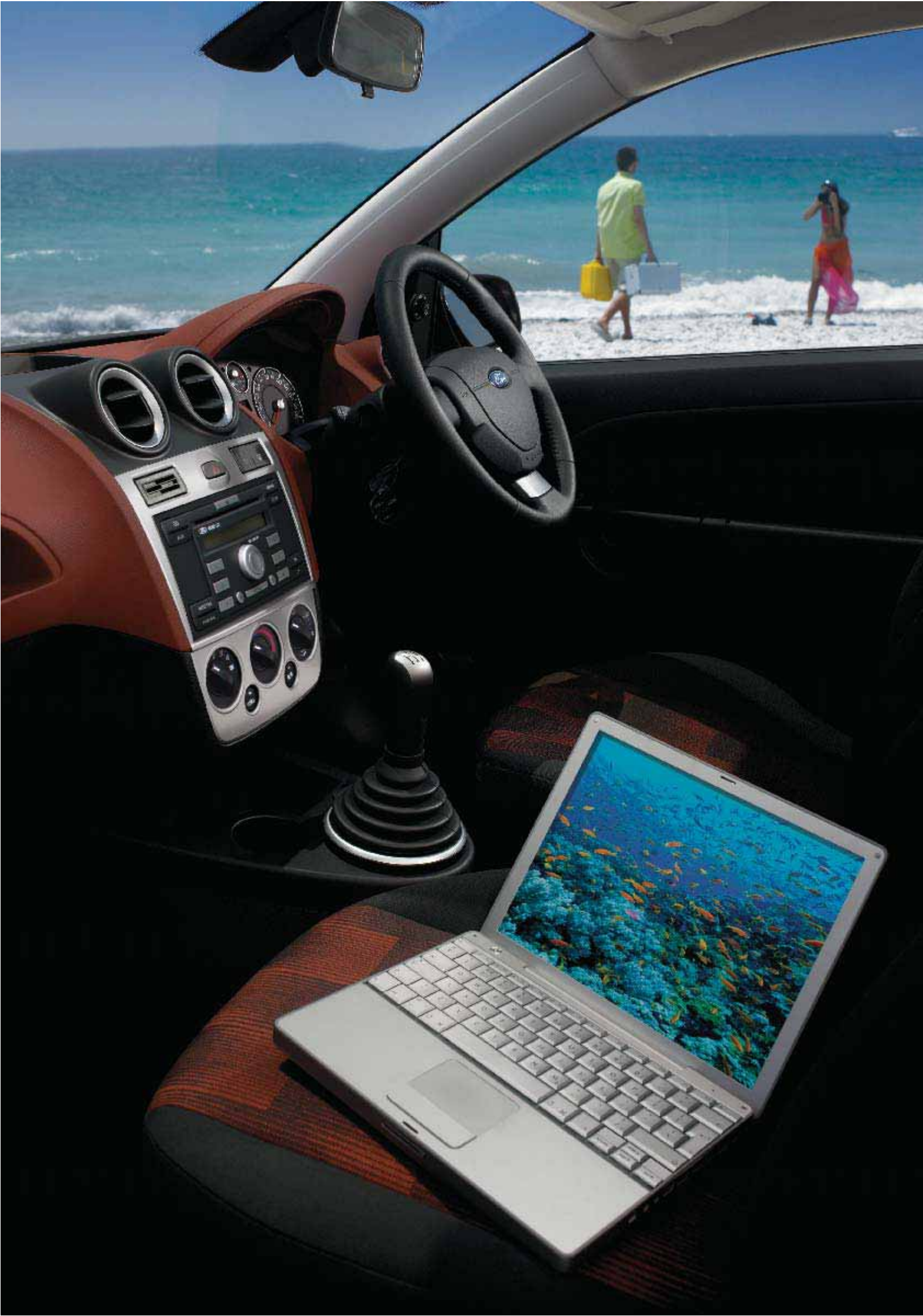
Life's there for the taking – and Ford Fiesta is first in line.
 With its bold exterior, impressive in-car technology and more
 colour choices than ever before, Ford Fiesta injects passion into
 every journey.

And with a range of advanced engines to reward you, a rigid body
 structure to reassure you, and an advanced safety system to give
 you confidence, Ford Fiesta has the whole spectrum covered.

Page appears on inside
back cover

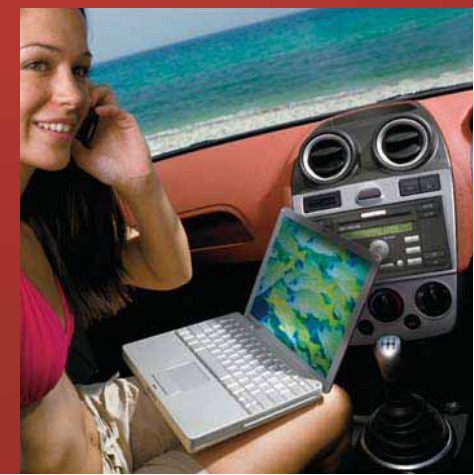


Discover hidden depths



Model Zetec Climate with
Bohemian Ruby interior (Above/opposite)
Options (at extra cost) Tango Red metallic paint,
16" 7-spoke alloy wheels, Technology Pack

The more you get to know Ford Fiesta,
the more you'll love everything about it.
Its contemporary design. Its expressive
colours. Its generous space. And an
interior that's equipped to keep up with
your lifestyle.



More on the horizon

With Ford Fiesta's responsive power and handling, you'll soon see the open road from a new perspective. In fact, you could be forgiven for wishing your journey would last a little longer.



Model Zetec Climate with Bohemian Ruby interior
Options (at extra cost) Tango Red metallic paint, 16" 7-spoke alloy wheels, Technology Pack.

Shame there's only
one driving seat



Model Fiesta ST in Frozen White with Blue Diamond interior
Options(at extra cost), Exterior Styling Pack,
Electronic Automatic Temperature Control (EATC),
Technology Pack.



When responsive power and precise
handling combine, you're rewarded with
a controlled yet inspiring driving
experience. And that's exactly what the
Ford Fiesta delivers. There's only one
problem – you may find you'll be fighting
over who gets to drive.

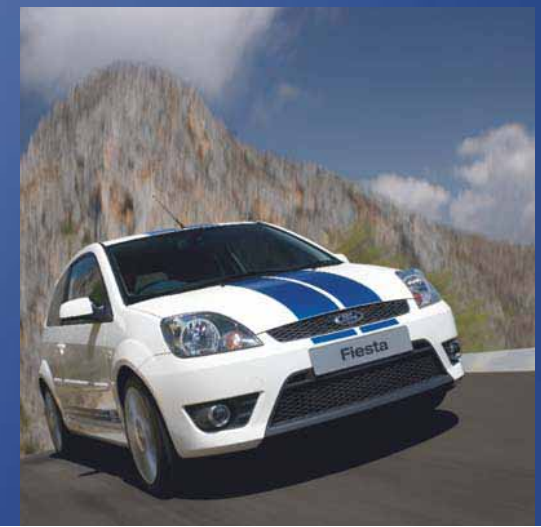


Designed for real-life adventures



Enduring the most rigorous testing regimes, Ford Fiesta was designed to indulge your adventurous side. Across the range, you'll discover remarkable bend-hugging ability through Ford Fiesta's rigid body structure and advanced suspension. And, of course, there's the exciting series of sports derivatives – engineered to produce extra adrenalin.

Model Fiesta ST in Frozen White
Options (at extra cost) Exterior Styling Pack, Rain-sensing wipers with auto headlamps.



Feel the power

Real power. Real performance. Real refinement. Ford Fiesta's range of advanced petrol and diesel engines deliver all three – as well as ensuring excellent fuel economy. Topping the range are the sports-inspired 2.0-litre 150 PS petrol engine and high-output 1.6-litre Duratorq TDCi 90 PS diesel. And with a choice of three smooth transmissions, driving the Ford Fiesta is serious fun – whatever your game plan.



Engine technology

From the acclaimed 1.25-litre 16V Duratec petrol engine to the 1.6-litre 16V Duratorq TDCi, Ford Fiesta's new-generation engine technology delivers outstanding performance and fuel economy. And, packing even more punch is Fiesta ST's powerful 2.0-litre 150 PS Duratec petrol engine.

Smooth transmissions

The super-smooth Durashift 5-speed manual gearbox comes as standard across the range, while the Durashift EST advanced manual transmission offers the choice of sequential manual mode or automated mode. And, for the ultimate in effortless motoring, there's the responsive and refined Durashift automatic transmission.



A sporting heritage

With the Fiesta Junior World Rally Car and the Ford GT in its bloodline, a new breed of Ford Fiesta seeks adventure on the road and rally circuit.

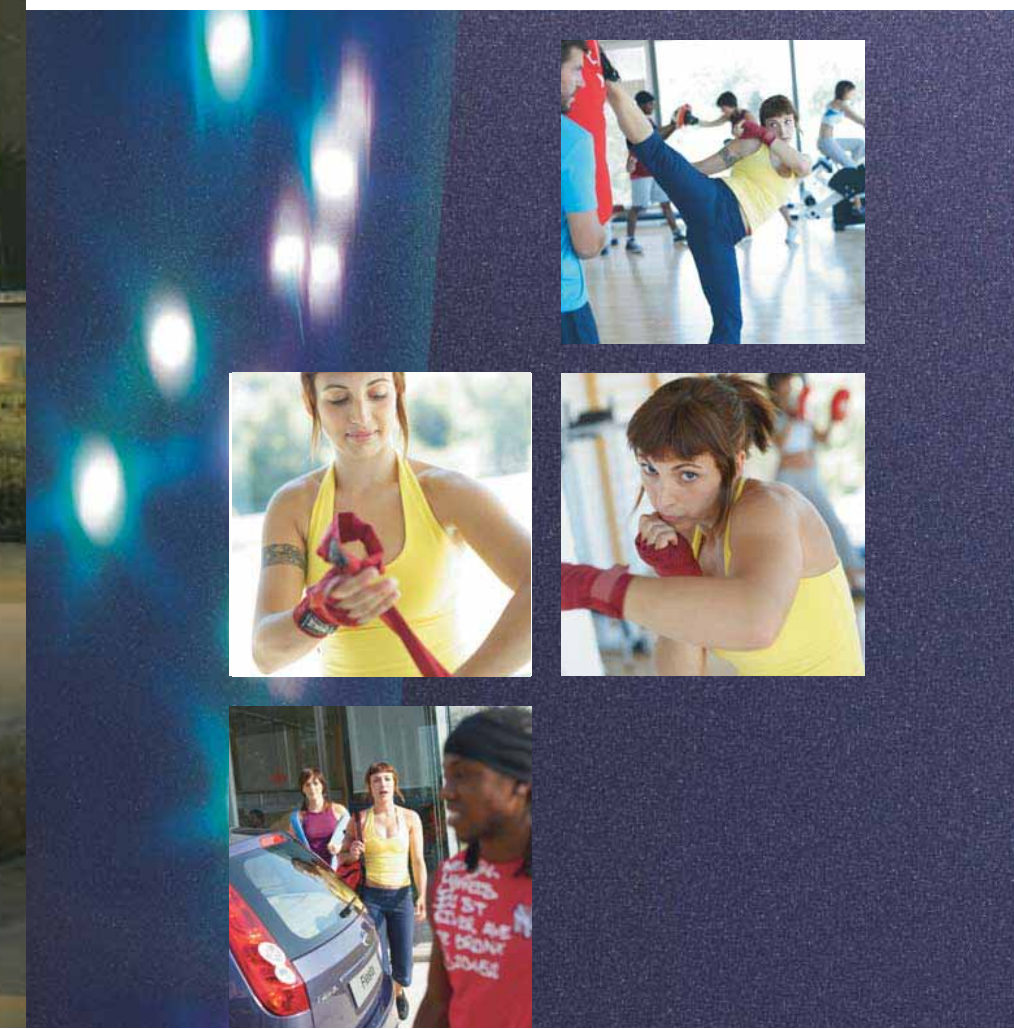


Model Fiesta ST in Frozen White
Options (at extra cost) Exterior Styling Pack, Rain-sensing wipers with auto headlamps.

Model Ghia with Moonstone Haze interior
Options (at extra cost) Amethyst metallic paint

Don't just roll with the punches

Never content to blend in, Ford Fiesta boasts a wide range of features and in-car technology. If you're going to take on a challenge, you'll need to be fully equipped.



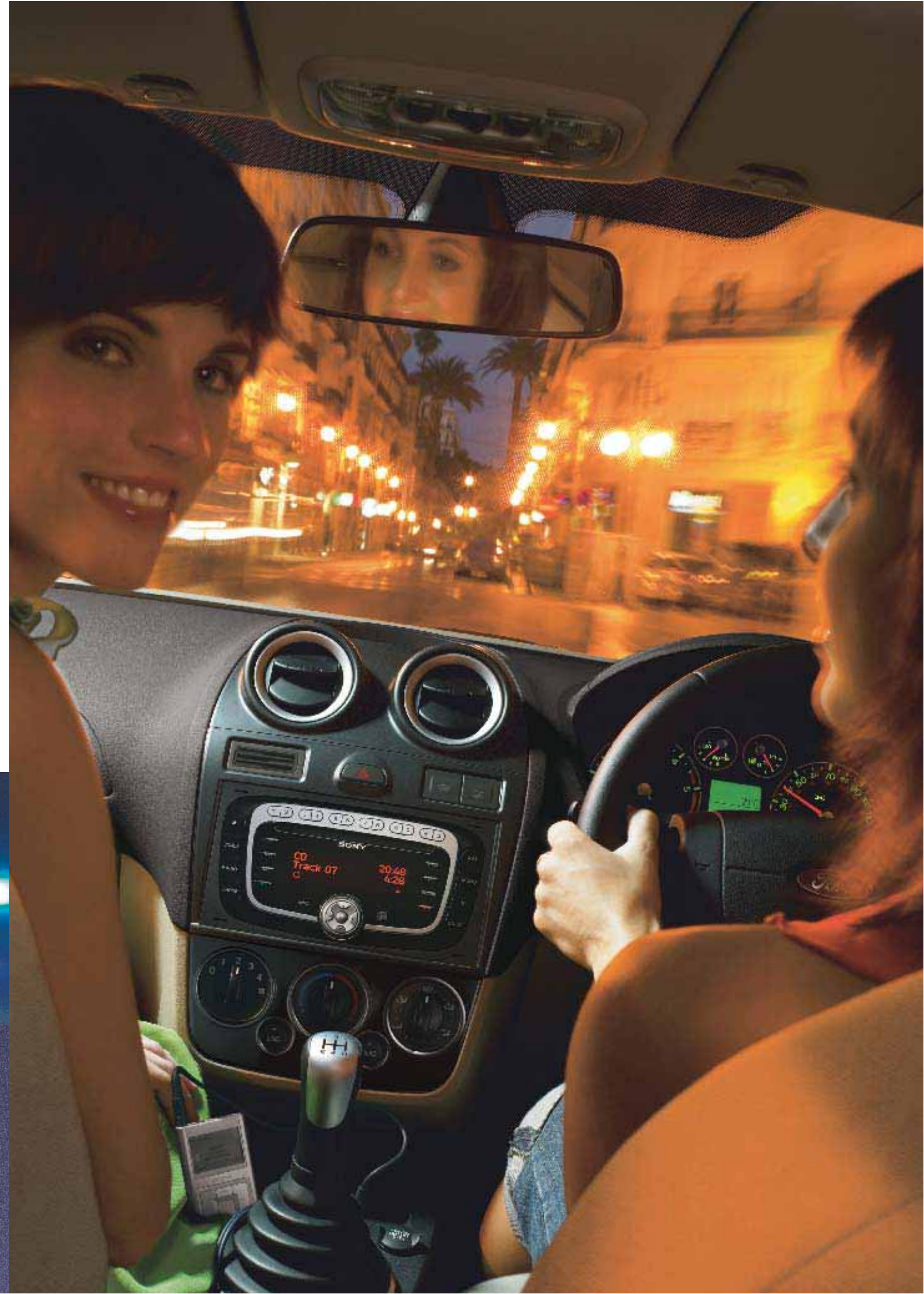


Model Ghia with Moonstone Haze interior*
Options (at extra cost) Amethyst metallic paint,
 Sony CD audio system
Accessories (at extra cost)
 15" 9-spoke alloy wheels
 * Does not include MP3 player or lead



If there's a cheeky back route that will avoid the traffic, you can be sure Ford Fiesta's already thought of a way to guide you through. While a built-in satellite navigation system displays your route (accessory at extra cost), superb manoeuvrability helps you reach your destination with ease. Even those tiny gaps aren't a problem, thanks to Ford Fiesta's innovative power-fold door mirrors (standard on Ghia, option at extra cost on selected models).

Time for some quick thinking



Little luxuries that make big statements

It's great to have everything you need, but even better to have some of those extras that you've always wanted. Ford Fiesta puts fantastic new in-car technology at your fingertips – so you don't have to have a big car to make a big impression.

Bosch Blaupunkt TravelPilot EX navigation system

New-look navigation system easily finds the most direct route to your destination. You'll never be lost or have to waste time hunting through maps again. Available as an option. (at extra cost)

Bluetooth® Hands-free Telephone and Voice Control System

To aid your concentration on the road, the system automatically mutes the audio when you receive a call and plays the caller's voice through the car speakers for maximum clarity. Simply say "CD two, track six, volume ten" and that's exactly what you'll get. Just a flick of a switch on the audio remote control stalk provides voice control of your audio system, phone and climate control**. Available as an option (at extra cost).



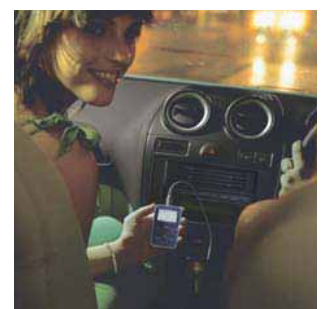
Multifunction trip computer

Whether it's fuel economy, miles to empty, average speed, trip distance or external temperature, Ford Fiesta's trip computer keeps you informed. Standard on all models except Studio, Style and Style Climate.



Electronic Automatic Temperature Control

Select a temperature that's just right and let the Ford Fiesta keep things that way with its air conditioning, featuring Electronic Automatic Temperature Control. Available on selected models (at extra cost).



Music Connection Socket*

As well as offering its own high-quality audio equipment, Ford Fiesta also lets you connect your own MP3, personal CD or cassette player. Not available with Durashift automatic.

*Does not include MP3 player or lead.

* Does not include mobile phone or telephone cradle.

** If Electronic Automatic Temperature Control (EATC) is fitted.

It's good to show your sensitive side

As well as being a fun-loving adventurer, Ford Fiesta is also the intelligent, sensitive type. From its auto headlights to its rain-sensing wipers, Ford Fiesta can detect what's needed and react accordingly. It's all about making your life easier.

One-shot-down driver's window

Just a brief touch of a button is all it takes to fully open the driver's window. Standard on all models except Studio.

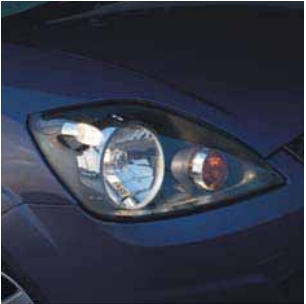


Rear parking distance sensor

No need to pass by those tiny parking spaces. Fiesta's rear parking sensor helps guide you in safely and easily. Available on all models (at extra cost).

Power-fold door mirrors

A button on your remote key lock enables Fiesta's door mirrors to retract as you lock the vehicle. You can also use this function while inside the car to help you squeeze through tight spaces. Standard on Ghia. Available on selected other models (at extra cost).



Auto headlights

Fiesta's auto headlights switch on automatically when light levels begin to drop. Standard on Ghia. Available on selected other models (at extra cost).



Rain-sensing wipers

A discreet sensor mounted on the windscreen turns on Fiesta's windscreen wipers when it begins to rain. Standard on Ghia. Available on selected other models (at extra cost).

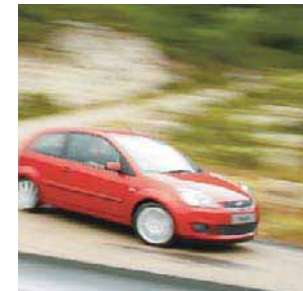


Taking safety to a new level

Home Safe headlights

Ford Fiesta's Home Safe headlights will stay on for a few seconds to illuminate your path after you've parked.

Ford Fiesta's rigid passenger safety cell, energy-absorbing crumple zones and Intelligent Protection System deliver incredible occupant protection in the event of a collision. But Ford Fiesta's commitment to your well-being now extends even further with its Home Safe headlights that light your path as you leave the car. Because it's those little things that can make all the difference.



Airbags

Intelligent Protection System is Ford's holistic approach which integrates a body structure which is optimised for strength and crashworthiness with state-of-the-art restraints equipment, including driver aids that help avoid an accident, and features that lessen the likelihood of injury in an impact. Front seat side thorax airbags and side curtain airbags (at extra cost) provide enhanced protection in a side impact.

Passenger airbag deactivation switch*

If you want to carry a rearward-facing child seat in the front of the vehicle, please ensure you fit the passenger airbag deactivation switch (dealer-fit accessory). DO NOT place a child in the front passenger seat if this option is not fitted.

Anti-submarining seats

All seats have anti-submarining ramps under the front edges of the cushions to help prevent passengers sliding under the seat belts in a front impact.

Anti-lock braking system

The electronic anti-lock braking system helps the driver to retain full steering control, even under emergency braking conditions.

Electronic Stability Programme (ESP)

Matching the car's response with the driver's intention, the optional ESP helps restore stability at the first sign of a deviation. Available on selected models (at extra cost).

***Note: A child seat should never be placed on the front passenger seat when the Ford vehicle is equipped with an operational front passenger's airbag. The safest place for children is properly restrained on the rear seat.**

Vehicles shown feature accessory wheels (at extra cost).





Bodystyles and series

From the confident Studio to the sports-inspired Fiesta ST, there's a Ford Fiesta to suit your lifestyle. While the distinctive 3 or 5-door bodystyles show off Ford Fiesta's bold good looks.



Style



Tahitian Pearl



Japanese Pearl

- Intelligent Protection System with 'smart' driver's and front passenger's airbags*
- Anti-lock brakes (ABS) with electronic brake-force distribution
- 15" steel wheels
- Body coloured bumpers
- Electrically-operated front windows, one-shot-down drivers window
- Remote, central/double locking with illuminated entry
- Courtesy light with theatre-style dimming
- Stereo radio/CD
- Power-assisted steering
- Immobiliser - PATS (Passive Anti-Theft System)
- Music connection socket
- Tilt-adjustable steering column
- 60:40 split/folding rear seats with folding back and flip-up cushion
- Driver's seat with manual height adjustment

Style Climate - in addition to Style

- Electrically-operated heated door mirrors
- Quickclear heated windscreen
- CFC-free air conditioning with air recirculation

***Note: A child seat should never be placed on the front passenger seat when the Ford vehicle is equipped with an operational front passenger's airbag. The safest place for children is properly restrained on the rear seat.**

Model Style with Tahitian Pearl interior
Options (at extra cost) Apple metallic paint

Zetec Climate



Moonlight Sapphire



Moonlight Ruby



Bohemian Sapphire



Bohemian Ruby

Additional to Style

- 15" 5-spoke alloy wheels
- Rear spoiler
- Front fog lights
- Leather-wrapped steering wheel with aluminium insert
- Trip computer
- Body-coloured electrically-operated heated door mirrors
- Quickclear heated windscreen
- CFC-free air conditioning with air recirculation
- Body-coloured side-mouldings, door handles and tailgate handle
- Clear side repeaters
- Silver dashboard bezel
- Chrome front grille

Model Zetec Climate with Moonlight Ruby interior
Options (at extra cost) Tango Red metallic paint, Rain-sensing wipers and auto headlamps

Fiesta Zetec S



Gunmetal



Ebony Haze



Mystic Fire



Copper Abyss

- 16" 12-spoke sports alloy wheels
- Sports fog lights
- Lowered and stiffened sports suspension
- Sports gear knob and short-shift, close-ratio gearbox
- Sports 'aero' kit including high-intake front grille and rear spoiler
- Sports front seats
- CFC-free air conditioning with air recirculation
- Leather-wrapped steering wheel with aluminium insert
- Perimeter alarm
- Stereo radio/CD
- Music connection socket
- Electrically-operated front windows, one-shot-down drivers window
- Remote, central/double locking with illuminated entry

Model Zetec S with Copper Abyss interior
Options (at extra cost) Panther Black metallic paint, Electronic Automatic Temperature Control (EATC), Visibility Pack

Fiesta ST



Ebony Haze



Hot Copper



Blue Diamond



Sapphire Haze

Additional to Zetec S

- 2.0-litre 150 PS Duratec engine
- Unique ST design 17" 11-spoke alloy wheels
- Lowered and stiffened sports suspension
- Up-rated braking system
- Sports-tuned steering
- Performance exhaust system
- ST-branded partial leather and performance fabric sports front seats
- Body-coloured sports 'aero' kit including high-intake front grille, side skirts and rear spoiler
- Body-coloured door handles and bodyside mouldings
- Quickclear heated windscreen
- Power heated, body-coloured door mirrors
- Unique sports gear knob and ST leather-wrapped steering wheel
- ST scuff plates, metal pedals and silver-effect door pulls
- Sony CD audio system with remote controls
- Thatcham Category 1 alarm

Model ST with Blue Diamond interior

Options (at extra cost) Performance Blue metallic paint, Electronic Automatic Temperature Control (EATC)

Ghia



Moonstone Haze



Onyx Haze

Additional to Zetec Climate

- Leather trim
- 15" 6-spoke alloy wheels
- Leather-covered gear knob with silver insert
- Automatic headlamps
- Rain sensing wipers
- Electrically-operated and heated door mirrors with power-fold
- Perimeter alarm
- Stereo radio/CD with remote controls
- Scuff plates
- Carpet mats
- Map reading lights
- (Rear spoiler not included)

Model Ghia with Onyx Haze interior
Options (at extra cost) Ocean metallic paint,
 Electronic Automatic Temperature Control (EATC)

Finance and services

Across the UK, a dedicated network of Ford Dealers is equipped and trained to meet the needs of today’s drivers. Because of our coveted reputation for quality and reliability, from the moment your new vehicle leaves the showroom, you are assured of lasting, attentive service in many ways. Ford not only cares through Dealers, we also offer a variety of finance and leasing schemes to suit the needs of both the private and business customer. With our wide choice of plans and services no one is more committed to delivering complete motoring confidence and total peace of mind than Ford.

Ford Credit

As part of Ford Motor Company Limited, Ford Credit offers convenient and competitive financial services to Ford customers. Choose, try, finance and insure your Ford – without having to leave the showroom.

Ford Options Ford Options is the flexible way to finance your Ford. If you are looking to renew your vehicle more often, this is the ideal plan. At the end of the agreement, choose which option suits you best – own the vehicle, return it or choose a new one.

Ford Acquire Ford Acquire is a simple method of vehicle finance for private customers and business users. Convenient to arrange, and with flexible terms to suit your needs, owning your Ford has never been so easy.

Ford Business Partner As a specialist division of Ford Credit dedicated to partnering businesses, Ford Business Partner will work with you to achieve a complete Contract Hire transport solution.

Ford Insure Ford Insure offers a wide range of services, benefits and cover for you and your Ford including Comprehensive Motor Insurance, Payment Protection Plan* and Guaranteed Asset Protection**. When you purchase a Ford from a Ford Dealer you will receive 7 days' Driveaway cover*** free when you call Ford Insure for a no-obligation annual quotation.

What's the next step? Your local Ford Dealer will be pleased to help if you have any further queries and advise you of current special promotions. Your Dealer can also supply a personalised quotation for the finance plan and vehicle of your choice.

To find your local Ford Dealer, please call 0845 7111 888.

Services

Company Car Drivers Talkback – the company car drivers’ club offers members extended test drives, tax and buying advice as well as special offers and invitations to special driver events. To join, log on to www.talkbackclub.com or call 0845 605 55 66 – it’s free and you don’t even have to drive a Ford.

Ford Mobility The Ford Mobility Customer Care Centre provides comprehensive information on mobility related motoring issues. Our dedicated team of Ford Mobility advisors can also talk you through the Mobility Scheme - the leading contract hire scheme open to all recipients of the Higher Rate Mobility Component of the Disability Living Allowance (HRMCDLA). Call 0845 60 400 19 or visit www.ford.co.uk/mobility for further information.

Ford Protect Every new Ford car sold is protected by a 3-year/60,000 miles Ford Protect Classic Plan Warranty. In addition, it will also come with Ford Assistance for 1 year, providing roadside assistance in the UK and throughout Europe. You can also upgrade to a Ford Protect Premium Plan, giving you the option of scheduled servicing and extended Ford Assistance.

Ford Rapid Fit The national fast-fit network backed by Ford, offering you the convenience of a ‘no-appointment-necessary, while-you-wait’ service covering tyres, exhausts, brakes, batteries and much more. There are over 260 sites nationwide.

Ford Accident Repair Centres Should your Ford require accident repair, an approved Ford Accident Repair Centre is the best place to return your vehicle to it’s pre-accident condition. Repairers displaying the Ford Accident Repair Centre sign meet the rigorous customer service, technical and quality standards demanded by Ford. Ford trained technicians, the latest repair equipment and the use of original parts mean that the future safety and value of your vehicle are assured.

Ford Customer Relationship Centre In the unlikely event that your Ford Dealer can’t help you or you need to speak to Ford directly, the Ford Customer Relationship Centre is just a phone call away. Call local rate 0845 841 1111.

Ford Rental – local service nationwide Providing quality car and van rental from Ford’s latest model range. For further information contact your local Ford Dealer.



Care for the environment is one of Ford's oldest concerns. Long before it became fashionable or required by law, we were questioning established practices and searching for better, more efficient alternatives. Like so much of our philosophy, the concept of sustainability dates right back to our founder, Henry Ford, a man who could not abide unnecessary waste.

Driving into the future

Lighter, quieter, and using less fuel with lower emissions, today's Ford engines create less impact on the environment than ever before. Our smooth, quiet and economical passenger car diesel engines comply with the strict Euro IV-emissions regulations while, at the same time, improve the overall performance. Indeed, our new Galaxy 2.0 Duratorq TDCi 140 PS diesel engine develops higher torque than its predecessor, while producing even less carbon dioxide (CO₂) emissions.

A natural approach to alternative fuel

Imagine a car that runs on renewable fuel derived from sugar beet, cereal or wood shavings. Impossible? Then think again. Ford has been successfully selling the Focus Flexi-Fuel in Sweden since 2001, where sales now account for 80% of all Focus models sold. The 1.8-litre car, which can run on petrol, bioethanol, or a mixture of the two, offers a 70% reduction in carbon dioxide emissions compared to a petrol model, without any loss in performance. Because bioethanol fuel is plant-based, the CO₂ emitted at the tailpipe is broadly equal to the CO₂ absorbed while the plants were growing.

Recycling for good

Legend has it that Henry Ford used timber from old packing cases to build floors for the Model T. Today, the average Ford vehicle includes more recycled material than ever. Across our European vehicle range, more than 300 parts are made from recycled non-metallic materials. This helps to safeguard raw materials and diverts unwanted waste from landfill sites. Combined, our use of parts manufactured from recycled and renewable materials kept almost 35,000 tonnes* of waste out of landfills.

*2004 figures.

Finance subject to status and conditions, to over 18s only. Guarantees/Indemnities may be required. Written quotations available on request: Freepost Ford Credit. Correct at the time of going to print. Contact your Ford Authorised Dealer for terms and conditions. Business Partner Contract Hire is provided by Lex Vehicle Leasing Ltd. Registered Office: Charterhall House, Charterhall Drive, Chester CH88 3AN. Registered in England No.2952868. Ford Insure is underwritten by Norwich Union Insurance Limited, registered in England no. 99122. A member of the Aviva group. Authorised and regulated by the Financial Services Authority. Registered office: 8 Surrey Street, Norwich NR1 3NG. For our joint protection, calls may be recorded and/or monitored. *Please refer to Payment Protection policy booklet for full details of the benefits and exclusions. **Ford Insure Guaranteed Asset Protection is underwritten by Mapfre Asistencia Compania Internacional de Seguros y Reaseguros Sociedad Anonima. Authorised and regulated by the Financial Services Authority. Registered address: Mapfre House 2/3 Philpot Lane, London, EC3M 8AN. Company Number FC021974. Branch Number BR008042.. ***Excesses apply. Please refer to Summary of Cover for details. Maximum 5 vehicles. Not available in conjunction with any other promotion.



Exterior Styling Pack

Fiesta ST's Exterior Styling Packs add the ultimate sporty look. Choose from over-the-top stripes, side stripes or a combination of both. Available as an option and accessory for Fiesta ST and as an accessory for Fiesta Zetec S (at extra cost). Exterior Styling Packs also available in silver and white.

Add a personal touch to your new Fiesta

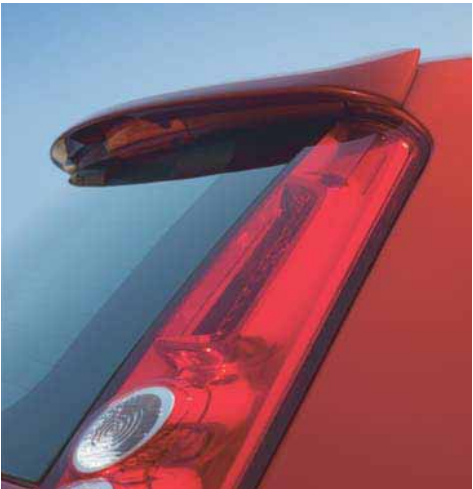
With a range of options and accessories to choose from, you can make your Ford Fiesta uniquely yours. Personalise your style, sportiness, practicality and comfort and enhance your driving enjoyment

Option = Can only be ordered with your new vehicle (at extra cost).
Accessory = Available from your Ford Dealer (at extra cost).



Chrome effect tailgate moulding

Attractive chrome effect tailgate moulding provides an elegant and stylish look. (Accessory)



Rear spoiler

An aerodynamic rear spoiler adds a purposeful edge to Fiesta's fun-loving character. (Accessory)



Eibach suspension-lowering kit

The Eibach suspension lowering kit enhances driving performance and handling as well as giving a more sporty appearance. Lowers the car by 30 mm. (Accessory) Not compatible with Fiesta ST



Opposite: Distinctive 16" 7-spoke 'sport' alloy wheel (option and accessory)

Style in motion

Each striking wheel has been designed to complement Ford Fiesta's dynamic bodystyle. Choose from a selection of stylish wheel options. All give your Fiesta a distinctive look that's guaranteed to get you noticed and make heads turn.

Option = Can only be ordered with your new vehicle (at extra cost).
Accessory = Available from your Ford Dealer (at extra cost).

Standard and optional wheels

Accessory wheels

									
14" steel with wheelcover (Standard on Studio)	15" steel with wheelcover (Standard on Style/Style Climate)	15" 5-spoke classic alloy wheel (Standard on Zetec Climate)	15" 6x2-spoke alloy wheel (Standard on Ghia)	15" 9-spoke alloy wheel (Optional on Style)	15" 9-spoke alloy wheel (Accessory)	15" 6x2-spoke alloy wheel (Accessory)	15" 5-spoke alloy wheel (Accessory)	15" 5-spoke alloy wheel (Accessory)	16" 7-spoke alloy wheel (Accessory)
									
17" 11-spoke alloy wheel (Standard on ST)	16" 12-spoke alloy wheel (Standard on Zetec S)	16" 7-spoke alloy wheel (Option)	16" 7-spoke 'sport' silver alloy wheel (Option)	16" 7-spoke 'sport' machined alloy wheel (Option)	16" 7-spoke 'sport' silver alloy wheel (Accessory)	16" 7-spoke 'sport' machined alloy wheel (Accessory)	16" 8-spoke alloy wheel (Accessory)	16" 12-spoke alloy wheel (Accessory)	

Entertainment and navigation

Ford Fiesta offers high-quality navigation and entertainment systems, for your convenience and enjoyment. Various audio systems to suit your needs are also available.

Option = Can only be ordered with your new vehicle (at extra cost).

Accessory = Available from your Ford Dealer (at extra cost).



Becker navigation system 'Indianapolis Pro'

Single DIN-sized navigation system, known for its brilliant sound and superior navigation abilities (European map data included). Built-in Bluetooth® hands-free phone capability and TMC traffic announcements. Also plays MP3. Can be combined with an additional Becker 6-CD changer. (Accessory)



Mobile navigation system

Garmin Nüvi 360T with 3.5" TFT touch-screen display, MP3, audio book player and JPEG picture viewer. Offers navigation and points of interest throughout Europe. Slim design means it can be carried easily in your pocket. (Accessory)

Sony audio system

Superb-sounding Sony CD audio system with MP3-compatibility delivers an unparalleled listening experience. Features include 'Keycode' anti-theft coding, four premium speakers and steering column-mounted remote controls. Standard on ST, optional on all other models at extra cost.

DIN-sized radio bezel and CD box

DIN adaptor with optional CD box provides a perfect fit for all DIN-sized equipment. (Accessory). CD box offers storage for the navigation disc and your favourite music. (Accessory, only in combination with DIN-sized radio bezel)

Make sure you're fully equipped

Whether you're carrying extra luggage or towing a trailer, Ford Fiesta offers a range of options and accessories to suit your needs.

Option = Can only be ordered with your new vehicle (at extra cost).
Accessory = Available from your Ford Dealer (at extra cost).

Thule roof box

Designed to carry a wide variety of loads and protect them from weather and theft. (Accessory, available in various sizes)

Base load carrier

The lockable base load carrier is compatible with a wide range of attachments such as roof boxes, bike carriers and ski carriers. (Accessory)

Contoured mudflaps

Available as sets for front or rear, these practical, hard-wearing mudflaps help protect the bodywork from stone chips, helping to keep your Fiesta clean by minimising road spray. (Accessory) Not available for Zetec S or ST



Thule ProRide Bike carrier

Easy to fit and use, this adjustable, lockable bike carrier can accommodate bike frames from 20-80 mm diameter, and attached easily to the Ford base load carrier. (Accessory)



ClimAir wind deflector

Wind deflectors minimise turbulence and so allow you to enjoy your drive with the front windows down, even when it's raining. (Accessory)



Fog light kit

Cut through the gloom with a stylish front fog light kit. (Accessory)



Rear parking sensor

An audible warning helps you safely judge the distance between the rear of your car and an obstacle for easier parking and manoeuvring. (Option and Accessory)



Tow bar with electrical kit

Fixed tow bar with 7-pin or 13-pin electrical kit. Can tow up to 900 kg, depending on engine. (Option and accessory)

Britax Römer child seats

Provides optimum all-round protection and comfort. Various seats are available for all ages. Removable and washable cover. (Accessory)

ClimAir® sunblind

Reduces glare from the sun. Can also be used with the window open to prevent insects entering the vehicle. Tailored to fit the rear windows and adds the distinctive look of privacy glass. (Accessory 5 door only)



Details that make a big difference

Personalise your new Ford Fiesta, with a range of stylish and practical options and accessories for the perfect finishing touch.



Interior styling
A unique, sporty gearshift knob (Option and Accessory) and handbrake cover (Option) with aluminium effect inserts gives Fiesta's interior a sporty yet elegant look.



Scuff plates
Refine and protect your vehicle with these different scuff plates with Ford logo. Choose between polycarbonate with 3-dimensional logo (far left) or brushed-aluminium version (left) (Option and accessory)



Bumper load protection foil and anti-slip mat
The protection foil helps to keep your bumper free from scratches whilst the waterproof anti-slip mat reduces sliding of loose items as well as protecting your luggage compartment from dirt, wear and tear. (Accessory)



Premium velour carpet floor mats
Featuring the Fiesta logo. Driver's mat is fixed to prevent slippage. (Accessory)

The icing on the cake

You'll love your Ford Fiesta. So why not show how proud you are of your feisty friend by treating yourself to an original Ford Boutique item?



Ford Boutique watch
Classic analogue ladies' watch with stainless steel strap. Gift-boxed. Order code F06-11-25



Ford Boutique sunglasses
When the sun's dazzling, dazzle it right back with these stylish Ford Boutique sunglasses. Suitable for men and women.



Ford Boutique key ring
Stylish and useful key ring finished with metal and leather-look loop. Order code F06-25-26



Ford Boutique CD case
Keep your favourite tunes close at hand with this sun visor-mounted CD holder. Holds 10 CDs. Order code F06-22-74

Exterior dimensions

	3-door	5-door
Exterior (mm)		
Overall length	3918 /3924*/3922**	3918/3924*
Overall width without mirrors	1685	1685
Overall width with mirrors	1907/1912*/1912**	1907/1912*
Overall height (laden)	1429	1432
Overall height (unladen)	1468	1464
Wheelbase	2486	2486
Front track	1464-1477	1464-1474
Rear track	1434-1444	1435-1444
*Ghia/**Zetec S / ST		

Interior dimensions

	3-door	5-door
Front (mm)		
Effective headroom (without sunroof)	995	999
Effective headroom (with sunroof)	960	963
Maximum effective leg room	1058	1058
Shoulder room	1345	1355
Rear (mm)		
Effective headroom	951	959
Minimum effective leg room	885	885
Shoulder room	1355	1300
Stowable luggage (cu m)†		
5-seat mode	0.268	0.284
2-seat mode (laden to belt line)	0.619	0.613
2-seat mode (laden to roof)	0.945	0.947

†Measured using the VDA method. Dimensions may vary dependent on the model and equipment fitted.

Engine data

	Engine technical features	Maximum power ^º	Maximum torque ^º
1.25 Duratec 1242 cc	4 cylinders in line; DOHC; 16 valves; alloy cylinder head and block; electronic multipoint fuel injection; electronic throttle	55 kW (75 PS) at 6000 min ⁻¹ (rpm)	110 Nm at 4000 min ⁻¹ (rpm)
1.4 Duratec 1388 cc	4 cylinders in line; DOHC; 16 valves; alloy cylinder head and block; electronic multipoint fuel injection; electronic throttle	59 kW (80 PS) at 5700 min ⁻¹ (rpm)	124 Nm at 3500 min ⁻¹ (rpm)
1.6 Duratec 1596 cc	4 cylinders in line; DOHC; 16 valves; alloy cylinder head and block; electronic multipoint fuel injection; electronic throttle	74 kW (100 PS) at 6000 min ⁻¹ (rpm)	146 Nm at 4000 min ⁻¹ (rpm)
2.0 Duratec 1999 cc	4 cylinders in line; DOHC; 16 valves; alloy cylinder head and block; electronic multipoint fuel injection	110 kW (150 PS) at 6000 min ⁻¹ (rpm)	190 Nm at 4500 min ⁻¹ (rpm)
1.4 Duratorq TDCi Diesel 1399 cc	4 cylinders in line; SOHC; 8 valves; alloy cylinder head and block; direct injection with high-pressure, common-rail, multipoint fuel injection system; turbocharger; electronic throttle	50 kW (68 PS) at 4000 min ⁻¹ (rpm)	160 Nm at 2000 min ⁻¹ (rpm)
1.6 Duratorq TDCi Diesel 1560 cc	4 cylinders in line; DOHC; 16 valves; alloy cylinder head and block; direct injection with high-pressure, common-rail, multipoint fuel injection system; turbocharger with intercooler; electronic throttle	66 kW (90 PS) at 4000 min ⁻¹ (rpm)	204 Nm at 1750 min ⁻¹ (rpm)

º Tested in accordance with ISO 1585.

Transmission data

	Transmission technical features
Durashift manual 5-speed	Floor-mounted gearlever; hydraulic driver operated clutch
Durashift EST advanced manual 5-speed	Electronic Shift Transmission (EST); Floor-mounted gearlever; hydraulic computer automated clutch with no clutch pedal; sequential manual mode with tip-up/tip-down gear changing; automated mode with kickdown function and hill climb and descent sensing
Durashift automatic 4-speed	Floor-mounted gearlever; fully automatic operation with torque converter; optional manual selection of 1st and 2nd gears; 4th gear lock-out switch; kickdown function; hill climb and descent sensing

Petrol engines

Super-smooth 1.25, 1.4 and 1.6-litre Duratec 16-valve engines reinforce Fiesta's fun-to-drive character.



1.4 Duratorq TDCi

The new-generation 1.4-litre Duratorq TDCi turbo diesel engine uses the latest common-rail injection technology to deliver impressive levels of torque and refinement as well as outstanding fuel economy.



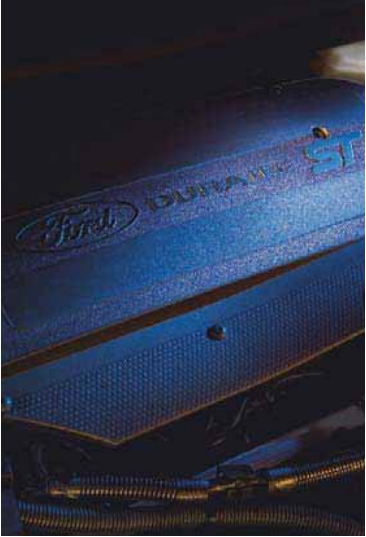
1.6 Duratorq TDCi

The high-output 1.6-litre 16V Duratorq TDCi diesel engine delivers improved performance at higher speeds. Its low-weight, all-alloy construction also helps to ensure excellent fuel economy.



2.0 Duratec petrol engine

Topping Ford Fiesta's engine range is the powerful 2.0-litre 150 PS Duratec petrol engine, available with the sporty Fiesta ST.



Fuel, performance and emissions

	CO ₂ emissions (g/km)**	Fuel consumption L/100 km (mpg)**			Performance*		0-60 mph (secs)
		Urban	Extra Urban	Combined	Max. speed kph (mph)		
3/5-door Fiesta					3-door	5-door	
1.25 Duratec (75 PS) Euro IV	139	8.2 (34.4)	4.7 (60.1)	6.0 (47.1)	163 (101)	163 (101)	13.6
1.4 Duratec (80 PS) Euro IV	147	8.3 (34.0)	5.6 (50.4)	6.2 (45.6)	166 (103)	167 (104)	12.3
1.4 Duratec (80 PS), Durashift EST advanced manual transmission Euro IV	142	7.7 (36.7)	4.9 (57.6)	6.0 (47.1)	166 (103)	168 (104)	13.7
1.6 Duratec (100 PS) Euro IV	153	8.8 (32.1)	5.1 (55.4)	6.4 (44.1)	184 (114)	183 (114)	10.2
1.6 Duratec (100 PS) (Zetec S) Euro IV	154	8.8 (32.1)	5.2 (54.3)	6.5 (43.5)	184 (114)	n/a	9.9
1.6 Duratec (100 PS), Durashift automatic transmission Euro IV	176	10.2 (27.7)	5.8 (48.7)	7.4 (38.2)	179 (111)	179 (111)	11.0
2.0 Duratec (150 PS) Euro IV	177	10.4 (27.2)	5.7 (49.6)	7.4 (38.2)	208 (129)	n/a	7.9
1.4 Duratorq TDCi (68 PS) Euro IV	119	5.8 (48.7)	3.8 (74.3)	4.5 (62.8)	163 (101)	164 (102)	14.4
1.6 Duratorq TDCi (90 PS) Euro IV	116	5.2 (54.3)	3.9 (72.4)	4.4 (64.2)	180 (112)	180 (112)	11.2

*In 4th gear. ^oFord test figures. ^{oo}All CO₂ emissions figures in g/km and fuel consumption figures in L/100 km are from officially approved tests in accordance with EEC Directive 1999/100/EC. The CO₂ emissions and fuel consumption test figures shown in the chart do not express or imply any guarantee of the emissions or fuel consumption of a car of the class in question. All the figures are based on tests conducted on vehicles with standard wheels and tyres; optional or accessory wheels and tyres may have an effect on the emissions and fuel consumption of a vehicle. **Note:** All vehicles are Durashift 5-speed manual unless otherwise stated.

Insurance groups

	Studio	Style	Style Climate	Zetec Climate	Zetec S	ST	Ghia
3/5-door Ford Fiesta							
1.25 Duratec (75 PS)	3E	4E	4E	4E			
1.4 Duratec (80 PS)		5E	5E	5E			5E
1.4 Duratec (80 PS), Durashift EST advanced manual transmission				5E			
1.6 Duratec (100 PS)					7E		7E
1.6 Duratec (100 PS), Durashift automatic transmission		7E	7E				7E
2.0 Duratec (150 PS)						13E	
1.4 Duratorq TDCi (68 PS)	4E	5E	5E	5E			5E
1.6 Duratorq TDCi (90 PS)				6E	6E		6E

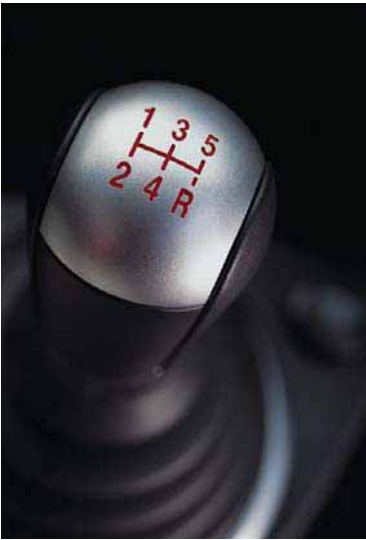
Model availability, weights and loads

	Kerbweights (kg)*						Gross Vehicle	Max. braked
	Studio	Style	Zetec Climate	Zetec S	ST	Ghia	Mass (kg)	towing limit at GVM (kg)
3-door Ford Fiesta								
1.25 Duratec (75 PS)	1096	1103	1103				1520	600
1.4 Duratec (80 PS)		1102	1102			1112	1520	900
1.4 Duratec (80 PS), Durashift EST advanced manual transmission			1108				1525	500
1.6 Duratec (100 PS)				1128			1520	N/A
1.6 Duratec (100 PS), Durashift automatic transmission		1130					1570	900
2.0 Duratec (150 PS)					1165		1590	N/A
1.4 Duratorq TDCi (68 PS)	1132	1139	1139				1560	750
1.6 Duratorq TDCi (90 PS)			1155	1178			1610/1605**	750/N/A**
5-door Ford Fiesta								
1.25 Duratec (75 PS)	1102	1109	1109				1530	600
1.4 Duratec (80 PS)		1108	1108			1118	1530	900
1.4 Duratec (80 PS), Durashift EST advanced manual transmission			1114				1540	500
1.6 Duratec (100 PS)						1121	1540	750
1.6 Duratec (100 PS), Durashift automatic transmission		1136				1146	1570	750
1.4 Duratorq TDCi (68 PS)		1145	1145			1156	1570	750
1.6 Duratorq TDCi (90 PS)			1161			1172	1615	750

^oRepresents the lightest kerbweight assuming full fluid levels, 90% fuel levels and 75 kg allowance for the driver, subject to manufacturing tolerances and options, etc., fitted. **Key:** This table shows the availability of engine and gearbox combinations on Ford Fiesta models and their resulting kerbweights. All vehicles are Durashift 5-speed manual unless otherwise stated. **Towing limits** quoted represent the maximum towing ability of the vehicle at its Gross Vehicle Mass to restart on a 12 percent gradient at sea level. The performance and economy of all models will be reduced when used for towing. **Roof rack load** is a maximum of 75kg on all models.
**Zetec S

Manual transmission

The super-smooth Durashift 5-speed manual transmission comes as standard across the range, giving you incredibly responsive gearshifting for ultimate control.



Durashift automatic transmission*

Ford Fiesta now comes with the choice of a highly responsive, fully automatic transmission, delivering the level of refinement normally associated with larger premium cars.

*Available on 1.6 petrol engines only.



Durashift EST advanced manual transmission

Durashift EST (Electronic Shift Technology)* offers you the best of both worlds. It removes the need for a clutch pedal, offering you a sporty, sequential manual mode, plus an optional automated mode so you can relax and let the transmission change gear for you in built-up traffic.

*Available on 1.4 petrol engines only.



Mechanical features

	Studio	Style	Zetec Climate	Zetec S	ST	Ghia
Brakes						
Diagonally-split, with dual-line servo-assistance. Front discs, rear drums	●	●	●	●		●
Diagonally-split, with dual-line servo-assistance. Front and rear discs					●	
Anti-lock brakes (ABS)	●	●	●	●	●	●
Electronic Stability Program (ESP) - includes Anti-lock brakes (ABS) and Emergency Brake Assist (EBA)	□	□	□	□	□	□
Fuel tank						
Useable capacity – Petrol – 45 litres, Diesel – 43 litres	●	●	●	●	●	●
Fuel cut-off – Inertia switch (petrol only)	●	●	●	●	●	●
Steering						
Rack-and-pinion	●	●	●	●	●	●
Power-assisted	●	●	●	●	●	●
Steering column – Tilt-adjustable	●	●	●	●	●	●
Suspension and body						
Front – Independent with MacPherson struts, and subframe-mounted 'L' arm. Anti-roll bar	●	●	●	●	●	●
Rear – Twist-beam with coil springs	●	●	●	●	●	●
Towing eyes – Detachable front and welded rear	●	●	●	●	●	●
Transmission						
Durashift 5-speed manual transmission	●	●	●	●	●	●
Durashift EST 5-speed advanced manual transmission (1.4 petrol only)			○			
Durashift 4-speed automatic transmission (1.6L petrol only)		○				○
Turning circle						
Kerb to kerb 9.3 m	●	●	●	●		●
Kerb to kerb 11.4 m					●	

● = Standard, ○ = Optional, at extra cost, □ = Part of option pack, at extra cost.

Safety and security features

	Studio	Style	Zetec Climate	Zetec S	ST	Ghia
Safety						
Airbags – Driver’s and front passenger’s*	●	●	●	●	●	●
Airbag – Front passenger’s airbag de-activation switch* (Dealer-fitted option only)	○	○	○	○	○	○
Airbags – Front side impact airbags and side curtain airbags, deployed from the headlining	□	□	□	□	□	□
Anti-lock brakes (ABS) with Electronic Brake-force Distribution (EBD)	●	●	●	●	●	●
Heavy braking hazard warning lights			●	●	●	●
Fuel cut-off – Inertia switch (petrol only)	●	●	●	●	●	●
Seat belts – Front, inertia reel, with grabbers, pre-tensioners and, on 5-door, height-adjustable mounts	●	●	●	●	●	●
Seat belts – Rear, three inertia reel lap and diagonal	●	●	●	●	●	●

Safety and security features

	Studio	Style	Zetec Climate	Zetec S	ST	Ghia
Side impact door beams, front and rear. Steel safety cage with engine compartment cross beam. Energy absorbing crumple zones, front and rear	●	●	●	●	●	●
Steering column – Additional bracing	●	●	●	●	●	●
Security						
Home-safe lights	●	●	●	●	●	●
Alarm – Perimeter		○	○	●		●
Alarm – Interior sensing (Thatcham Category 1 approved)					●	
Fuel cap – Locking with body colour flap	●	●	●	●	●	●
Immobiliser – Passive Anti-Theft System (PATS)	●	●	●	●	●	●
'Keycode' anti-theft coded audio equipment	●	●	●	●	●	●
Locks – High security, shielded with strengthened mountings, and, on 5-door only, childproof on rear doors	●	●	●	●	●	●
Locks – Remote tailgate release	●	●	●	●	●	●
Locks – Central locking	●					
Locks – Remote central, double locking with illuminated entry and greeting lights		●	●	●	●	●
Vehicle Identification Number (VIN) – Visible	●	●	●	●	●	●
Wheel nuts – Locking			●	●	●	●

● = Standard, ○ = Optional, at extra cost, □ = Part of option pack, at extra cost.
***Note: A child seat should never be placed in the front passenger seat when the Ford vehicle is equipped with an operational front passenger’s airbag. The safest place for children is properly restrained on the rear seat.**

Wheel availability

	Studio	Style	Zetec Climate	Zetec S	ST	Ghia
14" steel wheels (full-size spare) with full wheelcovers and 175/65 R14 Low Rolling Resistance (LRR) tyres	●					
15" steel wheels (14" 'temporary' steel spare* with 175/65 R14 Low Rolling Resistance (LRR) tyre) and 195/50 R15 tyres		●				
15" 5-spoke alloy wheels (14" 'temporary' steel spare* with 175/65 R14 Low Rolling Resistance (LRR) tyre) and 195/50 R15 tyres			●			
15" 6x2 spoke "machined" alloy wheels (14" 'temporary' steel spare* with 175/65 R14 Low Rolling Resistance (LRR) tyre) and 195/50 R15 tyres						●
16" 7-spoke 'silver' alloy sport wheels (14" 'temporary' steel spare* with 175/65 R14 Low Rolling Resistance (LRR) tyre) and 195/45 R16 tyres			○/□			
16" 7-spoke 'machined' alloy sport wheels (14" 'temporary' steel spare* with 175/65 R14 Low Rolling Resistance (LRR) tyre) and 195/45 R16 tyres			○			○
16" 7-spoke alloy wheels (14" 'temporary' steel spare* with 175/65 R14 Low Rolling Resistance (LRR) tyre) and 195/45 R16 tyres			○			○
16" 12-spoke alloy wheels (14" 'temporary' steel spare* with 175/65 R14 Low Rolling Resistance (LRR) tyre) and 195/45 R16 tyres				●		
17" 11-spoke alloy wheel with unique centre cap (15" temporary' steel spare* with 125/80 R15 Low Rolling Resistance (LRR) tyre) and 205/40 R17 tyres					●	

***Note:** If the spare wheel rim or tyre size differs from the other wheels fitted: DO NOT drive in excess of 80 km/h. DO drive the least possible distance.
● = Standard, ○ = Optional, at extra cost, □ = Part of option pack, at extra cost.
***Note: A child seat should never be placed on the front passenger seat when the Ford vehicle is equipped with an operational front passenger’s airbag. The safest place for children is properly restrained on the rear seat.**

Rigid body structure and safety cage

Beneath Ford Fiesta’s stylish lines is an ultra-stiff body structure that provides the foundation for its excellent directional stability and control. And, to give you the ultimate protection in the event of an accident, its highly protective steel safety cage incorporates a passenger compartment cross-car beam and energy-absorbing crumple zones, at both the front and rear.

Passenger airbag deactivation switch*

To help protect your tiniest passengers in the event of an impact, a key-activated switch enables you to turn off the front passenger airbag when carrying a rear-facing child seat in the front passenger seat. DO NOT place a rearward-facing child seat into the passenger seat location if this switch is not fitted. Available as a dealer-fit accessory (at extra cost).

Electronic Stability Programme (ESP)

The ESP system checks up to 150 times per second that the car is behaving as the driver intends. At the first sign of any deviation, it is designed to help restore stability and enable you to retain control. Available on selected models (at extra cost).

— Vehicle with ESP.

— Without ESP.

A Vehicle experiences understeer on approach.

B Vehicle experiences oversteer on exit to bend.

Exterior features

	Studio	Style	Zetec Climate	Zetec S	ST	Ghia
Styling						
Bodyside mouldings – Tapered, self colour	●	●		●		
Bodyside mouldings – Tapered, body colour			●		●	●
Bumpers – Body colour upper with self colour lower	●					
Bumpers – Full body colour		●	●			●
Bumpers – Sports styled body-colour, mesh grille and surround				●	●	
Door handles – Body colour			●		●	●
Paint – Metallic	○	○	○	○	○	○
Radiator grille – Black mesh upper and lower	●	●				
Radiator grille – Black mesh upper with chrome surround and mesh lower front grille			●			●
Tailgate lift handle – Body colour			●		●	●
Rear roof spoiler			●			
Aerodynamic rear roof spoiler				●	●	
Clear side indicators			●	●	●	●
Scuff plates					●	●
Functional						
Door mirrors – Manual internal control, black housings	●	●		●		
Door mirrors – Electrically-operated and heated, black housings		●+		□		
Door mirrors – Electrically-operated and heated, body colour housings			●	○	●	
Door mirrors - Electrically-operated and heated with Power-Fold, body colour housings			○ / □	○ / □	○ / □	●
Heated rear window	●	●	●	●	●	●
Tailgate release – Remote, on instrument panel	●	●	●	●	●	●
Tinted glass	●	●	●	●	●	●
Rear windows - Dark-tinted privacy glass	○	○	○	○	○	○
Quickclear - heated windscreen (standard Style Climate)			●	○/□	●	●
Locks - Anti-burst	●	●	●	●	●	●
Wheel arch liners – Front and rear	●	●	●	●	●	●
Wipers – Front, 2-speed, with programmable interval intermittent wipe and electric wash	●	●	●	●	●	●
Wipers – Front, delayed wipe after wash/wipe function	●	●	●	●	●	●
Wipers – Tailgate wiper, intermittent with electric wash	●	●	●	●	●	●
Wipers – Tailgate, reverse gear activation (when front wipers are in use)	●	●	●	●	●	●
Wipers - Automatic rain-sensing, with automatic headlamps		○	○ / □	○ / □	○ / □	●
Lights						
Halogen headlights, side lights, rear fog light, reversing light, high-mounted rear brake light	●	●	●	●	●	●
Headlight levelling	●	●	●	●	●	●
Fog lights – Front			●	●	●	●

● = Standard, ○ = Optional, at extra cost, □ = Part of option pack, at extra cost, ●+ = Standard Style Climate only

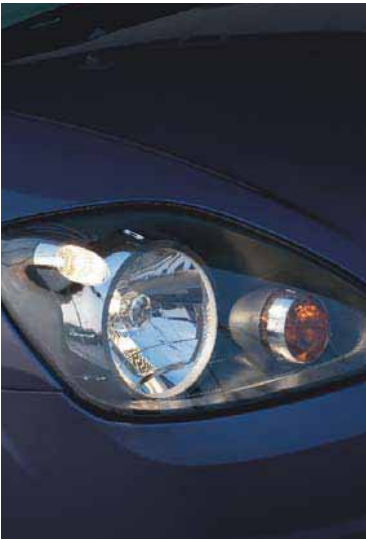
Audio and communication systems

	Studio	Style	Zetec Climate	Zetec S	ST	Ghia
Audio						
Stereo radio/cassette – RDS, 'Keycode' anti-theft coding, 4 speakers	●					
Stereo radio/CD – RDS, 'Keycode' anti-theft coding, 4 speakers		●	●	●		
Stereo radio/CD – RDS, with remote controls, 'Keycode' anti-theft coding, 4 speakers			□	□		●
Sony audio system - Sony CD - Stereo radio/CD/MP3, CD, RDS EON, MP3 compatibility, 'Keycode' anti-theft coding, 4 premium speakers (Not available with Satellite Navigation)		○	○	○	●	○
Music Connection Socket - Allows connection of a portable music player to the car's audio system (Not available with Durashift automatic transmission)	●	●	●	●	●	●
Radio navigation system - Bosch Blaupunkt TravelPilot EX, mp3 capability, 4" monochrome display	○	○	○	○	○	○
Bluetooth® Hands-Free and Voice Control System (system without cradle). Does not include mobile phone.	○	○	○	○	○	○

● = Standard, ○ = Option, at extra cost, □ = Part of option pack, at extra cost
The Bluetooth® word mark and logos are owned by the Bluetooth SIG, Inc. and any use of such marks by Ford Motor Company is under licence. Other trademarks and trade names are those of their respective owners.

Contemporary headlight design

Stylish headlight design gives Ford Fiesta its bright eyes and powerful illumination, enhancing its feisty character.



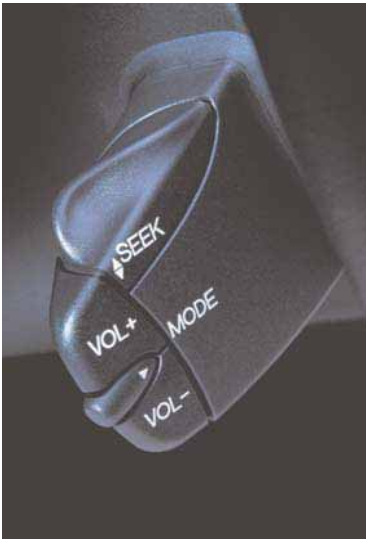
Expressive front grille

The striking front grille has an attractive, elevated shape to give Ford Fiesta a fresh face and distinctive smile. Standard on Zetec Climate and Ghia.



Remote audio controls

Selected models feature remote audio controls on a stalk attached to the steering column, so you can adjust the sound system without taking your eyes off the road.



Sony audio system

Superb-sounding Sony CD audio system with MP3-compatibility delivers an unparalleled listening experience. Features include 'Keycode' anti-theft coding, four premium speakers and steering column-mounted remote controls. Standard on ST, optional on selected models at extra cost.



Interior features

	Studio	Style	Zetec Climate	Zetec S	ST	Ghia
Comfort and convenience						
Accessory socket	●	●	●	●	●	●
Air conditioning – CFC-free with air recirculation (standard Style Climate)			●	●	●	●
Air conditioning - CFC-free with Electronic Automatic Temperature Control (EATC)		○*	○	○	○	○
Centre console – Long with cup holder	●	●	●	●	●	●
Clock – Digital, 12- or 24-hour function	●	●	●	●	●	●
Coat hooks – Two, rear	●	●	●	●	●	●
Glovebox with lid incorporating pen, cup and ticket holders	●	●	●	●	●	●
Mirror – Dipping rear-view	●	●	●	●	●	●
Pollen Filter	●	●	●	●	●	●
Smoker's Pack – Front ashtray and cigar lighter	○	○	○	○	○	○
Sunroof – Tilting and sliding, screened glass	○	○	○	○	○	○
Sunvisor – Driver's with covered mirror and ticket strap	●	●	●	●	●	●
Sunvisor – Passenger's with covered mirror	●	●	●	●	●	●
Windows – Front, electrically-operated		●	●	●	●	●
Windows - Driver's, electrically-operated with one touch lowering		●	●	●	●	●
Seats and seat belts						
Front seat – Driver's seat manual 2-way adjustment	●					
Front seat - Driver's seat manual 4-way adjustment		●	●	●	●	●
Front seats – Anti-submarining, fully reclining with height-adjustable head restraints	●	●	●	●	●	●
Front seats – Fold forward front seat backs (5-door only)	●	●	●			●
Front seats – Tip forward front seat backs (3-door only)	●	●	●	●	●	●
Front seats – Sport				●		
Front seats – Sport (ST branded)					●	
Storage pockets – Driver's seat and front passenger's seat backs, vinyl					●	●
Storage pockets – Driver's seat and front passenger's seat backs, fabric		●	●	●		
Rear seat – 60:40 split folding back	●	●	●	●	●	●
Rear seats – Head restraints on outer rear seats	●	●	●	●	●	●
Rear seat – Head restraint on centre seat	□	□	□	□	□	□
Seats – Fabric trim	●	●	●	●		○
Seats – Part-leather trim					●	
Seats – Full-leather trim				○		●
Seats – Full-leather trim, heated					○	

Interior features

	Studio	Style	Zetec Climate	Zetec S	ST	Ghia
Carpet and trim						
Carpet – Non-woven velour	●	●	●	●	●	●
Carpet Mats - front only					□	●
Door trim – Fabric insert, moulded panel with pull handle/armrest, front door bins and integrated speaker grilles	●	●	●			●
Gear lever gaiter – Black with satin aluminium gaiter surround			●	●	●	●
Gear knob – Black with acrylic insert	●	●				
Gear knob – Black with silver effect insert			●			
Gear knob – Sports				●		
Gear knob – Sports, leather-covered					●	
Gear knob – Leather-covered with silver effect insert						●
Gear shift – Black with gloss black acrylic insert and black gaiter surround insert (Durashift EST Advanced Manual Transmission only)			●			
Gear shift – Black with acrylic insert (Durashift Automatic Transmission only)		●				●
Instrument cluster, radio and heater control surrounds – Ebony and Black colour finish	●	●		●	●	●
Silver effect centre dashboard bezel			●	○	□	○
Instruments and controls						
Instruments – Speedometer, electronic digital engine temperature and fuel level gauges, tachometer and trip recorder	●	●	●	●	●	●
Warning indicators for oil pressure, direction indicators, glow plugs (diesel only), high beam, ignition/alternator, brake failure, handbrake on, airbag(s), low fuel level, 'lights on' audible warning	●	●	●	●	●	●
Illuminated heater controls – 4-speed fan. Four vents with temperature and direction control	●	●	●	●	●	●
Control stalks – Column-mounted for indicators and wash/wipe functions	●	●	●	●	●	●
Trip Computer with Vehicle Personalisation (Standard with Durashift EST)			●	●	●	●
Battery saver	●	●	●	●	●	●
Steering wheel – 3-spoke incorporating blue Ford oval and horn function	●	●				
Steering wheel – 3-spoke, leather-wrapped with silver effect spoke shell incorporating blue Ford oval and horn function			●	●		●
Steering wheel – 3-spoke sport, leather-wrapped incorporating blue Ford oval and horn function (ST branded)					●	
Lighting						
Courtesy light – Header-mounted, front door-operated (all door- and tailgate-operated on central locking models)	●	●	●	●	●	●
Courtesy light – 'Theatre-style' dimming		●	●	●	●	●
Map reading lights					●	●
Luggage compartment light	●	●	●	●	●	●
Luggage Compartment						
Rear parcel tray – Carpet-covered, tilting	●	●	●	●	●	●
Carpet on floor with sidewall and wheel arch trims	●	●	●	●	●	●

● = Standard, ○ = Optional, at extra cost, □ = Part of option pack, at extra cost. ○* = Optional, at extra cost, Style Climate only.

Large glovebox

With handy pen and ticket holders, purpose-built coin slots, and even a place for your handbook, Ford Fiesta's spacious glovebox has a place for everything.



Luggage space

Ford Fiesta's generous boot is both deep and wide, allowing you to carry everything from suitcases to flat-pack furniture.



Music Connection Socket*

Ford Fiesta lets you connect your own MP3, personal CD or cassette player, outputting high-quality sound via its audio unit and car speakers. Not available with Durashift automatic.

* Does not include MP3 player or lead.



Air conditioning

On hot days you can stay cool and comfortable in your Ford Fiesta, thanks to its air conditioning system. Standard on selected models.



Option packs

	Studio	Style	Zetec Climate	Zetec S	ST	Ghia
Reflex Pack – Front side impact airbags and side curtain airbags (deployed from the headlining) and rear centre head restraint	⊖	⊖	⊖	⊖	⊖	⊖
Smoker's Pack – Front ashtray and cigar lighter	⊖	⊖	⊖	⊖	⊖	⊖
Visibility Pack – Quickclea' heated windscreen and electrically-operated and heated door mirrors				⊖		
Airbag – Front passenger's airbag de-activation switch* (Dealer-fit accessory only)	⊖	⊖	⊖	⊖	⊖	⊖
Electronic Stability Programme (ESP). Must be ordered with Reflex Pack at extra cost.	⊖	⊖	⊖	⊖	⊖	⊖
Rain sensing wipers and Automatic headlamps		⊖	⊖	⊖	⊖	
Rear parking distance sensor	⊖	⊖	⊖	⊖	⊖	⊖
Towbar – Fixed	⊖	⊖	⊖			⊖
Interior Styling Pack – Silver dashboard bezel and colour co-ordinated mats (Not available with Satellite Navigation)					⊖	
Silver centre dashboard bezel				⊖	⊖	⊖
Technology Pack - Rain sensing wipers and automatic headlamps, power-fold door mirrors, second remote key and remote controls for radio/CD			⊖	⊖	⊖	
Sport Pack - 16" 7-spoke 'silver' sport alloy wheels (14" 'temporary' steel spare [†] with 175/65 R14 Low Rolling Resistance (LRR) tyre) with 195/45 R16 tyres and Dark-tinted Privacy Glass			⊖			
Exterior Styling Pack – Over the top stripes (Not available with sunroof)					⊖	
Exterior Styling Pack – Side stripes on doors					⊖	
Exterior Styling Pack – Over the top and side door stripes (Not available with sunroof)					⊖	
Bluetooth® Hands-Free and Voice Control System (system without cradle). Does not include mobile phone.	⊖	⊖	⊖	⊖	⊖	⊖

⊖ = Option, at extra cost
***Note: A child seat should never be placed in the front passenger seat when the Ford vehicle is equipped with an operational front passenger's airbag. The safest place for children is properly restrained on the rear seat.**