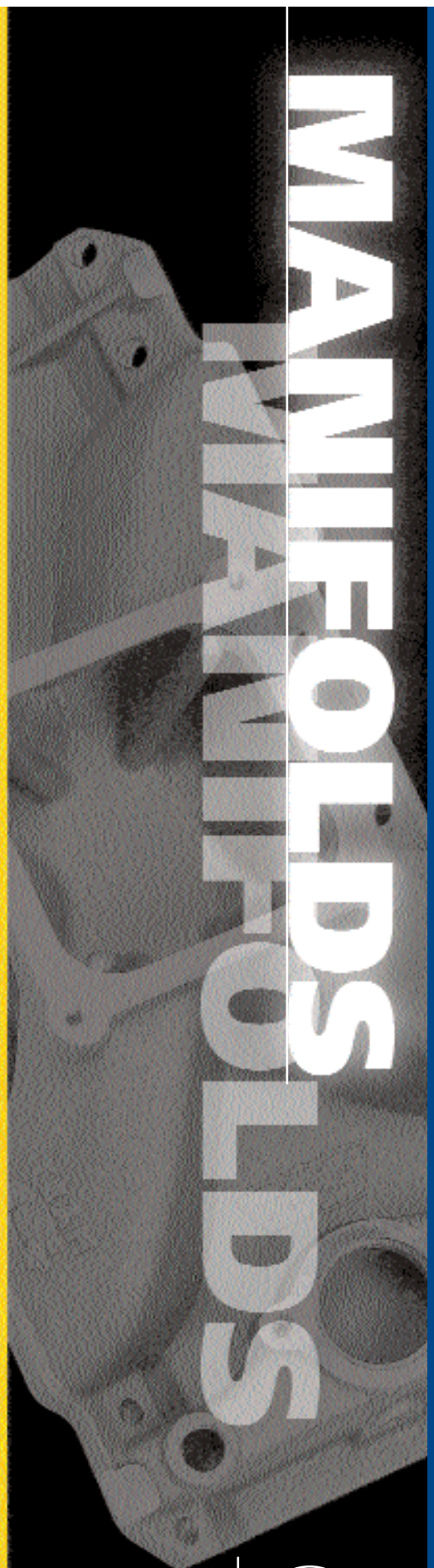
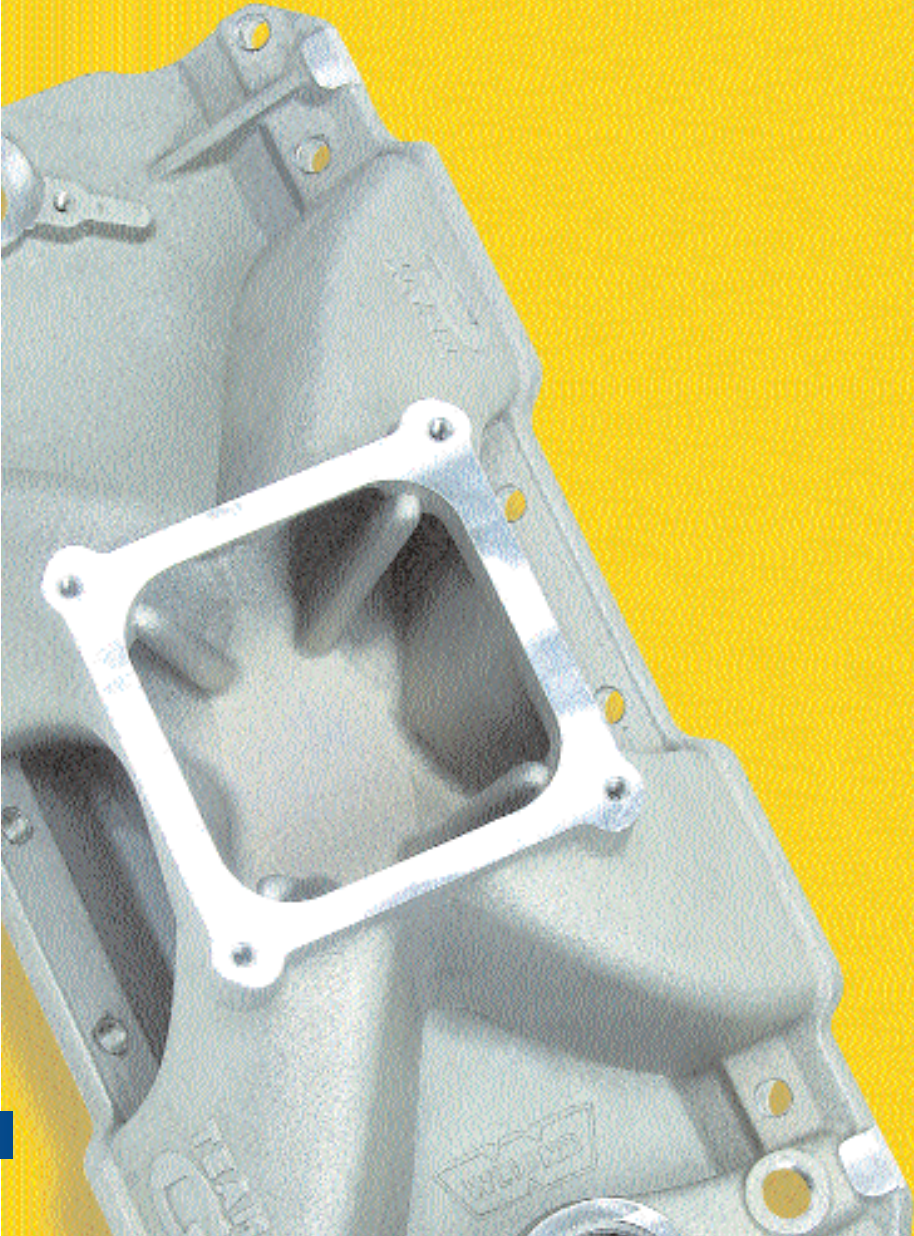


SECTION	PAGE
<b>TECHNICAL INFORMATION</b> . . . . .	6-8
<b>BUICK V6</b> . . . . .	9
<b>CHEVROLET</b>	
Small Block V8 . . . . .	10-23,26
LS1 & LS6 V8 . . . . .	24-25,26
Big Block . . . . .	26-32
<b>CHRYSLER</b>	
Small Block V8 . . . . .	32,33
Early Hemi V8 . . . . .	33
Big Block V8 . . . . .	34-35
<b>FORD</b>	
Small Block V8 . . . . .	36-39
351W V8 . . . . .	39,40
351C V8 . . . . .	40
351M, 400 V8 . . . . .	41
FE Big Block V8 . . . . .	41
429, 460 V8 . . . . .	41,42
<b>ACCESSORIES</b> . . . . .	43-48



# MANIFOLDS

## Manifold Classifications & Tech



**ACTION  
+PLUS**  
P/N 8120



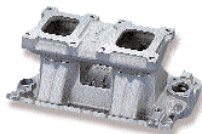
**STEALTH**  
P/N 8150

**X-CEerator**  
P/N 7547-1



**TEAM  
G**  
P/N 7622

**Hi-Ram**  
P/N 1984



**STEALTH  
RAM**  
P/N 7542P

**AIR  
RAM**  
INTAKE MANIFOLD  
P/N 300-111P



**Street  
Dominator**  
P/N 300-64

**Street  
Dominator**  
P/N 300-14



**Holley  
EFI**  
P/N 9901-209

## MANIFOLD CLASSIFICATIONS

Below is a listing of the different styles and series of manifolds offered by Weiland. The information listed will help you decide which manifold will suit your particular application and needs.

**ACTION PLUS™ SERIES:** 180°, low-rise dual-plane manifold designed as a stock replacement manifold with improved power and torque characteristics. The effective rpm range of this style manifold is off idle through approximately 5500 rpm. Carburetor mounting pads are available to accept either a stock or aftermarket carburetor.

**STEALTH™ SERIES:** WEIAND's top-of-the-line high-rise dual plane manifold combines the low-end throttle response of a 180-degree design with the top-end power you'd expect of a single plane. Extensive dynamometer testing confirms that "Stealth" is the ultimate dual plane on the market, with a power range from 1500 through 6700 RPM. Best suited for engines that are equipped with aggressive camshaft profiles, headers, high performance ignition systems etc. Features square-bore carburetor pad for aftermarket 4-barrel carburetors.

**X-CEerator™ SERIES:** 360°, single-plane, open plenum manifold designed primarily for high-performance street, drag, marine and oval track use. With an effective rpm range of 2000 to 6500 rpm, this series works best with a higher compression ratio, 280° or more of cam duration and headers with 1-5/8" primary tubes. Being a mid-to-high-rpm manifold, a standard transmission, or an automatic transmission with a 3000 rpm stall converter, is highly recommended. The carburetor mounting pad is designed to accept current performance aftermarket carburetors. The WEIAND X-CEerator Series is the ultimate street/strip performance manifold for single 4V applications where increased torque and power is required in the mid and high rpm ranges.

**TEAM G™ SERIES:** Manifolds are a 360° single-plane, open plenum design developed for competition in drag racing, oval track and performance applications. The effective rpm range is 2000-8500 rpm. By port matching the manifold to the cylinder heads, the rpm range can usually be raised by 200-800 rpm. For best results, the use of headers and a performance ignition system is highly recommended. The TEAM G is the premier competition manifold for single 4V applications.

**HI-RAM® SERIES:** Manifolds are used primarily in drag racing, tractor/truck pulls and performance marine applications where high rpm is required. The effective rpm range will be between 2,500 to 10,000 rpm, depending on specific model and application. The WEIAND Hi-Ram, with its patented D-shaped port runners and large plenum chamber, provides optimum thrust of the air/fuel mixture to the cylinder head intake ports. For maximum performance in a normally aspirated competition application, the WEIAND Hi-Ram Series is the manifold of choice!

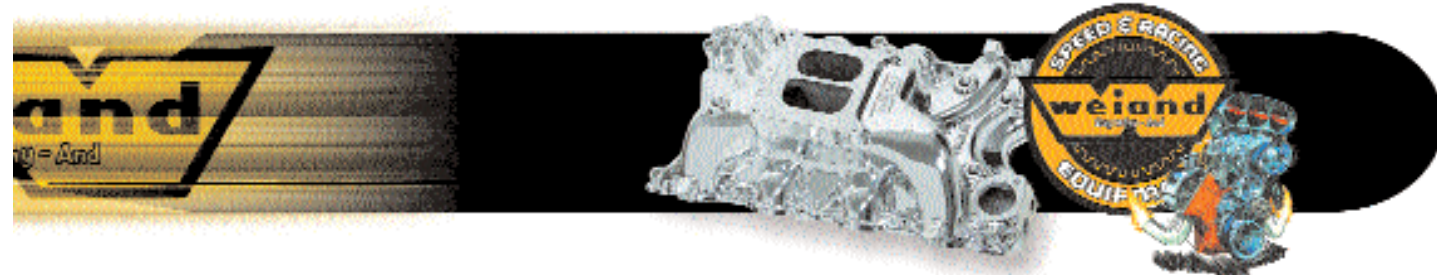
**STEALTH RAM™ SERIES:** The Stealth Ram intake manifolds are designed with an aggressive, sophisticated look for today's EFI engines. Patterned after a tunnel ram style tuned port intake, The Stealth Ram™ offers exceptional horsepower and torque over a conventional intake. Manifolds can be retro-fitted into L-98 powered vehicles with a minimum of modifications and tuning or they can be purchased complete as part of a Holley Commander 950™ EFI System.

**AIR RAM™ EFI SERIES (LONG RUNNER STYLE):** Designed for the 5.0L Ford and LS series families, these intakes pick up where the factory left off. Engineered to build horsepower and torque through optimized plenum and runner designs, these manifolds offer builders the ability to port match to larger heads and throttle bodies as well as withstand higher boost pressures and tapping necessary for NOS nitrous nozzles.

**STREET DOMINATOR® SERIES (DUAL PLANE):** Holley dual plane Street Dominator manifolds are designed as stock replacement intake for increased power and torque on engines primarily designed for street and towing use. The divided plenum design offers exceptional low and mid range torque perfect for heavier vehicles. Street Dominator dual plane manifolds are designed for use in the idle to 5500 RPM range.

**STREET DOMINATOR® SERIES (SINGLE PLANE):** The Holley single plane Street Dominator series was designed for use in the idle to 6000 RPM range. Engineering designed these intakes to make maximum peak power without sacrificing the low end torque normally only associated with dual plane designs. Large plenum volumes and optimized runners make these ideal manifolds for use on stock and mildly modified engines.

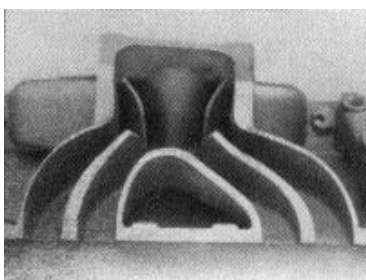
**EFI SERIES (SINGLE PLANE):** Traditional single plane street/strip manifolds are designed with all the necessary provisions for MPFI including Fuel Injector Bung and Rail Mounts. These can be utilized to build custom, one-off EFI systems or purchased complete as a part of a Holley Commander 950 EFI system. Designed for operation in the 2500 to 6000 RPM range depending on engine size and port configuration.



## MANIFOLD TECHNICAL INFORMATION

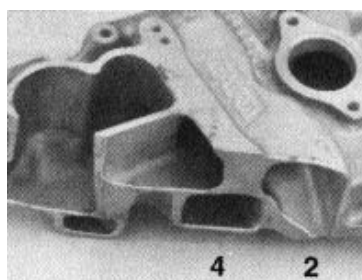
### ABOUT MANIFOLD TERMINOLOGY

By terms of definition, there are two basic configurations for V-8 intake manifolds: single and dual plane. The dual plane, 180° designs feature a multi-level plenum design that essentially separates adjacent intake pulses by alternating planes, while the single plane, 360° models feed all cylinders through a single plenum. The plenum is the large chamber underneath the carburetor mounting pad(s), while the runners (or ports) direct the intake charge to each individual cylinder. Dual plane manifolds are preferred for street applications (especially vehicles equipped with automatic transmissions) because of a stronger individual carburetor "signal" that provides improved bottom-end performance. By virtue of a less restrictive, more direct design the single plane is superior for top-end performance.



#### Single Plane Cut-Away

All cylinders draw from the same common place

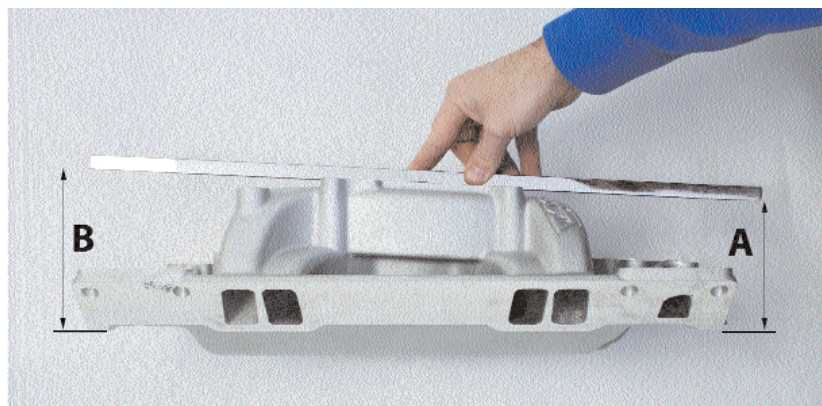


#### Dual Plane Cut-Away

Note that adjacent cylinders 2 & 4 draw from different, isolated areas.

### DETERMINING MANIFOLD HEIGHT

The manifold height measurements "A" (front) and "B" (rear), shown in the illustration below, are determined in the following manner. Lay a straight edge across the carburetor mounting pad. The measurements are taken from the manifold front and rear end seal surfaces to the bottom of the straight edge. To ensure adequate hood clearance, check the stock manifold height in the same manner and compare with the dimensions listed for the particular manifold of your choice.



# MANIFOLDS

## Manifold Finishes & Buick V6

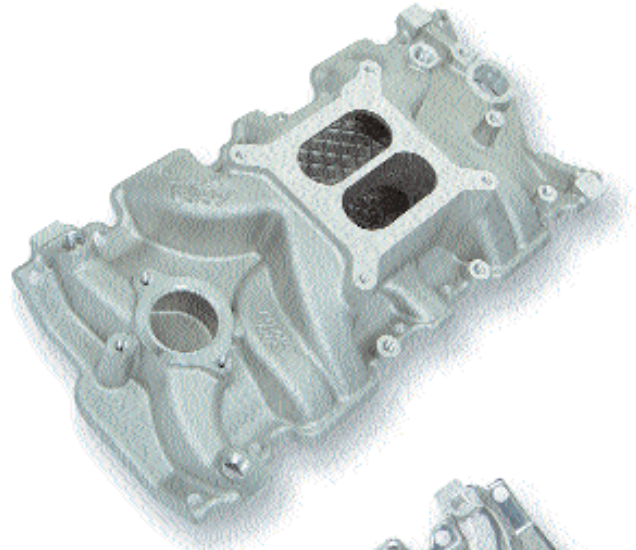


INTAKE MANIFOLDS

# MANIFOLD FINISHES

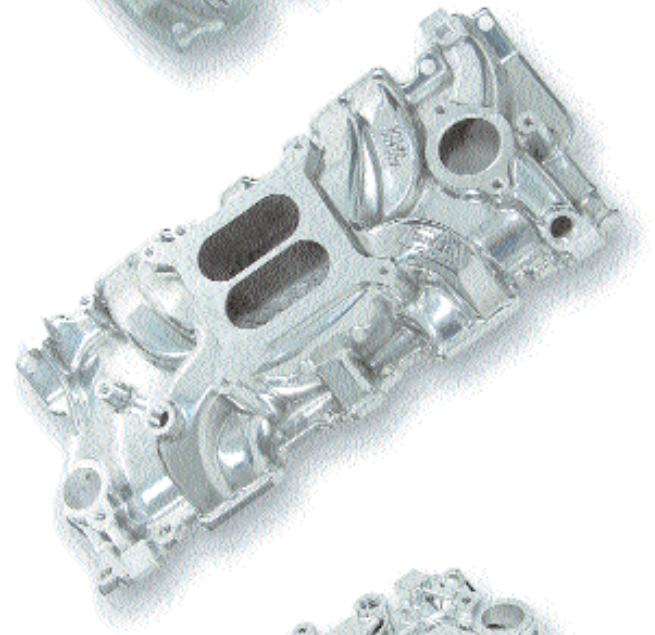
### Satin (Natural)

Weiland takes great pride in its satin finish (as cast) manifolds. Extra care is taken during the casting process to assure a uniform finish with no mold lines or seams. Then each manifold is steel shot-blasted to deliver an even surface texture and a clean silver finish. Satin manifolds are the perfect choice for those looking for that classic power look!



### Polished

Need a hand polished manifold to compliment your engine compartment? Weiland now offers our most popular intakes hand polished! Attention to detail is the name of the game in polished components and Weiland knows that. Each manifold is carefully polished and then examined for consistency of finish and polishing of hard to reach spots. Compare our prices to the competition and the choice will be simple!



### Everbright™

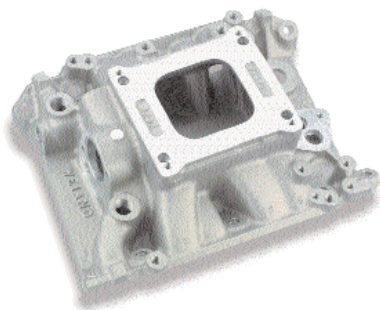
Want the ultimate in shine? Check out Weiland's new Everbright™ finish manifolds. They look better than show polished aluminum, but without the dreaded, constant polishing. To begin the coating process each manifold is sprayed with an epoxy surface filler that covers any pores from the casting process. Once the filler is cured, the manifolds are put through a vacuum metalizing process. Each manifold is placed into a vacuum chamber where aluminum is vaporized and applied to the manifold with an electrostatic charge. When the smoke clears, a clear powder-coat is applied to seal the manifold and provide an added depth to the shine! The latest in coating technology!





## BUICK V6

Part #



196-198 (3.2L) V6, 225 (3.7L) V6,  
231 (3.8L) V6, 252 (4.1L) V6

**7541**<sup>(D)</sup> 

### HOLLEY CARBURETOR RECOMMENDATIONS

0-8007 (390 CFM) or 0-80457S (600 CFM)

### INSTALLATION

Supplied w/ P/N 7471 carburetor top plate. Use 1979 and later style intake manifold gaskets, such as Fel-Pro 1200. Utilizes stock Buick thermostat housing.

### SPECIFICATIONS

Height - frt. 4.43", rr. 4.75". Shipping weight is 16 lbs.  
Port Size: 1.70" height; 0.93" width

### Features

- Single plane w/open plenum
- 1500-6800 RPM power band
- EGR provision
- Square flange carburetor mounting

# X-CEerator



**LOOK FOR THE WEIAND/HOLLEY RACE TRAILER  
AT 35+ CONSUMER EVENTS EACH YEAR TO GET  
THE LATEST PRODUCT INFORMATION!**

(D) Not legal for street use with a 4-barrel carburetor in California.

  or  See page 4 for symbol explanation.

Tech Line: **270-781-9741**

# MANIFOLDS

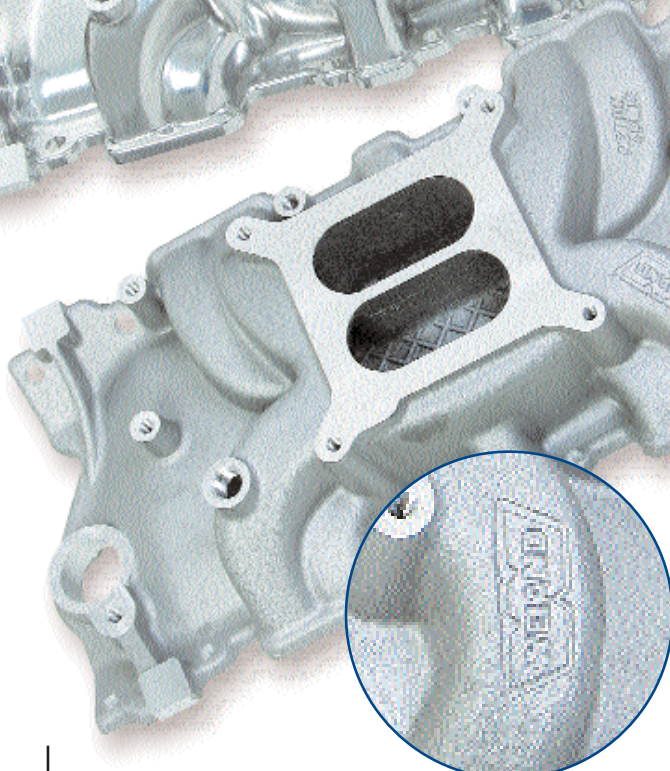
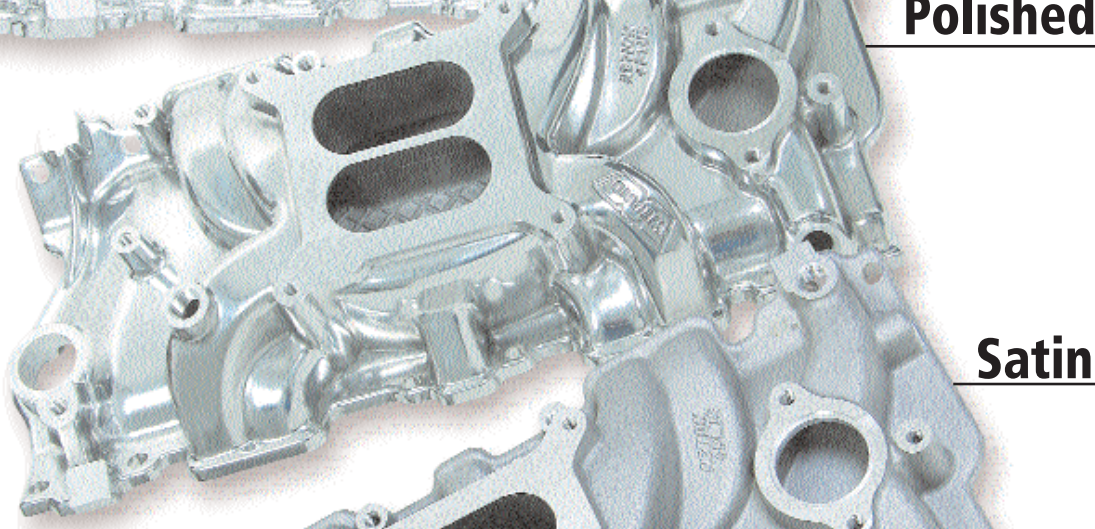
Action Plus™ - Small Block Chevrolet



**NEW!**

## ACTION PLUS™ INTAKE MANIFOLDS - CHEVROLET SMALL BLOCK V8

**EVERBRIGHT™**  
COATED

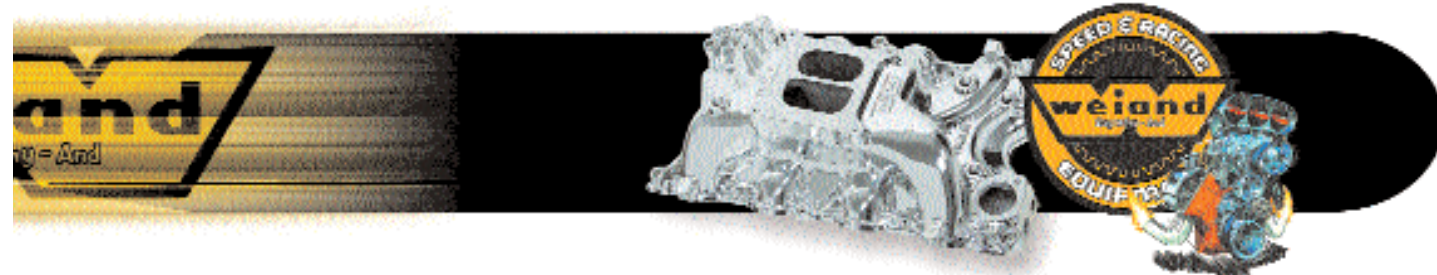


**ACTION  
+ PLUS**

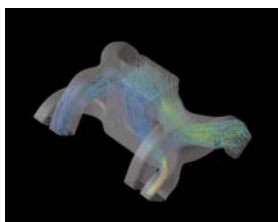
INTAKE MANIFOLDS

10

[www.weiand.com](http://www.weiand.com)



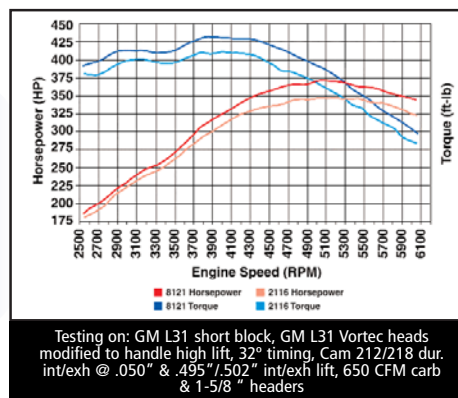
# ACTION +PLUS



Completely new designs optimized for today's bigger engines! Industry leading Computational Fluid Dynamics (CFD) airflow design software utilized for optimized air/fuel distribution and power.

Looking for the ultimate in high performance street intakes? A lot has changed in the performance world since many of the manifolds on the market today were introduced 20+ years ago. Typical engines used to be 283 to 327 cubic inches. Not so anymore. With the popularity of larger stroker engines and more efficient cylinder head/cam designs has come a need for manifolds to support these larger displacements. Weiland recognized this and has developed a new line of Action Plus™ manifolds designed with Computational Fluid Dynamics (CFD) to generate maximum horsepower and torque out of today's engines. Don't believe it? Check out the dyno chart to see what you're missing under your hood. Want to compare us to the competition? When you see the power, quality and value pricing of Weiland manifolds, it won't be a tough choice.

Dyno testing of the NEW Weiland® 8121 found an additional 25 peak HP and 23 lb/ft torque over Brand E P/N 2116!



## FEATURES/BENEFITS:

- Low rise/dual plane design builds maximum torque for street performance engines
- Permanent mold casting process for lighter, smoother, better looking and more consistent castings
- Available in satin, polished and Everbright™ coated
- Available for GM Vortec and standard small Block Chevy heads
- Dyno proven to make as much as 25hp over the leading competitor
- Fully CNC machined for a perfect fit
- Square bore carburetor flange
- Exhaust crossover for improved street drivability (Standard Small Block Chevy heads)

## RECOMMENDED ACCESSORIES

- Holley Street Avenger carb series in 570 or 670 CFM
- Universal Carburetor Installation Kit, p/n 20-124

## INSTALLATION NOTES

Utilizes late model alternator and A/C bracket mounting provisions  
Has additional vacuum tap off of runner  
Will clear HEI distributors  
Recommended Fel-Pro gasket number: 1256

## SPECIFICATIONS

- Power band: Idle to 5500RPM
- Overall Height - frt. 3.50", rr. 4.50".
- Weight is 14 lbs.
- 8120 port size: 1.84" height; 1.12" width
- 8121 port size: 2.00" height; 1.06" width

Application	Satin	Polished	Everbright™
1957-86; 262-400 SB Chevy V8 1987-later w/ alum heads	8120 <sup>(C)</sup> 3	8120P <sup>(C)</sup> 3	8120C <sup>(C)</sup> 3
262-400 SB using 1996 & later GM Vortec (L31) iron heads	8121 <sup>(C)</sup> 3	8121P <sup>(C)</sup> 3	8121C <sup>(C)</sup> 3

**NEW!**

(C) Not legal for street use with a 4-barrel in California on vehicles equipped with a 2-barrel carburetor, for which there was no 4-barrel option.

1 2 or 3 See page 4 for symbol explanation.

Tech Line: **270-781-9741**

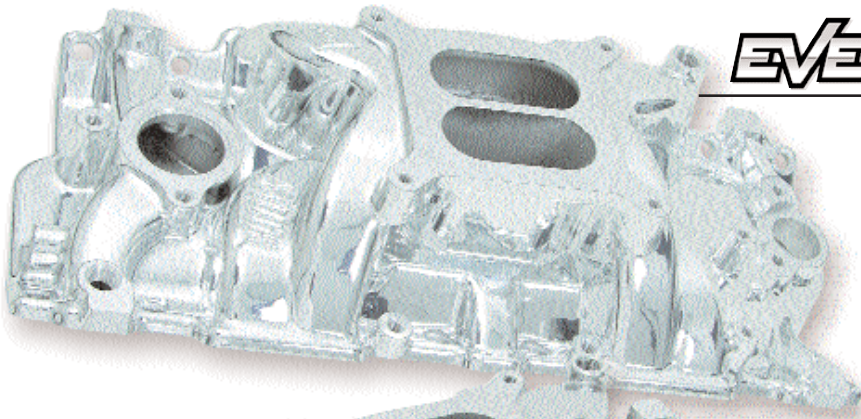
# MANIFOLDS

Stealth™ - Small Block Chevrolet

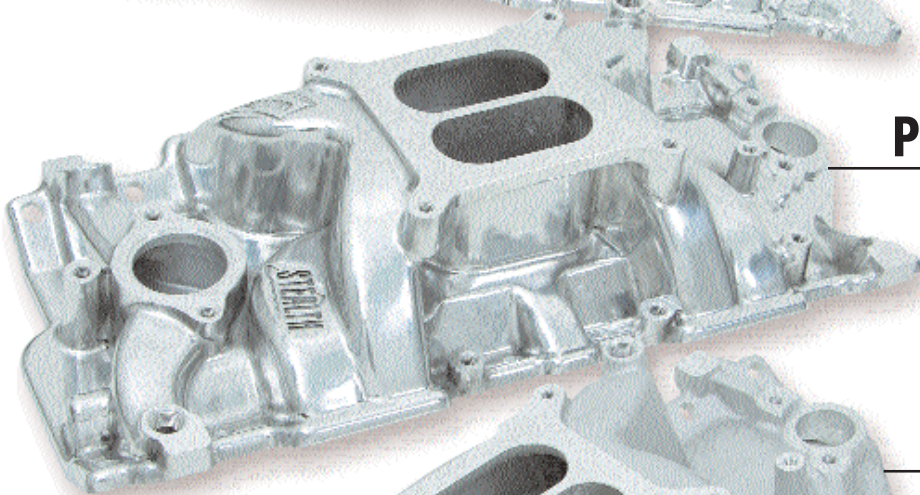


**NEW!**

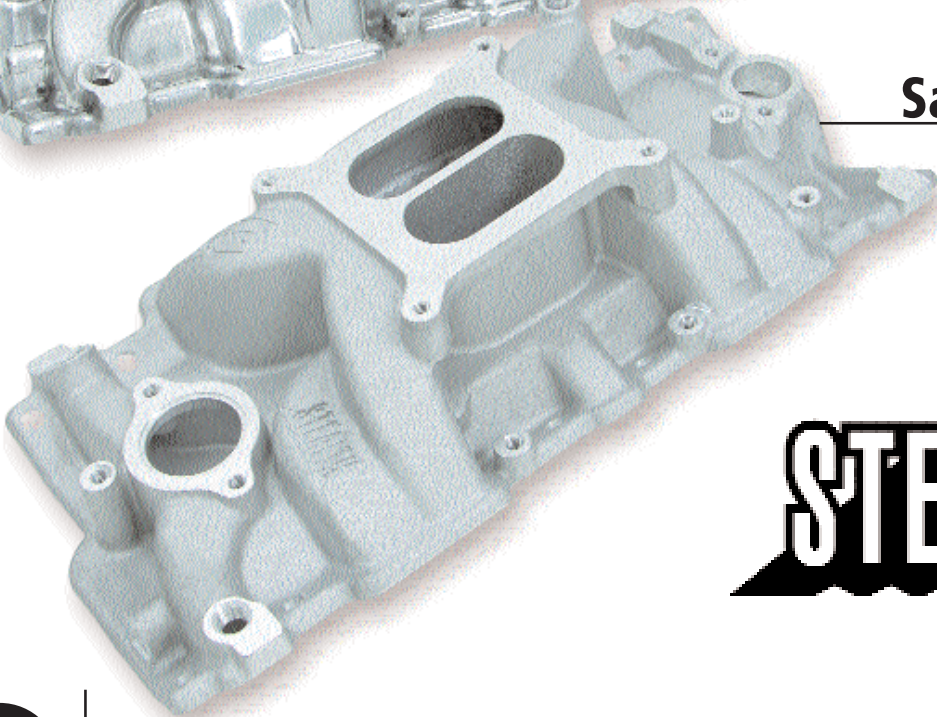
## STEALTH™ INTAKE MANIFOLDS - CHEVROLET SMALL BLOCK V8



**EVERBRIGHT™**  
COATED



Polished



Satin

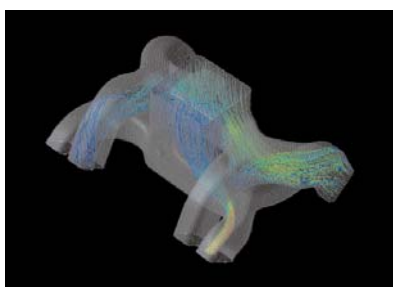
**STEALTH**

INTAKE MANIFOLDS





# STEALTH

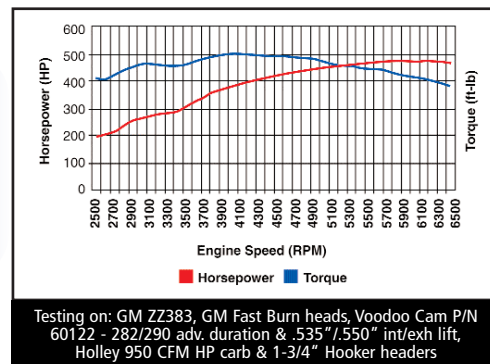


**Completely new designs optimized for today's bigger engines! Industry leading Computational Fluid Dynamics (CFD) airflow design software utilized for optimized air/fuel distribution and power.**

Looking for a wicked street/strip intake for your ride? Weiand has completely redesigned the Stealth™ series of small block Chevy manifolds using Computational Fluid Dynamics (CFD) to generate maximum horsepower and torque out of today's engines. Engine technology has really advanced in the performance world since the time many of the popular manifolds on the market were introduced 20+ years ago. With the popularity of larger stroker motors, more efficient cylinder head designs and aggressive cam profiles has come a need for manifolds capable of supporting these larger displacements.

These aren't your dad's old manifolds. These dual planes will nearly match a single plane manifold's peak horsepower number with a much fatter torque curve perfect for street use. Wondering how we stack up against the competition? Compare us and find out. When you see the power, quality and value pricing of Weiand manifolds, it won't be a tough choice.

**The new Weiand 8151 Stealth intake put out 474 HP @ 5,800 rpm and 502 lb/ft @ 4,100 rpm!**



### FEATURES/BENEFITS:

- High rise/dual plane design builds maximum torque and HP for stout street/strip applications
- Permanent mold casting process for lighter, smoother, better looking and more consistent castings
- Available in satin, polished and Everbright™ coated
- Available for GM Vortec and standard small Block Chevy heads
- Fully CNC machined for a perfect fit
- Square bore carburetor flange
- Exhaust crossover for improved street drivability (Standard Small Block Chevy heads)

### RECOMMENDED ACCESSORIES

- Holley Street Avenger® carb series in 770 or 870 CFM
- Holley Double Pumper® carb series in 750 or 850 CFM
- Universal Carburetor Installation Kit, p/n 20-124

### INSTALLATION NOTES

Utilizes late model alternator and A/C bracket mounting provisions. Has additional vacuum tap off of runner.  
 Recommended Fel-Pro gasket numbers: **(8150)** 1205; **(8151)** MS90131-2 (plastic body w/ o-ring seals) or MS98000T (Permadry, highly recommended)

### SPECIFICATIONS

- Power band: 1500 to 6700RPM
- Overall Height - frt. 4.19", rr. 5.27"
- Weight is 14.5 lbs.
- **8150** (standard Chevy head) port size: 1.92" height; 1.16" width
- **8151** (GM Vortec cylinder head) port size: 2.05" height; 1.02" width

Application	Satin	Polished	Everbright™
1957-86; 262-400 SB Chevy V8 1987-later w/ alum heads	<b>8150<sup>(C)</sup></b> ♦	<b>8150P<sup>(C)</sup></b> ♦	<b>8150C<sup>(C)</sup></b> ♦
262-400 SB using 1996 & later GM Vortec (L31) iron heads	<b>8151<sup>(C)</sup></b> ♦	<b>8151P<sup>(C)</sup></b> ♦	<b>8151C<sup>(C)</sup></b> ♦

**NEW!**

(C) Not legal for street use with a 4-barrel in California on vehicles equipped with a 2-barrel carburetor, for which there was no 4-barrel option.

1 2 or 3 See page 4 for symbol explanation.

Tech Line: **270-781-9741**

# MANIFOLDS

Stealth Air Strike™ - Small Block Chevrolet



**NEW!**

## STEALTH AIR STRIKE™ INTAKE MANIFOLDS - CHEVROLET SMALL BLOCK V8

*NEW Isolated runners to reduce intake charge heating and promote airflow between the hot engine and the intake plenum!*

**EVERBRIGHT™**  
COATED

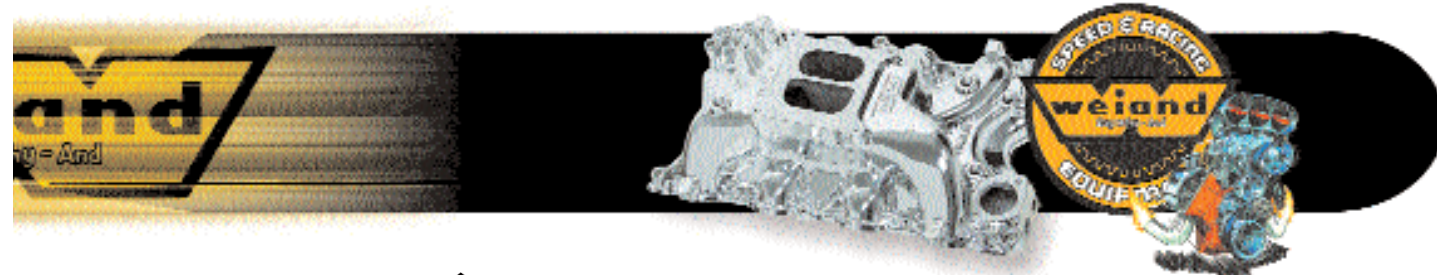


Polished

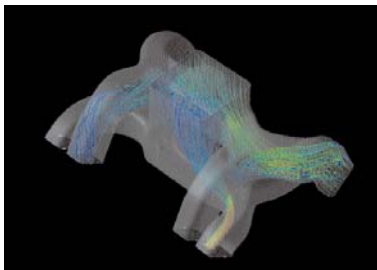
Satin



INTAKE MANIFOLDS



# STEALTH AIR STRIKE™



**Completely new designs optimized for today's bigger engines! Industry leading Computational Fluid Dynamics (CFD) airflow design software utilized for optimized air/fuel distribution and power.**

These all new Stealth Air Strike™ manifolds have been developed using Computational Fluid Dynamics (CFD) to generate maximum horsepower and torque out of today's engines. Popular Air Strike™ feature separates the hot engine valley from the manifold runners for the coolest, most dense fuel charge possible and aggressive race inspired looks.

Engine technology has really advanced in the performance world since the time many of the popular manifolds on the market were introduced 20+ years ago. With the popularity of larger stroker motors, more efficient cylinder head designs and aggressive cam profiles has come a need for manifolds capable of supporting these larger displacements.

The dual plane design and Air Strike™ plenum give you the race look and peak power without the loss of low end torque so important for drivability. Go ahead and compare us to the competition! When you see the power, quality, and value pricing of Weiland manifolds, it won't be a tough choice.

## FEATURES/BENEFITS:

- AIR STRIKE VERSIONS have isolated runners to reduce intake charge heating and promote airflow between the hot engine and the intake plenum
- High rise/dual plane design builds maximum torque and HP for stout street/strip applications
- Permanent mold casting process for lighter, smoother, better looking and more consistent castings
- Available in satin, polished and Everbright™ coated
- Available for GM Vortec and standard small Block Chevy heads
- Fully CNC machined for a perfect fit
- Square bore carburetor flange

## RECOMMENDED ACCESSORIES

- Holley Street Avenger® carb series in 770 or 870 CFM
- Holley Double Pumper® carb series in 750 or 850 CFM
- Holley HP™ carb series in 750 or 950 CFM
- Universal Carburetor Installation Kit, p/n 20-124

## INSTALLATION NOTES

Utilizes late model alternator and A/C bracket mounting provisions.

Has additional vacuum tap off of runner.

Recommended Fel-Pro gasket number: **(8501)** 1205;

**(8502)** MS90131-2

(plastic body w/ o-ring seals) or

MS98000T (Permadry, highly recommended)

## SPECIFICATIONS

- Power band: 1500 to 6700RPM
- Overall Height - frt. 4.19", rr. 5.27"
- Weight is 15.5 lbs.
- **8501** (standard Chevy head) port size: 1.92" height; 1.16" width
- **8502** (GM Vortec cylinder head) port size: 2.05" height; 1.02" width

Application	Satin	Polished	Everbright™
1957-86; 262-400 SB Chevy V8 1987-later w/ alum heads	<b>8501</b> <sup>(C)</sup>	<b>8501P</b> <sup>(C)</sup>	<b>8501C</b> <sup>(C)</sup>
262-400 SB using 1996 & later Vortec (L31) iron heads	<b>8502</b> <sup>(C)</sup>	<b>8502P</b> <sup>(C)</sup>	<b>8502C</b> <sup>(C)</sup>

**NEW!**

(C) Not legal for street use with a 4-barrel in California on vehicles equipped with a 2-barrel carburetor, for which there was no 4-barrel option.

See page 4 for symbol explanation.

Tech Line: **270-781-9741**

**15**

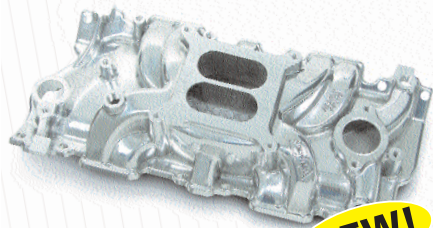
# MANIFOLDS

## Chevrolet - Small Block V8



### CHEVROLET SMALL BLOCK V8

Part #



**NEW!**

#### Features

- Low rise/dual plane design
- Idle-5500 RPM power band
- No EGR provision
- Square flange carburetor mounting

1957-86; 262, 283, 305, 327, 350, 400V8  
1987-Later w/Aluminum Heads

#### HOLLEY CARBURETOR RECOMMENDATIONS

0-80570 (570 CFM); 0-80670 (670 CFM);  
20-124 (Universal Carb Installation Kit)

#### INSTALLATION NOTES

Utilizes late model alternator and A/C bracket mounting provisions.  
Has additional vacuum tap off of runner.

#### SPECIFICATIONS

Height - frt. 3.50", rr. 4.50". Shipping weight is 14 lbs.  
Port size: 1.84" height; 1.12" width

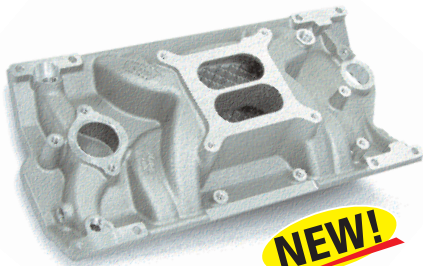
**8120**<sup>(C)</sup> **3**  
(Satin)

**8120P**<sup>(C)</sup> **3**  
(Polished)

**8120C**<sup>(C)</sup> **3**  
(Everbright™)

**ACTION  
+PLUS**

See page 10 for images of other finishes.



**NEW!**

#### Features

- Low rise/dual plane design
- Idle-5500 RPM power band
- No EGR provision
- Square flange carburetor mounting

262-400 SB using 1996 & later  
Vortec (L31) iron heads

#### HOLLEY CARBURETOR RECOMMENDATIONS

0-80570 (570 CFM); 0-80670 (670 CFM);  
20-124 (Universal Carb Installation Kit)

#### INSTALLATION NOTES

Utilizes late model alternator and A/C bracket mounting provisions.  
Has additional vacuum tap off of runner.

#### SPECIFICATIONS

Height - frt. 3.50", rr. 4.50". Shipping weight is 14 lbs.  
Port size: 2.00" height; 1.06" width

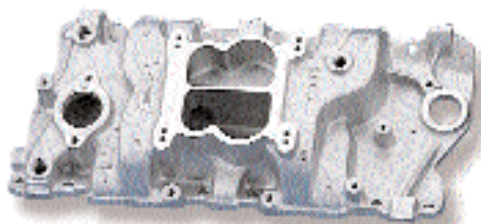
**8121**<sup>(C)</sup> **3**  
(Satin)

**8121P**<sup>(C)</sup> **3**  
(Polished)

**8121C**<sup>(C)</sup> **3**  
(Everbright™)

**ACTION  
+PLUS**

See page 10 for images of other finishes.



#### Features

- Low rise/dual plane design
- Idle-5500 RPM power band
- No EGR provision
- Spread bore and square bore carburetor mounting flange

1957-86; 262, 283, 305, 327, 350, 400V8  
1987-Later w/Aluminum Heads

1987-Later w/Cast Iron Heads

#### HOLLEY CARBURETOR RECOMMENDATIONS

0-80570 (570 CFM square bore);  
0-80457S (600 CFM square bore);  
0-4776C (600 CFM square bore)

#### INSTALLATION NOTES

Square bore carburetors may require plate p/n 9006 to seal properly.  
HEI will clear.  
Thermostat spacer, P/N 17-58 may be required

#### SPECIFICATIONS

Height - frt. 3.50", rr. 4.00". Shipping weight: p/n 8004 is 17 lbs.; p/n 8024 is 18 lbs.  
Port Size: 1.84" height; 1.12" width (8004), 1.17" width (8024)

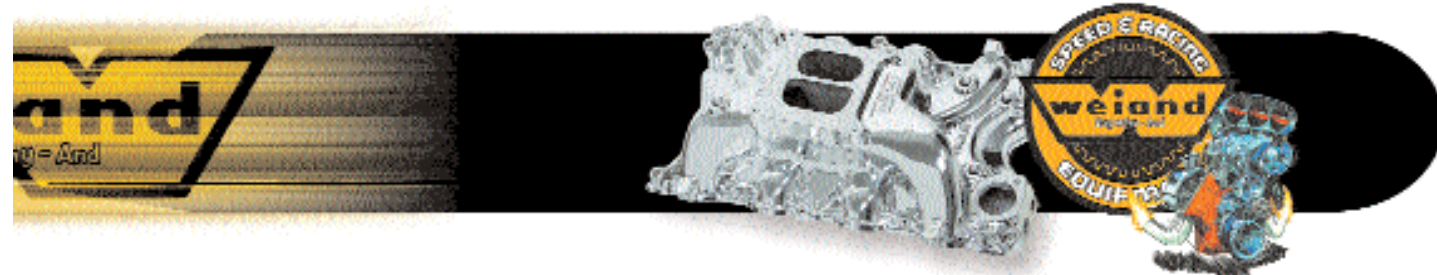
**8004**<sup>(C)</sup> **3**

**8024**<sup>(C)</sup> **3**

**ACTION  
+PLUS**

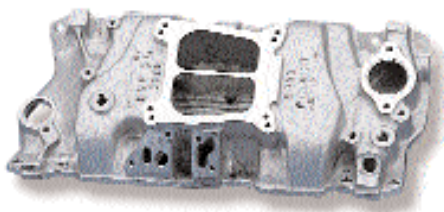
(C) Not legal for street use with a 4-barrel in California on vehicles equipped with a 2-barrel carburetor, for which there was no 4-barrel option.

**1** **2** or **3** See page 4 for symbol explanation.



## CHEVROLET SMALL BLOCK V8

Part #



262, 283, 305, 307, 327, 350, 400 V8  
1962-86 All Models (Calif. E.O. D-256)  
1987-Later w/ Aluminum Heads

8000<sup>(C)</sup> **1**

### Features

- Medium rise/dual plane design
- Idle-5500 RPM power band
- EGR provision
- Spread bore and square bore carburetor mounting flange

**HOLLEY CARBURETOR RECOMMENDATIONS**  
0-80555S (650 CFM spread bore); 0-80457S (600 CFM square bore);  
0-4776S (600 CFM square bore)

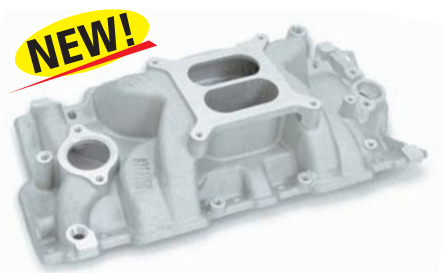
### INSTALLATION NOTES

Square bore carburetors may require plate p/n 9006 to seal properly.  
HEI will clear.

### SPECIFICATIONS

Height - frt. 3.75", rr. 4.63". Shipping weight is 20 lbs.  
Port size: 1.94" height; 1.24" width

**ACTION  
+PLUS**



1957-86; 262, 283, 305, 327, 350, 400V8  
1987-Later w/Aluminum Heads

8150<sup>(C)</sup> **3**  
(Satin)

8150P<sup>(C)</sup> **3**  
(Polished)

**HOLLEY CARBURETOR RECOMMENDATIONS**  
0-80670 (670 CFM); 0-80770 (770 CFM); 0-4777C (650 CFM);  
0-4779C (750 CFM); 20-124 (Universal Carb Installation Kit)

### INSTALLATION NOTES

Utilizes late model alternator and A/C bracket mounting provisions.  
Has additional vacuum tap off of runner.

### SPECIFICATIONS

Height - frt. 4.19", rr. 5.27". Shipping weight is 14.5 lbs.  
Port size: 1.92" height; 1.16" width

8150C<sup>(C)</sup> **3**  
(Everbright™)

### Features

- High rise/dual plane design for maximum torque & HP for stout street/strip engines
- 1500-6700 RPM power band
- Fully CNC machined for a perfect fit
- Square flange carburetor mounting

See page 12 for images of other finishes.

**STEALTH**



262-400 SB using 1996 & later  
Vortec (L31) iron heads

8151<sup>(C)</sup> **3**  
(Satin)

8151P<sup>(C)</sup> **3**  
(Polished)

**HOLLEY CARBURETOR RECOMMENDATIONS**  
0-80670 (670 CFM); 0-80770 (770 CFM); 0-4777C (650 CFM);  
0-4779C (750 CFM); 20-124 (Universal Carb Installation Kit)

### INSTALLATION NOTES

Utilizes late model alternator and A/C bracket mounting provisions.  
Has additional vacuum tap off of runner.

### SPECIFICATIONS

Height - frt. 4.19", rr. 5.27". Shipping weight is 14.5 lbs.  
Port size: 2.05" height; 1.02" width

8151C<sup>(C)</sup> **3**  
(Everbright™)

### Features

- High rise/dual plane design for maximum torque & HP for stout street/strip engines
- 1500-6700 RPM power band
- Fully CNC machined for a perfect fit
- Square flange carburetor mounting

See page 12 for images of other finishes.

**STEALTH**

Tech Line: **270-781-9741**

**17**

# MANIFOLDS

## Chevrolet - Small Block V8



### CHEVROLET SMALL BLOCK V8

Part #



#### Features

- Isolated runners to reduce intake charge heating and promote airflow between the hot engine and the intake
- High rise/dual plane design for maximum torque & HP for stout street/strip engines
- 1500-6700 RPM power band
- Fully CNC machined for a perfect fit
- Square flange carburetor mounting

1957-86; 262, 283, 305, 327, 350, 400V8  
1987-Later w/Aluminum Heads

#### HOLLEY CARBURETOR RECOMMENDATIONS

0-80670 (670 CFM); 0-80770 (770 CFM); 0-4777C (650 CFM);  
0-4779C (750 CFM); 20-124 (Universal Carb Installation Kit)

#### INSTALLATION NOTES

Utilizes late model alternator and A/C bracket mounting provisions.  
Has additional vacuum tap off of runner.

#### SPECIFICATIONS

Height - frt. 4.19", rr. 5.27". Shipping weight is 15.5 lbs.  
Port size: 1.92" height; 1.16" width

**8501**<sup>(C)</sup>   
(Satin)

**8501P**<sup>(C)</sup>   
(Polished)

**8501C**<sup>(C)</sup>   
(Everbright™)



See page 14 for images of other finishes.



#### Features

- Isolated runners to reduce intake charge heating and promote airflow between the hot engine and the intake
- High rise/dual plane design for maximum torque & HP for stout street/strip engines
- 1500-6700 RPM power band
- Fully CNC machined for a perfect fit
- Square flange carburetor mounting

262-400 SB using 1996 & later  
Vortec (L31) iron heads

#### HOLLEY CARBURETOR RECOMMENDATIONS

0-80670 (670 CFM); 0-80770 (770 CFM); 0-4777C (650 CFM);  
0-4779C (750 CFM); 20-124 (Universal Carb Installation Kit)

#### INSTALLATION NOTES

Utilizes late model alternator and A/C bracket mounting provisions.  
Has additional vacuum tap off of runner.

#### SPECIFICATIONS

Height - frt. 4.19", rr. 5.27". Shipping weight is 15.5 lbs.  
Port size: 2.05" height; 1.02" width

**8502**<sup>(C)</sup>   
(Satin)

**8502P**<sup>(C)</sup>   
(Polished)

**8502C**<sup>(C)</sup>   
(Everbright™)



See page 14 for images of other finishes.



#### Features

- High rise/dual plane design
- 1500-6700 RPM power band
- No EGR provision
- Square flange carburetor mounting
- Lunati camshaft and lifter kit available under P/N 01003LK

1957-86; 262, 283, 305, 327, 350, 400V8  
1987-Later w/Aluminum Heads

#### HOLLEY CARBURETOR RECOMMENDATIONS

0-80457S (600 CFM); 0-4778S (700 CFM); 0-80508S (750 CFM)

#### INSTALLATION NOTES

HEI will clear.  
Alternator bracket may require modification.

#### SPECIFICATIONS

Height - frt. 4.18", rr. 4.50". Shipping weight is 20 lbs.  
Port size: 1.87" height; 1.15" width

**8016**<sup>(C)</sup>



(B) Not legal for sale or use in California on any pollution controlled motor vehicles

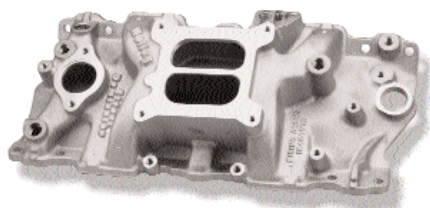
(C) Not legal for street use with a 4-barrel in California on vehicles equipped with a 2-barrel carburetor, for which there was no 4-barrel option.

or See page 4 for symbol explanation.



# CHEVROLET SMALL BLOCK V8

Part #



### Features

- High rise/dual plane design
- Idle-5500 RPM power band
- EGR provision
- Square flange carburetor mounting
- Lunati camshaft kit is available under P/N **06109LK**

1987-Later w/Cast Iron Heads  
Non-Vortec, Non-LT1

**300-64**

### CARBURETOR RECOMMENDATIONS

**0-80457S** (600 CFM); **0-4776S** (600 CFM);  
**0-80508S** (750 CFM)

### INSTALLATION NOTES

Utilizes late model alternator and A/C bracket mounting provisions.  
Has vacuum tap off manifold runners.  
Extra installation hardware included.

### SPECIFICATIONS

Height - frt. 3.68", rr. 5.02". Shipping weight is 18 lbs.  
Port size: 1.90" height; 1.16" width

**Holley**  
**Street**  
**Dominator**



### Features

- 1500-6000 RPM power band
- Single plane/open plenum design
- Includes removable plenum divider plate
- Square flange carburetor mounting

1957-86; 262, 283, 305, 327, 350, 400V8  
1987-Later w/Aluminum Heads

**7546**<sup>(C)</sup>

### HOLLEY CARBURETOR RECOMMENDATIONS

650 - 850 CFM Holley HP

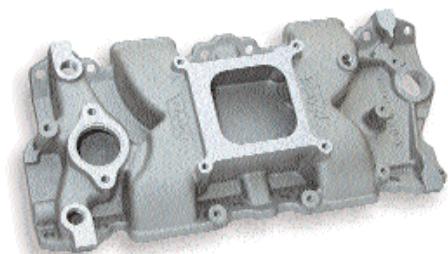
### INSTALLATION NOTES

Use divider plate with camshafts under  
250° duration at .050".

### SPECIFICATIONS

Height - frt. 4.38", rr. 5.31".  
Shipping weight is 18 lbs.  
Port size: 1.85" height; 1.18" width

**X-CELerator**



### Features

- 2000-6500 RPM power band
- Single plane/open plenum design
- No provision for divorced or hot air choke
- Square flange carburetor mounting

1957-86; 262, 283, 305, 327, 350, 400V8  
1987-Later w/Aluminum Heads

**7547-1**<sup>(C)</sup>

### HOLLEY CARBURETOR RECOMMENDATIONS

650 - 750 CFM Holley HP

### SPECIFICATIONS

Height - frt. 3.09", rr. 4.06".  
Shipping weight is 14 lbs.  
Port size: 1.85" height; 1.15" width

**X-CELerator**



**for Stock Car and Sportmod Competition!**

Tech Line: **270-781-9741**

**19**

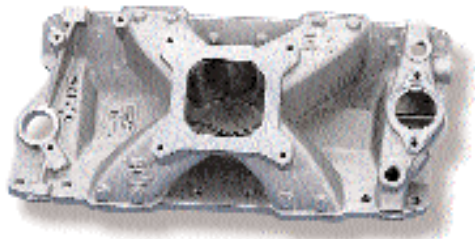
# MANIFOLDS

## Chevrolet - Small Block V8



### CHEVROLET SMALL BLOCK V8

Part #



1957-86; 262, 283, 305, 327, 350, 400V8  
1987-Later w/Aluminum Heads

7530<sup>(B)</sup>

#### HOLLEY CARBURETOR RECOMMENDATIONS

650 - 850 CFM Holley HP

#### INSTALLATION NOTES

For automatic transmissions, use spacer plate w/ plenum divider, P/N 7460 to develop low-RPM vacuum.

#### SPECIFICATIONS

Height - frt. 3.63", rr. 4.56".  
Shipping weight is 20 lbs.  
Port size: 2.17" height; 1.24" width

#### Features

- 2800-7200 RPM power band
- Single plane design with open/isolated plenum
- Water cross-over passage is isolated for superior cooling
- Square flange carburetor mounting



1957-86; 262, 283, 305, 327, 350, 400V8  
1987-Later w/Aluminum Heads

7532<sup>(B)</sup>

#### HOLLEY CARBURETOR RECOMMENDATIONS

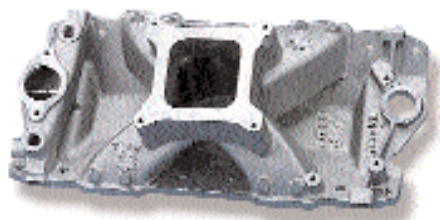
650 - 850 CFM Holley HP

#### SPECIFICATIONS

Height - frt. 4.38", rr. 5.31".  
Shipping weight is 21 lbs.  
Port size: 2.09" height; 1.24" width

#### Features

- 2800-7800 RPM power band
- Single plane design with open/isolated plenum
- 3/4" raised plenum
- Square flange carburetor mounting
- Water cross-over passage is isolated for superior cooling



1957-86; 262, 283, 305, 327, 350, 400V8  
1987-Later w/Aluminum Heads

7531<sup>(B)</sup>

#### HOLLEY CARBURETOR RECOMMENDATIONS

650 - 850 CFM Holley HP

#### SPECIFICATIONS

Height - frt. 5.63", rr. 6.56".  
Shipping weight is 23 lbs.  
Port size: 2.07" height; 1.24" width

#### Features

- 3000-8200 RPM power band
- Single plane design with open/isolated plenum
- 2.00" raised plenum
- Isolated runners
- Water cross-over passage is isolated for superior cooling
- Square flange carburetor mounting

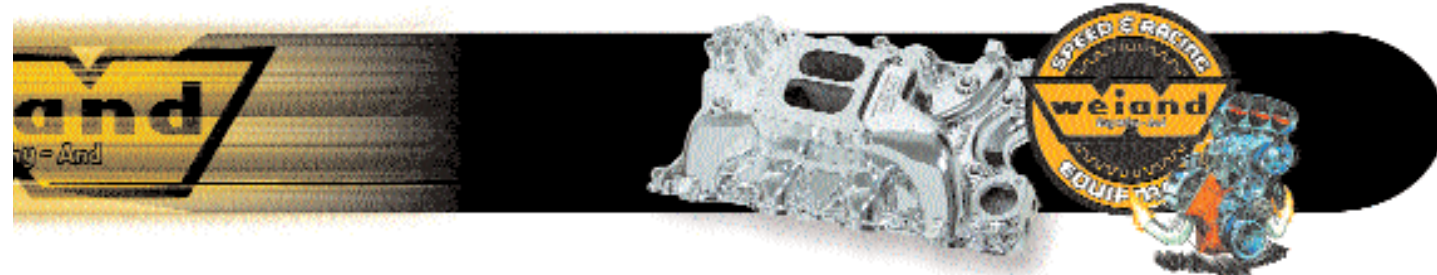


(B) Not legal for sale or use in California on any pollution controlled motor vehicles

(C) Not legal for street use with a 4-barrel in California on vehicles equipped with a 2-barrel carburetor, for which there was no 4-barrel option.

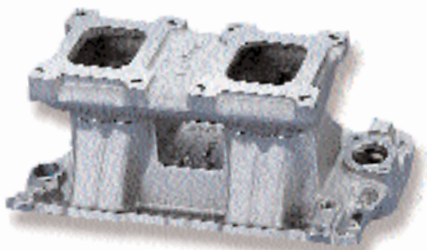
or See page 4 for symbol explanation.





# CHEVROLET SMALL BLOCK V8

Part #



1957-86; 262, 283, 305, 327, 350, 400V8  
1987-Later w/Aluminum Heads

**1984<sup>(B)</sup> 3**

**HOLLEY CARBURETOR RECOMMENDATIONS**

600 - 850 CFM Holley HP

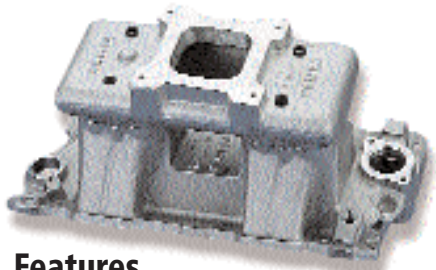
**SPECIFICATIONS**

Height - frt. 9.06", rr. 9.50".  
Shipping weight is 25 lbs.  
Port size 1.89" height; 1.18" width

**Hi-Ram**

**Features**

- 2800-8000 RPM power band
- 2 x 4 carburetor setup
- Square flange carburetor mounting
- Special D-shaped port runner design
- Large plenum chamber
- GM HEI will not clear



1957-86; 262, 283, 305, 327, 350, 400V8  
1987-Later w/Aluminum Heads

**3984<sup>(B)</sup> 3**

**HOLLEY CARBURETOR RECOMMENDATIONS**

700 - 850 CFM Holley HP

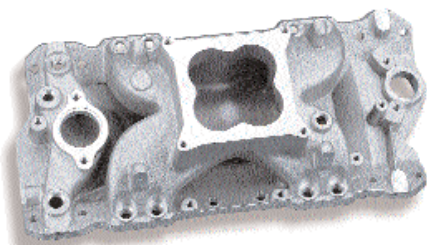
**SPECIFICATIONS**

Height - frt. 9.62", rr. 10.06".  
Shipping weight is 25 lbs.  
GM HEI will not clear  
Port size: 1.90" height; 1.18" width

**Hi-Ram**

**Features**

- 2800-7000 RPM power band
- Square flange carburetor mounting
- Special D-shaped port runner design
- Large plenum chamber



1957-86; 262, 283, 305, 327, 350, 400V8  
1987-Later w/Aluminum Heads

**9901-101-1<sup>(B)</sup> 3**

**9901-102-1**

Marine Use

350 V8 with Gen 1, Vortec cylinder heads

**9901-107<sup>(B)</sup> 3**

**INSTALLATION NOTES**

Fuel Rail Kit available. Order Holley P/N 9900-172  
Performance Fuel Injector Kits available.

**THROTTLE BODY RECOMMENDATIONS:**

Holley 1000 CFM billet throttle body, P/N 9900-171

**SPECIFICATIONS**

**9901-101-1 & 9901-102-1**  
Height - frt. 5.5", rr. 5.5"  
Port size: 1.89" height; 1.12" width  
**9901-107**  
Height - frt. 5.75", rr. 5.75"  
Port size: 2.09" height; 1.10" width



**Features**

- 2000-6000 RPM power band
- Designed for port fuel injection systems
- Accepts 1000 CFM Holley 4-bbl throttle body - P/N 9900-171
- Single plane manifold design
- Brass engine coolant crossover passage- (9901-102-1 only)

Tech Line: **270-781-9741**

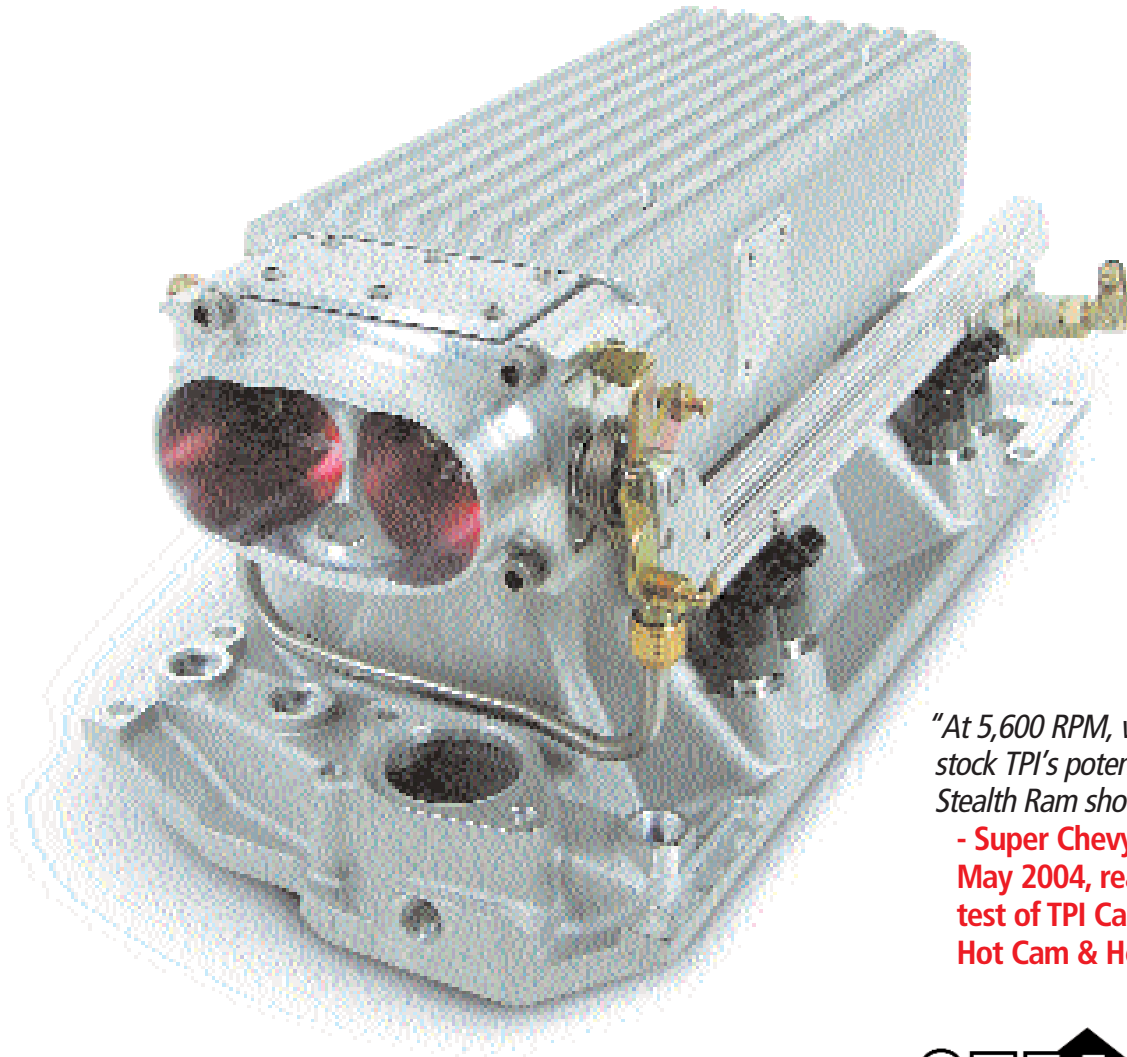
# MANIFOLDS

Stealth Ram™ - Small Block Chevrolet



**NEW!**

## STEALTH RAM™ INTAKE MANIFOLDS - CHEVROLET SMALL BLOCK V8

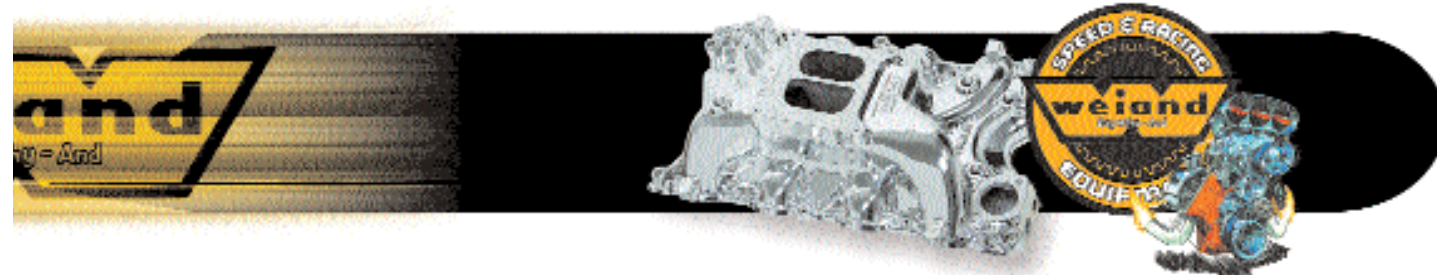


*"At 5,600 RPM, way beyond the stock TPI's potential, the Holley Stealth Ram showed a 98hp jump!"*

**- Super Chevy Magazine,  
May 2004, rear wheel dyno  
test of TPI Camaro with GM  
Hot Cam & Headers**

\* SHOWN WITH HOLLEY 112-507 THROTTLE BODY, INJECTORS, FUEL RAILS, REGULATOR & CROSS-OVER LINES.





The Weiland Stealth Ram™ intake is a revolutionary, radical departure from the ordinary. Designed to take advantage of the benefits associated with high ram manifolds, it combines aggressive race inspired looks with the drivability of EFI. Designed primarily as a component of the Holley Stealth Ram/Commander 950 EFI system, the manifold is now available for retrofit on L-98 TPI engines and other street/strip machines utilizing standard or GM Vortec Chevy cylinder heads. The manifold is designed to accept OEM and aftermarket TPI throttle bodies and includes provisions for mounting bracketry necessary for kickdown, cruise and throttle cables. Whether you are looking for more power for that late 80's Camaro or a new look for your street machine, look to Weiland.



**FEATURES/BENEFITS:**

- Great for street machines, street rods, trucks and muscle cars with ample hood clearance
- Two-piece design features individual D shaped runners optimized for a broad power range and a large plenum area for less reversion than traditional manifolds
- Can be used for blow-through superchargers and turbochargers in custom applications
- Available in satin or polished
- Available for GM Vortec and standard small Block Chevy heads
- Fully CNC machined for a perfect fit
- No exhaust crossover

**RECOMMENDED ACCESSORIES**

- Fuel Rail Kit for 7540/7540P w/ adjustable regulator: p/n **534-186**
- Fuel Rail Kit for 7540/7540P w/ non-adjustable regulator: p/n **534-185**
- Fuel Rail Kit for 7542/7542P (Vortec) w/ adjustable regulator: p/n **534-193**
- Fuel Rail Kit for 7542/7542P (Vortec) w/ non-adjustable regulator: p/n **534-192**
- For TPI conversions use Earl's **9894DBHERL** (14mm x 1.5 thread) or **9894DBJERL** (16mm x 1.5 thread) fuel injection line adapters to mate to -6 line for fuel rails.
- Commander 950 ECU kit (See Holley catalog for more information)

**INSTALLATION NOTES**

- Use Holley 2x58mm billet throttle body (p/n **112-503** or **112-507**) or stock TPI throttle body
- Requires use of small cap distributor
- Manifold features universal mounting bolt design engineered to accommodate both straight and angled center manifold bolts (requires P/N **90748** Weiland bolt kit for 1987 & later cast iron)
- Accepts stock or Lokar® TPI kickdown brackets
- May require additional sealing modifications for high boost blow through applications
- Recommended Fel-Pro gasket number: **(7542)** MS90131-2 (plastic body w/ o-ring seals) or MS98000T (Permadry, highly recommended)

**SPECIFICATIONS**

- Power band: Idle to 6500RPM
- Overall Height - frt. 10.25", rr. 10.25"
- Weight is 25 lbs.
- 7540 port size: 1.92" height; 1.18" width
- 7542 port size: 2.10" height; 1.12" width

Application	Satin	Polished
1957-86; 262-400 SB Chevy V8 1987-later w/ alum heads 1987-later w/ cast iron heads (see installation notes)	<b>7540</b> ◆	<b>7540P</b> ◆
262-400 SB using 1996 & later Vortec (L31) iron heads	<b>7542</b> ◆	<b>7542P</b> ◆

**NEW!**

1 2 or 3 See page 4 for symbol explanation.

Tech Line: **270-781-9741**

# MANIFOLDS

Air Ram™ - Chevrolet LS1 & LS6



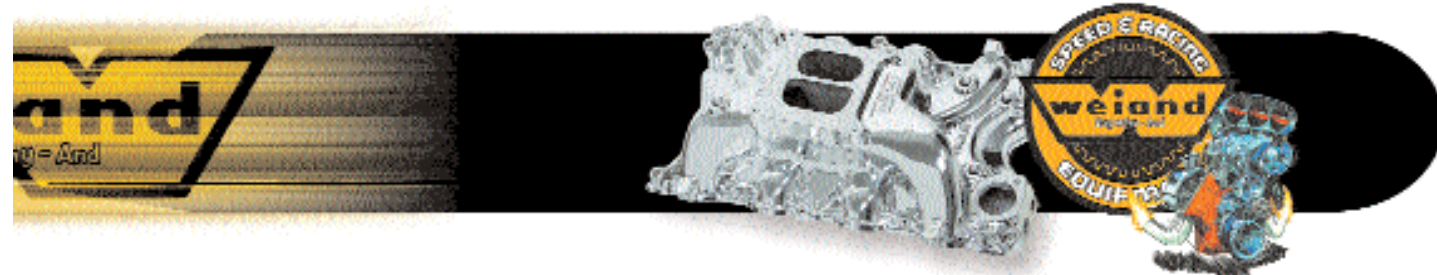
**NEW!**

## WEIAND AIR RAM™ INTAKE MANIFOLD - CHEVROLET LS1 & LS6



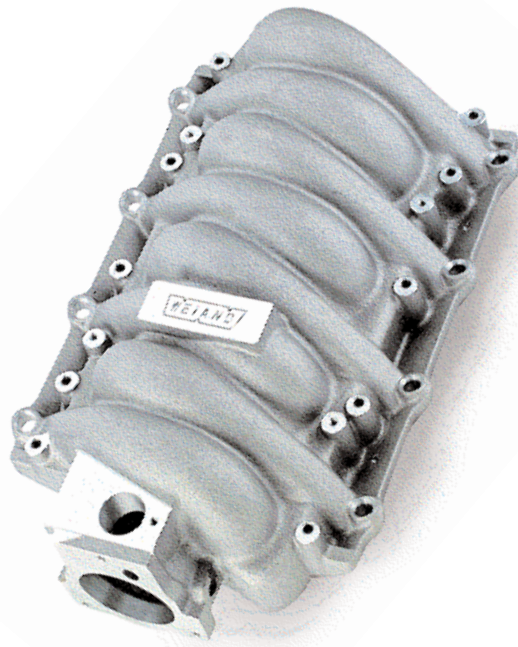
**AIR  
RAM™**  
INTAKE MANIFOLD

INTAKE MANIFOLDS



# AIR RAM™

INTAKE MANIFOLD



The Weiland Air Ram™ intake manifold was developed in conjunction with the late John Lingenfelter and was the first aluminum intake on the market for the LS series of motors. Designed with optimized airflow characteristics, the AirRam gives you the horsepower, torque and durability you need while providing hard-core performance appearance. The unique cast aluminum construction of the manifold makes it ideally suited for use with blower and turbo applications and provides the necessary material for custom NOS Fogger™ nitrous system installations. The manifold features a removable plate that allows for porting access inside the runners and plenum area for peak performance gains on heavily modified engines. The intake is engineered to use gaskets (provided) rather than the factory o-rings to allow unlimited port enlarging and matching. Manifolds are available in satin, polished or Everbright™ coated to dress up that drab engine in your Camaro, Corvette, street rod or muscle car.

### FEATURES/BENEFITS:

- Fits LS-1 and LS-6 cylinder heads
- Produces gains of up to 25hp over stock plastic intakes
- Designed to handle blow-through superchargers and turbochargers in custom applications
- Cast aluminum construction allows for easy plumbing of NOS Fogger nitrous systems
- Available in satin, polished or Everbright™ coated
- Fully CNC machined for a perfect fit
- Comes with provisions for EGR (block-off plate is available)
- Utilizes stock fuel rails, crossover lines and throttle body

### RECOMMENDED ACCESSORIES

- EGR block-off plate (satin): p/n 9001
- EGR block-off plate (polished): p/n 9001P

### INSTALLATION NOTES

- Does NOT fit LS-7. Will fit LS-2 engines if using a LS-1 or LS-6 throttle body.
- Maximum throttle body diameter is 77mm. Larger sizes will need to use an adaptor or will require machining
- Replacement gasket available under p/n 108-117

### SPECIFICATIONS

- Power band: Idle to 6500RPM
- Flange to logo pad height - 6.5"
- Weight is 24 lbs.
- Port size: 2.61" height; 1.09" width

Application	Satin	Polished	Everbright™
LS1 & LS6 Camaro, Firebird Corvette & crate engines	300-111	300-111P	300-111C <b>AVAILABLE LATE 2006!</b>

or See page 4 for symbol explanation.

Tech Line: **270-781-9741**

# MANIFOLDS

## Chevrolet - Small & Big Block V8

### CHEVROLET SMALL BLOCK V8

Part #



1957-86; 262, 283, 305, 327, 350, 400V8  
1987-Later w/Aluminum Heads

**7540**<sup>(C)</sup>   
(Satin)

**7540P**<sup>(C)</sup>   
(Polished)

262-400 SB using 1996 & later  
Vortec (L31) iron heads

**7542**<sup>(C)</sup>   
(Satin)

**7542P**<sup>(C)</sup>   
(Polished)

#### HOLLEY RECOMMENDATIONS

**534-186** (Fuel Rail Kit for 7540 & 7540P w/ adjustable regulator);  
**534-185** (Fuel Rail Kit for 7540 & 7540P w/ non-adjustable regulator);  
**534-193** (Fuel Rail Kit for 7542 & 7542P Vortec w/ adjustable regulator);  
**534-192** (Fuel Rail Kit for 7542 & 7542P Vortec w/ non-adjustable regulator);  
Commander 950 ECU kit (See Holley catalog for more applications)

#### INSTALLATION NOTES

Use Holley 2x58mm billet throttle body P/N **534-193** or stock TPI throttle body.  
Manifold features universal mounting bolt design engineered to accommodate both straight and angled center manifold bolts (requires P/N **90748** Weiland bolt kit for 1987 & later cast iron)

#### SPECIFICATIONS

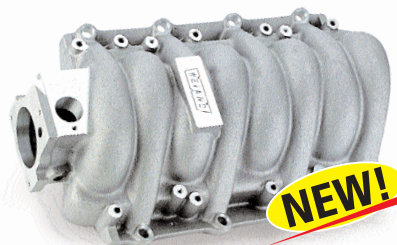
Height - frt. 10.25", rr. 10.25". Shipping weight is 25 lbs.  
7540 Port size: 1.92" height; 1.18" width, 7542 Port size: 2.10" height; 1.12" width

#### Features

- Two-piece design features short individual runners optimized for a broad power range
- Large upper plenum for less reversion than traditional manifolds
- Idle-6500 RPM power band

### CHEVROLET LS1 & LS6 V8

Part #



LS1 & LS6 V8

**300-111**<sup>(C)</sup>   
(Satin)

**300-111P**<sup>(C)</sup>   
(Polished)

**300-111C**<sup>(C)</sup>   
(Everbright™)  
**Available Late 2006!**

#### HOLLEY RECOMMENDATIONS

**9001** (EGR block-off plate - satin); **9001P** (polished)

#### INSTALLATION NOTES

Does NOT fit LS-7. Will fit LS-2 engines if using a LS-1 or LS-6 throttle body.  
Utilizes stock fuel rails, crossover lines and throttle body.  
Maximum throttle body diameter is 77mm.  
Larger sizes will need to use an adapter or will require machining

#### SPECIFICATIONS

Flange to logo pad height - 6.5"  
Shipping weight is 24 lbs.  
Port size: 2.61" height; 1.09" width

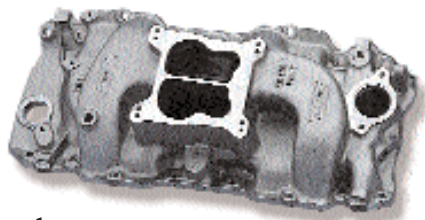


#### Features

- Cast aluminum construction
- EGR provisions (block-off plate available)
- Fully CNC machined for a perfect fit

### CHEVROLET BIG BLOCK V8

Part #



396, 402, 427, 454, 502  
Oval Port V8

**8005WIN**<sup>(C)</sup> 

#### HOLLEY CARBURETOR RECOMMENDATIONS

**0-80770** (770 CFM spread bore); **0-80508S** (750 CFM);  
**0-4779C** (750 CFM)

#### INSTALLATION NOTES

Square bore carburetors may require plate P/N **9006** to seal properly.  
Will fit tall blocks with use of WEIAND manifold spacer plate kit, P/N **8206**.

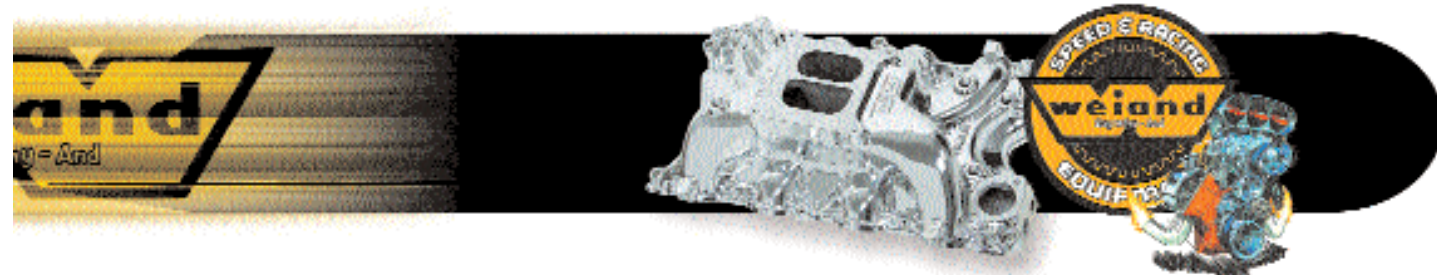
#### SPECIFICATIONS

Height - frt. 4.63", rr. 6.12".  
Shipping weight is 22 lbs.  
Port size: 1.83" height; 1.67" width

**ACTION  
+PLUS**

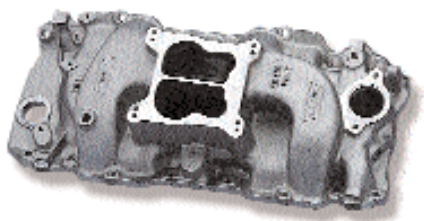
#### Features

- Machined for standard deck blocks
- High rise/dual plane design
- Idle-5500 RPM power band
- No EGR provision
- Lunati camshaft and lifter kit available under P/N **02001LK**
- Spread bore & square bore carb mounting flange



## CHEVROLET BIG BLOCK V8

Part #



454 "Peanut"  
Small Oval Port V8

8017<sup>(C)</sup>

**HOLLEY CARBURETOR RECOMMENDATIONS**  
0-80555C (650 CFM spread bore); 0-80508S (750 CFM)

**INSTALLATION NOTES**

Square bore carburetors may require plate P/N 9006 to seal properly.

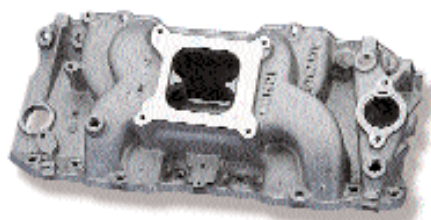
**SPECIFICATIONS**

Height - frt. 4.63", rr. 6.12".  
Shipping weight is 23 lbs.  
Port size: 1.69" height; 1.72" width

**ACTION  
+PLUS**

**Features**

- High rise/dual plane design
- Idle-5000 RPM power band
- No EGR provision
- Spread bore and square bore carburetor mounting flanges



396, 402, 427, 454, 502  
Rectangular Port V8

8018<sup>(C)</sup>

**HOLLEY CARBURETOR RECOMMENDATIONS**  
0-80508S (750 CFM); 0-4780C (800 CFM); 0-80770 (770 CFM)

**INSTALLATION NOTES**

Will fit tall blocks with use of WEIAND spacer plate kit, P/N 8204.

**SPECIFICATIONS**

Height - frt. 4.75", rr. 5.75"  
Port size: 2.30" height; 1.59" width

**STEALTH**

**Features**

- Machined for standard deck blocks
- Dual plane design
- 1500-6800 RPM power band
- No EGR provision
- Square flange carburetor mounting
- Lunati camshaft, lifters, springs, retainers and locks kit available under P/N 02003LSK



396, 402, 427, 454 Oval Port V8

8019<sup>(C)</sup>   
(Satin)

**HOLLEY CARBURETOR RECOMMENDATIONS**  
0-80508S (750 CFM); 0-4780S (800 CFM)

**INSTALLATION NOTES**

Will fit tall blocks with use of WEIAND spacer plate kit, P/N 8206.

**SPECIFICATIONS**

Height - frt. 4.75", rr. 5.75".  
Shipping weight is 25 lbs.  
Port size 1.84" height; 1.64" width

**STEALTH**

**Features**

- Machined for standard deck blocks
- Dual plane design
- 1500-6500 RPM power band
- No EGR provision
- Square flange carburetor mounting
- Lunati camshaft, lifters, springs, retainers and locks kit available under P/N 02002LSK

Tech Line: **270-781-9741**

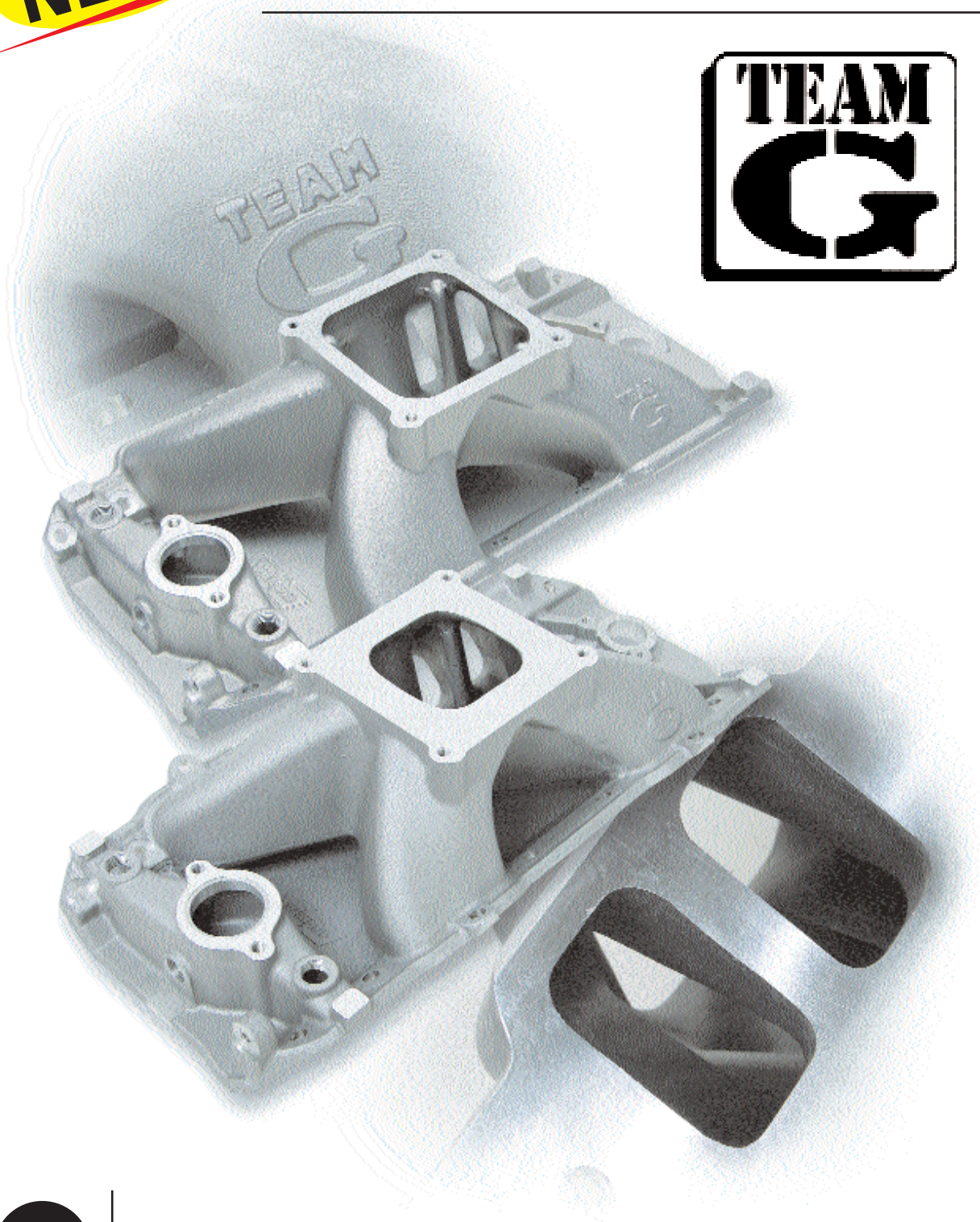
# MANIFOLDS

Team G™ - Chevrolet Big Block



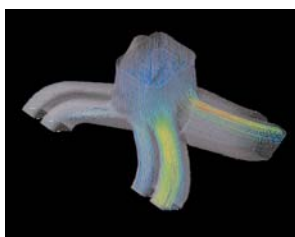
**NEW!**

## TEAM G™ INTAKE MANIFOLDS - CHEVROLET BIG BLOCK V8



INTAKE MANIFOLDS

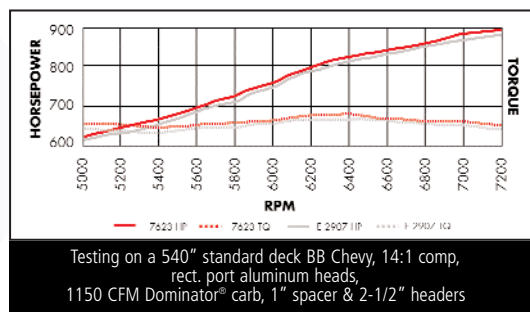




Completely new designs optimized for today's bigger engines! Industry leading Computational Fluid Dynamics (CFD) airflow design software utilized for optimized air/fuel distribution and power.

Welcome to a new era in race manifold technology. Weiand has raised the bar on intake manifold design through the use of industry leading Computational Fluid Dynamics Software. Technology this advanced has typically only been used in the aerospace industry for aircraft design. Weiand has taken this technology and designed a new line of Team G™ manifolds perfect for aggressive street machines and Comp/Super class big block powerplants. Computer engineered and dyno proven to produce more horsepower and torque as a result of superior cylinder to cylinder distribution gives this piece the edge over the competition and ensures safe, consistent air/fuel ratios for your engine. Permanent mold castings provide weight savings of 10 to 20% over traditional sand cast pieces while maintaining uniform wall thickness for porting. When you look for the pinnacle of performance, price and quality, look to Weiand.

Dyno testing of the NEW Weiand® 7623 found an additional 17 peak HP and 17 lb/ft torque over Brand E P/N 2907!



#### FEATURES/BENEFITS:

- Designed for today's larger cubic inch big block Chevy race engines
- Perfect for hard core drag racers in the NHRA Super Comp, Super Gas and Super Street classes and IHRA Quick Rod, Super Rod & Hot Rod categories
- Permanent mold casting process for lighter and more consistent castings with uniform wall sections, perfect for porting
- Available in Oval and Rectangular port configurations
- Available in Tall Deck and Standard Deck versions
- Available in 4150 or 4500 carb flanges
- Dyno proven to make 17hp more than competitor's comparable intake

#### RECOMMENDED ACCESSORIES

- Holley HP Race carbs
- Holley Dominator® race carbs

#### INSTALLATION NOTES

- Standard deck manifolds will fit tall deck blocks with use of Weiand spacer p/n **8204** (rectangular port) or **8206** (oval port)
- Recommended Fel-Pro gasket numbers:  
(**7620 & 7621**) 1210, 1212, 1212 S-3  
(**7622-7624**) 1275, 1275 S-3

#### SPECIFICATIONS

- Power band: 3000 to 7500RPM (oval port versions), 3000 to 8000RPM (rectangular port versions)
- Overall Height - frt. 5.96", rr. 5.96"
- Port size (oval): 1.87" height; 1.60" width
- Port size (rectangular): 2.28" height; 1.48" width

**NEW!**

Part #	Port Size	Carb Flange	Deck Height	RPM Band
<b>7620</b>	Oval	4150	Standard	3000-7500
<b>7621</b>	Oval	4500	Standard	3000-7500
<b>7622</b>	Rectangular	4150	Standard	3500-8000
<b>7623</b>	Rectangular	4500	Standard	3500-8000
<b>7624</b>	Rectangular	4500	Tall	3500-8000

**NOTE:** The above part numbers supersede part numbers 7521, 7522, 7523, 7524 & 7528.

Tech Line: **270-781-9741**

# MANIFOLDS

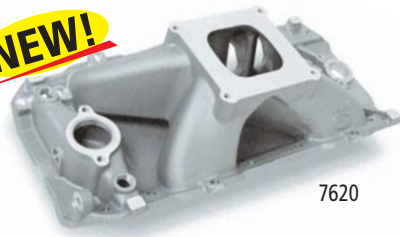
## Chevrolet - Big Block V8



### CHEVROLET BIG BLOCK V8

Part #

**NEW!**



7620

396, 402, 427, 454, 502

#### HOLLEY CARBURETOR RECOMMENDATIONS

4150 Holley HP & 4500 Holley HP

#### INSTALLATION NOTES

\* Will fit tall deck blocks using spacer kit P/N 8204.

#### SPECIFICATIONS

- Overall Height - frt. 5.96", rr. 5.96".
- Port size (oval): 1.87" height; 1.60" width

**7620**<sup>(C)\*</sup> 

(Oval port/Standard deck/  
4150 mounting flange)

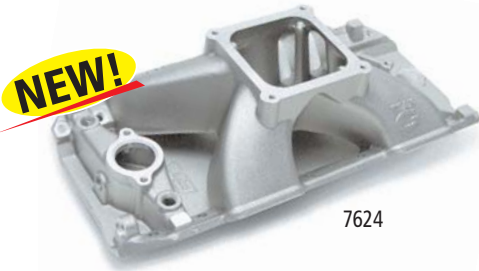
**7621**<sup>(C)\*</sup> 

(Oval port/Standard deck/  
4500 DOMINATOR® mounting flange)



#### Features

- Open plenum/single plane design
- No EGR provisions
- 3000-7500 RPM power band (7620, 7621)
- 4150 carburetor mounting flange (7620)
- 4500 DOMINATOR® carburetor mounting flange (7621)



7622

396, 402, 427, 454, 502

#### HOLLEY CARBURETOR RECOMMENDATIONS

4150 Holley HP & 4500 Holley HP

#### INSTALLATION NOTES

\* Will fit tall deck blocks using spacer kit P/N 8204.

#### SPECIFICATIONS

- Overall Height - frt. 5.96", rr. 5.96".
- Port size (rectangular): 2.28" height; 1.48" width

**7622**<sup>(C)\*</sup> 

(Rectangular port/Standard deck/  
4150 mounting flange)

**7623**<sup>(C)\*</sup> 

(Rectangular port/Standard deck/  
4500 DOMINATOR® mounting flange)

**7624**<sup>(C)</sup> 

(Rectangular port/Tall deck/  
4500 DOMINATOR® mounting flange)



#### Features

- Open plenum/single plane design
- No EGR provisions
- 3500-8000 RPM power band (7622, 7623, 7624)
- 4150 carburetor mounting flange (7622)
- 4500 DOMINATOR® carburetor mounting flange (7623 & 7624)



396, 402, 427, 454, 502  
Oval Port V8

**1981**<sup>(B)</sup> 

396, 402, 427, 454, 502  
Rectangular Port V8

**1985**<sup>(B)</sup> 

#### HOLLEY CARBURETOR RECOMMENDATIONS

650 - 850 Holley HP

#### INSTALLATION NOTES

Will fit tall deck with use of WEIAND P/N 8206 manifold spacer plate kit.

#### SPECIFICATIONS

- Height - frt. 10.12", rr. 10.93".
- Shipping weight is 30 lbs.
- 1981 Port size: 1.82" height; 1.60" width
- 1985 Port Size: 2.34" height; 1.55" width

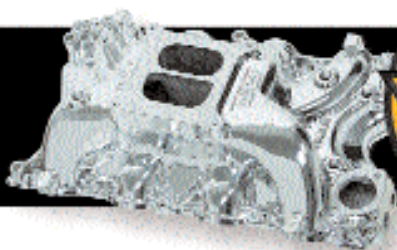
**Hi-Ram**

#### Features

- Machined for standard deck blocks
- 2500-7800 RPM power band
- Square flange carburetor mounting
- Special D-shaped port runner design
- Large plenum chamber
- GM HEI ignition will not clear
- Separate tops, runners and gaskets available

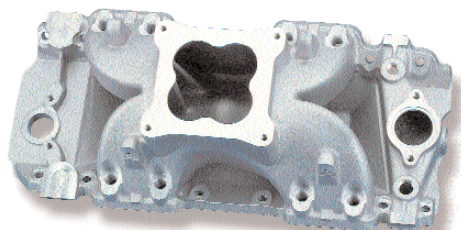
30

www.weiand.com



## CHEVROLET BIG BLOCK V8

Part #



396, 402, 427, 454, 502 V8  
Oval port heads

**9901-209<sup>(B)</sup>**

**9901-211**

(Marine use)

### INSTALLATION NOTES

Will fit tall blocks with use of WEIAND manifold spacer plate kit, P/N 8206.  
Fuel rail kit available. Order Holley P/N 9900-173.  
Performance fuel injection kits available.

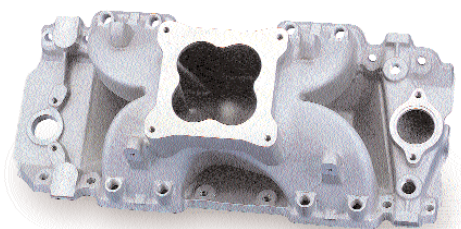
### SPECIFICATIONS

Height - frt. 7.25", rr. 7.25".  
Port size: 1.57" height; 1.60" width



### Features

- Standard deck blocks
- 2500-6000 RPM power band
- Single plane manifold design
- Designed for port fuel injection systems
- Accepts **1000** CFM Holley 4-bbl throttle body - P/N 9900-171
- Brass engine coolant crossover passage (9901-211 only)



396, 402, 427, 454, 502 V8  
Rectangular port heads

**9901-201<sup>(B)</sup>**

**9901-205**

(Marine use)

### INSTALLATION NOTES

Fuel rail kit available. Order Holley P/N 9900-173.  
Performance fuel injection kits available.

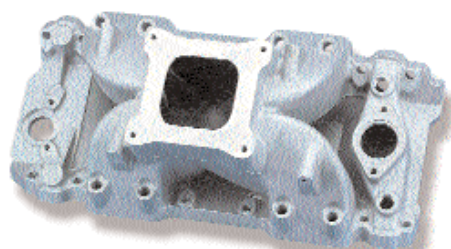
### SPECIFICATIONS

Height - frt. 7.13", rr. 7.13".  
Port size: 2.30" height; 1.60" width



### Features

- Machined for standard deck blocks
- 2500-6000 RPM power band
- Single plane manifold design
- Designed for port fuel injection systems
- Accepts **1000** CFM Holley 4-bbl throttle body - P/N 9900-171
- Brass engine coolant crossover passage (9901-205 only)



396, 402, 427, 454, 502  
Rectangular Port V8 (Tall Deck)

**9901-203<sup>(B)</sup>**

**9901-207**

(Marine use)

### INSTALLATION NOTES

Fuel rail kit available. Order Holley P/N 9900-173.  
Performance fuel injection kits available.

### SPECIFICATIONS

Height - frt. 7.123", rr. 7.13"  
Port size: 2.30" height; 1.60" width



### Features

- Machined for tall deck blocks
- 2500-6000 RPM power band using stock lifters
- Designed for port fuel injection systems
- Accepts **1000** CFM Holley 4-bbl throttle body - P/N 9900-171
- Single plane manifold design
- Brass engine coolant crossover passage (9901-207 only)

(B) Not legal for sale or use in California on any pollution controlled motor vehicles

or See page 4 for symbol explanation.

Tech Line: **270-781-9741**

**31**

# MANIFOLDS

Chevrolet - Big Block & Chrysler - Small Block



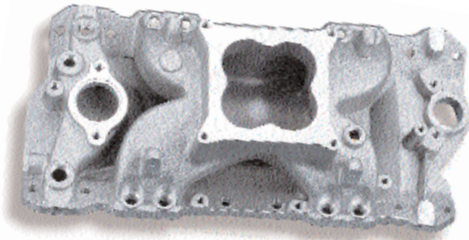
## CHEVROLET BIG BLOCK V8

Part #

**9901-202<sup>(B)</sup>**   
(Standard Deck)

**9901-204<sup>(B)</sup>**   
(Tall Deck)

**9901-206**  
(Standard Deck Marine use)



396, 402, 427, 454, 502 V8  
Rectangular port heads

### INSTALLATION NOTES

For tall deck applications use p/n 9901-204

### SPECIFICATIONS

Height - frt. 7.13", rr. 7.13"  
Port size: 2.30" height; 1.60" width

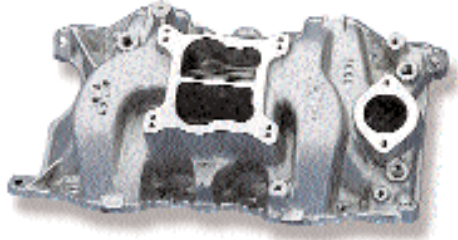
### Features

- Machined for standard deck blocks
- 3000-6500 RPM power band
- Designed for port fuel injection systems
- Accepts 2000 CFM Holley 4-bbl throttle body - P/N 112-538
- Single plane manifold design
- Brass engine coolant crossover passage (9901-206 only)
- Fuel rail and line kit available. Order Holley part # 9900-173
- Performance fuel injector kits available

## CHRYSLER SMALL BLOCK V8

Part #

**8007<sup>(C)</sup>**   
Stock Heads



318 (Late), 340, 360 V8

### HOLLEY CARBURETOR RECOMMENDATIONS

0-80457S (600 CFM); 0-4776S (600 CFM)

### INSTALLATION NOTES

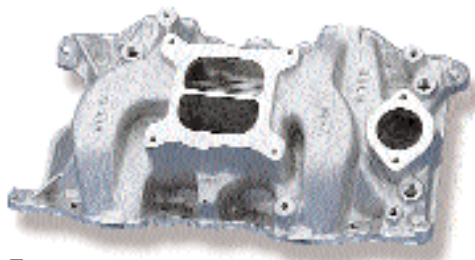
Square bore carburetors may require plate P/N 9006 to seal properly. Rotary A/C compressor will not clear on 1978 and later applications.

### SPECIFICATIONS

Height - frt. 4.88", rr. 5.94"  
Shipping weight is 22 lbs.  
Port size: 1.96" height; 1.00" width

### Features

- High rise/dual plane design
- Idle-6000 RPM power band
- No EGR provision
- Spread bore and square bore carburetor mounting flange
- Lunati camshaft and lifter kit available under P/N 04001LK



318 (Late), 340, 360 V8

**8022<sup>(C)</sup>**

### HOLLEY CARBURETOR RECOMMENDATIONS

0-80457S (600 CFM); 0-4778S (700 CFM);  
0-80508S (750 CFM)

### INSTALLATION NOTES

Rotary A/C compressor will not clear on 1978 and later applications.

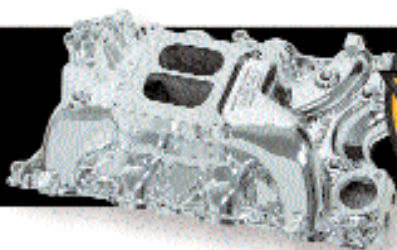
### SPECIFICATIONS

Height - frt. 4.88", rr. 5.94"  
Shipping weight is 23 lbs.  
Port size: 1.96" height; 1.00" width

### Features

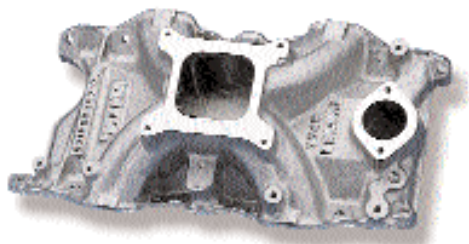
- High rise/dual plane design
- Idle-6800 RPM power band
- No EGR provision
- Square flange carburetor mounting





# CHRYSLER SMALL BLOCK V8

Part #



318 (from 1967), 340, 360 V8

7545<sup>(B)</sup>

### HOLLEY CARBURETOR RECOMMENDATIONS

650 - 750 Holley HP

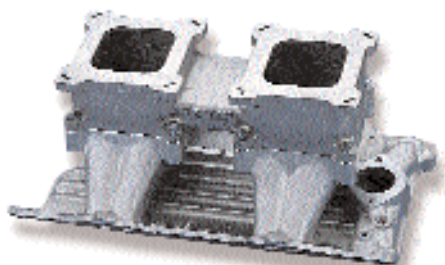
### SPECIFICATIONS

Height - frt. 4.50", rr. 5.63".  
Shipping weight is 17 lbs.  
Port size: 2.08" height; 1.27" width

### Features

- 1500-7000 RPM power band
- Fits stock Chrysler heads only
- Single plane/open plenum design
- Square flange carburetor mounting

## X-CELerator



318 (from 1967), 340, 360 V8

1995<sup>(B)</sup>

### HOLLEY CARBURETOR RECOMMENDATIONS

650 - 750 Holley HP

### SPECIFICATIONS

Height - frt. 8.93", rr. 9.37".  
Shipping weight is 27 lbs.  
Port size: 2.08" height; 1.08" width

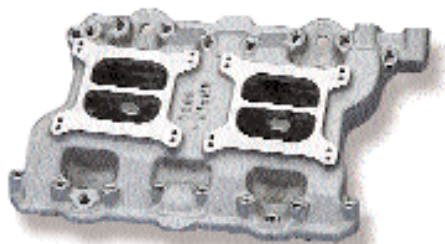
### Features

- 3000-9000 RPM power band
- 2 x 4 carburetor setup
- Square flange carburetor mounting
- Special D-shaped port runner design
- Large plenum chamber
- Separate tops, runners and gaskets available

## Hi-Ram

# CHRYSLER HEMI V8

Part #



331, 354, 392 Early Hemi

7263

### HOLLEY CARBURETOR RECOMMENDATIONS

Use O.E. style carburetor

### INSTALLATION

Carburetor linkage must be fabricated.

### SPECIFICATIONS

Height - frt. 3.00", rr. 3.88".  
Shipping weight is 19 lbs.  
Port size: 1.87" height; 1.40" width

### Features

- Single plane design
- 2000-6800 RPM power band
- Square flange carburetor mounting

## Hi-Rise

(B) Not legal for sale or use in California on any pollution controlled motor vehicles

(C) Not legal for street use with a 4-barrel in California on vehicles equipped with a 2-barrel carburetor, for which there was no 4-barrel option.

See page 4 for symbol explanation.

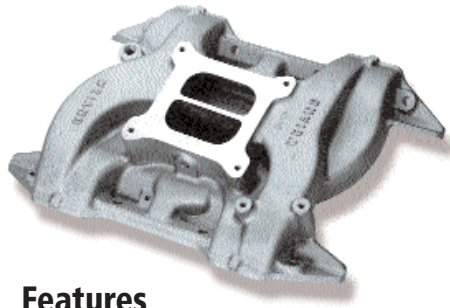
# MANIFOLDS

## Chrysler - Big Block V8



### CHRYSLER BIG BLOCK V8

Part #



361, 383, 400 V8

8008<sup>(C)</sup>

**HOLLEY CARBURETOR RECOMMENDATIONS**  
0-80457S (600 CFM); 0-4777S (650 CFM)

**INSTALLATION NOTES**

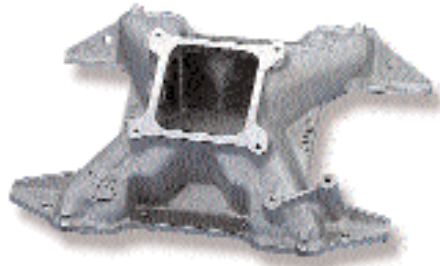
Lunati camshaft and lifter kit available under P/N 03001LK

**SPECIFICATIONS**

Height - frt. 3.62", rr. 4.00".  
Shipping weight is 18 lbs.  
Port size: 2.14" height; 1.11" width

**Features**

- Medium rise/dual plane design
- Idle-6000 RPM power band
- No EGR provision
- Square flange carburetor mounting



361, 383, 400 V8

7533<sup>(B)</sup>

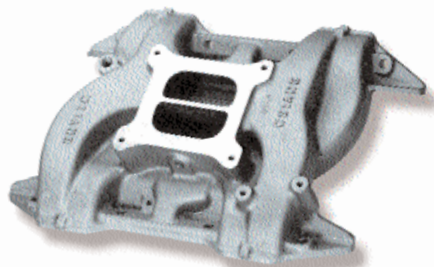
**HOLLEY CARBURETOR RECOMMENDATIONS**  
750 - 850 CFM Holley HP

**SPECIFICATIONS**

Height - frt. 4.69", rr. 5.69".  
Shipping weight is 16 lbs.  
Port size: 2.24" height; 1.15" width

**Features**

- 2700-7800 RPM power band
- Single plane design with open/isolate plenum
- Large plenum chamber
- Square flange carburetor mounting



413, 426 Wedge and 440 V8

8009<sup>(C)</sup>

**HOLLEY CARBURETOR RECOMMENDATIONS**  
0-80508S (750 CFM); 0-4779S (750 CFM)

**INSTALLATION NOTES**

Lunati camshaft and lifter kit available under P/N 03001LK

**SPECIFICATIONS**

Height - frt. 3.25", rr. 3.69".  
Shipping weight is 17 lbs.

**Features**

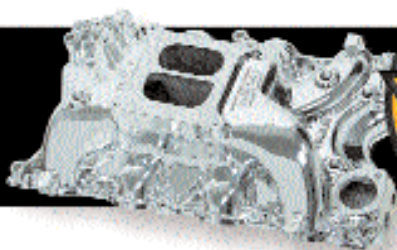
- Low rise/dual plane design
- Idle-6000 RPM power band
- No EGR provision
- Square flange carburetor mounting



(B) Not legal for sale or use in California on any pollution controlled motor vehicles

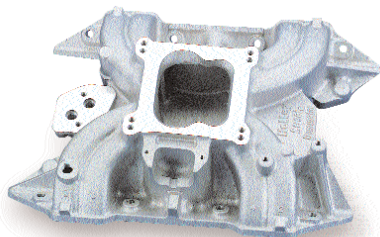
(C) Not legal for street use with a 4-barrel in California on vehicles equipped with a 2-barrel carburetor, for which there was no 4-barrel option.

or See page 4 for symbol explanation.



# CHRYSLER BIG BLOCK V8

Part #



413, 426 Wedge and 440 V8

300-14<sup>(C)</sup>

### CARBURETOR RECOMMENDATIONS

0-805085 (750 CFM); 0-4779S (750 CFM)

### INSTALLATION NOTES

Lunati camshaft and lifter kit available under P/N 03001LK

### SPECIFICATIONS

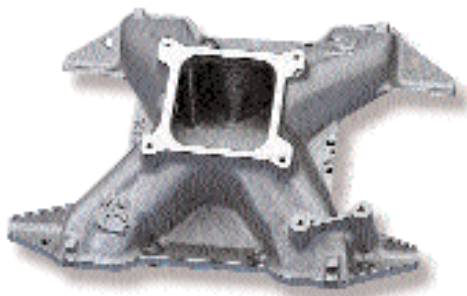
Height - frt. 4.13", rr. 5.25"  
Port size: 2.14" height; 1.12" width

### Features

- Single plane manifold design
- 1500-6500 RPM power band
- Provision for EGR and choke
- Universal flange carburetor mounting



**"Biggest average numbers" in July 2002 Mopar Muscle magazine manifold shoot-out!**



413, 426 Wedge and 440 V8

7534<sup>(B)</sup>

### HOLLEY CARBURETOR RECOMMENDATIONS

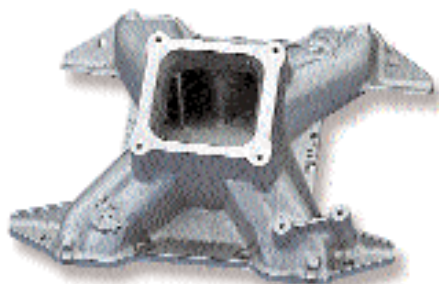
750 - 850 CFM Holley HP

### SPECIFICATIONS

Height - frt. 4.38", rr. 5.31".  
Shipping weight is 16 lbs.  
Port size: 2.18" height; 1.14" width

### Features

- 3000-7800 RPM power band
- Single plane design with open/isolated plenum
- Large plenum chamber
- Square flange carburetor mounting



413, 426 Wedge and 440 V8

7538<sup>(B)</sup>

### HOLLEY CARBURETOR RECOMMENDATIONS

4500 DOMINATOR HP

### SPECIFICATIONS

Height - frt. 5.38", rr. 6.31".  
Shipping weight is 19 lbs.  
Port size: 2.21" height; 1.23" width

### Features

- 3200-8000 RPM power band
- Single plane design with open/isolated plenum
- Large plenum chamber
- 4500 DOMINATOR® carburetor flange mounting



(B) Not legal for sale or use in California on any pollution controlled motor vehicles

(C) Not legal for street use with a 4-barrel in California on vehicles equipped with a 2-barrel carburetor, for which there was no 4-barrel option.

or See page 4 for symbol explanation.

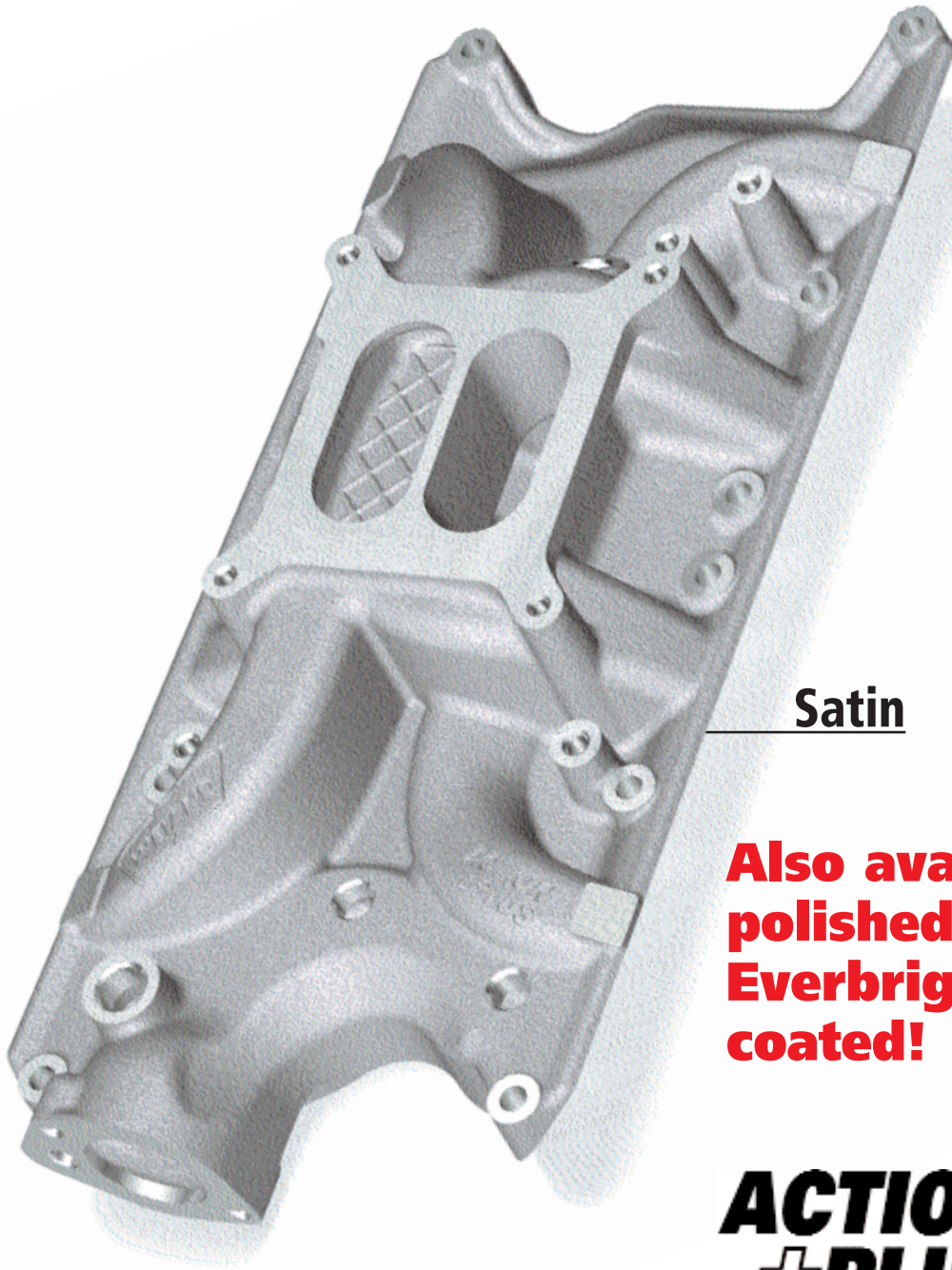
# MANIFOLDS

Action plus™ - Ford Small Block



**NEW!**

## **ACTION PLUS™ INTAKE MANIFOLD** **- FORD SMALL BLOCK V8**

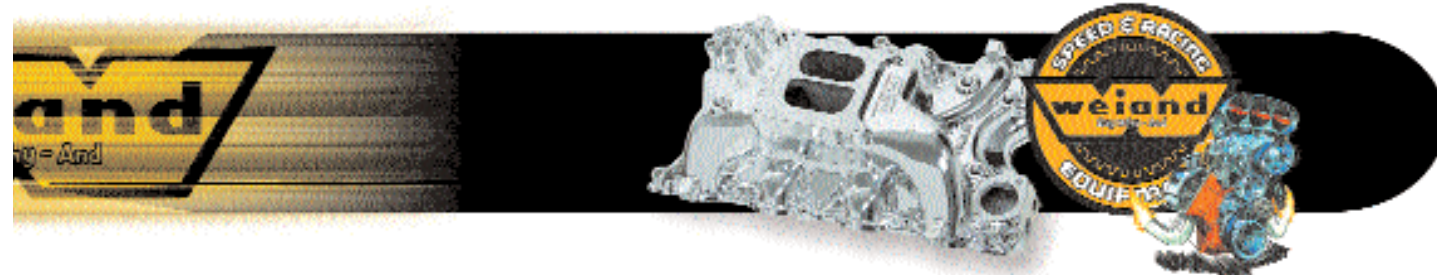


Satin

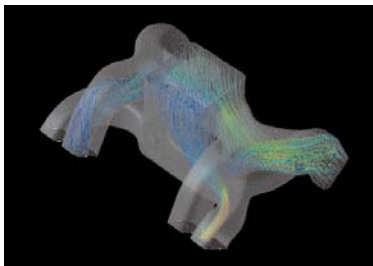
**Also available  
polished or  
Everbright™  
coated!**

**ACTION  
+PLUS**





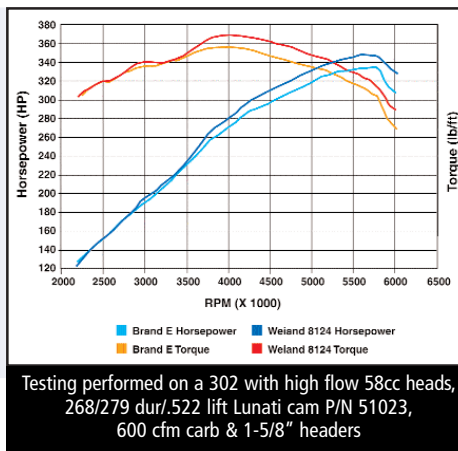
# ACTION +PLUS



Completely new designs optimized for today's bigger engines! Industry leading Computational Fluid Dynamics (CFD) airflow design software utilized for optimized air/fuel distribution and power.

Looking for the ultimate in high performance street intakes? A lot has changed in the performance world since the time many of the manifolds on the market were introduced 20+ years ago. With the popularity of larger stroker engines and more efficient cylinder head/cam designs has come a need for manifolds to support these larger displacements. Weiland recognized this and has developed a new line of Action Plus™ manifolds designed with Computational Fluid Dynamics (CFD) to generate maximum horsepower and torque out of today's engines. Don't believe it? Check out the dyno chart to see what you're missing under your hood. Compare us to the competition. When you see the power, quality and value pricing of Weiland manifolds, it won't be a tough choice.

Dyno testing of the new Weiland 8124 found an additional 14 peak HP and 13lb/ft torque over brand E – p/n 2121. Average torque was increased by 9.5 and HP by 8.5 from 2,200 to 6,000 RPM!



## FEATURES/BENEFITS:

- Low rise/dual plane design builds maximum torque for street performance engines
- Permanent mold casting process for lighter, smoother, better looking and more consistent castings
- Available in satin, polished and Everbright™ coated
- Fully CNC machined for a perfect fit
- Square bore carburetor flange
- Exhaust crossover for improved street drivability

## RECOMMENDED ACCESSORIES

- Holley Street Avenger™ carb series in 570 or 670 CFM
- Universal Carburetor Installation Kit, p/n 20-124

## INSTALLATION NOTES

- Has additional vacuum tap off of runner for brake boosters/AC needs
- Recommended Fel-Pro gasket number: 1250

## SPECIFICATIONS

- Power band: Idle to 5500RPM
- Overall Height - frt. 3.82", rr. 4.75"
- Weight is 14 lbs.
- Port size: 1.82" height; 1.02" width

Application	NEW!	Satin	Polished	Everbright™
289-302 Ford Small Block		8124 <sup>(C)</sup> 3	8124P <sup>(C)</sup> 3	8124C <sup>(C)</sup> 3

# AVAILABLE LATE SUMMER 2006!

(C) Not legal for street use with a 4-barrel in California on vehicles equipped with a 2-barrel carburetor, for which there was no 4-barrel option.

1 2 or 3 See page 4 for symbol explanation.

Tech Line: 270-781-9741

# MANIFOLDS

Ford - Small Block, 351 Windsor



## FORD SMALL BLOCK V8

Part #



**NEW!**

**EVERBRIGHT™**  
COATED

### Features

- High rise/ dual plane design
- 1500-6800 RPM power band
- No EGR provision
- Square flange carburetor mounting
- Lunati camshaft and lifter kit available under P/N 06002LK

221, 260, 289, 302 V8 (Exc. BOSS)

### HOLLEY CARBURETOR RECOMMENDATIONS

0-804575 (600 CFM); 0-47775 (650 CFM)

### INSTALLATION NOTES

Fits GT-40 and TFS heads. Will NOT fit 255 or 351W engines. Manifold has a rear water crossover.

### SPECIFICATIONS

Height - frt. 4.35", rr. 5.59"  
Shipping weight is 20 lbs.  
Port size: 1.83" height; 1.02" width

**8020**<sup>(C)</sup> **3**  
(Satin)

**8020C**<sup>(C)</sup> **3**  
(Everbright™)



**NEW!**

**EVERBRIGHT™**  
COATED

### Features

- low rise/ dual plane design
- Idle-5500 RPM power band
- No EGR provision
- Square flange carburetor mounting
- Exhaust crossover for improved street drivability
- Lunati camshaft and lifter kit available under P/N 51023LK

221, 260, 289, 302 V8 (Exc. BOSS)

### HOLLEY CARBURETOR RECOMMENDATIONS

0-80570 (570 CFM Street Avenger Carburetor)  
0-80670 (670 CFM Street Avenger Carburetor)  
20-124 (Universal Carburetor Installation Kit)

### INSTALLATION NOTES

Has additional vacuum tap off of runner fro brake boosters/AC needs. Recommended Fel-Pro gasket number: 1250.

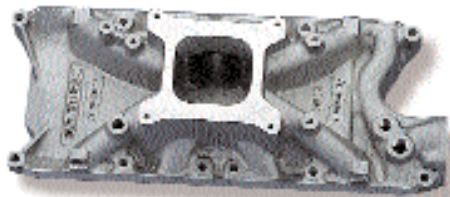
### SPECIFICATIONS

Height - frt. 3.82", rr. 4.75"  
Shipping weight is 14 lbs.  
Port size: 1.82" height; 1.02" width

**8124**<sup>(C)</sup> **3**  
(Satin)

**8124P**<sup>(C)</sup> **3**  
(Polished)

**8124C**<sup>(C)</sup> **3**  
(Everbright™)



221, 260, 289, 302 V8 (Exc. BOSS)

### HOLLEY CARBURETOR RECOMMENDATIONS

650 - 750 CFM Holley HP

### INSTALLATION NOTES

Will NOT fit 255 or 351W motors. Spacer plate w/ plenum divider, P/N 7460 can be used to develop more low RPM vacuum.

### SPECIFICATIONS

Height - frt. 3.75", rr. 4.88".  
Shipping weight is 18 lbs.  
Port size: 1.90" height; 1.09" width

**7515**<sup>(B)</sup> **3**

**X-CELerator**



### Features

- 1500-7000 RPM power band
- Single plane/open plenum design
- Square flange carburetor mounting

(B) Not legal for sale or use in California on any pollution controlled motor vehicles

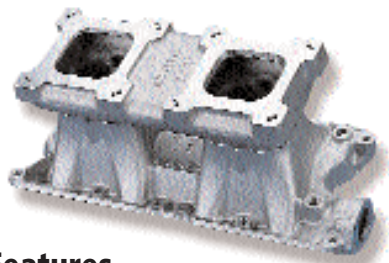
(C) Not legal for street use with a 4-barrel in California on vehicles equipped with a 2-barrel carburetor, for which there was no 4-barrel option.

or See page 4 for symbol explanation.



## FORD SMALL BLOCK V8

Part #



289, 302 V8

1988<sup>(B)</sup>

### HOLLEY CARBURETOR RECOMMENDATIONS

600 - 750 Holley HP

### INSTALLATION NOTES

Stock electronic ignition will NOT clear.

### SPECIFICATIONS

Height - frt. 8.81", rr. 9.25".  
Shipping weight is 24 lbs.  
Port size: 1.85" height; 1.02" width

### Features

- 2500-8000 RPM power band
- 2 x 4 carburetor setup
- Square flange carburetor mounting
- Large plenum chamber
- Separate tops, runners and gaskets available

**Hi-Ram**



300-74S

5.0L EFI  
1986-93 Passenger Car  
EO# D115-11

### INSTALLATION NOTES

Check out Holley's new line of high-flow throttle bodies, in-tank fuel pumps, adjustable regulators, cylinder head and camshafts for the Ford 5.0L EFI passenger engine.

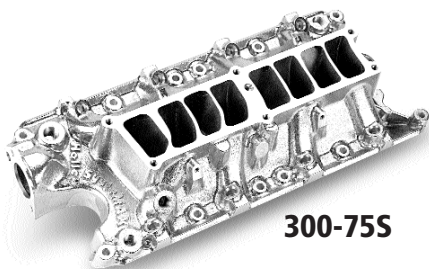
### SPECIFICATIONS

Shipping weight is 45 lbs.  
Height - frt. 10.625", rr. 10.625"

**300-72S**   
(Upper & Lower manifold kit)  
Vibratory Polished Shiny Finish

**300-74S**  
(upper manifold only)

**300-75S**  
(lower manifold only)



300-75S

### Features

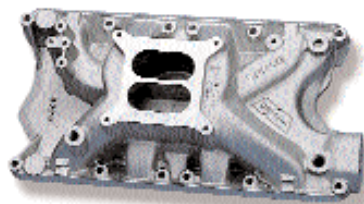
- 2000-6500 RPM power band
- Retains stock injector and water outlet locations
- External EGR passage maximized port and runner sizes
- Maximum unrestricted air flow
- Lower manifold ports match up to Holley cylinder head
- Vibratory polished shiny finish



**Don't be fooled by its California emission-legal designation. This manifold will flow air like no other street/strip manifold. It's fully machined and ready to bolt on an engine.**

## FORD 351 WINDSOR V8

Part #



351W V8

8023<sup>(C)</sup>

### HOLLEY CARBURETOR RECOMMENDATIONS

0-80457S (600 CFM); 0-4777S (700 CFM)

### INSTALLATION NOTES

Fits GT-40 and TFS heads.

### SPECIFICATIONS

Height - frt. 4.37", rr. 5.06".  
Shipping weight is 22 lbs.  
Port size: 1.82" height; 1.05" width

### Features

- High rise/dual plane design
- 1500-6800 RPM power band
- No EGR provision
- Square flange carburetor mounting

**STEALTH**

**MEGA APPROVED**

(B) Not legal for sale or use in California on any pollution controlled motor vehicles

(C) Not legal for street use with a 4-barrel in California on vehicles equipped with a 2-barrel carburetor, for which there was no 4-barrel option.

or See page 4 for symbol explanation.

# MANIFOLDS

Ford - 351 Windsor, Cleveland, 351M, 400,  
FE BB & 429, 460 Big block



## FORD 351 WINDSOR V8

Part #



351W V8

8023C<sup>(C)</sup> 3

### HOLLEY CARBURETOR RECOMMENDATIONS

0-80457S (600 CFM); 0-4777S (700 CFM)

### INSTALLATION NOTES

Fits GT-40 and TFS heads.

### SPECIFICATIONS

Height - frt. 4.37", rr. 5.06".  
Shipping weight is 22 lbs.  
Port size: 1.82" height; 1.05" width

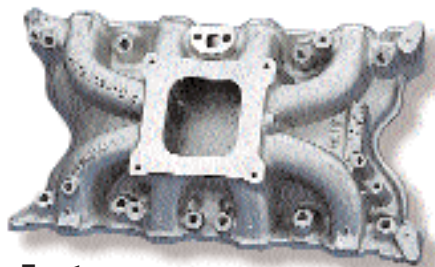


### Features

- High rise/dual plane design
- 1500-6800 RPM power band
- No EGR provision
- Square flange carburetor mounting
- High luster silver finish matches chrome & polished aluminum
- Heat, salt & gasoline resistant
- All the looks without the work and maintenance of polished aluminum

## FORD 351 CLEVELAND V8

Part #



351C V8 (Including BOSS)

7516<sup>(C)</sup> 3  
2V Heads

### HOLLEY CARBURETOR RECOMMENDATIONS

0-80457S (2V heads); 0-80508S (4V heads);  
0-4777S (2V heads); 0-4779S (4V heads)

### INSTALLATION NOTES

If using an automatic transmission, or if additional low-end vacuum is desired, order P/N 7460 spacer plate with plenum divider.

### SPECIFICATIONS

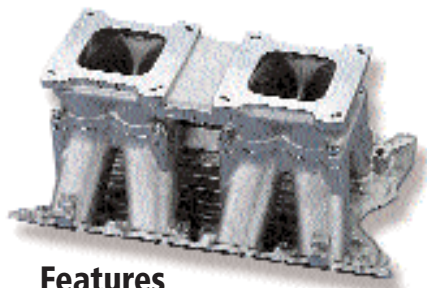
Height - frt. 4.00", rr. 5.00".  
Shipping weight is 22 lbs.  
Port size: (7516) 2.02" height; 1.48" width  
(7517) 2.44" height; 1.56" width

7517<sup>(C)</sup> 3  
4V Heads

**X-CELerator**

### Features

- Single plane design
- 1500-7000 RPM power band
- No EGR provision
- Square flange carburetor mounting



351C V8 (Including Boss)

1994<sup>(B)</sup> 3

### HOLLEY CARBURETOR RECOMMENDATIONS

700 - 850 CFM Holley HP

### INSTALLATION NOTES

Stock electronic ignition will NOT clear.

### SPECIFICATIONS

Height - frt. 8.81", rr. 9.18".  
Shipping weight is 26 lbs.  
Port size: 2.36" height; 1.63" width

**Hi-Ram**

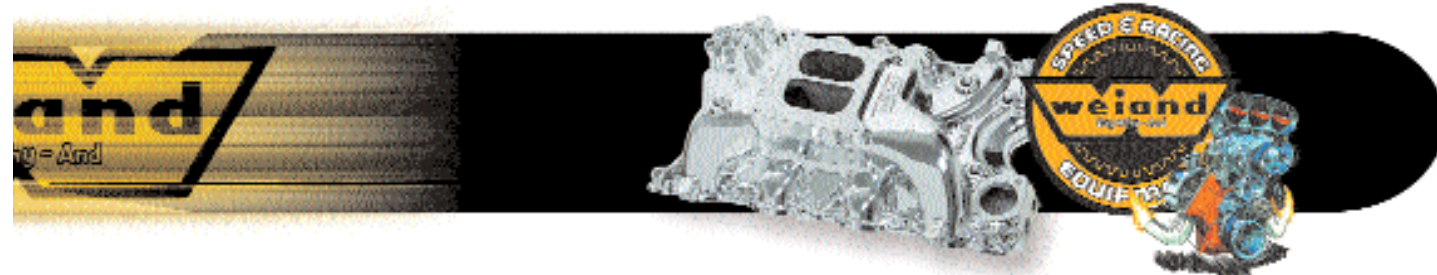
### Features

- 3200-9000 RPM power band
- Fits 4V heads
- 2 x 4 carburetor setup
- Large plenum design w/ individual runners
- Square flange carburetor mounting
- Separate tops, runners and gaskets available
- Can install on 351M/400 engines with spacer kit

(B) Not legal for sale or use in California on any pollution controlled motor vehicles

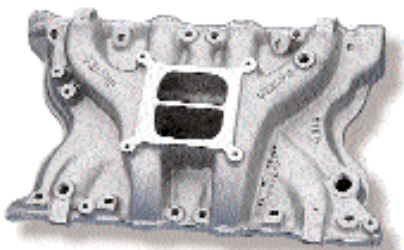
(C) Not legal for street use with a 4-barrel in California on vehicles equipped with a 2-barrel carburetor, for which there was no 4-barrel option.

1 2 or 3 See page 4 for symbol explanation.



## FORD 351M, 400 V8

Part #



351M/400 V8 (2V Heads)

**8010**<sup>(C)</sup> **3**  
(w/o EGR)

### HOLLEY CARBURETOR RECOMMENDATIONS

0-80457S (600 CFM); 0-4778S (700 CFM).

### INSTALLATION NOTES

Lunati camshaft and lifter kit available under P/N 00090LK

### SPECIFICATIONS

Height - frt. 3.75", rr. 4.75".  
Shipping weight is 24 lbs.  
Port size: 1.85" height; 1.32" width

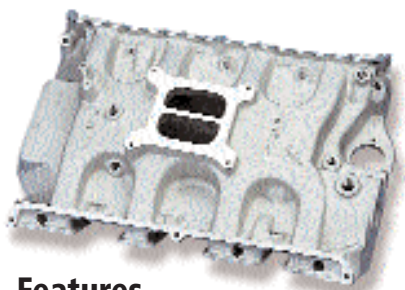
**ACTION  
+PLUS**

### Features

- High rise/dual plane design
- Idle-5500 RPM power band
- Square flange carburetor mounting

## FORD FE BIG BLOCK V8

Part #



332, 352, 360, 390, 406, 410, 427, 428 V8

**7282**<sup>(C)</sup> **3**

### HOLLEY CARBURETOR RECOMMENDATIONS

0-80457S (600 CFM); 0-80508S (750 CFM);  
0-4778S (700 CFM); 0-4779S (750 CFM)

### INSTALLATION NOTES

Fits engines only with the following port size: height 1.93", width 1.34".  
Manifold has heat crossover passage.

### SPECIFICATIONS

Height - frt. 3.93", rr. 5.68".  
Shipping weight is 27 lbs.  
Port size: 1.84" height; 1.30" width

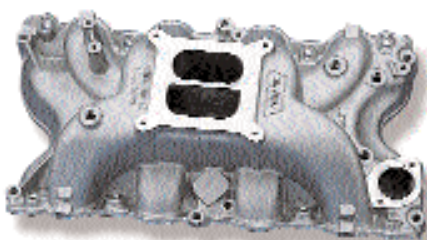
**Hi-Rise**

### Features

- Single plane design
- Idle-6000 RPM power band
- No EGR provision
- Square flange carburetor mounting

## FORD 429, 460 BIG BLOCK V8

Part #



429 (wedge), 460 V8

**8012**<sup>(C)</sup> **3**

### HOLLEY CARBURETOR RECOMMENDATIONS

0-80508S (750 CFM); 0-4780S (800 CFM); 0-4781S (850 CFM)

### INSTALLATION NOTES

Does not fit 1988-later cylinder head design.  
Port-matching manifold to heads is necessary for best performance results.

### SPECIFICATIONS

Height - frt. 5.25", rr. 6.75".  
Shipping weight is 25 lbs.  
Port size: 2.15" height; 1.89" width

**STEALTH**

### Features

- High rise/dual plane design
- 1500-6800 RPM power band
- No EGR provision
- Square flange carburetor mounting

Tech Line: **270-781-9741**

**41**

# MANIFOLDS

## Ford - 429, 460, Spacer Kits & Gaskets



### FORD 429, 460 BIG BLOCK V8

Part #



429 (wedge), 460 V8

8012C<sup>(C)</sup> 3

**HOLLEY CARBURETOR RECOMMENDATIONS**  
0-80508S (750 CFM); 0-4780S (800 CFM); 0-4781S (850 CFM)

**INSTALLATION NOTES**

Does not fit 1988-later cylinder head design.  
Port-matching manifold to heads is necessary for best performance results.

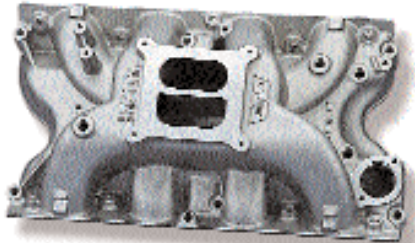
**SPECIFICATIONS**

Height - frt. 5.25", rr. 6.75".  
Shipping weight is 25 lbs.  
Port size: 2.15" height; 1.89" width



**Features**

- High rise/dual plane design
- 1500-6800 RPM power band
- No EGR provision
- Square flange carburetor mounting
- High luster silver finish matches chrome & polished aluminum
- Heat, salt & gasoline resistant
- All the looks without the work and maintenance of polished aluminum



429 Wedge, 460 V8  
Cobra Jet & Super Cobra Jet heads

8021<sup>(C)</sup> 3

**HOLLEY CARBURETOR RECOMMENDATIONS**  
0-80508S (750 CFM); 0-4781S (850 CFM)

**INSTALLATION NOTES**

Port-matching manifold to heads is necessary for best performance results.

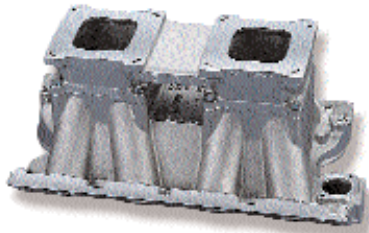
**SPECIFICATIONS**

Height - frt. 5.25", rr. 6.75".  
Shipping weight is 25 lbs.  
Port size: 2.49" height; 2.20" width



**Features**

- High rise/dual plane design
- 1500-6800 RPM power band
- No EGR provision
- Square flange carburetor mounting



429 Wedge, 460 V8  
Cobra Jet & Super Cobra Jet heads

1993<sup>(B)</sup> 3

**HOLLEY CARBURETOR RECOMMENDATIONS**  
750 - 850 CFM Holley HP

**INSTALLATION NOTES**

Port-match the manifold to the cylinder heads for best performance results.

**SPECIFICATIONS**

Height - frt. 9.93", rr. 10.31".  
Shipping weight is 33 lbs.  
Port size: 2.05" height; 1.83" width



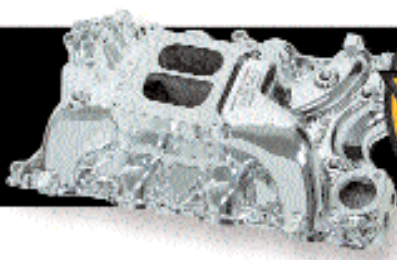
**Features**

- 2800-9000 RPM power band
- 2 x 4 carburetor setup
- Large plenum design w/ individual runners
- Square flange carburetor mounting
- Separate tops, runners and gaskets available

(B) Not legal for sale or use in California on any pollution controlled motor vehicles

(C) Not legal for street use with a 4-barrel in California on vehicles equipped with a 2-barrel carburetor, for which there was no 4-barrel option.

1 2 or 3 See page 4 for symbol explanation.



# INTAKE MANIFOLD ACCESSORIES

Part #



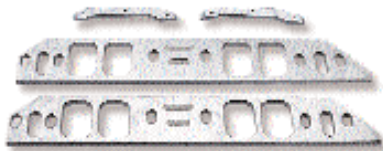
8206

## SPACER KITS

### Chevrolet standard big block manifold to Chevrolet tall deck (oval port)

8206

This intake manifold spacer kit allows the use of any high performance big block Chevrolet manifold on late model Chevrolet "tall deck" truck engines. This spacer fits in the gap created by the taller deck height of the truck blocks. **NOTE:** Due to the increased manifold height, use of an aftermarket distributor is necessary. Spacer plate thickness: .375". Shipping weight is 4 lbs.



8204

### Chevrolet standard big block manifold to Chevrolet tall deck (rectangular port)

8204

This intake manifold spacer kit allows the use of any high performance big block Chevrolet manifold on late model Chevrolet "tall deck" truck engines. This spacer fits in the gap created by the taller deck height of the truck blocks. **NOTE:** Due to the increased manifold height, use of an aftermarket distributor is necessary. Spacer plate thickness: .375". Shipping weight is 4 lbs.

**NOTE:** Notches for manifold bolts between ports have been eliminated from these spacer plates.



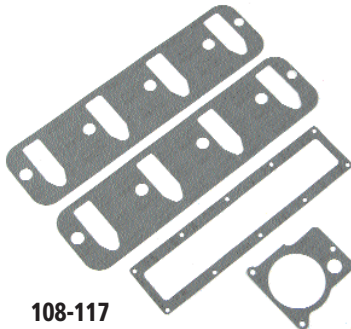
108-80

## GASKET

Systemax II Upper and Lower Manifold

108-80

Kormetal gasket used between the Holley Systemax II Ford 5.0L upper and lower manifolds.



108-117

## LS1 GASKET KIT

Includes port, lower cover and throttle body gaskets

108-117



301-44

## INTAKE MANIFOLD INSTALLATION KIT

Ford Systemax II Upper and Lower Manifold

301-44

Kit contains the necessary items needed to install the Holley Systemax II upper and lower manifolds on a 5.0L H.O. engine.

**Note:** This kit is not required for manifolds manufactured after 2/01/2002 with internal EGR.

# MANIFOLDS

## Choke Kits, Linkages & Adapters



### INTAKE MANIFOLD ACCESSORIES

Part #



9003

#### Intake Manifold Choke Kits

Choke block-off pad for some Chevrolet small block engine intake manifolds.

**301-20**



301-20

Choke adapter allows use of horizontal-mount choke element on Chevrolet manifolds with angle-mount-type choke elements.

**9003**



9001

#### EGR Block-off Plates

EGR block-off plate for Chevrolet small block manifolds.

**9007**

EGR Block-off plates for 300-111 LS-1 manifolds - Satin

**9001**

EGR Block-off plates for 300-111 LS-1 manifolds - Polished

**9001P**



9007

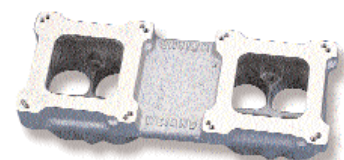
#### 2 x 4 Tunnel Ram Carburetor Linkage Kits

2 x 4 carburetor linkage kits utilize spherical rod bearings with stainless steel splined shafts. They are infinitely adjustable and easy to install. They all are designed to fit Holley® Double Pumper™ carburetors.



4021

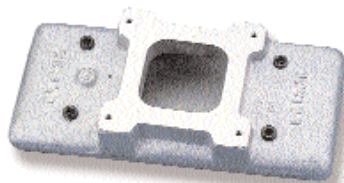
LINKAGE PART #	APPLICATION	MOUNTING STYLE	CARBURETOR MODEL
4000	Universal	in-line	square bore
4021	Chevrolet 262-400	side-by-side	square bore
4022	Chevrolet 396-454-502	side-by-side	square bore
4023	Chrysler all (exc. Hemi)	side-by-side	square bore
4025	Ford 289-302 (inc. BOSS) & 351C	side-by-side	square bore
4027	429 Wedge & 460	side-by-side	square bore
4032	Chevrolet 396-454-502	side-by-side	DOMINATOR



1913

#### Weiand Hi-Ram Intake Manifold Components

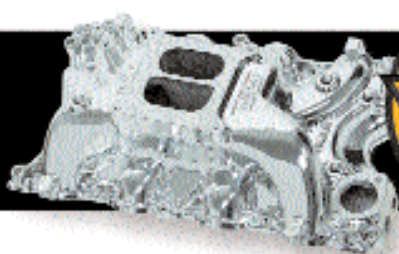
MANIFOLD PART #	TOP ONLY	CENTER-TO-CENTER DIMENSION	GASKETS
1981	1913	9-11/16"	8985
1984		8-3/4"	8984
1985	1913	9-11/16"	8985
1987	1913	9-11/16"	8985
1988		8-3/4"	8984
1993		9-7/8"	8990
1994	N/A	8-3/4"	8994
1995	N/A	9"	8990
2993*	N/A	9-7/8"	8990
3981*	N/A	N/A	8985
3984	1932	N/A	8984
3985*		N/A	8985
3987*		N/A	8985
	1932	N/A	8984



1932

\* Listed for service gaskets only





# INTAKE MANIFOLD ACCESSORIES

Part #

## ADAPTERS



17-43

**2300 flange to large Rochester 2GC**

**17-43**

Open. Cast aluminum

**Square flange to spread bore**

**17-6**

This adapter will allow any 4150 or 4160 carburetor to be mounted on manifolds designed originally for Rochester Quadra-Jet or Carter Thermo-Quad carburetors. It can also be used in reverse. Cast aluminum



17-6

**Square flange to DOMINATOR**

**7539**

2" height

This adapter will allow any 4150 or 4160 carburetor to be mounted on a manifold designed originally for a DOMINATOR carburetor. Cast aluminum

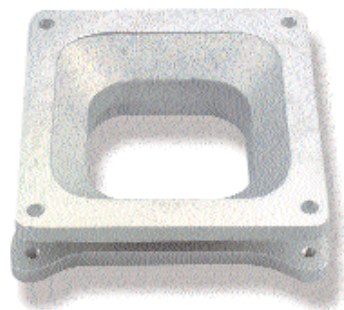
**DOMINATOR to square bore**

2-1/4" height

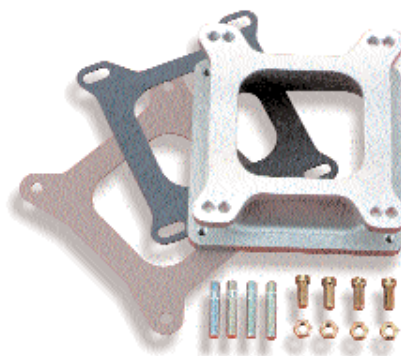
**17-9**

2" height

These adapters allow a DOMINATOR carburetor to be mounted on a manifold designed originally for a 4150 or 4160 carburetor. Cast aluminum



7539



17-9

INTAKE MANIFOLD SERV. PARTS

Tech Line: **270-781-9741**

# MANIFOLDS



Spacers, Plenum dividers & Sealing plate

## INTAKE MANIFOLD ACCESSORIES

Part #

### SPACERS

#### SPREAD BORE

Phenolic  
5/8" height

**108-37**



**108-37**

#### 2300 FLANGE

Phenolic  
1-11/16" bores  
1" height

**17-72**

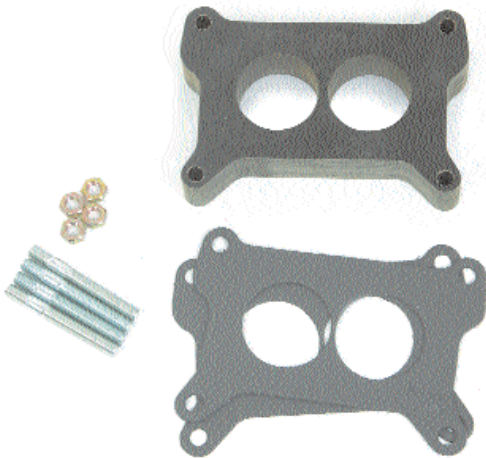
#### 4150 FLANGE

Phenolic  
1-9/16" bores  
1/2" height

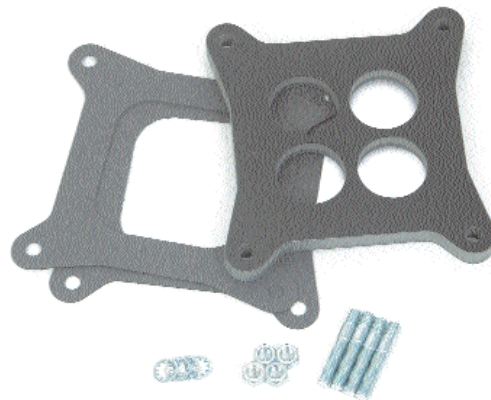
**17-59**

Phenolic  
Open  
1/2" height

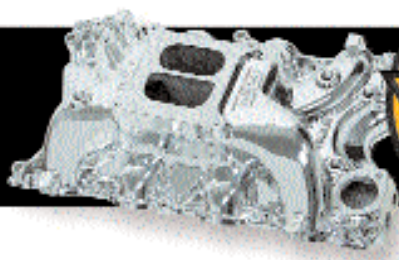
**17-62**



**17-72**



**17-59**



# INTAKE MANIFOLD ACCESSORIES



17-27



17-34



17-57

**NOTE:** Spacer mounts with taper side up & must trim 4-hole gasket to uncover grooves in plate

## SPACERS

### 4150/AFB FLANGE

Cast aluminum

Open  
1" height **17-27**

4-hole  
1" height **17-34**

1" height **7465**

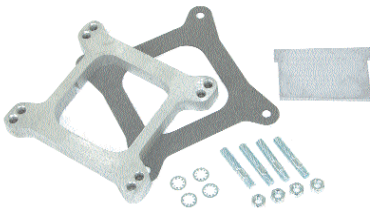
### DOMINATOR FLANGE

Cast aluminum shear plate  
w/ 7° tapered bore **17-57**

Phenolic  
Open  
1" height **17-70**

## PLENUM DIVIDER KITS & PLATE

Part#



7460



9008

**SQUARE BORE FLANGE** **7460**

Allows the use of a plenum divider on an open plenum manifold. **WARNING:** Do not use on manifold with "angle-mounted" carburetor. Cast aluminum. 5/8" height

**Plenum Divider Plate** **9008**

Used in manifold P/N 7546

## SEALING PLATE

Part #



**SPREAD BORE TO SQUARE BORE FLANGE** **9006**

1/16" height  
Allows a square bore carburetor to mount directly to a spread bore manifold with dual bolt pattern and seal properly.

INTAKE MANIFOLD SERV. PARTS

# MANIFOLDS

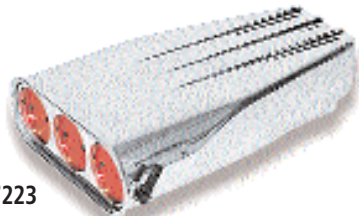
## Air scoops & Air cleaners



### INTAKE MANIFOLD ACCESSORIES



7221



7223



93157

#### HOLLEY CARBURETOR AIR SCOOPS

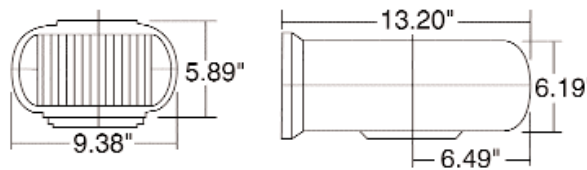
- Aluminum castings
- Designs are available to fit either 1x4 or 2x4 carburetor installations (5-1/8" necks)
- Enderle style has ball-bearing butterfly assembly for smooth operation
- Bases are adjustable to accommodate 8-1/2" to 10" center-to-center carburetor spacings
- Looks great on a supercharger installation or can be used on carburetor alone
- Includes air cleaner(s)

APPLICATION	Part#
Weiland Hilborn-style (1x4) Dimensions: 13" x 10" x 6"	7220 <sup>®</sup> ♦
Weiland Hilborn-style (2x4) Dimensions: 20.5" x 10" x 6"	7221 <sup>®</sup> ♦
Weiland Enderle-style (1x4) Dimensions: 15.8" x 13.3" x 4.8"	7222 <sup>®</sup> ♦
Weiland Enderle-style (2x4) Dimensions: 20.5" x 13.3" x 4.8"	7223 <sup>®</sup> ♦

#### HOLLEY MEGASCOOP CARBURETOR AIR SCOOP

- Great custom low profile look (13.2" x 9.3" x 5.4")
- Highly polished aluminum casting
- Single large opening for maximum air intake
- Designed to fit 1x4 carburetor installation (5-1/8" neck)
- Can be used on carburetor alone or with a blower

APPLICATION	Part#
1x4 carburetor	93157 <sup>®</sup> ♦
Replacement filter element	93156 <sup>®</sup> ♦



108-4



17-13



17-14

#### CARBURETOR AIR HORN GASKETS

APPLICATION	Part#
5" diameter x .060"	108-4
5" diameter x .200"	108-62
7" diameter x .060"	108-73

#### AIR CLEANER SPACERS

APPLICATION	Part#
5" diameter x 1-3/8" high	17-13
5" diameter x 3/4" high	17-14



93156



3010

#### AIR CLEANER/AIR SCOOP FILTER ELEMENTS

APPLICATION	Part#
Replacement filter for Weiland's Enderle- and Hilborn-style air scoops	3010
Replacement filter for Holley MegaScoop air cleaner	93156
Replacement filter for Holley Hi Tek air cleaner	90633