



JAGUAR

XK SPECIFICATION AND PRICE GUIDE

JAGUAR

XK 4

XK PORTFOLIO 8

XKR 12

XKR-S 16

PERFORMANCE SEAT 20

PERFORMANCE OPTIONS 22

ACCESSORIES 36





X K R A N G E

XK, XK PORTFOLIO, XKR AND THE STUNNING XKR-S.

The newly redesigned Jaguar XK range offers even greater performance, luxury and individuality. Sleek styling and sculpted surfaces cut through the air with ruthless aerodynamic efficiency. Superb dynamics make the driving experience both exciting and rewarding. Beneath the surface, the lightweight, aerospace-inspired aluminium body combines strength with rigidity to deliver taut, agile handling as well as straight-line performance. Inside, driver-focused technologies and an expansive choice of finely crafted interiors create an environment that is uniquely Jaguar. And, of course, at the core of each model is the power, refinement and efficiency of Jaguar's acclaimed 5.0 Litre V8, now available in three power outputs. The new XK range takes the Jaguar sports car experience to exhilarating new heights.



XK



PERFORMANCE

5.0 V8 385PS PETROL COUPE

TORQUE Nm – 515

TOP SPEED mph – 155

0 - 60 mph SECONDS – 5.2

CARBON DIOXIDE EMISSIONS g/km – 264

URBAN mpg – 16.5

EXTRA URBAN mpg – 35.3

COMBINED mpg – 25.2

5.0 V8 385PS PETROL CONVERTIBLE

TORQUE Nm – 515

TOP SPEED mph – 155

0 - 60 mph SECONDS – 5.3

CARBON DIOXIDE EMISSIONS g/km – 264

URBAN mpg – 16.5

EXTRA URBAN mpg – 35.3

COMBINED mpg – 25.2

MAIN FEATURES

6-speed electronic automatic transmission with Jaguar Sequential Shift™
JaguarDrive Selector™

Adaptive Dynamics

Bond grain leather

Bi-function HID Xenon headlamps with LED daytime running lights,
integrated cornering lights and automatic levelling

Jaguar Smart Key System™ with Keyless start

18" alloy wheels

Sport seats (10/10 way), variable heated with memory

7 inch colour Touch-screen display

Navigation system with DVD mapping

Cruise Control with Automatic Speed Limiter (ASL)

Front Media Interface with AUX socket USB and iPod connectivity

Bluetooth® telephone connectivity

Front and rear parking aid with Touch-screen visual indicator

Phosphor blue halo illumination and mood lighting

Premium paint

SELECTED OPTIONS

19" and 20" alloy wheels

Jaguar Smart Key System™ with Keyless start and Keyless entry

Adaptive Front Lighting with dynamic pivoting headlamps

Jaguar 525W premium sound system

Reverse park camera with guidance

Bright stainless steel pedals

Adaptive Cruise Control (ACC) with Forward Alert

Heated windscreen with timer

DAB radio receiver

PRICING

	LIST £	VAT £	RETAIL £	OTR £
5.0 V8 PETROL COUPE	52,858.33	10,571.67	63,430.00	65,000.00
5.0 V8 PETROL CONVERTIBLE	57,858.33	11,571.67	69,430.00	71,000.00

WHEELS

Standard



18" Venus

Options



19" Caravela



19" Artura



19" Tamana



20" Kalimnos



XK

INTERIOR CHOICE

HOOD COLOURS

No Cost Options

Options



Black

Blue

Beige

Dark Grey

Burgundy

Dark Green

Dark Brown

VENEERS

Standard

Options



Bright Knurled Aluminium

Satin American Walnut

Satin Rosewood

Burr Walnut

Satin Elm

Rich Oak

INTERIOR ENVIRONMENT

Standard

Option

HEADLINING

UPPER FACIA

SEAT TRIM
AND LEATHER



INTERIOR SHOWN
Sport seats in Warm Charcoal
with Warm Charcoal upper facia,
Bright Knurled Aluminium veneer
and Canvas headlining

Sport seats in Warm Charcoal with Warm Charcoal upper facia
and Canvas headlining

Sport seats in Caramel with Caramel upper facia
and Canvas headlining

Sport seats in Ivory with Warm Charcoal upper facia
and Canvas headlining

XK PORTFOLIO



PERFORMANCE

5.0 V8 385PS PETROL COUPE

TORQUE Nm – 515

TOP SPEED mph – 155

0 - 60 mph SECONDS – 5.2

CARBON DIOXIDE EMISSIONS g/km – 264

URBAN mpg – 16.5

EXTRA URBAN mpg – 35.3

COMBINED mpg – 25.2

5.0 V8 385PS PETROL CONVERTIBLE

TORQUE Nm – 515

TOP SPEED mph – 155

0 - 60 mph SECONDS – 5.3

CARBON DIOXIDE EMISSIONS g/km – 264

URBAN mpg – 16.5

EXTRA URBAN mpg – 35.3

COMBINED mpg – 25.2

MAIN FEATURES

IN ADDITION TO XK

Soft grain leather interior with twin needle contrast stitch

Luxury seats (16/16 way) with memory

19" alloy wheels

Bowers & Wilkins 525W surround sound system

Suedecloth premium headlining (excludes Convertible hood)

Jaguar Smart Key System™ with Keyless start and Keyless entry

Extended choice of veneer and interior combinations

Heated and cooled front seats

Heated leather steering wheel

Heated windscreen with timer

6 disc in-facia CD

SELECTED OPTIONS

Performance seats (16/16 way)

20" alloy wheels

Poltrona Frau® Jet leather headlining (Coupé)

Adaptive Front Lighting with dynamic pivoting headlamps

Reverse park camera with guidance

Bright stainless steel pedals

DAB radio receiver

PRICING

	LIST £	VAT £	RETAIL £	OTR £
5.0 V8 PETROL COUPE	57,483.33	11,496.67	68,980.00	70,550.00
5.0 V8 PETROL CONVERTIBLE	62,483.33	12,496.67	74,980.00	76,550.00

WHEELS

Standard



19" Tamana

Options



20" Kalimnos



20" Selena



20" Takoba



20" Venom Dark Grey diamond turned face*

*Available late 2011



PORTFOLIO

INTERIOR CHOICE

HOOD COLOURS

No Cost Options

Options



Black

Blue

Beige

Dark Grey

Burgundy

Dark Green

Dark Brown

VENEERS

Standard

No Cost Options

Option



Figured Ebony

Bright Knurled Aluminium

Burr Walnut

Satin Elm

Satin Rosewood

Rich Oak

Piano Black

INTERIOR ENVIRONMENT

No Cost Options

HEADLINING

UPPER FACIA

SEAT TRIM
AND LEATHER



INTERIOR SHOWN
Luxury seats in Ivory with Warm Charcoal upper facia, Ivory contrast stitch, Figured Ebony veneer and Canvas Suedecloth premium headlining

Warm Charcoal with Warm Charcoal upper facia and London Tan contrast stitch

Warm Charcoal and London Tan duo-tone with Warm Charcoal upper facia and London Tan contrast stitch†

Warm Charcoal with Warm Charcoal upper facia and Ivory contrast stitch†

Ivory* with Warm Charcoal upper facia and Ivory contrast stitch†

Ivory* with Oyster upper facia and Ivory contrast stitch

Ivory* with Slate Blue upper facia and Ivory contrast stitch

Caramel with Warm Charcoal upper facia and Caramel contrast stitch

Caramel with Caramel upper facia

Warm Charcoal with Warm Charcoal upper facia† (Performance seat only)

XKR



PERFORMANCE

5.0 V8 SUPERCHARGED 510PS PETROL COUPE

TORQUE Nm – 625

TOP SPEED mph – 155

0 - 60 mph SECONDS – 4.6

CARBON DIOXIDE EMISSIONS g/km – 292

URBAN mpg – 14.9

EXTRA URBAN mpg – 33.0

COMBINED mpg – 23.0

5.0 V8 SUPERCHARGED 510PS PETROL CONVERTIBLE

TORQUE Nm – 625

TOP SPEED mph – 155

0 - 60 mph SECONDS – 4.6

CARBON DIOXIDE EMISSIONS g/km – 292

URBAN mpg – 14.9

EXTRA URBAN mpg – 33.0

COMBINED mpg – 23.0

MAIN FEATURES

IN ADDITION TO XK

Active Differential

20" Nevis alloy wheels

Bonnet louvres with Supercharged script

Jaguar High Performance Braking System

Sports Active Exhaust with quad tailpipes

Red brake calipers

Bowers & Wilkins 525W surround sound system

Suedecloth premium headlining (Coupé only)

Jaguar Smart Key System™ with Keyless start and Keyless entry

Heated and cooled front seats

Heated windscreen with timer

Power folding exterior mirrors

XKR Aerodynamic Pack - Revised front splitter and large rear spoiler

SELECTED OPTIONS

Performance seats (16/16 way)

Reverse park camera with guidance

Poltrona Frau® Jet leather headlining (Coupé)

Adaptive Front Lighting with dynamic pivoting headlamps

XKR Speed Pack

XKR Black Speed Pack

XKR Dynamic Pack*

XKR Black Dynamic Pack*

Adaptive Cruise Control (ACC) with Forward Alert

Performance Active Exhaust with quad tailpipes

DAB radio receiver

PRICING

	LIST £	VAT £	RETAIL £	OTR £
5.0 V8 PETROL COUPE	64,150.00	12,830.00	76,980.00	78,550.00
5.0 V8 PETROL CONVERTIBLE	69,150.00	13,830.00	82,980.00	84,550.00

WHEELS

Standard



20" Nevis

Options



20" Kalimnos



20" Takoba



20" Venom Dark Grey diamond turned face*

Standard on Speed and Dynamic Packs



20" Kasuga
Standard on Speed Pack



20" Vulcan Polished*
Standard on Dynamic Pack



20" Kalimnos
Gloss Black Finish
Standard on Black Speed Pack



20" Vulcan
Gloss Black Finish*
Standard on Black
Dynamic Pack

*Available late 2011



IR



R

P R N D S

P R N D S

P R N D S

XKR

INTERIOR CHOICE

HOOD COLOURS

No Cost Options

Options



Black

Blue

Beige

Dark Grey

Burgundy

Dark Green

Dark Brown

VENEERS

Standard

No Cost Options

Option



Dark Mesh Aluminium

Dark Oak

Burr Walnut

Satin Elm

Satin Rosewood

Rich Oak

Piano Black

INTERIOR ENVIRONMENT

Standard

Options

HEADLINING

UPPER FACIA

SEAT TRIM
AND LEATHER



Warm Charcoal with Warm Charcoal upper facia†

Warm Charcoal with Warm Charcoal upper facia and Ivory contrast stitch†

Warm Charcoal with Warm Charcoal upper facia and London Tan contrast stitch

Warm Charcoal with Warm Charcoal upper facia and Red contrast stitch†

Ivory with Warm Charcoal upper facia and Ivory contrast stitch†

Warm Charcoal and London Tan duo-tone with Warm Charcoal upper facia and London Tan contrast stitch†

Warm Charcoal and Red duo-tone with Warm Charcoal upper facia and Red contrast stitch†

INTERIOR SHOWN
Luxury seats in Warm Charcoal with Warm Charcoal upper facia, Red contrast stitch, Dark Mesh Aluminium veneer and Jet Suedecloth premium headlining

Suedecloth premium headlinings are available in Jet and optional Canvas. †Available on optional Performance seats see page 21

XKR-S



PERFORMANCE

5.0 V8 SUPERCHARGED 550PS PETROL COUPE

TORQUE Nm – 680

TOP SPEED mph – 186

0 - 60 mph SECONDS – 4.2

CARBON DIOXIDE EMISSIONS g/km – 292

URBAN mpg – 14.9

EXTRA URBAN mpg – 33.0

COMBINED mpg – 23.0

MAIN FEATURES

Jaguar High Performance Braking System with Red calipers

20" Vulcan alloy wheels, forged and lightweight, dark technical finish

Revised springs, revised dampers and forged and fully machined front knuckle

Upgraded Active Differential

Upgraded Adaptive Dynamics

10mm ride height reduction

Performance Active Exhaust with quad tailpipes

Unique front bumper with twin nacelles, broad vertical side intakes and carbon fibre splitter

Extended side sills

Rear apron featuring carbon fibre diffuser

Unique rear wing with carbon fibre inlay

Performance seats with carbon and soft grain leather (16/16 way)

Bright stainless steel pedals

XKR-S tread plates

Poltrona Frau® Jet leather headlining

Unique Dark Linear Aluminium veneer

SELECTED OPTIONS

20" Vulcan alloy wheels with gloss black finish

Adaptive Front Lighting with dynamic pivoting headlamps

Reverse park camera with guidance

Tyre Pressure Monitoring System (TPMS)

Gunmetal brake calipers

DAB radio receiver

PRICING

5.0 V8 PETROL COUPE

LIST £	VAT £	RETAIL £	OTR £
79,525.00	15,905.00	95,430.00	97,000.00

WHEELS

Standard



20" Vulcan Dark
Technical Finish

Option



20" Vulcan Gloss
Black Finish



I-R-S



R-S



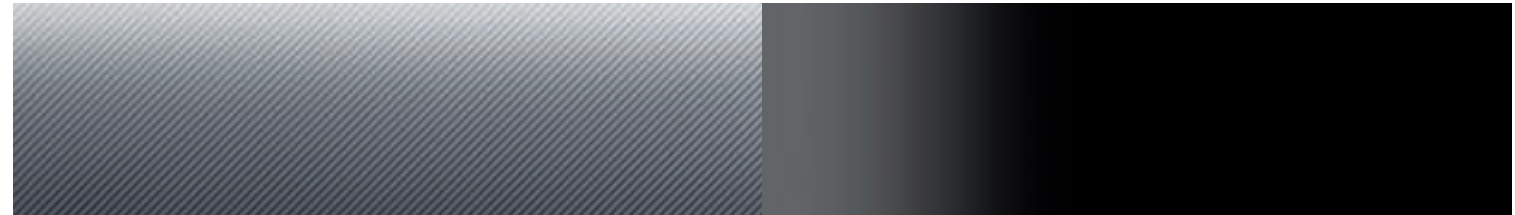
XKR - S

INTERIOR CHOICE

VENEERS

Standard

No Cost Option



Dark Linear Aluminium

Piano Black

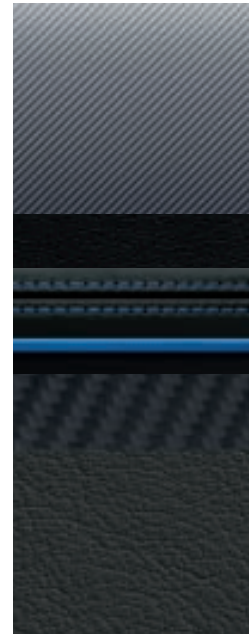
INTERIOR ENVIRONMENT

No Cost Options

HEADLINING

UPPER FACIA

SEAT TRIM
AND LEATHER



INTERIOR SHOWN
Performance seats in Warm Charcoal and carbon with Warm Charcoal upper facia and Reims Blue contrast micro-piping and stitch, Dark Linear Aluminium veneer and Poltrona Frau® Jet leather headlining

Performance seats in Warm Charcoal and carbon with Warm Charcoal upper facia and Reims Blue micro-piping and stitch*

Performance seats in Warm Charcoal and carbon with Warm Charcoal upper facia and Ivory micro-piping and stitch*

Performance seats in Warm Charcoal and carbon with Warm Charcoal upper facia and Red micro-piping and stitch*

*Poltrona Frau® Jet leather headlining

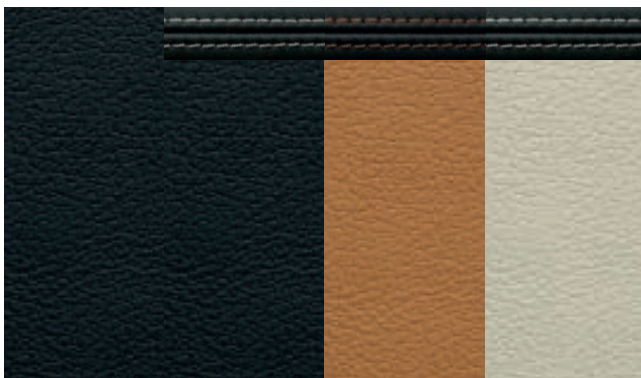


PERFORMANCE SEAT

The new Performance seat is standard on the XKR-S and available as an option on the XKR and XK Portfolio (without XKR-S logo). Designed to provide the optimum combination of lateral support and superb comfort, Performance seats feature integrated head restraints and strongly sculpted side bolsters for exceptional support during hard cornering. They are 16-way electrically adjustable and include heat and memory functionality.

INTERIOR ENVIRONMENT

XK Portfolio and XKR



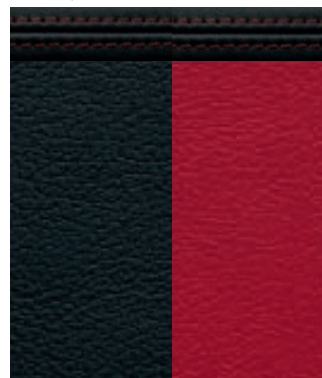
Performance seats in Warm Charcoal with Warm Charcoal upper facia

Performance seats in Warm Charcoal with Warm Charcoal upper facia and Ivory contrast stitch

Performance seats in Warm Charcoal and London Tan duo-tone with Warm Charcoal upper facia and London Tan contrast stitch

Performance seats in Ivory with Warm Charcoal upper facia and Ivory contrast stitch

XKR only



Performance seats in Warm Charcoal with Warm Charcoal upper facia and Red contrast stitch

Performance seats in Warm Charcoal and Red duo-tone with Warm Charcoal upper facia and Red contrast stitch



PERFORMANCE OPTIONS FOR **XKR**



SPEED PACK

The XKR Speed Pack, available as an option exclusively on XKR models, increases maximum speed from 155mph (250km/h) to an awe-inspiring 174mph (280km/h).

XKR Speed Pack includes:

- Increased top speed to 174mph
- Body coloured Aerodynamic Pack, side sill extensions and rear diffuser
- 20" Kasuga alloy wheels
- Red brake calipers
- Select paint palette

DYNAMIC PACK

The XKR Dynamic Pack* takes the XKR experience to another level, further extending its dynamic capabilities. (Coupé only)

XKR Dynamic Pack includes:

- Increased top speed to 174mph
- Body coloured Aerodynamic Pack, side sill extensions and rear diffuser
- Fully machined front knuckle with unique spring and damper settings
- Revised Adaptive Dynamics
- 10mm ride height reduction
- 20" Vulcan alloy wheels, forged and lightweight, in a polished finish
- Red brake calipers
- Select paint palette

EXTERIOR COLOURS



Polaris White Ultimate Black Stratus Grey Rhodium Silver Spectrum Blue Kyanite Blue Italian Racing Red

*Available late 2011.

Image shown: XKR Coupé in Stratus Grey with optional XKR Speed Pack



PERFORMANCE OPTIONS FOR **XKR**



BLACK SPEED PACK

XKR Black Speed Pack includes:

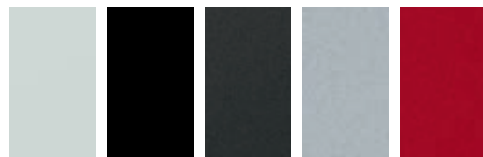
- Increased top speed to 174mph
- Body coloured Aerodynamic Pack, side sill extensions and rear diffuser
- Gloss black finish to upper and lower mesh grilles, side intakes, side power vents and boot lid finisher
- Gloss black finish to window surrounds (Convertible retains chrome window surrounds)
- 20" Kalimnos alloy wheels with gloss black finish
- Red brake calipers
- Select paint palette

BLACK DYNAMIC PACK

XKR Black Dynamic Pack* includes (Coupe only):

- Increased top speed to 174mph
- Body coloured Aerodynamic Pack, side sill extensions and rear diffuser
- 20" Vulcan alloy wheels with gloss black finish
- 10mm ride height reduction
- Red brake calipers
- Revised springs and dampers
- Revised front suspension, including forged and fully machined front knuckle, with revised rear geometry
- Revised Adaptive Dynamics
- Gloss black finish to upper and lower mesh grilles, side intakes, side power vents and boot lid finisher
- Gloss black finish to window surrounds
- Select paint palette

EXTERIOR COLOURS



Polaris White Ultimate Black Stratus Grey Rhodium Silver Italian Racing Red

*Available late 2011.

Image shown: XKR Coupé in Polaris White with optional XKR Black Speed Pack and XKR decal available as dealer fit accessory.





EXTERIOR COLOURS

STANDARD

Ebony

Polaris White
RS,SD,B

Jaguar's new colour palette has been developed to reflect the vitality and elegance of the vehicle. The Standard colours express a unique style and subtle sophistication. Jaguar also offers a further range of Metallic finishes, as well as the exclusive Special selection colours. Racing Inspired finishes evoke Jaguar's formidable sporting heritage.

RS XKR-S Colours
SD Speed and Dynamic Pack
B Black Speed and Black Dynamic Pack

*Metallic paint
†Xirallic paint

For availability please consult your local Jaguar dealer.

PREMIUM

Ultimate Black†
RS,SD,B

Botanical Green†

Stratus Grey†
RS,SD,B

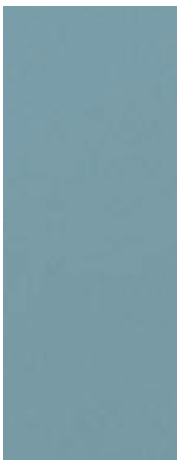
Lunar Grey*

Rhodium Silver*
SD, B

Cashmere*
Not available on XKR



Crystal Blue*



Spectrum Blue†
SD



Indigo†



Caviar†
Not available on XKR



Claret*



SPECIAL

Black Amethyst†



Kyanite Blue†
SD



RACE INSPIRED

Italian Racing Red†
RS,SD,B



French Racing Blue
RS (XKR-S ONLY)



STANDARD FEATURES

ALL MODELS

POWERTRAIN AND DRIVING DYNAMICS

6-speed electronic automatic transmission with Jaguar Sequential Shift™
JaguarDrive Selector™
JaguarDrive Control™ with Winter Mode and Dynamic Mode
Adaptive Dynamics
Cruise Control with Automatic Speed Limiter (ASL)
Electronic Brake-force Distribution (EBD)
Electric Parking Brake (EPB) – drive-away release
Dynamic Stability Control (with Trac DSC mode)

EXTERIOR FEATURES

Bi-function HID Xenon headlamps with LED daytime running lights, integrated cornering lights, and automatic levelling
LED tail lamps
Automatic headlamps
Automatic headlamp washers
Rain sensing windscreen wipers
Heated exterior mirrors with electric adjustment, power-folding with auto-powerfold on locking vehicle, auto-dimming and memory function with integrated LED side repeaters and approach lamps
Front and rear parking aid with Touch-screen visual indicator
Rear spoiler
Electronically operated Convertible hood with integrated tonneau cover (Convertible only)

INTERIOR FEATURES

Dual zone automatic climate control
Auto-dimming interior rear view mirror
Auxiliary power socket (centre console)
Twin cup holders
Front electric windows with one touch open/close and anti-trap
Trip computer with message centre
Jaguar Smart Key System™ with Keyless start
Front ashtray and lighter
Phosphor blue halo illumination and interior mood lighting
Clock in Touch-screen
Memory function for driver's and passenger seat, exterior mirrors and steering column

SAFETY AND SECURITY

Remote control central locking with dead locking and drive-away locking
Microwave intrusion sensing
Engine immobiliser
Valet mode
Anti-lock Braking System (ABS)
Emergency Brake Assist (EBA)
Roll-over Protection System (Convertible only)
Airbags front and side (driver and front passenger)
Adaptive Restraint Technology System (A.R.T.S.™)
Front and rear seat belt pre-tensioners
Front seat whiplash reduction system
Belt minder system (front seats only)
ISOFIX
Pedestrian Contact Sensing™ – Automatically deployable bonnet system
Warning triangle
First aid kit
Jaguar Tyre Repair System

MULTIMEDIA

Front Media Interface with AUX socket, USB and iPod connectivity
Windows Media Audio (WMA) and MP3 compatibility
Bluetooth® telephone connectivity
Navigation system with DVD mapping
7 inch colour Touch-screen display



OPTIONAL FEATURES

	XK	XK PORTFOLIO	XKR	XKR-S
POWERTRAIN AND DRIVING DYNAMICS				
Adaptive Cruise Control (ACC) with Forward Alert	○	○	○	-
Performance Active Exhaust with quad tailpipes (From late 2011)	-	-	○	-
Gunmetal brake calipers replacing Red	-	-	NCO	NCO
PAINT				
Special paint	○	○	○	-
Race inspired paint	○	○	○	-
VENEERS				
Bright Knurled Aluminium	-	NCO	-	-
Veneer Change (various, see trim pages for applicability)	○	NCO	NCO	-
Piano Black	-	○	○	NCO
EXTERIOR FEATURES				
Heated windscreen with timer	○	-	-	-
Adaptive Front Lighting with dynamic pivoting headlamps	○	○	○	○
Premium Convertible hood colours	○	○	○	-
Electrochromic exterior mirrors	○	-	-	-
Reverse park camera with guidance	○	○	○	○
SAFETY AND SECURITY				
Tyre Pressure Monitoring System (TPMS)*	○	○	○	○
WHEELS				
Optional Wheels	See pages 32/33			
18" space saver spare wheel	○	○	-	-
19" space saver spare wheel	-	-	○	-
INTERIOR FEATURES				
Garage door opener with overhead console remote control	○	○	○	○
Jaguar Smart Key System™ with Keyless start and Keyless entry	○	-	-	-
Automatic air recirculation with 5 settings	○	○	○	○

	XK	XK PORTFOLIO	XKR	XKR-S
INTERIOR TRIM				
Performance seats in soft grain leather (16/16 way)	-	○	○	-
Heated leather steering wheel	○	-	-	-
Jet suedecloth premium headlining	-	○	-	-
Poltrona Frau® Jet leather headlining (Coupé only)	○	○	○	-
Ivory leather	○	NCO	NCO	-
MULTIMEDIA				
Jaguar 525W premium sound system	○	-	-	-
Digital Audio Broadcasting (DAB) radio receiver (must have premium sound)	○	○	○	○
6 disc in-facia CD	○	-	-	-
PACKS				
Speed Pack	-	-	○	-
Dynamic Pack (From late 2011)	-	-	○	-
Black Speed Pack	-	-	○	-
Black Dynamic Pack (From late 2011)	-	-	○	-

○ Option NCO No Cost Option - Not available

*Tyre Pressure Monitoring system (TPMS) is not available with 18" alloy wheels

PRICING

X K	LIST £	VAT £	RETAIL £	OTR £
5.0 V8 385PS Petrol Coupé	52,858.33	10,571.67	63,430.00	65,000.00
5.0 V8 385PS Petrol Convertible	57,858.33	11,571.67	69,430.00	71,000.00
X K PORTFOLIO				
5.0 V8 385PS Petrol Coupé	57,483.33	11,496.67	68,980.00	70,550.00
5.0 V8 385PS Petrol Convertible	62,483.33	12,496.67	74,980.00	76,550.00
X K R				
5.0 V8 Supercharged 510PS Petrol Coupé	64,150.00	12,830.00	76,980.00	78,550.00
5.0 V8 Supercharged 510PS Petrol Convertible	69,150.00	13,830.00	82,980.00	84,550.00
X K R - S				
5.0 V8 Supercharged 550PS Petrol Coupé	79,525.00	15,905.00	95,430.00	97,000.00

WHEEL OPTIONS AND PRICING



18" Venus

19" Caravela

19" Artura

19" Tamana

20" Kalimnos

20" Nevis

X K

5.0 V8 385PS Petrol Coupé	●	£1,025.00	£1,025.00	£1,025.00	£2,050.00	-
5.0 V8 385PS Petrol Convertible	●	£1,025.00	£1,025.00	£1,025.00	£2,050.00	-

X K PORTFOLIO

5.0 V8 385PS Petrol Coupé	-	-	-	●	£1,025.00	-
5.0 V8 385PS Petrol Convertible	-	-	-	●	£1,025.00	-

X K R

5.0 V8 Supercharged 510PS Petrol Coupé	-	-	-	-	£515.00	●
5.0 V8 Supercharged 510PS Petrol Convertible	-	-	-	-	£515.00	●

X K R - S

5.0 V8 Supercharged 550PS Petrol Coupé	-	-	-	-	-	-
--	---	---	---	---	---	---

*Available late 2011
 **As part of Option Pack



20" Selena



20" Takoba



20" Venom Dark Grey
diamond turned face*



20" Vulcan
Dark Technical Finish



20" Kasuga**



20" Kalimnos
Gloss Black Finish**



20" Vulcan
Polished Finish**



20" Vulcan
Gloss Black Finish**

-
-

-
-

-
-

-
-

-
-

-
-

-
-

-
-

£1,025.00
£1,025.00

£1,025.00
£1,025.00

£1,535.00
£1,535.00

-
-

-
-

-
-

-
-

-
-

-
-

£515.00
£515.00

£1,025.00
£1,025.00

-
-

Speed Pack
Speed Pack

Black Speed Pack
Black Speed Pack

Dynamic Pack
Dynamic Pack

Black Dynamic Pack
Black Dynamic Pack

-

-

-

●

-

-

-

£515.00

OPTIONAL FEATURES PRICING

POWERTRAIN AND DRIVING DYNAMICS	RETAIL £	INTERIOR FEATURES	RETAIL £
Adaptive Cruise Control (ACC) with Forward Alert	1,020.00	Garage door opener with overhead console remote control	310.00
Performance Active Exhaust with quad tailpipes (From late 2011)	1,280.00	Jaguar Smart Key System™ with Keyless start and Keyless entry	430.00
Gunmetal brake calipers replacing Red	NCO	Automatic air recirculation with 5 settings	55.00
PAINT		INTERIOR TRIM	
Special paint	715.00	Performance seats in soft grain leather (16/16 way)	3,065.00
Race inspired paint	1,500.00	Heated leather steering wheel	240.00
VENEERS		Jet suedecloth premium headlining	410.00
Bright Knurled Aluminium (Portfolio only)	NCO	Poltrona Frau® Jet leather headlining (Coupé only)	2,045.00
Veneer change (R/Portfolio/XK)	NCO/NCO /360.00	Ivory leather	770.00
Piano Black (XKRS/All models)	NCO /360.00	MULTIMEDIA	
EXTERIOR FEATURES		Jaguar 525W premium sound system	840.00
Heated windscreen with timer	270.00	Digital Audio Broadcasting (DAB) radio receiver	360.00
Adaptive Front Lighting with dynamic pivoting headlamps	440.00	6 disc in-facia CD	360.00
Premium Convertible hood colours	405.00	PACKS	
Electrochromic exterior mirrors	330.00	Speed Pack	4,085.00
Reverse park camera with guidance	410.00	Dynamic Pack (From late 2011)	6,130.00
SAFETY AND SECURITY		Black Speed Pack	5,110.00
Tyre Pressure Monitoring System (TPMS)*	410.00	Black Dynamic Pack (From late 2011)	7,150.00
WHEELS			
Optional Wheels	See pages 32/33		
18" space saver spare wheel	255.00		
19" space saver spare wheel	255.00		

TECHNICAL SPECIFICATIONS

ENGINES		5.0 V8 385PS PETROL COUPÉ AJ-V8 GEN III	5.0 V8 385PS PETROL CONVERTIBLE AJ-V8 GEN III	5.0 V8 SUPERCHARGED 510PS PETROL COUPÉ AJ-V8 GEN III R	5.0 V8 SUPERCHARGED 510PS PETROL CONVERTIBLE AJ-V8 GEN III R	5.0 V8 SUPERCHARGED 550PS PETROL COUPÉ AJ-V8 GEN III R
Cylinders/Valves per Cylinder		8/4	8/4	8/4	8/4	8/4
Bore/Stroke	mm	92.5/93	92.5/93	92.5/93	92.5/93	92.5/93
Capacity	cc	5,000	5,000	5,000	5,000	5,000
Maximum power	EEC-PS (kW)	385 (283)	385 (283)	510 (375)	510 (375)	550 (405)
@rev/min		6,500	6,500	6,000-6,500	6,000-6,500	6,000-6,500
Maximum torque	EEC-Nm (lb.ft.)	515/380	515/380	625/461	625/461	680/502
@rev/min		3,500	3,500	2,500-5,500	2,500-5,500	2,500-5,500
Compression	ratio:1	11.5	11.5	9.5	9.5	9.5
Transmission		6-speed automatic	6-speed automatic	6-speed automatic	6-speed automatic	6-speed automatic
PERFORMANCE						
0-60 mph	seconds	5.2	5.3	4.6	4.6	4.2
0-100 km/h	seconds	5.5	5.6	4.8	4.8	4.4
Top speed	mph (km/h)	155 (250) limited	155 (250) limited	155 (250) limited	155 (250) limited	186 (300) limited
Top speed with XKR Speed Pack	mph (km/h)	N/A	N/A	174 (280) limited*	174 (280) limited*	N/A
FUEL CONSUMPTION ⁽¹⁾						
Urban	mpg (l/100km)	16.5 (17.1)	16.5 (17.1)	14.9 (18.9)	14.9 (18.9)	14.9 (18.9)
Extra Urban	mpg (l/100km)	35.3 (8.0)	35.3 (8.0)	33.0 (8.6)	33.0 (8.6)	33.0 (8.6)
Combined	mpg (l/100km)	25.2 (11.2)	25.2 (11.2)	23.0 (12.3)	23.0 (12.3)	23.0 (12.3)
Carbon dioxide emissions	g/km	264	264	292	292	292
Tank capacity	gals (ltr) approx.	15.5 (70.6)	15.5 (70.6)	15.5 (70.6)	15.5 (70.6)	15.5 (70.6)
WEIGHT ⁽²⁾ /DIMENSIONS						
Weight	lbs (kg)	3,651 (1,660)	3,739 (1,696)	3,865 (1,753)	3,968 (1,800)	3,865 (1,753)
Gross vehicle weight	lbs (kg)	4,575 (2,075)	4,674 (2,120)	4,729 (2,145)	4,817 (2,185)	4,729 (2,145)
Ground clearance	mm	100	100	100	100	100
Turning circle diameter	ft.in. (m)	35.8 (10.9)	35.8 (10.9)	35.8 (10.9)	35.8 (10.9)	35.8 (10.9)
Boot volume with roof up	cu.ft. (litres - VDA)	11.7 (330)	11.1 (313)	11.7 (330)	11.1 (313)	11.1 (330)
Boot volume with roof down	cu.ft. (litres - VDA)	N/A	200 (7.1)	N/A	200 (7.1)	N/A

⁽¹⁾ The fuel consumption figures were obtained in tests carried out in line with the Passenger Car Fuel Consumption and CO₂ Emissions Information Regulations 2001 (Reflecting EU Directive 80/1268/EEC as amended by 2004/3/EC). These figures are correct at time of going to press.

⁽²⁾ Please consult your local Jaguar dealer for details of charges associated with option fitment. Weights reflect vehicles to standard specifications. Optional extras increase weight.

* Maximum speed of 174mph/280km/h when XKR with Speed Pack is selected.

NOTE: The dimension details refer to a nominal car but may vary marginally from car to car due to design and production tolerances. The nominal condition has been used wherever possible. Please consult your local Jaguar dealer for details of changes associated with option fitment.

EXTERIOR ACCESSORIES



CHROME DOOR MIRRORS

Chrome mirror covers accentuate the stylish design of the XK's exterior mirrors and add further individuality to the car's unique lines and sporting character.

Mirror Cover LH - C2D5489

Mirror Cover RH - C2D5488



POLISHED EXHAUST TAILPIPE FINISHER (PAIR)

Polished stainless steel exhaust finishers add further style, sportiness and refinement to the XK. Not available for XKR. Please consult your local Jaguar dealer for availability.

Without Bodykit - C2P18000

With Bodykit - C2P18505



BONNET LOUVRES WITH CHROME STRAKES

Stunning body coloured louvres with black mesh and styled chrome inserts add further emphasis to one of the XKRs most distinctive styling features.

Available on XKR and XKR-S only.

C2P20035XXX



20" GLOSS BLACK TAKOBA ALLOY WHEELS
Front - C2P21003
Rear - C2P21004
18" Venus, 19" Caravela, 19" Artura, 19" Tamana, 20" Kalimnos and 20" Nevis alloy wheels are also available as accessories.



GROWLER BRANDED WHEEL NUTS
Enhance the look of your wheels with Jaguar Growler branded black or chrome wheel nuts.
Wheel nut kit – growler black chrome – C2D20073
Wheel nut kit – growler chrome - C2D20072



WIND DEFLECTOR
Add comfort during open top driving and reduce driver and passenger wind buffeting with the pop-up, removable wind deflector in brushed aluminium finish. Also available in black finish.
Black finish - C2P2440
Bright finish - C2P17566

INTERIOR ACCESSORIES



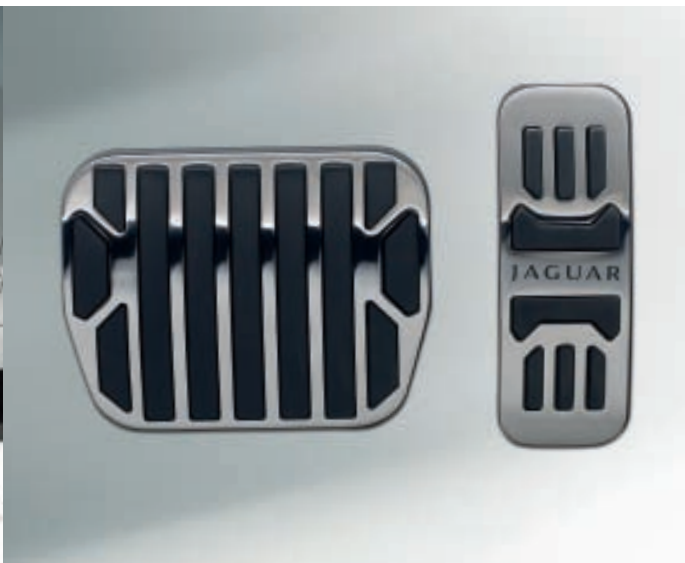
SNOW SOCK WITH WINTER TRACTION AID

An innovative lightweight textile alternative to snow chains for traction in snowy and icy conditions. Please consult your local Jaguar dealer for one correct pack to suit your wheel and tyre size.

Snowsock Pack 695 - C2D20229

Snowsock Pack 697 - C2D20230

Snowsock Pack 69J - C2D20228



SPORT PEDAL COVERS

Made from stainless steel and rubber, the pedal kit fits securely over existing pedals for a contemporary, sporting appearance. C2P17200



PREMIUM CARPET MAT SET

Luxurious, tailored 780 g/m² pile front carpet mat set with embossed Jaguar logo and nubuck edge binding. The premium mats provide a well appointed finishing touch to the interior. Available in the following colours:

Flint mat with Warm Charcoal edge and Ivory logo - C2P19087YKM

Caramel mat with Caramel edge and Warm Charcoal logo - C2P19087YHQ

Flint mat with Ivory edge and Ivory logo (not shown) - C2P19087YLD



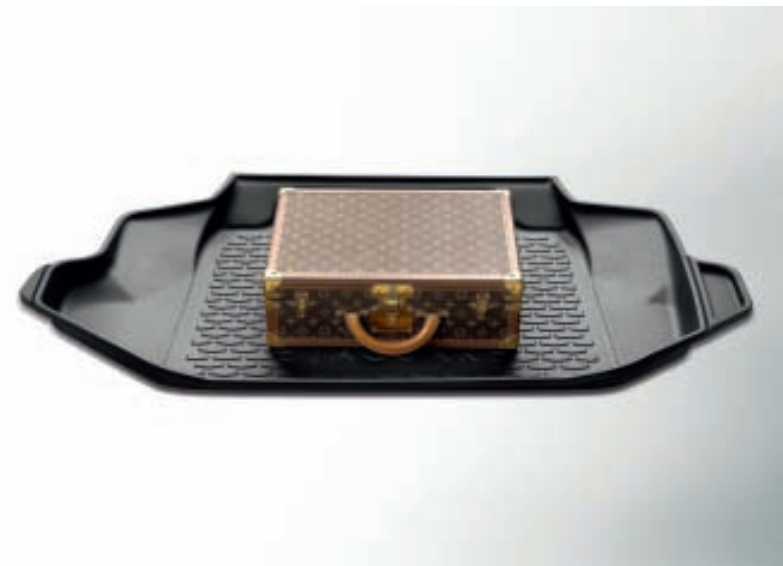
LUGGAGE COMPARTMENT FINISHER

This Jaguar branded finisher enhances the XK boot area. The finisher is made from stainless steel, has a brushed finish with bright highlights and adds aesthetic appeal as well as scuff protection.
C2P18180



LUGGAGE COMPARTMENT PREMIUM CARPET MAT

Luxurious soft luggage mat in Jet black with the Jaguar logo. Deep premium 2000g/m² pile with nubuck edging and dove contrast stitch.
C2Z17858



LUGGAGE COMPARTMENT LINER

This premium liner, tailored specifically for the XK luggage compartment, will protect the load space area of the boot. Light and durable, it is easily removable for cleaning.
C2P2457

GLOSSARY

POWERTRAIN AND DRIVING DYNAMICS

JAGUAR SEQUENTIAL SHIFT™

Provides the choice of Drive, Sport Automatic or Manual gearshift modes, with one touch paddles mounted behind the steering wheel to control gear changes manually.

ADAPTIVE DYNAMICS

Designed to provide the optimum balance between low speed ride comfort and high speed handling precision, analysing body movement, steering and road wheel inputs up to 500 times a second and continuously adjusting the suspension settings through electronically controlled dampers.

ACTIVE DIFFERENTIAL

An electronically controlled, active differential with Handling Functionality that limits the slip between the rear wheels to improve traction and stability in different driving conditions, working in harmony with the Traction, ABS and DSC systems.

DYNAMIC STABILITY CONTROL (WITH TRAC DSC MODE)

Intervenes in demanding driving situations by applying braking to individual wheels and reducing engine torque.

JAGUAR DRIVE CONTROL™

Interacts with the DSC (Dynamic Stability Control) engine and transmission management systems to change the characteristics of engine mapping, transmission shifts and brake interventions. It offers different modes selectable by a button and is designed to optimise the vehicle response depending on driving conditions and style.

WINTER MODE

Softens the responsiveness of the engine and modifies the gear change strategy to improve traction in icy or slippery conditions. The vehicle performs in a more gentle and controlled manner, allowing more confident progress. When active, Winter Mode selects 2nd gear for pulling away on level ground (no incline).

DYNAMIC MODE

Designed to optimise vehicle systems to deliver a more involving driving experience. When Dynamic Mode is selected, Trac DSC is automatically engaged, and engine torque delivery characteristics and gear shift points are modified to further improve responsiveness. When selected while the transmission is in full Manual mode, transmission up-shifts are fully controlled by the driver, with no automatic up-shift when the rev limit is reached.

EXTERIOR FEATURES

ADAPTIVE FRONT LIGHTING WITH DYNAMIC PIVOTING HEADLAMPS

Sensors react to the car's speed and steering input, and the system can deflect the headlight beams by up to 15 degrees casting light deeper into corners, and giving added confidence at night.

XKR SPEED PACK

Maximum speed increase from 155mph to 174mph, body coloured side sill extensions and rear diffuser. 20" Kasuga alloy wheels with painted finish.

XKR BLACK SPEED PACK

Maximum speed increase from 155mph to 174mph, 20" Kalimnos alloy wheels with gloss black finish, body coloured side sill extensions and rear diffuser. Gloss black finish to upper and lower mesh grilles, side intakes, side power vents, boot lid finisher and window surrounds (Convertible chrome window surrounds).

XKR DYNAMIC PACK

Maximum speed increase from 155mph to 174mph, 20" Vulcan alloy wheels, forged and lightweight in polished finish; Red brake calipers. 10mm reduction in ride height, forged and fully machined front knuckle with unique spring and damper settings and uprated Adaptive Dynamics. Body coloured side sill extensions and rear diffuser.

XKR BLACK DYNAMIC PACK

Maximum speed increase from 155mph to 174mph, 20" Vulcan alloy wheels, forged and lightweight in gloss black finish; Red brake calipers. 10mm reduction in ride height, forged and fully machined front knuckle with unique spring and damper settings and uprated Adaptive Dynamics. Body coloured side sill extensions, and rear diffuser. Gloss black finish to upper and lower mesh grilles, side intakes, side power vents, boot lid finisher and window surrounds.

INTERIOR FEATURES

AUTOMATIC AIR-RECIRCULATION WITH 5 SETTINGS

Automatic cabin recirculation triggered by external odour sensor with 5 sensitivity settings.

JAGUAR SMART KEY SYSTEM™ WITH KEYLESS ENTRY

With the Jaguar Smart Key in your pocket or bag, the car automatically unlocks as you pull the door handle. Simply push the ignition button to start the engine. Upon leaving, simply press a button on the door handle to lock the car or use the Jaguar Smart Key.

VALET MODE

When Valet mode is enabled, the vehicle can be parked by a parking attendant who can lock the vehicle, but cannot open the luggage or glove compartments. Valet mode can be enabled and disabled through a secure function in the Touch-screen.

SAFETY AND SECURITY

ROLL-OVER PROTECTION SYSTEM

Two automatically deployable hoops which are designed to activate in a roll-over event (Convertible only).

MULTIMEDIA

NAVIGATION SYSTEM⁽¹⁾⁽²⁾

7 inch Touch-screen display with DVD mapping, postcode entry, destination entry on the move and TMC (Traffic Messaging Channel).

JAGUAR 125W SOUND SYSTEM

With AM/FM radio featuring EON, RDS, PTY, TA and single disk CD with automatic volume control, 100W power amplifier, WMA, MP3 compatibility, and 6 speakers.

JAGUAR 525W PREMIUM SOUND SYSTEM

As Jaguar sound system with 120W per channel (525W total power output) low-distortion Dolby® Pro Logic® II Surround Sound, 3 channel stereo, power amplifier and 8 speakers.

BOWERS & WILKINS 525W SURROUND SOUND SYSTEM

Featuring a unique multichannel amplifier with Dolby® Pro Logic® II Surround Sound, 3 channel Stereo, and specially-designed Bowers & Wilkins loudspeaker components, including high-output, low-distortion Kevlar® speakers and extended high-frequency aluminium dome tweeters.

WINDOWS MEDIA AUDIO (WMA) AND MP3 COMPATIBILITY

Enables the CD player to play CDs which contain WMA and MP3 files.

TRAFFIC MESSAGE CHANNEL (TMC)

A specific application of the FM Radio Data System (RDS) used for broadcasting real-time traffic and weather information. Data messages are received silently and decoded by a TMC-equipped car radio or navigation system, and delivered to the driver in a variety of ways. The most common of these is a TMC-enabled navigation system that can offer dynamic route guidance, alerting the driver of a problem on the planned route and calculating an alternative route to avoid the incident.

INTERIOR THEMES

XK INTERIOR THEME

Sport seats with Bond grain leather facings, 10/10 way driver's and passenger's electric adjustment including fore/aft, recline, height, 2-way lumbar support and memory function. Variable heated. Cloth headlining. Carpet mats.

XK PORTFOLIO INTERIOR THEME

Luxury seats in soft grain leather with contrast stitch, 16/16 way driver's and passenger's electric adjustment, variable manual headrest, includes 4-way power lumbar, driver and passenger memory, front cushion length adjust, variable bolster and perforated (front and rear). Variable heated and cooled. Soft grain contrast stitch leather to steering wheel, doors, rear side panels, instrument panel and centre console with twin stitch detail. (No contrast stitch to Ivory seats). Canvas Suedecloth premium headlining. Nubuck edged premium carpet mat set with Jaguar script and logo. Heated leather steering wheel. Bowers & Wilkins 525W surround sound system.

XKR INTERIOR THEME

Luxury seats in soft grain leather with contrast stitch, 16/16 way driver's and passenger's electric adjustment, variable manual headrest with R logo, includes 4-way power lumbar, driver and passenger memory, front cushion length adjust, variable bolster and perforated (front and rear). Variable heated and cooled. Soft grain contrast stitch leather to steering wheel, doors, rear side panels, instrument panel and centre console with twin stitch detail. (No contrast stitch to Ivory seats). Jet Suedecloth premium headlining. Nubuck edged premium carpet mat set with Jaguar script and logo. Heated leather steering wheel. Bowers & Wilkins 525W surround sound system.

XKR-S INTERIOR THEME

Performance seats in carbon and soft grain leather with contrast micro-piping and stitch, 16/16 way driver's and passenger's electric adjustment, variable manual headrest with R-S logo, includes 4-way power lumbar, driver and passenger memory, front cushion length adjust, variable bolster. Variable heated. Carbon and soft grain leather to door inserts and rear side panels. Soft grain contrast stitch leather to steering wheel, doors, rear side panels, instrument panel and centre console with twin stitch detail. Poltrona Frau® Jet leather headlining. Nubuck edged premium carpet mat set with Jaguar script and logo. Heated leather steering wheel. Bowers & Wilkins 525W surround sound system.

WHEEL SPECIFICATIONS	FRONT	TYRES	REAR	TYRES
Venus alloy wheels	8.5J x 18"	245/45 R18	9.5J x 18"	275/40 R18
Caravela alloy wheels	8.5J x 19"	245/40 R19	9.5J x 19"	275/35 R19
Artura alloy wheels	8.5J x 19"	245/40 R19	9.5J x 19"	275/35 R19
Tamana alloy wheels	8.5J x 20"	245/40 R19	9.5J x 19"	275/35 R19
Kalimnos alloy wheels	8.5J x 20"	255/35 R20	9.5J x 20"	285/30 R20
Nevis alloy wheels	8.5J x 20"	255/35 R20	9.5J x 20"	285/30 R20
Selena alloy wheels	8.5J x 20"	255/35 R20	9.5J x 20"	285/30 R20
Takoba alloy wheels	8.5J x 20"	255/35 R20	9.5J x 20"	285/30 R20
Kasuga alloy wheels	9.0J x 20"	255/35 R20	10.0J x 20"	285/30 R20
Venom alloy wheels	9.0J x 20"	255/35 R20	10.0J x 20"	285/30 R20
Vulcan alloy wheels	9.0J x 20"	255/35 R20	10.5J x 20"	295/30 R20

⁽¹⁾ Different DVDs exist in different regions. Please consult your local Jaguar dealer for details of which countries are covered by the DVD supplied with your vehicle.

⁽²⁾ The navigation system must always be used in conditions that will not affect the driver's ability to drive safely or affect the safety of other road users.

XK OWNERSHIP EXPERIENCE

SERVICE, ASSURANCE, AND PEACE OF MIND ARE ALL PART OF THE PRIDE OF OWNING YOUR XK.

THE JAGUAR ACCESSORY RANGE

Enabling you to personalise your car, to create a driving experience that is even more individually rewarding. All Jaguar accessories are tested rigorously for safety and durability in the most arduous of climates and conditions. A comprehensive range of styling options, interior and exterior accessories, enabling you to tailor your XK to suit your personal style. The full range of Jaguar accessories is available to view on-line, please visit jaguar.co.uk for further information.

BECAUSE ONLY THE BEST WILL DO

An official Jaguar dealer or Approved Service Centre can ensure that Jaguar trained, specialist technicians, with access to the full range of Jaguar approved parts and tools, will always be on hand to guarantee that every fitting, or repair, is carried out exactly the way Jaguar intended. Your Jaguar dealer or Approved Service Centre can also supply and fit Jaguar approved accessories to personalise and add to the practicality and style of your XK model.

SERVICE AND ASSURANCE*

Complete peace of mind including Competitively Priced Servicing, Seasonal Health Checks and Total Tyre Care to ensure that your Jaguar XK retains its premium condition, delivering optimal performance.

WARRANTY*

3 year unlimited mileage warranty together with a 3 year unlimited mileage Paint Surface Warranty and a 6 year Corrosion (Perforation) Warranty.

JAGUAR MAGAZINE

Jaguar Magazine is the official magazine of Jaguar Cars. It features the new Jaguar XJ, XK and XF, and the worlds of luxury, style, design and travel. The fully interactive Jaguar Magazine iPad app takes the very best of the print edition of the Magazine and adds extra images, and exclusive information, allowing you to explore Jaguar's world in a whole new way.

JAGUAR.CO.UK

Jaguar's official interactive website contains the latest information on Jaguar models and pricing. It also features helpful tools such as a dealer locator and a new model configurator allowing you to see the car tailored to your specification and colour.

JAGUAR FINANCIAL SERVICES*

Whether your requirements are business or personal please contact your local Jaguar dealer to discuss a range of finance and insurance products that can be tailored to meet your needs.

*Terms and conditions apply. Please contact your local Jaguar dealer for more information





JAGUAR



BY APPOINTMENT TO
HER MAJESTY THE QUEEN
MANUFACTURERS OF
CARS AND JAGUAR CARS
JAGUAR CARS LIMITED COVENTRY

BY APPOINTMENT TO HER ROYAL
HIGHNESS THE PRINCE OF WALES
MANUFACTURERS OF
CARS AND JAGUAR CARS
JAGUAR CARS LIMITED COVENTRY

PREVIOUS APPOINTMENT TO THE LATE QUEEN ELIZABETH THE QUEEN MOTHER 1984-2001

IMPORTANT NOTICE

Jaguar Cars Limited is constantly seeking ways to improve the specification, design and production of its vehicles and alterations take place continually. Whilst every effort is made to produce up-to-date literature, this brochure should not be regarded as an infallible guide to current specifications, nor does it constitute an offer for the sale of any particular vehicle. Distributors and dealers are not agents of Jaguar Cars Limited and have absolutely no authority to bind Jaguar Cars Limited by any express or implied undertaking or representation. Illustrations in this brochure may include optional extras. Comparisons are based on manufacturer's own data and testing.

ENVIRONMENTAL INNOVATION AT JAGUAR

Jaguar is proud to continue the company's tradition with its approach to Environmental Innovation. From the choice of lightweight materials and lean production methods to the efficiency of its engines and designs, Jaguar is committed to operating as a more sustainable business and reducing its overall environmental impact.

Jaguar's flagship XJ model was the first in the company to achieve ISO14040, the international standard for vehicle 'whole life cycle' assessment. This certification measures the environmental impact of XJ from component material sourcing and manufacturing process, through its driven life time, to final disposal. But that's not all. Every new Jaguar vehicle is designed to be 85% recyclable and reusable, in addition 95% recoverable and reusable with 10% for energy generation.

The XJ and XK's innovative use of lightweight aluminium, which incorporates up to 50% recycled material in the body structures, provides considerable performance benefits. This includes improved fuel consumption, and less CO₂ emissions as well as the dynamic performance inherent in its weight saving design.

Jaguar is committed to reducing dependency on fossil fuels, using fewer resources and creating less waste. Already the manufacturing assembly CO₂ emissions of each Jaguar built in the UK since 2009 is offset. For every tonne of CO₂ emitted in the assembly process, Jaguar invests in carbon reduction projects that reduce an equivalent tonne of CO₂ elsewhere. Offsetting allows Jaguar to take action now, to reduce its impact on the environment, as part of an integrated carbon management plan. This company plan includes targets to reduce operating CO₂ emissions and waste to landfill by 25% by 2012, water consumption by 10% by 2012 and fleet average tailpipe CO₂ emissions by 25% by 2015, based on 2007 levels.

But it doesn't stop there. World class manufacturing facilities certified to ISO 14001 since 1998, transport miles have been cut from delivery routes and new ways are being introduced to produce energy from food waste at our headquarters in the UK.

That's Environmental Innovation at Jaguar.

Bowers & Wilkins is a registered trademark of B&W Group Limited.
Dolby and Pro Logic are registered trademarks of Dolby Laboratories.
The Bluetooth® word mark and logos are owned by the Bluetooth SIG, Inc. and any use of such marks by Jaguar Cars Limited is under license.
iPod, iPod touch and iPad are trademarks of Apple Inc, registered in the US and other countries.
Kevlar® is a registered trademark of DuPont.
Poltrona Frau® is a registered trademark of Poltrona Frau Group.

Jaguar Cars Limited,
Registered Office: Abbey Road, Whitley,
Coventry, CV3 4LF, United Kingdom
Registered in England Number: 1672070
jaguar.co.uk





JAGUAR.CO.UK