

New Products



4472615
15" Plymouth Wire Wheel covers [Set of 4] 4472615
Mopar
15" Plymouth Wire Wheel covers [Set of 4] Part# 4472615 Complete Set of 4 Includes: Center Caps & Plymouth, Locks & Wrench, Valve stem extensions. Condition: New still in factory packaging. OEM Mopar Part
159.95USD



350-160
Hemi AirAid Cold Air Intake System 350-160
Aftermarket
Hemi AirAid Cold Air Intake System
<p>Description:</p> <p>AIRAIID's newest Quick Fit (QF) series intake is simple to install and well worth the effort. At the heart of the system is an AIRAID Premium Series highflow air filter that is protected from the engine by our innovative Cool Air Dam (CAD) design. Filtration is second to none with the combination of our proprietary SynthaFlow and multiple cotton gauze layers. All AIRAID Premium Filters are 100% reusable and feature a Lifetime Guarantee. Easy installation, Emissions Legal and AIRAIID's Premium SynthaFlow cleanable filter design are just a few of the great benefits of our Newest QF Series system.</p> <p>Part# 350-160</p> <p>Fits: Dodge Charger 5.7L Hemi, Chrysler 300c 5.7L Hemi, Dodge Magnum 5.7L Hemi.</p> <p>Condition: New</p> <p>06-07 Charger RT 5.7L Hemi</p> <p>05-07 Magnum RT 5.7L Hemi</p> <p>Please Note: Will not fit optional AWT performance package</p>
<del>164.95USD</del> 99.95USD



2873140
Chrysler 300c Eibach Prokit Lowering Springs 2873140
Aftermarket
Chrysler 300c Eibach Prokit Lowering Springs
<p>Chrysler 300C V8 lowering spring kit by Eibach Pro Kit. Fits 2 wheel drive models. The Eibach Pro Kit Chrysler 300C lowering spring kit is the perfect answer for most frequently driven street cars. It's the Eibach legendary spring system that dramatically improves both a vehicle's performance and appearance. The Eibach Pro Kit lowers your 300C's center of gravity, reducing squat during acceleration, body roll in corners and excessive nose dive under braking. The Eibach Pro Kit also reduces excessive fender well clearance, making your car look just as hot as it performs. The Eibach Pro Kit is designed and tested by Eibach's suspension engineers and performance driving professionals, to deliver aggressive good looks and high performance handling, without ever compromising safety or ride quality. Eibach Pro Kit springs provide the ultimate balance to take your passion for driving to a whole new level. The Eibach Pro Kit lowers your Chrysler 300C 2wd V8 1.6" front and rear. Sold as a set of 4 lowering springs.</p>
Part# 2873140
Condition: New
289.95USD 189.95USD

4726035AD
Axle half Shaft 4726035AD
Mopar
Axle half Shaft&nbsp;Part# 4726035ADCondition: NewOEM Mopar Part&nbsp;
159.95USD



82205993
2000-04 Chrysler Concord rear Spoiler - Bright Silver 82205993
Mopar
2000-04 Chrysler Concord rear Spoiler - Bright Silver &nbsp;
<p>Stylish</p> <p>Rear Spoiler enhances the vehicle's appearance. Spoiler is molded from reinforced composite materials for added strength. Designed exclusively to match the lines of the vehicle for a more sporty appearance.</p> <p>Available in silver to match body color.Part# 82205993Color: SilverRegular Price: \$ 230.00On Sale For: \$99.95</p>
<del>230.00</del> USD 99.95USD



ZJ-GTS
Skid Row Gas Skid for 97-01 XJ Cherokee and 93-98 ZJ Grand Chero
Aftermarket
Skid Row Gas Skid for 97-01 XJ Cherokee and 93-98 ZJ Grand CherokeeSkid Row now makes a Gas Tank skid plate for your XJ or ZJ! It's made with 3/16ths on the bottom and the sides and installs over the factory skid for easy installation. You're not going to hurt your tank now! It comes powder coated black and fits both the 15 gallon and 20 gallon tanks.Part# ZJ-GTS, SR-ZJ-GTSCondition: NewManufacture: Skid RowMSRP: \$240.30
<del>240.30</del> USD 199.95USD



XJ-ESP-AT
Skid Row Engine Skid Plate for XJ with AT XJ-ESP-AT
Aftermarket
<p>Skid Row Engine Skid Plate for XJ with AT We have models for the 4.0L engine with automatic or manual tranny. This skid plate fits with V6 and 4 cylinder engines as well, but the oil drain hole is designed for the 4.0L. It requires drilling only 1 hole and clears factory and most aftermarket headers. It's mounting height is also adjustable to accommodate changes in your exhaust system. It protects your oil pan, exhaust, and transmission from damage no matter what the trail throws at you.</p> <p>Mounted in three locations it provides you with the best protection you can get for your Cherokee. And you don't have to remove it to change your oil! This engine skid plate mounts to the transmission cross-member at the rear. On the passenger side it mounts using the bolt for the lower control arm. On the driver's side there is a two piece mounting hoop that goes over the driveshaft and attaches to the lower control arm bolt also. All of this makes for a very sturdy skid plate that gives you plenty of clearance for your driveshaft and exhaust.</p> <p>Please note: No lift is necessary Part# SR-XJ-ESP-14, XJ-ESP-AT Condition: New Manufacture: Skid Row</p>
225.00USD 189.95USD



XJ-TCSP
Skid Row Transfer Case Skid for XJ XJ-TCSP
Aftermarket
<p>Skid Row Transfer Case Skid for XJ We have a new transfer case skid plate for your XJ Cherokee or ZJ Grand Cherokee! It's much stronger than the factory part (if you got one! )and protects one of the most vulnerable parts of your drivetrain. It is designed to work with lowered transmission cross-members and includes a drain hole to make maintenance easier. The three mounting bolts that attach the skid to the cross-member are grade 5 carriage bolts to help prevent damage to the bolt heads and make the bottom of your Jeep just a little bit smoother. The skid plate is made from 3/16" thick steel and comes powder coated in semi-gloss black for a durable and attractive finish. Part# SR-XJ-TCSP Manufacture: Skid Row Condition: New</p>
125.00USD 69.95USD

4677165
A/C HOSE ASSEMBLY CHRYSLER VANS 4677165
Mopar
A/C HOSE ASSEMBLY CHRYSLER VANS
<p>Fits: Minivan, Town &amp; Country, Voyager</p> <p>Part# 4677165</p> <p>Years: 1996</p> <p>Engine: 3.8L, 3.3L</p> <p>Condition: New</p> <p>OEM Mopar Part</p>
25.00USD

5104817AB
Ball Joint PKG Lower 5104817AB
Mopar
Ball Joint PKG lower
<p>Part# 5104817AB</p> <p>Condition: New</p> <p>OEM Mopar Part</p>
50.00USD

---

OE Mopar Parts (18)  
OE Mopar Accessories (3)  
Mopar Performance Parts (2)  
Restoration & Canceled Parts (41)  
Collectables (2)  
GoodYear Tires (1)  
OE Audio "Radios, Cassette & CD" (14)  
OE Video "DVD & VHS" (1)  
OE Floor Mats (4)  
Aftermarket Accessories (8)  
Special Tools (1)

OE Mopar Parts



---> OE Mopar Parts

4726035AD
Axle half Shaft 4726035AD
Mopar
Axle half Shaft&nbsp;Part# 4726035ADCondition: NewOEM Mopar Part&nbsp;
159.95USD

4677165
A/C HOSE ASSEMBLY CHRYSLER VANS 4677165
Mopar
A/C HOSE ASSEMBLY CHRYSLER VANS
<p>Fits: Minivan, Town &amp; Country, Voyager</p> <p>Part# 4677165</p> <p>Years: 1996</p> <p>Engine: 3.8L, 3.3L</p> <p>Condition: New</p> <p>OEM Mopar Part</p>
25.00USD

5104817AB
Ball Joint PKG Lower 5104817AB
Mopar
Ball Joint PKG lower
<p>Part# 5104817AB</p> <p>Condition: New</p> <p>OEM Mopar Part</p>
50.00USD

52128696AC
Jeep Cherokee Vacuum Tube 52128696AC
Mopar
Jeep Cherokee Vacuum Tube
 Part# 52128696AC
25.00USD

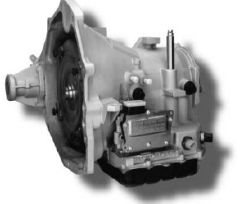
5159058AC
06-07 Cherokee/Wagoneer rear bumper cover 5159058AC
Mopar
Cherokee/Wagoneer rear bumper cover
 Fits: 2006 - 2007 Cherokee/Wagoneer Laredo Part# 5159058AC Condition: New in the box OEM Mopar Part
244.00USD

5102341AA
CHRYSLER PACIFICA Front bumper cover 5102341AA
Mopar
CHRYSLER PACIFICA upper Front bumper cover
 Fits: 04-07 Chrysler Pacifica LIMITED / TOURING MODEL Part# 5102341AA Condition: New in the box OEM Mopar Part
<del>330.00USD</del> 269.95USD



55076626AC
98-03 DODGE DURANGO REAR BUMPER STEP PAD 55076626AC
Mopar
98-03 DODGE DURANGO REAR BUMPER STEP PAD
Fits: 1998, 1999, 2000, 2001, 2002, 2003 Dodge Durango
Part# 55076626AC
Condition: New in package
OEM Mopar Part
<del>59.92USD</del> 29.95USD

5EU79VF7AB
2001 Grand Cherokee Front Bumper Cover
Mopar
2001 Grand Cherokee Front Bumper Cover
Fits: 2001 Grand Cherokee Limited, Grand Cherokee Laredo w/o fog lamps, w/o grill
Condition: New in the box
OEM Mopar Part
159.95USD

5EU81ZSPAB	
03 - 04 JEEP CHEROKEE/WAGONEER Rear bumper cover 5EU81ZSPAB	
Mopar	
<p>Rear bumper cover</p> <p>Fits:03 - 04 &amp;nbsp;&amp;nbsp;&amp;nbsp;JEEP&amp;nbsp;&amp;nbsp;&amp;nbsp;CHEROKEE/WAGONEER (FULL SIZE) &amp; &amp;nbsp;&amp;nbsp;&amp;nbsp;Grand Cherokee Laredo/Sport &amp;nbsp;&amp;nbsp;&amp;nbsp;w/o hitch bezel &amp;nbsp;&amp;nbsp;&amp;nbsp;Color: primered &amp;nbsp;&amp;nbsp;&amp;nbsp;Condition: NEW in the box &amp;nbsp;&amp;nbsp;&amp;nbsp;OEM Mopar part</p>	
230.00USD 179.95USD	
5135945AB	
Minivan Liftgate 5135945AB	
Mopar	
OEM Minivan Liftgate	
<p>Part# 5135945AB &amp;nbsp;&amp;nbsp;&amp;nbsp;Condition: New in the box &amp;nbsp;&amp;nbsp;&amp;nbsp;OEM Mopar Part Ready for paint</p>	
159.95USD	
	R4797827AB
	Minivan Transmission "A604" R4797827AB
	A604 Minivan TransmissionFits: 1995 Minivans with 3.3L engineCondition: Mopar RemanDrive: 2.49Part# R4797827ABDue to the extremely low price, this part has no warranty and cannot be shipped, If you live in the St. Louis area, Please Call
	2158.33USD 1200.00USD
R4778716AB	
Neon Transmission "A413" R4778716AB	
Mopar	
Neon Automatic TransmissionFits: Dodge Neon with 2.0L engineYears: 1996-1998Drive: 3.19Condition: Mopar RemanPart# R4778716ABDue to the extremely low cost, this item has no warranty. and cannot be shipped. If you live in the St.Louis area, Please Call.&nbsp;&nbsp;&nbsp;	
1495.00USD 1000.00USD	

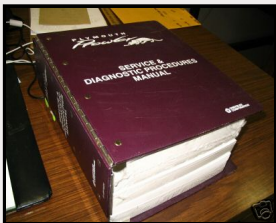
5139235AB
Engine - Short block 5139235AB
Mopar
<p>Engine - Short block Fits: charger, magnum, 300, w/o awd, 4 speed auto - 3.5L Years: 2006 - 2007 Condition: NEW! Part# 5139235AB This is a Brand New Original Equipment Part from Mopar, it is being sold at a Wholesale price Without any Warranty. No shipping on this item, if you are in the St. Louis area, Please call.</p>
2000.00USD



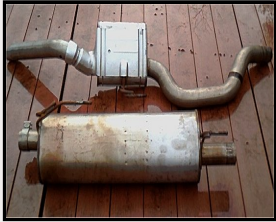
WV25PAKAA
2005 OE Aluminum Minivan rims
Mopar
<p>2005 OE Aluminum Caravan rims. These are take-off from new 2005 Caravans. They are like new! Complete set of 4 \$300.00 plus Shipping \$ taxes! part# WV25PAKAA.</p> <p>Dealer list = \$281.00 each!</p> <p>* Model: WV25PAKAA                  * Shipping Weight: 25lbs                  * 8 Units in Stock                  * Manufactured by: MOPAR</p>
<del>281.00</del> USD 75.00USD



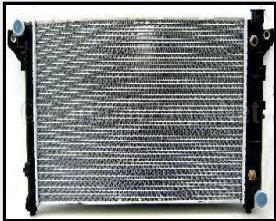
04srt4servmanuals
2004 SRT-4 Service Manual Set
Mopar
<p>2004 SRT-4 Service Manual Set</p> <p>The 5 books include: 1) Transmission Diagnostic Procedures 2) Chassis Diagnostic Procedures 3) Powertrain Diagnostic Procedures 4) Body Diagnostic Procedures 5) Service Manual "the big book" They are in Very Good Condition. ONLY 1 SET AVAILABLE!</p>
120.99USD



97prowlerman
1997 Prowler Service Manual
1 used 1997 Plymouth Prowler Service Manual
great condition
59.99USD



05hemicatback
05 HEMI truck cat back Exhaust
Mopar
"Slightly used" 05 HEMI truck cat back Exhaust system. This was a Take-Off item.
Low mileage truck had Mopar Performance exhaust installed.
* Model: 05 HEMI truck
* Shipping Weight: 60lbs
* 1 Units in Stock
* Manufactured by: MOPAR
<del>75.00USD</del> 269.95USD



52028057
Radiator - 1999 Dodge Ram 3500 (8Cyl 5.2L)
Mopar
1999 Dodge Ram 3500 (8Cyl 5.2L)
Radiator.
Part#52028057
Core Size: CH 31 5/8 X 19 3/8 X 1 1/4
Inlet: 1 1/2
Outlet: 1 3/4
OE NEW
<del>345.00USD</del> 129.99USD

OE Mopar Accessories

---> OE Mopar Accessories

82300855
1996-1998 Mopar Dodge minivan hitch receiver 82300855
Mopar
Mopar Class II Trailer HitchPart# 82300855Condition: UsedNote: Mounting hardware Not IncludedFits: 1996-1998 Minivans
50.00USD



82201650
Wheel Locks 82201650
Mopar
2007 Jeep Wrangler
One-piece wheel lock kit, set includes five chrome-plated locking nuts, one exclusive Mopar key (5th wheel lock is for exterior mounted spares), for Mopar and production alloy wheels onlyPart# 82201650Condition: NEW
<del>38.00USD</del> 29.99USD



82208246AB
Rear Park Assist System kit 82208246
Mopar
The Rear Park Assist System provides visual and audible indications of the distance between the rear fascia and the detected obstacle when backing up.factory option on 2005-up modelsPart# 82208246ABFits: 2005 & upModels: 300, 300C Concord, Intrepid, Crossfire, Durango 2004 & up, Magnum, Pacifica, PT Cruiser, Jeep Grand Cherokee.Condition: NEW
<del>299.00USD</del> 150.00USD



Mopar Performance Parts

---> Mopar Performance Parts



MPSpoiler
L Body Mopar Performance Rear Spoiler
Mopar Performance
L Body Mopar Performance Rear Spoiler Fits: 2 door L bodies - Charger/TC3 Extremely Rare! No longer produced Primered Black Fiberglass construction Good Condition
159.95USD



P5153859
2007 Mopar Performance Catalog
Mopar
The NEW Mopar Performance Catalog.
320 Pages of Performance Parts!
Part# P5153859
<del>8.00</del> USD 5.00USD

Restoration & Canceled Parts

---> Restoration & Canceled Parts



4472615
15" Plymouth Wire Wheel covers [Set of 4] 4472615
Mopar
" Plymouth Wire Wheel covers [Set of 4]Part# 4472615Complete Set of 4Includes: Center Caps &"Plymouth", Locks & Wrench, Valve stem extensions.Condition: New still in factory packaging.OEM Mopar Part
159.95USD



82205993
2000-04 Chrysler Concord rear Spoiler - Bright Silver 82205993
Mopar
2000-04 Chrysler Concord rear Spoiler - Bright Silver  &nbsp;
Stylish  Rear Spoiler enhances the vehicle's appearance. Spoiler is molded from reinforced composite materials for added strength. Designed exclusively to match the lines of the vehicle for a more sporty appearance. Available in silver to match body color.Part# 82205993Color: SilverRegular Price: \$ 230.00On Sale For: \$99.95
<del>230.00</del> USD 99.95USD

YM13ABVAA
04/05 Dodge Durango lower front bumper cover YM13ABVAA
Mopar
Dodge Durango lower front bumper cover     Fits: 2004,- 2005 Dodge Durango Part# YM13ABVAA Condition: New in box OEM Mopar Part
<del>264.00</del> USD 195.99USD



1688966
Headlight Switch 1688966
Mopar
NEW 2 POSITION&nbsp;HEADLIGHT SWITCH
Part# 1688966 Old Part# 1571283 Condition: NEW! Fits: 55 -56 Plymouth 6 or 8 Cylinder
89.95USD



4026259
Needle Valve 4026259
Mopar
Needle ValvePart# 4026259Years: +/- 1975
5.99USD



1881938
Headlamp Dimmer foot Switch 1881938
Mopar
Headlamp Dimmer foot SwitchPart# 1881938Fits Years 1959-1979Includes Models Challenger & Cuda&nbsp;;
0.00USD



4145210
Distributor Plate Assembly 4145210
Mopar
Distributor Plate AssemblyPart# 4145210&nbsp;;
0.00USD



4288256
Throttle Kicker 4288256
Mopar
Throttle KickerFits: 1988-91 3.9L, 5.2L, 5.9L B,D Series DakotaPart# 4288256
0.00USD



4221212
Relay 4221212
Mopar
RelayApplication: 1982 2.6LPart# 4221212
24.99USD



4019314
Steering Contact Cam 4019314
Mopar
Steering Cam AssemblyPart# 4019314&nbsp;
0.00USD



4106093
Starter Clutch Assembly 4106093
Mopar
Starter Clutch AssemblyPart# 4106093
0.00USD



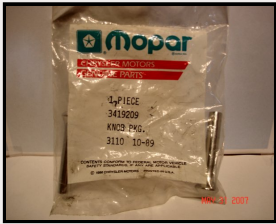
4111414
Relay 4111414
Mopar
RelayPart# 4111414
0.00USD



2589587
Ash Receiver 5289587
Mopar
Ash ReceiverPart# 2589587Fits: most 70-74 E bodiesCondition: Used&nbsp;
59.95USD



3879841
Diaphragm Assembly 3879841
Mopar
Diaphragm AssemblyPart# 3879841
0.00USD



3419209
Chrome Lock Knobs 3419209
Chrome Lock KnobsPart# 3419209Package of 2NEW OE!
0.00USD



2881600
Wheel Cylinder 2881600
Mopar
Wheel CylinderPart# 2881600
0.00USD



2947486
Ignition Switch 2947486
Mopar
Ignition SwitchFits: 1970 - 1974 Dodge Challenger and Plymouth Barracuda.1970 through 1974 E Body WITHOUT TILT STEERING.1970 through 1976 Chrysler Products Passenger cars : A Body , B Body , C Body and Y Body WITHOUT TILT STEERING.1972 through 1977 Dodge Trucks WITHOUT TILT STEERING.Part# 2947486
0.00USD



K4411104
Power Antenna Cable & Mounting screws K4411104.jpg
Mopar
Power Antenna Cable & Mounting screwsPackage Part# K4411104Fits: St. Regis, Newport, Newyorker (R-Body), Mirada, CordobaEst Years: +/- 1989
0.00USD



5758687
Wiper Switch CJ 83-86 5758687
Mopar
Wiper Switch CJ 83-86 Without Intermittent WipersPart# 5758687
<del>52.50USD</del> 24.99USD



4048266
Radio Cable 4048266
Mopar
Radio Cable/ Filter?Part# 4048266
0.00USD



3679098
Turn Signal Indicator 3679098
Mopar
Right &quot;Fender Mounted&quot; Turn Signal IndicatorPart# 3679098
0.00USD



4205954
Housing Package 4205954
Mopar
Housing PackagePart# 4205954
0.00USD



2822329
Foot Switch 2822329
Mopar
Foot SwitchPrart# 2822329
0.00USD



3895960
Oil Guage 3895960
Mopar
Oil GuagePart# 3895960&nbsp;;
0.00USD



3549849
Wheel Cylinder 3549849
Mopar
Wheel CylinderPart# 3549849
0.00USD



3643989
Bushing 3643989
Mopar
BushingsPart# 3643989
0.00USD





4240062
Sensor 4240062
Mopar
Vacume SensorPart# 4240062
0.00USD



4267022
Lamp Assy 4267022
Mopar
Lamp AssyPart# 4267022
0.00USD



4094128
Piston Package 4094128
Mopar
Caliper Piston PackagePart# 4094128
0.00USD



4041733
Vacume Amplifier 4041733
Mopar
Vacume Amplifier Part# 4041733
0.00USD



3683947
Valve Package 3683947
Mopar
Heat riser Valve KitPart# 3683947
0.00USD



0CK05410
Carburetor Kit 0CK05410
Mopar
Carburetor Kit 0CK05410
0.00USD



4677334
A/C H Valve 4677334
Mopar
A/C H Valve 4677334
0.00USD



steeringwheeltrim
Steering Wheel Trim
Mopar
Steering Wheel TrimNo Part#I believe this to be part of the steering column trim on the OLD Mopars.If you have knowledge on this part, Please Contact me at info@wagnertech.net.
50.00USD



4106675
Radio/CB Cable
Mopar
Radio/CB CablePart# 4106675Fits Years +/- 1981ONLY 1 AVAILABLE! You won't find this ANYWHERE but here
39.95USD



4048417
Speaker Package 4048417
Mopar
This is a RARE find. Its is a Speaker Package of some sort. The box is UNOPENED!! do not know what it fits at this time, I will update this discription when I do find out. This is whats on the Mopar Label:Part# 4048417Package - Frnt. & RR Speaker Stereolf you have any information on this part, Please contact me at info@wagnertech.net
250.00USD



R0550067
Mopar 4 cyl Remanufactured Cylinder Head R0550067
Mopar
Mopar 4 cyl Remanufactured Cylinder Head R0550067 4 CylinderMopar RemanufacturedCanceled PartPart#: R055067Not sure what engine or years, I am searching for this information and will update this when I find it.If you have information on this item, Please e-mail me at info@wagnertech.net&nbsp;
499.95USD



82204778
Dodge Fog-Lamp Install Kit 82204778
Mopar
Fog-Lamp Install Kit.Fits: Dodge Ram (BR & BE), Dakota (AN), Durango (DN)Part#: 82204778NEW!Canceled PartKit contains all contents pictured.Fits Years: +/- 1998
150.00USD



3461410
Chrysler Hubcap 3461410
Mopar
Yet another RARE Find. NEW! Chrysler Hubcaps. Great for restoration project!OE Part# 3461410 I don't know what years or Models this went on.
125.00USD



4048371
AM FM Radio 4048371
Mopar
Old OE Mopar Radio
Working Condition!
OE Part# 4048371
Use this Radio to complete that restoration.
149.99USD



2833012
1968 Dodge Pickup Mirror
Mopar
One of a Kind RARE Part!
1968 Dodge Pickup Mirror
Excellent condition!!
Part# on the box is hand written "2833012" possible Part# ?
Price is negotiable Please call with offer.
ONLY 1 AVAILABLE!
199.00USD

Collectables

---> Collectables



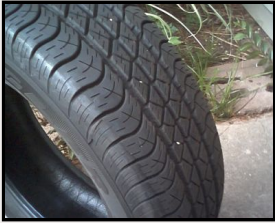
Ear Plugs
Mopar Ear Plugs
Mopar
Mopar Ear Plugs with convenient carrying case. Case has Mopar Performance Parts inprinted on front. Ear Plugs are foam style with teather for a comfortable fit. No part number, These where a promotional item. ONLY 8 AVAILABLE!
5.00USD



DASHLITE
Mopar Dashlite
Mopar
Mopar DASHLITE Rechargeable Flashlight. Plugs into Cigar Lighter. Was never sold, No part number. was a promotional item. A fully charged DASHLITE will hold a charge for up to 1 year. DASHLITE cannot over-charge, and will not drain the vehicle battery. LED. will not switch off when fully charged. *Although this product is new in the box, due to its age and limited quantities, There will be no Warranty/Guarentee that the product functions. and therefore is being sold "AS IS", as a Novelty/Collectors item.
7.00USD

GoodYear Tires

---> GoodYear Tires



235/65R17 GyWHP
235/65R17 Goodyear Wrangler HP
GoodYear
235/65R17 103S. Goodyear Wrangler HP. Very low wear. These are take-offs and are like new!
<ul style="list-style-type: none"> <li>* Model: 235/65R17</li> <li>* Tread Depth = 11/32 or 9mm</li> <li>* Shipping Weight: 35lbs</li> <li>* 4 Units in Stock</li> <li>* Manufactured by: GOODYEAR</li> </ul>
49.99USD

OE Audio "Radios, Cassette & CD"



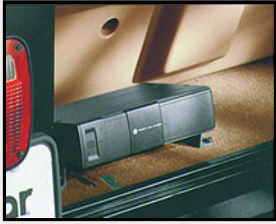
---> OE Audio "Radios, Cassette & CD"



P56038518AJ
AM/FM Cassette with CD controls RBB P56038518AJ
Mopar
AM-FM Cassette player with CD changer controls. Fits Caravan 2001-2002 Concorde 1998-2002 Dakota 2001-2002 Durango 2001-2002 Grand Cherokee 1999-2001 Intrepid 1998-2002 Neon 2000-2002 PT Cruiser 2001-2002 Sebring 2001-2002 Convertible & Sedan Stratus 2001-2002 Sedan only Town & Country 2001-2002 (Town Country) Voyager 2001-2002 300M 1999-2001 Without Infinity System on 2002 models, some connectors were changed, check for RBB on radio to verify compatibility. Part#: P56038518AJ Condition: Reman.. Like New!
<del>495.00</del> USD 159.95USD



56038933AB
RAS AM/FM Cassette Player 56038933AB
Mopar
RAS AM/FM Stereo with Cassette Player Provides 40 watts of total power at 3% total harmonic distortion. 10 AM/ 10 FM station presets. Separate bass and treble controls. Soft-touch electronic cassette with auto reverse, fast forward and rewind, and Dolby Noise Reduction. Used Great Condition Pre-Tested Part# 56038933AB
<del>308.48</del> USD 29.95USD



82207483
JEEP WRANGLER 6 Disc CD CHANGER, 82207483
Mopar
<p>Chrysler 6 Disc CD Changer for use with radios w/CD Changer ControlsMounts conveniently in rear cargo area or under rear seat for added security. Six-Disc CD Changer provides hours of listening pleasure and is specifically designed for your Wrangler. Premium electronics ensure the highest quality sound. A viscous antivibration system prevents skipping.</p> <p>Years: 2003-2005 Part#: 82207483 MSRP: \$355.00For 2001-2004 Chrysler Sebring Coupe; 2001-2004 Dodge Dakota, Durango, Ram, Stratus Coupe; 2001-2004 Jeep Wrangler</p> <p>Works with oval shaped radio with changer controls located on radio</p> <p>Direct disc select</p> <p>Bi-directional seek</p> <p>Fast Forward / Reverse</p> <p>Magazine holds 6 discs</p> <p>Viscous anti-vibration system prevents skipping</p> <p>Remote mount</p> <p>Bi-directional seek</p> <p>Horizontal to vertical mounting</p> <p>1-bit D/A converter</p> <p>8X disc over-sampling</p> <p>Requires Installation Kit 82205307 for passenger vehicles, or 82207482 for trucks and Jeep Wrangler NOTE: installation kit 82207482 required.</p> <p>can be purchased for about \$35.00+. &amp;quot;Installation Kit for Six-Disc CD Changer (mounting brackets and wiring cable), for rear cargo or underseat-mount location. Use with 82207483 above. 82207482 &amp;quot; THIS IS NOT INCLUDED!</p> <p>*</p>
355.00USD 129.95USD



82208767AB
Cargo Bins, Third Row - Dark Khaki 82208767AB
Mopar
Description: The Stow 'n Go seating provides several feet of extra storage space. The Third Row Cargo Bin allows you to conveniently store items out of sight. This hard plastic Cargo Bin fills the third row seating bin. The bin is light-weight, removable, washable and includes two interior nets to create compartments. The lid fits securely on top of the bin. The vinyl-covered lid converts into a handy table.
Color: Dark Khaki
Notes: Vinyl covered lid/table.
Item is NEW
Condition: Vinyl is coming loose along the edges.
<del>249.00USD</del> 129.95USD



4704380AC/AD/AF
AM/FM Cassette w/EQ (RBS) 4704380AC,AD,AF
Mopar
AM/FM Cassette w/EQ (RBS) Part#: 4704380AC4704380AD4704380AF FITS: Sebring Convertible 1996 -2000Model: 4704380AC, 4704380AD, 4704380AF5 Units in StockGood Condition
<del>425.00USD</del> 25.00USD



MR587285
AM/FM Cassette CD w/EQ
Mopar
AM/FM Cassette CD w 3 Band/EQMitsubishi Electric  Fits: 03-05 Sebring/Stratus CoupeModel: MR5872851 Units in StockManufactured by: MOPARGreat Condition
<del>675.00USD</del> 199.95USD



4704302
AM/FM Cassette CD (RBS) 4704302
Mopar
AM/FM Cassette Part#: 4704302CD controls Condition: used Used FITS: 1996-2000Model: 4704302Shipping Weight: 5lbs1 Units in StockManufactured by: MOPAR
<del>325.00USD</del> 29.95USD



4858540AH
AM/FM Cassette CD (RAZ) 4858540AH
Mopar
AM/FM Cassette CD w/EQ (RAZ) Part#: 4858540AH Three-band Graphic EqualizerNo CD changer control
62 watts of total power @ 3% THD 10 AM/10 FM station presets Seek-and-scan Balance/fader speaker control Soft-touch cassette controls Cassette auto reverse, fast forward/rewind Dolby B® Noise Reduction on tape Music search CD player has optical sensing mechanism instead of mechanical to draw CD in CD playback features - track access (skip), fast forward/reverse, random play
FITS: 98-01 Concorde w/o Infinity 02 Concorde 2-7 Pin connectors w/o Infinity 01-02 Durango 2-7 Pin connectors 98-02 Intrepid 2-7 Pin connectors 01-02 Dakota 2-7 Pin connectors 99-00 Grand Cherokee 2-7 Pin connectors 01-02 PT Cruiser 2-7 Pin connectors 00-02 Neon 2-7 Pin connectors 99-01 300M 2-7 Pin connectors
Model: 4858540AHCondition: NEW! Shipping Weight: 5lbs1 Units in StockManufactured by: MOPAR
<del>585.60USD</del> 259.95USD



4858584AH
AM/FM Cassette (RBN) 4858584AH
Mopar
AM/FM Cassette (RBN) Part#: 4858584AH Condition: reman Model Years: 1999-2000 Features: Three-band Graphic Equalizer CD Changer Controls * 66 watts of total power @ 3% THD * 10 AM/10 FM station presets * Seek-and-scan * Soft-touch controls * Cassette auto reverse * Dolby B, A® Noise Reduction on tape * Fast forward/rewind * Music searchModel: 4858584AHShipping Weight: 5lbs1 Units in StockManufactured by: MOPAR
<del>550.00USD</del> 149.95USD



5064171AF
AM,FM,CD PLAYER 5064171AF
Mopar
AM,FM,CD PLAYER (REF) Condition: reman Fits: 2006 Models. 300, Jeeps +++  <ul style="list-style-type: none"> <li>* Model: 5064171AF</li> <li>* Shipping Weight: 5lbs</li> <li>* 1 Units in Stock</li> <li>* Manufactured by: MOPAR</li> </ul>
<del>550.00USD</del> 259.99USD



5091506AE
AM-FM Cassette Radio 5091506AE
Mopar
AM-FM Cassette Radio 5091506AE NEW Take-Out Radio.  <ul style="list-style-type: none"> <li>Model: 5091506AE</li> <li>Shipping Weight: 5lbs</li> <li>1 Units in Stock</li> <li>Manufactured by: MOPAR</li> </ul>
All Radios are guaranteed to work or a replacement/refund will be issued upon return.
<del>375.00USD</del> 199.95USD



4858583AF
AM FM Cassette Stereo 4858583AF
Mopar
* AM FM Cassette Stereo <ul style="list-style-type: none"> <li>* 2 band EQ</li> <li>* Part# 4858583AF</li> <li>* fits 98-00 vehicles</li> <li>* MSRP 315.00</li> <li>* Shipping Weight: 5lbs</li> <li>* Manufactured by: MOPAR</li> <li>* Used: good condition</li> </ul>
All Radios are Guaranteed to work or a replacement/refund will be issued.
<del>345.00USD</del> 29.99USD



5064335AH
AM FM Cassette Stereo 5064335AH
Mopar
AM FM Cassette Stereo w/CD controls
<ul style="list-style-type: none"> <li>* 2 band EQ</li> <li>* Shipping Weight: 10lbs</li> <li>* 3 Units in Stock</li> <li>* Manufactured by: MOPAR</li> <li>* Part# 5064335AH</li> <li>* RBB</li> <li>* Fits 03-05 Vehicles</li> <li>* MSRP 350.00</li> <li>* Used: Great Condition</li> </ul>
<del>350.00</del> USD 29.99USD



56038931AB
AM FM Cassette Stereo 56038931AB
Mopar
AM FM Cassette Stereo
<ul style="list-style-type: none"> <li>* Part# 56038931AB</li> <li>* 2 band EQ</li> <li>* Fits most 98-03 Vehicles</li> <li>* MSRP 315.00</li> </ul>
Condition: Great
All Radio's are guaranteed to work or a refund/replacement will be issued.
<del>345.00</del> USD 29.99USD

OE Video "DVD & VHS"

---> OE Video "DVD & VHS"



82208810
Rear Seat Video (DVD) player 82208810
Mopar
DVD Rear Seat Video™ overhead entertainment system DVD Rear Seat Video features a 7-inch active matrix LCD display providing superior picture quality. The CD/DVD player is integrated into dash. Audio can be accessed through the vehicle's sound system and/or through wireless headphones. An auxiliary input is provided for a video camera, CD, MP3 and video games. A six-disc CD/DVD player, remote control and two sets of wireless headphones are included. Additional headphones can be purchased separately. Part#: 82208810 MSRP: 1,395.00 Car Type: Chrysler Models/Years: Town & Country 2004-2006 * For Minivans with Rail System and without Six-disc DVD player (RDV).
<del>1395.00</del> USD 849.95USD



OE Floor Mats

---> OE Floor Mats



82400584
Floor Mat set 82400584
Mopar
Floor Mat SetFront & RearCarpetColor: BrownNew!
39.95USD



82208388
Dodge Caravan Rear Dark Khaki Carpet Floor mats 82208388
Mopar
Dodge Caravan Rear Carpet Floor MatsFits: 2004-2007 Caravan w/o Stow n Go.Color: Dark KhakiPart# 82208388Our Price: \$19.95Item is New
19.95USD



82208383
Caravan Middle Floor Mat 82208383
Mopar
Middle Floor MatPart# 82208383Color: Dark KhakiFits: Caravan WithOut Stow N' GoYears: 2001-2005
39.95USD



82205014
Rear Floor Mats (Agate) 82205014
Mopar
Rear Carpet Floor MatsPart# 82205014Fits: 1999-2000Models: Concord, Intrepid, LHS, 300MColor: Agate
19.95USD

Aftermarket Accessories

---> Aftermarket Accessories



350-160
Hemi AirAid Cold Air Intake System 350-160
Aftermarket
Hemi AirAid Cold Air Intake System
<p>Description:</p> <p>AIRAIID's newest Quick Fit (QF) series intake is simple to install and well worth the effort. At the heart of the system is an AIRAID Premium Series highflow air filter that is protected from the engine by our innovative Cool Air Dam (CAD) design. Filtration is second to none with the combination of our proprietary SynthaFlow and multiple cotton gauze layers. All AIRAID Premium Filters are 100% reusable and feature a Lifetime Guarantee. Easy installation, Emissions Legal and AIRAIID's Premium SynthaFlow cleanable filter design are just a few of the great benefits of our Newest QF Series system.</p> <p>Part# 350-160</p> <p>Fits: Dodge Charger 5.7L Hemi, Chrysler 300c 5.7L Hemi, Dodge Magnum 5.7L Hemi.</p> <p>Condition: New</p> <p>06-07 Charger RT 5.7L Hemi</p> <p>05-07 Magnum RT 5.7L Hemi</p> <p>Please Note: Will not fit optional AWT performance package</p>
164.95USD 99.95USD



2873140
Chrysler 300c Eibach Prokit Lowering Springs 2873140
Aftermarket
Chrysler 300c Eibach Prokit Lowering Springs
<p>Chrysler 300C V8 lowering spring kit by Eibach Pro Kit. Fits 2 wheel drive models. The Eibach Pro Kit Chrysler 300C lowering spring kit is the perfect answer for most frequently driven street cars. It's the Eibach legendary spring system that dramatically improves both a vehicle's performance and appearance. The Eibach Pro Kit lowers your 300C's center of gravity, reducing squat during acceleration, body roll in corners and excessive nose dive under braking. The Eibach Pro Kit also reduces excessive fender well clearance, making your car look just as hot as it performs. The Eibach Pro Kit is designed and tested by Eibach's suspension engineers and performance driving professionals, to deliver aggressive good looks and high performance handling, without ever compromising safety or ride quality. Eibach Pro Kit springs provide the ultimate balance to take your passion for driving to a whole new level. The Eibach Pro Kit lowers your Chrysler 300C 2wd V8 1.6" front and rear. Sold as a set of 4 lowering springs.</p>
<p>Part# 2873140 Condition: New</p>
<p><del>289.95USD</del> 189.95USD</p>



ZJ-GTS
Skid Row Gas Skid for 97-01 XJ Cherokee and 93-98 ZJ Grand Chero
Aftermarket
<p>Skid Row Gas Skid for 97-01 XJ Cherokee and 93-98 ZJ Grand CherokeeSkid Row now makes a Gas Tank skid plate for your XJ or ZJ! It's made with 3/16ths on the bottom and the sides and installs over the factory skid for easy installation.</p> <p>You're not going to hurt your tank now!</p> <p>It comes powder coated black and fits both the 15 gallon and 20 gallon tanks.</p>
<p>Part# ZJ-GTS, SR-ZJ-GTSC Condition: New Manufacture: Skid Row MSRP: \$240.30</p>
<p><del>240.30USD</del> 199.95USD</p>



XJ-ESP-AT
Skid Row Engine Skid Plate for XJ with AT XJ-ESP-AT
Aftermarket
<p>Skid Row Engine Skid Plate for XJ with AT We have models for the 4.0L engine with automatic or manual tranny. This skid plate fits with V6 and 4 cylinder engines as well, but the oil drain hole is designed for the 4.0L. It requires drilling only 1 hole and clears factory and most aftermarket headers. It's mounting height is also adjustable to accommodate changes in your exhaust system. It protects your oil pan, exhaust, and transmission from damage no matter what the trail throws at you.</p> <p>Mounted in three locations it provides you with the best protection you can get for your Cherokee. And you don't have to remove it to change your oil! This engine skid plate mounts to the transmission cross-member at the rear. On the passenger side it mounts using the bolt for the lower control arm. On the driver's side there is a two piece mounting hoop that goes over the driveshaft and attaches to the lower control arm bolt also. All of this makes for a very sturdy skid plate that gives you plenty of clearance for your driveshaft and exhaust.</p> <p>Please note: No lift is necessary Part# SR-XJ-ESP-14, XJ-ESP-AT Condition: New Manufacture: Skid Row</p>
225.00USD 189.95USD



XJ-TCSP
Skid Row Transfer Case Skid for XJ XJ-TCSP
Aftermarket
<p>Skid Row Transfer Case Skid for XJ We have a new transfer case skid plate for your XJ Cherokee or ZJ Grand Cherokee! It's much stronger than the factory part (if you got one! )and protects one of the most vulnerable parts of your drivetrain. It is designed to work with lowered transmission cross-members and includes a drain hole to make maintenance easier. The three mounting bolts that attach the skid to the cross-member are grade 5 carriage bolts to help prevent damage to the bolt heads and make the bottom of your Jeep just a little bit smoother. The skid plate is made from 3/16" thick steel and comes powder coated in semi-gloss black for a durable and attractive finish. Part# SR-XJ-TCSP Manufacture: Skid Row Condition: New</p>
125.00USD 69.95USD



39101-86Z10-000
SUZUKI AM/FM/CASSETTE/CD Radio 39101-86Z10-000
Aftermarket
SUZUKI AM/FM/CASSETTE/CD RadioPart# 39101-86Z10-000
Condition: Reman - Like NEWIncludes Security CardPlease check with Suzuki Dealer for instalation.1
459.99USD



1099-0104-05CB
E&G Classics Chrysler 300/300C Stainless Steel Mesh Grille w/Cen
Aftermarket
E&G Classics has been known for more than 35 years as the leading manufacturer of high quality automotive restyling accessories and grilles. They have now focused their engineering expertise on the new Chrysler 300 and the results are outstanding. E&G Grilles are precision laser cut in-house so that they can control quality every step of the way. Bottom line is you won't find a more affordable nor better quality grille anywhere.Part# 1099-0104-05CBCondition: NEW!
<del>359.00USD</del> 269.00USD



1099-0104-05
E&G Classics Chrysler 300/300C Stainless Steel Heavy Metal Mesh
Aftermarket
E&G Classics has been known for more than 35 years as the leading manufacturer of high quality automotive restyling accessories and grilles. They have now focused their engineering expertise on the new Chrysler 300 and the results are outstanding. E&G Grilles are precision laser cut in-house so that they can control quality every step of the way. Bottom line is you won't find a more affordable nor better quality grille anywhere.Part#: 1099-0104-05Condition: NEWChrysler 300 &quot;Wings&quot; emblem included and already installed!
<del>359.00USD</del> 250.00USD

Special Tools



---> Special Tools



SR20K
20 PC MASTER SPINDLE RETHREAD SR20K
Matco Tools
20 PC MASTER SPINDLE RETHREAD Repair threads on stub axles/spindles on most import and domestic vehicles Dies of high-tempered steel for strength Part#: SR20KMSRP Price: \$79.10 Condition: Like NEW! used once
79.10USD 59.95USD