

WATER & OIL 12V ELECTRIC CIRCULATION PUMPS



Heavy Duty Oil Scavange/Circulation Pump

When high temperature and continuous duty are required: this pump delivers! Designed from the ground up to handle the toughest automotive racing applications for transmission/differential fluid cooling (circulation) and turbocharger oil drain (scavange) applications.

Key features:

- ◆ Continuous use circulation/scavange pump.
- ◆ High temperature capable.
- ◆ Specially designed with emphasis on turbo-charger scavange applications.
- ◆ Low noise and vibration.
- ◆ Can be mounted +/- 3 feet above fluid level.
- ◆ Military specification fit and finish at an affordable price.

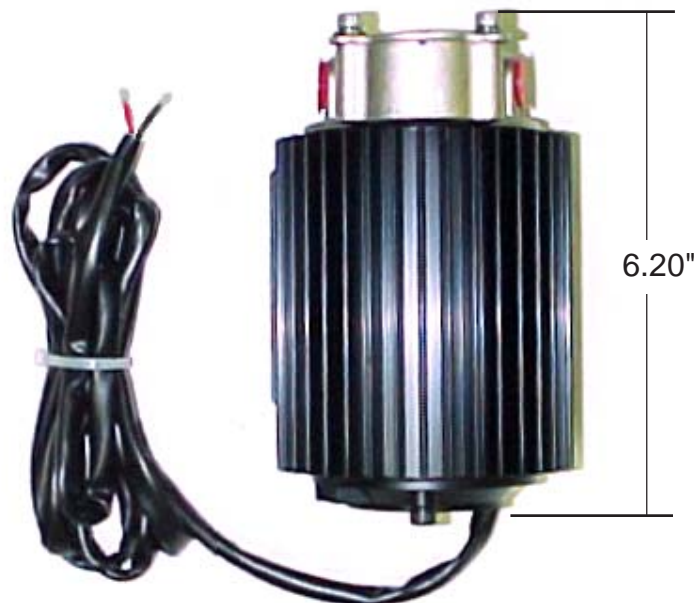
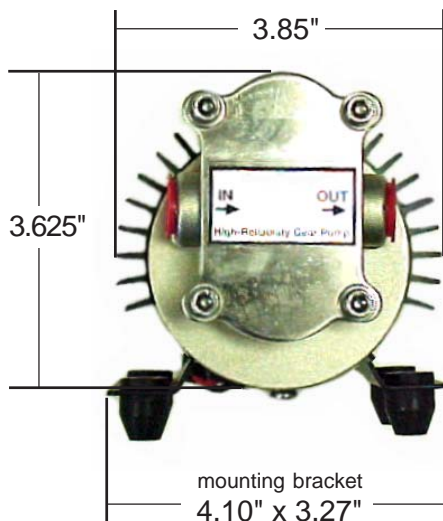
Specifications:

- ◆ 3 GPM @ 60+ psi
- ◆ 350f temp rating
- ◆ self-priming
- ◆ quiet low vibration operation
- ◆ 10,000 hour rated bearings & motor brushes
- ◆ hardened bronze pump (spur) gear rotors
- ◆ black anodized aluminum heatsink
- ◆ nickel plated pump head
- ◆ stainless pump head fasteners
- ◆ 3/8" NPT inlet/outlet
- ◆ high temperature internal wiring
- ◆ 3 foot wiring lead
- ◆ rubber-isolated mounting bracket and feet
- ◆ dimensions 6.2" x 4.1" x 4.0"
- ◆ weight 5 lbs.
- ◆ 12volt, 5 amp nominal



Heavy Duty Oil Scavange/Circulation Pump

PN# 17-530SL \$349.00

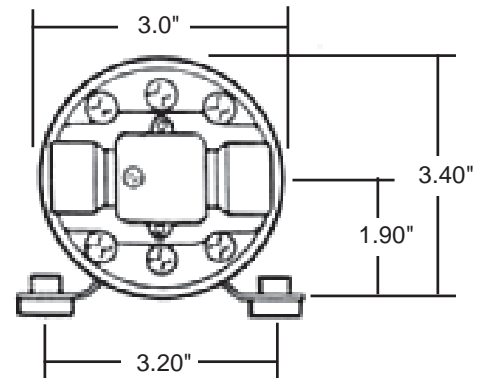
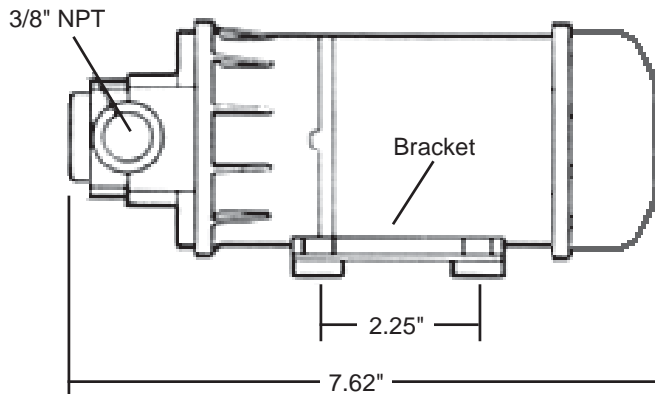


Electric Fluid Circulation Pump

12v fluid circulation pump- suitable for various applications- transmission/differential cooling, turbo oiling, water intercoolers, cool suits. Motor with ball bearing drive throughout and integral cooling fan for long life. Self priming (pump can be located above liquid level). High temperature capable up to 300 degrees (nylon pump head/housing with viton diaphragm/seals). Pump head can be indexed 90 degrees for convenient fluid connections (3/8 NPT female). *Flow Rate 1.0-2.0 GPM and up to 54 psi. working pressure. Length 7.62" , weight 3.5 lbs, current 12 volt 8 amp max.*

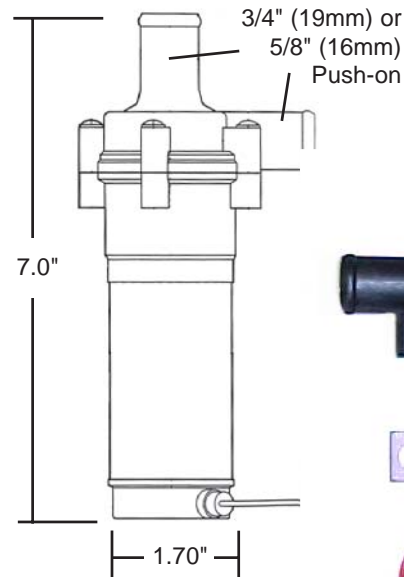


Electric Fluid Pump 17-522HT \$185.00



Water Circulation Pump- Johnson Controls

This small, high volume, 12v fluid circulation pump is very well suited for circulating water through heat exchangers on water intercooled turbo applications. Magnetic drive motor with sealed pump chamber for long life even with continuous use (up to 5000 hrs.). High temperature capable (up to 212 degrees). Pump can also be used as replacement for Bosch 392 020 024, 027, 034, 039, 064 type pumps used in a variety of functions on various European cars. Fluid connections for 3/4" i.d. (19mm) or 5/8" (16mm) hose. *Info: model CM30P7-1, flow rate is up to 7 GPM at up to 5 psi. working pressure, Length 7.0", weight 1.2 lbs, current 12 volt 2.2 amp max, bracket included.*



Water Circulation Pump (19mm) ACP3 \$147.00
Water Circulation Pump (16mm) ACP3-16 \$147.00

Back Pressure			Flow		Amp 12V
Bar	Psi	foot	l/min	GPM	
0.10	1.45	3.3	26.0	6.9	2.2
0.20	2.90	6.6	19.5	5.2	2.0
0.30	4.35	9.8	9.0	2.4	1.7

Water Circulation Pump- Johnson Controls

This large, high volume (115 or 65 liter), 12v fluid heavy duty centrifugal pump is very well suited for circulating fluid through water intercooled automotive turbocharger heat exchangers, as well as, heating and solar systems. Pump features very high flow and is available in either 38mm or 20mm fluid connections (specify when ordering). mfg# CM90P7-1

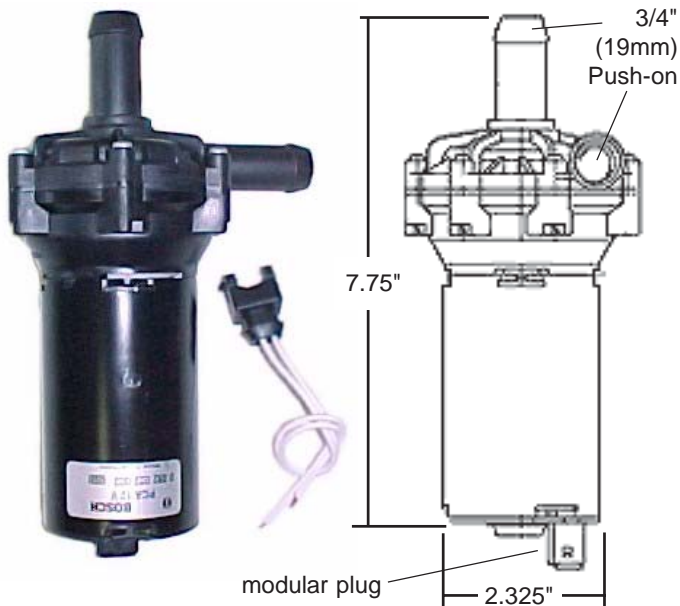
Water Circulation Pump ACP6 \$389.00

Design Features:

- Pump Body: PPA Glass Fiber Reinforced w/cooling fins
- Seal-less magnetic drive
- Impeller: PPS Thermoplastic
- Shaft: Stainless Steel
- Hose Connections: 38mm (1 1/2") or 20mm (3/4") Hose
- Liquid: Water/glycol mixture; max. 60% glycol
- Liquid temperature: -30°C – +100°C (-22°F – 212°F)
- System pressure: -0.3 to +3.0 bar; stationary max. 4.0 bar
- Dry running: 30 minutes
- Motor: 12 enclosed permanent magnet, ball bearing, continuous duty. 5000 hour motor life at normal voltage 10,000 start/stops.
- Motor, voltage: Nominal 13.6 V DC for use between 10-16V
- Dimensions: L 244mm (9.6") x W 120mm (4.7") x H 150mm (5.9")
- Weight: 3.0 kg (6.6 pounds)
- Mounting: Separate universal bracket



	Back Pressure			Flow		Amp 13.6V
	Bar	Psi	foot	l/min	GPM	
38mm	0.10	1.45	3.4	115	30.4	10
	0.25	3.62	8.4	85	22.5	9.5
	0.40	5.8	13.4	40	10.6	9
20mm	0.10	1.45	3.4	65	17.2	8.5
	0.25	3.62	8.4	50	13.2	8
	0.40	5.8	13.4	30	7.9	7.5



Water Circulation Pump- Bosch

This small 12v fluid circulation pump is very well suited for circulating water through heat exchangers on water intercooled turbo applications. Magnetic drive motor with sealed pump chamber for long life even with continuous use (up to 5000 hrs.). Pump is a direct replacement for Ford Lightning and a number of other O.E. turbo water circulation applications. High temperature capable (up to 212 degrees). Fluid connections for 3/4" i.d. (19mm) hose. Flow Rate 6 GPM at up to 3 psi. working pressure. Length 7 3/4", weight 2.2 lbs, current 12 volt 2.5 amp max.

Water Circulation Pump ACP2 \$149.00
Plug Connector H317W \$4.70

Back Pressure			Flow		Amp 12V
Bar	Psi	foot	l/min	GPM	
0.10	1.45	3.3	25.0	6.6	3.4
0.25	3.62	8.4	21.6	5.7	3.2
0.40	5.80	13.4	11.3	3.0	2.7



Water Circulation Pump- Johnson Controls

This mid-size, high volume (100 liter), 12v fluid heavy duty centrifugal pump is very well suited for circulating fluid through water intercooled automotive turbocharger heat exchangers, as well as, heating and solar systems. Pump features both high flow and relatively low electrical demand. mfg# C090P5-1

Water Circulation Pump ACP5 \$378.00

- Design features:
- Pump body: Thermoplastic PA66
 - Impeller: Thermoplastic PA66
 - Shaft: Stainless steel
 - Seal: Mechanical seal
 - Magnet housing: PSU
 - Motor: 12 V DC enclosed permanent magnet, ball bearing mounted for continuous operation.
 - Motor body incorporated mounting bracket.
 - Liquid temperature: -30°C – +100°C (-22°F – 212°F)
 - Designed for fresh water handling - non self priming

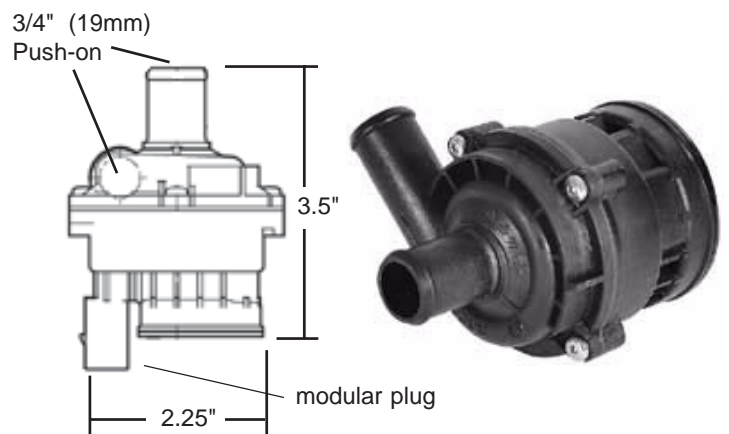
Back Pressure Bar	Back Pressure		Flow		Amp 12V
	kPa	foot	l/min	GPM	
0.10	10	3.4	100	26.4	7.4
0.25	25	8.4	67	17.7	7.2
0.40	40	13.4	32	8.5	6.6

- Hose connections:
38mm (1 1/2")
- Amperage Fuse:
12 V 5.9 - 7.4 amp 10.0 amp



Water Circulation Pump w/Brushless Motor

This extremely compact and lightweight 12volt fluid circulation pump is well suited for circulating water through heat exchangers on water intercooled turbo applications. Pump features a magnetic drive impeller with sealed pump chamber and brushless (up to 20,000 hour) motor for long life even with continuous use. High temperature capable (up to 212 degrees). Fluid connections for 3/4" i.d. (19mm) hose. Flow Rate 3 GPM at up to 2.5 psi. working pressure. Length 3.5", weight .55 lbs, current 12 volt 1.5 amp max. Pump is supplied with plug/connector.



Water Circulation Pump ACP4 \$139.50

Back Pressure Bar	Back Pressure		Flow		Amp 12V
	Psi	foot	l/min	GPM	
0.10	1.45	3.3	14.4	3.8	1.0
0.15	2.17	4.9	8.3	2.2	0.8
0.20	2.90	6.6	3.8	1.0	0.7



Electric Water Pump and Controller

In line electric water pump designed to take the place of standard mechanical belt driven pumps in most engine applications. Pump is both light weight (2 lbs.) and compact in size (5"x5"x3") with directional inlet/outlet fittings to be inserted in the lower radiator hose. Made from durable Nylon it is a centrifugal design with a 300-1300 gallon per hour flow rate depending on voltage 4-14 V DC. The pump is controlled remotely by a fully adjustable microprocessor unit. The control unit uses a thermo probe to sense temperature. Set the controller to the desired temperature and it will automatically adjust the rate of coolant flow by regulating the voltage to the pump. The water pump can supply coolant at a flow rate based on temperature, independent of engine RPM, which equates to more efficient cooling and can even be wired to run-on after hot engine shut down reducing heat soak.

Technical Specifications (Water Pump)

Operating Voltage	4V to 14.5V DC
Maximum Current	7.5A
Flow Rate	300-1300 gal/hr @ 13V DC
Operating Temp.	-5 F to 270 F
Pump Design	Clockwise centrifugal with volute chamber
Motor Life	2000 hrs continuous
Pump Weight	2 Lbs
Pump Material	Nylon 66
Maximum Pressure	50 psi
Hose Sizes	1 1/4" to 2"
Dimensions (HWD)	5" x 5" x 3"

Technical Specifications (Electric Control Unit)

Input Voltage	12V to 14.5V DC
Output Voltage	3V to 12V DC
Maximum Current	7.5A
Operating Temp.	-5 F to 140 F
Controller Type	Adjustable Microprocessor
Sensor Type	Thermal Coolant Sensor
Controller Weight	10 oz.
Dimensions (HWD)	3 3/4" x 2 9/16" x 2"

Electric Water Pump EWP1 \$269.00
Pump Controller EWPC1 \$165.00

