

| | |
|--------------|--------|
| Diamanté | 16, 17 |
| Milano Neck | • |
| Bodice Neck | • |
| Long Sleeve | • |
| Short Sleeve | |
| Sleeveless | • |
| Mens SP | • |
| Mens | |



Example Colour Combination:
Lilac Lycra, Grape Velour, Sugar Plum, Clear Diamanté



Example Colour Combination:
Gold Prism, Orange Prism, Red Prism



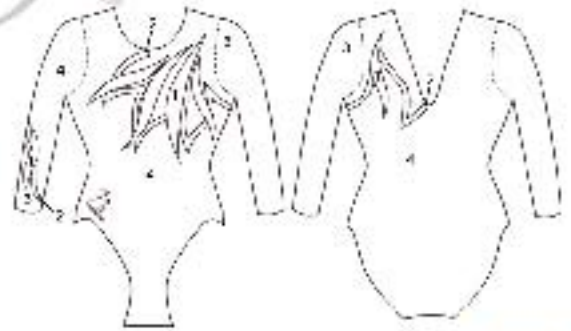
Back View



Example Colour Combination:
Glittermist Black, Ebony, Black Glitter, Cherry Red, Clear Diamanté



| | |
|--------------|--------|
| Diamanté | 16, 17 |
| Milano Neck | • |
| Bodice Neck | • |
| Long Sleeve | • |
| Short Sleeve | |
| Sleeveless | • |
| Mens SP | • |
| Mens | |



Example Colour Combination:
Powder Blue, Aqua, Glittermist White, Ice, Atlantic Diamanté



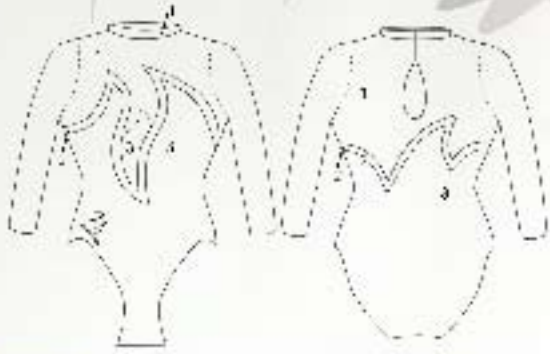
Example Colour Combination:
Lime, Neon Green Lycra, Glittermist natural, Clover Leaf, Peridot Diamanté

Example Colour Combination:
Cherry Red, Black Glitter, Platinum, Black Velour, Clear Diamanté



Back View

| | |
|--------------|------------|
| Diamanté | 11, 16, 17 |
| Milano Neck | • |
| Bodice Neck | • |
| Long Sleeve | • |
| Short Sleeve | • |
| Sleeveless | • |
| Mens SP | • |
| Mens | • |



Example Colour Combination:
Sugar Plum, Magenta Prism, Turq Velour,
Makalu Drop Diamanté



Example Colour Combination:
Clover Leaf, Neon Green, Forest Velour,
Makalu Drop Diamanté



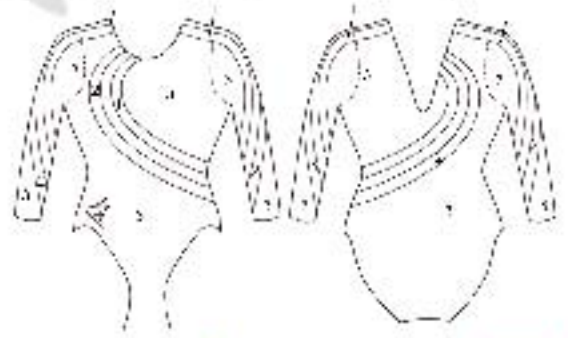
Back View



Example Colour Combination:
Ice, Powder Blue, Navy Velour,
Makalu Drop Diamanté



| | |
|--------------|--------|
| Diamanté | 16, 17 |
| Milano Neck | • |
| Bodice Neck | • |
| Long Sleeve | • |
| Short Sleeve | |
| Sleeveless | |
| Mens SP | • |
| Mens | |



Example Colour Combination:
Pink Flouro Foil, Orange Flouro Foil, Black Velour



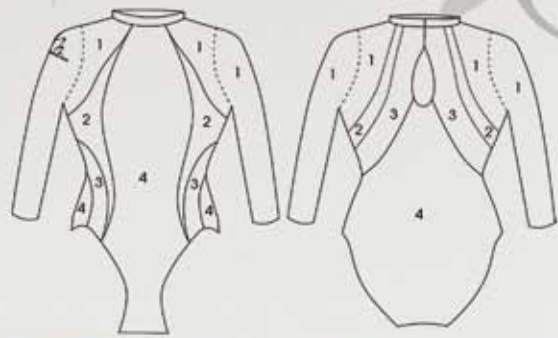
Example Colour Combination:
Ebony, Pineapple Crush,
Black Pearl Diamanté

Example Colour Combination:
Mermaid, Amazon, Platinum



Back View

| | |
|--------------|--------------------|
| Diamanté | 1ab,3ab,13ab,16,17 |
| Milano Neck | • |
| Bodice Neck | |
| Long Sleeve | • |
| Short Sleeve | • |
| Sleeveless | • |
| Mens SP | • |
| Mens | • |



Example Colour Combination:
Indian Ocean, Neon Green Lycra, Amazon, Navy Glitter



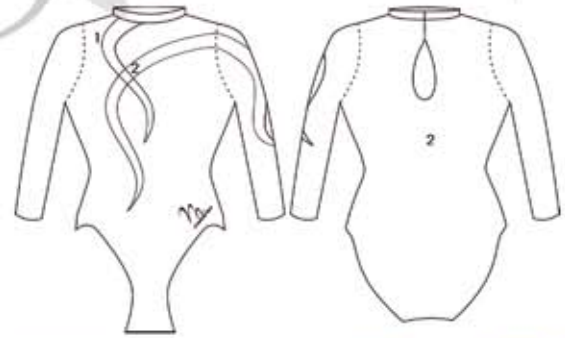
Example Colour Combination:
Cherry Red, Pineapple Crush, Tangerine Dream, Ebony, Spring Falls Diamanté



Example Colour Combination:
Pink Prism, Ice, Magenta Prism, Claret Velour, Spring Falls Diamanté



| | |
|--------------|--------|
| Diamanté | 16, 17 |
| Milano Neck | • |
| Bodice Neck | • |
| Long Sleeve | • |
| Short Sleeve | • |
| Sleeveless | • |
| Mens SP | • |
| Mens | |



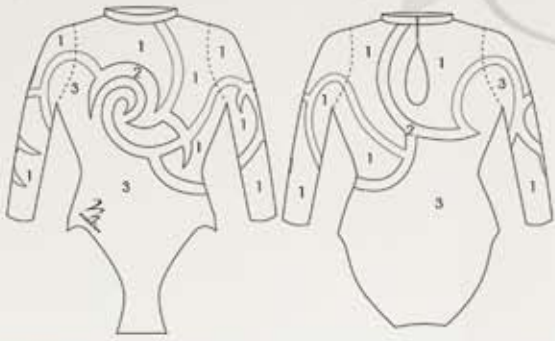
Example Colour Combination:
Green Flouro Foil, Indian Ocean,
Peridot Diamanté



Example Colour Combination:
Ice, Navy Glitter Velour,
Clear Diamanté

Example Colour Combination:
Magenta Prism, Thick White,
Crystal Volcano Diamanté

| | |
|--------------|-------|
| Diamanté | 16,17 |
| Milano Neck | • |
| Bodice Neck | • |
| Long Sleeve | • |
| Short Sleeve | |
| Sleeveless | • |
| Mens SP | • |
| Mens | • |



Example Colour Combination:
Magenta Prism, Pink Flouro Foil, Sugar Plum



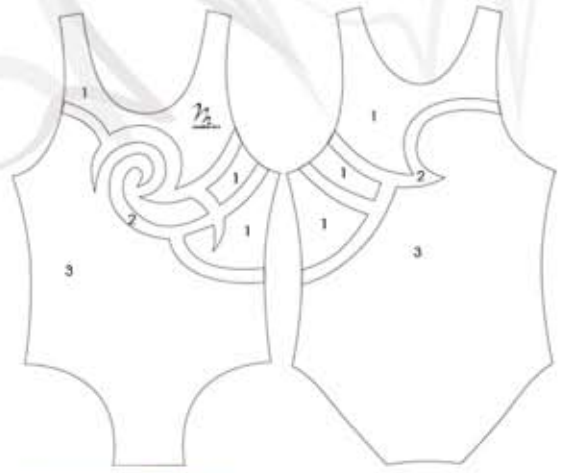
Example Colour Combination:
White Lycra, Navy Lycra, Blue Lycra



Example Colour Combination:
Ice, Ebony, Thick White,
Jet Hematite Diamanté



Example Colour Combination:
Grey Lycra, Black Lycra, Thick White Lycra

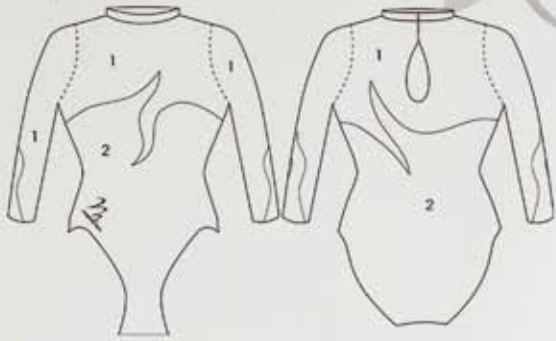


Example Colour Combination:
White Lycra, Navy Lycra, Blue Lycra



Example Colour Combination:
Red Lycra, Black Lycra, White Lycra

| | |
|--------------|-------------|
| Diamanté | 10ab, 16,17 |
| Milano Neck | • |
| Bodice Neck | • |
| Long Sleeve | • |
| Short Sleeve | • |
| Sleeveless | • |
| Mens SP | • |
| Mens | • |



Example Colour Combination:
Magenta Prism, Party Pink,
Clear Diamanté



Example Colour Combination:
Mermaid Prism, Navy Velour, Tangerine Dream



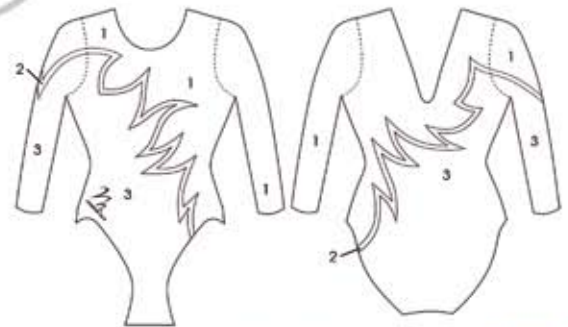
Back View



Example Colour Combination:
Jade Prism, Thick White,
Flare Diamanté



| | |
|--------------|----|
| Diamanté | 16 |
| Milano Neck | • |
| Bodice Neck | • |
| Long Sleeve | • |
| Short Sleeve | • |
| Sleeveless | • |
| Mens SP | • |
| Mens | • |



Example Colour Combination:
Orange Prism, Party Pink, Sugar Plum



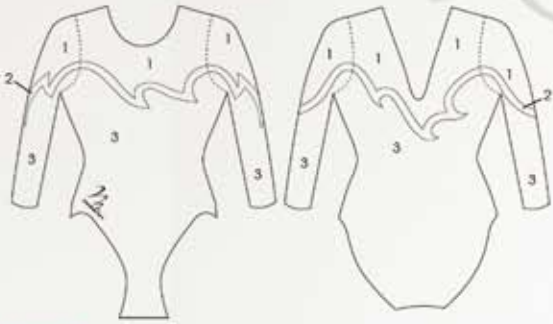
Example Colour Combination:
Platinum, Gold, Ebony



Back View

Example Colour Combination:
Mermaid, Platinum, Navy Velour,
Clear Diamanté

| | |
|--------------|-------|
| Diamanté | 16,17 |
| Milano Neck | • |
| Bodice Neck | • |
| Long Sleeve | • |
| Short Sleeve | • |
| Sleeveless | • |
| Mens SP | • |
| Mens | |



Example Colour Combination:
Clover Leaf, Flouro Green Foli, Black Velour, Perlot Diamanté



Example Colour Combination:
Indian Ocean, Platinum, Navy Velour



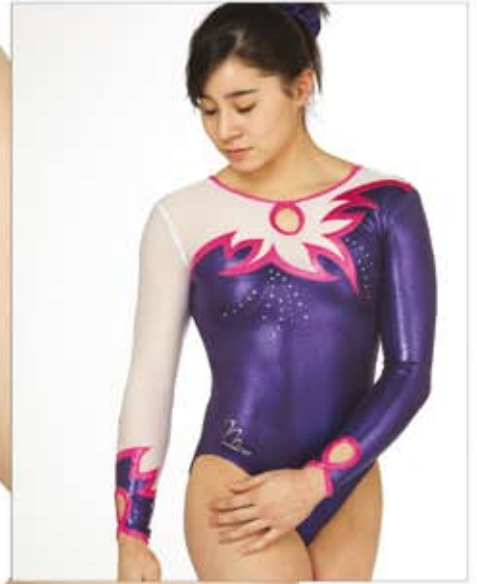
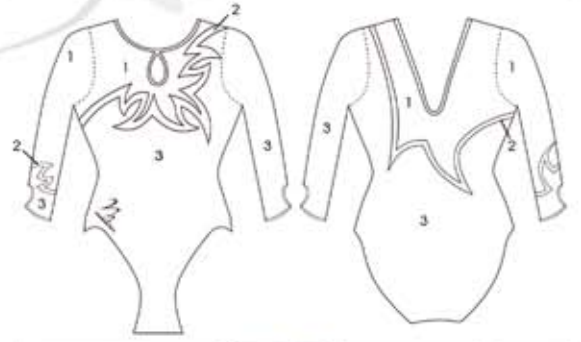
Back View

Example Colour Combination:
Glittermist Black, Tangerine Dream, Cherry Red, Fireopal Diamanté





| | |
|--------------|-------|
| Diamanté | 11,16 |
| Milano Neck | |
| Bodice Neck | • |
| Long Sleeve | • |
| Short Sleeve | • |
| Sleeveless | • |
| Mens SP | |
| Mens | |



Example Colour Combination:
Glittermist White, Party Pink, Sugar Plum
Makalu Drop Diamanté



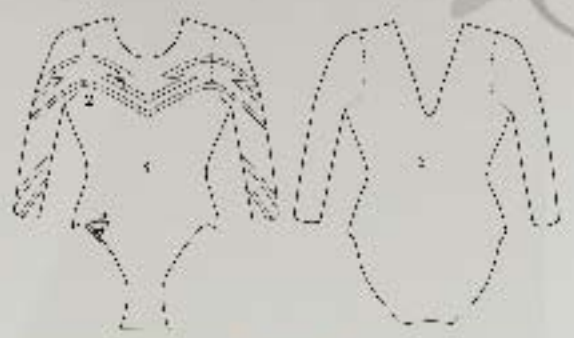
Example Colour Combination:
Glittermist White, Cherry Red, Paradise Blue,
Makalu Drop Diamanté



Back View

Example Colour Combination:
Orange Prism, Gold, Black Velour, Gold Binding

| | |
|--------------|-------|
| Diamanté | 16,17 |
| Milano Neck | • |
| Bodice Neck | • |
| Long Sleeve | • |
| Short Sleeve | |
| Sleeveless | • |
| Mens SP | • |
| Mens | |



Example Colour Combination:
Platinum, Cherry Red, Black Velour,
Clear Diamanté



Example Colour Combination:
Cherry Red, Amazon, Platinum,

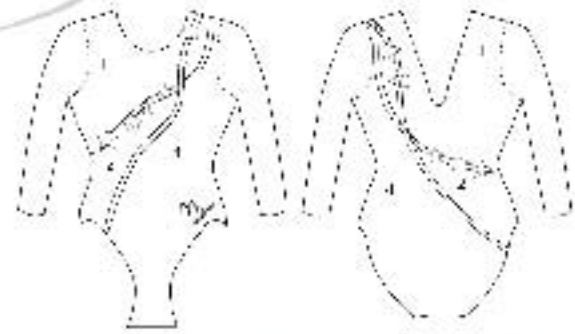


Example Colour Combination:
Damson Delight, Ebony, Platinum
Purple Velvet Diamanté

Arm View



| | |
|--------------|----|
| Diamanté | 12 |
| Milano Neck | • |
| Bodice Neck | • |
| Long Sleeve | • |
| Short Sleeve | |
| Sleeveless | • |
| Mens SP | |
| Mens | |



Example Colour Combination:
Perfect Pearl, Paradise Blue, Ice, Cherry Red
Callisto Star Diamanté



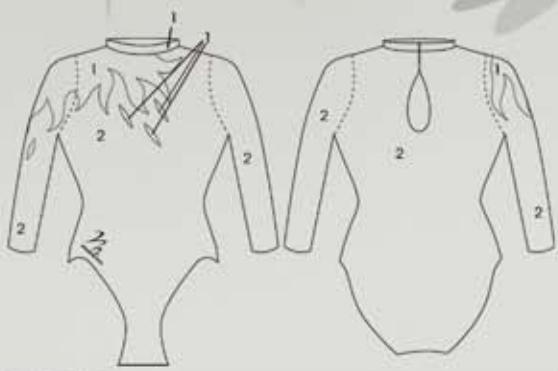
Example Colour Combination:
Platinum, Tangerine Dream, Ice, Indian Ocean
Callisto Star Diamanté



Back View

Example Colour Combination:
Perfect Pearl, Damson Delight, Ice, Ebony,
Callisto Star Diamanté

| | |
|--------------|---------------|
| Diamanté | 5, 6, 11, 16, |
| Milano Neck | • |
| Bodice Neck | • |
| Long Sleeve | • |
| Short Sleeve | |
| Sleeveless | • |
| Mens SP | |
| Mens | |



Example Colour Combination:
Platinum, Cherry Red, Silver Barbados Drop Diamanté



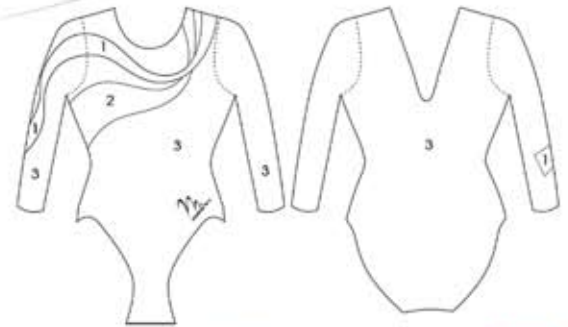
Example Colour Combination:
Jade Prism, Black Velour, Silver Barbados Drop Diamanté



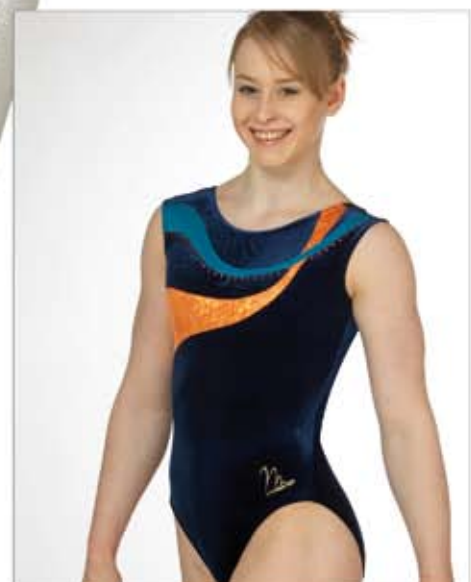
Example Colour Combination:
Magenta Prism, Sugar Plum,
Neon Pink Lycra Bondaweb



| | |
|--------------|--------|
| Diamanté | 16, 17 |
| Milano Neck | • |
| Bodice Neck | • |
| Long Sleeve | • |
| Short Sleeve | |
| Sleeveless | • |
| Mens SP | • |
| Mens | |



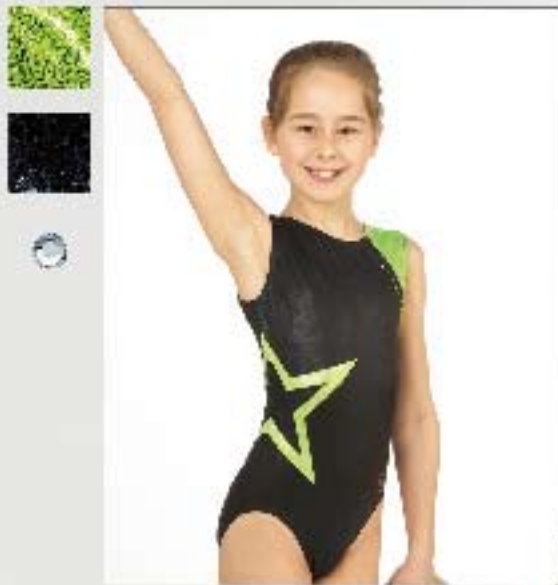
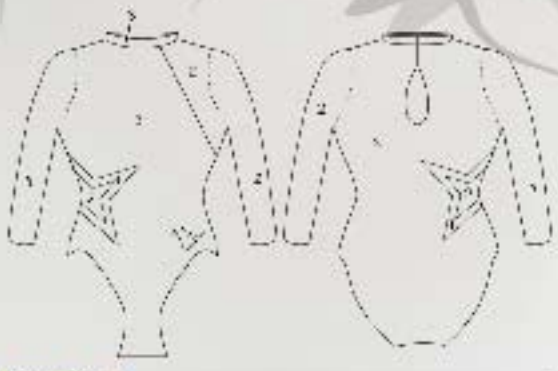
Example Colour Combination:
Cherry Red, Platinum, Ebony



Example Colour Combination:
Indian Ocean, Orange Prism, Navy Velour,
Sun Diamanté

Example Colour Combination:
Sugar Plum, Magenta Prism, Platinum
Fuschia Diamanté

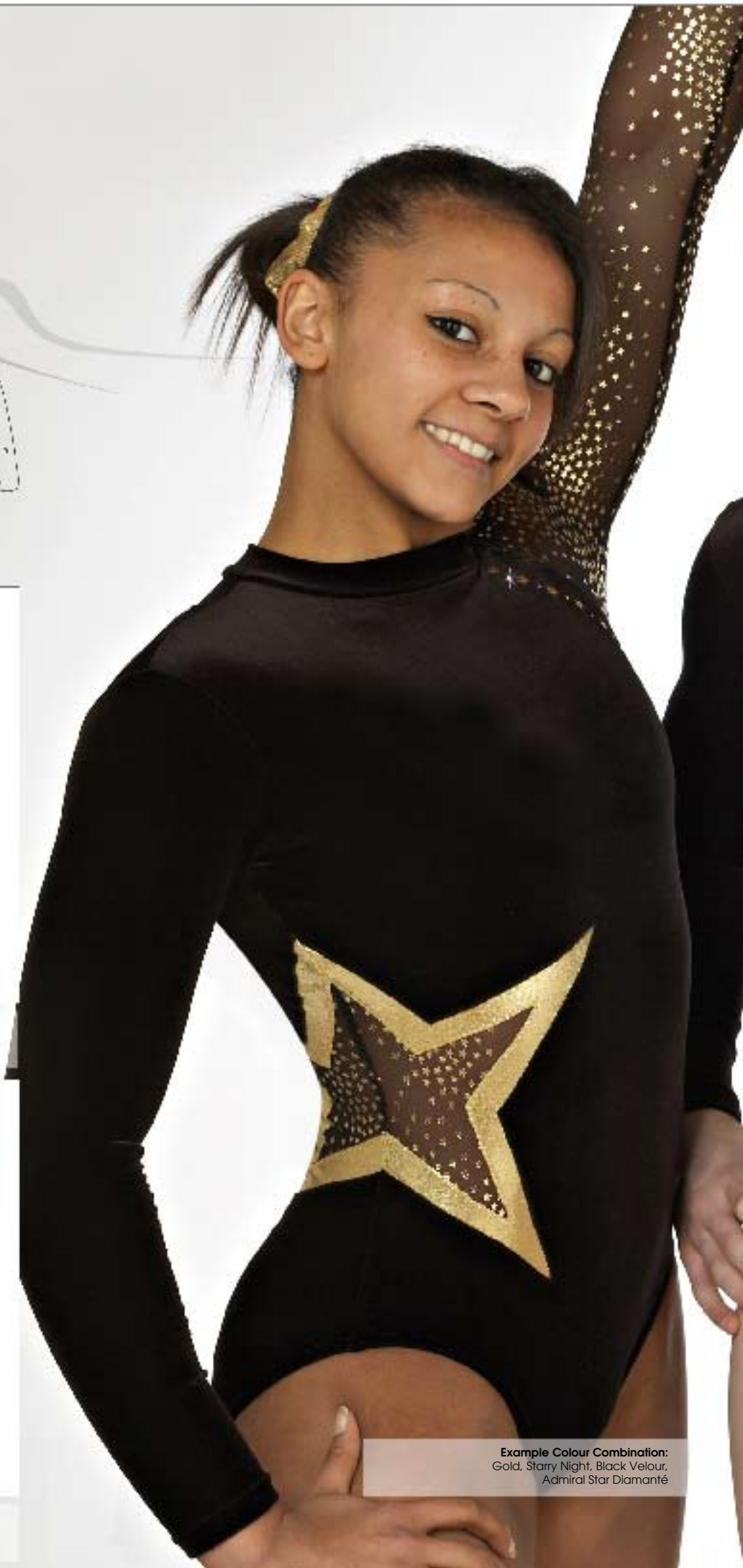
| | |
|--------------|-----------|
| Diamanté | 9ab,16,17 |
| Milano Neck | • |
| Bodice Neck | • |
| Long Sleeve | • |
| Short Sleeve | • |
| Sleeveless | • |
| Mens SP | • |
| Mens | • |



Example Colour Combination:
Lime, Ebony,
Clear Diamanté



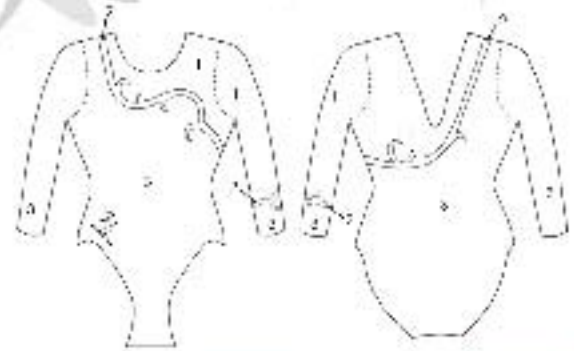
Example Colour Combination:
Platinum, Paradise Blue, Cherry Red
Admiral Star Diamanté



Example Colour Combination:
Gold, Starry Night, Black Velour,
Admiral Star Diamanté



| | |
|--------------|--------|
| Diamanté | 16, 17 |
| Milano Neck | • |
| Bodice Neck | • |
| Long Sleeve | • |
| Short Sleeve | • |
| Sleeveless | • |
| Mens SP | • |
| Mens | |



Example Colour Combination:
Magenta Prism, Ice, Claret Velour,
Clear Diamanté



Example Colour Combination:
Perfect Pearl, Powder Blue, Ice,
Clear Diamanté



Back View

Example Colour Combination:
Platinum, Gold, Black Velour,
Clear Diamanté

| | |
|--------------|-------|
| Diamanté | 16,17 |
| Milano Neck | • |
| Bodice Neck | • |
| Long Sleeve | • |
| Short Sleeve | |
| Sleeveless | • |
| Mens SP | • |
| Mens | |



Example Colour Combination:
Jade Prism, Platinum, Black Velour



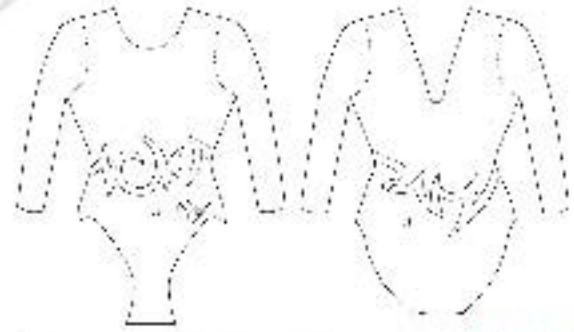
Example Colour Combination:
Powder Puff, Ice, Pink Prism



Example Colour Combination:
Platinum, Powder Blue, Amazon, Clear Diamanté



| | |
|--------------|-----|
| Diamanté | 16, |
| Milano Neck | • |
| Bodice Neck | • |
| Long Sleeve | • |
| Short Sleeve | • |
| Sleeveless | • |
| Mens SP | |
| Mens | |



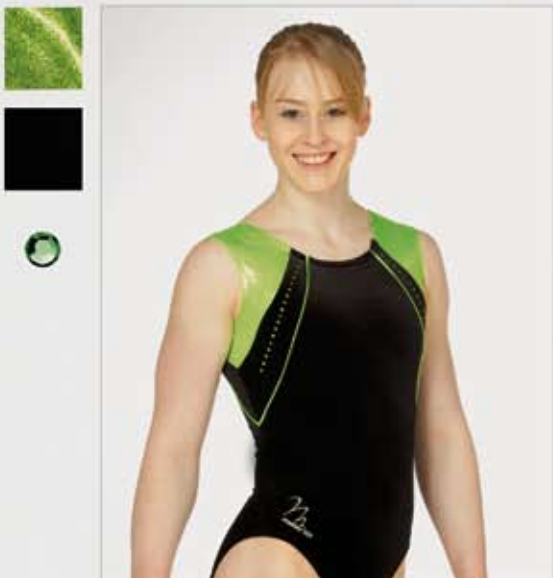
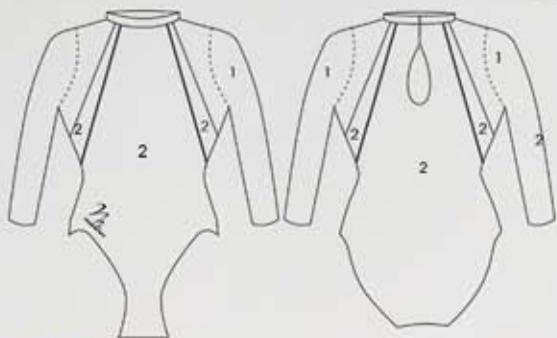
Example Colour Combination:
Cherry Red, Gold, Black Velour



Example Colour Combination:
Jade Prism, Neon Green, Turq Velour

Example Colour Combination:
Powder Blue, Platinum, Navy Velour

| | |
|--------------|------------------------|
| Diamanté | 1ab,3ab,9ab,13ab,16,17 |
| Milano Neck | • |
| Bodice Neck | • |
| Long Sleeve | • |
| Short Sleeve | • |
| Sleeveless | • |
| Mens SP | • |
| Mens | • |



Example Colour Combination:
Lime, Ebony, Lime Piping
Peridot Diamanté



Example Colour Combination:
Gold, Claret Velour, Gold Piping,
Gold Stud Diamanté



Back View



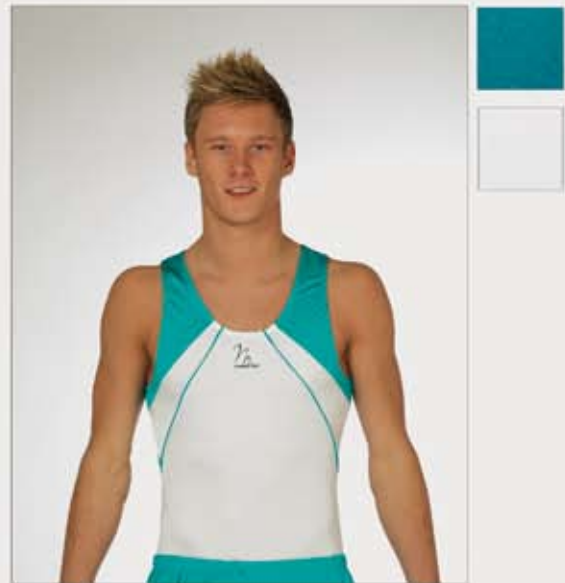
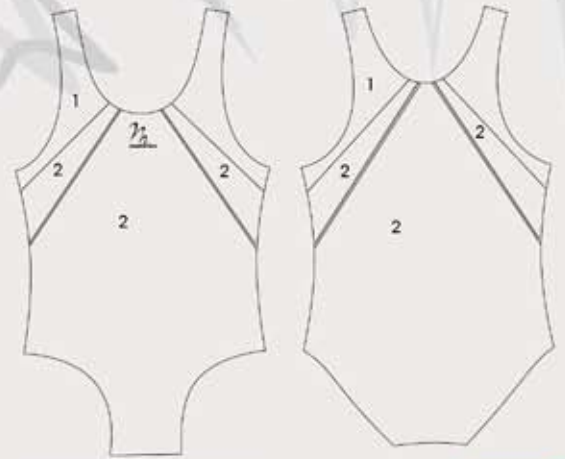
Example Colour Combination:
Orange Prism, Ebony, Tangerine Dream Piping,
Fire Opal Zodiac Diamanté



Example Colour Combination:
Neon Orange Lycra, Black Lycra, Neon Orange Piping.



Back View

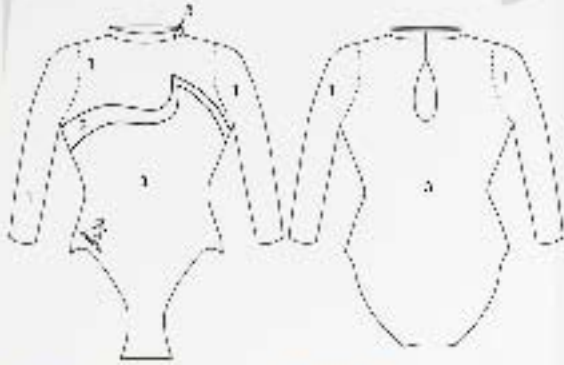


Example Colour Combination:
Jade Lycra, White Lycra, Jade Lycra Piping.



Example Colour Combination:
Black Lycra, Red Lycra, White Lycra Piping.

| | |
|--------------|----------|
| Diamanté | 4, 16,17 |
| Milano Neck | • |
| Bodice Neck | • |
| Long Sleeve | • |
| Short Sleeve | • |
| Sleeveless | • |
| Mens SP | • |
| Mens | • |



Example Colour Combination:
Sugar Plum, Jade Prism, Navy Velour,
Crescendo Diamanté



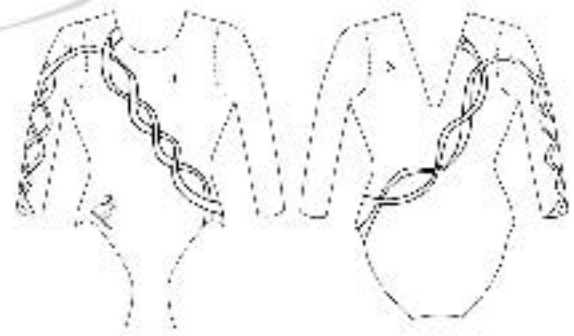
Example Colour Combination:
Platinum, Magenta Prism, Claret Velour
Clear Diamanté



Example Colour Combination:
Pineapple Crush, Orange Prism, Party Pink,
Light Topaz Diamanté.



| | |
|--------------|----|
| Diamanté | 16 |
| Milano Neck | • |
| Bodice Neck | • |
| Long Sleeve | • |
| Short Sleeve | • |
| Sleeveless | • |
| Mens SP | |
| Mens | |



Example Colour Combination:
Amazon, Cherry Red, Thick White,
Clear Diamanté



Example Colour Combination:
Platinum, Cherry Red, Ebony

Example Colour Combination:
Neon Orange, Neon Pink, Thick White



Example Colour Combination:
White Lycra, Blue Lycra, Navy Lycra



Example Colour Combination:
Red Lycra, Flouro Orange Foil, Black Lycra

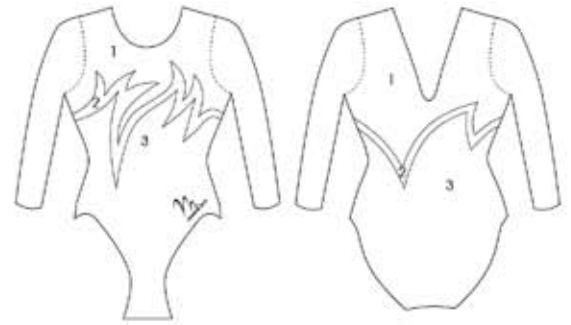


Back View



Example Colour Combination:
Emerald Lycra, Flouro Green Foil, Black Lycra

| | |
|--------------|-------|
| Diamanté | 16,17 |
| Milano Neck | • |
| Bodice Neck | • |
| Long Sleeve | • |
| Short Sleeve | • |
| Sleeveless | • |
| Mens SP | • |
| Mens | • |



Example Colour Combination:
Clover Leaf, Flouro Green Foil, Ebony



Back View



Example Colour Combination:
Cherry Red, Platinum, Party Pink



Example Colour Combination:
Perfect Pearl, Aqua, Powder Blue,
Jet Aurore Diamanté

| | |
|--------------|-------------------|
| Diamanté | 1ab, 2ab, 9ab, 17 |
| Milano Neck | |
| Bodice Neck | • |
| Long Sleeve | • |
| Short Sleeve | • |
| Sleeveless | • |
| Mens SP | |
| Mens | |



Example Colour Combination:
Indian Ocean, Navy Velour, Platinum Binding,
Clear Diamanté



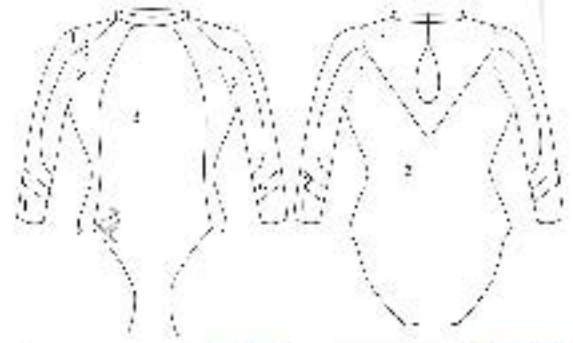
Example Colour Combination:
Orange Prism, Black Velour, Gold Binding



Example Colour Combination:
Cherry Red, Ebony, Ebony Binding,
Light Siam Diamanté



| | |
|--------------|----------------|
| Diamanté | 1ab, 3ab, 13ab |
| Milano Neck | |
| Bodice Neck | • |
| Long Sleeve | • |
| Short Sleeve | • |
| Sleeveless | • |
| Mens SP | |
| Mens | |



Example Colour Combination:
Jade Prism, Platinum, Mermaid



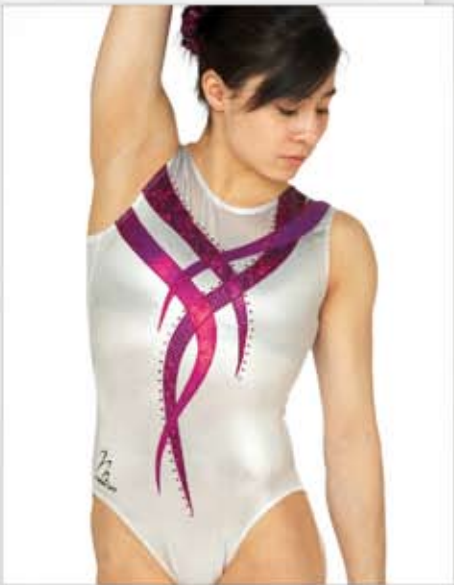
Example Colour Combination:
Magenta, Platinum, Claret Velour

Example Colour Combination:
Red Prism, Ebony, Red Velour,
Supernova Diamanté

| | |
|--------------|-------|
| Diamanté | 16,17 |
| Milano Neck | • |
| Bodice Neck | • |
| Long Sleeve | • |
| Short Sleeve | |
| Sleeveless | • |
| Mens SP | |
| Mens | |



Example Colour Combination:
Platinum, Jade Prism, Petrol Velour
Clear Diamanté



Example Colour Combination:
Danson Delight, Magenta Prism, Platinum
Crystal Volcano Diamanté

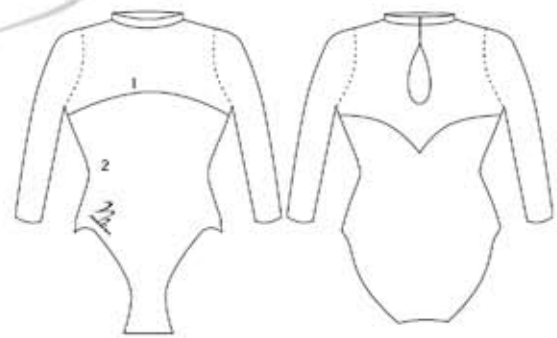


Arm View

Example Colour Combination:
Cherry Red, Paradise Blue, Thick White
Clear Diamanté



| | |
|--------------|---------------------|
| Diamanté | 1ab,2ab, 9ab,16, 17 |
| Milano Neck | • |
| Bodice Neck | • |
| Long Sleeve | • |
| Short Sleeve | • |
| Sleeveless | • |
| Mens SP | • |
| Mens | |



Example Colour Combination:
Ice, Lilac Lycra, Sugar Plum Piping
Admiral Star Diamanté



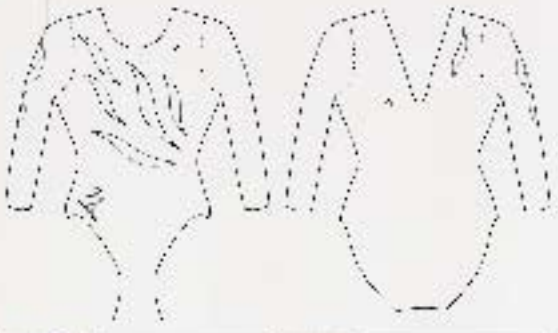
Example Colour Combination:
Starry Night, Black Velour, Gold Piping
Cluster Diamanté

Example Colour Combination:
Cherry Red, Paradise Blue, Platinum,
Cluster Diamanté



Back View

| | |
|--------------|------------------|
| Diamanté | 7, 8, 15, 16, 17 |
| Milano Neck | • |
| Bodice Neck | • |
| Long Sleeve | • |
| Short Sleeve | |
| Sleeveless | • |
| Mens SP | • |
| Mens | • |



Example Colour Combination:
Magenta Prism, Claret Velour,
Cuba Drop Diamanté



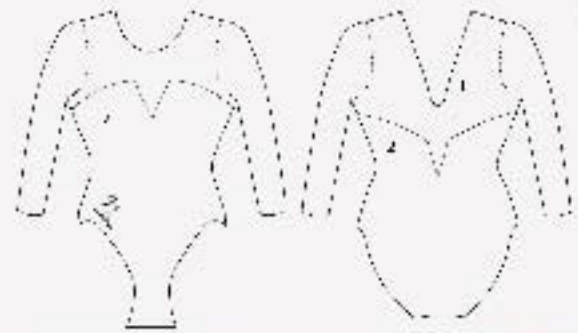
Example Colour Combination:
Tangerine Dream, Cherry Red, Ebony,
Cyprus Wave Diamanté



Example Colour Combination:
Ice, Black Velour,
Clear Cuba Drop Diamanté



| | |
|--------------|----------|
| Diamanté | 14,16,17 |
| Milano Neck | • |
| Bodice Neck | • |
| Long Sleeve | • |
| Short Sleeve | • |
| Sleeveless | • |
| Mens SP | • |
| Mens | |



Example Colour Combination:
Winter Berry, Claret Velour,
Clear Diamanté



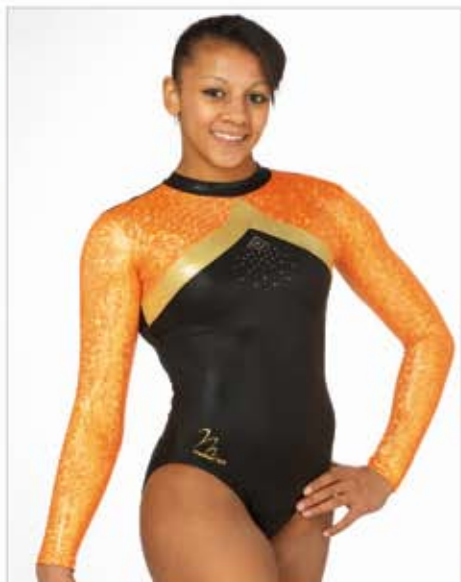
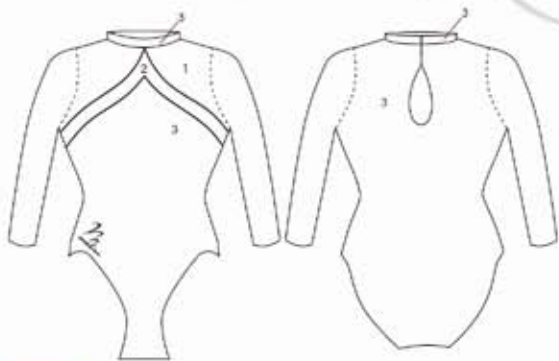
Example Colour Combination:
Mermaid, Navy Velour,
Clear Diamanté & Quartz Diamanté

Example Colour Combination:
Ice, Black Velour, Clear Diamanté

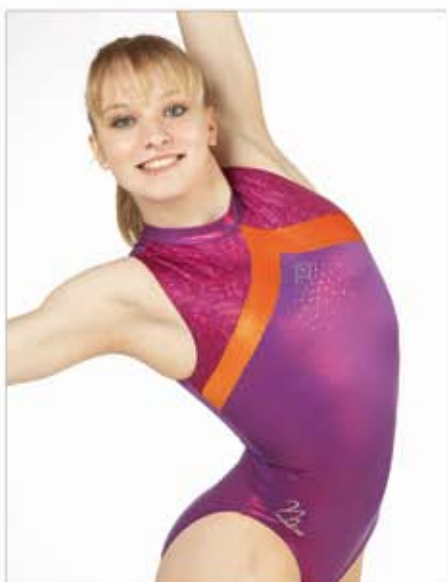


Back View

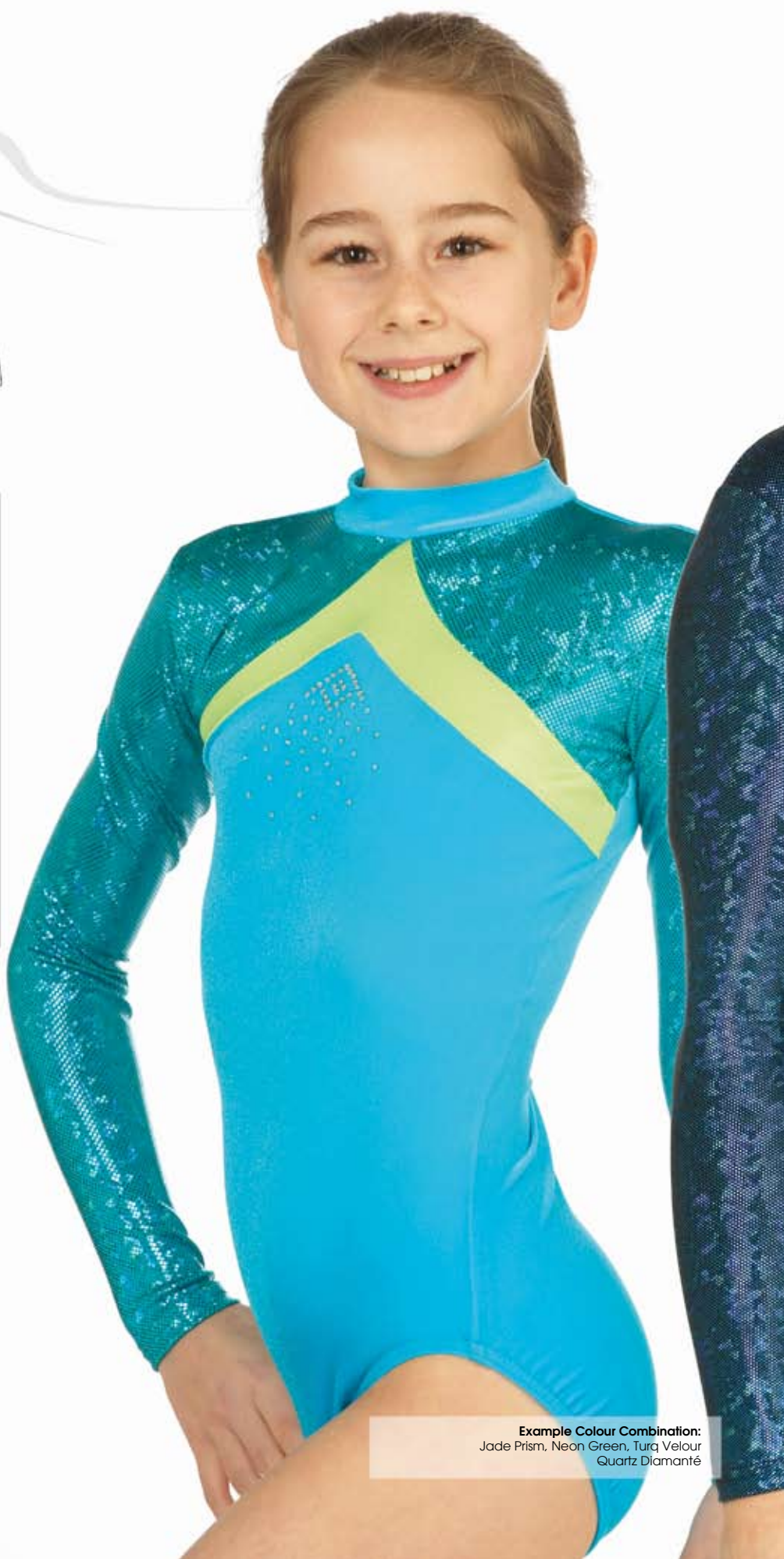
| | |
|--------------|------------|
| Diamanté | 14, 16, 17 |
| Milano Neck | • |
| Bodice Neck | • |
| Long Sleeve | • |
| Short Sleeve | • |
| Sleeveless | • |
| Mens SP | • |
| Mens | |



Example Colour Combination:
Orange Prism, Gold, Ebony,
Quartz Diamanté



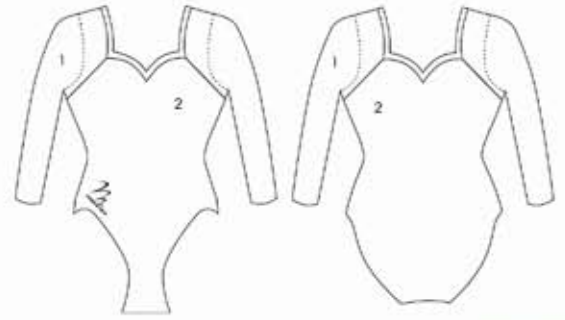
Example Colour Combination:
Magenta Prism, Tangerine Dream, Damson Delight,
Quartz Diamanté



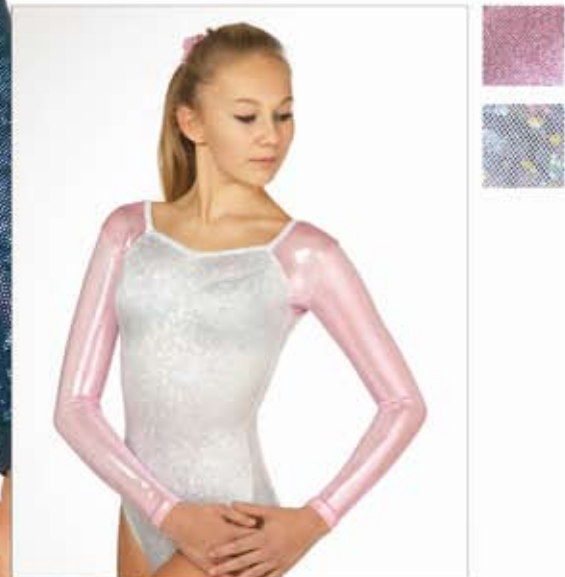
Example Colour Combination:
Jade Prism, Neon Green, Turq Velour
Quartz Diamanté



| | |
|--------------|--------------|
| Diamanté | 13ab, 16, 17 |
| Milano Neck | |
| Bodice Neck | |
| Long Sleeve | • |
| Short Sleeve | • |
| Sleeveless | |
| Mens SP | |
| Mens | |



Example Colour Combination:
Magenta Prism, Grape Velour, Grape Velour Binding
Clear Diamanté



Example Colour Combination:
Powder Puff, Ice, Ice Binding

Example Colour Combination:
Mermaid Prism, Navy Velour, Navy Velour Binding
Supernova Diamanté



Back View

| | |
|--------------|--------|
| Diamanté | 16, 17 |
| Milano Neck | • |
| Bodice Neck | • |
| Long Sleeve | • |
| Short Sleeve | • |
| Sleeveless | • |
| Mens SP | • |
| Mens | • |



Example Colour Combination:
Mermaid, Platinum, Indian Ocean, Navy Velour



Example Colour Combination:
Cherry Red, Thick White Lycra,
Clear Diamanté



Example Colour Combination:
Platinum, Cherry Red, Tangerine Dream, Ebony
Sun Diamanté, Light Slam Diamanté, Clear Diamanté



Example Colour Combination:
Grey Lycra, Red Lycra, Neon Orange



Example Colour Combination:
Red Lycra, White Lycra, Blue Lycra, Navy Lycra



Example Colour Combination:
Blue Lycra, White Lycra



Microfibre has become the mainstay of any tracksuit range but if you want something a little different, that makes a strong statement about your clubs individual identity we present a range of striking styles in velour.

After leotards, the tracksuit is the most visible part of any gymnasts' kit and it is important to ensure that you and your club look as good as you feel. We have a comprehensive range of tracksuit designs and materials, all of which can be personalised to your taste with your Club name, logo and sponsors' details.

Presented here is just a small selection of our range. More details can be found on our web site or in our separate tracksuit brochure. Many designs can be supplied from stock and we can also vary any of the colours to suit your Club, subject to a minimum order of 30.





Ladies apollos, falcons and bodices can be ordered in any of the colour or material choices detailed on page 3. Subject to a minum order of 12, and 6 for repeat orders.







Team CHEER

Cheerleading & Majorettes

Milano is delighted to present the Cheerleaders' Range.

Drawing on the best of our experience and knowledge in Gymnastics, we can offer suits that will add glamour and flair to the excitement and enthusiasm of any Cheerleading event.

The styles shown here are only suggestions. You can choose from most of the designs shown throughout this brochure which can be adapted to your Cheer Dance suit.

Just let our Club specialists know which design you would like and we will do the rest!

This is just an example of some of the catsuits we can produce, Most of our standard leotard designs can be modified into a catsuit. Please contact our Club specialist for more information.



CUBA CATSUIT

Example Colour Combination:

Lime, Black Velour, Clear Cuba Drop Diamanté





SNOWDROP CATSUIT

Example Colour Combination:
Cherry Red, Platinum, Glittermist Black, Ebony
Clear Diamanté.



TROPICANA CATSUIT

Example Colour Combination:
Tangerine Dream, Cherry Red, Black Velour





Example Colour Combinations

CYCLES



Amazon

HIPSTERS



Navy Velour

SHORTIES



Lilac Lycra

3/4 LEGGINGS



Blue Velour

SHORTIES



Jade Lycra



Yellow Lycra

GENERAL INFORMATION

Please be advised that due to perspiration and deodorant, shorties and crop tops etc made from foiled / metallic fabrics may show some loss of foil in certain areas.

Although we do offer garments in these fabrics, we strongly recommend using lycra or velour for prolonged use.

Plain crop tops, leggings, shorties and hipsters can be ordered in any colour / fabric as shown on page 3. Subject to a minimum order of 6



SHORTIES



yellow lycra

3/4 LEGGINGS



Jade Velour

SHORTIES



Black Velour

CYCLES



Red Velour

SHORTIES



Sugar Plum

HIPSTERS



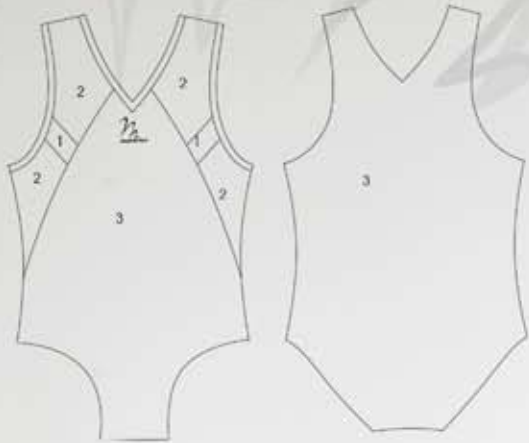
Indian Ocean











Example Colour Combination:
Black Lycra, Grey Lycra, White Lycra



Example Colour Combination:
Blue Lycra, White Lycra, Red Lycra



Back View



Example Colour Combination:
Turq Lycra, White Lycra, Black Lycra



Example Colour Combination:
Red Lycra, Marine Lycra, White Lycra



Example Colour Combination:
Turq Velour, Neon Green, Navy Lycra



Back View

Example Colour Combination:
White Lycra, Flouro Orange Foil, Turq Lycra



Example Colour Combination:
White Lycra, Red Lycra, Blue Lycra



Example Colour Combination:
White Lycra, Jade Lycra, Navy Lycra



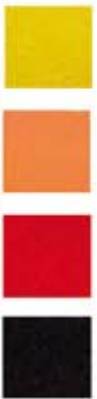
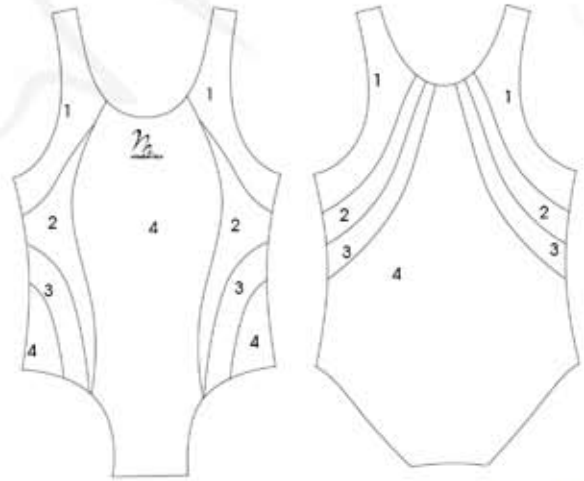
Example Colour Combination:
Red Lycra, Flouro Orange Foli, Black Lycra



Example Colour Combination:
White Lycra, Neon Green, Emerald Lycra,
Navy Lycra



Back View



Example Colour Combination:
Yellow Lycra, Neon Orange, Red Lycra, Black Lycra



Example Colour Combination:
Black Lycra, White Lycra, Purple Lycra

MENS APOLLO

Blue Lycra



Neon Orange



Grey Lycra



Jade Lycra



Navy Lycra



Purple Lycra



Yellow Lycra



GENERAL INFORMATION

Men's apollos, shorts and stirrups can be ordered in any colours or fabrics shown on page page, subject to a minimum order of 6.

MENS FREESTYLE



Red Lycra



Marine Lycra



Neon Green



Black Lycra



White Lycra



Turq Lycra



Emerald Lycra



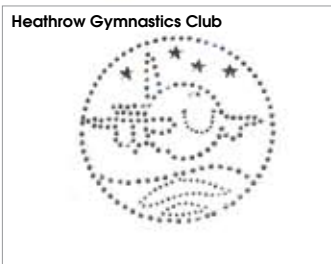
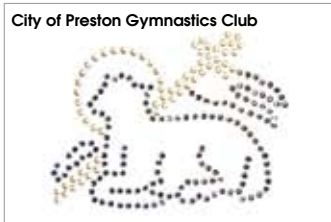
Milano now has a wide range of leisurewear for your club to choose from, we are able to source almost anything you require, from Hooded sweatshirts to Holdalls.

You can have a team logo or design either made up in diamantés,embroidered, screen printed, or cammed.

For branded diamantés, there is a minimum order quantity of 100, but dont worry if you have any left over, as you can put these on any garment you require, even to match your club leotard!
For camm, the minimum quantity for a new design is 12 and for repeat orders, 6. Camm can be placed on any garment in several different colours shown below.

Screen printing and embroidery is also available. Please contact our club specialist for more information on prices and quantities. Feel free to send in your ideas and our design team can help you by providing examples of styles and fonts to get the right look for your club.


For further information on Brand your club, please contact our club specialists.




Creative Crystals
Available in 27 colours
and 9 sizes
(Request a sample book)



Creative Nailheads
Available in 34 colours
and 12 sizes
(Request a sample book)



Creative Studs
Available in 18 colours
and 5 sizes
(Request a sample book)

Examples of Camm colour options

If you cannot see a colour you would like then please contact us because we may be able to source a specific colour of camm for your design



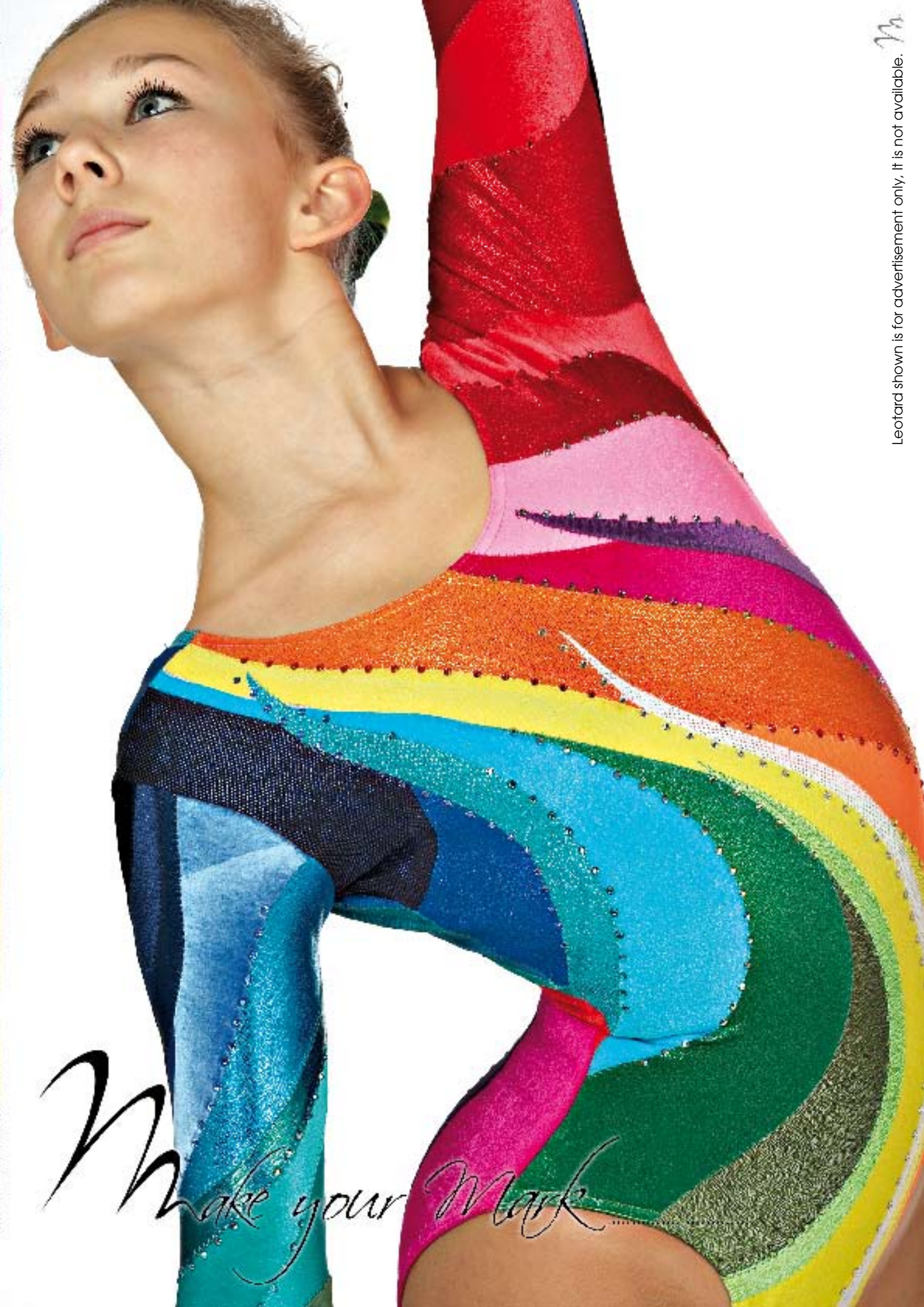


ACCESSORIES

We have a wide range of accessories to compliment your club's kit, including scrunchies and grip bags available in any fabric on our colour palette on page 3.

We also have a wide range of shoes, hand guards and wristbands.

To find out more about these accessories, you can request one of our seasonal brochures, visit our website at www.milano-pro-sport.com or contact one of our sales team.



Make your Mark

M
Leotard shown is for advertisement only, It is not available.