

# COPPARD

## Plant Hire Limited



Crowborough

Godstone

Brighton

**01892 662777**

**01883 743322**

**01273 596979**

Established 1972

[www.coppard.co.uk](http://www.coppard.co.uk)



Trade Price List + 10% Non Account Customers

Access Equipment5-7

- Access Equipment
- Bandstands
- Boom Lifts
- Ladders
- Non Mechanical
- Scaffold Towers
- Scissor Lifts

Agricultural7

- Agricultural Implements
- Tractors

Bowers7

- Fuel Bowers
- Water Bowers

Breakers8

- Electrical Breakers
- Independent Breakers

Clothing9

Compaction- Rollers10

- Rollers - Vibrating
- Wacker Plates

Compressors & Tools11

- Compressors
- Compressor Equipment

Concreting12-15

- Concrete Mixers
- Preparation & Finishing Equipment

Cranes16-24

- Crane Attachments
- Crawler Cranes
- Glass Lifters
- Loading Charts
- Pick and Carry Cranes
- Tower Cranes

Dozers21

Drainage Equipment21

Dumpers22-27

- High Discharge
- Hydraulic Tip
- Low Ground Pressure
- Narrow Access
- Power Swivel
- Power Swivel - Tracked
- Rubber Tracked
- Tracked Dumpers with Cranes
- Utility Vehicles

Electrical Plant - Various27

Excavators28-32

- 180 Degree
- 360 Degree
- 360 Degree Offset and Blade
- Accessories
- Breakers
- Excavator Attachments

Forestry Equipment33

Gardening34

Generators35

- Dual Voltage

Graders36

Grinders36

Hand Tools37

Loading Shovels37

- Rubber Tyres
- Tracked

Lighting38

Lorries39-40

- Loading Charts

Manual Handlers41

- Block and Tackles
- Hydraulic Jacks
- Load Movers
- Winches

Materials Handling42-45

- Forklifts
- Lifting Chains
- Material Lifts
- Shackles
- Skidsteer Attachments
- Skidsteers
- Strops
- Telescopic Handlers
- Telescopic Handlers - Attachments

Props, Acrows & Trench37

- Site Excavations
- Acrow Props

Pumping - Washing46-47

- Hose
- Pressure Washers
- Pumps
- Water Supply

Recycling Equipment47

- Concrete Crusher
- Crusher Bucket

Roadworks - Paving48-51

- Asphalt Hot Boxes
- Cold Emulsion Sprayers
- Hot Emulsion Sprayers
- Kerb Lifters & Cutters
- Pavers and Chippers
- Planers
- Road Sweepers
- Road Work Equipment
- White Lining Machines

ROLLERS  
PAGE 10

Saws52

Security Fencing53

Site Equipment53-55

- Accommodation
- Barbecues
- Cable Locators
- Dehumidifiers
- Gas Detectors
- Heating
- Laser Levels
- Levels
- Office Equipment
- Protection

Trailers56

- Trailers
- Roller Trailers

Transformers and Leads56

- Extension Leads
- Transformers

Trenchers57

Woodworking Tools58

Welding Equipment58



# GENERAL TERMS PLANT AND EQUIPMENT HIRE

01. Our terms are strictly net - receipt of payment being required by the end of the month following date of invoice.

02. We shall be pleased to open a credit account on provision of satisfactory bank references etc.

03. All hire rates exclude VAT which is an additional charge.

04. A minimum charge of £10.00 applies on all hires.

05. The cleaning of any plant returned will be charged at cost.

06. Our terms and conditions of hire are CPA conditions, and are shown on the reverse of our "Hire Agreement" a copy of which is available on request.

07. Unless otherwise agreed in writing the Hirer is responsible for insuring against liabilities as set out in the "Hire Agreement."

08. All plant offered at a weekly rate is based on a 5 day - 40 hour week.

09. Damage is chargeable to the Hirer's account - fair wear and tear excepted. Repair of punctures is the Hirers responsibility.

10. Missing items are charged at full replacement cost and the Hirer will be responsible at two-thirds rate until the account is settled.

11. The Hirer is responsible for all fuels water, grease, oils.

12. Transport to and from site is chargeable as an extra.

13. All hire rates and minimum periods of hire are subject to alteration without prior notice.



# ACCESS EQUIPMENT

Access Equipment - Non Mechanical				
Code	T45			Per Week
35/02	Gin wheel + demolition basket			£15.00
35/03	Scaffold boards - min hire 2 weeks			£1.00
35/04	Scaffold poles - per foot - min hire 1 month			£0.11
35/07	Youngmans - 4.8 m			£15.00
35/08	Youngmans - 5.4 m			£17.00
35/13	Youngmans - 6.0 m			£20.00
35/12	Youngmans Safety Rails - 4.8 m long			£10.00
69/04	Impact-bull - Inflatable Air Cushions*			£4.00 each
MINIMUM HIRE 1 WEEK				

Bandstands					
Code	T47		Closed	Open	Per Week
35/01	Bandstand	Size: 0	0.48 m	0.84 m	£2.20
35/01	Bandstand	Size: 1	0.76 m	1.37 m	£2.20
35/01	Bandstand	Size: 2	1.00 m	1.82 m	£2.20
35/01	Bandstand	Size: 3	1.30 m	2.43 m	£2.20



Ladders				
Code	T46	Closed	Open	Per Week
47/01	Step Ladder	1.90 m	1.90 m	£10.00
47/01	Step Ladder	2.40 m	2.40 m	£10.00
47/02	Double Ladder*	2.54 m	4.50 m	£12.00
47/03	Double Ladder*	4.85 m	8.61 m	£16.00
47/03	Triple Ladder*	2.50 m	5.60 m	£16.00
*ROOF HOOK ATTACHMENTS AVAILABLE				

Access Equipment – Scaffold Towers				Plant Specifications			
Code	T45.01	Per Week	Max Kg	Length mm	Width mm	Platform Height M	Working Height M
35/32	Scaffold Tower	£50.00	275*	1450-1800	1450	2.2	4.4
35/33	Scaffold Tower	£60.00	275*	1450-1800	1450	4.2	6.4
35/34	Scaffold Tower	£70.00	275*	1450-1800	1450	6.2	8.4
35/35	Scaffold Tower	£80.00	275*	1450-1800	1450	8.2	10.4
35/36	Scaffold Tower	£90.00	275*	1450-1800	1450	10.2	12.4
35/37	Scaffold Tower	£50.00	275*	1450-1800	850	2.2	4.4
35/38	Scaffold Tower	£60.00	275*	1450-1800	850	4.2	6.4
35/39	Scaffold Tower	£70.00	275*	1450-1800	850	6.2	8.4
35/40	Scaffold Tower	£80.00	275*	1450-1800	850	8.2	10.4
35/41	Scaffold Tower	£90.00	275*	1450-1800	850	10.2	12.4
35/15	Razor Deck - Self Erecting Scaffold Tower	£50.00	150	1600	800	0.55 - 1.00 - 2.00	2.75 - 3.20 - 4.20
35/14	Razor Deck - Self Erecting Scaffold Tower	£80.00	250	2000	1000	1.20 - 1.80 - 3.60	3.40 - 4.00 - 5.80
*THE SAFE WORKING LOAD IS 275 KGS, PER PLATFORM LEVEL, UNIFORMLY DISTRIBUTED UP TO A MAXIMUM OF 950KGS, PER TOWER (INCLUDING SELF WEIGHT)							



Access Equipment - Mechanical - Scissor Lifts				Plant Specifications			
Code	T44	Per day	Per Week	Width mm	Height mm	Capacity KG	Working Height M
11/20	Youngman Boss x 3 Scissor Lift Electric	£40.00	£200.00	700	1800	240	4.55
11/04	Nichi Skytower - Tracked Access Platform - Electric	£40.00	£200.00	1040	2030	220	5.0
11/03	Yanmar Access Platform - White Tyres - Electric	£45.00	£225.00	1870	2230	500	6.5
11/12	Genie GS 1930 - Electric	£75.00	£250.00	813	2000	227	7.8
11/12	SkyJack SJ4626 - Electric	£75.00	£250.00	1170	2150	454	9.8
11/15	SkyJack SJ6832E - Electric	£75.00	£250.00	1730	2510	454	11.5
11/16	SkyJack SJ8241F - Diesel - 4 x 4	£100.00	£350.00	2010	1650	908	14.3
60/17	Safety harness - body	£15.00					
69/04	Impact-bull - Inflatable Air Cushions* Softening the Blow - A Fall Protection System	N/A	£4.00				
* REQUIRE 45/08 LEAF BLOWER TO INFLATE							



Access Equipment - Mechanical - Boom Lifts				Plant Specifications			
Code	T44.01	Per Day	Per Week	Width mm	Height mm	Capacity KG	Working Height M
11/05	Hitachi EX55 - Tracked	£95.00	£475.00	2010	2260	200	10.0
11/17	Nifty 120PET - Trailer Mounted - Petrol / Electric	£100.00	£350.00	1500	1900	200	12.2
11/06	CTE 135T Diesel / 110V (CAP 200Kg)	£140.00	£550.00	780	2000	200	13.3
11/02	Upright AB38N Hoist - Electric	£130.00	£550.00	1500	2000	215	13.5
11/06	Octopussy 1465 Hoist - Narrow Access - Petrol / Electric	£140.00	£550.00	850	1995	120	14.0
11/02	JLG Access Hoist - Diesel	£125.00	£625.00	1750	2000	220	15.0
11/07	Grove Hoist AMZ50XT - 4 x 4 - Four Wheel Steering	£150.00	£750.00	1820	2110	250	15.0
11/02	Haulotte H 16 TPX - 4 x 4 - Four Wheel Steering	£140.00	£625.00	2300	2200	230	15.44
11/02	Haulotte HA 16 PX - 4 x 4 - Four Wheel Steering	£140.00	£625.00	2300	2200	230	16.00
11/14	Maniaccess 180ATJ - 4 x 4 - Four Wheel Steering	£170.00	£850.00	2300	2530	230	17.65
11/13	Hinowa Light Lift 19.65 - Petrol / 110 V - Cage Width 1480 mm	£170.00	£600.00	790	1980	200	18.8
11/09	Upright SB60 Boom Lift - Rubber Tyred	£180.00	£900.00	2430	2600	220	20.3
11/18	Teupen Leo 23GT Spiderlift - Tracked Telescopic Boom	£350.00	£1275.00	980	1980	200	23.00
60/17	Safety harness - body	£15.00					



AGRICULTURAL



Tractors				
Code	T83	Per day	Per Week	Horse Power
61/04	Kubota B2410	£60.00	£300.00	24
61/03	Ford 333 - 2WD with Rotovator *	£85.00	£425.00	40
* WEAR CHARGED EXTRA				

Agricultural Implements			
Code	T84	Per day	Per Week
62/32	Harrow - Disc - to suit Mini Tractor - Eight Blades*	£10.00	£50.00
62/07	Harrow - Rigid - to suit Kubota tractor*	£10.00	£20.00
62/20	Harrow - Power - to suit Kubota tractor*	£40.00	£200.00
62/32	Levelling Box to suit Kubota tractor	£10.00	£25.00
62/20	Rotovator - to suit Kubota tractor *	£40.00	£200.00
62/34	Topper to suit Kubota tractor*	£40.00	£200.00
62/13	Mole Plough - Single Leg*	£20.00	Request
62/09	Gang Mowers - 5 cylinders	£80.00	£225.00
* WEAR CHARGED EXTRA			



Fuel Bowsers			
Code	T63	Per Week	Volume Gallons
60/14	Fuel Bowser - Skid Mounted - Bunded	£30.00	250
60/55	Fuel Bowser - Trailer Mounted - C/W Pump, Hoses and Nozzle	£40.00	250



Water Bowsers				
Code	T64	Per Day	Per Week	Volume Gallons
60/38	Water Bowser Trailer	N/A	£25.00	250
60/53	Water Bowser Trailer	N/A	£30.00	500
60/38	Water Bowser Trailer - C/W 1” Water Pump (32/04)	£40.00	£60.00	250
60/53	Water Bowser Trailer - C/W 1” Water Pump (32/04)	£45.00	£65.00	500



BREAKING

Independent Breakers			
Code	T59	Per Day	Per Week
40/02	Panther - Hydraulic	£25.00	£45.00
40/03	Medium Gun Available - Clayspade	£5.00	£20.00
40/04	1.75" Water pump available - Hydraulic driven drill	£8.00	£21.00
28/23	Voct VH25 Breaker - Floor/wall tile remover*	£45.00	£200.00
* REQUIRES AIR COMPRESSOR - SHARPS CHARGED AT £2.45 EACH			



We stock a wide range of  
Excavator Mounted Breakers  
Plus a Mobile Concrete Recycling Plant



Electrical Breakers				
Code	T60	Per Day	Per Week	Power Supply
41/01	Makita 3850K	£20.00	£25.00	110v
41/03	Makita HM 1800	£25.00	£44.00	110v
PERCUSSION CORE DRILL AVAILABLE FOR 3850K / SHARPS CHARGED AT £1.45 EACH				

Protective Clothing & Workwear

We are pleased to offer you a selection of high quality Workwear and protective clothing. Available from our Brighton branch.

Supply from Crowborough and Godstone branches by arrangement.

**We stock:**  
Snickers, Dickies, Portwest, Blyth, 3M, Centurian, Tyvec, Footsure, Penn and Carrie.

First Aid kits, Hi-Vis Vests & Jackets, Waterproof suits, Boots, Wellingtons, Helmets, Gloves, Boiler suits, Masks, Warehouse coats, Work jackets & Trousers, and much more!







Wacker Plates - Compaction				
Code	T21	Width	Per Day	Per Week
31/02	Compactor Plate Petrol	300 mm	£20.00	£35.00
31/02	Compactor Plate Petrol - with or without water attachment	450 mm	£20.00	£35.00
31/01	Reversible Compactor - Bomag BPR 55/65D - Diesel	750 mm	£30.00	£60.00
31/03	Upright Rammer - Petrol		£20.00	£38.00
31/04	Upright Rammer - Diesel		£25.00	£52.00
N/A	Rubber mats to suit		£5.00	£15.00

Vibrating Rollers - Compaction				Plant Specifications		
Code	T19	Per Day Self Drive	Per Week Self Drive	Weight Kg	Roller Width mm	Compaction Centrifugal Force Per Drum
24/01	Single Drum - Bomag 55E	£15.00	£40.00	151	550	10.1KN
24/17	Twin Drum - Pedestrian Controlled -Bomag BW65-S	£38.50	£120.00	626	650	24.0KN
24/02	Single Drum - Benford 171BPP	£20.00	£48.00	448	710	19.0KN
40/05	Single Drum - Roller Breaker - Benford	£25.00	£68.00	490	710	9.0KN
24/04	Twin Drum - Benford TV80H	£50.00	£120.00	1389	750	13.1KN
24/14	Trench Roller - Sheeps Foot - Ammann RW1504 Radio Controlled	£60.00	£220.00	1696	850	65.KN
24/07	Twin Drum - Dynapac CC102	£65.00	£159.00	2350	1000	21.5KN
24/09	Twin Drum - Dynapac CC122	£70.00	£176.00	2600	1200	27.0KN
24/15	Twin Drum - Dynapac CC142	£85.00	£240.00	4400	1300	32.1KN
24/15	Twin Drum - Bomag 135AD**	£85.00	£240.00	3670	1300	37.0KN
24/13	Pneumatic Tyred Roller - Komatsu*	£88.00	£240.00	5000	1300	N/A
24/16	Twin Drum - Benford TV1700**	£120.00	£400.00	10000	1680	94.0KN
24/18	Drum Roller - Ammann ASC110 - Smooth or Padfoot	£300.00	£695.00	13000	2200	227KN Smooth 206KN Padfoot
* NON VIBRATING   ** WITH CUTTING WHEEL						

COMPRESSORS & TOOLS



Compressor Equipment		
Code	T62	Per Week Minimum charge
28/01	Air Lance	£5.00
28/05	Extra Hose	£2.75
28/02	Breaker - CP9 Drill	£15.00
28/20	Breaker - Heavy	£15.00
28/04	Demolition Gun / Pick - FL22	£15.00
28/22	Tarmac Cutter - Clayspade	£3.00
28/12	Rammer Foot	£2.50
28/03	Air Grinder 230 mm	£25.00
28/06	Heavy Rock Drill	£25.00
28/09	Needle Gun*	£18.00
28/10	Poker Vibrator* - 2" or 3" (air poker)	£20.75
28/11	Scabbler* - Pole	£44.00
28/13	Scabbler* - Single Headed	£30.00
28/14	Scabbler* - Triple Headed	£38.50
28/15	Scabbler - Triple Headed Trolley	£90.00
28/17	Sandblasting Pot - plus grit and masks - £45.00 per day	£190.00
27/10	Inline Oiler	£10.00
Y0020	Steel sharps (each)	£2.45
*INLINE OILER RECOMMENDED		
ALL COMPRESSOR EQUIPMENT HIRED WITHOUT COMPRESSOR IS 25% EXTRA.		

Compressors			
Code	T61	Per day	Per Week
27/01	Compressor 7.5 CFM - Garage	£19.80	£49.50
60/25	Paint sprayer with Compressor	£18.00	£40.00
27/02	Compressor 85 cfm* - single tool	£40.00	£80.00
27/03	Compressor 125 cfm* - two tool	£50.00	£110.00
27/04	Compressor 260 cfm* - four tool	£60.00	£140.00
27/11	Compressor 600 cfm*	£100.00	£290.00
*SUPPLIED WITH ONE HOSE AND HEAVY BREAKER			







**Coppard Concrete Services** run a fleet of 7 batch mix concrete lorries which gives the flexibility to deliver from a single cubic metre to 200 cubic metres a day.

This is a unique batch system where concrete is mixed to order. Materials are carried on the truck and batches are mixed as required.

At anytime during production, the operator can shut off the mixer and modify the mix design.

- There is no waste as precise quantities are mixed to order
- No costly return of excess material
- No part load charges
- No running out of concrete as more can be mixed as required
- DIY mixes can easily be supplied in quantities ranging from 0.5m<sup>2</sup> to 10m<sup>2</sup> plus
- Mixes available C5 to C50
- Large Quantities available price on application
- Prices may vary depending on location
- Ex-works from our yard £80.00 per m<sup>3</sup>. (The price is subject to change)
- Night work and weekend work can be undertaken economically by arrangement.

Waiting time allowance is 10 minutes per cubic metre up to 1 Hour thereafter £70.00 per hour is charged.  
The price is subject to change.

**Tel:** 01892 662777      **Mob:** 07789 372352

Delivery or collection can be made by arrangement outside normal working hours

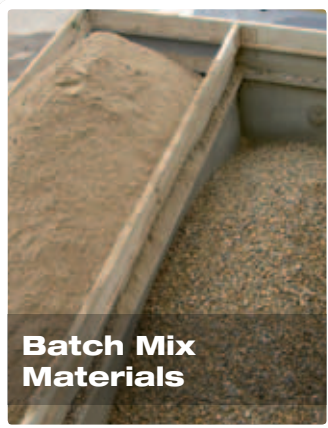
Concrete Preparation & Finishing Equipment			
Code	T71	Per Day	Per Week
30/19	Large Re-Bar tying tool - 0.8 mm Re-Bar wire £3.96 per cartridge, charged extra	£25.00	£75.00
30/01	Concrete Skip - 500 Litre	£35.00	£105.00
30/15	Plastic mortar skips - 250 Litre	N/A	£7.50
30/13	Concrete Pump - Towable - per day price includes operator - hired only with operator	£325.00	£1525.00
30/02	Concrete Test Cube - minimum 2 week hire	N/A	£3.50
30/03	Easy float - including 3 handles	£15.00	£25.00
30/03B	Big Blue Easy Float - including 3 handles	£15.00	£25.00
30/03BF	Brush Float - including 3 handles	£15.00	£25.00
30/08	Mechanical Poker - up to 3" - Petrol	£18.00	£50.00
30/21	Power Float - Ride On - Fastverdini	£58.00	£185.00
30/04	Power Float - Wear on trowels charged extra	£35.00	£100.00
30/04P	Power Float Pan	£2.00	£6.00
30/11	Slump Cone - min hire 2 weeks	N/A	£3.50
30/05	Tamp - Razor Back - 125cfm compressor required for 6m length plus £5.00 per m over 6m	£27.00	£77.00
30/16	Vibrating Tamp - Single Beam - Attachments 4ft.6ft.8ft.10ft.12ft14ft16ft Beam	£20.00	£41.00
30/17	Vibrating Tamp - Single 6.0 m Beam	£30.00	£62.00
30/12	Vibrating Tamp - Twin 5.5 m Beams	£22.00	£45.00
30/18	Roller Striker - Sectional 2.1m, 3.1m, 4.1m, 5.1m, 6.1m, 7.1m C/W Hydraulic Power Pack	£86.50	£430.00



We are proud to offer you a complete concreting service using our own high quality concreting equipment. Using one supplier of concrete, equipment and labour means any change in requirements can be resolved quickly and easily. We run a fleet of 7 batch mix concrete lorries and have a variety of concrete pumping solutions and different types of concrete finishing equipment.

- Batch Mix Concrete Suppliers
- 1 to 200 cubic metres per day
- Concrete Pumping
- Power-floating
- Tamping
- Roller Striker
- Skip Float
- Screed Rail
- Cube Testing
- Order Line 24 - 7

Concrete Mixers				
Code	T70	Per day	Per Week	Power Supply
29/02	4/3 Concrete Mixer	£15.00	£20.00	240v or 110v
29/01	4/3 Concrete Mixer	£20.00	£35.00	Petrol
29/03	5/3.5 Concrete Mixer	£25.00	£40.00	Diesel
29/04	5/3.5 Concrete Mixer	£25.00	£40.00	110v
29/05	7/5 Concrete Mixer	£30.00	£50.00	Diesel
29/06	Paddle Mixer - Compact*	£16.00	£40.00	110v
29/07	Paddle Mixer - Pan	£50.00	£110.00	Diesel
* Suitable for plastering				



The Roller Striker

The Roller Striker levels and finishes concrete slabs easily. A spinning tube pulls up the surcharge of concrete as it works. The Spinning roller action leaves aggregate near the surface resulting in a very strong floor, ready for power-floating or tamping as required.

- Simple operation.
- Ideal for ground floor slabs, suspended floors, especially slopes and cross falls.
- Easy to set up (Just fit the drive and connect to the power pack).
- Hydraulically driven
- Highly manoeuvrable for difficult applications.
- Quick to clean (the smooth tube just need hosing down)
- Comes in lengths of: 2.1m | 3.1m | 4.1m | 5.1m | 6.1m | 7.1m



Brush Finish



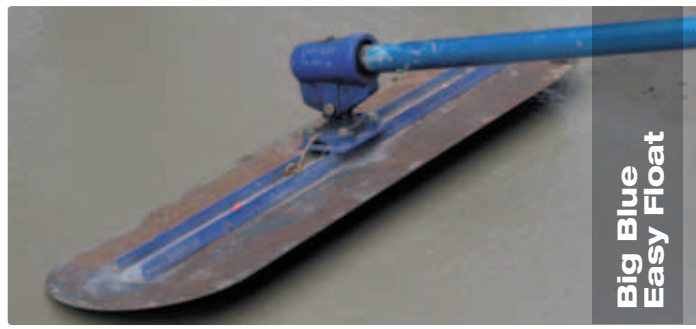
Power-Floating

Save time and increase productivity with the cordless Re-Bar-Tying tool.

- Simple one handed operation.
- Tying time twist and cut is less than 1 second.
- Works on Re-bar from 10 mm to 39 mm.
- Road and bridge construction.
- 2 batteries, charger, holster.
- Moulded case included.
- Precast concrete products.
- Building foundations.
- Wall and floors.
- Swimming pool walls.
- Any steel fixing.



Re-Bar-Tier Tool



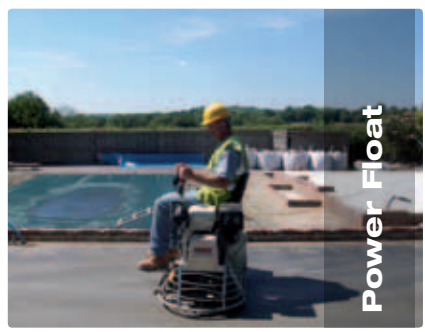
Big Blue Easy Float



Concrete Pump



Re-Bar-Tier



Power Float



Kelly Blocks





Crawler Cranes - Pick and Carry Cranes - Tower Cranes					Plant Specifications				
Code	T37	Per day Self Drive	Per Week Self Drive	Max load Tonnes	Machine Weight KG	Max Working Height M	Reach m	Height mm	Width mm
11/22	Glasboy GK500 with Counterweights	£100.00	£250.00	0.5					
11/21	Superlift SLK25 with Counterweights	£100.00	£250.00	0.5	332	7.94			
66/06	Valla 20E mobile battery operated crane	£200.00	£600.00	2.0	1950	4.50	2.70	1690	950
66/07	Maeda MC 104 Spider Crane - RT* - NA* - Petrol - LPG	£200.00	£600.00	0.995	1050	5.50	8.80	1380	600
66/08	Unic URW 094C Spider Crane - RT* - NA* - Petrol - LPG	£200.00	£600.00	0.995	1000	5.60	5.6	1380	600
66/08	Unic URW 095 Spider Crane - RT* - NA* - Petrol - LPG - RCU*	£200.00	£800.00	0.995	1850	5.50	8.41	1380	600
66/02	Maeda MC 285 Spider Crane - RT* - NA* - Diesel - Electric	£200.00	£800.00	2.82	1950	8.70	8.205	2715	750
66/02	Unic 295 Spider Crane - RT* - NA* - Petrol - LPG - RCU*	£200.00	£800.00	2.9	1850	8.65	8.80	1380	600
66/04	Unic 376 Spider Crane - RT* - NA* - Diesel	£300.00	£900.00	2.9	4000	14.61	14.45	1450	1300
66/03	Unic 506C Spider Crane - RT* - NA* - Diesel or Electric - RCU*	£400.00	£1200.00	3.0	4990	15.71	15.50	2035	1380
66/05	Unic 706 Spider Crane - RT* - NA* - Diesel or Electric - RCU*	£500.00	£1400.00	6.0	8070	19.20	19.50 or 22.0**	2185	1600
66/09	Terex Crane - Self Erecting Tower Crane***	N/A	£800.00	4.0	10000	27.20	32	21.6m	2300
RCU* = WIRELESS REMOTE CONTROL UNIT - RT* = RUBBER TRACKS - NA* = NARROW ACCESS - 22.0** = WITH FLY GIB									
LORRY MOUNTED CRANES ARE ALSO AVAILABLE SEE LORRIES - *** MIN 4 WEEK HIRE + SETUP CHARGE									



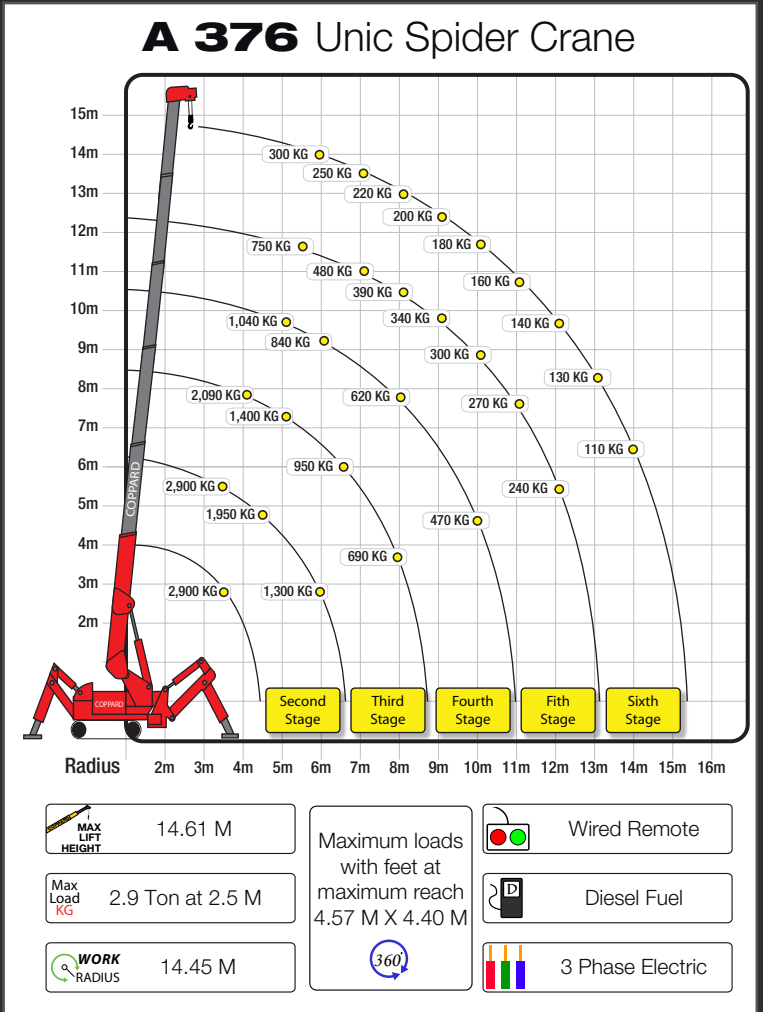
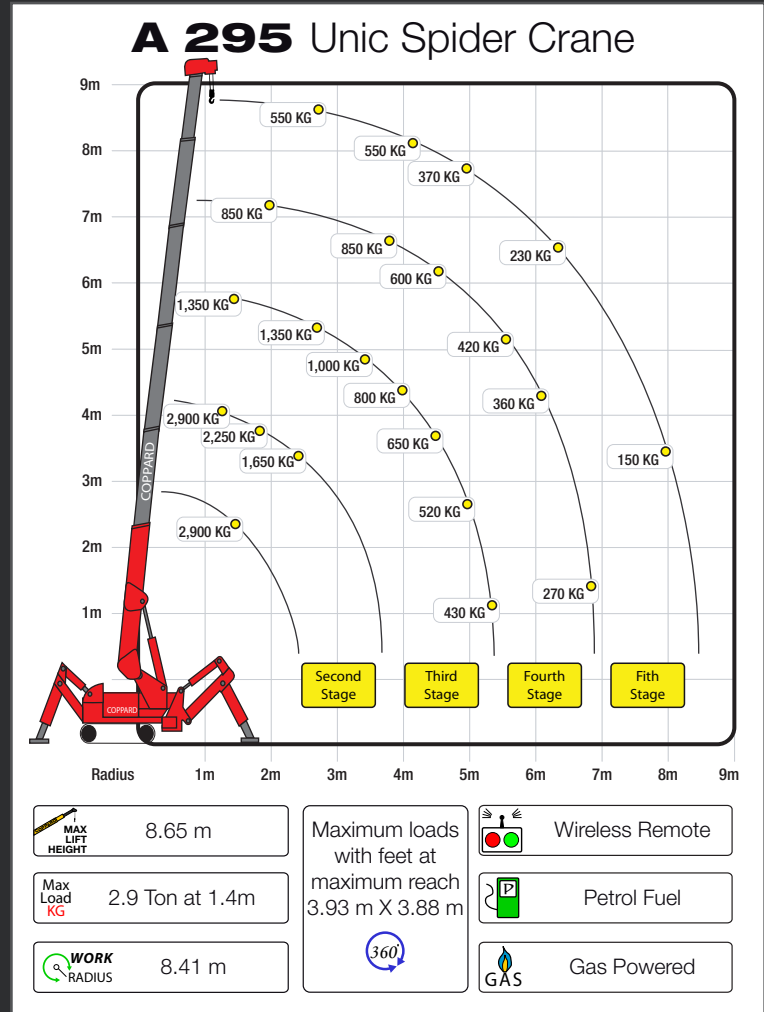
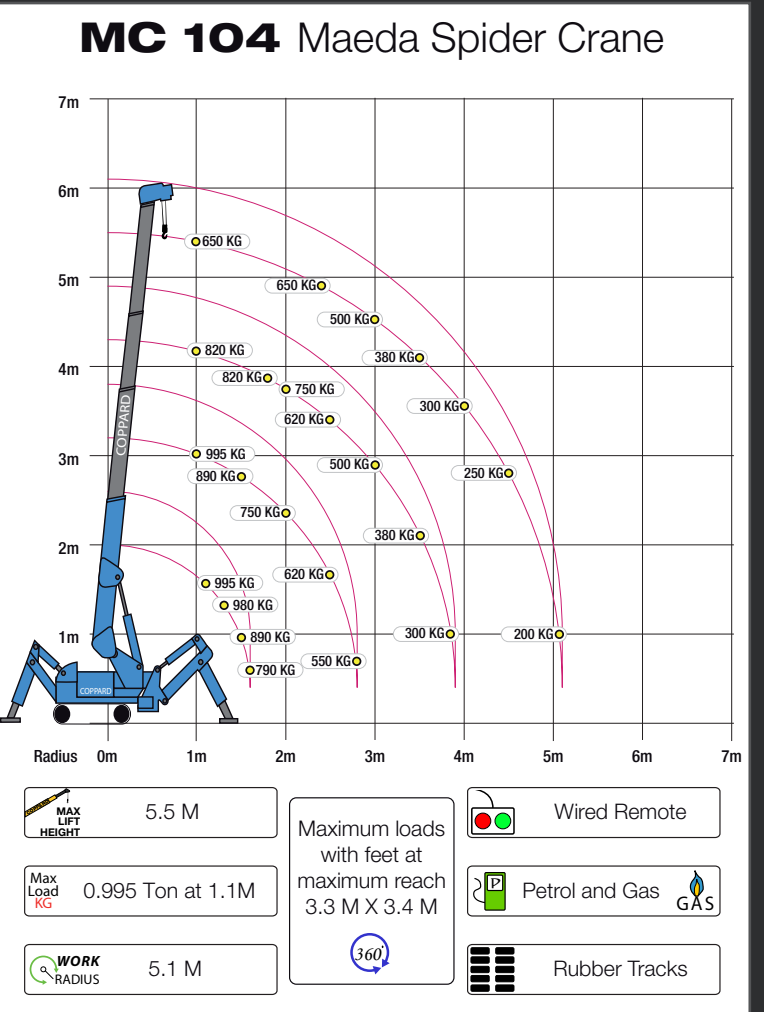
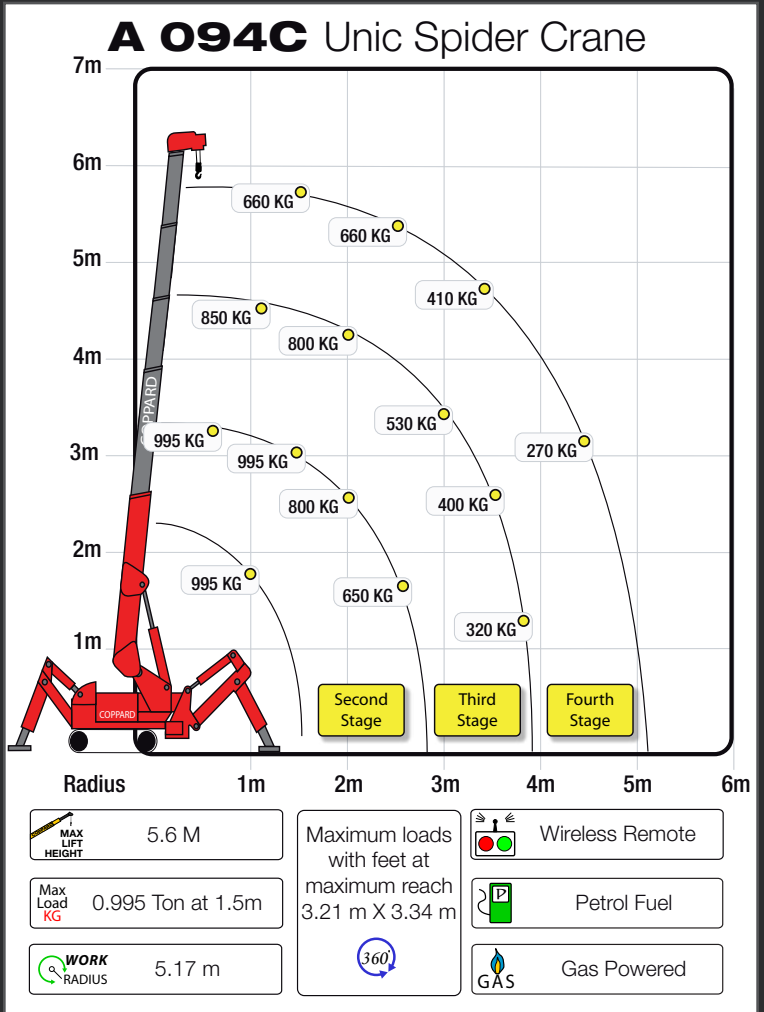
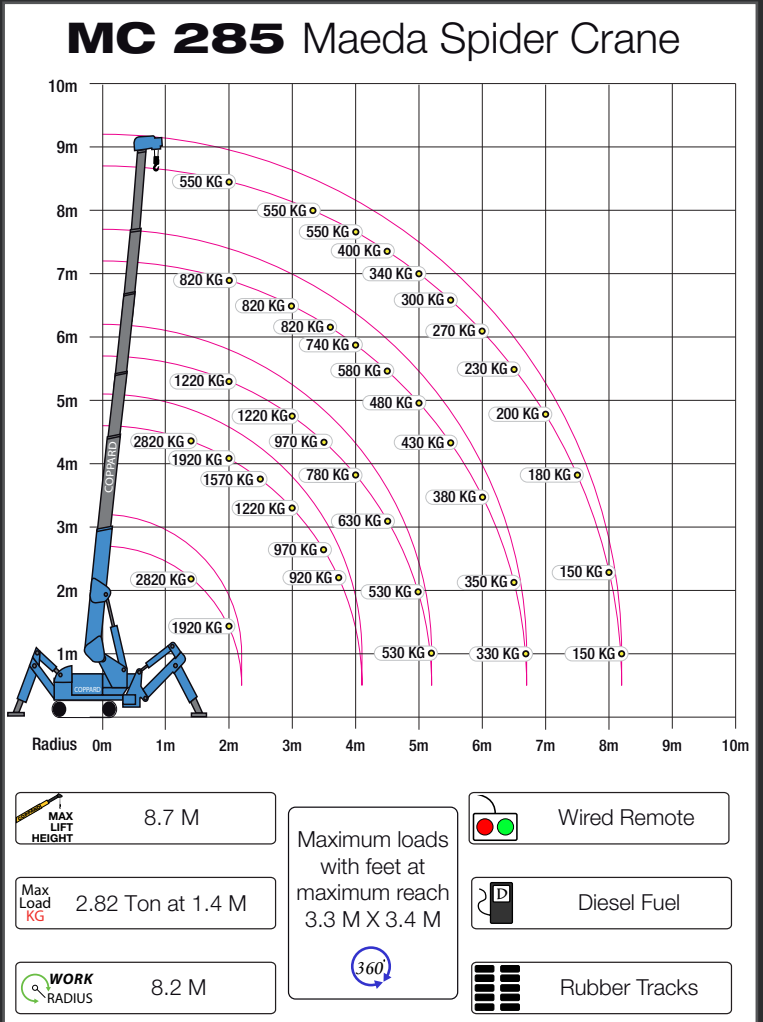
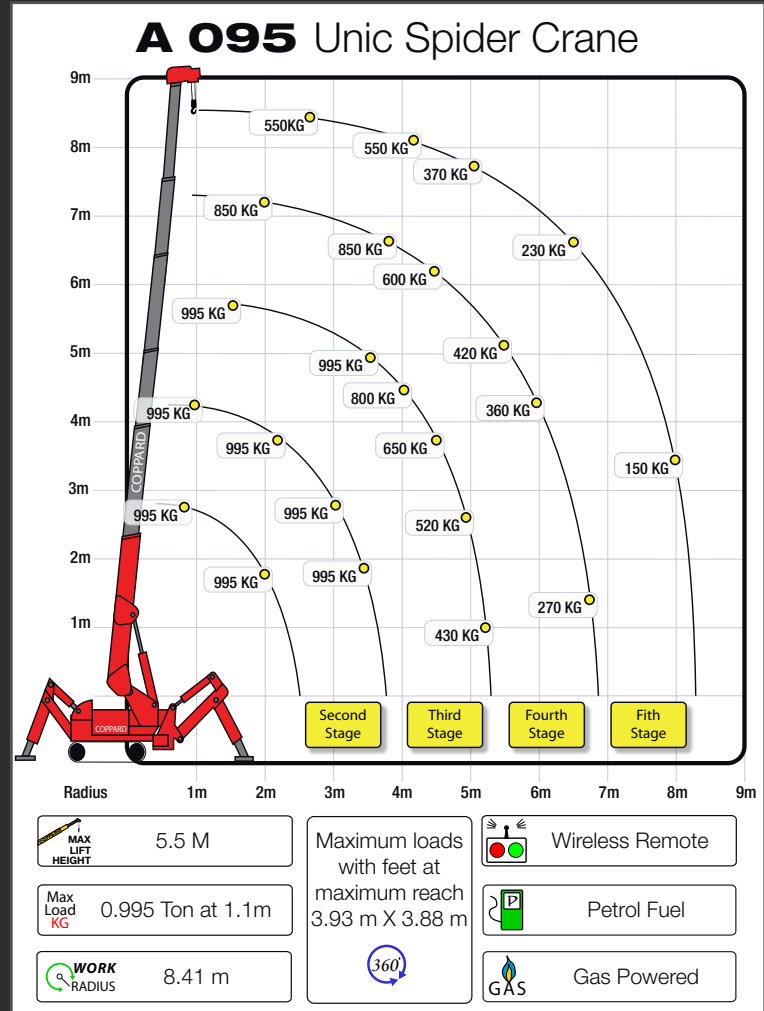
Glass Lifters - Crane Attachments				Plant Specifications		
Code	T37b	Per Day	Per Week	Max Lift KG	Rotation Degree	Tilt/ Degree
66A/01	Woods Glass Lifter - P11104 '4-in-line' - Dual Circuit + Storage Box	POA	POA	320	180 deg	90 deg
66A/02	Woods Glass Lifter - MRT4 - Dual Circuit + Storage Box	POA	POA	320	360 deg	90 deg
66A/03	Woods Glass Lifter - MRTA6 - Dual Circuit - Quadra Tilt	POA	POA	500	360 deg	
66A/04	Pannkoke Glass Lifter - 7211-DS2 - Dual Circuit	POA	POA	600		
66A/05	Hydraulica Glass Lifter - MR1611LDC - Manual Rotator 2800 - DC Powered	POA	POA	1270	360 deg	
66A/08	Hydraulica Glass Lifter - Dual Circuit	POA	POA	1000	270 deg-360 deg	90 deg
66A/06	Geko Glazing Robot Trolley Glass Lifter C/W Mullion Type Vacuum Lifter	POA	POA	250		
66A/11	Cladboy + 8 stage frame extension and transport box - panels length to 18m	N/A	POA	250		
	Slimline DSZ2 Dual Circuit Glass lifter	POA	POA	750	360 deg	90 deg
66A/07	Glass Trolley Stilage 2.0m x 1.4m x 1.9m High	£48.00	£100.00	250		
POA = PRICE ON APPLICATION						





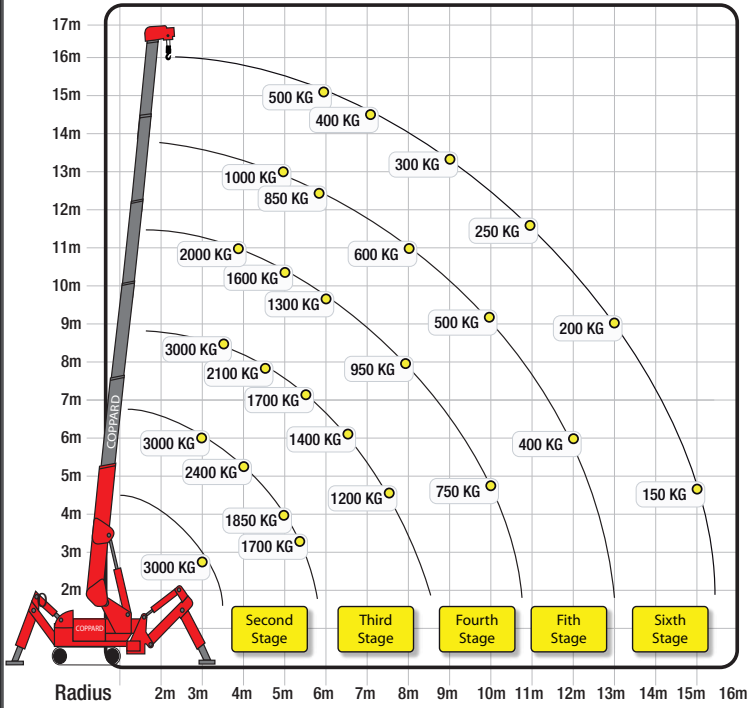
# CRANE LOADING CHARTS

Crane Attachments				Plant Specifications			
Code	T37A		Per day Self Drive	Per Week Self Drive	Max load Tonnes	Operating Range mm	Capacity Litre
18/01	Brick Grab	Manual	£28.00	£140.00	1.8	600 to 1150	
18/01	Strong Arm Drum Mover 205 Litre		£28.00	£140.00			
18/02	Crane Forks		£28.00	£140.00	2.0		
18/03	Pipe Lifter		£28.00	£140.00	1.0		
18/04	Hydraulic Brick Grab with Swivel		£40.00	£200.00	1.0		
18/05	Kerb Lifter – 500 KG		£15.00	£38.00	0.5	10 to 560	
18/06	Vacuum Slab Lifter + Attachments*		£45.00	£225.00	0.4		
60A/10	Muck Skip		N/A	£45.00	200		
30/01	Concrete Skip		£35.00	£105.00	500		
* 1: Slab(SM10S) 2. KERB (SM10K) 3. Ribbed Slab(SM10R)							





A 506 Unic Spider Crane



15.71 M

3.0 at 3.4 M

15.52 M

Maximum loads with feet at maximum reach 6.00 M X 6.00 M

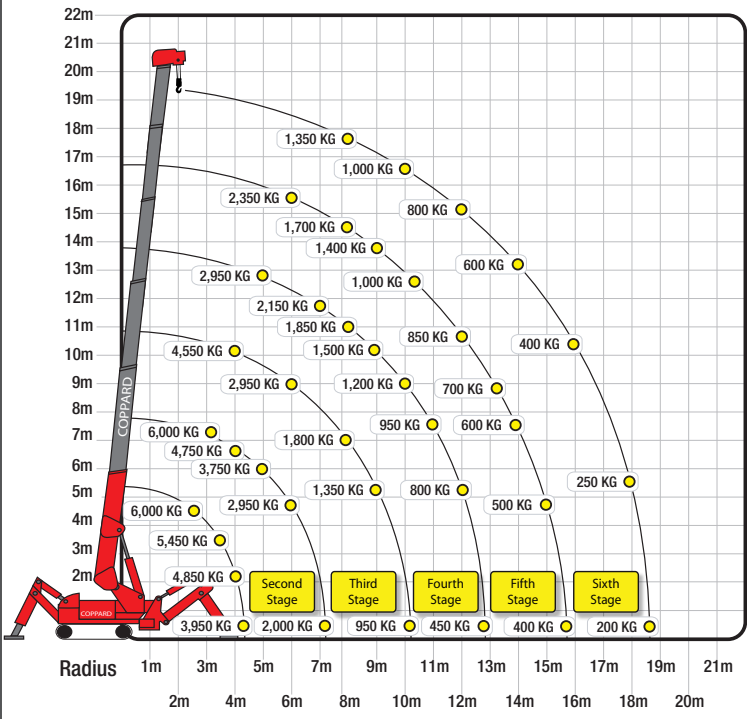
360°

Wireless Remote

Diesel Fuel

3 Phase Electric

A 706 Unic Spider Crane



19.2 M

6.0 Ton at 3.0 M

18.6 M

Maximum loads with feet at maximum reach 6.55 M X 6.46 M

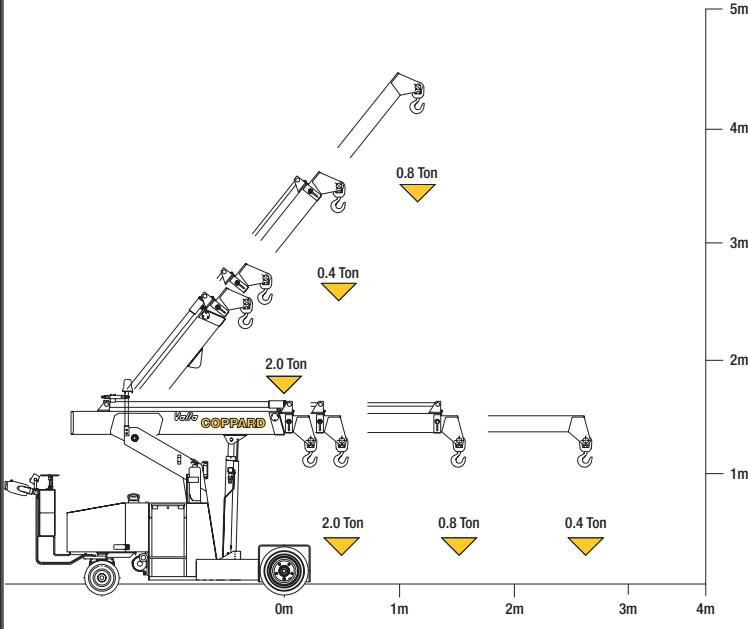
360°

Wireless Remote

Diesel Fuel

3 Phase Electric

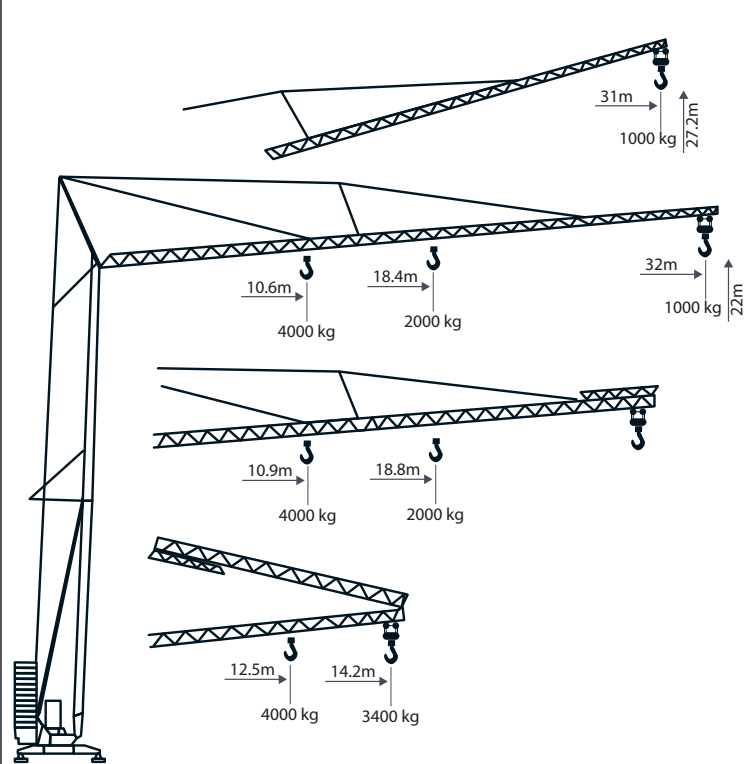
Valla 20E Pick and Carry Crane



4.5 M

2.0 Ton at 0.5KG

CBR 32H-4 Comedil Terex



Dozers

Code	T8	Per day	Per Week	Width mm	Weight Tonnes
10/01	Mitsubishi Dozer-6 Way Blade-Metal Tracks / Rubber Pads	£98.00	£490.00	2200	5.0



DRAINAGE EQUIPMENT

Drainage Equipment

Code	T69	Per Week	Code	Per Day	Per Week
60/05	Boning Rods - Set of 3*	£10.00	53/22	Duct Rod - 200 metres	£15.00 £60.00
69/01	Breathing Apparatus*	£55.00	53/07	Ductile Iron Cutter	£11.00 £27.00
53/16	Davey Lamps*	£12.00	53/21	Duct Rod - 100 metres	£10.00 £40.00
53/01	Drain Plugs up to 4"	£10.00	53/08	Pipe Cutter - Hepsleve	* £10.00
53/02	Drain Plugs up to 9"	£11.00	34/04	Drain Jetter on trailer - Diesel	£60.00 £250.00
53/03	Drain Plugs over 9"	£13.00	60/02	Copper Pipe Bender 15-22mm	* £10.00
53/04	Drain Plugs over 15"	£16.50	53/09	Pipe Stilsons	* £10.00
53/05	Drain Rodding - 10 Rods*	£11.00	53/10	Plumbers Vice	* £14.00
53/06	Drain Tester U-bend*	£10.00	53/11	Pipe Threader - Manual	* £22.00
55/04	Gas Monitor*	£48.00	53/12	Pipe Threader - 110v or 240v	£40.00 £85.00
60/16	Gulley Scoop*	£10.00	53/20	Manlift 'A' Frame**	* £18.00

\* MINIMUM HIRE 1 WEEK - \*\* COMES WITH HARNESS



DRILLS

Drills

Code	T56	Per Day	Per Week	Power Supply
42A	Diamond Core Drill - Various core sizes available up to 150 mm	£18.00	£65.00	110v & 240v
42/08	Right Angle Drill 3/8"	£15.00	£30.00	240v
42/15	Battery Drill 3/8" and Charger	£15.00	£25.00	240v
42/04	Hammer Drill 1/2" - Percussion - 2 speed	£15.00	£25.00	110v & 240v
42/05	Hammer Drill 1/2" - 2 Speed	£15.00	£25.00	110v
42/06	Magnetic Drill - Rotabroach	£25.00	£65.00	110v & 240v
42/11	Hammer Drill - SDS	£15.00	£25.00	110
41/04	Hammer Drill - SDS Max	£15.00	£35.00	110
42/12	Drill 3/4" - Percussion	£18.00	£65.00	2 stroke
42/13	Hex Driver (used with self drilling screws)	£15.00	£25.00	110
42/14	Impact Wrench 1/2" Drive - Makita - Cordless	£15.00	£35.00	24v

A WIDE RANGE OF DRILL BITS AVAILABLE | DRILL BITS CHARGED EXTRA | WEAR ON DIAMOND CORE FROM £12.00 PER MM



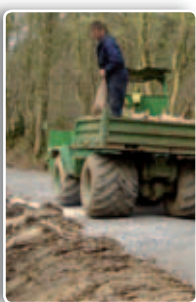




Dumpers - Hydraulic Tip				Specifications	
Code	T11	Per Day Self Drive	Per Week Self Drive	Width mm	Drive Type HS*/ Man*
20/03	2 Tonne - 4 wheel drive	£45.00	£120.00	1860	Man
20/05	3 Tonne - 4 wheel drive	£55.00	£160.00	1950	HS & Man
20/06	4 Tonne - 4 wheel drive	£65.00	£195.00	2170	HS
20/07	6 Tonne - 4 wheel drive	£88.00	£247.00	2350	HS
20/09	9 Tonne - 4 wheel drive	£120.00	£460.00	2500	HS
20/08	10 Tonne - 4 wheel drive - Rear Discharge	£132.00	£495.00	2170	HS
20/10	30 Tonne - 6 Wheeler - Rear Discharge	£200.00	£800.00	2900	HS
DRIVE TYPE   HS = HYDRO STATIC   M = MANUAL					



Dumpers - Power Swivel		Hire / Rental		Plant Specifications	
Code	T13	Per Day Self Drive	Per Week Self Drive	Max Width mm	Drive Type HS*/ Man*
21/05	1.0 Tonne - 4 Wheel Drive - Narrow Access	£70.00	£180.00	1200	HS
21/07	1.5 Tonne - 4 Wheel Drive	£75.00	£200.00	1467	Man
21/01	2.0 Tonne - 4 Wheel Drive	£55.00	£160.00	1860	Man / HS
21/02	3.0 Tonne - 4 Wheel Drive	£65.00	£195.00	1950	Man / HS
21/04	3.5 Tonne - 4 Wheel Drive	£72.00	£220.00	1950	HS
21/03	5.0 Tonne - 4 Wheel Drive	£88.00	£247.00	2200	HS
21/06	6.0 Tonne - 4 Wheel Drive	£90.00	£275.00	2350	HS
DRIVE TYPE   HS = HYDRO STATIC   M = MANUAL					



## LOW GROUND PRESSURE

Dumpers - Low Ground Pressure				Specifications	
Code	T12	Per Day Self Drive	Per Week Self Drive	Width mm	Drive Type HS*/ Man*
20/12	3 Tonne 4 Wheel Drive	£65.00	£195.00	2150	HS
DRIVE TYPE   HS = HYDRO STATIC   M = MANUAL					



## POWER SWIVEL - TRACKED

Dumpers - Power Swivel - Tracked				Plant Specifications		
Code	T13.1	Per Day Self Drive	Per Week Self Drive	Size	Max Width mm	Drive Type HS*/ Man*
23S/07	Ausa S25	£110.00	£500.00	2.5 Tonne	1560	HS
23S/08	Hitachi EG40R	£150.00	£600.00	4.0 Tonne	2210	HS
23S/05	Komatsu CD60R	£175.00	£700.00	6.0 Tonne	2420	HS
23S/06	Komatsu CD110R	£600.00	£1250.00	15.0 Tonne	3330	HS
DRIVE TYPE   HS = HYDRO STATIC   M = MANUAL						



# DUMPERS - HIGH DISCHARGE

Dumpers - High Discharge - Narrow Access				Specifications		
Code	T14	Per Day	Per Week	Load Tonne	Max Width mm	Drive Type HS*/ Man*
22/03	Skip loader - Rubber Track Barrow - Petrol	£35.00	£130.00	0.75	730	HS
22/04	Skip loader - Rubber Track Barrow - Petrol	£35.00	£130.00	0.75	730	HS
22/05	Skip loader - Rubber Track Ride On - Diesel	£45.00	£155.00	1.00	750	HS
22/02	Skip Loader - 4 wheel drive	£60.00	£180.00	1.25	1200	HS
DRIVE TYPE   HS = HYDRO STATIC   M = MANUAL						

# LOW GROUND PRESSURE

Dumpers - Rubber Tracked		Hire / Rental		Plant Specifications		
Code	T15	Per Day Self Drive	Per Week Self Drive	Load Tonne	Max Width mm	Drive Type HS*/ Man*
23/01	Barrow - Pedestrian Controlled - Honda	£25.00	£105.00	0.5	720	HS
23R/01	Barrow - High Lift - Ride on - Hinowa	£35.00	£130.00	0.75	730	HS
22/05	Barrow - High Lift - Tracked	£45.00	£155.00	1.0	750	HS
23R/06	Yanmar C12R - three way tip	£65.00	£250.00	1.2	960	HS
23R/03	Hitachi EG20	£70.00	£300.00	2.0	1450	HS
23S/07	Ausa S25 - Swivel tip	£110.00	£500.00	2.5	1560	HS
23S/08	Hitachi EG40R - Swivel Tip	£150.00	£600.00	4.0	2210	HS
23S/05	Komatsu CD60R - Swivel Tip	£175.00	£700.00	6.0	2420	HS
23S/06	Komatsu CD110R - Swivel Tip	£600.00	£1250.00	15.0	3330	HS
ALL OF THE ABOVE ON RUBBER TRACKS OR RUBBER PADS - DRIVE TYPE   HS = HYDRO STATIC   M = MANUAL						



# DUMPERS - TRACKED WITH CRANES



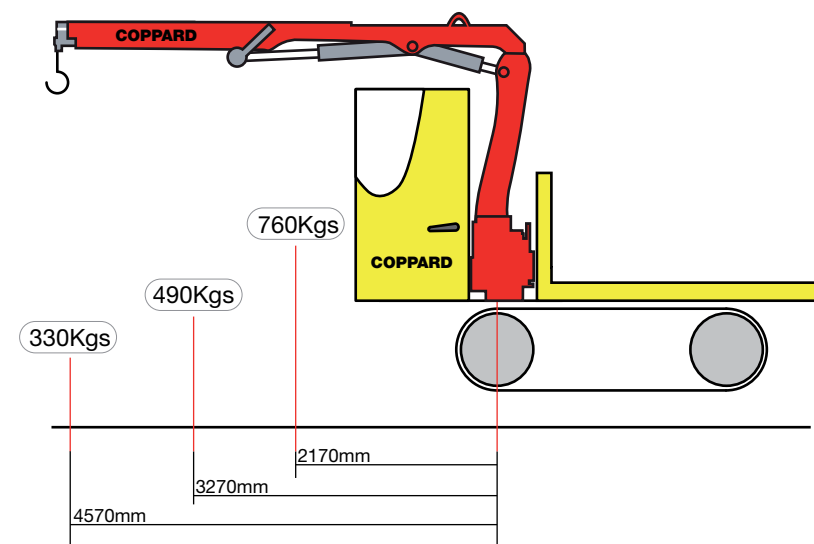
Tracked Dumpers with Cranes		Hire / Rental		Plant Specifications		
Code	T15.02	Per Day Self Drive	Per Week Self Drive	Tonne	Max Width mm	Drive Type HS*/ Man*
23C/01	DT53 Kubota RC23PI C/W Amco crane*	£200.00	£500.00	2.5	1900	MAN
23C/02	DT30 Morooka MST1000 C/W Hiab crane**	£250.00	£650.00	10.0	2600	HS
23C/05	DT46 Morooka MST2200 C/W Amco crane**	£300.00	£750.00	22.0	2750	HS
*ON METAL TRACKS - ** ON RUBBER TRACKS - DRIVE TYPE: HS = HYDRO STATIC, M = MANUAL						





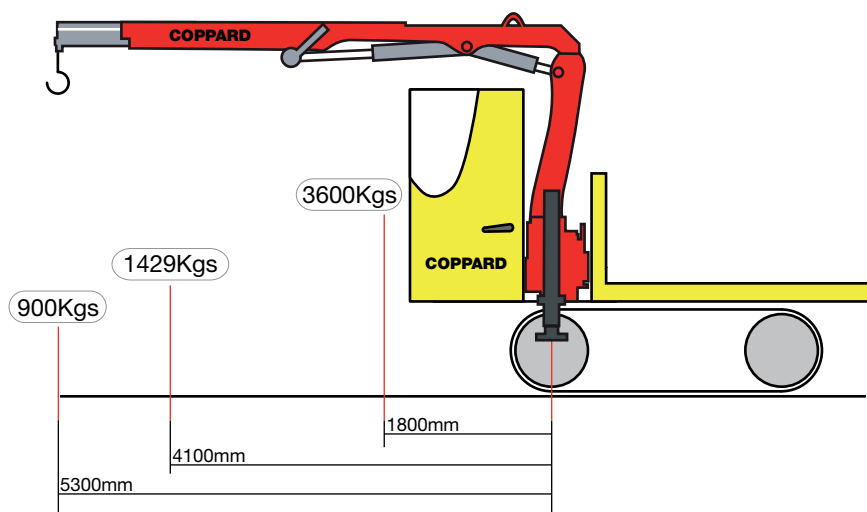
**DT53**  
Kubota RC23PL  
C/W Amco V715/15 Crane  
Width: 1800mm  
Length: 3300mm  
Height: 2300mm  
Max Lift 1600kgs @ 1000mm  
Tracked dumper on steel tracks

The crane is mounted 2000mm from the rear of the machine.



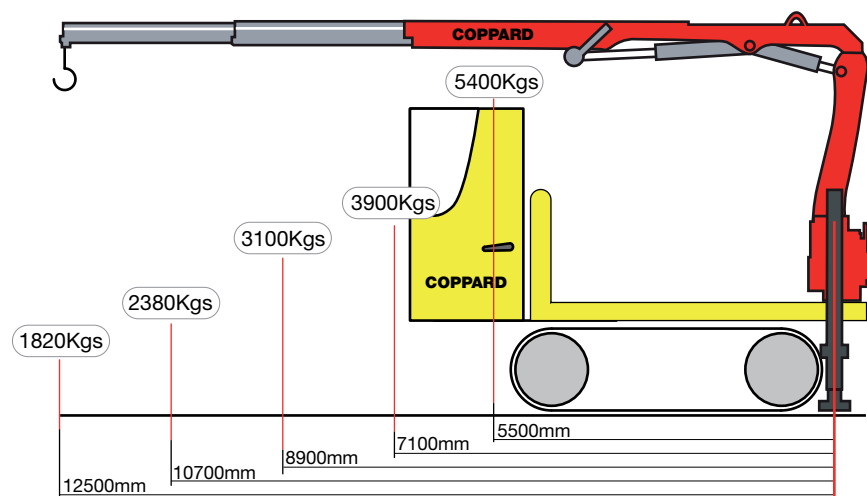
**DT30**  
Morooka MST 1000  
C/W Hiab 071A Crane  
Width: 2600mm  
Length: 5650mm  
Height: 3100mm  
Max Lift 7500kgs @ 1000mm  
Tracked dumper on rubber tracks

The crane is mounted 3800mm from the rear of the machine.



**DT46**  
Morooka MST 2200  
C/W Amco VR30 Crane  
Width: 2750mm  
Length: 7000mm  
Height: 3700mm  
Max Lift 31000kgs @ 1000mm  
Tracked dumper on rubber tracks

The crane centre post distance from the back 500mm



Utility Vehicles		Hire / Rental		Plant Specifications		
Code	T15.01	Per day Self Drive	Per Week Self Drive	Payload Kg	Max Width mm	Drive Type HS*/ Man*
74/01	Kubota RTV 900	£60.00	£220.00	790	1520	HS
74/02	Kubota RTV 1100	£60.00	£220.00	740	1688	HS
74/05	Kubota RTV 1100 - Allman Sprayer 400L with hand lance	£100.00	£420.00	N/A	4600	HS
THE ABOVE ARE ON RUBBER TYRES						



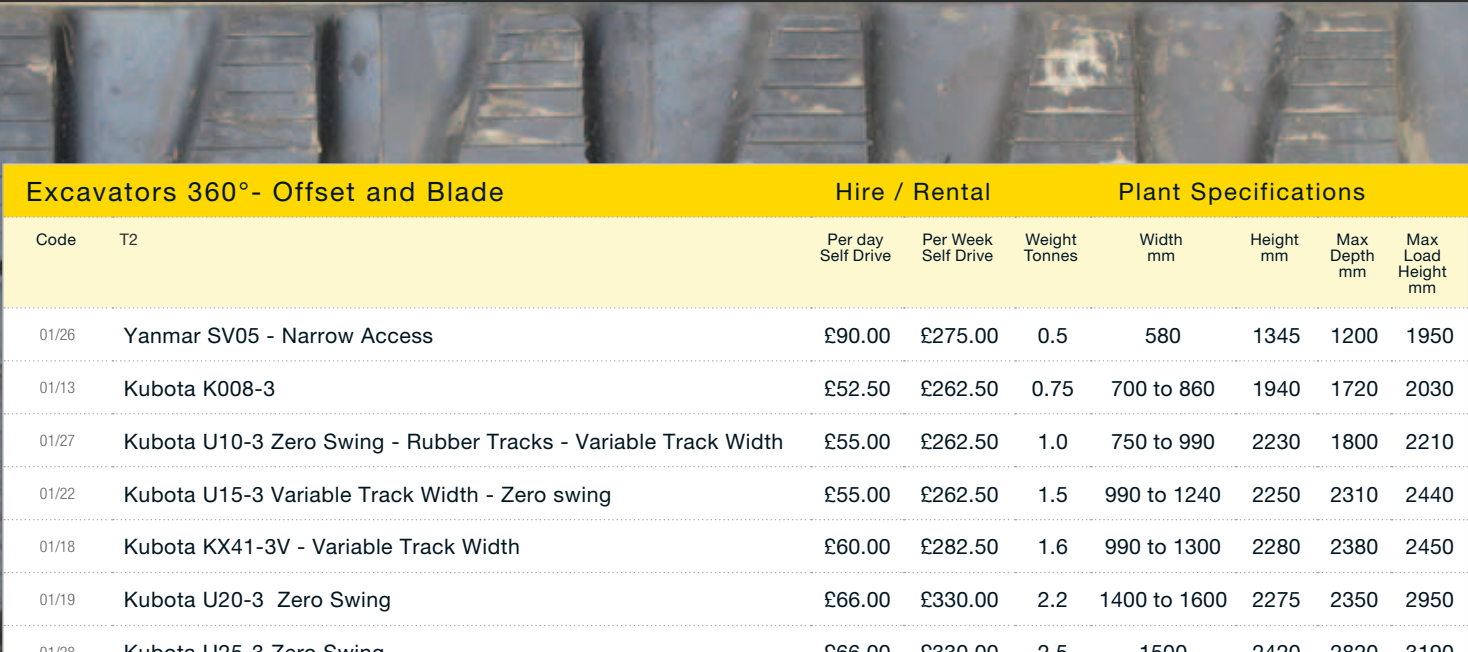
ELECTRICAL - VARIOUS

Electrical - Various			
Code	T58	Per Day	Per Week
60E/01	Extractor Fans with Ducting - 110v	£15.00	£30.00
60E/02	Extractor Fans with Ducting - 240v	£15.00	£30.00
60E/05	Vacuum Cleaner - Wet Vac - 110v	£20.00	£100.00
60E/06	Vacuum Cleaner - 240v	£16.50	£44.00
60E/07	Wallpaper Stripper	£15.00	£30.00
60E/09	Industrial Fans - 110v	£15.00	£30.00
60/50	Paint Sprayer - Airless - 110v	£25.00	£75.00





Excavators 180°				Plant Specifications				
Code	T1	Per day Self Drive	Per Week Self Drive	Weight Tonnes	Width mm	Height mm	Max Depth mm	Max Load Height mm
03/01	JCB 3CX Contractor Turbo	£100.00	£390.00	8.0	2230	2870	5630	4270 B/H - 2590 F/S
03/02	Kubota R410 Wheeled Loader with Back hoe	£70.00	£325.00	3.0	1640	2445	2750	2040 B/H - 2245 F/S
JCB 3CX IS FITTED WITH A QUICK HITCH    B/H = BACKHOE    F/S = FRONT SHOVEL								



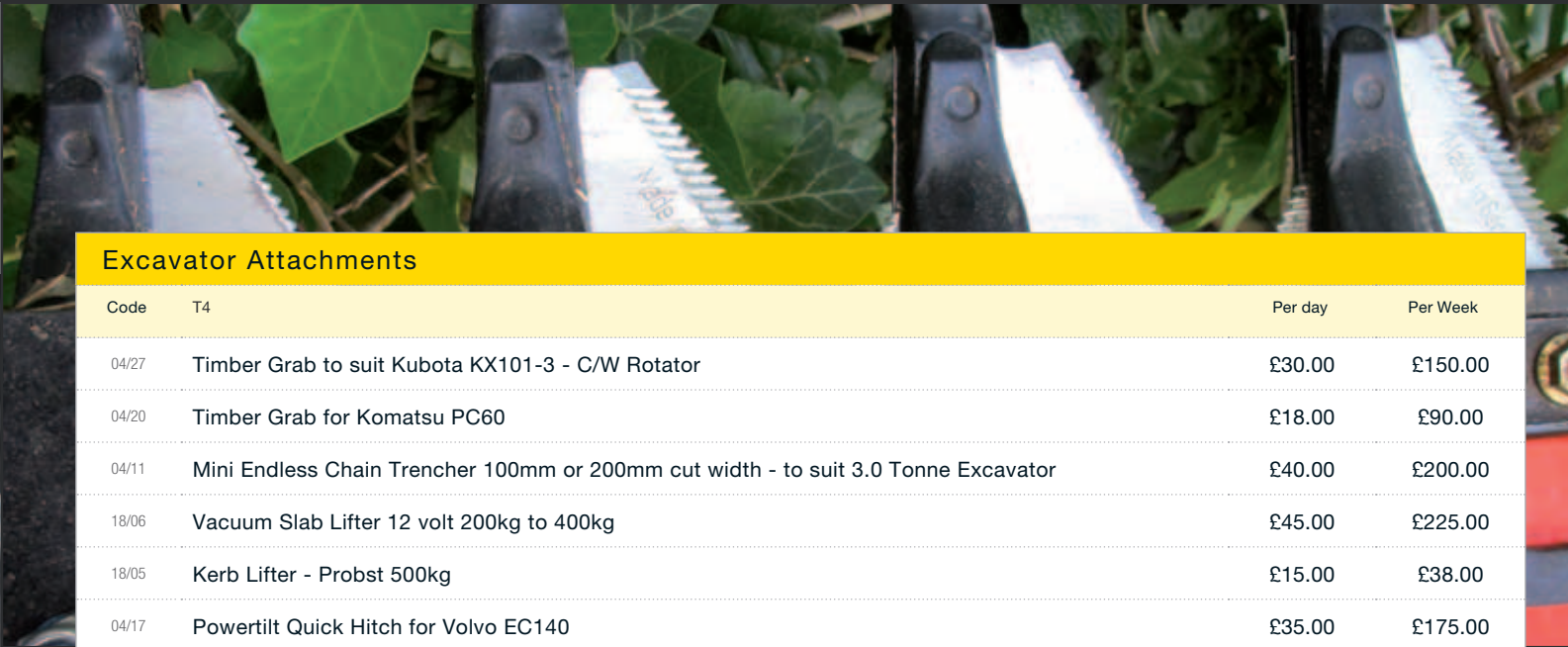
Excavators 360°- Offset and Blade		Hire / Rental		Plant Specifications				
Code	T2	Per day Self Drive	Per Week Self Drive	Weight Tonnes	Width mm	Height mm	Max Depth mm	Max Load Height mm
01/26	Yanmar SV05 - Narrow Access	£90.00	£275.00	0.5	580	1345	1200	1950
01/13	Kubota K008-3	£52.50	£262.50	0.75	700 to 860	1940	1720	2030
01/27	Kubota U10-3 Zero Swing - Rubber Tracks - Variable Track Width	£55.00	£262.50	1.0	750 to 990	2230	1800	2210
01/22	Kubota U15-3 Variable Track Width - Zero swing	£55.00	£262.50	1.5	990 to 1240	2250	2310	2440
01/18	Kubota KX41-3V - Variable Track Width	£60.00	£282.50	1.6	990 to 1300	2280	2380	2450
01/19	Kubota U20-3 Zero Swing	£66.00	£330.00	2.2	1400 to 1600	2275	2350	2950
01/28	Kubota U25-3 Zero Swing	£66.00	£330.00	2.5	1500	2420	2820	3190
01/29	Kubota KX71-3	£66.00	£330.00	2.8	1500	2410	2870	3300
01/23	Yanmar VIO30 Zero Swing Rubber Tracks	£77.00	£385.00	3.3	1550	2530	2800	3150
01/23	Yanmar VIO35 Zero Swing Rubber Tracks	£77.00	£385.00	3.5	1550	2530	3150	3420
01/06	Kubota KX101-3 Metal Tracks	£77.00	£385.00	3.5	1610	2375	3080	3185
01/07	Kubota KX101-3 - Rubber Tracks	£77.00	£385.00	3.5	1610	2375	3080	3185
01/30	Kubota U35-3 Zero Swing	£77.00	£385.00	3.5	1700	2440	3060	3040
01/11	Kubota U45-3SS Zero Swing - Rubber Tracks - Angle Blade	£88.00	£440.00	4.5	1960	2540	3400	3800
01/11	Kubota KX161-3 - Rubber Tracks	£88.00	£440.00	5.0	1840	2460	3280	3860
01/09	Hyundai R555M Metal Tracks	£88.00	£440.00	5.0	1845	2548	3820	4010
01/21	Yanmar VIO55 Zero Swing - Rubber Tracks	£88.00	£440.00	5.1	1990	2630	3800	2480
01/25	Kubota KXO80 - Metal Tracks	£110.00	£500.00	8.0	2200	2540	4600	5250
01/25	Kubota KXO80 - Rubber Tracks	£120.00	£550.00	8.0	2200	2540	4600	5250
01/25	Hitachi ZX80 - Metal tracks	£110.00	£500.00	8.0	2320	2600	4140	4850
01/15	Neuson 8003 - Rubber Tracks	£120.00	£550.00	8.0	2250	2710	4580	5030
01/20	Kobelco SK80 MSR - Zero Swing - Rubber Tracks	£120.00	£550.00	8.0	2320	2600	4380	4780
01/24	Yanmar SV100 - Zero Swing - Rubber Tracks	£130.00	£600.00	9.25	2320	2830	4400	5200
01/16	Komatsu PC 138 - Zero swing - Rubber tracks	£130.00	£600.00	12.0	2730	3010	4800	5250
ALSO AVAILABLE POST HOLE AUGERS & BREAKERS. - ALL EXCAVATORS UP TO AND INCLUDING 2.5 TONNES ARE ON RUBBER TRACKS.								
ALL EXCAVATORS IN THIS GROUP OF 1.5 TONNES PLUS ARE FITTED WITH LIFTING EYES. - ALL EXCAVATORS IN THIS GROUP ARE FITTED WITH QUICK HITCHES.								







Excavators 360°				Plant Specifications				
Code	T3	Per Day Self Drive	Per Week Self Drive	Weight Tonnes	Width mm	Height mm	Max Depth mm	Max Load Height mm
02/01	Komatsu PC60 - Without Blade	£88.00	£440.00	6.0	2200	2570	4100	4480
02/02	Hitachi EX60-5 - With Blade	£95.00	£475.00	6.0	2150	2570	4100	4480
02/10	Hitachi EX60-3 - Long Reach	£125.00	£625.00	6.0	2300	2850	9 Metre Reach	
02/06	Samsung SE130LC-2 - Metal Tracks	£120.00	£600.00	13.0	2600	2805	5510	6230
02/06	Volvo MX135 LS Tracked	£120.00	£600.00	13.0	2600	2770	5530	5980
02/06	Samsung SE130 CM-2	£120.00	£600.00	14.0	2740	3020	5300	6440
02/07	Samsung SE150 LC-2	£130.00	£650.00	15.0	2600	2960	6100	6600
02/07	Volvo EC140B	£130.00	£650.00	15.0	2690	2960	5300	7290
02/08	Komatsu PC 210LC-7K	£140.00	£700.00	21.0	3085	3015	6620	7110
02/08	Hitachi EX 200-5	£140.00	£700.00	21.0	2700	2880	6150	7200
02/11	Komatsu PC210 Long Reach	£198.00	£900.00	21.0	3080	3390	15.25 Metre Reach	
ALL EXCAVATORS IN THIS GROUP ARE FITTED WITH A QUICK HITCH								



Excavator Attachments			
Code	T4	Per day	Per Week
04/27	Timber Grab to suit Kubota KX101-3 - C/W Rotator	£30.00	£150.00
04/20	Timber Grab for Komatsu PC60	£18.00	£90.00
04/11	Mini Endless Chain Trencher 100mm or 200mm cut width - to suit 3.0 Tonne Excavator	£40.00	£200.00
18/06	Vacuum Slab Lifter 12 volt 200kg to 400kg	£45.00	£225.00
18/05	Kerb Lifter - Probst 500kg	£15.00	£38.00
04/17	Powertilt Quick Hitch for Volvo EC140	£35.00	£175.00
04/18	Hydraulic Tilting Ditching Bucket for 3.0 to 5.0 Tonne Excavator	£30.00	£150.00
04/18	Hydraulic Tilting Ditching Bucket for 13.0 Tonne Excavator	£30.00	£150.00
04/25	Grab Bucket to suit 6.0 to 8.0 Tonne Excavator	£20.00	£80.00
04/19	Vibrating Plate 600mm to suit 5.0 to 8.0 Tonne Excavator	£30.00	£150.00
04/28	Klac Claw to suit Kubota U45-3ss	£30.00	£150.00
04/21	Klac Margurite Double Capacity Digging Bucket to suit 1.5 - 2.0 - 3.0 - 5.0 Tonne Excavators Trenchers 100mm and 200mm wide	£30.00	£150.00
04/24	Concrete Nibblers to suit Kubota KX161-3	£98.00	£490.00
04/24	Concrete Nibblers to suit Hitachi EX60-5	£98.00	£490.00
04/24	Concrete Nibblers to suit Komatsu PC210-7	£98.00	£490.00
04/22	Land Clearance Rake 6 Legs for 3 Tonne Excavators	£15.00	£60.00
04/23	Land Clearance Rake 7 Legs for 5 Tonne Excavators	£20.00	£80.00
64/03	Auger drive unit for 1.5 Tonne Excavator	£38.00	£190.00
64/04	Auger drive unit for 2.0 to 4.5 Tonne Excavator	£38.00	£190.00
64/05	Auger drive unit for 5.0 to 8.0 Tonne Excavator	£45.00	£225.00
18/08	Sutbusta 240v Exhaust Filter for all Diesel Machines	Min 1 Week	£300.00
64/05	Hedge Cutter / Sythe - Suitable for 3 & 5 Tonne Machines	£50.00	£200.00
04/30	Crusher Bucket to suit 20 to 30 Tonne Machine	Min 1 Week	£800.00
ATTACHMENTS PLUS 25% IF HIRED WITHOUT EXCAVATOR			

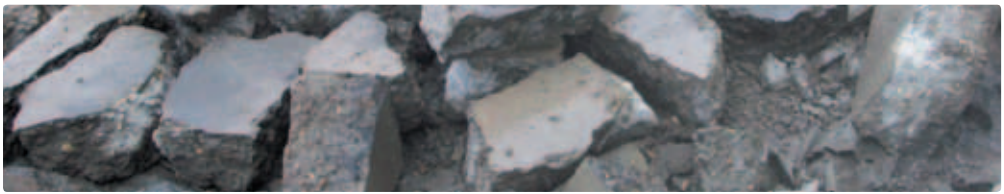






Excavator Attachments - Breakers			
Code	T5	Per day	Per Week
04/01	Breaker for 0.75 to 1.5 Tonnes Excavator	£25.00	£125.00
04/02	Breaker for 2.0 to 3.5 Tonne Excavator	£38.00	£190.00
04/03	Breaker for 5.0 Tonne Excavator	£52.00	£260.00
04/25	Breaker for 7.0 Tonne Excavator	£60.00	£300.00
04/04	Breaker for 13.0 Tonne Excavator	£75.00	£375.00
04/26	Breaker for 20.0 Tonne Excavator	£110.00	£550.00
ATTACHMENTS PLUS 25% IF HIRED WITHOUT EXCAVATOR			

Excavator Accessories				
Code	T6	Per day	Per Week	2 Week Hire
04/13	Excavator track mats 2.0 x 1.0 m - minimum hire 2 weeks	N/A	N/A	£5.50
60/47	Operator including van - up to 10 hours including travelling	£200.00	£1000.00	£2000.00



Forestry Equipment					
Code	T85	Per day	Per Week	Powered by	Width M
59/07	Shuvholer	N/A	£10.00		
59/08	Post Rammer - Hand Held	Request	£15.00		
45/01	Chainsaw Stihl 018 - 024 - See Ref: 2	£42.00	£98.00	2 Stroke	
63/19	Chainsaw Stihl Pole Pruner - 3 metre pole - See Ref:1 & Ref:2	£42.00	£98.00	2 Stroke	
63/33	Hedge Cutter - 5 Blades - Excavator Mounted + Sharps	£350.00*	Request		
64/02	Auger - Digga - 1 man 100mm to 300mm	£38.00	£115.00	Unleaded	
64/02	Auger - Stihl Mechanical - 2 man 100mm to 300mm	£38.00	£115.00	2 Stroke	
63/27	Chipper 6" - Vermeer - Towable + Sharps	£125.00	£450.00	Diesel	
63/29	Chippers 7" - Jensen A540T - Tracked + Sharps	£175.00	£630.00	Diesel	0.9 to 1.4
63/12	Chipper 9" - Vermeer - Towable + Sharps	£145.00	£550.00	Diesel	
63/12	Chipper 9" - Timber Wolf - Towable + Sharps	£145.00	£550.00	Diesel	
63/31	Stump Grinder - Vermeer SC130 + Sharps	£77.00	£385.00	Petrol	0.75
63/15	Stump Grinder - Vermeer SC252 + Sharps	£100.00	£375.00	Petrol	0.89 to 1.25
63/18	Stump Grinder - Vermeer SC352 + Sharps	£130.00	£525.00	Diesel	0.89 to 1.27
63/28	Stump Grinder - Vermeer SC60TX - Rubber Tracked + Sharps	£175.00	£650.00	Diesel	0.89 to 1.3
* PRICE INCLUDES OPERATOR - REF:1 THE FIRST DAY IS CHARGED AS ABOVE THEN £14 PER DAY AFTER THAT. - REF:2 SAFETY GEAR IS INCLUDED. ONLY AVAILABLE TO HOLDERS OF A CURRENT CERTIFICATE OF COMPETENCE. - AUGERS AVAILABLE FOR 360° EXCAVATORS, SEE PAGE 6 - CHAINSAWS AVAILABLE, SEE PAGE 25 - BOBCAT C/W FLAIL AVAILABLE SEE PAGE 16					







Gardening Equipment				
Code	T86	Per day	Per Week	Power Supply
62/28	Rotovator - 500mm	£35.00	£150.00	Petrol
62/29	Rotovator - Cannon - 700mm	£45.00	£180.00	Petrol
62/22	Rotovator - Howard Gem Professional	£45.00	£225.00	Diesel
62/29P	Harrow - Power - Cannon - 700mm	£45.00	£180.00	Petrol
62/33	Mini Tiller - Honda FG201 - Pedestrian Controlled	£45.00	£225.00	Petrol
63/02	Flame Thrower - Weed Burner	£10.00	£35.00	Paraffin
63/01	Hedge Cutter	£15.00	£30.00	Electric
63/03	Hedge Cutter	£15.00	£34.00	Petrol
63/04	Hedge Cutter - Long Reach	£22.00	£66.00	Petrol
63/14	Lawn Scarifier	£20.00	£75.00	Petrol
63/06	Mower - Honda HRX537 - Heavy Duty	£20.00	£100.00	Petrol
63/06	Mower - Hayter Condor - Rotary	£20.00	£100.00	Petrol
63/07	Mower - Wolsley Clearway - Heavy Duty	£25.00	£125.00	Petrol
63/08	Sprayer - Knapsack	£10.00	£18.00	
63/09	Strimmer - Pedestrian - Nylon	£25.00	£100.00	Petrol
63/16	Strimmer - Handheld - Nylon or Blade	£15.00	£75.00	Petrol
63/11	Turf Cutting Machine	£38.00	£120.00	Petrol
63/17	Garden Vacuum	£28.00	£75.00	Petrol
45/08	Leaf Blower	£15.50	£45.00	2 Stroke

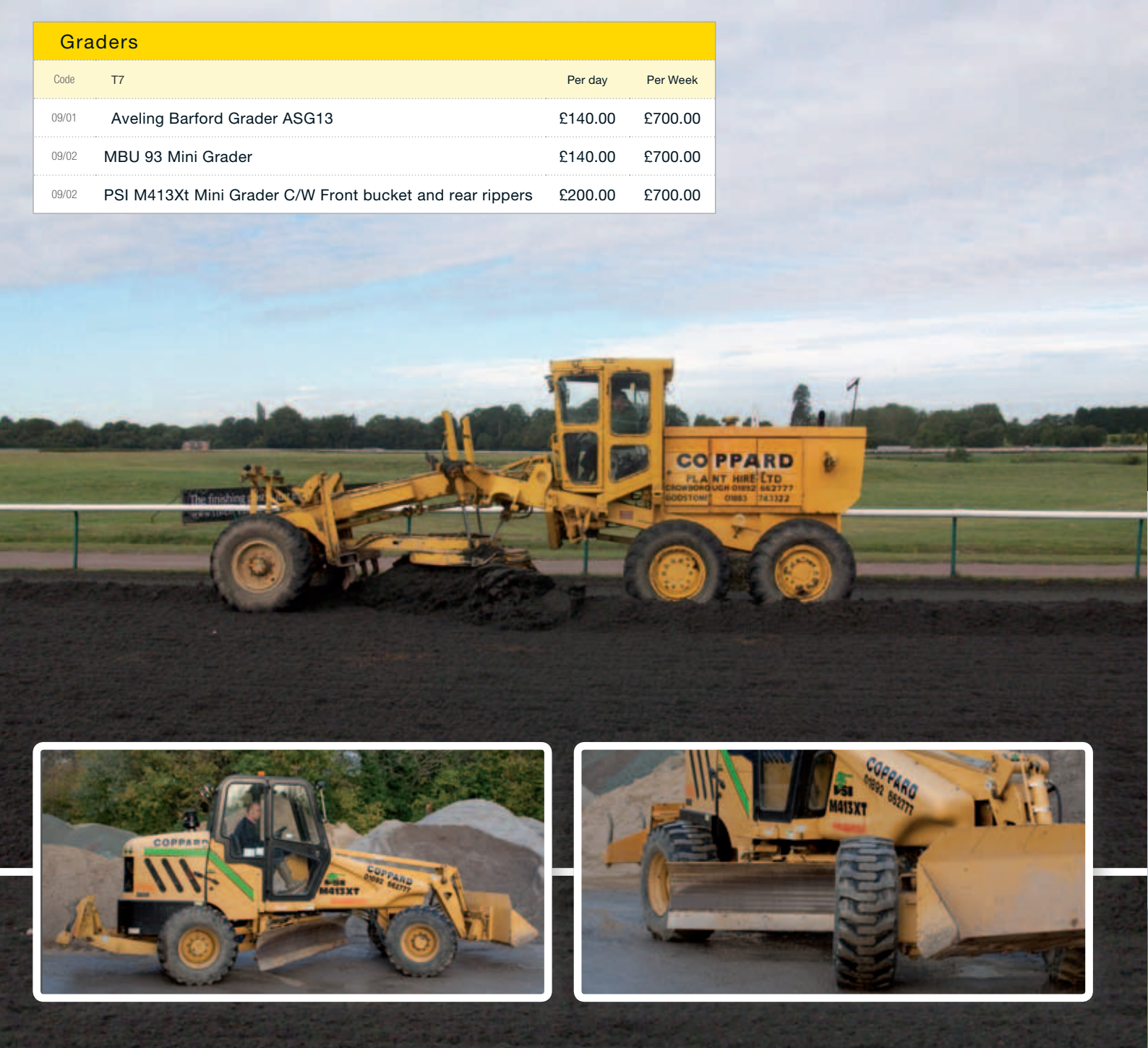


Generators - Dual Voltage			
Code	T49	Per Day	Per Week
39/01	2.5 kva Petrol generator - single phase	£15.00	£30.00
39/02	3.0 kva Petrol generator - single phase	£16.00	£33.00
39/03	4.0 kva Diesel generator - single phase	£25.00	£45.00
39/08	5.0 kva Petrol generator - single phase	£22.00	£42.00
39/11	6.0 kva Diesel generator - single phase	£28.00	£72.00
39/10	8.0 kva Diesel generator single phase	£30.00	£78.00
39/04	12.0 kva Diesel generator - single phase	£33.00	£88.00
39/07	18.0 kva Diesel generator - silent - skid mounted - three phase	£40.00	£95.00
G/20	20.0 kva Super silenced diesel generator - 415V - 3 phase	min week	£95.00
G/30	30.0 kva Super silenced diesel generator - 415V - 3 phase	min week	£130.00
G/40	40.0 kva Super silenced diesel generator - 415V - 3 phase	min week	£140.00
G/50	50.0 kva Super silenced diesel generator - 415V - 3 phase	min week	£160.00
G/60	60.0 kva Super silenced diesel generator - 415V - 3 phase	min week	£170.00
G/75	75.0 kva Super silenced diesel generator - 415V - 3 phase	min week	£180.00
G/100	100.0 kva Super silenced diesel generator - 415V - 3 phase	min week	£220.00
G/150	150.0 kva Super silenced diesel generator - 415V - 3 phase	min week	£280.00
G/200	200.0 kva Super silenced diesel generator - 415V - 3 phase	min week	£380.00
G/250	250.0 kva Super silenced diesel generator - 415V - 3 phase	min week	£440.00
G/350	350.0 kva Super silenced diesel generator - 415V - 3 phase	min week	£560.00
G/500	500.0 kva Super silenced diesel generator - 415V - 3 phase	min week	£800.00



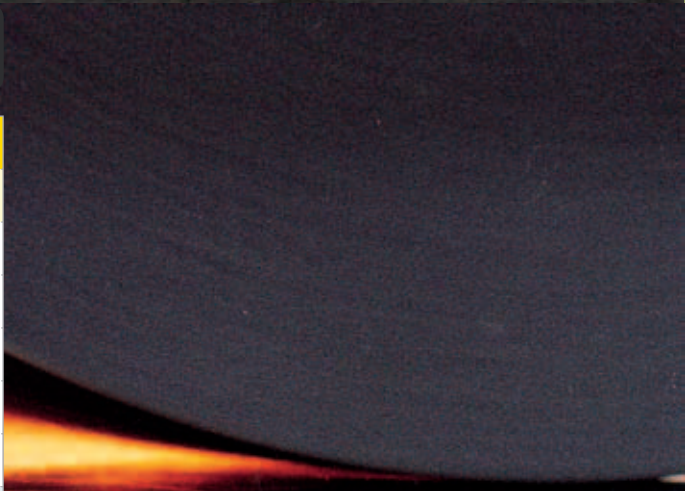


Graders			
Code	T7	Per day	Per Week
09/01	Aveling Barford Grader ASG13	£140.00	£700.00
09/02	MBU 93 Mini Grader	£140.00	£700.00
09/02	PSI M413Xt Mini Grader C/W Front bucket and rear rippers	£200.00	£700.00



GRINDERS

Grinders					
Code	T54	Per day	Per Week	Voltage	Fuel
38/01	4” Grinder	£15.00	£25.00	110v - 240v	
38/10	4½” Grinder - Battery Operated 24V	£15.00	£25.00	Supply 240v	
38/02	9” Grinder	£15.00	£25.00	110v - 240v	
38/06	Floor grinder	£40.00	£160.00		Petrol
38/09	Floor Multiplaner	£90.00	£300.00		Diesel
BLADES + BLOCKS CHARGED EXTRA					



Hand Tools					
Code	T57	Per Week	Code	Per Week	
59/01	Crow bar	£10.00	59/05	Pick axe	£10.00
60/02	Bar bender	£10.00	60/27	Rooftile croppers	£10.00
60/04	Bolt croppers	£10.00	60/28	Sealomastic gun	£10.00
59/02	Fork - Shovel - Spade	£10.00	59/06	Tarmac rake	£10.00
59/03	Graft	£10.00	60/41	Tyrolean gun	£20.00
59/04	Mattock	£10.00	60/39	Wheelbarrow	£10.00
60/24	Nail gun - Hilti*	£18.00	59/09	Block Paver Lifter	£20.00
* = Cartridges and nails extra					

LOADING SHOVELS



Loading Shovels - Rubber Tyres				Specifications		
Code	T31	Per Day	Per Week	Height mm	Width mm	Bucket Capacity
06/03	Kubota R410 - 4 in 1 Bucket *	£80.00	£300.00	2445	1580	0.4³
06/06	Kubota R520 with Bucket*	£100.00	£350.00	2730	1820	0.57³
*Pallet forks available						

Loading Shovels - Tracked				Specifications	
Code	T9	Per Day	Per Week	Width mm	Weight Tonnes
05/01	Fiat Hitachi FL175 with 4 in 1 Bucket	£200.00	£600.00	2480	17.5





LIGHTING

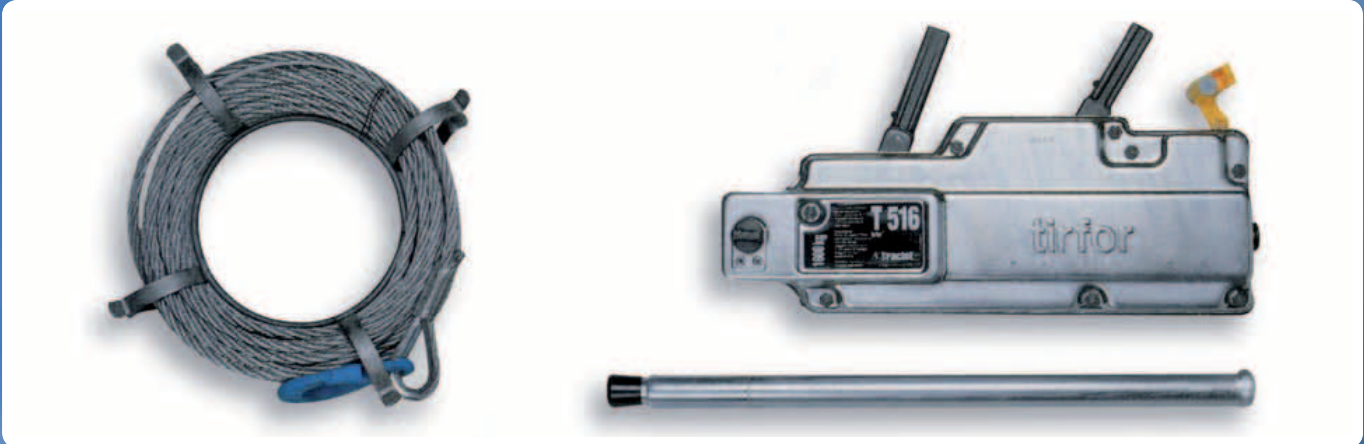
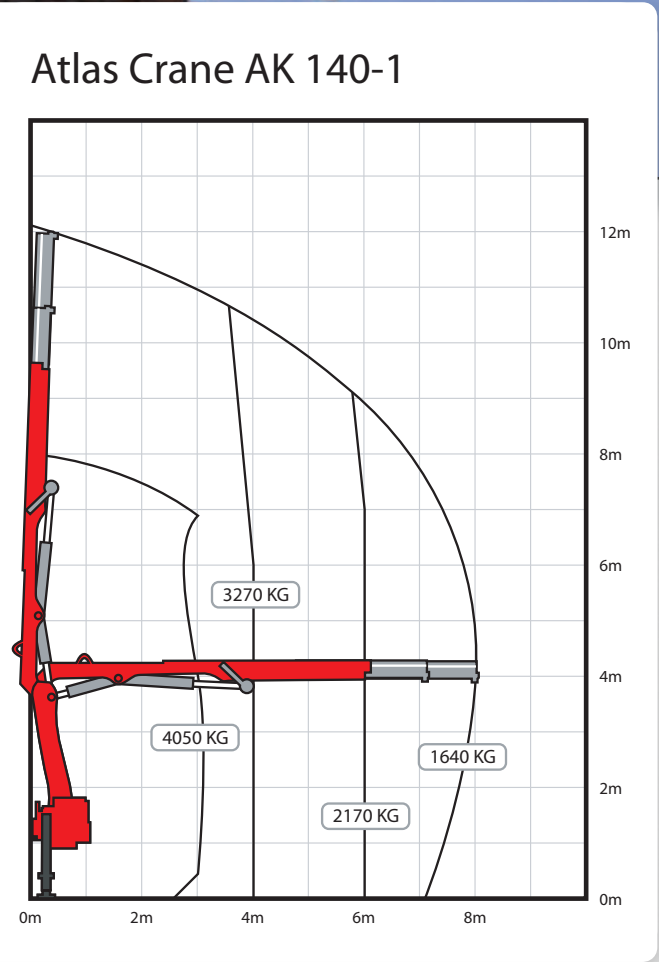
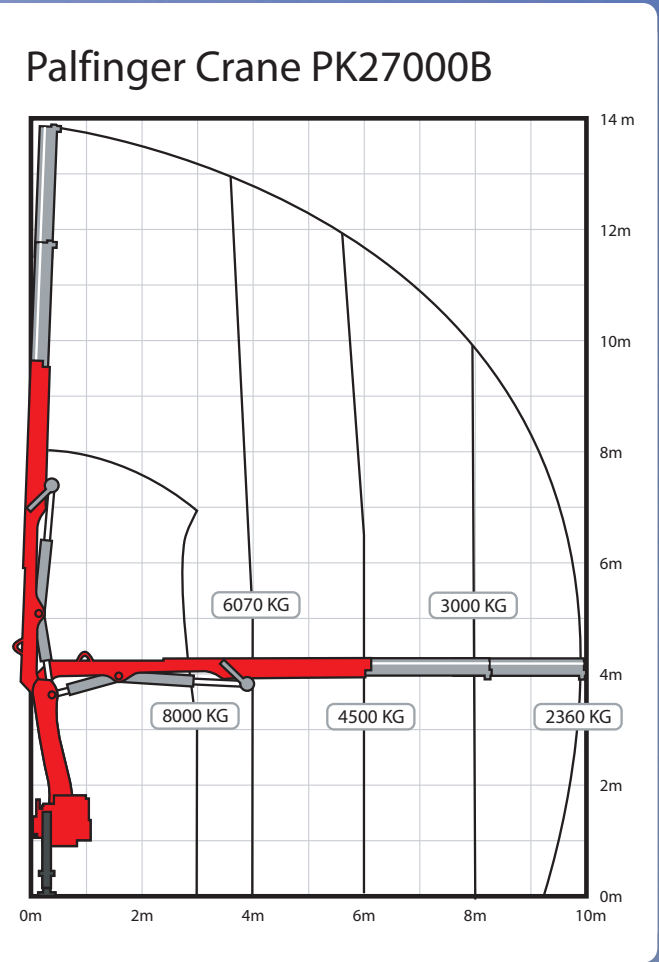
Delivering you quality, on time for your success



Lighting				
Code	T50	Height M	Per day	Per Week
60/13	Floodlights - Single Head - 110v	2	N/A	£11.00
60/13T	Floodlights - Twin Head - 110v		N/A	£12.00
60/13Q	Floodlights - Quad Head - 110v		N/A	£15.00
60/13Q	Floodlights - Quad Head - 110v		N/A	£15.00
39/05	Light boy - Twin Head - 100W head lamps		£10.00	£22.00
39/09	Light Tower - Towable - 4 headed - Multi Directional - Terex	9.0	£75.00	£150.00
39/09	Light Tower - Towable - 4 headed - Multi Directional - Amnman	9.7	£75.00	£150.00
60E/12	Festoon Lights - Length 22m - 10 Bulbs - 110 volt			£12.00
60/13	Fluorescent - Single - 110 Volt			£10.00

Lorries				
Code	T16	Tonne	Per Hour WITH OPERATOR	Per Day SELF DRIVE
17/10	Tipper - Transit**	3.5	N/A	£50.00*
17/01	Tipper - Leyland Roadrunner**	7.5	£60.00	£60.00*
17/05	Multi Lift Tipper - Scania**	22.0	£65.00	N/A
17/06	Flatbed with Atlas Crane - Scania**	26.0	£65.00	N/A
17/04	Flatbed with Palfinger Crane - Scania 8**	32.0	£65.00	N/A
17/04	Multi Lift with Grab - Scania **	32.0	£65.00	N/A
17/07	Low Loader - Scania Artic**	44.0	£70.00	N/A
* REQUIRES EVIDENCE OF FULL COMPREHENSIVE INSURANCE AND AN OPERATORS LICENCE ON 7.5 TONNE				
**ALL LORRIES MINIMUM 3 HOUR HIRE - ALL HIRES ARE + MILEAGE = 10 KM PER HOUR IS ALLOWED OVER THAT DISTANCE THE CHARGE IS £1.20 PER KM				





Load Movers				
Code	T41	Max Load Tonnes	Per Day	Per Week
60/19	Hilman rollers		£15.00	£60.00
60/40	Pallet Truck	1	£15.00	£35.00

Winches				
Code	T39		Per Day	Per Week
60/23	Monkey Winch		£20.00	£50.00
60/33	Tirfor Winch		£20.00	£50.00
ALSO SEE CRANE ATTACHED WINCHES				

Hydraulic Jacks				
Code	T38	Max Load Tonnes	Per Day	Per Week
48/01	Hydraulic Jack	10.0	N/A	£10.00
48/02	Hydraulic Jack	20.0	N/A	£10.00
48/03	Engine Trolley Crane	0.5	N/A	£15.00
48/04	Trolley Jack	3.0	N/A	£12.00
48/05	Toe Jack	5.0	N/A	£10.00
48/06	Vehicle Gearbox Jack		£15.00	£75.00

Block and Tackles				
Code	T40	Max Load Tonnes	Per Day	Per Week
60/10	Endless Chain Pulley	1	£20.00	£40.00
60/11	Endless Chain Pulley	2	£20.00	£40.00
60/12	Endless Chain Pulley	3	£20.00	£40.00



Forklifts				Plant Specifications				
Code	T33	Per day Self Drive	Per Week Self Drive	Weight Tonnes	Height mm	Width mm	Lift Height mm	Max load KG
16/05	Manitou MS120D	£65.00	£325.00	3.5	2305	1323	3040	2000
16/05	Kalmar Climax	£65.00	£325.00	4.5	2980	2100	5500	3000
16/05	Cat Forklift	£65.00	£325.00	3.5	2200	1350	3300	2000

AVAILABLE PERSONNEL LIFT, CRANE ATTACHMENTS, SEE ADDITIONAL ITEMS IN CRANE ATTACHMENTS.



Lifting chains - Strops - Shackles					
Code	T36	Per Week	Code	T36	Per Day Per Week
68/01	Single leg	£15.00	68/05	Strops	N/A £10.00
68/02	Twin leg	£18.00	68/06	Shackles	N/A £10.00
68/03	Triple leg	£22.00	68/07	Manhole Ring lifting eyes	N/A £18.00
68/04	Quad leg	£25.00			

ALL OF THE ABOVE ARE CERTIFICATED



Material Lifts				Specifications	
Code	T88	Per day Self Drive	Per Week Self Drive	Max KG	Max Working Height M
11/11	Beam Hoist - Genie SLA20	£56.00	£150.00	363	6.46
11/19	Beam Hoist - Genie SLA25	£56.00	£150.00	295	7.94
11/21	Superlift SLK25 - with counterweight	£100.00	£250.00	300	7.94



Skidsteers				Specifications			
Code	T34	Per day Self Drive	Per Week Self Drive	Height mm	Width mm	Machine Weight KG	Bucket Tip Height MM
08/01	Posi-Track - RC50	£80.00	£400.00	1956	1524	2812	2921
08/06	Posi-Track - RC100	£120.00	£500.00	2023	1760	4604	3175
08/06m	Posi-Track - RC100 and Mulching Flail *	£300.00	£1250.00	2023	2100	4604	N/A

\* FLAIL WEAR — PICK WEAR — BRUSH WEAR IS CHARGED EXTRA



Posi-Ttack RC100 with Mulching Flail

Skidsteers - Attachments				
Code	T34.01	Per Day	Per Week	Width mm
08A/07	Standard Bucket for Skidsteer	**	**	
08A/02	Bucket 4 in 1 for Skidsteer	**	**	
08A/03	Planer head for Bobcat 400 mm *	£55.00	£275.00	400
08A/04	Dung forks for Skidsteer	£15.00	£60.00	
08A/05	Sweeper for Skidsteer *	£20.00	£80.00	
08A/06	Rotary mower for Skidsteer	£45.00	£225.00	
08A/08	Industrial Pallet Forks for Skidsteer	**	**	
08A/09	Planer Head for the Bobcat *	£55.00	£275.00	450
* FLAIL WEAR, PICK WEAR, BRUSH WEAR IS CHARGED EXTRA.				
** NO CHARGE WHEN A SKIDSTEER IS HIRED				



Posi-Track RC50



Posi-Track RC50





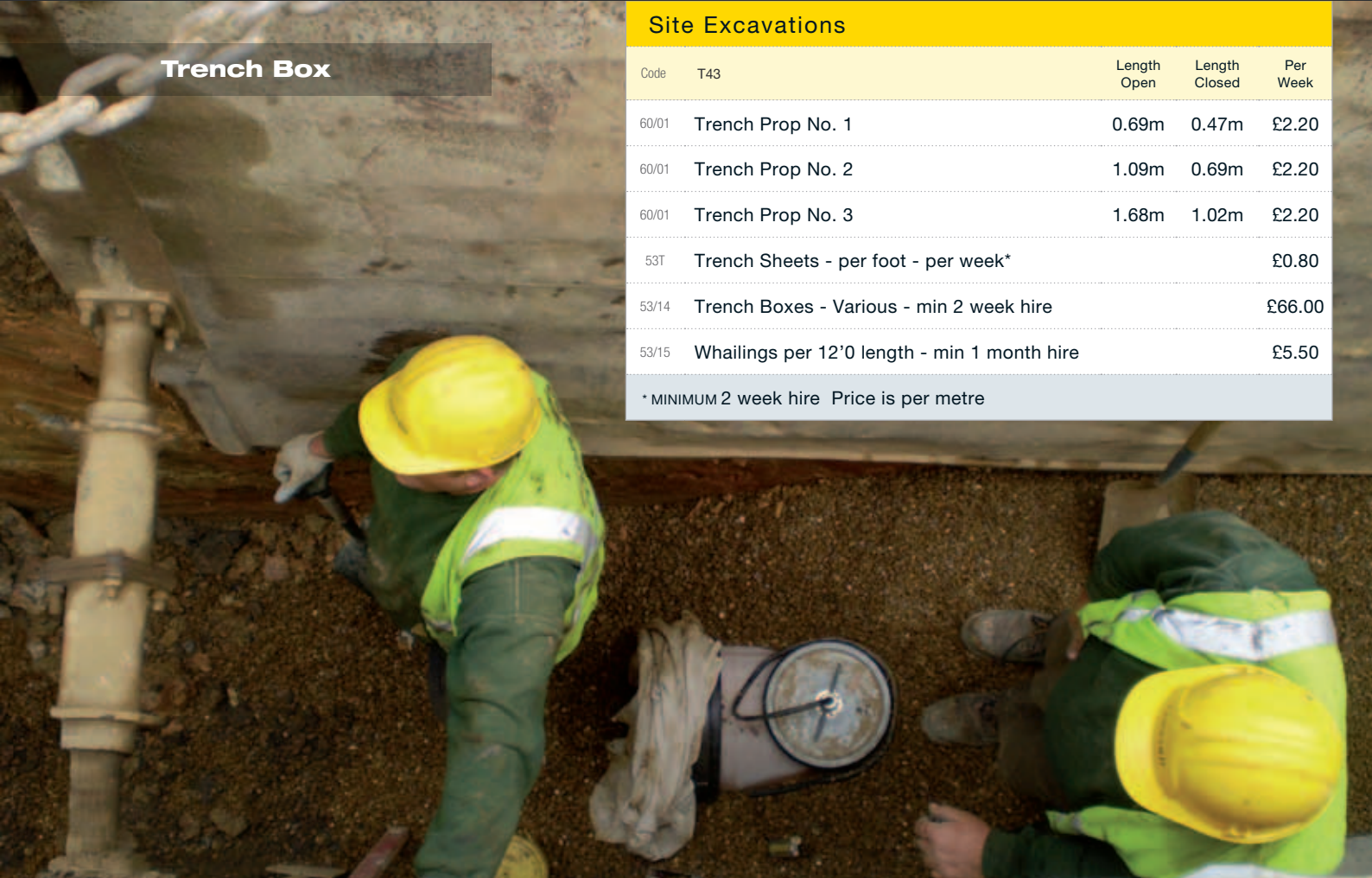
Telescopic Handlers				Plant Specifications			
Code	T32	Per Day	Per Week	Height mm	Width mm	Reach mm	Max load KG
07/01	Manitou Buggiscopic BT420	£70.00	£300.00	1950	1480	4000	2000
07/01	Manitou Buggiscopic BT425	£70.00	£300.00	1980	1436	4000	2500
07/01	Manitou Twisco - SLT415B	£70.00	£300.00	1900	1662	2300	1500
07/02	Merlo P26-6	£85.00	£375.00	2150	2000	6000	2600
07/02	JCB Loadall 536-60 Farm Special	£85.00	£375.00	2490	2230	6000	3600
07/02	JCB Loadall 530-70	£85.00	£375.00	2490	2230	7000	3000
07/04	JCB Loadall 533-10.5	£95.00	£425.00	2490	2290	10500	3300
07/05	JCB Loadall 537-135	£100.00	£450.00	2600	2450	13500	3700
07/06	Manitou Telehandler MT1740	£110.00	£500.00	2590	2425	17000	4000



Telescopic Handlers - Attachments							
Code	T32.01	Per Day	Per Week	Capacity Litre	Length M	Width M	Max load KG
30/14	Concrete Skip 400/500LTR	N/A	£49.00	400/500	1.20	1.30	1000
07/A01	Forklift Tipping Skips 1M³	£10.00	£50.00	1000	1.30	1.20	1000
07/A02	Fork lift Crane Hook	£10.00	£50.00	N/A	0.97 or 0.84	0.45 or 0.65	2500 or 1500
	Pallet Forks if hired with forklift	£0.00	£0.00	N/A	2.20	0.10	2000 - 4000
	Pallet Forks - Long	£5.00	£25.00	N/A	2.20	0.10	2000
	Fork Extensions	£5.00	£25.00	N/A	2.00	0.15	2000
	Dung Forks	£15.00	£60.00	N/A	1.45	2.31	2500
	Crane Hook	£10.00	£50.00	N/A	0.97 or 0.84	0.45 or 0.65	2500 or 1500
	Muck Tipping Skips	£35.00	£105.00	300	0.70	0.70	1000
	Muck Tipping Skips - Large	£35.00	£105.00	1000	1.150	1.150	1000
	Bale Spike	£5.00	£25.00	N/A	0.89	1.40	1500
	Brush for Merlo*	£20.00	£100.00	N/A	1.20	2.50	1000
	Personal Lift	£10.00	£50.00	N/A	1.05	1.30	200
* BRUSH WEAR IS CHARGED EXTRA - SEE ADDITIONAL ITEMS IN CRANE ATTACHMENTS.							



PROPS - ACROW & TRENCH



Trench Box

Site Excavations

Code	T43	Length Open	Length Closed	Per Week
60/01	Trench Prop No. 1	0.69m	0.47m	£2.20
60/01	Trench Prop No. 2	1.09m	0.69m	£2.20
60/01	Trench Prop No. 3	1.68m	1.02m	£2.20
53T	Trench Sheets - per foot - per week*			£0.80
53/14	Trench Boxes - Various - min 2 week hire			£66.00
53/15	Whailings per 12'0 length - min 1 month hire			£5.50
* MINIMUM 2 week hire Price is per metre				

Acrow Props

Code	T42	Per Week	Length Open	Length Closed	Code	Per Week	Length Open	Length Closed	
60/01	Acrows - No. 0	£2.20	1.83 m	1.04 m	60/01	Acrows - No. 2	£2.20	3.35 m	1.98 m
60/01	Acrows - No. 1	£2.20	3.12 m	1.75 m	60/01	Acrows - No. 4	£2.20	4.87 m	3.20 m



Pumps				
Code	T65	Per day	Per Week	Power Supply
32/01	Hand Pump - Barrel 205L	N/A	£15.00	Hand
32/11	Hand Pump - Patay	N/A	£15.00	Hand
32/12	Pump - Submersible - Suitable for heating oil tanks	£10.00	£25.00	12v
32/02	Residue Pump - Submersible - pumps down to 3 mm **	£12.00	£28.00	110v
32/05	Pump 2" - Submersible	£20.00	£35.00	110v
32/03	Pump 2" - Diaphragm **	£25.00	£40.00	Diesel
32/04	Pump 1" - Centrifugal **	£20.00	£35.00	Petrol
32/05	Pump 2" - Hydraulic oil driven*	£12.00	£28.00	Oil
32/13	Pump 3" - Centrifugal	£25.00	£50.00	Petrol
32/06	Pump 3" - Centrifugal**	£25.00	£50.00	Diesel
* HYDRAULIC DRIVE UNIT CHARGED EXTRA   ** C/W 20FT OUTLET HOSE / INLET HOSE WHERE REQUIRED				



Pressure Washers				
Code	T67	Per day	Per Week	Power Supply
34/06	Steam Cleaner - Robby	£14.00	£55.00	240v
34/05	Pressure washer - Heavy duty - 15 LPM*	£25.00	£100.00	Petrol
34/02	Pressure washer - Heavy duty - 30LPM* - 200 Bar	£35.00	£120.00	Diesel
34/04	Pressure washer mounted on 250 Gallon Water Bowser	£50.00	£200.00	Diesel
34A/01	Drain Jetter - attachments to 34/04	£10.00	£50.00	
34/03	Site wheel washer - min 1 week hire	N/A	£200.00	
* LPM = LITRE PER MINUTE				



3" Water Pump



2" Water Pump



3" Water Pump

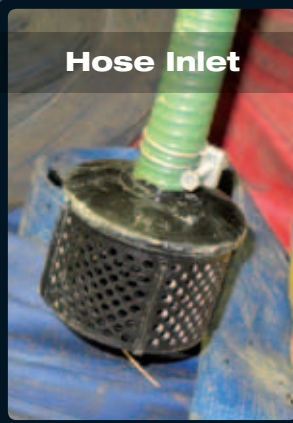


110 V Submersible

Water Pump



3" Ribbed Flexi Hose



Hose Inlet

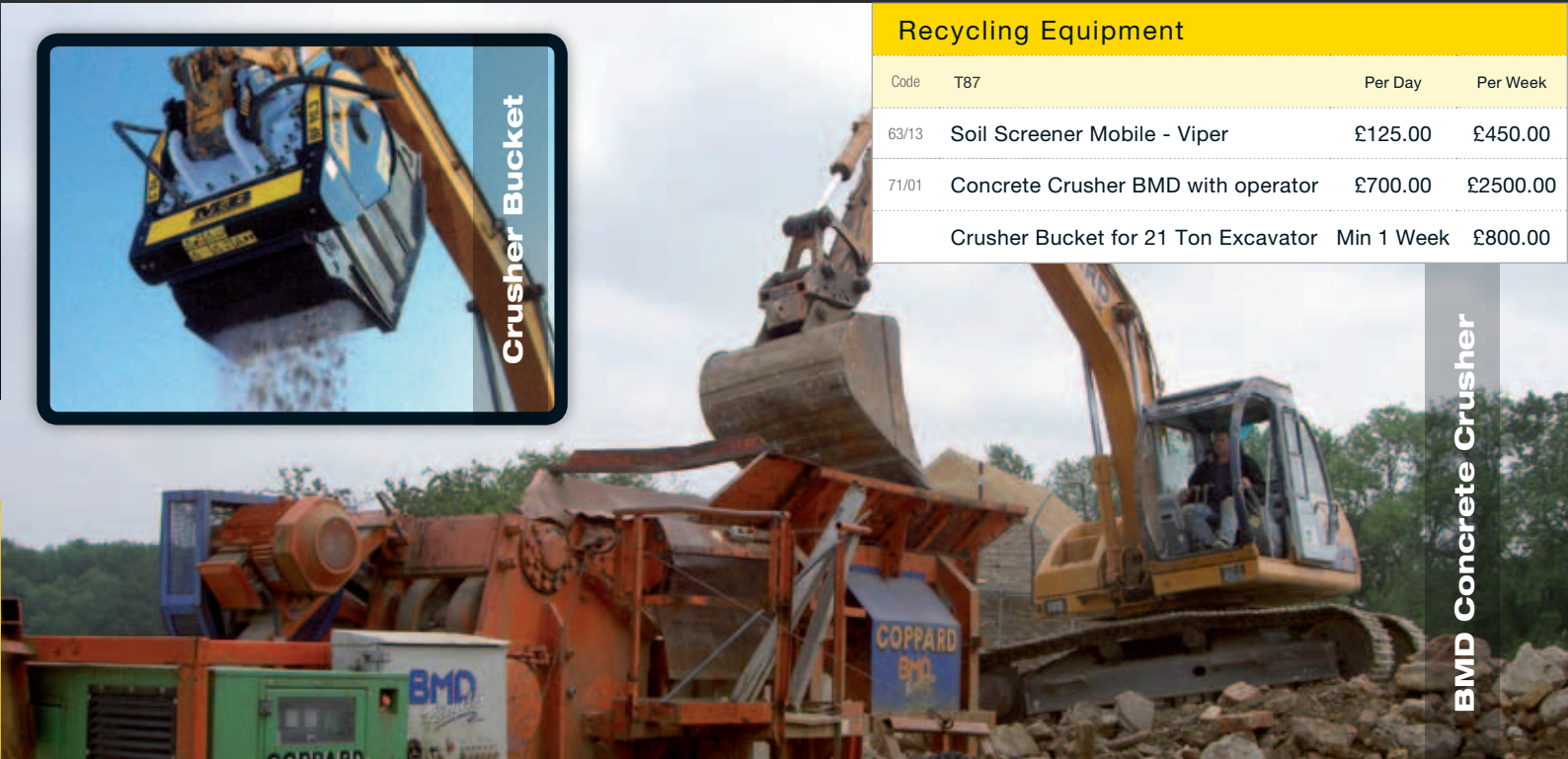
Extra Hose			
Code	T66	Per Week	Section Length
32/08	2" Hose*	£2.75	6 m
32/09	3" Hose*	£3.30	6 m
* MIN 1 WEEK HIRE			



Water Supply	
Code	T68
60/30	Standpipe - with key
60/37	Water Butts



Crusher Bucket



BMD Concrete Crusher

Recycling Equipment			
Code	T87	Per Day	Per Week
63/13	Soil Screener Mobile - Viper	£125.00	£450.00
71/01	Concrete Crusher BMD with operator	£700.00	£2500.00
Crusher Bucket for 21 Ton Excavator		Min 1 Week	£800.00





T: 01892 662777



Asphalt Hot Boxes				
Code	T29	Capacity Tonne	Per Day	Per Week
19/04	Twin Chamber Hot Box - Scania - Oil Fired	9	£250.00	£730.00
19/03	Single Chamber Hot Box - Demountable - Multilift	9	£250.00	£730.00
19/06	Static Hot Box - Oil Fired	15	£100.00	£250.00
19/07	Static Hot Box Oil Fired	20	£100.00	£250.00
*GAS HEATED (GAS USED IS CHARGED EXTRA)				
EVIDENCE OF A FULL COMPREHENSIVE INSURANCE IS REQUIRED FOR SELF DRIVE				

Hot Emulsion Sprayer			
Code	T26	Per Day	Per Week
56/03	Tar Sprayer Self Propelled - Gas heating spray bar / lance*	£325.00	£1625.00
* HIRED WITH OPERATOR			

Cold Emulsion Sprayers			
Code	T25	Per day	Per Week
56/02	Non mechanical	£20.00	£40.00
COLD EMULSION 25 LITRE OR 205 LITRE DRUMS AVAILABLE			

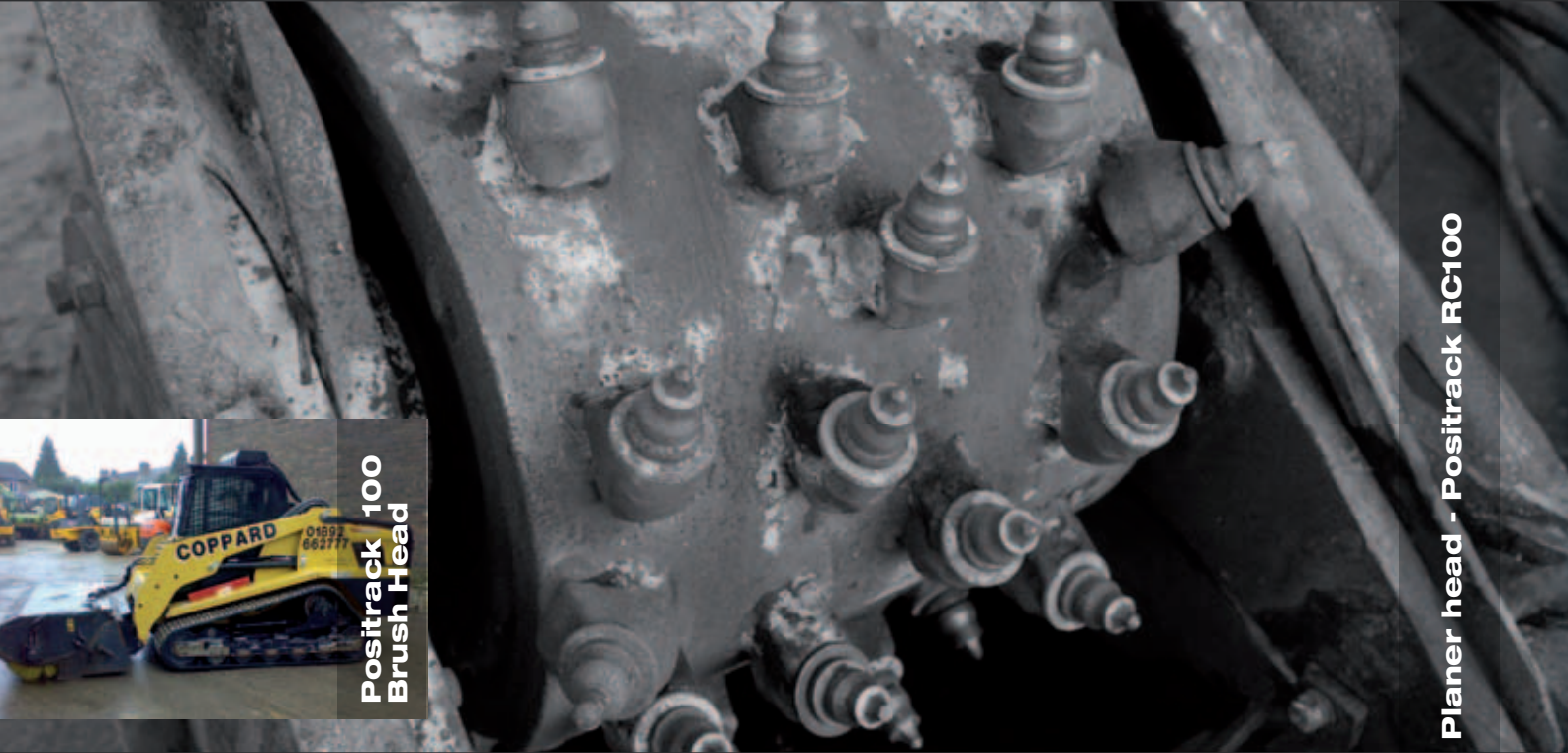
Kerb Lifters & Cutters				
Code	T27	Per Day	Per Week	
72/04	Transport cart - Probst VTK-V - Adjustable paver	£10.00	£40.00	
18/06	Vacuum Kerb Lifter - Probst Vacuum Kerb lifter*	£45.00	£225.00	
72/01	Vacuum Kerb Lifter - BVB	N/A	£300.00	
72/02	Kerb Lifter - Transmanut C/W Forks	£120.00	£600.00	
18/05	Kerb Lifter - Crane Attachment	£15.00	£38.00	
60/20	Kerb lifter - Manual	£12.00	£35.00	
72/03	Bucket - Transmanut 4 in 1	£2.00	£10.00	
60/21	Kerb cutter - Guillotine	£12.00	£40.00	
60/06	Brick cutter - Guillotine	£10.00	£35.00	
*Excavator attachment				



Pavers and Chippers				Specifications	
Code	T22	Per day	Per Week	Min Paving width mm	Maximum Paving Width mm
14/07	Telescreed - Mini Tracked - Demag DF40C*	£450.00	£2250.00	1200	2400
14/01	Telescreed - Barber Greene BG200**	£675.00	£3375.00	1800	3600
14/03	Telescreed - Bitelli 640 - with 2 operators	£675.00	£3375.00	2500	4750
14/05	Chipper 3.6m including trailer	£95.00	£475.00		
GAS + GASOIL USED WILL BE CHARGED AS TIME SHEET - * WITH 1 OPERATOR - ** WITH 2 OPERATORS					







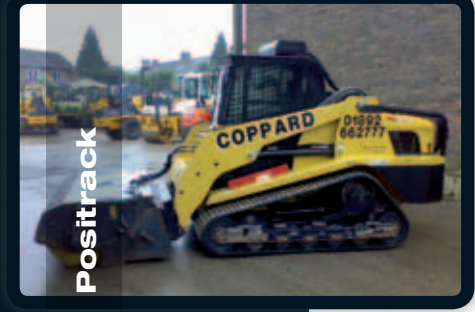
Planers				Specifications	
Code	T30	Per Day Self Drive	Per Day With Operator	Maximum Milling Depth mm	Milling Width mm
08A/03	Skidsteer Planer - Positrack RC100 - Rubber Tracked*	£200.00	£400.00	120	450
12/03	Cold Mill Planer - Wirtgen W500C - with Conveyor*	N/A	£525.00	160	500
* PLANER PICKS CHARGED AT £3.00 EACH					



Road Work Equipment			
Code	T28	Per day	Per Week
52/14	Concrete Barrier Fencing - 2950 mm x 850 mm x 500 mm	N/A	£1.25
52/01	Barrier Fencing - Single Boarded - per metre run	N/A	£1.25
52/02	Barrier Fencing - Double Boarded - per metre run	N/A	£1.75
52/12	Barrier Fencing - Hi-Vis - 50 metre	N/A	£10.00
52/03	Flashing Lights - Excluding Batteries	N/A	£2.75
52/04	Nobo Boards	N/A	£8.00
52/05	Paraffin Road Lamps	N/A	£1.00
52/06	Road Cones 450 mm - other sizes available	N/A	£0.50
52/07	Road Cones 1000 mm - other sizes available	N/A	£0.75
52/08	Road Plates - Steel - various sizes - Anti-skid 2.4 m x 1.2 m	N/A	£12.00
52/13	Road Plates - Plastic - 3000 mm x 750 mm x 15 mm or 20 mm thick	N/A	£10.00
52/09	Road Signs - Various Available	£2.50	£5.00
52/10	Stop & Go Boards – Remote Controlled - ROBO	£28.00	£48.00
52/11	Stop & Go Boards - Manual	£6.00	£15.00



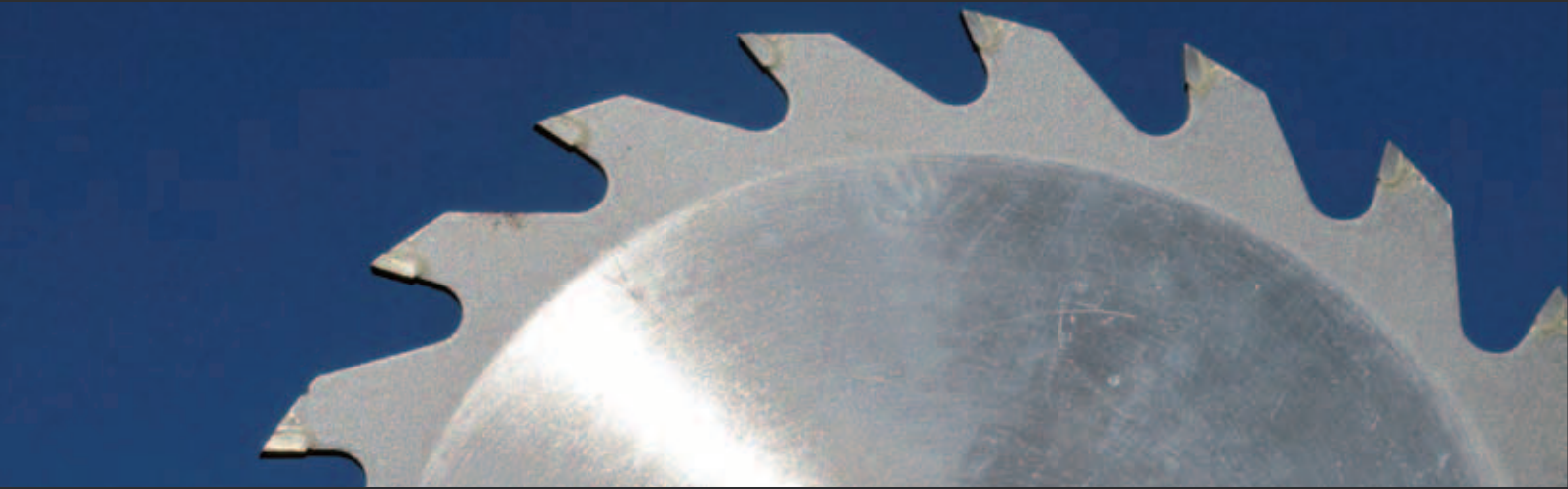
Roadworks



Road Sweepers				Specifications	
Code	T23	Per Hour	Per Day	Per Week	Brush Width mm
62/22	Pedestrian Controlled Sweeper - Cannon	N/A	£45.00	£225.00	1000
15/04	Pedestrian Controlled Sweeper - Kerstern **	N/A	£45.00	£225.00	1000
15/03	Telehandler Sweeper for a Manitou Buggiescopic *	N/A	£120.00	£600.00	1500
8A/05	Skidsteer Sweeper for a Positrack*	N/A	£180.00	£700.00	1900
15/05	Lorry Road Sweeper - Volvo FL6 14 Johnson - with operator ***	£50.00	£500.00	£2500.00	
* BRUSH WEAR CHARGED AT £50.00 PER 25 MM   **KERB ATTACHMENT ALSO AVAILABLE   *** MINIMUM 5 HOUR HIRE + TIPPING CHARGE OF £120 PER LOAD					

White Lining Machines		
Code	T24	Per Week
54/01	Cold White Lining Trolley	£20.00





Saws					
Code	T55	Per day	Per Week	Blade Size MM	Power Supply
45/23	Stihl Saw 350mm - 2 Stroke.	£20.50	£83.50	350	2 Stroke
45/01	Chainsaw Stihl 018 024 See Ref:1 & Ref:2	£42.00	£98.00		2 Stroke
63/19	Chainsaw Stihl Pole Pruner - 3 metre pole - See Ref:1 & Ref:2	£42.00	£98.00		2 Stroke
45/07	Jigsaw - woodcutting	£15.00	£25.00		110v-240v
45/02	Circular Saw 9" - Woodcutting	£15.00	£25.00	230	110v
45/03	De Walt 708 Radial Arm Saw	£15.00	£26.50	305	110v
45/08	Stihl Saw	£15.50	£45.00	300	2 Stroke
45/04	Floor Saw	£27.50	£72.00	350	Petrol
45/05	Floor Saw - Manual	£42.50	£90.00	450	Petrol
45/06	Floor Saw - Self Propelled	£45.00	£95.00	500	Diesel
45/12	Floor Saw	£50.00	£105.00	600	Diesel
45/09	Diamond Blade - plus wear charges	£3.00	£12.00		/
45/10	Reciprocating Masonry Saw	£32.00	£98.00		110v
45/11	Chainsaw - Concrete Cutter - water supply required plus wear charge - Hydraulic driven	£95.00	£475.00	482 mm Max Depth	Breaker Unit
45/13	Circular Saw - Metal Cutting - Hitech Evolution 180	£18.00	£75.00	180	110v
45/14	Circular Saw - Metal Cutting - Hitech Evolution 230	£25.00	£110.00	230	110v
46/01	Bench Saw - Small - Tile	£10.00	£25.00	230	240v
46/02	Bench Saw - Medium - Tile	£16.50	£46.00	230	110v
46/03	Bench Saw - Large - Brick	£25.00	£70.00	350	110v
46/05	Timber Bench Saw - Tractor mounted Portable	£35.00	£150.00	600	
46/04	Timber Bench Saw 24"	£35.00	£150.00	600	Diesel
REF:1 THE FIRST DAY IS CHARGED AS ABOVE THEN £14 PER DAY AFTER THAT.					
REF:2 SAFETY GEAR IS INCLUDED. ONLY AVAILABLE TO HOLDERS OF A CURRENT CERTIFICATE OF COMPETENCE					
DIAMOND BLADES CAN BE SUPPLIED FOR BENCH, FLOOR AND STIHL SAWS AND MUST BE KEPT WET WHEN CUTTING. ALL WEAR TO BLADES IS CHARGED AS FOLLOWS   100MM BLADE - £7.00 PER MM   300MM BLADE - £28.00 PER MM   350MM BLADE - £42.00 PER MM					
450MM BLADE - £56.00 PER MM   500MM BLADE - £70.00 PER MM   600MM - £90.00 PER MM					

Security Fencing				
Code	T76	Per Week	Height M	Length M
51/01	Security Panels*	£1.95	2	3.50
60/29	Security Chains - with lock and 2 keys	£13.00		
51/03	Solid Panel - Heras	£3.50	2	2
51/08	Pedestrian Gate - Heras Panel*	£14.00		
51/09	Roadway Gate - Heras Panel*	£23.50		
51/02	Crowd Panels*	£1.95	1	2
30/06	Fencing pins	£0.45		
* MIN 2 WEEK HIRE - HAZARD TAPE AND ORANGE BARRIER FENCING AVAILABLE FOR SALE				



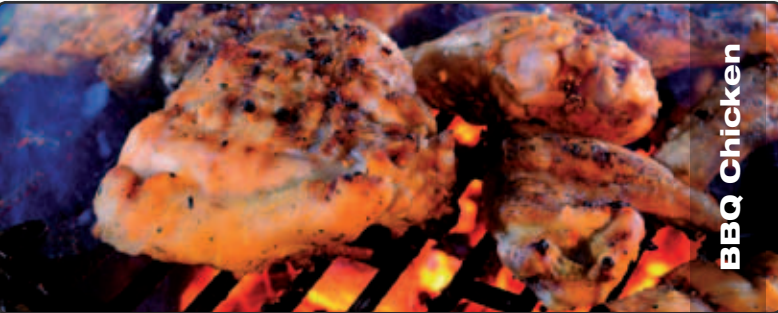
Fencing

SITE EQUIPMENT



Accommodation			
Code	T81	Minimum Term	Per Week
49/01	Toilet - Flush-able	4 Week	£30.00
49/02	Chemical toilet	4 Week	£30.00
49/13	Mains Toilet 240 Volt	4 Week	£30.00
49/04	Mobile office	1 Week	£25.00
49/05	Site hut	1 Week	£20.00
49/11	Diner Unit C/W 2 Tables, Sink, Wall Heater, Microwave, Oven and Fridge	2 Week	£70.00
49/07	Dry Furniture Container - Vented	1 Week	£35.00
49/06	Security Container	1 Week	£25.00
49/12	Sleeper Unit C/W 2 Beds, Shower Hand Basin and Toilet	2 Week	£70.00
49/10	Welfare Unit	2 Week	£200.00
49/14	Infrico Z20 Double Door Bottle Cooler	1 Week	£50.00

Barbecues		
Code	T79	Per Weekend
36/08	Barbecue / Smoker - Wood Fired - Weekend rate	£75.00







Cable Locators			
Code	T74	Per day	Per Week
55/01	Cable Locator - Cat	£20.00	£40.00
55/02	Cable Locator - Genny	£20.00	£40.00
55/03	Mouse Locator	£10.00	£20.00



Gas Detectors		
Code	T75	Per Week
55/04	Multi Monitor	£48.00



Heating				
Code	T78	Per Day	Per Week	Power Supply
36/04	Radiant heaters	N/A	£30.00	240v
36/01	Space Heater - Propane	N/A	£30.00	110v - 240v
36/02	Blow Lamp - Single Headed	N/A	£10.00	Calor Gas
36/06	Blow Lamp - Twin Headed	N/A	£10.00	Calor Gas
36/07	Blow Lamp - Triple Headed	N/A	£12.00	Calor Gas
36/03	Gas Ring	N/A	£10.00	Calor Gas
36/05	Tar Boiler (Bitumen available)	£15.00	£30.00	Calor Gas
GAS   10KG = £5.99   13KG = £10.99   19KG = £15.40   47KG = £35.00				



Dehumidifiers			
Code	T80	Per Week	Power Supply
37/01	Andrews - Hidri	£45.00	110v or 240v



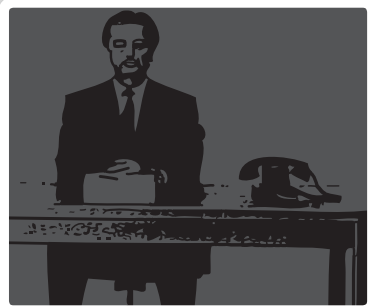
Laser Levels			
Code	T72	Per Day	Per Week
57/01	Barrel Laser - Drain Laying	£20.00	£70.00
57/02	Rotating Laser - Site Level	£28.00	£80.00



Barrel Laser



Levels			
Code	T73	Per Day	Per Week
58/01	Nikon - Leica	£15.00	£30.00
58/03	Ranging Rods	N/A	£1.10



Office Equipment		
Code	T82	Per Week
50/01	Chair	£4.00
50/02	Desk	£9.50
50/03	Chest - Plain	£8.00
50/04	Tables	£5.00



Barrel Laser

Protection		
Code	T77	Per Week
69/04	Impact-bull - Inflatable Air Cushions*	£4.00
60/09	Dust Sheets	£2.75
60/32	Tarpaulins	£6.00
* REQUIRE 45/08 LEAF BLOWER TO INFLATE		



Leica Site Level



Impact Bull



Rotating Laser





Trailers				Load Space	
Code	T17	Per day	Per Week	Width mm	Length mm
26/01	Trailer for single drum roller	£5.00	£15.00		
26/03	1.0 Tonne Trailer - Single Axle	£25.00	£70.00	1230	1840
26/04	2.5 Tonne Trailer - Tandem Axle	£35.00	£80.00	1121	2080
26/07	3.5 Tonne Trailer - Tandem Axle - Drop Side	£40.00	£120.00	1920	3620
26/08	3.5 Tonne Plant Trailer - Tandem Axle	£40.00	£120.00	1600	3050
26/06	10.0 tonne Pipe trailer - not for use on public highway	£35.00	£75.00		

Roller Trailers			
Code	T18	Per day	Per Week
26/01	Trailer for single drum roller	£5.00	£15.00



TRANSFORMERS & LEADS



Extension leads			Specifications	
Code	T52	Per Week	Voltage	Length
43/01	Extension Lead	£4.50	110 V	30'
43/02	Extension Lead	£4.50	240 V	30'

Transformers					
Code	T51	Per day	Per Week	Voltage	KVA Rating
44/01	Single and Double Outlet Transformer	N/A	£6.00	110 V	2.2
44/02	Double Outlet Transformer	N/A	£6.00	110 V	3.0
44/03	Double Outlet Transformer	£15.00	£26.00	110 V	5.0
44/05	Hard Wired Transformer - Requires electrician to connect	£20.00	£35.00	110 V	10.0
44/04	Distribution box    2 & 3 Outlets	N/A	£6.00	N/A	N/A



Vermeer RT100 Trencher

Trenchers				Plant Specifications			
Code	T10	Per day Self Drive	Per Week Self Drive	Max Trenching Depth mm	Trenching Width mm	Machine Height MM	Machine Width MM
13/03	Vermeer RT100 Trencher	£80.00	£200.00	760	100	1180	876
04/11	Kubota KX101-3 C/W Endless Chain Trencher	£127.00	£585.00	800	100 to 200	2375	1610
04/27	1.5 tonne Excavator C/W Klac Margurite Double Capacity Bucket	£85.00	£412.50	Various	100	2250	990
04/28	2.0 to 3.5 Tonne Excavator C/W Klac Margurite Double Capacity Bucket	£96.00	£480.00	Various	100	2275 2440	1400 1700
04/21	5 Tonne Excavator C/W Klac Margurite Double Capacity Bucket	£107.00	£535.00	Various	100 to 200	2548	1840
	Cleveland Trencher with Operator	£600.00	Request	2000	457	3450	2200



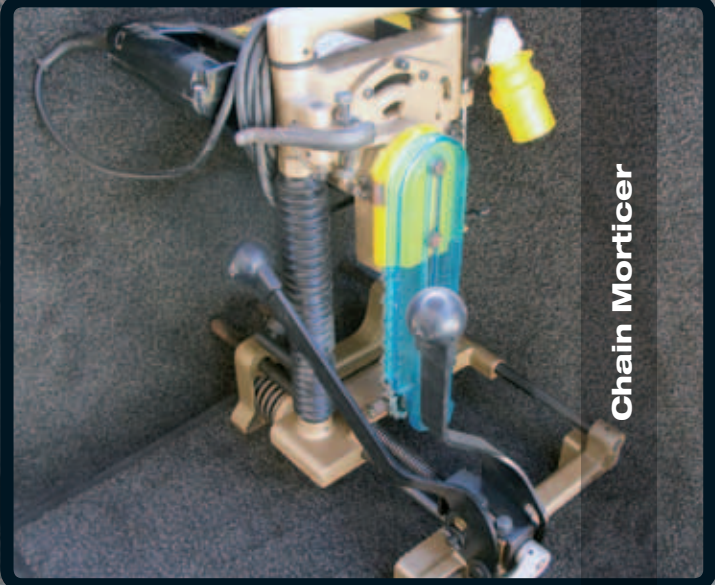
Cleveland Trencher



Double Capacity Bucket



Woodworking Tools				
Code	T53	Per day	Per Week	Voltage
45/21	Router	£12.00	£25.00	240
42/10	Electric Screwdriver	£18.00	£90.00	240
38/03	Belt Sander	£10.00	£20.00	240v
38/07	Orbital Sander	£10.00	£20.00	240v
38/08	Power Planes	£13.50	£27.50	110v
38/04	Floor Sander	£18.00	£44.00	240v
38/05	Floor Edger	£12.00	£30.00	240v
38/12	Chain Morticer	£12.00	£25.00	110v
BLADES AND BELTS CHARGED EXTRA				



Chain Morticer



WELDING EQUIPMENT

Welding Equipment			
Code	T48	Per day	Per Week
33/03	Mig Welder - 180 amp* - Electric 240v	£25.00	£75.00
33/03	Mobile Arc Welder - 150 amp - Petrol	£25.00	£75.00
33/04	Oxy-Acetylene Cutting Gear / Welding Torch*	£25.00	£66.00
*ADDITIONAL CHARGE FOR THE GAS USED			



Always wear GOGGLES



THE CONSTRUCTION PLANT HIRE ASSOCIATION MODEL CONDITIONS FOR THE HIRING OF PLANT (WITH EFFECT FROM JULY 2001)

1. DEFINITIONS

- (a) The "Owner" is the Company, firm or person letting the plant on hire and includes their successors, assigns or personal representatives.
- (b) The "Hirer" is the Company, firm, person, Corporation or public authority taking the owner's plant on hire and includes their successors or personal representatives.
- (c) "Plant" covers all classes of plant, machinery, vehicles, equipment and accessories therefor, which the Owner agrees to hire to the Hirer.
- (d) A "day" shall be 8 hours or if the day is a Friday it shall be 7 hours, unless otherwise specified in the Contract.
- (e) A "working week" covers the period from starting time on Monday to finishing time on Friday.
- (f) The "hire period" shall commence from the time when the plant leaves the Owner's depot or place where last employed and shall continue until the plant is received back at the Owner's named depot or other agreed location.
- (g) A "Consumer Contract" is a contract entered into with a person acting in his own capacity and not for or on behalf of any business or trade entity.

2. EXTENT OF CONTRACT

No conditions other than specifically set forth in the Offer and Acceptance and herein shall be deemed to be incorporated in or to form part of the Contract or shall otherwise govern the relationship between the Owner and the Hirer in relation to the hire of any particular plant pursuant to the Offer and Acceptance. The Contract does not create any right enforceable by or purport to confer any benefit on any person not a party to it except that a person who is a successor to or an assignee of the rights of the Owner is deemed to become a party to the Contract after the date of succession or assignment (as the case may be).

3. ACCEPTANCE OF PLANT

Acceptance of the plant on site implies acceptance of all terms and conditions herein unless otherwise agreed in writing.

4. UNLOADING AND LOADING

The Hirer shall be responsible for the unobstructed access and, unless otherwise agreed in writing, for unloading and loading of the plant at the site, and any personnel supplied by the Owner for such unloading and/or loading shall be deemed to be under the direction and control of the Hirer. Such personnel shall for all purposes in connection with their employment in the unloading and/or loading of the plant be regarded as the servants or agents of the Hirer (but without prejudice to any of the provisions of Clause 13) who alone shall be responsible for all claims arising in connection with unloading and/or loading of the plant by, or with the assistance of, such personnel.

5. DELIVERY IN GOOD ORDER AND MAINTENANCE: INSPECTION REPORTS

- (a) Unless notification in writing to the contrary is received by the Owner from the Hirer in the case of plant supplied with an operator within four working days, and in the case of plant supplied without an operator within three working days, of the plant being delivered to the site, the plant shall be deemed to be in good order, save for either an inherent fault or a fault not ascertainable by reasonable examination, in accordance with terms of the Contract and to the Hirer's satisfaction, provided that where plant requires to be erected on site, the periods above stated shall be calculated from the date of completed erection of plant. The Hirer shall be responsible for its safe keeping, use in a workmanlike manner within the manufacturer's rated capacity and return on the completion of the hire in equal good order (fair wear and tear excepted).
- (b) The Hirer shall when hiring plant without Owner's operator or driver take all reasonable steps to keep himself acquainted with the state and condition of the plant. If such plant be continued at work or in use in an unsafe and unsatisfactory state or environment, the Hirer shall be solely responsible for any damage, loss or accidents whether directly or indirectly arising therefrom.
- (c) The current Inspection Report required under the relevant legislation, or a copy thereof, shall be supplied by the Owner if requested by the Hirer and returned on completion of hire.

6. SERVICING AND INSPECTION

The Hirer shall at all reasonable times allow the Owner, his Agents or his Insurers to have access to the plant to inspect, test, adjust, repair or replace the same. So far as reasonably possible, such work will be carried out at times to suit the convenience of the Hirer.

7. TIMBER MATS OR EQUIVALENT

- (a) If the ground (including any private access road or track) is soft or unsuitable for the plant to work on, travel, or be transported over without timbers or equivalents the Hirer shall supply and lay suitable timbers or equivalents in a suitable position for the plant to travel over, work on, or be transported over, including for the purpose of delivery and collection.
- (b) Where the hire is for lifting equipment, any sound timber or other material supplied by the Owner for use with outriggers/stabilisers is provided solely to assist the Hirer and expressly not to relieve him of his legal, regulatory or contractual obligations to ensure adequate stability of the lifting equipment under the imposed loading.

8. HANDLING OF PLANT

When a driver or operator or any person is supplied by the Owner with the plant, the Owner shall supply a person competent in operating the plant or for such purpose for which the person is supplied and such person shall be under the direction and control of the Hirer. Such drivers or operators or persons shall for all purposes in connection with their employment in the working of the plant be regarded as the servants or agents of the Hirer (but without prejudice to any of the provisions of Clause 13) who also shall be responsible for all claims arising in connection with the operation of the plant by the said drivers/operators/persons. The Hirer shall not allow any other person to operate such plant without the Owner's previous consent to be confirmed in writing.

9. BREAKDOWN, REPAIRS AND ADJUSTMENT

- (a) When the plant is hired without the Owner's driver or operator any breakdown or the unsatisfactory working of any part of the plant must be notified immediately to the Owner. Any claim for breakdown time will only be considered from the time and date of notification.
- (b) Full allowance for the hire charges and for the reasonable cost of repairs that have been authorised by the Owner will be made to the Hirer for any stoppage due to breakdown of plant caused by the development of either an inherent fault or a fault not ascertainable by reasonable examination or fair wear and tear and for all stoppages for normal running repairs in accordance with the terms of the Contract.

- (c) The Hirer shall not, except for the changing of any tyre and repair of punctures, repair the plant without the written authority of the Owner. The changing of any tyre and repair of punctures are however the responsibility of the Hirer who should arrange for them to be changed/repaired without awaiting authorisation from the Owner. The Hirer is responsible for all costs incurred in the changing or replacement of any tyre and the repair of any puncture.
- (d) The Hirer shall be responsible for all expense involved arising from any breakdown and all loss or damage incurred by the Owner due to the Hirer's negligence, misdirection or misuse of the plant, whether by the Hirer or his servants, and for the payment of hire at the idle time rate as defined in Clause 25 during the period the plant is necessarily idle due to such breakdown, loss or damage. The Hirer is responsible for the cost of spares and/or repairs due to theft, loss or vandalism of the plant. The Owner will be responsible for the cost of repairs, inclusive of the cost of spares, to the plant involved in breakdown from all other causes.

10. OTHER STOPPAGES

No claims will be admitted (other than those allowed for under "Breakdown" or for "Idle Time", as herein provided), for stoppages through causes outside the Owner's control, including bad weather or ground conditions nor shall the Owner be responsible for the cost or expense of recovering any plant from soft ground.

11. LOSS OF OTHER PLANT DUE TO BREAKDOWN

Each item of plant specified in the Contract is hired as a separate unit and the breakdown or stoppage of one or more units or vehicles (whether the property of the Owner or otherwise) through any cause whatsoever, shall not entitle the Hirer to compensation or allowance for the loss of working time by any other unit or units of plant working in conjunction therewith, provided that where two or more items of plant are expressly hired together as a unit, such items shall be deemed a unit for the purpose of breakdown.

12. LIMITATION OF LIABILITY

- Except for liability on the part of the Owner which is expressly provided for in the Contract (including these Clauses):
- (a) the Owner shall have no liability or responsibility for any loss or damage of whatever nature due to or arising through any cause beyond his reasonable control;
- (b) the Owner shall have no liability or responsibility, whether by way of indemnity or by reason of any breach of the Contract, breach of statutory duty or misrepresentation or by reason of the commission of any tort (including but not limited to negligence) in connection with the hire, for any of the Hirer's loss of profit, loss of use of the plant or any other asset or facility, loss of production or productivity, loss of contracts with any third party, liabilities of whatever nature to any third party, and/or any other financial or economic loss or indirect or consequential loss or damage of whatever nature; and
- (c) whenever the Contract (including these Clauses) provides that any allowance is to be made against hire charges, such allowance shall be the Hirer's sole and exclusive remedy in respect of the circumstances giving rise to the allowance, and such remedy shall be limited to the amount of hire charges which would otherwise be or become due if the allowance in question had not been made.

13. HIRER'S RESPONSIBILITY FOR LOSS AND DAMAGE

- (a) For the avoidance of doubt it is hereby declared and agreed that nothing in this Clause affects the operation of Clauses 4, 5, 8 and 9 of this Agreement.
- (b) During the continuance of the hire period the Hirer shall subject to the provisions referred to in sub paragraph (a) make good to the Owner all loss of or damage to the plant from whatever cause the same may arise, fair wear and tear excepted, and except as provided in Clause 9 herein, and shall also fully and completely indemnify the Owner in respect of all claims by any person whatsoever for injury to person or property caused by or in connection with or arising out of the storage, transit, transport, unloading, loading or use of the plant during the continuance of the hire period, and in respect of all costs and charges in connection therewith whether arising under statute or common law. In the event of loss of or damage to the plant, hire charges shall be continued at idle time rates as defined in Clause 25 until settlement has been effected.
- (c) Notwithstanding the above the Hirer shall not be responsible for damage, loss or injury due to or arising:
- (i) prior to delivery of any plant to the site (or, where the site is not immediately adjacent to a highway maintainable at the public expense, prior to its leaving such highway) where the plant is in transit by transport of the Owner or as otherwise arranged by the Owner,
- (ii) during the erection and/or dismantling of any plant where such plant requires to be completely erected/dismantled on site, always provided that such erection/dismantling is under the exclusive control of the Owner or his Agent,
- (iii) after the plant has been removed from the site and is in transit on a highway maintainable at the public expense (or where the site is not immediately adjacent to a highway maintainable at the public expense after it has joined such highway) to the Owner by transport of the Owner or as otherwise arranged by the Owner,
- (iv) where plant is travelling to or from a site on a highway maintainable at the public expense (or, where the site is not immediately adjacent to a highway maintainable at the public expense, prior to its leaving or after its joining such highway) under its own power with a driver supplied by the Owner.

14. NOTICE OF ACCIDENTS

If the plant is involved in any accident resulting in injury to persons or damage to property, immediate notice must be given to the Owner by telephone and confirmed in writing to the Owner's office. In relation to any claim in respect of which the Hirer is not bound fully to indemnify the Owner, no admission, offer, promise of payment or indemnity shall be made by the Hirer without the Owner's consent in writing.

15. RE-HIRING ETC.

The plant or any part thereof shall not be re-hired, sub-let, or lent to any third party without the written permission of the Owner.

16. CHANGE OF SITE

The plant shall not be moved from the site to which it was delivered or consigned without the written permission of the Owner.

17. RETURN OF PLANT FOR REPAIRS

If during the hire period the Owner decides that urgent repairs to the plant are necessary he may arrange for such repairs to be carried out on site or at any location of his nomination. In that event the Owner shall be obliged to replace the plant with similar plant if available, the Owner (but without prejudice to any of the provisions of Clauses 9 and/or 13) paying all transport charges involved. In the event of the Owner being unable to replace the plant he shall be entitled to determine the Contract forthwith



(but without prejudice to any of the provisions of Clauses 9 and/or 13) by giving written notice to the Hirer. If such determination occurs:

- (a) within three months from the commencement of hire, the Owner (but without prejudice to any of the provisions of Clauses 9 and/or 13) shall pay all transport charges involved,or,
- (b) more than three months from the commencement of hire, the Owner (but without prejudice to any of the provisions of Clauses 9 and/or 13) shall be liable only for the cost of reloading and return transport.

18. BASIS OF CHARGING

- a) The Hirer shall render to the Owner for each week an accurate statement of the number of hours the plant has worked each day. Where the plant is accompanied by the Owner's driver or operator, the Hirer shall sign the employee's Time Record Sheets. The signature of the Hirer's representative shall bind the Hirer to accept the hours shown on the Time Record Sheets.
- (b) Full allowance will be made for breakdown periods resulting from mechanical or electrical faults or absence of driver or operator supplied by the Owner except where breakdown is due to acts or omissions of third parties and/or the Hirer's misuse, misdirection or negligence, subject however to the provisions of Clause 8 of this Agreement.
- (c) Breakdown time in respect of such periods shall be allowed for not more than 8 hours Monday to Thursday and not more than 7 hours on Friday less the actual hours worked.
- (d) Plant shall be hired out either:
- (i) for a stated minimum number of hours per day or per week or,
- (ii) without any qualification as to minimum hours. Odd days at the beginning and at the end of the hire period shall be charged pro rata.
- (e) Stoppages due to changing of tyres and repairs to punctures will be chargeable as working time up to a maximum of 2 hours for any one stoppage and any excess will be charged for at the appropriate idle time rates.
- (f) In the case of plant which requires to be dismantled for the purpose of transportation, if the Owner agrees to a modification of the hire charge for the period required for assembling on site and dismantling upon completion of hire, such modification of the hire charge and the period for which it shall apply shall be stated on the Hire Contract.

19. PLANT HIRED ON A DAILY BASIS WITHOUT QUALIFICATION AS TO HOURS

The full daily rate will be charged on a daily basis irrespective of the hours worked except in the case of breakdown for which the Owner is responsible, when the actual hours worked will be charged pro rata of the average working day. No hire charge shall be made for Saturday and/or Sunday unless the plant is actually worked.

20. PLANT HIRED BY THE WEEK OR MONTH WITHOUT QUALIFICATION AS TO HOURS

The weekly or monthly rate shall be charged irrespective of the number of hours worked, except in the case of breakdown for which the Owner is responsible when an allowance pro rata of the agreed weekly rate or pro rata of the agreed monthly rate will be made for each full working day broken down calculated to the nearest half working day.

21. PLANT HIRED BY THE WEEK OR THE HOUR FOR A MINIMUM OF 39 HOURS PER WEEK

If no breakdown occurs, the full hire for the minimum period in the Contract will be charged and an additional pro rata charge will be made for hours worked in excess of such minimum period. Allowance will be made for breakdowns up to 8 hours except on Fridays when the allowance will be up to 7 hours providing always that where the actual hours worked are in excess of the minimum period less breakdown time, the actual hours worked shall be chargeable. Idle time for this purpose shall be treated as actual working time. The minimum week of 39 hours shall be reduced by 8 hours Monday to Thursday and 7 hours Friday for each day's statutory holiday occurring in such week, provided that the plant does not work on the holiday.

22. "ALL-IN" RATES

Where "All-In" rates are charged by agreement the minimum period shall be as defined in the Contract and in accordance with the hire rates and terms contained therein, subject to the provisions of Clause 26.

23. COMMENCEMENT AND TERMINATION OF HIRE (TRANSPORT OF PLANT)

- (a) The hire period shall commence from the time when the plant leaves the Owner's depot or place where last employed and shall continue until the plant is received back at the Owner's named depot or other agreed location but an allowance shall be made of not more than one day's hire charge each way for travelling time. If the plant be used on day of travelling, full hire rates shall be paid for the period of use on that day. If more than one day be properly and unavoidably occupied in transporting the plant, a hire charge at idle time rates shall be payable for such extra time, provided that where plant is hired for a total period of less than one week, the full hire rate shall be paid from the date of despatch to the date of return to the Owner's named depot or other agreed location.
- (b) An allowance of not more than one day's travelling time shall be allowed when the plant is travelling to a site other than that specified in the Contract provided that:
- (i) consent to such transfer has been given by the Owner under Clause 16, and,
- (ii) the plant is moved by means other than under its own power, and,
- (iii) the plant shall have been on the site specified in the Contract or on any other site to which consent to transfer has been given under Clause 16 for a period of at least 14 days.

24. NOTICE OF TERMINATION OF CONTRACT

Where the period of hire is indeterminate or having been defined becomes indeterminate the Contract shall be determinable by seven days notice in writing given by either party to the other except in cases where the plant has been lost or damaged. Notwithstanding that the Owner may have agreed to accept less than 7 days notice of termination, the Hirer's obligations under Clause 13 shall continue until the plant is returned to the Owner in accordance with Clause 31 or until the Owner has collected the plant within the 7 days following the acceptance of short notice. Oral notice given by the Hirer to the Owner's driver or operator shall not be deemed to constitute compliance with the provisions of this Clause.

25. IDLE TIME

When the plant is prevented by prolonged inclement weather from working for a complete week, the charge shall be two thirds of the hire rate or such other idle time rate as is stated in the Offer. If the plant works for any time during the guaranteed hire period then the whole of that guaranteed minimum period shall be charged as working time. In any case no period less than one day shall be reckoned as idle time save for as provided for in clause 18(e). Where an"All-In" rate is charged, idle time is charged on the machine element only. Full rate will be charged for the operator.

26. WAGES AND OTHER CHARGEABLE ITEMS RELATING TO DRIVERS AND OPERATORS OF PLANT

All chargeable items shall be paid by the Hirer at the rates contracted save that any subsequent increases before and/or during the hire period arising from awards under any wage agreements and/ or from increases in the employer's statutory contribution shall be charged as additions at cost by the Owner and shall be admitted and paid by the Hirer.

27. TRAVELLING TIME AND FARES

Travelling time and fares for drivers, operators and any person supplied by the Owner, similar expenses incurred at the beginning and end of the hire period and where appropriate return fare of the driver, operator and any person supplied by the Owner to his home will be chargeable at cost. No charge shall be made by the Owner for any such expenses incurred by other employees of the Owner for the purpose of servicing, repair or maintenance of plant, unless necessitated by the Hirer's negligence, misdirection or misuse of the plant.

28. FUEL, OIL AND GREASE

Fuel, oil and grease shall, when supplied by the Owner, be charged at net cost or an agreed estimate of net cost, and when supplied by the Hirer, shall be of a grade or type specified by the Owner.

29. SHARPENING OF DRILLS/STEELS ETC.

The cost of re-sharpening shall be borne by the Hirer.

30. OWNER'S NAME PLATES

The Hirer shall not remove, deface or cover up the Owner's name plate or mark on the plant indicating that it is his property.

31. TRANSPORT

The Hirer shall pay the cost of and if required by the Owner, arrange transport of, the plant from the Owner's depot or other agreed location to the site and return to named depot or other agreed location on completion of the hire period.

32. GOVERNMENT REGULATIONS

The Hirer will be responsible for compliance with relevant regulations issued by the Government or Local Authorities, including regulations under the Factories Acts, Health and Safety at Work Act etc and observance of the Road Traffic Acts should they apply, including the cost of Road Fund Licences and any insurances made necessary thereby, save that if and during such time as the plant is travelling, whether for full or part journey from Owner to site and site to Owner under its own power with a driver supplied by the Owner, the Owner and not the Hirer shall be responsible as aforesaid.

33. PROTECTION OF OWNER'S RIGHTS

- (a) The Hirer shall not re-hire, sell, mortgage, charge, pledge, part with possession of or otherwise deal with the plant except as provided under Clause 15 and shall protect the same against distress, execution or seizure and shall indemnify the Owner against all losses, damage, costs, charges and expenses arising as a direct result of any failure to observe and perform this condition except in the event of Government requisition.
- (b) If the Hirer make default in punctual payment of any sum due to the Owner for hire of plant or other charges or shall fail to observe and perform the terms and conditions of this Contract, or if the Hirer shall suffer any distress or execution to be levied against him or make or propose to make any arrangement with his creditors or becomes insolvent within the meaning of Section 113 of the Housing Grants, Construction and Regeneration Act 1996 or any amendment or re-enactment thereof for the time being in force; or shall do or cause to be done or permit or suffer any act or thing whereby the Owner's rights in the plant may be prejudiced or put into jeopardy, this Contract may forthwith be determined by notice from the Owner to the Hirer (notwithstanding that the Owner may have waived some previous default or matter of the same or a like nature). The Contract shall thereupon be deemed determined by reason of the Hirer's breach and it shall be lawful for the Owner to retake possession of the said plant and for that purpose enter into or upon any premises where the same may be and the determination of the hiring under this Condition shall not affect the right of the Owner to recover from the Hirer any monies due to the Owner under the Contract or any of the Owner's rights and remedies. In particular, without limitation, the Owner shall be entitled to claim the hire charges outstanding as at the date of determination of the hire under this clause, return transport charges under clause 31, and damages for the Hirer's actual or deemed breach of the Contract under this Clause.

35. DISPUTE RESOLUTION

- (a) If the original site is in England or Wales, the proper law of the Contract shall be English law. If the original site is in Scotland, the Contract shall in all respects be construed and operated as a Scottish contract, and shall be interpreted in accordance with Scots law. If the original site is in Northern Ireland, the proper law of the Contract shall be Northern Ireland law.
- (b) The Scheme for Construction Contracts contained in the Scheme for Construction Contracts (England and Wales) Regulations 1998, or any amendment or re-enactment thereof for the time being in force, shall apply to the Contract. The person (if any) specified in the Contract to act as adjudicator may be named in the Offer. The specified nominating body to select adjudicators shall be the Construction Plant Hire Association acting by its President or Chief Executive for the time being. In paragraph 21 of the Scheme "this paragraph" shall be deleted and "paragraph 20" substituted.
- (c) The Owner and the Hirer shall comply forthwith with any decision of the adjudicator; and shall submit to summary judgment and enforcement (and/or, under Scots law, shall consent to a motion for summary decree and submit to enforcement) in respect of all such decisions; in each case, without any defence, set-off, counterclaim, abatement or deduction. Where, under Scots law, the Owner, the Hirer, or the adjudicator, wishes to register a decision of the adjudicator for execution in the Books of Council and Session, any other party shall, on being requested to do so, forthwith consent to such registration by subscribing the decision before a witness.

A

'A' Frame	21
Access Equipment - Boom Lifts	6
Access Equipment - Non Mechanical	5
Access Equipment - Scissor Lifts	6
Access Platforms	5-6
Accommodation	53
Accommodation - Site	53
Acrows	45
Agricultural Implements	7
Agricultural	7
Air Cushions	6
Air Grinder	11
Air Lance	11
Air Poker	11
Andrews - Hidri	54
Arc Welder	58
Artic Low Loader	39
Asphalt Hot Boxes	48
Attachments - Telescopic Handlers	44
Auger - Digga	33
Auger Drive Unit	31
Ausa - Swivel Tip	23-24
Aveling Barford Grader	36

B

Bale Spike	44
Bandstand	5
Bar bender	37
Barbecue / Smoker - Wood Fired	53
Barford Grader	36
Barrel Laser	55
Barrier Fencing	50
Barrow - High Lift	24
Barrow - Pedestrian Controlled	24
Batch Mix Concrete	12
Battery Drill	21
Beam Hoist	42
Belt Sander	58
Bench Saw - Brick	52
Bench Saw - Tile	52

Bench Saw - Timber	52
Bender - Copper Pipe	21
Big Blue Easy Float	13
Blade - Diamond	52
Block and Tackles	41
Block Paver Lifter	37
Blow Lamp	54
Bolt Croppers	37
Boning Rods	21
Boom Lifts	6
Bottle Cooler	53
Bowsers - Fuel	8
Bowsers - Water	8
Breaker - Drill	11
Breaker - Excavator	32
Breaker - Heavy	11
Breathing Apparatus	21
Brick Cutter - Guillotine	49
Brick Grab   Manual	18
Brothers	42
Brush Cutters	34
Brush Float	13
Brush for Merlo	44
Bucket - Transmanut	49
Bucket for Skidsteer	43
Buggiscopic	44

C

C5 to C50 - Concrete	12
Cable Locator	54
Cat Forklift	42
Cement Mixer	14
Chain Pulley	41
Chains - Lifting	42
Chainsaw - Concrete Cutter	52
Chainsaw - Pole Pruner	33
Chainsaw	33
Chair	55
Chemical Toilet	53
Cherry Picker	6
Chest - Storage	55
Chipper - Tar	49



A  
B  
C  
D  
E  
F  
G  
H  
I  
J  
K  
L  
M  
N  
O  
P  
Q  
R  
S  
T  
U  
V  
W  
X  
Y  
Z

Chipper - Wood	33
Circular Saw - Metal Cutting	52
Circular Saw - Woodcutting	52
Cladboy	17
Clearance Rake	31
Clipper Floor Saw	52
Clothing	9
Cold Emulsion Sprayers	48
Cold Mill Planer with Conveyor	50
Cold White Lining Trolley	51
Compaction	10-11
Compactor Plate	11
Compressor Equipment	11
Compressors & Tools	11
Concrete Barrier Fencing	50
Concrete Crusher	47
Concrete Cutter - Chainsaw	52
Concrete Mixer	14
Concrete Nibblers	31
Concrete Preparation Equipment	12-15
Concrete Pump	13
Concrete Services	12
Concrete Skip - Crane Attachment	18
Concrete Skip	13
Concrete Test Cube	13
Concreting	12-15
Container - Vented	53
Copper Pipe Bender	21
Cordless Drill	21
Core Drill - Diamond	21
Crane Attachments - Glass Lifters	17
Crane Attachments	18
Crane Forks	18
Crane Hook - Forklift	44
Crane Hook	44
Crane Loading Charts	18-20
Cranes	16-24
Crawler Crane	16
Croppers	37
Crow Bar	37
Crowd Panels	53
Crusher - Concrete	47

Crusher Bucket	31
Crusher Bucket	47
Cut Quick	52
Cutter - Tarmac	11
Cutter Concrete - Chainsaw	52
D	
Davey Lamps	21
Dehumidifiers	54
Demolition Gun / Pick	11
Desk	55
Diamond Blade	52
Diamond Core Drill	21
Digga	33
Diner Unit	53
Disk Harrow	7
Distribution Box	56
Ditching Bucket - Tilting	31
Ditching Bucket	31
DIY Mixes - Concrete	12
Double Capacity Bucket	57
Double Ladder	5
Double Leg Chain	42
Double Outlet Transformer	56
Dozers	21
Drain Jetter	47
Drain Plugs	21
Drain Rodding	21
Drain Tester U-bend	21
Drainage Equipment	21
Drill - Diamond Core	21
Drill - Percussion	21
Drills	21
Drum Roller	10
Dry Furniture Container - Vented	53
Duct Rod	21
Ductile Iron Cutter	21
Dumpers - Hydraulic Tip	22
Dumpers - Low Ground Pressure	22
Dumpers - Narrow Access	24
Dumpers - Power Swivel	23
Dumpers - Rubber Tracked	24

A  
B  
C  
D  
E  
F  
G  
H  
I  
J  
K  
L  
M  
N  
O  
P  
Q  
R  
S  
T  
U  
V  
W  
X  
Y  
Z

Dumpers - Utility Vehicles	27
Dumpers Tracked with Cranes	25
Dumpers	22-27
Dumpy - Level	55
Dung Forks for Skidsteer	43
Dung Forks	44
Dust Sheets	55
E	
Easy Float	13
Edger - Floor	58
Electric Screwdriver	58
Electrical Breakers	8
Electrical Plant - Various	27
Emulsion Sprayers	48
Endless Chain Pulley	41
Endless Chain Trencher	57
Engine Trolley Crane	41
Ex Works Concrete	12
Excavations - Site	45
Excavator Accessories	32
Excavator Attachments	31-32
Excavator Breaker	32
Excavator Track Mats	32
Excavators 180°	28
Excavators 360° - Offset and Blade	29
Excavators 360°	30
Excavators	28-32
Exhaust Filter	31
Exhaust Filter	31
Extension Leads	56
Extra Hose - Compressor	11
Extra Hose - Pumps	46
Extractor Fans	27
F	
Fans Extractor	27
Fencing - Heras	50
Fencing Concrete Barrier	50
Fencing pins	53
Finishing Equipment - Concrete	13
Flail Mower	43

Flame Thrower - Weed Burner	34
Flashing Lights	50
Flatbed with Crane	39
Floodlights	38
Floor Edger	58
Floor Grinder	36
Floor Multiplaner	36
Floor Sander	58
Floor Saw - Manual	52
Floor Saw - Self Propelled	52
Floor Saw	52
Forestry Equipment	33
Forestry	33
Fork - Shovel - Spade	37
Fork Extensions	44
Forklift Crane Hook	44
Forklift Tipping Skip	44
Forklifts	42
Fuel Bowser	8
Furniture Container - Vented	53
G	
Gang Mowers	7
Garden Vacuum	34
Gardening Equipment	34
Gas Detectors	54
Gas Monitor	21
Gas Ring	54
Geko Glazing Robot	17
Generator	35
Generators - Dual Voltage	35
Genie - Beam Hoist	42
Genie - Electric Scissor Lift	6
Genny Cable Locator	54
Gin wheel	5
Glasboy	16
Glass Lifters - Crane Attachments	17
Glass Lifters	17
Glass Trolley Stillage	17
Glassboy Glass Lifter	17
Glazing Robot	17
Grab Bucket	31



A  
B  
C  
D  
E  
F  
G  
H  
I  
J  
K  
L  
M  
N  
O  
P  
Q  
R  
S  
T  
U  
V  
W  
X  
Y  
Z

Graders	36
Graft	37
Grinder - Battery Operated	36
Grinder - Floor	36
Grinders	36
Grove Hoist	6
Guillotine - Brick Cutter	49
Gulley Scoop	21
Gun - Demolition	11
H	
Hammer Drills	21
Hand Pumps	46
Hand Tools	37
Hard Wired Transformer	56
Harrow - Disc	7
Harrow - Power	34
Haulotte - Boom Lift	6
Heating - Site	54
Heating	54
Heavy Breaker	11
Heavy Rock Drill	11
Hedge Cutter - Excavator Mounted	33
Hedge Cutter - Long Reach	34
Hedge Cutter / Scythe	31
Hedge Cutter	34
Hepsleve - Pipe Cutter	21
Heras - Fencing	50
Hex Driver	21
Hidri	54
High Discharge - Dumpers	24
High Lift - Barrow	24
Hilman Rollers	41
Hilti - Nail Gun	37
Hinowa Light Lift	6
Hoist	6
Hose	46
Hot Boxes	48
Hot Emulsion Sprayer	48
Hydraulic Brick Grab	18
Hydraulic Glass Lifter	17
Hydraulic Jack	41

Hydraulic Tilting Ditching Bucket	31
Hydraulica Glass Lifter	17
I	
Impact Wrench	21
Impact-Bull	5
Independent Breakers	8
Industrial Fans	27
Industrial Pallet Forks for Skidsteer	43
Inflatable Air Cushions	55
Inline Oiler	11
Iron Cutter	21
J	
Jack Hammer	11
JCB 3CX Contractor	28
JCB Loadall - Farm Special	44
JCB Loadall	44
Jensen Chipper	33
Jetter - Drain	21
Jigsaw - Woodcutting	52
JLG Access Hoist	6
K	
Kalmar Climax - Forklift	42
Kango Hammer	8
Kerb Cutter - Guillotine	49
Kerb Lifter – Crane Attachment	49
Kerb Lifter - Manual	49
Kerb Lifter - Probst	31
Kerb Lifter - Transmanut	49
Kerb Lifter	18
Kerb Lifters & Cutters	49
Klac Claw	31
Klac Margurite Double Capacity Bucket	57
Kubota RTV with Sprayer	27
Kubota RTV	27
L	
Ladders	5
Lamp	54
Lamps - Davey	21

Land Clearance Rake	31
Laser Levels	55
Lawn Mower	34
Lawn Scarifier	34
Leads	58
Leaf Blower	34
Levelling Box	7
Levels - Site	55
Levels - Site	55
Lifting Chains - Strops - Shackles	42
Lifting Eyes - Manhole	42
Light boy	38
Light Tower	38
Lighting Tower	38
Lighting	38
Lining Trolley	51
Load Movers	41
Loadall Movers	44
Loading Charts - Crane	18-20
Loading Shovels - Rubber Tyres	37
Loading Shovels - Tracked	37
Long Reach Excavator	55
Lorries	39
Lorry Crane Loading Charts	40
Lorry Road Sweeper	51
Low Ground Pressure - Dumpers	22
Low Loader	39
M	
Maeda Mini Crane - Narrow access	16
Magnetic Drill	21
Mains Toilet	53
Manhole Ring Clamps	42
Manhole Ring Lifting Eyes	42
Maniaccess - Boom Hoist	6
Manitou Buggiscopic	44
Manitou Telehandler	44
Manlift 'A' Frame	21
Manual Handlers	41
Masonry Saw	52
Material Lifts	42
Materials Handling	42-45

Mattock	37
Mechanical - Boom Lifts	6
Mechanical - Scissor Lifts	6
Mechanical Poker	13
Medium Gun - Clayspade	8
Metal Cutting - Circular Saw	52
Mig Welder	58
Mill Planer with Conveyor	50
Mini Crane - Narrow access	16
Mini Crane	16
Mini Endless Chain Trencher	31
Mini Grader	36
Mini Tiller - Pedestrian Controlled	34
Mixer - Concrete	14
Mobile Arc Welder	58
Mobile Office	53
Mole Plough	7
Monkey Winch	41
Mortar Skips	13
Mouse Locator	54
Mower - Heavy Duty	34
Mower Gang	7
Mowers	34
Muck Skip	18
Muck Tipping Skips	44
Multi Lift Tipper	39
Multi Lift with Grab	39
Multi Monitor	54
Multiplaner - Floor	36

N	
Nail Gun - Hilti	37
Narrow Access - Mini Crane	16
Narrow Access Dumpers	24
Needle Gun	11
Nibblers - Concrete	31
Nikon, Leica Levels	55
Nobo Boards	50
Non Mechanical - Access Equipment	5
Non Mechanical - Emulsion Sprayer	48

A  
B  
C  
D  
E  
F  
G  
H  
I  
J  
K  
L  
M  
N  
O  
P  
Q  
R  
S  
T  
U  
V  
W  
X  
Y  
Z



A  
B  
C  
D  
E  
F  
G  
H  
I  
J  
K  
L  
M  
N  
O  
P  
Q  
R  
S  
T  
U  
V  
W  
X  
Y  
Z

O

Office Equipment	55
Orbital Sander	58
Oxy-Acetylene Cutting Gear / Welding Torch	58

P

Paddle Mixer	14
Padfoot Drum Roller	10
Paint Sprayer with Compressor	11
Paint Sprayer	27
Pallet Forks - Long	44
Pallet Forks	37
Pallet Truck	41
Pannkoke Glass Lifter	17
Panther - Hydraulic	8
Paraffin Road Lamps	50
Paver Lifter	37
Pavers and Chippers - Stone	49
Pedestrian Controlled Barrow	24
Pedestrian Controlled Sweeper	51
Pedestrian Gate - Heras Panel	53
Personal Lift	44
Petrol Generator	35
Pick and Carry Cranes	16
Pick Axe	37
Pins - Fencing	53
Pipe Bender - Copper	21
Pipe Cutter - Hepsleve	21
Pipe Lifter	18
Pipe Stilsons	21
Pipe Threader	21
Pipe Trailer	56
Planer Head for Bobcat	43
Planer with Conveyor	50
Planers	50
Plant Trailer - Tandem Axle	56
Plastic Mortar Skips	13
Plumbers Vice	21
Pneumatic Tyred Roller	10
Poker Vibrator	11
Pole Pruner - Chainsaw	33

Pole Scabbler	11
Posi-Track and Mulching Flail	43
Posi-Track	43
Post Rammer	33
Power Float	13
Power Harrow	34
Power Harrow	7
Power Planes	58
Power Swivel - Dumper	23
Powertilt Quick Hitch	31
Preparation Equipment- Concrete	13
Pressure Washers	47
Props - Acrow & Trench	45
Protection - Site	55
Pruner- Chainsaw	33
Pulley - Endless Chain	41
Pump - Centrifugal	46
Pump - Concrete	13
Pump - Diaphragm - Water	46
Pump - Hydraulic Oil Driven	46
Pump - Submersible	46
Pumping & Washing	46-47
Pumps	46

Q

Quad Head - Floodlights	38
Quad Leg Chain	42

R

Radial Arm Saw	52
Radiant Heaters	54
Rake	37
Rammer Foot	11
Rammer	11
Ranging Rods	55
Razor Back Tamp	13
Razor Back	13
Razor Deck - Scaffold Tower	5
Re-Bar Tying Tool	13
Reciprocating Masonry Saw	52
Recycling Equipment	47
Residue Pump	46

Reversible Compactor	11
Right Angle Drill	21
Rigid Harrow	7
Ring Clamps - Manhole	42
Road Cones	50
Road Plates - Plastic	50
Road Plates - Steel	50
Road Signs	50
Road Sweepers	51
Road Work Equipment	50
Roadway Gate - Heras Panel	53
Roadworks & Paving	48-51
Rod - Duct	21
Rods	22
Roller Striker	13
Roller Trailers	56
Rollers - Hilman	41
Rollers	10
Rooftile Croppers	37
Rotary Mower	43
Rotating Laser - Site Level	55
Rotovator - Tractor	7
Rotovator	34
Router	58
RTV - Kubota	27
Rubber Mats	11

S

Safety Harness	6
Sandblasting Pot	11
Sander - Floor	58
Saw - Floor	52
Saw - Tile	52
Saws	52
Scabbler	11
Scaffold boards	5
Scaffold Poles	5
Scaffold Tower	5
Scarifier - Lawn	34
Scissor Lifts	6
Screwdriver - Electric	58
Sealomastic gun	37

Security Chains	53
Security Container	53
Security Fencing	53
Security Panels	53
Self Erecting Scaffold Tower	5
Self Erecting Tower Crane	16
Shackles	42
Shovel - Spade - Fork	37
Shuvholer	33
Single Chamber Hot Box	48
Single Drum Roller	10
Single Head - Floodlights	38
Single Leg Chain	42
Single Outlet Transformer	56
Site - Accommodation	53
Site - Heating	54
Site - Levels	55
Site - Office Equipment	55
Site - Protection	55
Site - Surveying	55
Site Equipment	53-55
Site Excavations	45
Site Hut	53
Skidsteer - Planer	50
Skidsteer - Sweeper	51
Skidsteers - Attachments	43
Skidsteers	43
Skip - Concrete	44
Skip Float	13
Skip Loader - Rubber Track Barrow	24
Skip Loader	24
SkyJack	6
Sleeper Unit	53
Slump Cone	13
Smooth Drum Roller	10
Soil Screener - Mobile	47
Solid Panel - Heras	53
Space Heater - Andrews	54
Spade - Fork - Shovel	37
Spider Crane	16
Spiderlift - Boom Lift	6
Sprayer - Cold Emulsion	48

A  
B  
C  
D  
E  
F  
G  
H  
I  
J  
K  
L  
M  
N  
O  
P  
Q  
R  
S  
T  
U  
V  
W  
X  
Y  
Z



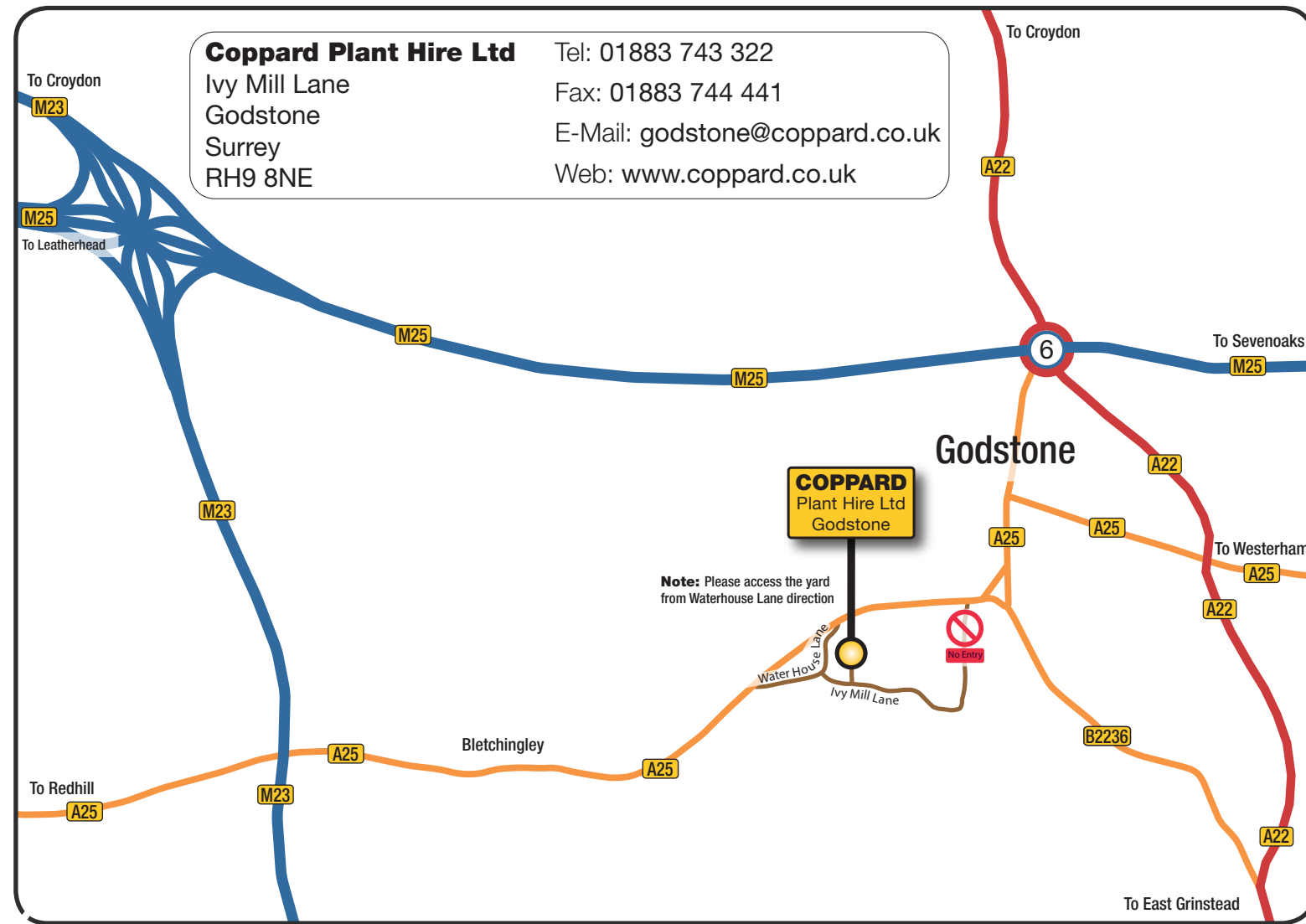
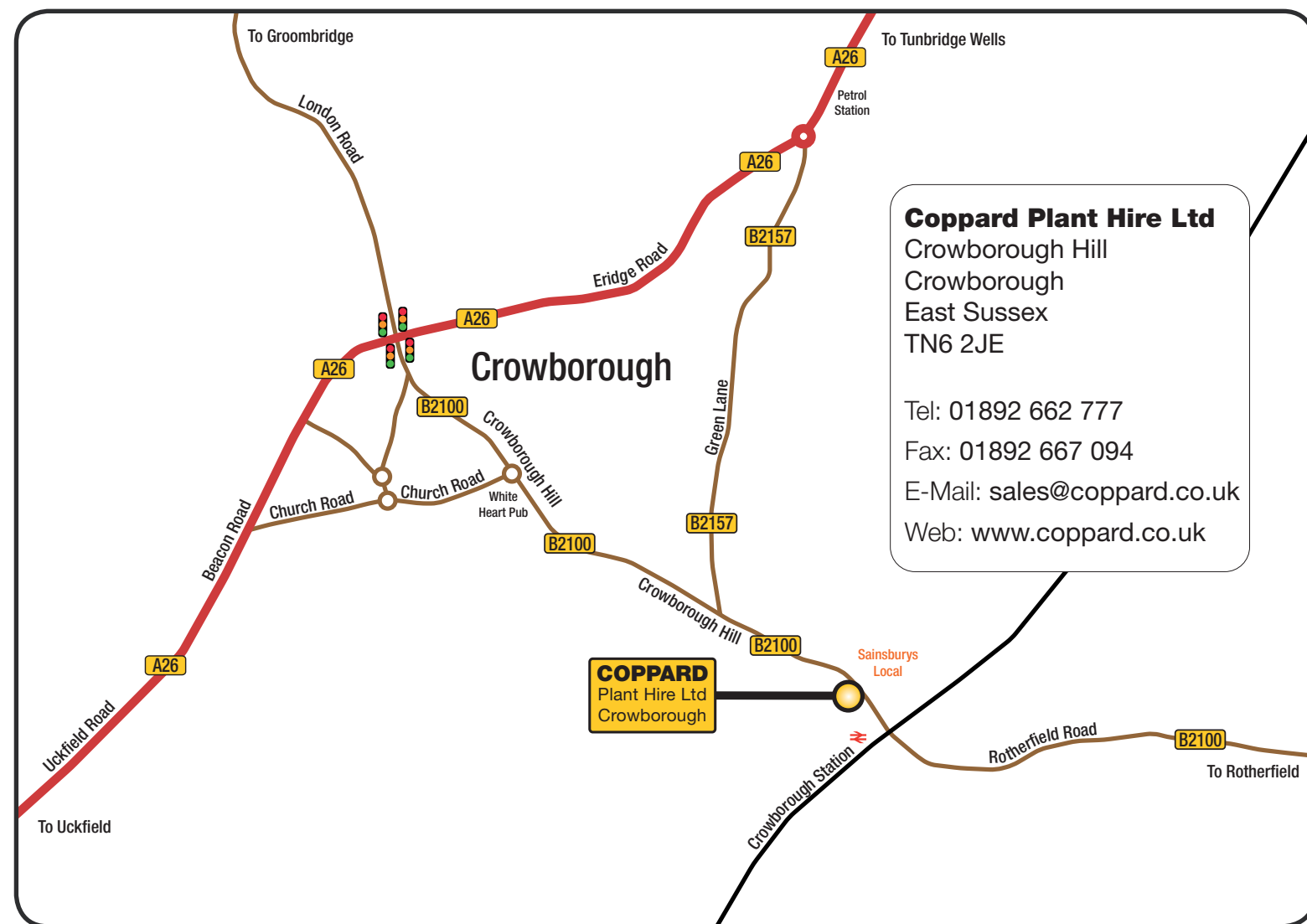
A  
B  
C  
D  
E  
F  
G  
H  
I  
J  
K  
L  
M  
N  
O  
P  
Q  
R  
S  
T  
U  
V  
W  
X  
Y  
Z

A  
B  
C  
D  
E  
F  
G  
H  
I  
J  
K  
L  
M  
N  
O  
P  
Q  
R  
S  
T  
U  
V  
W  
X  
Y  
Z

Sprayer - Knapsack	34	Timber Bench Saw	52
Sprayer on Kubota RTV	27	Timber Grab	31
Standpipe	46	Timber Wolf - Chipper	33
Static Hot Box	48	Tipper - Leyland Roadrunner	39
Steam Cleaner	47	Tipper - Transit	39
Step Ladder	5	Tipping Skip - Forklift	44
Stihl Saws	52	Tirfor Winch	41
Stilsons - Pipe	21	Toe Jack	41
Stop & Go Boards	50	Toilet - Flushable	53
Strimmer	34	Tools & Compressors	11
Strong Arm Drum Mover	18	Topper to suit Kubota Tractor	7
Strops	42	Tower Crane	16
Stump Grinders	33	Track Mats	32
Submersible - Pumps	46	Tracked - Access Platform	6
Submersible - Residue Pump	46	Tracked - Barrow	24
Super Silenced Diesel Generator	35	Tracked - Chipper	33
Superlift	42	Tracked - Dumpers with Cranes	25
Surveying - Site	55	Tracked - Dumpers	23
Sutbusta Exhaust Filter	31	Tracked - Excavators	28-32
Sweeper - Road	51	Tractors	7
Sweeper for Manitou Buggyscopic	51	Trailer - Single Axle	56
Sweeper for Skidsteer	43	Trailer - Tandem Axle	56
Swivel Tip Dumpers	23	Trailer for Single Drum Roller	56
T		Trailers	56
	Tables	Transformers and Leads	56
	Tamp - Razor Back	Transformers	56
	Tar Boiler	Transport Cart - Probst Adjustable Paver	49
	Tar Sprayer	Trench Boxes	45
	Tarmac Cutter	Trench Prop	45
	Tarmac Rake	Trench Roller - Sheeps Foot	10
	Tarpaulins	Trench Sheets	45
	Telescopic Handlers - Attachments	Trenchers - Excavator	31
	Telescopic Handlers	Trenchers	57
	Telescreed - Mini Tracked	Triple Ladder	5
	Telescreed	Triple Leg Chain	42
	Terex Crane - Self Erecting Tower Crane	Trolley Crane	41
	Test Cube - Concrete	Trolley Glass Lifter	17
	Threader	Trolley Jack	41
	Tile Saw	Turf Cutting Machine	34
	Tile Lifter / Breaker	Twin Chamber Hot Box	48
	Timber Bench Saw - Tractor Mounted	Twin Drum - Roller	10
		Twin Head - Floodlights	38

Tyrolean Gun	37	Winches	41
U		Wood Chipper	33
	Unic Mini Crane	Woods Glass Lifter	17
	Upright - Boom Lift	Woodworking Tools	58
	Upright Rammer - Petrol		
	Utility Vehicles		
V		Yanmar Access Platform	6
	Vacuum - Garden	Yanmar Excavator	29
	Vacuum Cleaner	Youngman Boss	6
	Vacuum Glass Lifter	Youngmans Safety Rails	5
	Vacuum Kerb Lifter - Roadworks	Youngmans	5
	Vacuum Lifters		
	Vacuum Slab Lifter - Crane	Z	
	Vacuum Slab Lifter - Excavator	Zero Swing - Excavators	29
	Valla - Crane		
	Vehicle Gearbox Jack		
	Vermeer Chipper		
	Vermeer Trencher		
	Vibrating Plate - Excavator		
	Vibrating Rollers - Compaction		
	Vibrating Tamp		
	Vice		
	Voct Breaker		
W			
	Wacker Plates - Compaction		
	Waiting Time		
	Wallpaper Stripper		
	Water Bowser		
	Water Butts		
	Water Supply		
	Weed Burner		
	Welding Equipment		
	Welfare Unit		
	Wet Bench		
	Whailings		
	Wheel Washer - Site		
	Wheelbarrow		
	White Lining Machines		
	White Lining Trolley		









## Crowborough 01892 662777

Coppard Plant Hire Ltd  
Crowborough Hill  
Crowborough  
East Sussex  
TN6 2JE

E: sales@coppard.co.uk  
W: www.coppard.co.uk  
Fax: 01892 667094

## Godstone 01883 743322

Coppard Plant Hire Ltd  
Ivy Mill Lane  
Godstone  
Surrey  
RH9 8NE

E: godstone@coppard.co.uk  
W: www.coppard.co.uk  
Fax: 01883 744441

## Brighton 01273 596979

Coppard Plant Hire Ltd  
Unit 1 Grange Industrial Estate  
Albion Street, Southwick,  
Brighton Sussex  
BN42 4EN

E: brighton@coppard.co.uk  
W: www.coppard.co.uk  
Fax: 01273 597893



Trade Price List + 10% Non Account Customers