



Thomas EMS 2011 Product Catalog



**Innovative Solutions With You In Mind
2011 Product Catalog**



TCCS - pg 14



CHILL DOC - pg 14

NEW Temperature Control Products!

MED DRAWER - pg 14



Table of Contents

EMS PACKS		ChillCore™ Case	18
Pediatric Pack	3	Chill Doc	19
ALS Ultra Roller & ALS Ultra	4-5	Heating Pack	20
ALS Roller & ALS Pack	6-7	PRE-PACKAGED	
Thomas 02 Pack	8	Pre-Packaged Packs & Kits	21
Aeromed Advanced	8	HARD CASES	
Emergency Medical Pack (EMP)	9	ALS Hard Case	22
Medical Support Pack (MSP)	9	Airway Hard Case	23
Aeromed Pack	10	BLS Hard Case	23
Emergency Responder Pack (ER)	10	TRANSPORTATION & IMMOBILIZATION	
AED Pack	11	Thomas Bariatric Transfer Flat	24
Multi-Purpose Pack (MPP)	11	Thomas Handles	24
Accessories	12-13	MASS CASUALTY	
TEMPERATURE CONTROL		MCI MAN™ & MCI PED™	25
TCCS	14	Thomas Triage Pack	25
Med Drawer	15	Cardio2Go	26
Clima-Tech™ Case	16	Thomas EMS Warranty	27
Med Temp	17	Back Raft™	Back Cover

U. S. Distributors

Alliance Medical: www.allmed.net	(888) 633-6908
Boundtree Medical: www.boundtree.com	(800) 533-0523
Emergency Medical Products: www.buyemp.com	(800) 558-6270
Henry Schein / Matrx Medical: www.henryschein.com	(800) 972-2611
Life Assist: www.life-assist.com	(800) 824-6016
Moore Medical: www.mooremedical.com	(800) 234-1464
PMI: www.progressivemed.com	(800) 764-0636
South Eastern Equipment: www.seequip.com	(800) 334-6656
Stat Medical: www.statmedical.com	(801) 261-4363
VE Ralph: www.veralph.com	(800) 526-1196

International Distributors

Australia: Ferno Australia www.ferno.com.au
Belgium / France Silver Medical www.silvermedical.com
Japan: Ferno Japan www.ferno-jp.com
New Zealand: Frontier Medical www.frontmed.co.nz
Norway / Sweden / Finland: Ferno Norden www.fernonorden.com
South Africa: Ysterplaat Medical Supplies www.yms.co.za
United Kingdom: BoundTree Europe www.boundtree.co.uk DS Medical www.999supplier.co.uk
Canada: Ferno Canada www.fernocan.com



PEDIATRIC PACK

The Thomas EMS Pediatric Pack is the most organized and complete pre-hospital pediatric pack in the industry.

Main Compartment

Eight separate high visibility removable pouches designed to treat all pediatric patients up to 36kg. Each pouch is designed to accommodate all of the medical equipment necessary to treat a patient in each specified weight range.



The Thomas Pediatric Pack can also be used in conjunction with all existing pediatric systems.



All non-weight specific pediatric equipment (BVM, intubation handles, Magill forceps, syringes, etc...) can be stored inside the main inside chamber, or on the interior fold out flap. The fold out flap includes a neo-natal kit, and also features an area to display all quick reference material such as APGAR, Rule of 9, or other important local pediatric treatment information (burn center, poison control, etc...)



Inside lid section consist of two large clear vinyl pockets designed to store multiple pediatric c-collars and larger equipment.

Interior Pouches

he interior of each removable pouch is constructed from a dry erase board material, which allows the medic to clearly label all equipment. Each pouch also includes an attached reference medication chart specific to each weight range, and a small vinyl note card size exterior sleeve to quickly and easily monitor expiration dates of all equipment contained within the pouch.

Dimensions: 20" x 14" x 9"

Made from rugged 1000 Denier Cordura, with a heavy weight fluid resistant nylon base for easy decontamination. Includes both a shoulder strap and carrying handles.

Item	Description
TT105	Thomas Pedi Pack (w/o supplies)
TT105F	Fill Kit Only

Save Time and Money
by purchasing a Thomas Fill Kit for the Pediatric Pack.
See page 21
for a complete contents list.



ALS ULTRA ROLLER & ALS ULTRA



Let's ROLL!!

The ALS Ultra Roller represents the next generation in EMS ergonomics, eliminating the stress and strain of traditional paramedic equipment transport, while still maintaining all of the features of the ALS Ultra.

Key NEW Features

Ultra light (under 3.3 pounds!) internal frame featuring a telescoping handle and inset wheel system, while still maintaining full "backpack" functionality.

Impervious, quick-clean back panel which allows for rapid and easy decontamination and cleaning post-response.

Upgraded, dual-adjust backpack straps with chest connect and "tuck-away" pocket, which allows the backpack straps to remain connected for quick carrying, yet protected from contaminants and everyday wear and tear.



Oxygen and Airway Components

The ALS Ultra Roller and ALS Ultra are designed to accommodate up to a jumbo D size oxygen cylinder. The design of the ALS Ultra packs makes O2 access quick and easy by simply unzipping the top zipper pocket of the pack, which exposes the oxygen cylinder's valve, and eliminates the need to remove the cylinder to administer oxygen to the patient. These packs also include a cylinder sleeve and straps to secure the sleeve to the base of the pack.

The airway section consists of three separate and removable color coded pouches, designed to hold an adult BVM and airways, a pediatric BVM, and a small intubation pouch set (handle, 4 blades, syringes, and other accessories). Each pouch now also contains a clear vinyl window for quick and easy labeling and identification of each pouch's contents. A large interior clear vinyl removable support pouch, located on the inside lid of the pack, is also capable of holding approximately 16 ET tubes.



Intubation Pouch (TT400)



Center Airway Pouch (TT103)



Pediatric Airway Pouch (TT102)





ALS ULTRA ROLLER & ALS ULTRA



Cardiac / Drug Box

Our soft drug box is protected by two pieces of poly-corrugated plastic and three separate ½ pieces of self-enclosed foam. The Thomas padded drug box is able to securely hold over 50 separate drug vials, pre-fills, and medications stored in boxed form. It also includes a separate clear vinyl and lockable narcotic section. The padded center section now contains a clear vinyl zippered pouch for additional syringe or medication storage. The outside of the padded drug box includes a dry erase board and pen for patient note taking, recording vital signs, and medication re-stocking reminders.

Upgrade your ALS Pack with our NEW Deluxe Padded Drug Box
See page 15 for product details.



I.V. Section

I.V. Fluids and accessories can be stored in three separate and removable fully self-contained I.V. pouches. All equipment necessary to start a peripheral I.V. line can be enclosed within each of these pouches, including 1000 ml of liquids, catheters, tubing, gauze, and swabs.

Support Pouches

This section consists of four versatile clear vinyl pouches designed to carry a wide variety of equipment and support supplies. The two large exterior pockets (now deeper and wider) provide additional storage space, designed to accommodate additional medications or a complete airway set.

ALS ULTRA ROLLER Styles

(with wheels and retractable handle)

Item	Description	
TTR150	ALS Ultra Roller, Orange	
TTR1501	ALS Ultra Roller, Orange (clear IV bags)	0
TTR150s	ALS Ultra Roller, Orange (shell only, no pouches)	0
TTR152	ALS Ultra Roller, Blue	
TTR1521	ALS Ultra Roller, Blue (clear IV bags)	
TTR152s	ALS Ultra Roller, Blue (shell only, no pouches)	0
TTR154	ALS Ultra Roller, Black	
TTR1541	ALS Ultra Roller, Black (clear IV bags)	
TTR154s	ALS Ultra Roller, Black (shell only, no pouches)	0
TTR156	ALS Ultra Roller, Red	
TTR1561	ALS Ultra Roller, Red (clear IV bags)	
TTR156s	ALS Ultra Roller, Red (shell only, no pouches)	0

Main compartment: 21" x 14" x 8"
Extended pockets: 23" x 19" x 12"

ALS Ultra Styles

(no wheels or retractable handle)

Item	Description	
TT150	ALS Ultra, Orange	
TT1501	ALS Ultra, Orange, (clear IV bags)	
TT150s	ALS Ultra, Orange (shell only, no pouches)	0
TT152	ALS Ultra, Blue	
TT1521	ALS Ultra, Blue (clear IV bags)	
TT152s	ALS Ultra, Blue (shell only, no pouches)	0
TT154	ALS Ultra, Black	
TT1541	ALS Ultra, Black (clear IV bags)	
TT154s	ALS Ultra, Black (shell only, no pouches)	0
TT156	ALS Ultra, Red	
TT1561	ALS Ultra, Red (clear IV bags)	
TT156s	ALS Ultra, Red (shell only, no pouches)	0

Main compartment: 21" x 14" x 8"
Extended pockets: 23" x 19" x 12"



ALS ROLLER & ALS PACK

The best-selling advanced life support pack in the industry is now the most **VERSATILE** with the addition of an internal lightweight frame, inset high impact wheels, and a telescoping tuck-away handle!!!



Key NEW Features

Ultra light (under 3.3 pounds!) internal frame featuring a telescoping handle and inset wheel system, while still maintaining full “backpack” functionality*

Impervious, quick-clean back panel which allows for rapid and easy decontamination and cleaning post response.

Upgraded, dual-adjust backpack straps with chest connect and “tuck-away” pocket, which allows the backpack straps to remain connected for quick carrying, yet protected from contaminants and everyday wear and tear.

The Thomas ALS Roller and ALS Pack also include two large exterior pockets, eight color coded removable sections, and four exterior removable clear vinyl pouches. All removable cases and pouches are securely fastened in the pack to avoid loss of equipment and supplies, and are easily removed when needed.



Airway Section (TT 101)

The airway section consists of three separate and removable color coded pouches, designed to hold an adult BVM and airways, a pediatric BVM, and a small intubation pouch set (handle, 4 blades, syringes, and other accessories). Each pouch now also contains a clear vinyl window for quick and easy labeling and identification of each pouch’s contents. The removable base of the airway section contains side slots for ET tube storage and allows all airway components to be removed from the pack simultaneously.



Intubation Pouch
(TT400)



Center Airway Pouch
(TT103)



Pediatric Airway Pouch
(TT102)



ALS ROLLER & ALS PACK

Cardiac / Drug Box (TT300)

Our soft drug box is protected by two pieces of poly-corrugated plastic and three separate 1/2 pieces of self-enclosed foam. The Thomas padded drug box is able to securely hold over 50 separate drug vials, pre-fills, and medications stored in boxed form. It also includes a separate clear vinyl and lockable narcotic section. The padded center section now contains a clear vinyl zippered pouch for additional syringe or medication storage. The outside of the padded drug box includes a dry erase board and pen for patient note taking, recording vital signs, and medication re-stocking reminders.



Upgrade your ALS Pack with our NEW Deluxe Padded Drug Box
See page 15 for product details.



I.V. Section (TT500)

I.V. Fluids and accessories are stored in three separate and removable fully self-contained I.V. pouches. All equipment necessary to start a peripheral I.V. line can be contained within each of these pouches, including 1000 ml of liquids, catheters, tubing, gauze, and swabs.

ALS ROLLER Styles

(with wheels and retractable handle)

Item	Description	
TTR100	ALS Roller, Orange	
TTR1001	ALS Roller, Orange (clear IV bags)	
TTR100s	ALS Roller, Orange (shell only, no pouches)	0
TTR120	ALS Roller, Blue	
TTR1201	ALS Roller, Blue (clear IV bags)	
TTR120s	ALS Roller, Blue (shell only, no pouches)	0
TTR140	ALS Roller, Black	
TTR1401	ALS Roller, Black (clear IV bags)	
TTR140s	ALS Roller, Black (shell only, no pouches)	0

Main compartment: 19" x 14" x 7"
Extended pockets: 21" x 19" x 11"

ALS Styles

(no wheels or retractable handle)

Item	Description
TT100	ALS, Orange
TT110	ALS, Orange (clear IV bags)
TT100s	ALS, Orange (shell only, no pouches)
TT120	ALS, Blue
TT121	ALS, Blue (clear IV bags)
TT120s	ALS, Blue (shell only, no pouches)
TT141	ALS, Black
TT1401	ALS, Black (clear IV bags)
TT140s	ALS, Black (shell only, no pouches)

Main compartment: 19" x 14" x 7"
Extended pockets: 21" x 19" x 11"

THOMAS 02 PACK



Loaded with all the features you have come to expect from Thomas (hide-away heavy duty backpack straps, clear vinyl pockets, YKK reverse zippers, multiple carrying options), the Thomas 02 pack is designed to accommodate a "C", "D" or "Jumbo D" size oxygen cylinder, with plenty of room to spare for all accessories and related airway and trauma equipment.



Features

- Multiple zip opening for easy access to the regulator
- Movable, padded internal dividers designed to accommodate multiple BVM's and other trauma and airway supplies
- Large exterior pockets can accommodate large dressings, C-Collars, or burn and emergency blankets
- Multiple carrying options (includes shoulder strap and back-pack straps)
- Made of 1000D water repellent nylon, Evazote® protective foam, and YKK reverse zippers

Item	Description
TT1200	Thomas 02 Pack
	Main Compartment: 26.5" x 10" x 12"
	Extended pockets: 26.5" x 19" x 15"

AEROMED ADVANCED

Aeromed Advanced combines some of our most innovative features from our Aeromed and ALS pack, and includes a newly designed complete airway section.

Features:

- Small removable drug kit
- Thomas' fully self-contained I.V. pouch
- Redi-splint frame
- Two color-coded vinyl pocket
- Deep vinyl pocket capable of holding up to 20 ET tubes
- Complete airway section capable of holding 8 laryngoscope blades
- Large front pocket designed to hold adult & pediatric BVM



Item	Description
TT880	Aeromed Advanced, Orange
TT882	Aeromed Advanced, Blue
TT884	Aeromed Advanced, Black
TT886	Aeromed Advanced, Red

Dimensions: 12" x 14" x 6"



EMERGENCY MEDICAL PACK (EMP)

The Emergency Medical Pack will carry a 'C' sized oxygen bottle with lateral mount regulator, airway equipment, I.V. fluids, and drugs necessary in the early care of critically ill or injured patients.

The EMP includes:

- 1- Drug kit TT300
- 1- I.V. or Bleeding section TT201 or TT211,
- 1- Airway Section TT202 or TT212, 1- Intubation Pouch TT400,
- 1-O2 Bag TT700, 3 -Top Exterior Insert TT124

Item	Description	
TT200	Emergency Medial Pack, Blue	
TT200s	Emergency Medial Pack, Blue (Shell only)	0
TT210	Emergency Medial Pack, Blue (Clear I.V. Bag)	0
TT240	Emergency Medial Pack, Black	
TT240s	Emergency Medial Pack, Black (Shell only)	0
TT241	Emergency Medial Pack, Black (Clear I.V. bag)	0

Main compartment: 15" x 14" x 7"
Extended pockets: 17" x 18" x 10"



MEDICAL SUPPORT PACK (MSP)

The Thomas Medical Support Pack is specifically designed to carry I.V. fluids and drugs necessary in the care of critically ill or injured patients.

This can be used as a stand-alone pack or as an excellent support pack to the Thomas ALS pack when more I.V equipment and medications are needed.

All removable cases and pouches are securely fastened in the pack to avoid loss of equipment and supplies, and are easily removed when needed. The Medical Support Pack is useful as an advanced life support specialty pack for trauma, burn, cardiac, pediatric, or obstetrical transports.

The MSP Pack includes:

- 1 - Drug kit TT300
- 3 - I.V. Bags TT500 or TT510
- 3 - Top Exterior Inserts TT604



Item	Description	
TT600	Medical Support Pack, Red	
TT610	Medical Support Pack, Red (With clear I.V. bags)	0
TT640	Medical Support Pack, Black	
TT641	Medical Support Pack, Black (With clear I.V. bags)	0

Main compartment: 12" x 14" x 7"
Extended pockets: 14" x 18" x 10"



Upgrade your ALS Pack with our NEW Deluxe Padded Drug Box See page 15 for product details.



AEROMED PACK



One of our best-selling packs, the Aeromed pack is an extremely space-efficient and durable pack.

The Aeromed Pack is specifically designed for initial care of the critically ill or injured patient. The Aeromed Pack is most commonly used for ambulance, search and rescue, high rise rescue, helicopter or as a personal medical kit. In addition, the Aeromed Pack is an excellent specialty kit for trauma, pediatric, neonatal, burn, obstetrical, cardiac or respiratory patients.

Equipment sold separately

The placement and closure of these pockets is specially designed to reduce the likelihood of equipment loss. The color coding and clear vinyl front pockets allow rapid location access of equipment and supplies as well as quick re-stocking. The D rings on the back of the pack allow shoulder straps to be easily attached. The ladder frame of the pack can also serve as a splint when needed.

The Aeromed Pack Features

- 4 interior color coded vinyl window pockets
- 3 medium exterior pockets
- 2 large exterior pockets
- 1 large hidden pocket
- 3 small vinyl window interior base pockets

Item	Description
TT890	Aeromed Pack, Orange
TT892	Aeromed Pack, Blue
TT894	Aeromed Pack, Black
TT896	Aeromed Pack, Red

Dimensions: 11" x 12" x 5"

EMERGENCY RESPONDER PACK (ER)



Emergency Responder Pack is specifically designed for initial care of the non-serious, critically ill or injured patient.

The ER pack is most commonly used for ambulance, search and rescue, high rise rescue, helicopter or as a personal medical kit. In addition, the ER pack is an excellent specialty kit for trauma, pediatric, neonatal, burn, obstetrical, cardiac or respiratory patients. The placement and closure of these pockets is specially designed to reduce the likelihood of equipment loss. The color coding and clear vinyl front pockets allow rapid location access of equipment and supplies as well as quick re-stocking. The D rings on the back of the pack allow shoulder straps to be easily attached. The ladder frame of the pack can also serve as a splint when needed.

Features:

- 4 interior color coded vinyl window pockets
- 3 medium exterior pockets
- 1 large hidden pocket
- 3 small vinyl window interior base pockets



Equipment sold separately

Item	Description
TT800	Emergency Responder Pack, Orange
TT820	Emergency Responder Pack, Blue
TT840	Emergency Responder Pack, Black
TT860	Emergency Responder Pack, Red

Dimensions: 12" x 14" x 5"



THOMAS AED PACK

The Thomas AED pack is designed to safely secure, transport, and store virtually all models of automatic external defibrillators on the market today.

Inside the pack, the AED is firmly secured to the base by two adjustable straps and protected by half inch of Evazote foam on the base and a redi-splint on all sides, which can also be removed and used in any situation that requires splinting. The large clear vinyl pocket located immediately above the AED allows for the storage of multiple adult electrodes. The location and size of the vinyl pocket also allows the electrodes to be stored in the "attached" position, saving valuable time at the scene.

The outside of the pack is clearly marked for quick and easy identification of the unit and the large front external pocket is capable of carrying even the largest rechargeable Lithium or spare NiCd battery. The three outside zip down pockets are designed to hold an adult BVM, or other AED accessories, such as cables, simulators, training pads, or CPR supplies.



Item	Description
TT830	AED Pack, Orange
TT832	AED Pack, Blue
TT834	AED Pack, Black
TT836	AED Pack, Red

Dimensions: 12" x 14" x 5"

MULTI-PURPOSE PACK (MPP)

The multi purpose pack serves the needs of many. Support pack, intubation pack, first aid, daily accessory pack or basically whatever purpose you find for it. The pockets have been designed to allow you to open the pack while it is draped over your shoulder allowing you to have both hands free to easily access the contents inside.

Features:

- 2 interior vinyl window pockets
- 1 hidden pocket
- 2 small vinyl window interior base pockets



Item	Description
TT900	Multi-Purpose Pack, Orange
TT920	Multi-Purpose Pack, Blue
TT940	Multi-Purpose Pack, Black
TT960	Multi-Purpose Pack, Red

Dimensions: 10" x 11" x 2.5"



ACCESSORIES



Deluxe Padded Drug Box

Approximately 1" deeper than our standard Padded Drug Box (TT 300), the Thomas EMS Deluxe Padded Drug Box is capable of storing all EMS medications in both their "boxed" form or individually in multiple rows and sizes of elastic webbing. It also includes a separate clear and vinyl lockable narcotic section, and a large clear vinyl zipper pouch for additional medication or syringe storage. The outside of the Deluxe Padded Drug Box includes a dry erase board and pen for patient note taking, recording vital signs, and medication re-stocking reminders. Dimensions: 13" x 9" x 4.5" TT315, Yellow



Drug kit

Our padded drug case provides superb protection for medications. The padded center page adds extra protection for fragile vials and has 2-vinyl window for printed material. Each side of the drug case has over 25 separate elastics to hold viles securely in place. Dimensions: 13" x 9" x 3.5" TT300



Aeromed Drug kit

The Aeromed padded drug case has a Cordura exterior for added durability. The exterior and interior padding provide superb protection for medications. The padded center page adds extra protection for fragile vials and has 2-vinyl window for printed material. Each side of the drug case has over 25 separate elastics to hold viles securely in place. Dimensions: 13" x 9" x 3.5" TT390 Orange TT392 Blue, TT394 Black, TT396 Red



Small Removable Drug Kit

Part of the Aeromed Advanced Pack TT301 Blue



Pediatric Airway Pouch

Color-coded blue/yellow this pouch can hold Intubation tube infant oral sucker, masks, tubing, peds-infant bag. Dimensions: 8"x4"x2" TT102



RSI Drug Case

The RSI Drug Case is insulated and stores perfectly into the Thomas EMS Chillcore case and keeps your key refrigerated medications (cardizem, ativan, succinylcholine, etc.) at ideal storage temperatures. TT305, Red



Oxygen Sleeve

Holds a "D" or "Jumbo D" cylinder. TT700



Center Airway Pouch

The base of this pouch is large enough to hold an adult bag-mask, tubing, and reservoir bag. The lid has 5 elastics to hold oral airways. Dimensions: 8" x 8" x 4" TT103

Insulated IV Pressure Infuser Bag

1000ml TT520



Insulated IV Tubing

TT521



Short Exterior Inserts

This pouch has a handle for easy carrying, and a clear vinyl front window allowing rapid identification of equipment and supplies.

Dimensions: 9" x 5" x 1"

TT104



Long Exterior Inserts

This pouch has a handle for easy carrying, and a clear vinyl front window allowing rapid identification of equipment and supplies.

Dimensions: 19" x 5" x 1"

TT114



Top Exterior Inserts

This pouch has a handle and a clear vinyl front window allowing rapid identification of equipment and supplies.

Dimensions: 5" x 14" x 1"

TT124



Standard I.V. Bag

Holds all equipment necessary to start a peripheral I.V. including 1000 ml of liquids, catheters, tubing, gauze, and swabs.

TT500 - \$16.50

I.V. Bag w/ Clear Front

This I.V. Bag has a vinyl front window allowing rapid identification of equipment and supplies, and a handle for easy carriage. It is large enough to hold 1000cc of fluid, I.V. pressure bag, 6 catheters, Y-blood set, tape, alcohol and betadine swabs.

Dimensions: 11" x 4" x 4"

TT510



Intubation Kit

The Thomas Intubation kit is protected throughout by three large pieces of 1/4" foam to prevent any damage to blades syringes, drugs, or tubes. The Thomas Transport Pack Airway Kit is designed to easily slip into the large front pocket or drug box pocket of the ALS, EMP and MSP.

The inside section is designed to hold:

- Laryngoscope blades and a medium or large handle
- Multiple size syringes from 10cc to 60cc
- Two sizes of Magill forceps and guide
- Lockable vinyl pocket for drugs or other accessories including batteries, smaller size syringes and airways
- Two other pockets (one vinyl) for storing up to 14 ET tubes and holders

Dimensions: 13" x 9" x 3.5"

TT410 (Equipment Sold Separately)



Intubation Pouch

Our intubation pouch can hold an intubation handle, tongue blades, curved blades, straight blades, 10cc syringe and other accessories. It also has a belt clip on the back.

Dimensions: 8" x 4" x 2"

TT400



Shoulder Straps

Compatible with both the Emergency Responder and Aeromed packs. Fully adjustable and made from 1/2" closed cell foam, 420 pack cloth, and 1" nylon webbing.

TT850



Advanced Shoulder Straps

Standard on our Aeromed Advanced pack.

TT852



The TCCS, Temperature Controlled Case Storage, is a temperature controlled storage unit used to maintain drug safe temperatures in a portable 1550 Pelican case (or equivalent). Insulated drug boxes can be placed in the TCCS while not in use and quickly removed when needed.

The TCCS is not a bulky compressor system that requires complicated mounting into an ambulance. The TCCS runs and operates inside or outside of the ambulance.

- Stores critical medications at 72 degrees +/- 5 degrees
- Simple installation
- Reliable and Robust technology
- Internal digital temperature display
- Accommodates padlock for security

The TCCS will operate at 12 or 24 VDC. Peak power consumption is 86 watts, 7 amps at 12 VDC 3.5 amps at 24 VDC. Typical power consumption at nominal ambient temperatures (100F to 30F) is 30-60% of peak.

The TCCS is cooled / heated using a high efficiency thermoelectric cooling assembly. Insulation is state of the art vacuum panels for maximum efficiency.

The TCCS contains no CFC's nor harmful contaminants requiring only standard tools for installation. It is field serviceable with the field service guide. Mount location does require 100 CFM of air movement to function properly. The TCCS can be configured to operate on 120/220 VAC with optional power conversion.

The TCCS requires no specialized training for installation or standard maintenance.



Item #	Description	
TT470	TCCS Unit (w/o hard case)	
TT475	Auxiliary Fans (set of 2)	

TCCS External Dimen-

sions:
 Height: 26.1"
 Width: 8.94"
 Depth: 17.53"

Internal Dimensions:

Height: 15.25"
 Width: 4.5"
 Depth: 10.5"

Optional Equipment



Ventilation Fans - Help maintain airflow in enclosed compartments or storage areas on an ambulance or emergency vehicle. Pre-programmed to run when cabinet temperatures rise above 95 degrees F.

Medication Storage Options



ALS Hard Case
 See page 22 for details.



Medical Support Pack
 See page 9 for details.





The Med Drawer is a Temperature Controlled container/drawer designed to function within an ambulance or rescue vehicle. Temperature controlled substances are accessed through 2 doors with quick action latches for fast access.

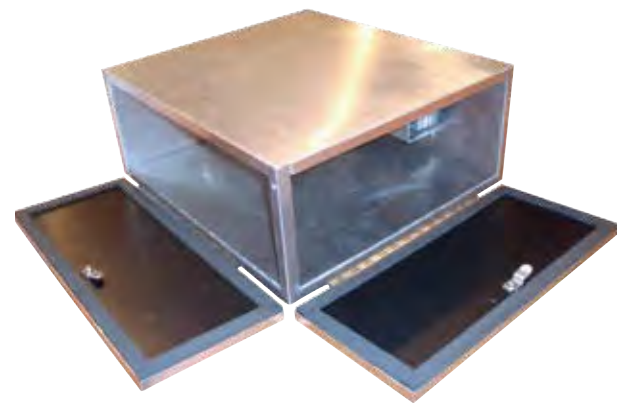
The unique adjacent door system allows for multiple mounting options. This feature creates the ability to have inside and outside access to the unit.

The Med Drawer will operate at 12 or 24 VDC. Peak power consumption is 86 watts, 7 amps at 12 VDC, 3.5 amps at 24 VDC. Typical power consumption at nominal ambient temperatures (100F to 30F) is 30-60% of peak.

The Med Drawer is cooled / heated using a high efficiency thermoelectric cooling assembly. Internal temperature is factory set, custom temperature settings are available. Insulation is state of the art vacuum panels for maximum efficiency.

The Med Drawer contains no CFC's or harmful contaminants. Installation does not require special tools. Unit is field serviceable with the field service guide. Mount location does require 90 CFM of air movement to function properly. The Med Drawer can be configured to operate on 120/220 VAC with optional power conversion.

- Maintains critical medications at 72 degrees +/- 5 degrees
- Installation in a variety of configurations
- Simple and effective installation
- Reliable and Robust technology
- Lockable quick action latches
- Dual door design is fast access for EMTs
- High tech insulation and thermoelectric cooling
- Internal digital temperature display



Med Drawer External Dimensions:


Front door to back engine: 21.3"
Left to right: 20.25"
Height: 9.25"

Med Drawer Internal Dimensions: (usable space)

Front to back: 14"
Left to right: 18"
Height: 6.85"

Item #	Description	
TT747	Med Drawer	
TT475	Auxiliary Fans (set of 2)	

Optional Equipment



Ventilation Fans - Help maintain airflow in enclosed compartments or storage areas on an ambulance or emergency vehicle. Pre-programmed to run when cabinet temperatures rise above 95 degrees F.

Medication Storage Options




NEW Deluxe Drug Case
See page 12 for details.

Yellow Drug Case
See page 12 for details.

 Not intended for the storage of blood.

CLIMA-TECH™ CASE

Clima-Tech is the first “portable climate controlled” case specifically designed for EMS.

Innovative Solutions With You In Mind



Everything comes securely packaged in a rugged Pelican case. Built with stainless steel hardware and padlock protectors for optimum security.



The Clima-Tech's main storage compartment measures 14" W x 13" D x 6" H, providing adequate space for medications that require room temperature storage.

Clima-Tech is designed by EMS professionals for use in extreme hot or cold conditions. When storing or carrying pharmaceuticals there are situations where a controlled environment is not available. Ensure proper temperature control for your drugs with the Clima-Tech Climate Controlled EMS Case. Clima-Tech will allow pharmaceuticals to be temperature controlled for up to 3 hours while running on battery power.

The Clima-Tech offers:

- Easier access to their stored products
- Better utilization and organization of space
- Higher level of security for pharmaceuticals
- Superior product protection
- Built within the durable housing of the Pelican #1560.

Specifications:

- Maintains 50 degrees off ambient temperature
- Automatically maintains +/- 1 degree from set temperature
- Retractable extension handle/polyurethane wheels
- Will cool or heat up to 3 hours on a 9.6V NiMh 5Ah battery
- Battery compartment can hold a total of two batteries for extended life requirements
- Automatically switches to battery power when removed from vehicle
- External digital temperature display
- Interior Dimensions : 14" x 13" x 6"
- 12 Volt vehicle power or 110 volt with optional power supply
- Mounting bracket included
- Smart Sensor monitors temperatures both in and out of the case, simultaneously adjusting the heating/cooling profiles for best temperature regulation and battery life
- Custom colors are available in desert tan, orange and black



Inside the lid the contents are well organized. A double layer of elastic lined clear pockets assist with fast and secure placement of pharmaceuticals and other supplies.



Item	Description
CLIMA1-O	Clima-Tech Case, Orange
CLIMA1-Y	Clima-Tech Case, Yellow
TT656	110 V Charger for Clima-Tech



PATENT PENDING



The NEW Thomas EMS Med-Temp Pack

The New Thomas EMS Med-Temp Pack is designed to allow you to confidently and accurately store all non-refrigerated EMS medications at the manufacturers recommended storage range.

The internal temperature controlled compartment (16" L x 10" W x 9" D) is large enough to store all of your medication and temperature sensitive supplies. The external, non-temperature controlled pockets allow for storage of all basic trauma and response items.



44%

Volume Temperature Controlled
(1,440 cubic inches)

56%

Volume Non-Temperature Controlled
(1,820 cubic inches)

- Pre-set at 70 degrees F
- Maintains approximately 40 degrees off ambient temperature (+/- 4 degrees)
- 2" insulation in the main chamber keeps medications cool even when unplugged and on-scene
- External digital temperature display
- 12 Volt charger included (optional 110 Volt power supply also available) Interior section is lined with removable clear vinyl for easy cleaning and moisture containment
- Includes both shoulder strap & backpack straps
- Cooling unit & temperature display are easily removed for cleaning & decontamination



External digital temperature display for easy monitoring.

Specifications:

Weight:	9 lbs
Main Body Internal:	16"L x 10"W x 9"D
External Dimensions:	23"L x 19"W x 15"D
Temperature Controlled Volume:	1,440 cubic inches
Non-Temperature Controlled Volume:	1,820 cubic inches
Total Cubic Inches:	3,260 cubic inches

Item	Description
TT460	Med-Temp Pack
TT657	110 Volt Charger for Med-Temp Pack



60 Day Money Back Guarantee.

1 Year Repair or Replace.



CHILLCORE™ CASE



The ChillCore™ Case The Therapeutic Hypothermia Induction Case

The CHILLCORE™ Case enables therapeutic hypothermic induction to begin immediately ON-SCENE. The CHILLCORE™ Case keeps IV solutions at desired temperature (as low as 20° F) even in periods of extreme heat.* The CHILLCORE™ Case will comfortably store up to 4 liters of IV solution (or 3 liters when stored with the red Thomas EMS RSI Drug case).

The CHILLCORE™ Case automatically switches to battery power when removed from the vehicle and will operate on its own internal batteries for up to 90 minutes. A built in smart sensor “kicks up” the cooling power during extreme conditions.



External digital temperature display for easy monitoring and precise temperature setting.



- Maintains constant set temperature +/- 1°
- Interior LCD light illuminates the inside of the case in low visibility situations
- Exterior Dimensions: 19.2” x 15.2” x 7.3”
- Interior Dimensions: 11.5” x 9.5” x 3.25”
- Housed in a durable plastic case
- 12 volt vehicle power standard
- Optional 110 volt power supply (sold separately)

Each ChillCore™ Case includes an insulated pressure-infused 1000mL IV bag which allows solution to remain cool during rapid infusion.



Medication Storage Options



The RSI Drug Case is designed and sized to fit inside the ChillCore temperature controlled compartment. (Sold separately) See page 12 for details

Item	Description
TT450	ChillCore™ Case, Orange
TT451	ChillCore™ Case, Yellow0
TT453	ChillCore™ Case, Desert Tan0
*In ambient temperature up to 120°.	
Item	Description
TT652	110 V. Power Cord for ChillCore Case
TT653	Temperature Data Logger
TT520	Insulated IV Pressure Infuser Bag

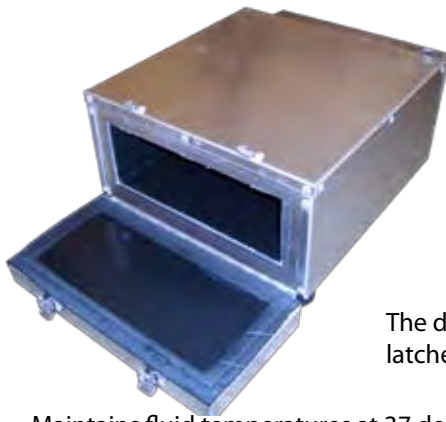
Not intended for the storage of blood.

PATENT PENDING



CHILL DOC

The Chill Doc is a Temperature Controlled container designed to store fluids within therapeutic hypothermia ranges. The Chill Doc is designed to operate within an ambulance or rescue vehicle.

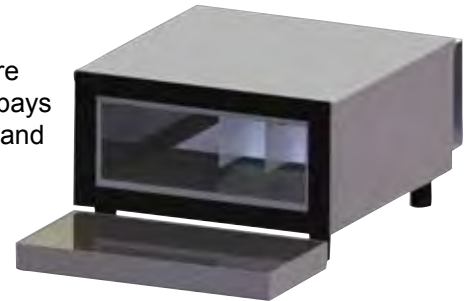


The door uses 2 quick action latches for fast access.



- Maintains fluid temperatures at 37 degrees +/- 3 degrees
- Installation in a variety of configurations
- Simple and effective installation
- Reliable and Robust technology
- Quick Snap locking configuration
- High tech insulation and thermoelectric cooling
- Portable, can be unplugged and moved from vehicle to vehicle

Saline bags are stored in divided bays for quick access and rapid cooling.



Specifications:

The Chill Doc will operate at 12 or 24 VDC. Peak power consumption is 96 watts, 8 amps at 12 VDC 4 amps at 24 VDC. Typical power consumption at nominal ambient temperatures (100F to 30F) is 50-80% of peak.

The Chill Doc is cooled / heated using a high efficiency thermoelectric cooling assembly. Internal temperature is factory set, custom temperature settings are available. Insulation is state of the art vacuum panels for maximum efficiency.

The Chill Doc contains no CFC's or harmful contaminants. Installation does not require special tools. The Chill Doc is field serviceable with the field service guide. Mount location does require 90 CFM of air movement to function properly. The Temp Caddy can be configured to operate on 120/220 VAC with optional power conversion.

Chill Doc External Dimensions:


Front door to back engine: 17.47"
Left to right: 12.85"
Height: 7.07"

Chill Doc Internal Dimensions: (usable space)

Front to back: 11.9"
Left to right: 10.44"
Height: 3.73"

Item	Description
TT478	Chill Doc
TT475	Auxiliary Fans (Set of 2)

Optional Equipment



Ventilation Fans - Help maintain airflow in enclosed compartments or storage areas on an ambulance or emergency vehicle. Pre-programmed to run when cabinet temperatures rise above 95 degrees F.

Medication Storage Options



The RSI Drug Case is designed and sized to fit inside the ChillCore temperature controlled compartment. (Sold separately) See page 12 for details

 Not intended for the storage of blood.



The Thomas Heating Pack is the largest and most complete IV fluid and medication warmer in the EMS industry.

Features of the pack include three interior color coded pockets with elastics designed to hold medications or other IV supplies, and two removable clear vinyl exterior pockets. The outside of the pack is constructed from 1000D water resistant fabric with protective foam and aluminum insulated polyethylene bubbles for maximum heat radiance and temperature maintenance. The exterior of the pack also includes reflective striping for improved visibility.

Additional Features:

- Adjustable back pack straps with chest connect for long distance rescue and treatment (Back pack straps can also be tucked away inside the pack if not needed)
- Holds up to 3 liters of IV fluids as well as all tubing accessories, medications, emergency blankets, blood pressure cuff and stethoscope, rope, and other rescue / treatment accessories
- Includes 1 fully insulated IV bag (pressure infused capable) with removable insulated tubing
- Fuse protected and easily removable ALUMINUM heating element
- Includes a redi-splint that serves as the frame of the pack and provides additional protection and insulation
- Pre-set 98 degree temperature maintained (+/- 1 degree) while plugged in
- Fuse protected and easily removable heating element
- 12 volt operation
- 1 year electronics warranty



Dimensions: 16" x 14" x 7"
 Heating pack comes complete with insulated IV bag and insulated IV tubing. Equipment not included



Insulated IV Pressure Infuser Bag



Insulated Tubing

Item	Description	Item	Description
TT650	Thomas Heating Pack, Red	TT521	Insulated Tubing
TT654	Thomas Heating Pack, Black	TT520	Insulated IV Pressure Infuser Bag
		TT651	110 V Converter



- 1 - Set of Berman oral airways
- 1 - Adult Magill intubating Forceps
- 1 - Pedi Magill intubating Forceps
- 1 - #1 miller blade
- 1 - #2 miller blade
- 1 - #3 miller blade
- 1 - #4 miller blade
- 1 - #1 macintosh blade
- 1 - #2 macintosh blade
- 1 - #3 macintosh blade
- 1 - #4 macintosh blade
- 1 - Adult handle
- 1 - Pedi handle
- 1 - Sprague-Type Stethoscope
- 1 - Blood Pressure Unit
- 2 - Triangular Bandages
- 2 - Kling Sterile Gauze Rolls 3"
- 3 - Gauze Sponges 4"x4"
- 1 - Ammonia Inhalant
- 1 - Glutose
- 1 - Paramed Scissors
- 1 - Rescue Mask
- 6 - ABD Pad 5"x9"
- 1 - Porous Tape Roll 1"
- 2 - Non-Sterile Gloves (Large)
- 1 - Sanizide™ (16 Oz.)
- 2 - Cold Packs
- 1 - S.A.M. Splint
- 2 - Burn Free Unit Dose
- 1 - Aeromed Advanced Pack

TT880F, Orange
TT882F, Blue
TT884F, Black
TT886F, Red

- 1 - set of Berman oral airways
- 1 - S.A.M. Splint
- 2 - Burn-Free Unit Dose
- 1 - Multi-Trauma Dressing
- 10 - Ammonia Inhalants
- 1 - Glutose
- 1 - Paramed Scissors
- 1 - Window Punch
- 1 - Disposable Penlight
- 1 - Sanizide™ (16 Oz.)
- 1 - Sprague-Type Stethoscope
- 1 - Blood Pressure Unit
- 1 - Bite Stick
- 20 - Gauze Sponges 4"x4" Sterile
- 6 - ABD Pad 5"x9"
- 2 - Kling Sterile Gauze Rolls 3"
- 2 - Kling Sterile Gauze Rolls 6"
- 4 - Triangular Bandages
- 1 - Porous Tape 1"
- 1 - Shield Mask
- 4 - Non-Sterile Gloves (Large)
- 1 - Rescue Mask
- 2 - Cold Pack

With Aeromed Pack
TT890F, Orange
TT892F, Blue
TT894F, Black
TT896F, Red
Price: \$279.00

With Emergency Responder
TT800F Orange
TT820F Blue
TT840F Black
TT860F Red

- 5 - Gauze Sponges 4"x4"
- 2 - Kling Sterile Gauze Rolls
- 2 - Triangular Bandages
- 1 - Cold Pack
- 6 - ABD Pads
- 1 - Porous Tape 1"
- 1 - Rescue Mask
- 1 - Paramedic Scissors
- 2 - Burn-Free Unit Dose
- 1 - Ammonia Inhalant
- 1 - Glutose
- 1 - S.A.M. Splint
- 1 - Sanizide™ (16 Oz.)
- 1 - Non-Sterile Gloves (Large)
- 1 - Multi-Purpose Pack

TT900F, Orange
TT920F, Blue
TT940F, Black
TT960F, Red

- 1 - Set of Berman oral airways
- 1 - Adult Magill intubating Forceps
- 1 - Pedi Magill intubating Forceps
- 1 - #1 miller blade
- 1 - #2 miller blade
- 1 - #3 miller blade
- 1 - #4 miller blade
- 1 - #1 macintosh blade
- 1 - #2 macintosh blade
- 1 - #3 macintosh blade
- 1 - #4 macintosh blade
- 1 - Adult handle
- 1 - Pedi handle

TT410F

Thomas EMS Fill Kit List (TT105F) for the Thomas Pedi Pack

3-5kg	6-9kg	10-11kg	12-14kg	15-18kg	19-22kg
2.5 ET Tube	2.5 ET Tube	4.0 ET Tube	4.5 ET Tube	5.0 ET Tube	5.5 ET Tube
3.0 ET Tube	3.0 ET Tube	8 FR Suction Catheter	10 FR Suction Catheter	10 FR Suction Catheter	10 FR Suction Catheter
5 FR Suction Catheter	3.5 ET Tube	10 FR Suction Catheter	60mm Oral Airway	60mm Oral Airway	80mm Oral Airway
6 FR Suction Catheter	5 FR Suction Catheter	60mm Oral Airway	10 FR Nasogastric Tube	70mm Oral Airway	12 FR Nasogastric Tube
40mm Oral Airway	6 FR Suction Catheter	8 FR Nasogastric Tube	18G x 1.25" IV Catheter	10 FR Nasogastric Tube	14 FR Nasogastric Tube
50mm Oral Airway	40mm Oral Airway	10 FR Nasogastric Tube	20G x 1.25" IV Catheter	12 FR Nasogastric Tube	18G x 1.25" IV Catheter
8 FR Nasogastric Tube	50mm Oral Airway	20G x 1.25" IV Catheter	22G x 1.00" IV Catheter	18G x 1.25" IV Catheter	20G x 1.25" IV Catheter
24G x .75" IV Catheter	8 FR Tube	22G x 1.00" IV Catheter	21G Butterfly Needle	20G x 1.25" IV Catheter	21G Butterfly Needle
25G Butterfly Needle	22G x 1.00" IV Catheter	24G x .75" IV Catheter	23G Butterfly Needle	22G x 1.00" IV Catheter	23G Butterfly Needle
Miller #00 Blade	24G x .75" IV Catheter	21G Butterfly Needle	Miller #2 Disp. Blade	21G Butterfly Needle	Miller #2 Disp. Blade
Miller #0 Disp. Blade	23G Butterfly Needle	23G Butterfly Needle	Mac #3 Disp. Blade	23G Butterfly Needle	Mac #3 Disp. Blade
IV Start Kit	25G Butterfly Needle	Miller #1 Disp. Blade	IV Start Kit	Miller #2 Disp. Blade	IV Start Kit
Alcohol Prep Pad	Miller #0 Disp. Blade	Mac #2 Disp. Blade	Alcohol Prep Pad	Mac #3 Disp. Blade	Alcohol Prep Pad
Pediatric ECG Electrode	Miller #1 Disp. Blade	IV Start Kit	Pediatric ECG Electrode	IV Start Kit	Pediatric ECG Electrode
	IV Start Kit	Alcohol Prep Pad		Alcohol Prep Pad	
	Alcohol Prep Pad	Pediatric ECG Electrode		Pediatric ECG Electrode	
	Pediatric ECG Electrode				

24-28kg

- 6.0 ET Tube
- 10 FR Suction Catheter
- 80 mm Oral Airway
- 14 FR Nasogastric Tube
- 16 FR Nasogastric Tube
- 18G x 1.25" IV Catheter
- 20G x 1.25" IV Catheter
- 19G Butterfly Needle
- 21G Butterfly Needle
- Miller #2 Disp. Blade
- Miller #3 Disp. Blade
- Mac #3 Disp. Blade
- Mac #4 Disp. Blade
- IV Start Kit
- Alcohol Prep Pad
- Pediatric ECG Electrode

30-36 kg

- 6.5 ET Tube
- 12 FR Suction Catheter
- 90 mm Oral Airway
- 18 FR Nasogastric Tube
- 16G x 1.25" IV Catheter
- 18G x 1.25" IV Catheter
- 20G x 1.25" IV Catheter
- 19G Butterfly Needle
- 21G Butterfly Needle
- Miller #3 Disp. Blade
- Mac #4 Disp. Blade
- IV Start Kit
- Alcohol Prep Pad
- Pediatric ECG Electrode

Non-weight specific equipment

- 500 ml Sodium Chloride
- 3-way Stopcock
- 10 Drop - IV Set
- 60 Drop - IV Set
- 1" Tape
- Infant - BP Cuff
- Child - BP Cuff
- Infant - Cervical Collar
- Pediatric - Cervical Collar
- Pediatric - Stethoscope
- Infant - Nasal Cannula
- Pediatric - Nasal Cannula
- Pediatric - CO2 Detector
- Pediatric - Magill Forceps
- 2 oz. Bulb Syringe
- 15G - I.O. Needle
- 18G - I.O. Needle
- Sharps Shuttle
- 6" IV Arm Board
- 9" IV Arm Board
- Small - Laryngoscope Handle
- Medium - Laryngoscope Handle
- Infant - BVM
- Child - BVM
- Neonate - Disposable Mask
- Infant - Disposable Mask
- Toddler - Disposable Mask
- Small - Disposable Mask
- Infant - O2 Non-rebreather Mask
- Pediatric - O2 Non-rebreather Mask

TT105F - Complete Fill Kit

THOMAS ALS HARD CASE

Innovative Solutions With You In Mind



Keep your ALS equipment and pharmaceuticals in a lockable, durable and organized hard case.

Large Removable Drug Case

The Thomas ALS Medication Hard Case features a Large Removable Padded Drug Case located in the lid of the Case. This allows several medics the flexibility to work out of the same Case in multiple victim situations. In single victim situations, the Drug Case can remain secured to the lid and still fully functional.

The Padded Drug Box is secured to the lid of the Hard Case by 6 neodymium magnets, completely eliminating the need for Velcro. The use of fluid-resistant heavy weight vinyl and closed cell foam also significantly reduces breakage risk and makes decontamination and basic cleaning quick and easy.

The layout of the elastic drug securing system and pocket design allows for the accommodation of all methods of drug delivery and storage (pre-filled, ampoules, boxed storage, etc..) The Drug Case also contains a clear vinyl locking section for narcotic storage.



Foam Divided Base

The base of the Thomas ALS Medication Hard Case consists of a modular, foam divider system plus 2 removable fold outs featuring clear vinyl, color coded pockets. The adjustable foam dividers have been shortened in height slightly, to lessen the depth of the base section and to accommodate the two fold out sections.

The base of the hard case can easily accommodate up to 3 liters of IV solution and accessories, your IO device, as well as additional medications. This design allows for all base contents to be quickly and easily viewed upon the opening of the Case. No more digging through the base of your Hard Case searching for equipment.

Interior Dimensions: 18.43" x 14" x 7.62"



Neodymium magnets maintain 99.5% of their strength for up to 100 years!!

Item	Description
TT424	ALS Hard Case Complete, Orange
TT423	ALS Hard Case Complete, Gray
TT434	ALS Hard Case Complete, Yellow
TT321	Large Removable Padded Drug Case
TT742	Modular Foam Divider System

Complete ALS Hard Case includes TT321, TT742 and the Pelican 1550 Case.



THOMAS AIRWAY HARD CASE

Large Intubation Kit

The Thomas Airway Hard Case features a large removable Intubation Kit, located in the lid of the Case. The Intubation Kit can be removed and used by several medics in a multiple victim scenario, or remain secured to the lid and still fully functional. The Intubation Kit is secured to the lid by 6 neodymium magnets, which completely eliminates the need for Velcro on the outside of the kit.

The Intubation Kit is designed to hold multiple intubation handles, Macintosh and Miller blades, ET Tubes, Magill forceps, airways, RSI medications, and all other needed intubation accessories. The use of fluid-resistant heavy weight vinyl on the outside of the intubation kit makes decontamination easy.

Foam Divided Base

The base of the Thomas Airway Case consists of a modular, foam divider system plus 2 removable fold outs featuring clear vinyl, color coded pockets. The base of the Airway Case is designed to accommodate multiple adult and pediatric BVM's.

Item	Description
TT431	Airway Hard Case Complete, Orange
TT432	Airway Hard Case Complete, Gray
TT433	Airway Hard Case Complete, Yellow
TT321	Large Removable Padded Drug Case
TT742	Modular Foam Divider System

Complete Airway Hard Case includes TT341, TT742 and the Pelican 1550 Case.



Thomas BLS Hard Case BLS Lid Section

The Thomas BLS Hard Case features a removable lid section that contains 6 color coded pockets, designed to hold all of your BLS response equipment. The BLS features the same magnetic lid securing system as the other Thomas Hard Cases, and is made out of the same fluid-resistant material.

Foam Divided Base

The base of the Thomas BLS Hard Case consists of a modular, foam divider system plus 2 removable fold outs featuring clear vinyl, color coded pockets. This design allows for all base contents to be protected and quickly and easily viewed upon the opening of the Case. The base of the Thomas BLS Hard Case can hold all of the contents that the lid can accommodate, thus allowing for two EMT's to work on separate patients simultaneously from the same BLS Hard Case if needed.

Item	Description
TT428	BLS Hard Case Complete, Gray
TT429	BLS Hard Case Complete, Orange
TT430	BLS Hard Case Complete, Yellow
TT321	Large Removable Padded Drug Case
TT742	Modular Foam Divider System

Complete BLS Hard Case includes TT331, TT742 and the Pelican 1550 Case.

THOMAS BLS HARD CASE



ALL THOMAS HARD CASE INSERTS ARE DESIGNED FOR USE IN THE PELICAN 1550 OR EQUIVALENT SIZED CASE.



THOMAS BARIATRIC TRANSFER FLAT

The Thomas Transfer Flat is unique in that it may be used with or without a backboard.

- Backboard can quickly be attached to the center of the Thomas Flat.
- Ten outside, pre-molded support handles allow for even distribution of carrying and a comfortable grip.
- Heavy-duty vinyl construction is easily cleaned with soap and water, and comes with a durable storage bag.



Specifications:

Length: 72", Width 46"

Maximum Weight Capacity: 1,000 lbs.

Operators: 2 – 10

Item	Description
THS200	Bariatric Transfer Flat

Backboard not included.

THOMAS HANDLES

For EMS professionals, most back injuries occur while lifting.

The Thomas Handle is designed to reduce the amount of bending when lifting a backboard by adding approximately 12 inches to the lifting point, thus lessening back strain, eliminating awkward lifting angles, and minimizing abrasions on the hands and knuckles.



Key features of the Thomas Handles:

- Attach to any backboard
- Durable 1" nylon webbing and a rubberized, pre-molded handle with a strong non-slip grip
- Adjustable to fit EMS professionals of all sizes
- In-house custom embroidery to ensure identification



Before



After



Item	Description
THS810	Thomas Handles (Set of 4)



MCI MAN™ & MCI PED™

The Thomas MCI Man™ and MCI Ped™ are a smart, efficient way to help you conduct your MCI training and drills. These durable, inflatable training mannequins save money and time while significantly reducing the liability of conducting mass-casualty incident drills.

Advantages of MCI Man and MCI Ped

- The MCI Man and MCI Ped are always available and never call in sick
- The MCI Man and MCI Ped inflate in seconds so drill preparation is quick and efficient
- The MCI Man and MCI Ped can be used in the harshest of weather environments, and over an extended period of time
- The MCI Ped simulates a child involved in a mass casualty incident, which is difficult to do with live volunteers
- The MCI Man and MCI Ped are economical and reusable

Features of MCI Man™ and MCI Ped™:

- Clear chest pocket contains over 40 pre-scripted mass casualty injury scenarios*
- Compliant with JCAHO standards
- Available in adult and pediatric sizes
- Durable plastic material resists punctures
- Quick inflation / deflation
- Sandbags in feet keep mannequins in place
- Grommets on shoulders allow for tie-down
- Store away easily for re-use



Great for Decon Training!



Dimensions:

MCI Man™; 5'7" (170cm) 1.5 lb

MCI Ped™; 2'6" (36cm) 3 lbs

Item	Description
THS600	MCI Man™
THS650	MCI Ped™9
THS690	Turbo Pump

*Download pre-scripted mass casualty scenarios at www.thomasems.com.

THOMAS TRIAGE PACK

A MUST FOR MASS CASUALTY INCIDENT AND TRAINING SCENARIOS!!

An economical triage pack designed around the START (Simple Triage and Rapid Treatment) system, plus two additional color tape rolls for WMD (contaminated patients and patients treated with an antidote).

The pack also includes:

- Trauma shears
- N95 Mask (one large, one medium)
- Antiseptic cleaning towelettes
- 2" cloth tape
- Penlight
- Sharpie pen
- Six rolls of identification flagging (red, yellow, black, blue, green, orange).



Additional triage and treatment items can be added to this spacious fanny or shoulder pack.

Item	Description
THS500	Thomas Triage Pack



CARDIO2GO™ HANDHELD EKG

Introducing the Cardio2Go Handheld EKG heart monitor!

The Cardio2Go Handheld EKG device reads a modified lead I rhythm anywhere instantly using patented dry-thumb receptors or wrist electrodes. Get on-the-spot 30-second analysis of:

- Heart Rate
- QRS duration
- ST elevation/depression

Now, you can identify heart arrhythmias before fatal rhythms occur. The Cardio2Go Handheld EKG records 30 seconds of modified EKG signal for each measurement. Vivid LCD screen instantly displays three parameter measurements: heart rate (HR), ST segment, and QRS interval. Get additional PR and QT/QTc analysis by simply downloading results to a laptop using software and USB cable provided. The EKG can then be emailed for emergency or specialized care - saving time and lives!

Patented dry-thumb electrodes and handheld design make Cardio2Go ideal for firefighter rehab, HAZMAT, and bike EMS. Cardio2Go comes with a padded Velcro cover, durable Pelican carrying case, and a 1-year limited manufacturer's warranty.



Specifications:	
Sampling Frequency	250 samples/sec
Measurement Time	30 seconds
Display	240 x 128 Dot-matrix LCD display
Input	Dry conduction electrodes and/or external auxiliary electrodes
Output	USB interface
Power Supply	1.5v (AAA) battery x 2
Size	124 x 78 x 22mm
Weight	150 g excluding battery
Storage Temperature	-4° ~ 122°F
Operating Temperature	50° ~ 104°F
Humidity	25% ~ 95%
Average HR	45 - 180 bpm
ST segment	-3 to +3 mm
QRS interval	< 0.20 sec



Item	Description
THS9119	Cardio2Go



Warranty and Repair

Thomas EMS prides itself on making the most durable EMS packs in the industry. With that said, even the highest quality zippers, hardware, and fabrics will need repair from time to time. Please contact us at 801-262-6503 prior to sending us any pack for repair. Some repairs may not require the packs be sent back to us, and we may be able to send the replacement items directly to you. However, if your pack does require repair at our facility, please follow this simple cleaning procedure:

- 1) Remove all equipment from the pack, as well as all accessory pouches or other modules that do not need repair.
- 2) Spray the pack with a pressure washer or thoroughly hand wash. **DO NOT** place the pack into a washing machine. The pack must be cleaned to ensure that the pack can be handled safely by our repairs department. A clean pack is also necessary to ensure that the pack does not gum up our sewing machines, and cause significant damage to our equipment.
- 3) Once the pack has been washed, please hang the pack to dry.
- 4) Box the pack up, and include all of your contact information (preferably on department letterhead), and clearly mark all areas of the pack needing repair.

Packs that sent to our facility for repair that are not cleaned, will have additional charges added to the repair cost and will be delayed.

Send all repair packs to:

Thomas EMS
3515 South 300 west #6
Salt Lake City, UT 84115
ATTN: Repairs



Thank you for your support of Thomas EMS over the past 25 years.



80 Minutes!
is the average time a patient spends on a backboard.

The Back Raft

The Back Raft is a low-cost, inflatable air mattress and spinal stabilization device that improves patient comfort and virtually eliminates the risk of pressure sores and other secondary injury during transport. The Back Raft inflates in seconds, filling the voids between the patient and the backboard, thus eliminating pressure points.

- The Back Raft fills voids between the patient and spineboard
- A must for Geriatric Patients
- The dual action pump makes inflation of the Back Raft fast and easy
- Allows for full function of the backboard
- Insulates patients during cold weather

Product Specifications:

- 100% Latex Free
- 100% X-ray translucent
- Durable PVC construction
- Compatible with 16" and 18" boards
- Compatible with all C.I.D.'s
- 10" x 12" x 1/2" packaged
- Pump sold separately
- Compatible with any cot or spineboard strapping system

Call us for a free
BACK RAFT
training video!
Available upon
request at
800-445-3640



The new easy on/off valve makes pressure control simple.

Three columns of air support the head and neck, reducing the pressure point on the back of the head while enhancing spinal immobilization.

Plastic straps loop around the head of any backboard and secure the head end of the Back Raft.

The Back Raft is fast and easy to apply. Once applied it can remain on the board while stored away on the ambulance.

Seven columns of air support the shoulders and lower back, reducing the pressure on critical pressure points.

An adhesive strip running along the bottom of the Back Raft secures the Back Raft to the board.



Item	Description
TTS100	Back Raft
TTS150	Back Raft Hand Pump

Thomas® EMS
Phone (800) 445-3640 • Fax (801) 268-9272
www.thomasems.com • info@thomasems.com
All rights reserved Thomas® EMS 2011

If you're not already using a Back Raft,
STUDIES SHOW your patients wish you would.