

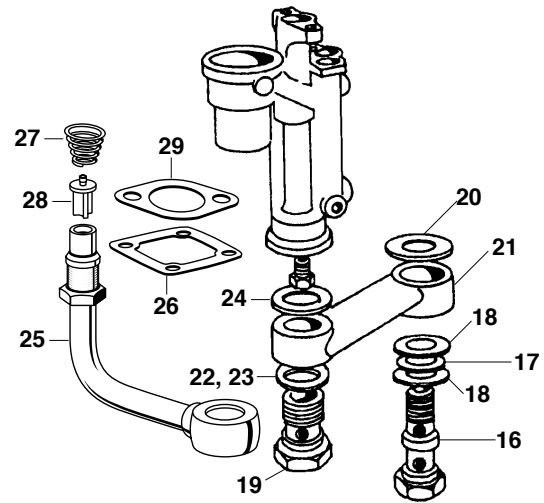
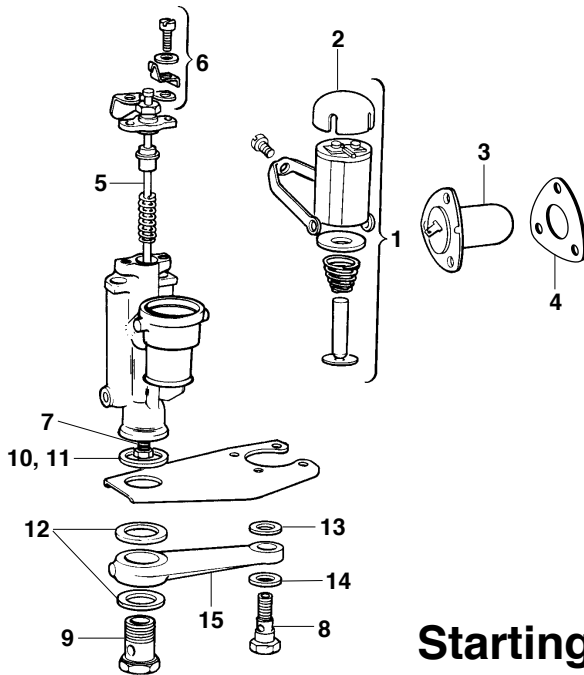
SU H6 1.75" XK-120, XK-140, MK VII

1. Overhaul Kits:
 Aftermarket: includes gaskets, seals, needle & seat, metering needle and washers for one carb _____ **03-0044**
 2. Genuine S.U. (Shown): As above but includes throttle shafts and plates plus far more hardware. Does not include metering needle; order separately; one kit per carburetor _____ **03-CRK240**

"Master" Carburetor Restoration Kit—One Kit Per Car

Include genuine SU rebuild kits, overflow pipes, floats, metering needles, Grose-type jets, dampers & springs, float filters, insulation blocks, dashpot & float chamber screws, damper oil and starting carburetor washers—everything you'll need to restore your carbs!

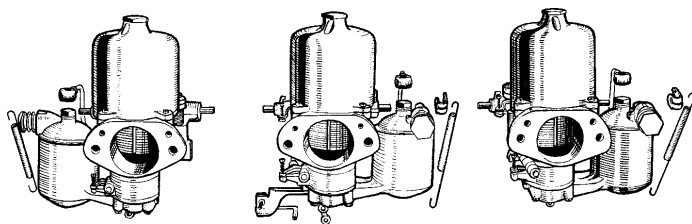
- | | | | |
|---|---------------------|--|---------------------|
| 3. "Master" Carb. Kit, XK-120, XK-140, MK VII _____ | 03-7000 | 27. Banjo Bolt, Stainless _____ | 03-AUC2698SS |
| 4. Metering Needle _____ | 03-W02 | 28. Float Filter (Includes Spring) _____ | 03-AUC2139 |
| 5. Main Jet _____ | 03-6000 | 29. Insulator Block _____ | C7461 |
| 6. Needle & Seat, standard _____ | 03-6151 | 30. Carb. Mounting Gaskets _____ | C2363 |
| 7. GROSE-Type Needle & Seat _____ | 03-6151G | 31. Piston Spring _____ | 03-AUC4387 |
| 8. Throttle Shaft _____ | 03-0018 | 32. Dashpot Screw _____ | 03-AUC2175 |
| 9. Throttle Shaft, .010" Oversize _____ | 03-0018-1 | 33. Jet Bearing _____ | 03-AUC4656 |
| 10. Throttle Disc _____ | 03-0020 | 34. Bolt, Chamber to Rear Carb _____ | 03-AUC1541 |
| 11. Shaft Screws _____ | 03-1358 | 35. Idle Screw & Spring _____ | 03-WZX980 |
| 12. Float _____ | 03-0027 | 36. Needle Securing Screw _____ | 03-AUC2468 |
| 13. Float Lever _____ | 03-1980 | 37. Flex shaft, 5/16" x 1.5" _____ | 03-AUC1236 |
| 14. Float Lever Pin _____ | 03-2000 | 38. Flex Shaft, 5/16" x 2.125" _____ | 03-AUC5079 |
| 15. Damper, Brass Top (original style) _____ | 03-AUC8102HB | 39. Flex Shaft Clamp _____ | 03-AUC1924 |
| 16. Damper, Plastic Top _____ | 03-8102 | 40. Jet Spring _____ | 03-AUC3248 |
| 17. Float Bowl Top Bolt _____ | 03-0028 | 41. Banjo Washer, Inlet, red fiber type _____ | 03-AUC2141 |
| 18. Overflow Pipe _____ | 03-0030 | 42. Banjo Washer, Inlet, soft alloy _____ | 03-AUC2141A |
| 19. Washer _____ | 03-AUC1557 | 43. Gasket to Air Filter _____ | C4475 |
| 20. Serrated Washer _____ | 03-AUC1928 | 44. Brass Banjo, Replacement _____ | 03-AUC8398D |
| 21. Jet Screw _____ | 03-0026 | 45. Carburetor Feed Pipe, XK-120, XK-140, MK VII _____ | C3810 |
| 22. Jet Cover _____ | 03-0025 | 46. Clip, on overflow pipes _____ | C3895 |
| 23. Chamber Lid, Front _____ | 03-AUE478 | | |
| 24. Chamber Lid, Rear _____ | 03-AUE479 | | |
| 25. Chamber Lid Gasket _____ | 03-AUC1147 | | |



Starting Carburetor

- | | | | |
|---|-------------|---|-------------|
| 1. Solenoid, all _____ | 03-0001 | 16. Banjo Bolt, Support Arm to Carburetor _____ | 03-AUC4641 |
| 2. Cover Only _____ | 03-AUC4795 | 17. Washer _____ | 03-AUC5026 |
| 3. Temperature Switch, all, includes gasket _____ | 03-0002 | 18. Fiber Washer, for AUC4641 _____ | 03-AUC5027 |
| 4. Gasket only for Temperature Switch, all _____ | C2475 | 19. Banjo Bolt, Choke to Chamber _____ | 03-AUC2698 |
| 5. Starting Carburetor Needle, all _____ | 03-AUC8129 | 20. Fiber Washer _____ | 03-AUC4751 |
| 6. Thermo Dust Shield Kit (includes two screws, two washers and one "finger clip"), all _____ | 03-WZX1284 | 21. Support Arm _____ | 03-AUC4758 |
| 7. Jet, all _____ | 03-AUC4759 | 22. Washer, red fiber _____ | 03-AUC2141 |
| Note: Numbers 8-14 do not apply to XK-120, XK-140, MK VII: | | | |
| 8. Banjo Bolt, Small _____ | 03-AUC2086 | 23. Washer, as above but soft alloy _____ | 03-AUC2141A |
| 9. Banjo Bolt, Large _____ | 03-AUC2698 | 24. Fiber Washer _____ | 03-AUC4753 |
| 10. Washer, red fiber _____ | 03-AUC2141 | 25. Starting Pipe, XK-120, MK VII A.2736 to A.9999 and B.1011 to B.2916 _____ | C2388 |
| 11. Washer, soft alloy _____ | 03-AUC2141A | 26. Gasket, starting pipe flange on manifold, XK-120, early MK VII _____ | C2381 |
| 12. Washer _____ | 03-AUC4753 | 27. Spring, Anti-Blow-Back Valve, on manifold, XK-140, MK VII B.2917 to N.4698 _____ | C7470 |
| 13. Washer, fiber _____ | 03-AUC2089 | 28. Anti-Blow-Back Valve, in starting pipe banjo bolt, XK-120 from engine W.2449-on; all XK-140, MK VII up to engine N.4698 _____ | C4204 |
| 14. Washer, alloy _____ | 03-AUC1557 | 29. Gasket, XK-140, later MK VII starting pipe _____ | C7469 |
| 15. Support Arm _____ | 03-AUC2087 | | |

Carburetors/Fuel System



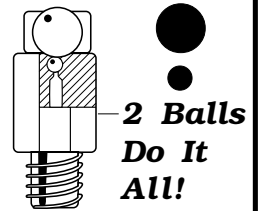
New S.U. HD-8 Carburetors

Back in production by S.U. in England, the original manufacturer. The real thing. For Series I E-Type.

- | | |
|-------------------------|------------|
| Front Carburetor _____ | 03-AUD112F |
| Center Carburetor _____ | 03-AUD112C |
| Rear Carburetor _____ | 03-AUD112R |

GROSE-Type Carburetor Jets

One weak point of S.U. carburetors is the stock needle and seat (or jet). They tend to leak, causing poor gas mileage, an overly rich mixture and, ultimately, a fire hazard. Grose-type Jets withstand high seat pressures and prevent hot weather percolation and flooding. We highly recommend upgrading to Grose-type jets.

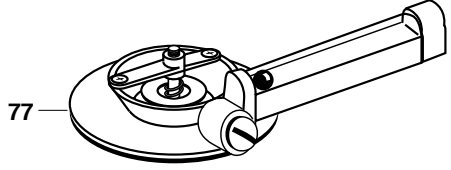
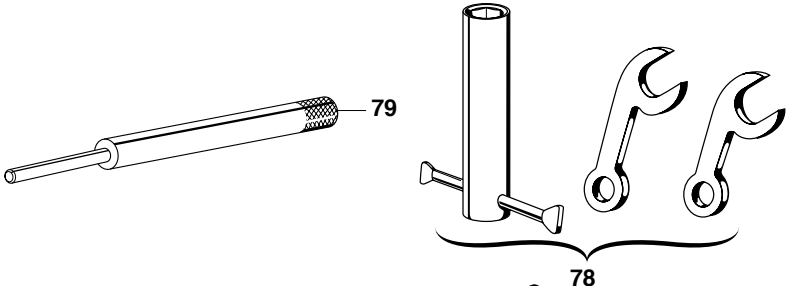
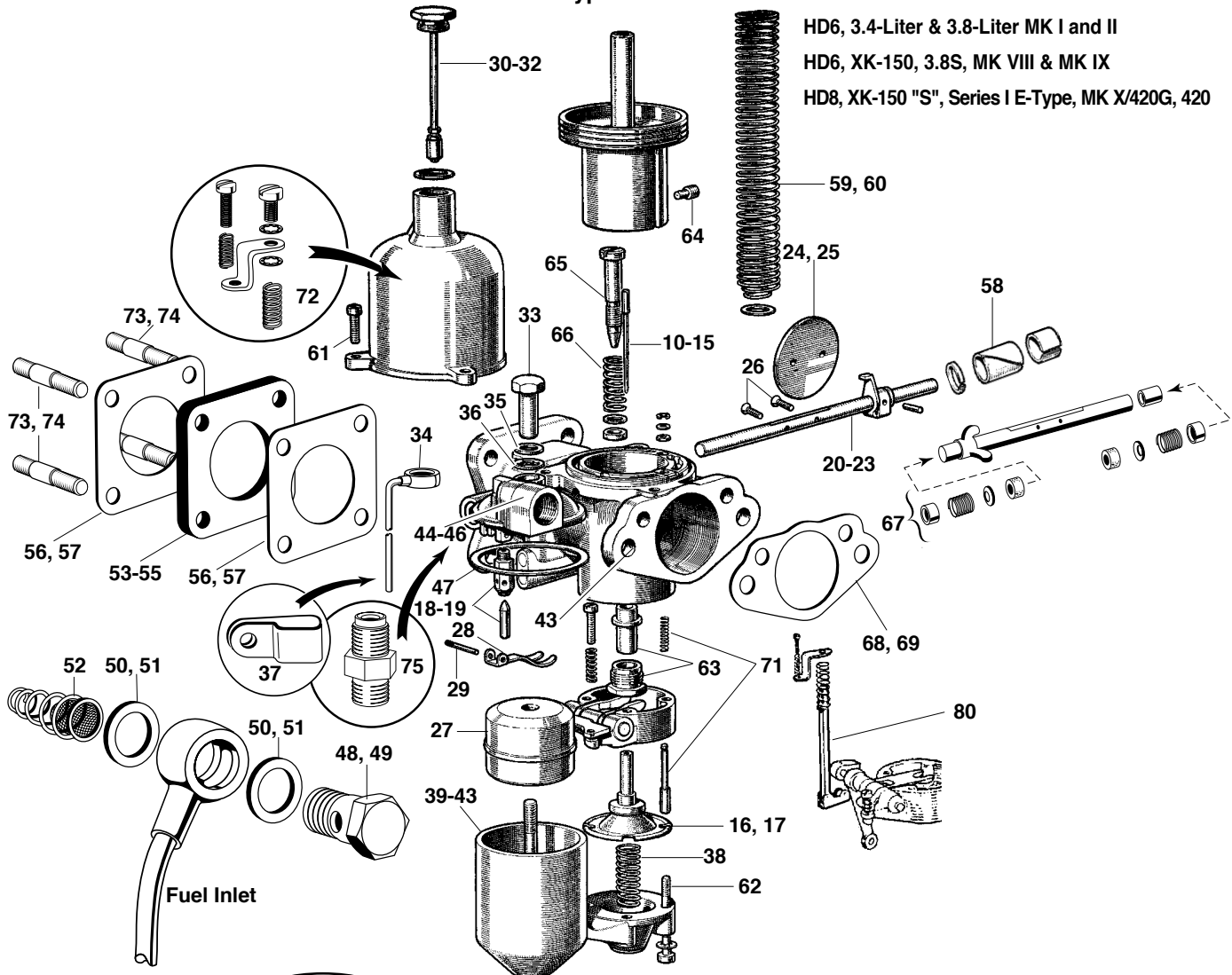


- | | |
|-------------------------------------|------------|
| For standard S.U. carburetors _____ | 03-6151G |
| For racing S.U. carburetors _____ | 03-6151GHP |

"HD"-Type Carburetor

HD6, 3.4-Liter & 3.8-Liter MK I and II
 HD6, XK-150, 3.8S, MK VIII & MK IX
 HD8, XK-150 "S", Series I E-Type, MK X/420G, 420

Carburetors/Fuel System



Genuine Damper Oil

The correct oil for S.U. and Stromberg carburetors. Comes in a 125ml bottle. _____ 03-BDR125



Carburetors



"HD"-Type Carburetor

Overhaul Kits:

Aftermarket: Includes gaskets, seals, needle & seat, metering needle and washers for one carb.

- 1. HD6, 3.4-Liter & 3.8-Liter MK I and II _____ **03-0563**
- 2. HD6, XK-150, 3.8S, MK VIII & MK IX _____ **03-0204**
- 3. HD8, 3.8 and 4.2 E-Type (Shown) _____ **03-0524**
 HD8, XK-150 "S" with three carbs _____ **03-1525**
 HD8, 420, 420G, and MKX _____ **03-1625**

Genuine SU: As above but includes throttle shafts and plates plus far more hardware. Top quality components. Includes correct metering needle. One kit per carburetor required.

- 4. Genuine SU Kit, HD6 _____ **03-CRK217**
- 5. Genuine SU Kit, HD8 _____ **03-CRK216**

"Master" Carburetor Restoration Kits

Include genuine SU rebuild kits, overflow pipes, floats, metering needles, Grose-type jets, dampers, damper springs, float filters, insulation blocks, dashpot and float chamber screws, damper oil and starting carburetor washers where applicable—everything you'll need to restore your carburetors! **One kit required per car.**

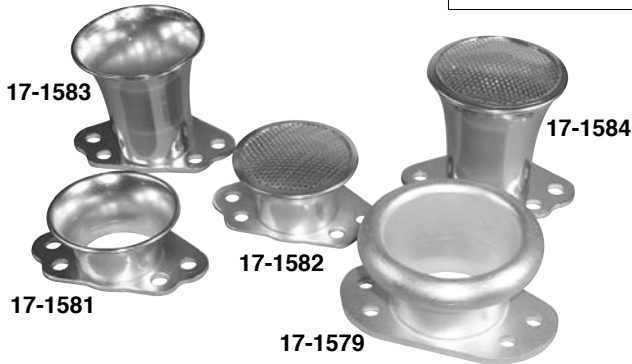
- 6. "Master" Carb. Kit, MK I, MK II _____ **03-7002**
- 7. "Master" Carb. Kit, XK-150, 3.8S, MK VIII, MK IX _____ **03-7004**
- 8. "Master" Carb. Kit, XK-150 "S" three-carburetor models _____ **03-7006**
- 9. "Master" Carb. Kit, Series I E-Type _____ **03-7008**
- 9A. "Master" Carb. Kit, 420 _____ **03-7014**
- 10. Metering Needle, HD6, MK I & MK II _____ **03-SC**
- 11. Metering Needle, HD6, XK-150, 3.8S, MK VIII & MK IX _____ **03-TS**
- 12. Metering Needle, HD8, standard (not XK-150 "S") _____ **03-UM**
- 13. Metering Needle, HD8, high performance (not XK-150 "S") _____ **03-UVR**
- 14. Metering Needle, HD8, high altitude (not XK-150 "S") _____ **03-UC**
- 15. Metering Needle, HD8, XK-150 "S" _____ **03-UE**
- 16. Main Jet, HD6 _____ **03-6006**
- 17. Main Jet, HD8 _____ **03-6007**
- 18. Needle & Seat, standard _____ **03-6151**
- 19. GROSE-type Needle & Seat _____ **03-6151G**
- 20. Throttle Shaft, HD6 _____ **03-0018**
- 21. Throttle Shaft, HD6, .010" oversize, _____ **03-0018-1**
- 22. Throttle Shaft, HD8 _____ **03-0019**
- 23. Throttle Shaft, HD8, .010" oversize _____ **03-0019-1**
- 24. Throttle Disc, HD6 _____ **03-0020**
- 25. Throttle Disc, HD8 _____ **03-0021**
- 26. Screw, Throttle Shaft _____ **03-1358**
- 27. Float _____ **03-0027**
- 28. Float Lever _____ **03-1980**
- 29. Float Lever Pin _____ **03-2000**
- 30. Damper, Brass Top, HD6 _____ **03-AUC8102HB**
- 31. Damper, HD6, Plastic Top _____ **03-8102**
- 32. Damper, HD8, Plastic Top _____ **03-8115**
- 33. Float Bowl Top Bolt (through overflow pipe) _____ **03-0028**
- 34. Overflow Pipe (bend to desired shape) _____ **03-0030**
- 35. Washer, top of overflow pipe _____ **03-AUC1557**
- 36. Serrated Washer, bottom of overflow pipe _____ **03-AUC1928**
- 37. Clip on Overflow Pipes, E-Type _____ **C14090**

- 38. Jet Spring _____ **03-AUC2006**
- 39. Float Chamber, Front, HD6 _____ **03-AUC2088**
- 40. Float Chamber, Front, HD8 without starting carb. _____ **03-AUC2009**
- 41. Float Chamber, Front, HD8 with starting carb. _____ **03-AUC2088**
- 42. Float Chamber, Middle, HD8 3-carb _____ **03-AUC2009**
- 43. Float Chamber, Rear, all _____ **03-AUC2009**
- 44. Chamber Lid, Front _____ **03-AUE478**
- 45. Chamber Lid, Center _____ **03-AUE478**
- 46. Chamber Lid, Rear _____ **03-AUE479**
- 47. Chamber Lid Gasket _____ **03-AUC1147**
- 48. Banjo Bolt, Fuel Inlet _____ **03-AUC2698**
- 49. Banjo Bolt, Stainless _____ **03-AUC2698SS**
- 50. Washer, Red Fiber _____ **03-AUC2141**
- 51. Washer, as above but soft alloy _____ **03-AUC2141A**
- 52. Float Filter (Includes Spring) _____ **03-AUC2139**
- 53. Insulator Block, HD6 _____ **C7461**
- 54. Insulator Block, HD8, not E-Type or 420G _____ **C33059**
- 55. Insulator Block, HD8, E-Type only _____ **C17413**
- 56. Mounting Gasket, HD6, either side of insul. block _____ **C2363**
- 57. Mounting Gasket, HD8, either side of insul. block _____ **C7221**
- 58. Teflon Throttle Bushing, later HD8, each _____ **03-AUD2424**
- 59. Piston Spring, HD6 _____ **03-AUC4387**
- 60. Piston Spring, HD8 _____ **03-AUC2107**
- 61. Dashpot Screw, four per carburetor _____ **03-AUC2175**
- 62. Float Chamber Screw, four per carburetor _____ **03-AUC2110**
- 63. Jet Bearing & Lock Nut Kit _____ **03-WZX1211**
- 64. Needle Securing Screw _____ **03-AUC2057**
- 65. Mixture Screw _____ **03-AUC2028**
- 66. Mixture Screw Spring _____ **03-AUC2027**
- 67. Spindle Seal Kit _____ **03-WZX994**

Note: Includes seals, springs, retainers and washers for one carb.

- 68. Gasket to Air Filter, HD6 _____ **C4475**
- 69. Gasket to Air Filter, HD8 _____ **C7164**
- 70. Brass Banjo, Replacement _____ **03-AUC8398D**
- 71. Piston Pin Lift Kit _____ **03-WZX1110**
- 72. Cam Shoe Kit _____ **03-WZX1235**
- 73. Stud, intake manifold to carburetors: MK VIII, MK IX, 3.8 E-Type, MK II, 340, XK-150, XK-150 "S", 3.4S, 3.8S, 420 (not 420G) _____ **C6570**
- 74. Stud, intake manifold to carburetors, 4.2 Series I E-Type _____ **C18232**
- 75. Vacuum Tube Fitting _____ **03-AUC4490/5100**
- 76. Damper Oil, Genuine SU, 125ml bottle _____ **03-BDR125**
- 77. Uni-Syn Carburetor Mixture Adjusting Tool. Far more accurate than even the most experienced ears, this simple tool is essential for properly balanced carburetors _____ **17-0114**
- 78. SU Tool Kit. Includes wrenches to suit both sizes of main jet adjusting nuts, and needle and seat tube wrench. _____ **03-WZX2002**
- 79. SU Jet Centering Tool. One of those simple but effective tools that's essential for properly tuned SUs _____ **17-0118**
- 80. Manual Choke Rod _____ **03-AUC8962**

Carburetors/Fuel System



Velocity Stacks for S.U. Carburetors

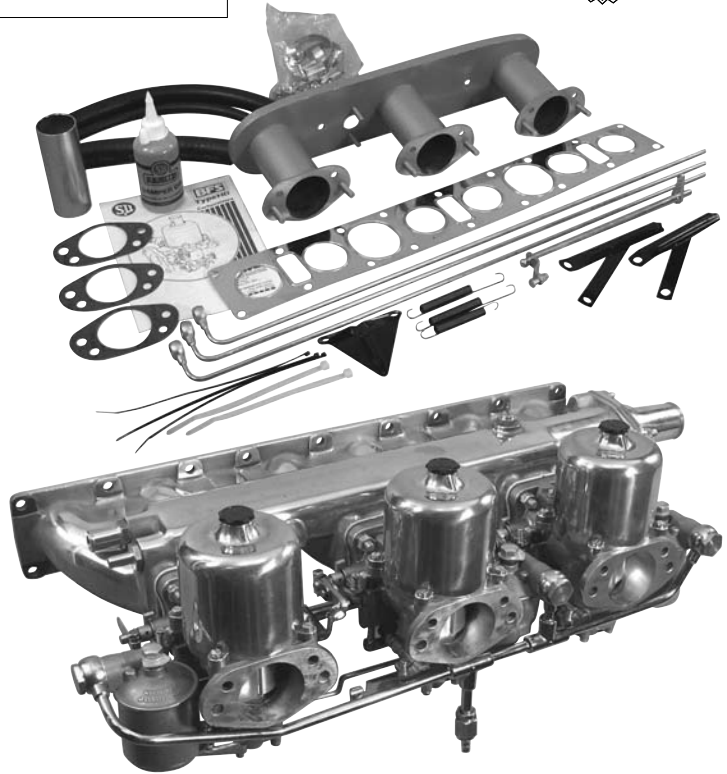
For 1-3/4" S.U. H6 or HD6 Carburetors:

Short, (1-1/2") without screen _____	17-1581
Short, (1-7/8") with screen _____	17-1582
Long, (2-3/4") without screen _____	17-1583
Long, (3") with screen _____	17-1584

For 2" S.U. HD8 Carburetors:

Short, (1-1/2") without screen _____	17-1575
Short, (1-7/8") with screen _____	17-1576
Long, (2-3/4") without screen _____	17-1577
Long, (3") with screen _____	17-1578

Premium Racing Velocity Stack. Heavy-gauge alloy with 3/16" base plates. 2" tall _____ 17-1579



4.2 Liter E-Type Stromberg-to-Triple S.U. Conversion Kit

With the popularity of Stromberg-to-S.U. conversions, the supply of used 2" S.U. carbs is decidedly tight. This kit includes virtually all you'll need and everything is brand new. Includes new carburetors, manifold and linkage—all the major components needed to convert to S.U.s

Conversion Kit _____	03-1000
Manifold Only _____	C24558

Carburetor Rebuilding by XKs UNLIMITED

If those S.U. or Stromberg carburetors look like more than you want to tackle, leave the job to the experts in our restoration shop. We rebuild carburetors to either "concours" or "street" specifications. Street carbs don't receive as much cosmetic detailing, but are treated to the same comprehensive mechanical restoration as concours carburetors.

Each carburetor is disassembled, thoroughly cleaned, inspected and reassembled with top-quality gaskets, seals, needle, seat and main jet. We also replace the throttle shafts and discs. That's the easy part. What sets our rebuilds apart is the details, like milling mating surfaces absolutely flat and replacing missing hardware. We have an extensive stock of genuine S.U. hardware, both new and used, so a missing part won't likely be a problem.

Carburetors are adjusted and ready to run with minimal adjustment. Concours rebuilds receive plated hardware and mirror-polished dashpots. We can also modify and configure carburetors for vintage racing. Pricing varies with condition and completeness and is per carburetor.

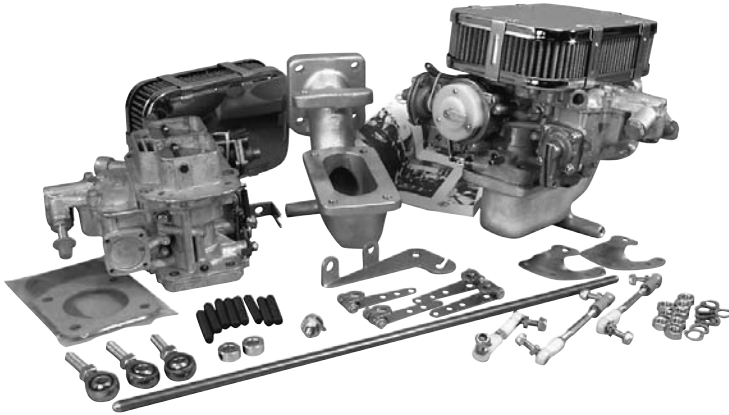
SU Street _____	03-3000
SU Concours _____	03-3001
Stromberg _____	03-3002



S.U. H-8 Sandcast Carburetors

An original racing option for the XK-120, XK-140 and C-Types, these excellent replicas are concours quality. They bolt to the stock manifold and use stock linkage (connecting linkage included). These carbs make a great set-up for vintage racing, C-Type replicas or just a fast street car. And, they look great.

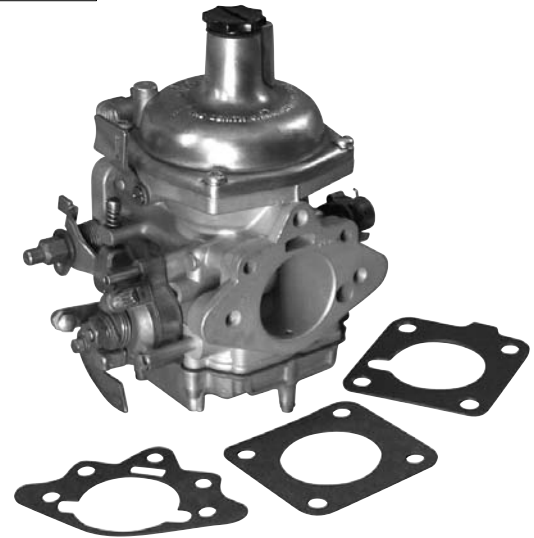
Sandcast Carburetor Kit _____	03-SUH-8
Rebuild Kit, each (does not include needle) _____	03-H8KIT
Metering Needle, each _____	03-VR
"Pancake" Air Filter, per pair _____	C8484
Grose-Type Jet, each _____	03-6888



XJ-6 Stromberg-to-Weber DGEV Carburetor Conversion Kit

This kit is new for XK engines and allows one to adapt modern style twin weber DGV carburetors directly to the stromberg manifold. Supplied with everything needed to make the conversion. Manifold adapters, carbs, linkage, gaskets and hardware. However, due to the many variations of XJ-6 manifolds and throttle linkages, some "ingenuity" may be required. Professional or skilled DIY installation recommended. _____ **17-1526**

Note: Not legal for use on pollution controlled vehicles.



Rebuilt Stromberg Carburetors

Please see the previous page for a complete description of our in-house carburetor rebuild services. In addition to these services, we also stock rebuilt V-12 E-Type Strombergs for exchange purchase. They are treated to the same meticulous rebuild.

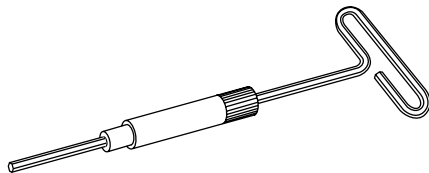
Left Rear V-12 E-Type Carburetor _____	C38880
Left Front V-12 E-Type Carburetor _____	C38881
Right Rear V-12 E-Type Carburetor _____	C38882
Right Front V-12 E-Type Carburetor _____	C38883

Carburetors/Fuel System



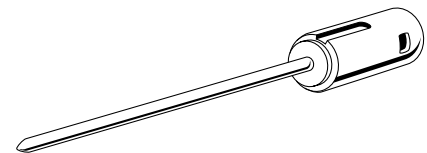
E-Type V-12 S.U. Conversion Kit

Finally! A replacement for the troublesome Zenith-Stromberg carburetors that were standard equipment on V-12 E-Types. This kit includes four new S.U. carbs and all linkage and fittings to convert your car. Improves drivability and performance! We've installed several of these kits in our shop with nary a problem and excellent results. _____ **03-FZX3062**



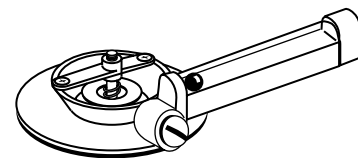
Stromberg Carburetor Mixture Adjusting Tool

By rotating the allen key, the needle is raised or lowered to richen or weaken the mixture, respectively. The outer barrel ensures the air valve won't rotate and potentially damage the main diaphragm. _____ **17-0120**



Stromberg Metering Needles

E-Type Series I & II, '68 to Early '71, non-adjustable type _____	03-B1E
E-Type Series II, Late '71, non-adjustable type _____	03-B1AR
E-Type Series III, Up to Engine 7S8178, adjustable type _____	03-B1BH
E-Type Series III, From Engine 7S8179, adjustable type _____	03-B1CQ
XJ-6 Series I, To Engine 7L10076, non-adjustable type _____	03-B1E
XJ-6 Series I, 7L10077 to 7L42594, non-adjustable type _____	03-B1AR
XJ-6 Series I, Engine 7L42595 - on, adjustable type _____	03-B1BT
XJ-6 Series II, To Engine 7L92806, adjustable type _____	03-B1CG
XJ-6 Series II, Engine 7L92807 to 8L14790, adjustable type _____	03-B2AZ
XJ-6 Series II, Engine 8L14791 - on, adjustable type _____	03-B2BC
XJ-12 Series I & II, USA and Canada cars, adjustable type _____	03-B1CK



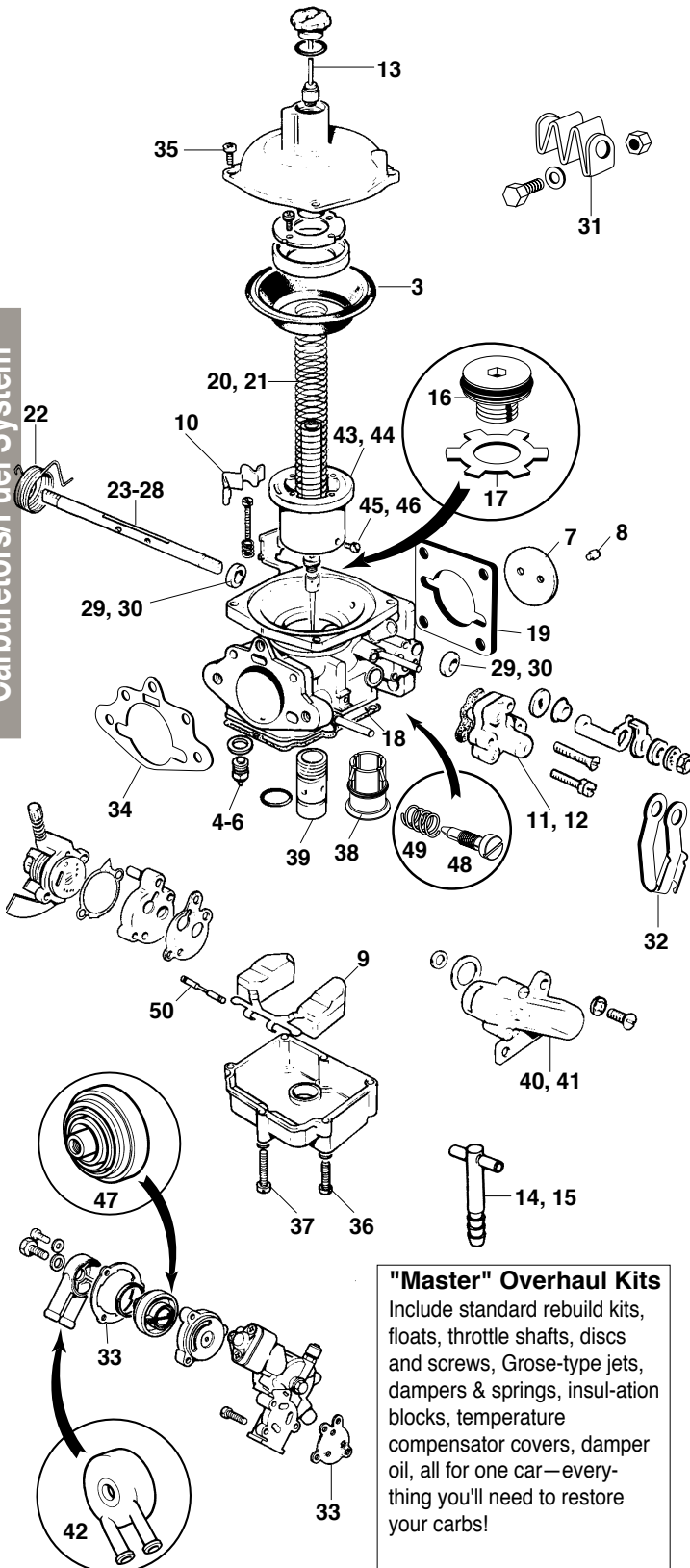
"Uni-Syn" Carburetor Synchronizer

Far more accurate than even the most experienced ears, this simple tool is essential for proper balancing of multiple carburetors. _____ **17-0114**

E-Type Series II & III, XJ-6 & XJ-12 Series I and Early Series II

Zenith/Stromberg Components

Carburetors/Fuel System



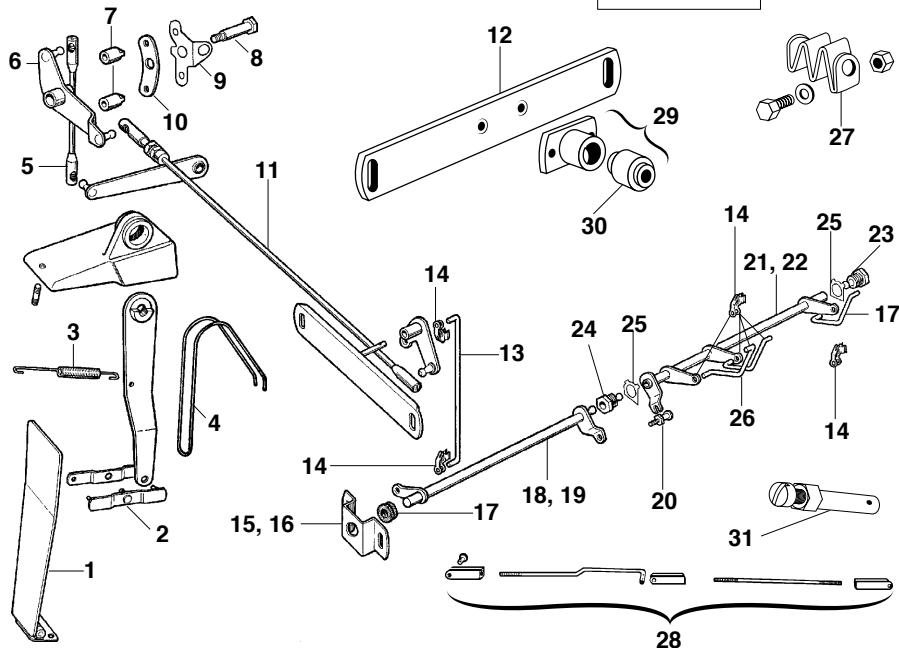
"Master" Overhaul Kits

Include standard rebuild kits, floats, throttle shafts, discs and screws, Grose-type jets, dampers & springs, insulation blocks, temperature compensator covers, damper oil, all for one car—everything you'll need to restore your carbs!

51. Ser. II E-Type _ 03-7010

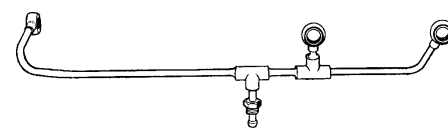
52. Ser. III E-Type _ 03-7012

Description	Six Cylinder	Twelve Cylinder
Overhaul Kit, each	1. 03-019K	2. 03-020K
Diaphragm	3. 03-8002	3. 03-8002
Needle & Seat, Standard	4. 03-6152	5. 03-6153
GROSE Needle & Seat	6. 03-6152G	6. 03-6152G
Throttle Disc	7. 03-6174	7. 03-6174
Throttle Disc Screw	8. 03-010351	8. 03-010351
Float	9. 03-6175	9. 03-6175
Cable Clip	10. 03-6180	10. 03-6180
Bypass Diaphragm Kit (Not included in carburetor rebuild kits.)	11. 03-64-014A	11. 03-64-014A
Bypass Valve Complete	12. 03-B23231	12. 03-B23231
Damper	13. 03-8043	13. 03-8043
Fuel "T" between carbs	14. C36893	15. C35649
Needle Adjusting Screw	16. 03-519046	16. 03-519046
Clip for Adjusting Screw	17. 03-B19995	17. 03-B19995
Float Cover Gasket	18. 03-BLM218536	18. 03-BLM218536
Carb. Insulation Block	19. C33060	19. C33060
Note: For Series II E-Type insulator use C28697.		
Piston Spring	20. JA-12335	21. JA-606792A
Return Spring	22. JA-12844	22. JA-12844
Note: For Series I XJ-6 after engine 8L.42595. Not for Series II XJ-6 with water choke (engine 8L.14791-on).		
Throttle Shafts:		
Front, Six Cylinder	23. 03-6172	N/A
Rear, Six Cylinder	24. 03-6171	N/A
Six Cylinder with water choke (steel shaft):		
Front Shaft	25. JA-AAU1828	N/A
Rear Shaft	26. JA-AAU1831	N/A
Right Front, V-12	N/A	27. 03-6171
All other locations, V-12	N/A	28. 03-6173
Throttle Shaft Seal Only	29. 03-8163	29. 03-8163
Seal & Brass Retainer	30. 03-B18032	30. 03-B18032
Shaft Coupling Clip	31. C30342	N/A
Linkage Clip, later XJ6	32. C13824	N/A
Water Choke Gasket Kit	33. 03-6185	N/A
Note: Included in rebuild kit; fitted to XJ-6 Series II from 8L.14791-on.		
Gasket to Air Cleaner	34. C28721	34. C28721
Screw Kit, per carb (Includes four screws and four washers.)	35. 03-019654P	35. 03-019654P
Short Screw, 2 rq'd	36. 03-B25435	36. 03-B25435
Long Screw, 4 rq'd	37. 03-B19224	37. 03-B19224
Plastic Cover W/ O-Ring	38. 03-B20767	38. 03-B20767
Thread-In Brass Cover	39. 03-B17916	39. 03-B17916
Temp. Compensator Assy.	40. 03-B19999	40. 03-B19999
Compensator Cover only	41. 03-B17933P	41. 03-B17933P
Water Choke Outlet	42. JA-AAU1823	N/A
Piston, Non-Adjust. Type	43. 03-3004	43. 03-3004
Piston, Adjustable Type	44. 03-3003	44. 03-3003
Screw, adjustable needle	45. 03-B20108	45. 03-B20108
Screw, non-adjust. needle	46. 03-019673	46. 03-019673
Heat Mass	47. JA-AAU1834	N/A
Brass Trimmer Screw	48. 03-B18479	48. 03-B18479
Trimmer Screw Spring	49. 03-B18480	49. 03-B18480
Float Pivot Pin	50. 03-B18613	50. 03-B18613



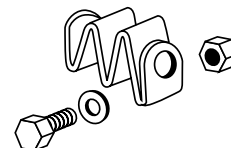
E-Type Throttle Linkage Components

- | | | |
|--|-------|-------------------|
| 1. Throttle Pedal Assembly, Series I and II (not 2+2) | _____ | C18467 |
| 2. Link (pair), Series I and II | _____ | C18478 |
| 3. Throttle Pedal Return Spring, Series I (not 2+2) | _____ | C14366 |
| 4. Throttle Pedal Return Spring, Series I & II 2+2 | _____ | C26564 |
| 5. Drop Link Assembly, Series I and II | _____ | C19053 |
| 6. Fulcrum Lever Assembly | _____ | C17859 |
| 7. Eccentric Sleeve for Fulcrum Lever Stop Adjustment (2 Req'd; sold per each) | _____ | C18275 |
| 8. Pivot Pin for Fulcrum Lever | _____ | C18276 |
| 9. Tab Washer, Locking Pivot Pin and Bolts | _____ | C18483 |
| 10. Stiffening Plate, on Pivot Pin and Bolts | _____ | C18274 |
| 11. Cross Shaft Assembly, Series I and II | _____ | C17870 |
| 12. Firewall Bracket, 3.8-Liter only | _____ | C18548 |
| 13. Linkage Rod, all 4.2 Series I; Series II 2+2 only | _____ | C24747 |
| 14. Clip, Series I (8 required) Series II (6 required) | _____ | C13824 |
| 15. Bracket, Series I 4.2, 2-3/4" bolt spread (supplied w/ bushing) | _____ | C24746 |
| 16. Bracket, 1-7/8" bolt spread (Series II FHC/OTS from engine 7R1838, Series II 2+2 from engine 7R.35330) (supplied w/ bush.) | _____ | C31069 |
| 17. Bushing Only for Bracket | _____ | C34388 |
| 18. Rear Slave Shaft, Series I 4.2, with S.U Carbs | _____ | C24742 |
| 19. Rear Slave Shaft, 3.8, engine R.2934-on | _____ | C18937 |
| 20. Pin and Lock Nut, Series I 4.2, Series II | _____ | C19450 |
| 21. Front Slave Shaft, Series I 4.2, with S.U Carbs | _____ | C24741 |
| 22. Front Slave Shaft, 3.8, engine R.2934-on | _____ | C18935 |
| 23. Adaptor, front, Series I | _____ | C18941 |
| 24. Adaptor, rear, Series I | _____ | C18942 |
| 25. Lock Tabs, for Adaptors (2 required) | _____ | C18943 |
| 26. Control Rod, Series I 4.2 (3 required), with S.U Carbs | _____ | C25148 |
| 27. Coupling Clip, between carburetors, Series II, with Zenith Carbs | _____ | C30342 |
| 28. Choke Linkage Assembly, Series I, with S.U Carbs | _____ | 03-AUE1000 |
| 29. Housing Assembly with Bushing, 3.8 only | _____ | C18545 |
| 30. Bushing only, 3.8 | _____ | C13605 |
| 31. Choke Trunion | _____ | C18832 |



Carburetor Fuel Rails

- | | | |
|--|-------|---------------|
| XK-120, 140, MK VII | _____ | C3810 |
| XK-150 early (inlet points down) | _____ | C12812 |
| XK-150 late (inlet points forward) | _____ | C15868 |
| E-Type Series I; XK-150 "S" OTS from 832076, FHC from 836187, DHC from 838246. | _____ | C15823 |



Dual Carburetor Coupling Assembly

Fits all dual carburetor cars from XK-120 to Series II XJ-6. _____ **C30342**

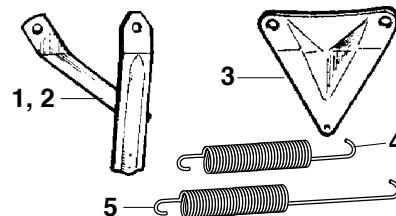
MK II Throttle Pedal Shaft "Roller"

There were many throttle pedal arrangements on MK IIs. Many used this nylon "roller." **C12486**



Accelerator Pedal Felt Bushings

For XK-120 and 140. **C3479**
(Not XK-140 Fixed Head Coupe.)



E-Type Return Spring Brackets "Y" Brackets:

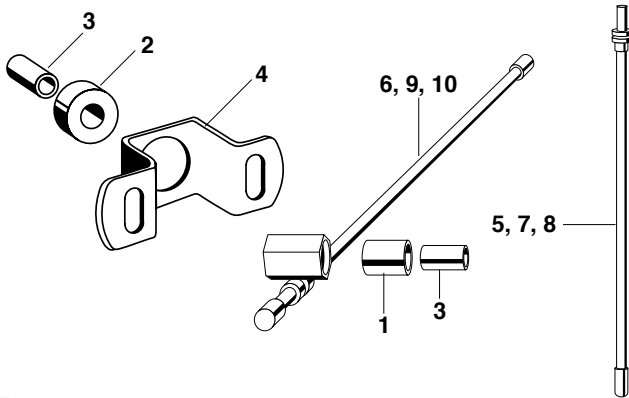
- | | | |
|--|-------|---------------|
| 1. 3.8 (3 req'd for all locations); Ser. I 4.2 center carb. only | _____ | C24736 |
| 2. 4.2 front carb | _____ | C15963 |
| 3. Triangular Bracket, on rear carburetor of Ser. I 4.2 E-Type | _____ | C24737 |
| 4. Return Spring | _____ | C14366 |
| 5. Return Spring | _____ | C15587 |

(See next page for spring applications.)



Throttle Pedestal Spring

V-12 E-Type. _____ **C34301**

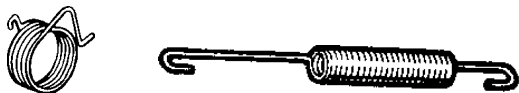


Throttle Linkage Components Manual Transmission XKs and Early Sedans

1. Throttle Rod Bushing: XK-120, MK 7 to VIN 736655 _____ **C3476**
2. Throttle Rod Grommet: XK-140, XK-150, MK 7 from VIN 736656, MK 8, MK 9 _____ **C8016**
3. Brass Bush in Throttle Rod Grommet: XK-120, XK-140, XK-150 MK 7, 8 & 9 _____ **C3477**
4. Throttle Rod Grommet Bracket: XK-140, MK 7 from VIN 736656 MK 8, MK 9 _____ **C8014**

Throttle Rods:

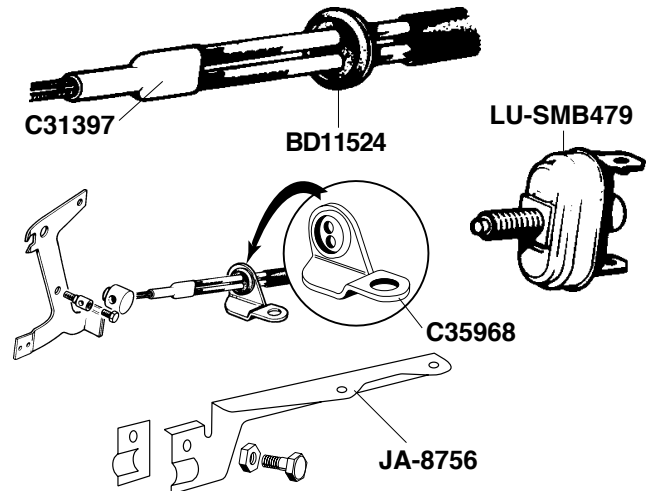
5. XK-120 Vertical _____ **C3710**
6. XK120 Horizontal _____ **C3765**
7. XK-140 OTS & DHC Vertical _____ **C7970**
8. XK-140 FHC Vertical _____ **C9951**
9. XK-140 OTS & DHC Horizontal _____ **C3765**
10. XK-140 FHC Horizontal _____ **C8853**



Carburetor Return Springs

Application	Front	Center	Rear
XK-120	N/A	N/A	JA-310
XK-140	JA-310	N/A	JA-310
MK VII, MK VIII	JA-310	N/A	JA-310
XK-150, MK IX	C14366SS	N/A	C14366SS
XK-150S	C14366SS	C14366SS	C14366SS
MK I, MK II, 340	C14366SS	N/A	C13355
3.8S, 420	C14366SS	N/A	C13355
E-Type 3.8, MK X, 420G	C14366SS	C14366SS	C14366SS
E-Type 4.2 Series I	C14366SS	C14366SS	C15587
E-Type Series II	JA-12844	N/A	JA-12844
E-Type Series III, XJ-12	JA-12844	N/A	JA-12844
XJ-6 Series I*** and II	JA-12844	N/A	JA-12844

Note: ***XJ-6 Series I from engine 7L.42595-on.



Choke Cables and Components

E-Type Series I, 3.8 & 4.2 Liter, 1961 - 1968 With S.U. Carbs:

- Cable and casing _____ **C18125-6PR**
 Cable End Clamp _____ **C18832**
 Choke Cable End Bracket Assembly _____ **JA-8756**

E-Type Series 1.5 and II, All With Stromberg Carbs:

- 2+2, cable and casing _____ **C31397**
 Roadster or Coupe, cable and casing _____ **C29043**
 Grommet, cable through dash, Series I (1 req.) _____ **BD11524**
 Grommet, cables through dash, Series II (2 req.) _____ **C16393**

E-Type Series III, 1971 - 1974:

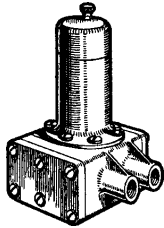
- Cable assembly _____ **C34854**
 Grommet, cables through dash (3 or 4 req.) _____ **BD33318**
 Choke cable grommet bracket _____ **C35968**
 Choke Warning Light Switch, All E-Types _____ **LU-SMB479**

XJ-6 Series I & II: Cable, to VIN 2T54778 _____ **C31387**

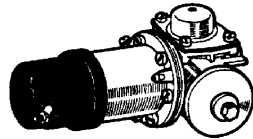
XJ-12 Series I & II: Cable, to VIN 2R53902 _____ **C34854**

Accelerator Cables

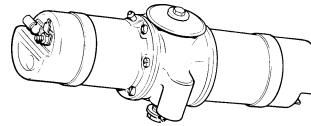
- E-Type Series III - Manual Trans, '71 - '74 _____ **C34441-2**
 E-Type Series III - Auto. Trans, '71 - '74 _____ **C38816-3**
 XJ-6 Series I, '69 - '73 _____ **C31821**
 XJ-6 Series II, 1974, To Eng.# 7L83800
 32" long, has tab for kickdown switch _____ **C35387-1**
 XJ-6 Series II, '75 - '79 1/2, With Carburetors
 From Eng.# 7L83801 to 8L14790 _____ **C31821**
 From Eng.# 8L14791 - On _____ **C31821-1**
 XJ-6 Series II & III, With Fuel injection _____ **JA-CBC1905-2**
 XJ-12 Series I & II, '73 - '79 1/2 _____ **JA-CBC1915-1**
 XJ-S, '76 - '80 _____ **JA-CAC3072-1**
 XJ-S H.E., '82 - '88 _____ **JA-CBC1910-1**
 XJ-40 3.6-Liter, 1988 and 1989 _____ **JA-CBC2619**
 XJ-40 4.0-Liter, 1990-1994 _____ **JA-CBC8353**



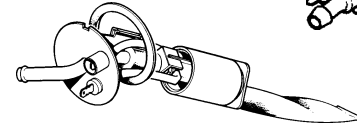
03-AUA152



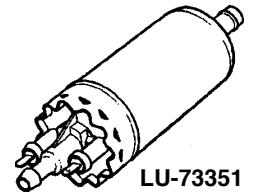
03-AZX1318EP
03-AZX1318EN



03-AZX1405EN



JA-CAC3551
JA-CAC3552



LU-73351

1. **XK-120, 140, 150, MK VII, MK VIII, MK IX, MK I, MK II, 3.8S:**
New "square body" SU Pointless Electronic Fuel Pump, Positive Ground _____ **03-AUA152**

Note: A less expensive replacement for the square-body pump is 03-AZX1318EP, also an SU pointless pump; or 03-0550M, a plastic-bodied, solid-state, aftermarket pump that is not polarity sensitive.

Rebuild Kits for Square Body Fuel Pumps (points type only):
Pumps with 2.375" coil housing _____ **03-EPK800**
Pumps with 3.0" coil housing _____ **03-EPK805**

2. **3.8 E-Type**, submerged-type pump _____ **C19919**

Note: This is a modern submersible pump attached to an original-type top plate; it's far superior to the original Lucas pump.

S.U. pump for converted cars _____ **03-AZX1318EP**

Note: Some 3.8 E-Types have been converted to the later SU external pump; use this pump as a replacement.

3. **4.2 E-Type, 420, 4.2 MK X, 420G**, SU Pointless Electronic Fuel Pump, Negative Ground _____ **03-AZX1307EN**
Rebuild kit for AZX1307 (points-type only) _____ **03-EPK300**

4. **V-12 E-Type**, SU Pointless Electronic Fuel Pump **03-AZX1405EN**
Rebuild kit for AZX1405 (points type only), two req'd _____ **03-EPK200**

5. **XJ-6, 1969-1975:**
SU Pointless Electronic Fuel Pump _____ **03-AZX1307EN**
Rebuild Kit for AZX1307 (points type only) _____ **03-EPK300**

6. **XJ-6 Series II With Submerged Pumps:**
RH, Factory Original _____ **JA-CAC3551**
LH, Factory Original _____ **JA-CAC3552**
Aftermarket, fits LH or RH _____ **03-0556**

7. **Fuel Injected XJ-6 Series II and III, 1978-1987:**
New pump _____ **LU-73351**
Rebuilt Pump _____ **LU-73351/RB**

8. **XJ-6 (XJ-40) 1988 through 1990 (VIN 629285), external**
New Pump _____ **JA-EBC11580**
Rebuilt Pump _____ **JA-EBC11580/RB**

XJ-6 (XJ-40) VIN 629286 to VIN 679206, submerged:
Factory Update Fuel Pump Kit _____ **03-1200**
Aftermarket Replacement Pump _____ **JA-EBC11365X**

XJ-6 (XJ-40), VIN 679207-on, submerged:
New Pump _____ **JA-NMD6613AA**

9. **XJ-6, XJR (X300) 1996-1997**
Factory Update Fuel Pump Kit _____ **03-1201**
Aftermarket Replacement Pump _____ **JA-JLM12204/X**

10. **XJ-12, Carbureted**
SU Pointless Electronic Fuel Pump, two req'd _____ **03-AZX1405EN**
Rebuild kit for AZX1405 (points type only),

two required per pump, _____ **03-EPK200**
Aftermarket plastic-body pointless pump _____ **03-0055M**

11. **Fuel Injected XJ-12 Series II, 1976-1978:**
New Pump _____ **LU-73144**

12. XJ-12 6.0 (XJ-40 Body), RH New Pump _____ **JA-NMD6013BA**
XJ-12 6.0 (XJ-40 Body), LH New Pump _____ **JA-NMD6013CA**

13. XJ-12 6.0 (X300 Body), one required, New Pump _____ **JA-JLM12204**

14. **XJ-S:** XJ-S, 1976-1979.5, New Pump _____ **LU-73144**
XJ-S H.E., 1979.5 through 1991, New Pump _____ **LU-73351**
Rebuilt Pump _____ **LU-73351/RB**

15. XJ-S 4.0 & 5.3 Coupe, Factory Update Fuel Pump Kit _____ **03-1200**
XJ-S 4.0 & 5.3 Coupe,

Aftermarket Replacement Pump _____ **JA-EBC11365/ X**
XJ-S 4.0 Coupe, VIN 189046-194774 _____ **JA-NMD6013AA**

XJ-S 4.0 Coupe, VIN 194775-on _____ **03-1201**

XJ-S 6.0 Coupe, 188105 to 194774, RH _____ **JA-NMD6013CA**

XJ-S 6.0 Coupe, 188105 to 194774, LH _____ **JA-NMD6013BA**

XJ-S 6.0 Coupe, VIN 194775-on Factory Update Fuel Pump Kit _____ **03-1201**

XJ-S 6.0 Coupe, VIN 194775-on, Aftermarket Replacement Pump _____ **JA-JLM12204/X**

XJ-S 4.0 & 5.3 Convertible, to VIN 188104 _____ **JA-EBC11365**

XJ-S 4.0 & 5.3 Convertible, VIN 188105-194774 _____ **JA-NMB6013AA**

XJ-S 6.0 Convertible, to VIN 194774, RH _____ **JA-NMD6013CA**

XJ-S 6.0 Convertible, to VIN 194774, LH _____ **JA-NMD6013BA**

XJ-S 6.0 Convertible VIN 194775-on, Factory Update Fuel Pump Kit _____ **03-1201**

XJ-S 6.0 Convertible VIN 194775-on, Aftermarket Replacement Pump _____ **JA-JLM12204/X**

16. **XK-8, XKR, 1998-on**
4.0-liter XK8 to VIN 0224686
Factory Update Fuel Pump Kit _____ **03-1201**
Aftermarket Replacement Pump _____ **JA-JLM12240/X**

4.0-liter XK8 & XKR VIN 024687-031302 _____ **JA-JLM20529**

4.0-liter XK8 & XKR, 031303-on _____ **JA-JLM20756**

4.2-liter XK-8, New _____ **JA-C2N-1146**

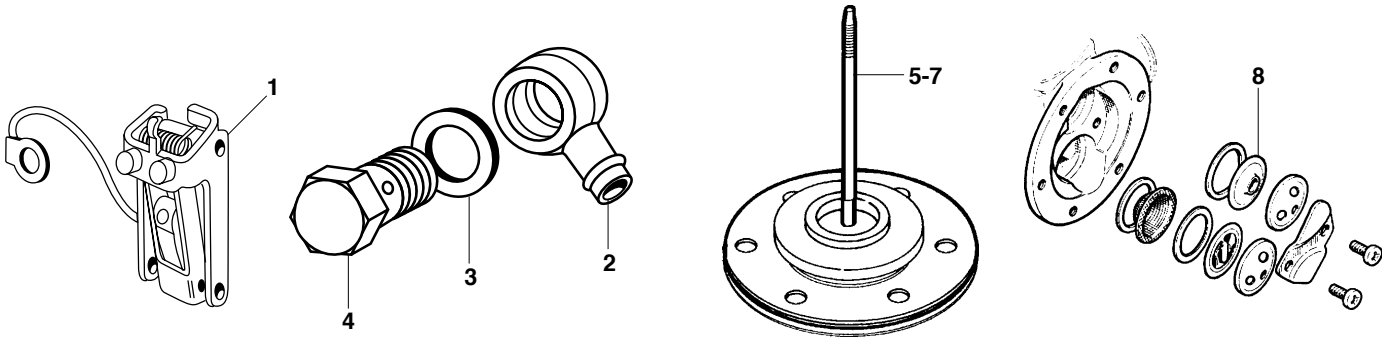
4.2-liter XK-R, New _____ **JA-C2N-1147**

17. XJ8, XJR, 1998 & 1999 _____ **JA-JLM20529**

XJ8, XJR, 2000-2003 _____ **JA-JLM20756**

18. S-Type, 2000-on _____ **JA-XR8-1586**

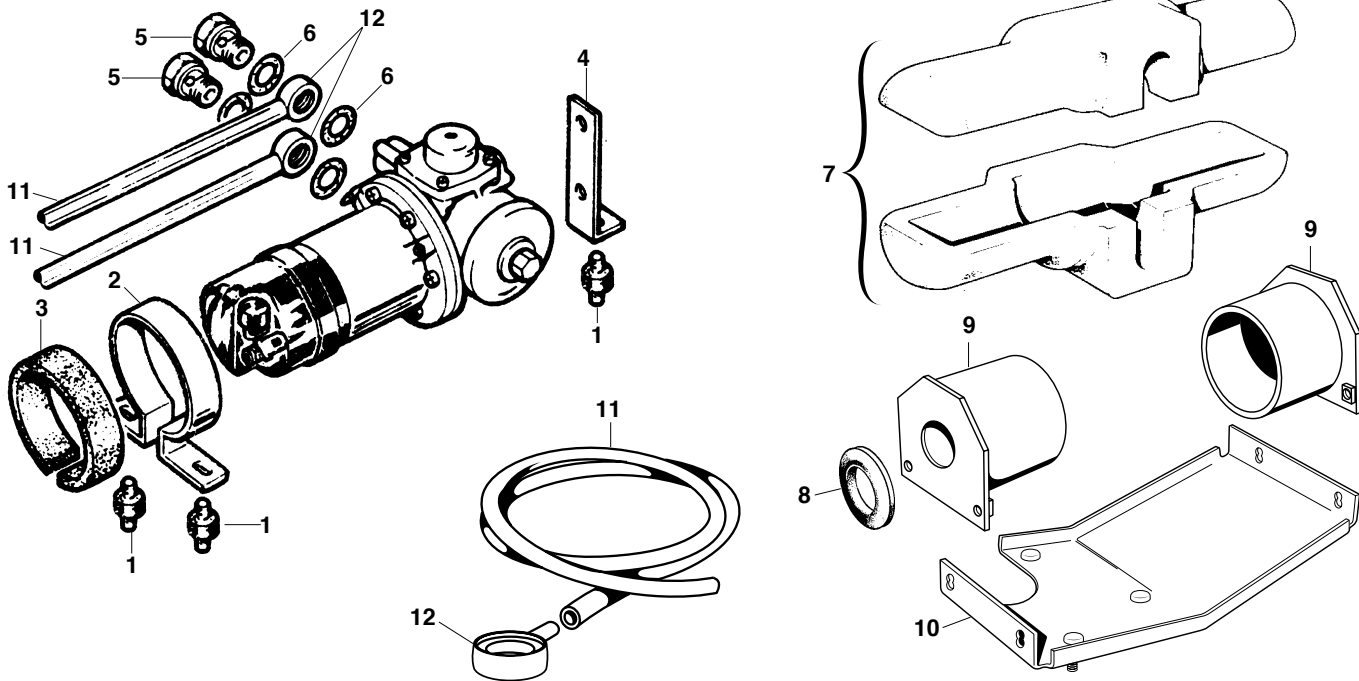
Carburetors/Fuel System



Fuel Pump Parts

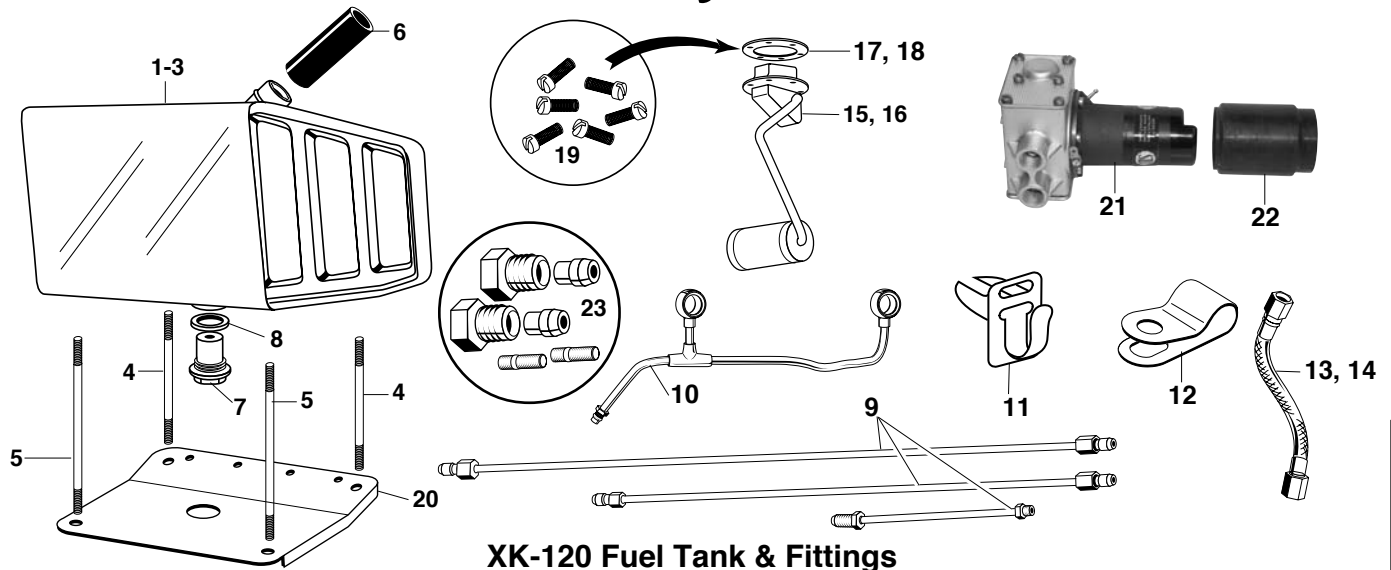
- | | | | |
|---|------------|---|------------|
| 1. Contact Points _____ | 03-0070 | 6. Fuel Pump Diaphragm, Square body pump w. 3" coil housing _____ | 03-AUB6099 |
| 2. Banjo Bolt Fitting (with Barbed End-XJ-6) _____ | C30946 | 7. Fuel Pump Diaphragm, Non square body pumps, pos. or neg. _____ | 03-AUB6097 |
| 3. Alloy/Rubber Washer (XJ-6) _____ | C42666 | 8. Check Valve _____ | 03-AUB6062 |
| 4. Banjo Bolt _____ | 03-AUC2698 | | |
| 5. Fuel Pump Diaphragm, Square body pump w/ 2.375" coil housing _____ | 03-AUB6097 | | |

Carburetors/Fuel System



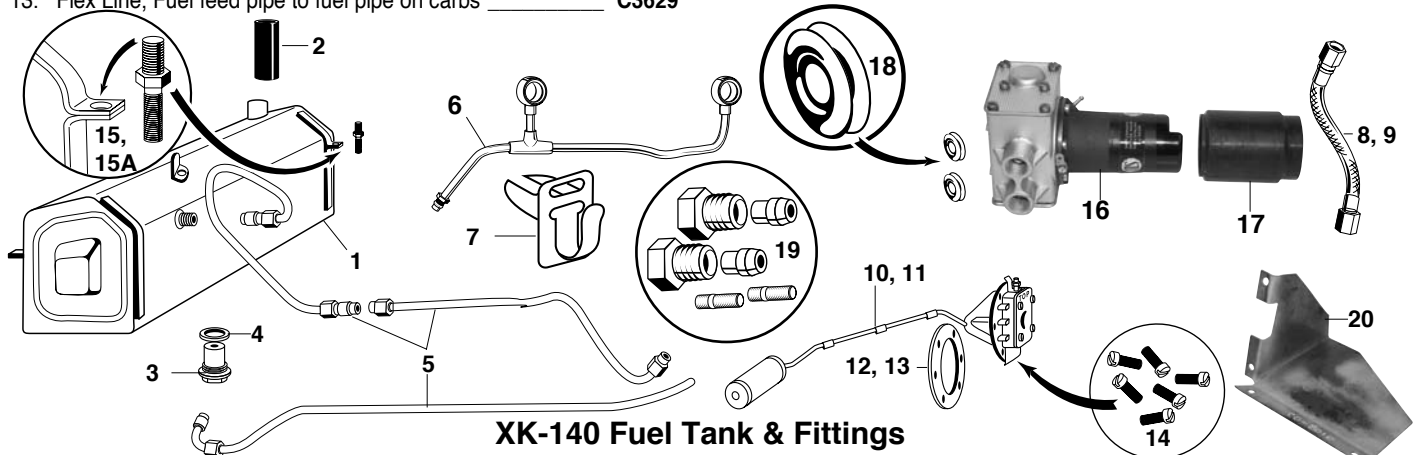
Fuel Pump Mount Components

- | | | | |
|--|------------|--|-------------|
| 1. E-Type Series I and II Pump Mounts _____ | BD24448 | 8. E-Type V-12 Pump Wiring Grommet _____ | JA-514732 |
| 2. E-Type Series I and II Circular Clip _____ | C23706 | 9. E-Type V-12 Fuel Pump Holder, two required _____ | C35188 |
| 3. E-Type Series I and II Circular Clip Foam _____ | C23361 | 10. E-Type V-12 Fuel Pump Bracket _____ | C35187 |
| 4. E-Type Series I and II "L" Bracket _____ | C24759 | 11. White Plastic Fuel Line, E-Type, MK II, Etc., per foot _____ | 03-0005 |
| 5. E-Type Series I and II Banjo Bolt _____ | 03-AUC2698 | 12. Brass Banjo for 5/16"-Bore Hose _____ | 03-AUC8398D |
| 6. E-Type Series I and II Banjo Bolt Washer _____ | 03-AUC2141 | Not Shown: | |
| 7. E-Type V-12 Pump Insulation Foam _____ | C36067 | 13. MK II Fuel Pump Mount Grommet (shown on page170) _____ | JA-CBC1448 |



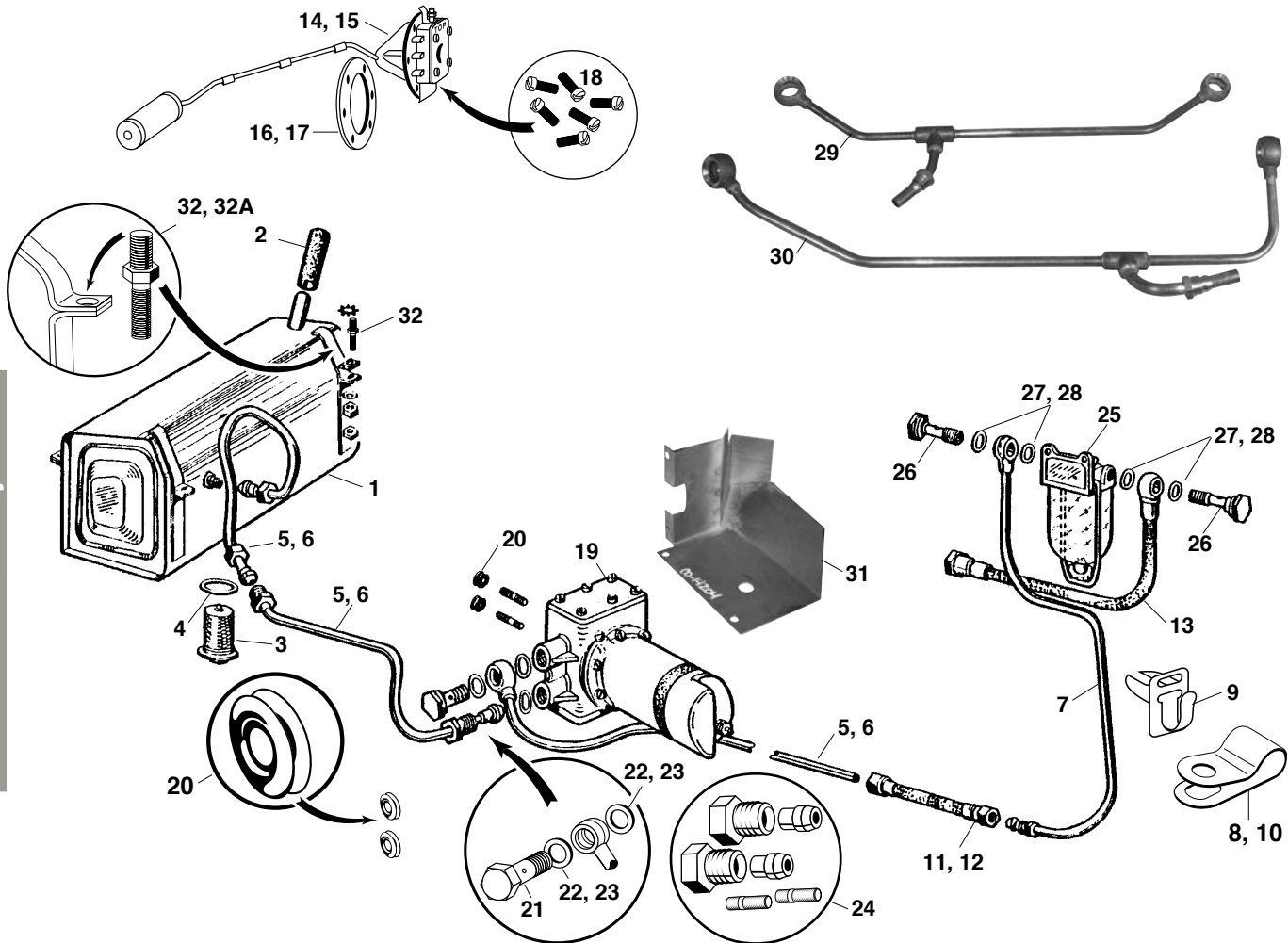
XK-120 Fuel Tank & Fittings

- | | | | |
|---|-----------------|---|-------------------------|
| 1. Fuel Tank, Steel, Roadster and FHC _____ | 03-0090 | 14. Compression Olive for C3629 flex line _____ | C37133-6 |
| 2. Fuel Tank, Aluminum, Roadster and FHC _____ | 03-0090A | 15. Fuel Sending Unit, new reproduction, w/ gasket _____ | 10-FT5386-02 |
| 3. Fuel Tank, Steel, DHC _____ | 03-0089 | 16. Fuel Sending Unit, rebuilt original _____ | 10-FT5386-02/RB |
| 4. Fuel Tank Support Rod, short (2 required) _____ | C4159 | 17. Gasket only for Fuel Sending Unit, neoprene _____ | JA-BTJ2953 |
| 5. Fuel Tank Support Rod, long (2 required) _____ | C4158 | 18. Gasket only for Fuel Sending Unit, cork _____ | SM-31-754-119SPR |
| 6. Fuel Filler Hose _____ | 18-0028 | 19. Screws for Fuel Sending Unit, six required _____ | JA-UFS313/3H |
| 7. Fuel Tank Drain Plug/Pickup Filter (gasket not included) _____ | C990 | 20. Fuel Tank Tray _____ | 16-0871 |
| 8. Gasket for plug _____ | C26310 | 21. Fuel Pump _____ | See Page 163 |
| 9. Copper Fuel Line Set (3 pieces) _____ | 03-0006 | 22. Cover for Fuel Pump _____ | C2839 |
| 10. Fuel Supply Pipe at Carburetors _____ | C3810 | 23. Fuel Pump Mount/Repair Kit, six pieces _____ | 03-WZX979 |
| 11. Fuel Line Clips to frame, 5 required _____ | C3727 | 24. Insulation Felt, Fuel Tank, 7' required (not shown) _____ | 18-2020 |
| 12. Fuel Line Clip, front pipe to dash, 1 required _____ | C1040-7 | 25. Mount Grommet, four required (not shown) _____ | C8370 |
| 13. Flex Line, Fuel feed pipe to fuel pipe on carbs _____ | C3629 | | |



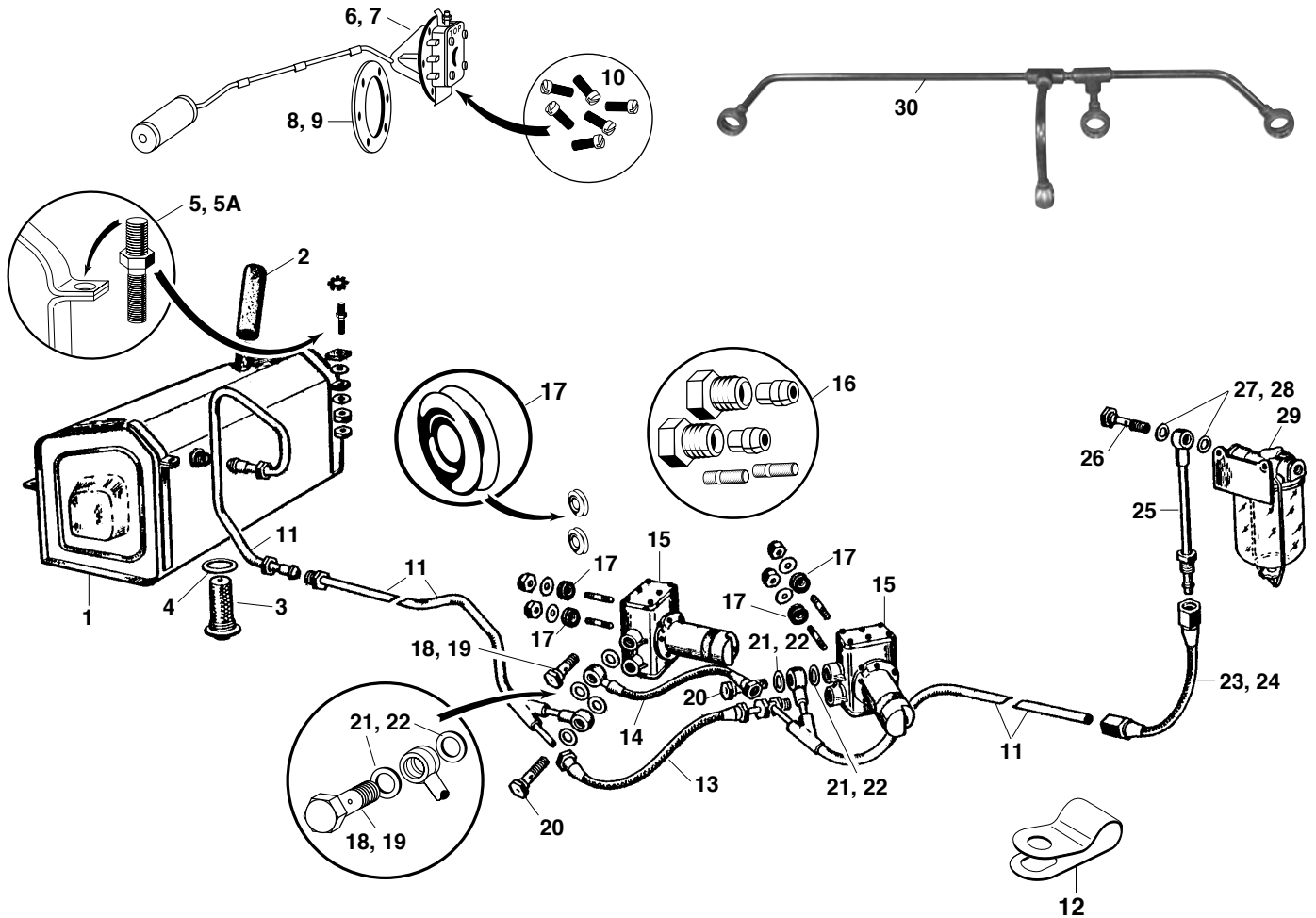
XK-140 Fuel Tank & Fittings

- | | | | |
|---|------------------------|---|-------------------------|
| 1. Steel Fuel Tank _____ | 03-0091 | 12. Gasket only for Fuel Sending Unit, neoprene _____ | JA-BTJ2953 |
| 2. Fuel Filler Hose _____ | 18-0028 | 13. Gasket only for Fuel Sending Unit, cork _____ | SM-31-754-119SPR |
| 3. Fuel Tank Drain Plug/Pickup Filter (gasket not included) _____ | C990 | 14. Screws for Fuel Sending Unit, six required _____ | JA-UFS313/3H |
| 4. Gasket for plug/filter _____ | C26310 | 15. Mount stud at front of tank _____ | C8368 |
| 5. Copper Fuel Line Set (3 pieces) _____ | 03-0007 | 15A. Mount stud at rear of tank _____ | C8369 |
| 6. Fuel Feed Pipe to Carburetors _____ | C3810 | 16. Fuel Pump _____ | See Page 163 |
| 7. Fuel Line Clips to frame, 5 required _____ | C3727 | 17. Cover for Fuel Pump _____ | C2839 |
| 8. Flex Line, Fuel feed pipe to fuel pipe on carbs _____ | C3629 | 18. Grommet, fuel pump mount, 2 required _____ | C974 |
| 9. Compression Olive for C3629 flex line _____ | C37133-6 | 19. Fuel Pump Mount/Repair Kit, 6 pieces _____ | 03-WZX979 |
| 10. Fuel Sending Unit, new reproduction, w/ gasket _____ | 10-FT5340-03 | 20. Shield, Fuel Pump _____ | C8010 |
| 11. Fuel Sending Unit, rebuilt original _____ | 10-FT5340-03/RB | 21. Insulation Felt, Fuel Tank, 7' required (not shown) _____ | 18-2020 |
| | | 22. Mount Grommet, four required (not shown) _____ | C8370 |



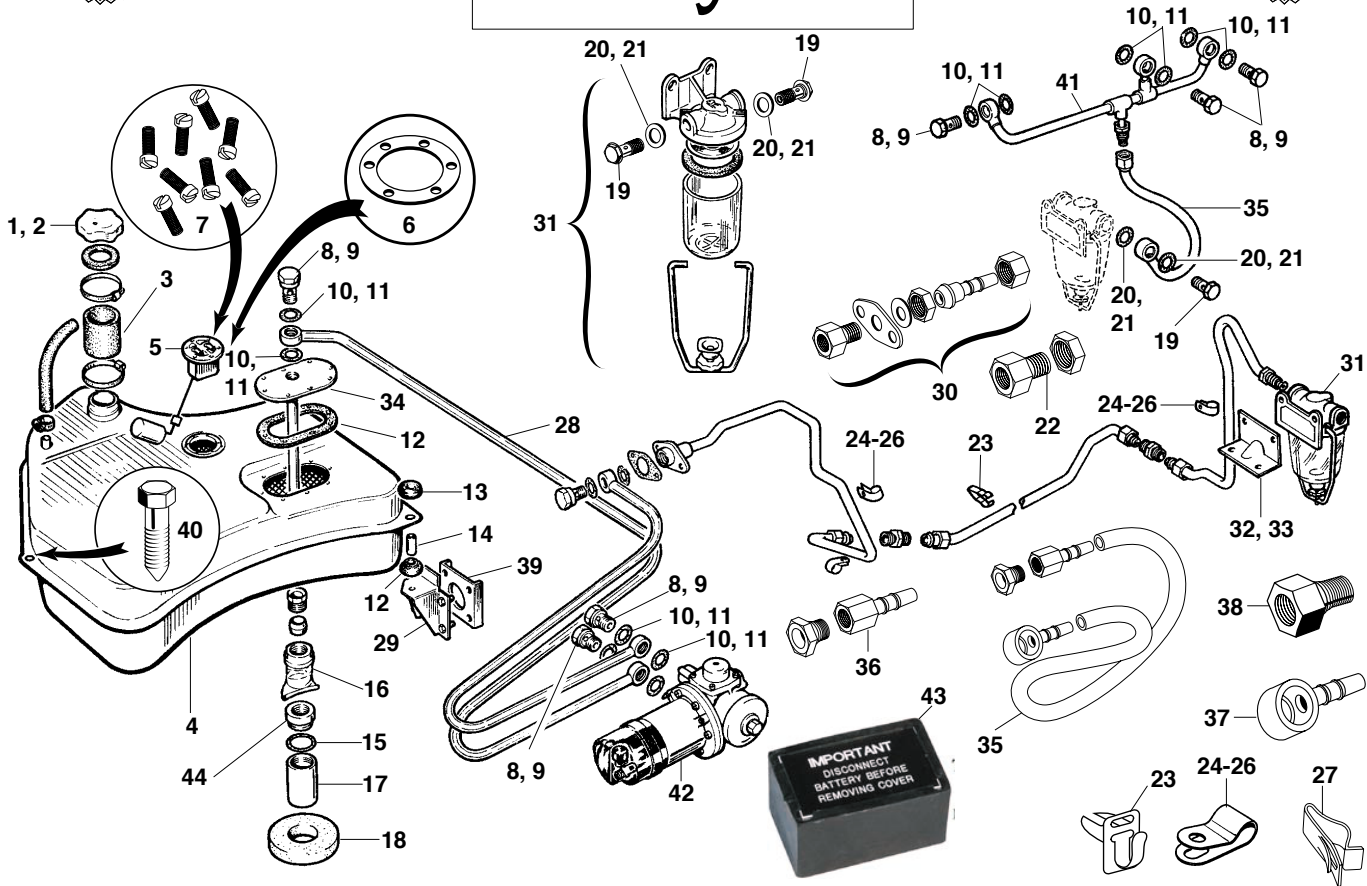
XK-150 Fuel Tank & Fittings

- | | | | |
|--|------------------------|--|-------------------------|
| 1. Fuel Tank, Steel _____ | 03-0092 | 16. Gasket only for Fuel Sending Unit, neoprene _____ | JA-BTJ2953 |
| 2. Fuel Filler Hose _____ | 18-0028 | 17. Gasket for Fuel Sending Unit, cork _____ | SM-31-754-119SPR |
| 3. Fuel Tank Drain Plug/Pickup Filter (gasket not included) _____ | C990 | 18. Screws for Fuel Sending Unit, six required _____ | JA-UFS313/3H |
| 4. Gasket for plug _____ | C26310 | 19. Fuel Pump _____ | 03-AUA152 |
| 5. Copper Fuel Line Sets:
Early-type without fuel filter or banjo fittings to fuel pump; not shown (OTS to 831142, DHC to 837628 and FHC to 835717) _____ | 03-0007 | 20. Grommet, Mounting fuel pump _____ | C974 |
| 6. Late-type with fuel filter and banjo fittings to fuel pump; shown (OTS from 831143, DHC from 837629, FHC from 835718.) Three pieces; does not include C15940 pipe to fuel filter. _____ | 03-0007-1 | 21. Banjo Bolt to Fuel Pump, later cars _____ | C1506 |
| 7. Pipe, Flex Line to Fuel Filter _____ | C15940 | 22. Washer, Pump Banjo Bolt, Red Fiber Type _____ | 03-AUC2141 |
| 8. Fuel Line Clip (rear pipe to bumper bracket), 1 req'd _____ | C1040-12 | 23. Washer, as above but soft alloy _____ | 03-AUC2141A |
| 9. Fuel Line Clips (to frame, 5 required) _____ | C3727 | 24. Fuel Pump Mount/Repair Kit, six pieces _____ | 03-WZX979 |
| 10. Fuel Line Clip (front pipe to dash, 1 required) _____ | C1040-7 | 25. Fuel Filter Assembly _____ | C13681 |
| 11. Flex Line, between intermediate and front fuel feed pipes _____ | C3629 | 26. Banjo Bolt, to fuel filter _____ | C13705 |
| 12. Compression Olive for C3629 flex line _____ | C37133-6 | 27. Washer, Filter Banjo Bolt, red fiber type _____ | C784 |
| 13. Flex Line, from filter to carburetor feed line _____
(OTS from 831899, FHC from 837941, DHC from 835935.) | C14492 | 28. Washer, Filter Banjo Bolt, soft alloy _____ | C784A |
| 14. Fuel Tank Sending Unit, new reproduction w/ gasket 10-FT5340-03 | | 29. Fuel Rail, early (cars without fuel filter) _____ | C12812 |
| 15. Fuel Tank Sending Unit, rebuilt original _____ | 10-FT5340-03/RB | 30. Fuel Rail, late (cars with fuel filter) _____ | C15868 |
| | | 31. Fuel Pump Shield _____ | C14204 |
| | | 32. Mount Stud, front of tank _____ | C8368 |
| | | 32A. Mount Stud, rear of tank _____ | C8369 |
| | | 33. Insulation Felt, Fuel Tank, 7' required, (not shown) _____ | 18-2020 |
| | | 34. Mount Grommet on Studs, four required (not shown) _____ | C8370 |



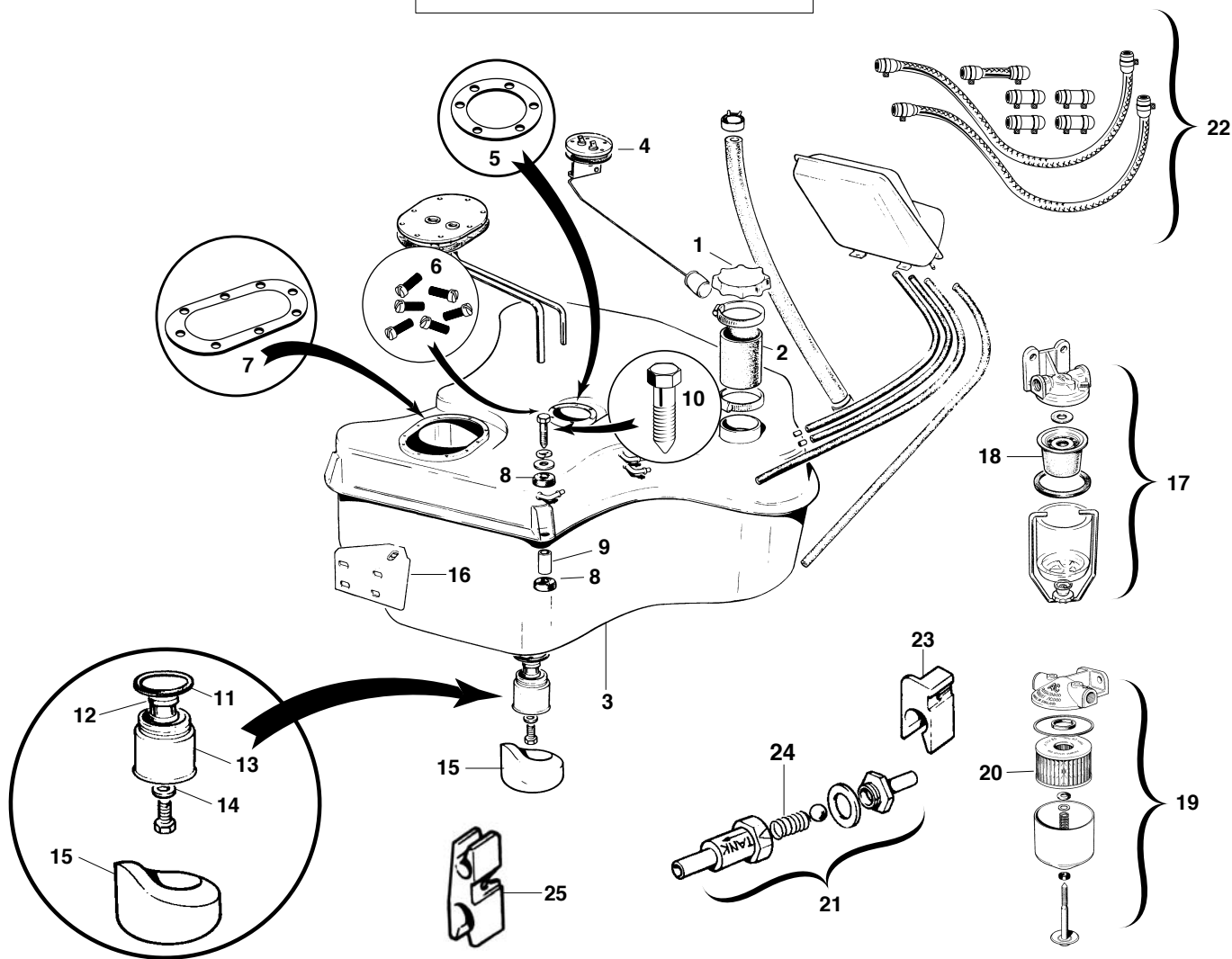
XK-150 "S" Fuel Tank & Fittings

- | | | | |
|---|-------------------------|---|---------------------|
| 1. Fuel Tank, Steel _____ | 03-0092 | 17. Grommet, Mounting fuel pumps _____ | C974 |
| 2. Fuel Filler Hose _____ | 18-0028 | 18. Banjo Bolt, flex pipe to outlet side of rear pump _____ | 03-AUC2698 |
| 3. Fuel Tank Drain Plug/Pickup Filter (gasket not included) ____ | C990 | 19. Banjo Bolt, stainless steel _____ | 03-AUC2698SS |
| 4. Gasket for plug _____ | C26310 | 20. Banjo Bolt, Center Pipe to Inlet of Rear Fuel Pump and Front Pipe to Outlet of Front Pump _____ | C1506 |
| 5. Mount Stud, front of tank _____ | C8368 | 21. Washer, on Banjo Bolts, Red Fiber Type _____ | 03-AUC2141 |
| 5A. Mount Stud, rear of tank _____ | C8369 | 22. Washer, as above but soft alloy _____ | 03-AUC2141A |
| 6. Sending Unit, Fuel, new reproduction w/ gasket ____ | 10-FT5340-03 | 23. Flex Line, Front Pipe to Lower Pipe _____ | C3629 |
| 7. Sending Unit, Fuel, rebuilt original _____ | 10-FT5340-03/RB | 24. Compression Olive for C3629 flex line _____ | C37133-6 |
| 8. Gasket only for Fuel Sending Unit, neoprene _____ | JA-BTJ2953 | 25. Banjo Pipe, to Fuel Filter _____ | C14357 |
| 9. Gasket for Fuel Sending Unit, cork _____ | SM-31-754-119SPR | 26. Banjo Bolt, to fuel filter _____ | C13705 |
| 10. Screws for Fuel Sending Unit, six required _____ | JA-UFS313/3H | 27. Washer, Banjo Bolt, red fiber type _____ | C784 |
| 11. Copper Fuel Line Set _____ | 03-0008 | 28. Washer, Banjo Bolt, soft alloy _____ | C784A |
| Note: Does not include flex hoses or banjo bolts. | | 29. Fuel Filter Assembly _____ | C13681 |
| 12. Fuel Line Clip (rear pipe to bracket on frame), 1 req'd ____ | C1040-12 | Note: Also see Page 147 for additional Fuel Filter Components. | |
| 13. Flex Line, center pipe to inlet of front pump _____ | C14734 | 30. Fuel Rail _____ | C15283 |
| 14. Flex Line, Outlet of rear pump to front pipe _____ | C14271 | 31. Insulation Felt, Fuel Tank, 7' required (not shown) _____ | 18-2020 |
| 15. Fuel Pump, two required _____ | 03-AUA152 | 32. Mount Grommet, four required (not shown) _____ | C8370 |
| 16. Fuel Pump Mount/Repair Kit _____ | 03-WZX979 | | |
| <i>(Two each mount studs, male-threaded and brass fuel fittings.)</i> | | | |



Fuel Tanks & Fittings, E-Type Series I & II

- | | | | |
|---|---------------------|--|---------------------|
| 1. Fuel Filler Cap, 3.8 Series I _____ | C9024 | 22. Fuel Line Fitting at bulkhead _____ | C17630 |
| 2. Fuel Filler Cap, 4.2 Series I and II _____ | C23601 | 23. Fuel Line Clip, Series I and II, 2 required _____ | C3727 |
| 3. Filler Hose, all _____ | C18936 | 24. Fuel Line Clip, Series I 4.2 and II, 7 required _____ | C1040-6 |
| 4. Fuel Tank, Series I, early Series II _____ | 03-0093 | 25. Fuel Line Clip, 3.8, one required _____ | C1040-9 |
| (Series I and early Series II tanks have a single vent nipple on top; later Series IIs have three small nipples on the side.) | | 26. Fuel Line Clip, 3.8, one required _____ | C1040-12 |
| Fuel Tank, Series II (from OTS 1R.20486; FHC 1R.11052 and 2+2 1R.42851) _____ | 03-0094 | 27. Fuel Pipe Mount Clip, 3.8 Liter, 4 required _____ | C10268 |
| 5. Sending Unit, universal type, all _____ | SM-TB9006KIT | 28. White Plastic Fuel Line, per foot, no fittings _____ | 03-0005 |
| 6. Seal, Sending Unit to Tank, all _____ | JA-BTJ2953 | 29. Fuel Tank Mount Bracket _____ | BD16008 |
| 7. Screws, Sending Unit, 6 required, all _____ | JA-UFS313/3H | 30. Connector Assembly at Bulkhead, Series I & II SWB
Includes C17630 body, C3729 brass nut, C18254 plate, C10267 washer, union nut and pipe nipple. Not for 2+2. _____ | 03-1246 |
| 8. Banjo Bolt _____ | 03-AUC2698 | 31. Fuel Filter Assembly, Series I & II _____ | C13681 |
| 9. Banjo Bolt, stainless steel _____ | 03-AUC2698SS | 32. Filter Mount Bracket, Series I 3.8 _____ | C17354 |
| 10. Washer on Banjo Bolt, Red Fiber _____ | 03-AUC2141 | 33. Filter Mount Bracket, Series I 4.2 _____ | C24825 |
| 11. Washer on Banjo Bolt, soft alloy _____ | 03-AUC2141A | 34. Fuel Pick-Up Tube and Cover Plate, 4.2 Liter _____ | C24542 |
| 12. Pick-Up Plate Gasket, all _____ | C22226 | 35. Feed Line Assy to 1966; lines & fittings, assembly req'd. _____ | C17335 |
| 13. Tank Mount Grommets, all, 6 required, all _____ | C19846 | 36. As above but barbed fitting and nut only _____ | 03-0131 |
| 14. Distance Tube, all E-Types, 3 required, all _____ | C6390 | 37. Banjo Only, to fuel filter _____ | 03-0137 |
| 15. Seal, Sump to Tank _____ | C26310 | 38. Male fitting to Fuel Filter, Later Series I _____ | C24723 |
| 16. Sump Filter _____ | C21900 | 39. Mount Bracket, front of tank _____ | BD16553 |
| 17. Sump _____ | C19302 | 40. Tank Mount Bolts, three required _____ | C11920 |
| 18. Pad, Under Tank, Series I & II 4.2 _____ | C18906 | 41. Carburettor Feed Pipe, Series I _____ | C15823 |
| 19. Banjo Bolts at Fuel Filter _____ | C13705 | 42. Fuel Pump _____ | See Page 163 |
| 20. Washers at Fuel Filter, red fiber type _____ | C784 | 43. Terminal Block, 3.8 Fuel Pump Leads _____ | C18346 |
| 21. Washers at Fuel Filter, soft alloy type _____ | C784A | 44. Sump Ring, later 3.8, 4.2 Series I _____ | C19298 |

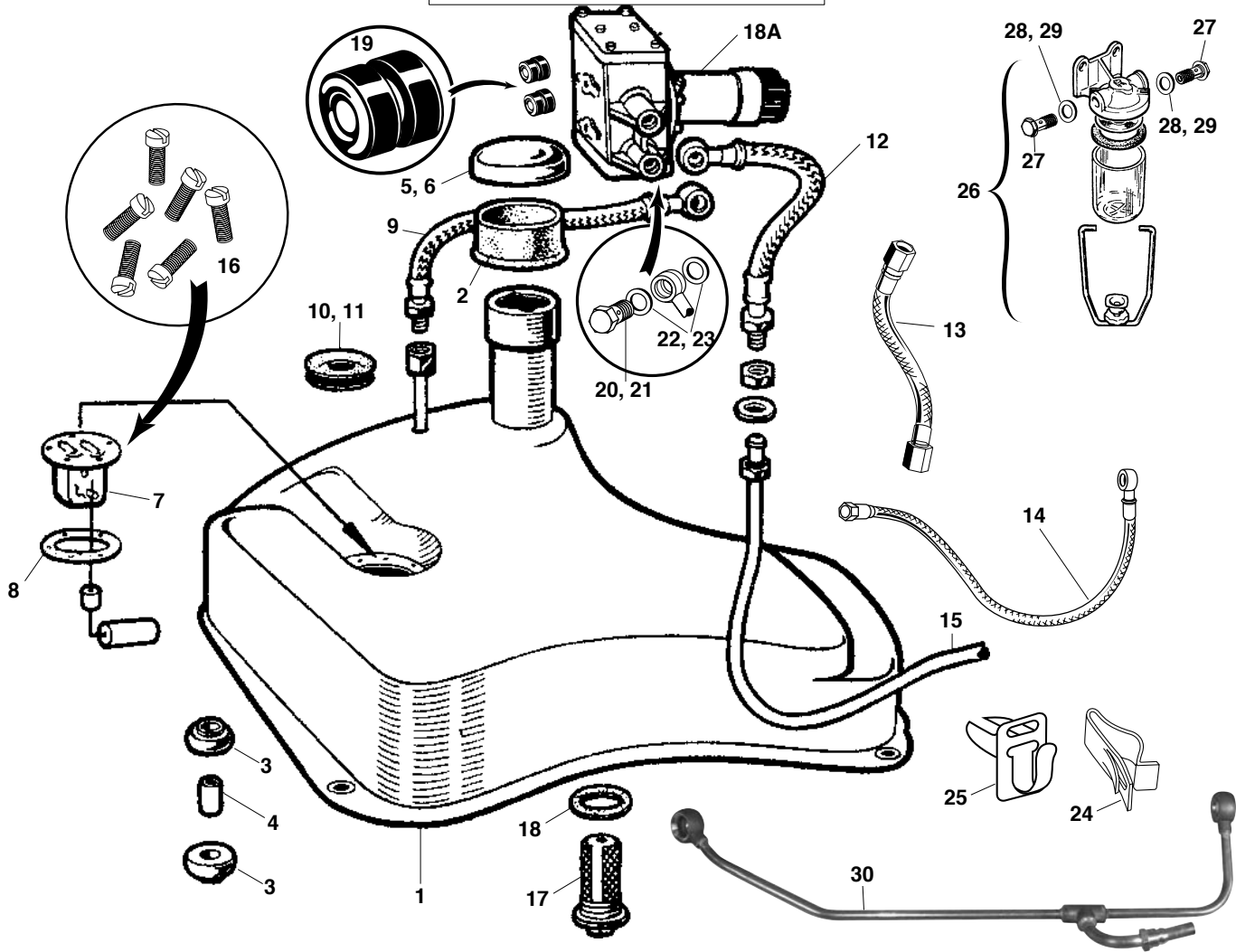


Carburetors/Fuel System

Fuel Tank & Fittings, E-Type Series III V-12

- | | | | |
|--|---------------------|---|-----------------|
| 1. Fuel Filler Cap _____ | C23601 | 15. Pad, Under Tank _____ | BD37908 |
| 2. Filler Hose _____ | C18936 | 16. Fuel Tank Mount Bracket _____ | BD37892 |
| 3. Fuel Tank _____ | 03-0095 | 17. Fuel Filter Assembly, Early Glass Bowl Type _____ | C27588 |
| 4. Sending Unit, universal type, includes seal _____ | SM-TB9006KIT | 18. Replacement Fuel Filter Element, Glass Bowl _____ | C28080 |
| 5. Seal, Sending Unit to Tank _____ | JA-BTJ2953 | 19. Fuel Filter Assembly, Later Metal Bowl Type _____ | C38490 |
| 6. Screws, Sending Unit, 6 required _____ | JA-UFS313/3H | 20. Replacement Fuel Filter Element, Metal Bowl _____ | JA-JS660 |
| 7. Pick-Up Plate Gasket _____ | C22226 | 21. Fuel Non-Return Valve, maintains proper fuel pressure _____ | C34824 |
| 8. Tank Mount Grommets, all, 6 required _____ | C19846 | 22. Fuel Flex Line Kit, braided stainless steel _____ | 03-FPK02 |
| 9. Distance Tube, 3 required _____ | C6390 | <i>Note: 03-FPK02 does not match original braid pattern.</i> | |
| 10. Fuel Tank Mount Bolt, three required _____ | C11920 | 23. Fuel Line Clip, three required on feed pipes _____ | C34867 |
| 11. Seal, Sump to Tank _____ | C26310 | 24. Spring Only, Non-Return Valve _____ | C34828 |
| 12. Sump Filter _____ | C29445 | 25. Pipe Clip, four on return pipes _____ | C34866 |
| 13. Sump _____ | C32305 | | |
| 14. Seal, Bottom of Sump _____ | C26311 | | |

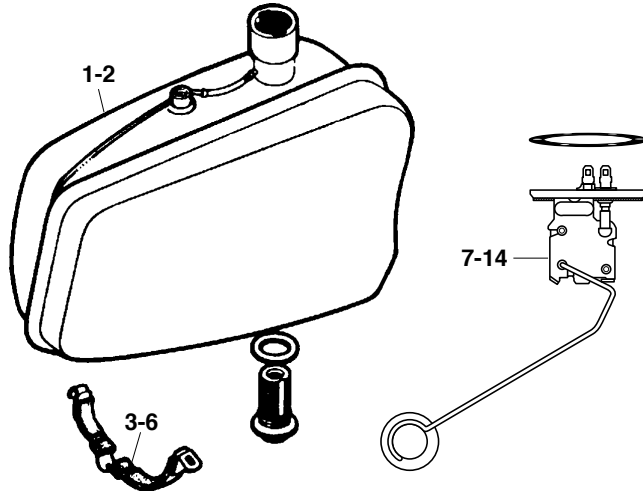
Also see fuel pump and filter pages for additional parts.



MK I and MK II Fuel Tank & Fittings

- | | | | |
|--|---------------------|--|---------------------|
| 1. Fuel Tank, MK II, 340 (not MK I) _____ | 03-0096 | front and rear feed pipes. Does not include flex pipe from front feed pipe to fuel filter (purchase 03-0005 fuel line and re-use existing fittings.) _____ | 03-FPK01 |
| 2. Grommet, on filler spout _____ | BD9898 | 16. Screws for Sender, six required _____ | JA-UFS313/3H |
| 3. Mounting Bush, 6 Required _____ | C3053 | 17. Sump Filter, does not include gasket _____ | C990 |
| 4. Distance Tube on Mount Bush, 3 Required _____ | C6390 | 18. Gasket, For C990 Fuel Tank Sump Filter _____ | C26310 |
| 5. Fuel Filler Cap, MK I _____ | C9024 | 18A. Fuel Pump _____ | See Page 50 |
| 6. Fuel Filler Cap, MK II _____ | C23601 | 19. Grommet on fuel pump, two required _____ | JA-CBC1448 |
| 7. Fuel Sending Unit, gasket included, MK II only _____ | SM-TB9006KIT | 20. Banjo Bolt to Fuel Pump _____ | 03-AUC2698 |
| 8. Gasket only for Sending Unit, neoprene _____ | JA-BTJ2953 | 21. Banjo Bolt to Fuel Pump, stainless steel _____ | 03-AUC2698SS |
| 9. Flex Pipe from Tank to Pump _____ | C9028 | 22. Washers on Banjo Bolts, Red Fiber _____ | 03-AUC2141 |
| (Braided metal type; can be used in place of later nylon.) | | 23. Washers on Banjo Bolts, Soft Alloy _____ | 03-AUC2141A |
| 10. Grommet, in trunk floor, for metal flex pipe _____ | C2708 | 24. Special Clip on Pipes, seven required _____ | C10268 |
| 11. Grommet in trunk floor, for nylon flex pipe _____ | C2707 | 25. Special Clip on Pipes, 3 req'd (5 with nylon pipes) _____ | C3727 |
| 12. Flex Pipe, from pump to rear feed pipe, MK I, 3.4 MK II to 176169, 3.8 MK II to 214536 _____ | C12305 | 26. Fuel Filter Assembly _____ | C13681 |
| 13. Flex Pipe, Fuel Filter to Carburetor Feed Pipe, MK I to 990243 _____ | C3629 | 27. Banjo Bolt to Fuel Filter _____ | C13705 |
| 14. Flex Pipe, Fuel Filter to Carburetor Feed Pipe, MK I from 990244, 3.4 MK II to 176169, 3.8 MK II to 214536 _____ | C14492 | 28. Washer on Banjo Bolts, red fiber type _____ | C784 |
| 15. MK II Fuel Pipe Set, copper. Includes flex pipe from pump and | | 29. Washer on Banjo Bolts, soft alloy type _____ | C784A |
| | | 30. Feed Pipe, MK II 3.4 to 178910, 3.8 to 222138 _____ | C15868 |

3.8S and 420 Fuel Tanks & Fittings



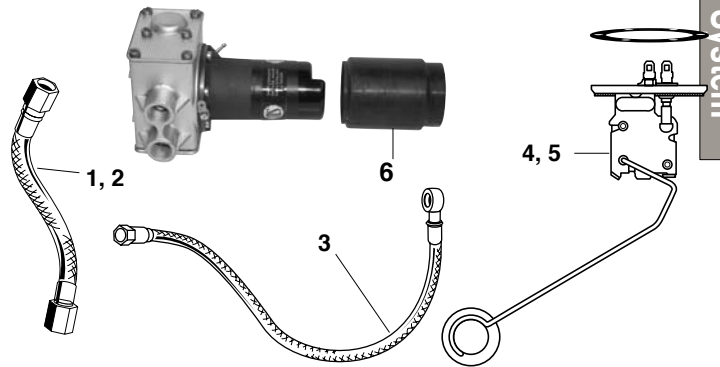
1. Fuel Tank, RH, 3.8S, 420 _____ C22470
2. Fuel Tank, LH, 3.8S, 420 _____ C22469
3. Tank Mount Strap, 3.8S, 420, RH front _____ BD25253
4. Tank Mount Strap, 3.8S, 420, LH front _____ BD25254
5. Tank Mount Strap, 3.8S, 420, RH rear _____ BD25255
6. Tank Mount Strap, 3.8S, 420, LH rear _____ BD25256

Rebuilt Fuel Senders:

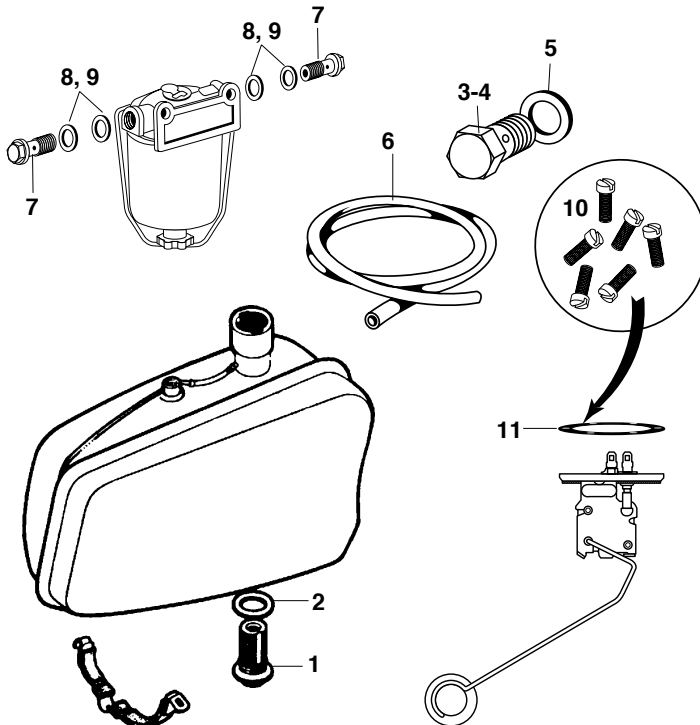
7. 3.8S, Right Side _____ C21973/RB
8. 3.8S, Left Side _____ C21974/RB
9. 420, Right Side _____ C26211/RB
10. 420, Left Side _____ C26212/RB
11. MK X 4.2/420G, Right Side _____ C23055/RB
12. MK X 4.2/420G, Left Side _____ C23054/RB
13. MK X 3.8, Right Side _____ C22371/RB
14. MK X 3.8, Left Side _____ C22370/RB

MK VII, MK VIII and MK IX

1. Flex Line, front pipe to carb feed pipe:
MK VII, MK VIII and MK IX 790875 to 792550 _____ C3629
2. Compression Olive for C3629 flex line _____ C37133-6
3. Flex Line, filter to carb pipe, MK IX to 792550 _____ C14492
4. Fuel Level Sending Unit, Rebuilt, RH _____ C4539/RB
5. Fuel Level Sending Unit, Rebuilt, LH _____ C4540/RB
6. Fuel Pump Cover _____ C2839

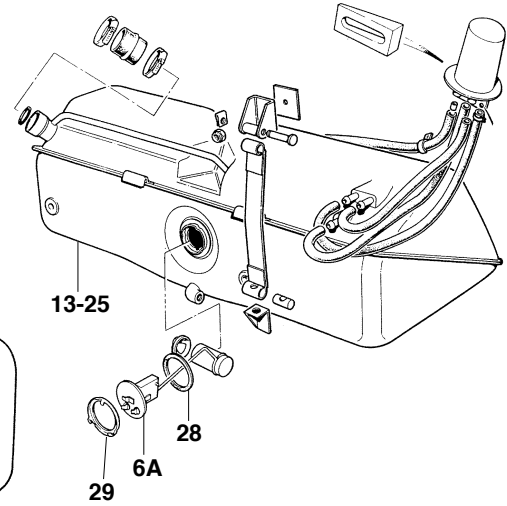
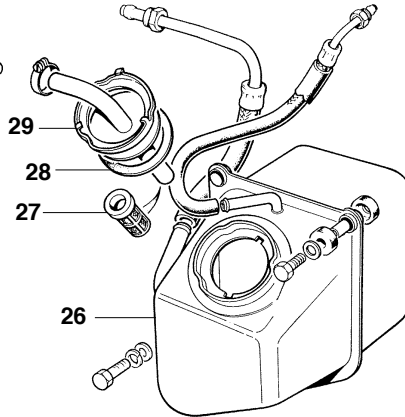
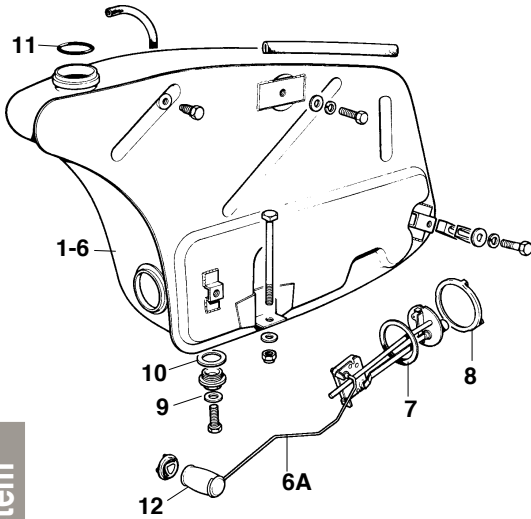


Carburetors/Fuel System



All Early Sedans

1. Sump Filter, gasket not included _____ C990
2. Gasket, For C990 Fuel Tank Sump Filter _____ C26310
3. Banjo Bolt, Fuel Line Fittings to Fuel Pump:
MK IX, MK I, MK II, 3.8S, MK X, 420G _____ 03-AUC2698
4. Banjo Bolt, as above, stainless steel _____ 03-AUC2698SS
5. Washer for Banjo Bolt, Fiber _____ 03-AUC2141
6. White Plastic Fuel Line, per foot _____ 03-0005
7. Banjo Bolt, at Fuel Filter _____ C13705
8. Banjo Washer, at Fuel Filter, red fiber type _____ C784
9. Banjo Washer, soft alloy type _____ C784A
10. Screws for Sender _____ JA-UFS313/3H
11. Seal for Sending Unit _____ JA-BTJ2953



Fuel Tanks: XJ-6, XJ-12

1. XJ-6 Series I & II, to VIN 2T.58223, Right (NLS) _____ **C40190'**
2. XJ-6 Series I & II, to VIN 2T.58223, Left (NLS) _____ **C40191'**
3. XJ-6, with In-Tank Fuel Pumps, Right _____ **JA-CAC5516-1**
4. XJ-6, with In-Tank Fuel Pumps, Left _____ **JA-CAC5517-1**
5. XJ-6 Series II, 2T.58224-on, & III, all, RH _____ **JA-CAC5522-1**
6. XJ-6 Series II, 2T.58224-on, & III, all, LH _____ **JA-CAC5523-1**
1. XJ-12 Series I & II, To VIN 2R.53902, right (NLS) _____ **C40190'**
2. XJ-12 Series I & II, To VIN 2R.53902, Left (NLS) _____ **C40191'**
5. XJ-12 Series II, VIN 2R.53903-on, RH _____ **JA-CAC5522-1**
6. XJ-12 Series II, VIN 2R.53903, LH _____ **JA-CAC5523-1**
- 6A. Fuel Sending Units _____ **See Page 200**
7. Seal, Sending Unit to Tank _____ **JA-ARA1502**
8. Lock Ring _____ **JA-ARA1501/J**
9. Small Gasket, 2 Required _____ **C26311**
10. Rubber Washer, On Drain Plug _____ **C26310**
11. O-Ring, Top of Tank _____ **C46161**
12. Fuel Float _____ **03-0100**

Note 1. Tanks C40190 and C40191 have rear-mounted sending units; if you are replacing a tank with a front-mounted sending unit, you will need to purchase a rear-mount sending unit. The old front-mount unit will not fit the new tank.

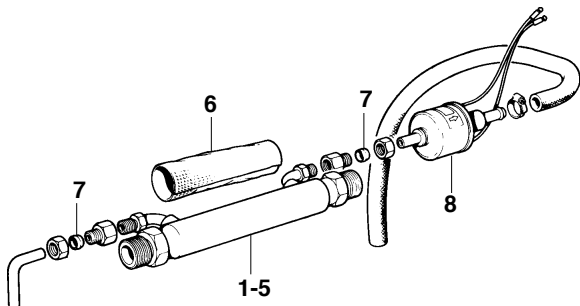
Fuel Tanks: XJ-S

13. 5.3-Liter Coupe, 1976 through 1987 _____ **JA-EBC5188**
Note: Requires JA-CBC8637 pipe and JA-CBC8639 hose.
13. 5.3-Liter Coupe, 1988 through 1991 _____ **JA-EBC5188**
14. 5.3 Coupe, '92 to early '93 (VINS 179737-185892) **JA-EBC10492-1**
Note: Requires JA-DBC12115 module & JA-JLM20253 filler kit.
15. 5.3-Liter Coupe, early 1993-on (185893-188104) **JA-EBC11375-1**
16. 5.3-Liter Cabriolet _____ **JA-EBC9092**
17. 5.3 & 4.0-Liter Convertible, to VIN 161713 _____ **JA-CBC6579-1**
18. 5.3 & 4.0-Liter Convertible, VINs 161714 -179737 **JA-EBC8719-1**
19. 5.3 & 4.0-Liter Convertible, VIN 179738-on _____ **JA-NHB5908AA-1**
20. 4.0-Liter Coupe, VINs 188105 to 189045 _____ **JA-NHC5908AB-1**
21. 4.0-Liter Coupe, VINs 189046-194774 _____ **JA-NHC5908AD-1**
22. 4.0-Liter Coupe, VIN 194775-on _____ **JA-NHF5908AA**
23. 6.0-Liter Coupe, VINs 188105-194774 _____ **JA-NHC5908CB-1**
24. 6.0-Liter Coupe, VIN 194775-on _____ **JA-NHF5908BA**
25. 6.0-Liter Convertible _____ **JA-NHF5908DA**
26. Fuel Sump _____ **C41794**
27. Filter in Sump _____ **JA-CBC5649**
28. Seal, To Tank Unit and Sump _____ **JA-ARA1502**
29. Lock Ring, To Tank Unit and Sump _____ **JA-ARA1501/J**

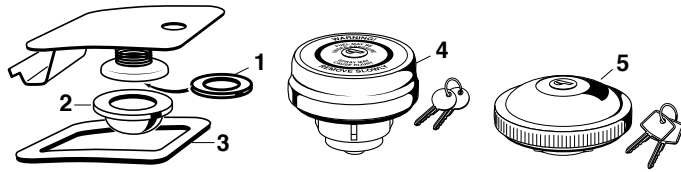
XJ-6 Fuel Coolers

1. Fuel Cooler, Series I (NLS) _____ **C33737**
2. Fuel Cooler, Carbureted Series II (NLS) _____ **JA-CBC2174**
3. Fuel Cooler, Fuel Injected Series II (NLS) _____ **JA-CBC1804**
3. Fuel Cooler, Series III, To VIN 346687 (About 1982) **JA-CAC1804****
4. Fuel Cooler, Ser. III, VIN 346688 to 425205 ('83 -'85.5) **JA-CAC7911****
5. Fuel Cooler, Series III, VIN 425206-on ('85.5 - '87) _____ **JA-CAC7927**
6. Insulation, Carbureted Series II (NLS) _____ **C46103**
7. Olive, Carbureted Series II (NLS) _____ **C37133-6**
8. Solenoid, S. II, 2T.56746 to 2T.69450 _____ **JA-CAC1880**

**JA-CAC1804 has a return hose with 9/32" inner diameter and JA-CAC7911 has a return hose with 11/32" inner diameter.



Fuel Filler Caps



XK-120, XK-140, XK-150, MK VII, MK VIII, MK IX

- 1. Cork Seal on Filler Cap _____ **BD3189**
- 2. Rubber Bulb Seal (update of BD3189) _____ **BD8076**
- 3. Filler Door Aperture Seal, XKs only _____ **BD4354**

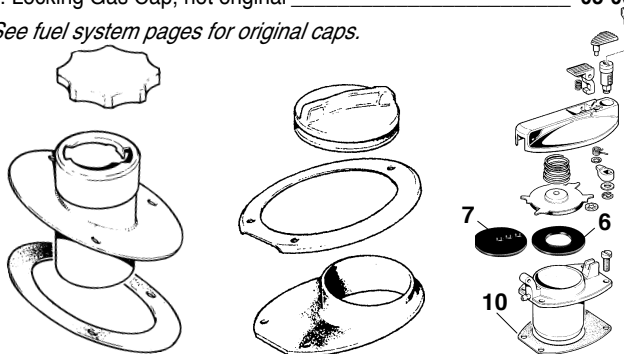
1955 - 1968 MK I & II, E-Type Series I & II

- 4. Locking Gas Cap, not original _____ **03-0082**

1969 - 1974 E-Type Series II & III

- 5. Locking Gas Cap, not original _____ **03-0084**

See fuel system pages for original caps.



Filler Cap Seal Sets, XJ-6/XJ-12 Series I, II and III. Old seals harden with age and allow water in and fuel vapors out, neither of which is desirable. Superior material to the original items, which are no longer available. Early type fits cars designed for leaded fuels, late type is for unleaded fuel cars and rivet in place (rivets included).

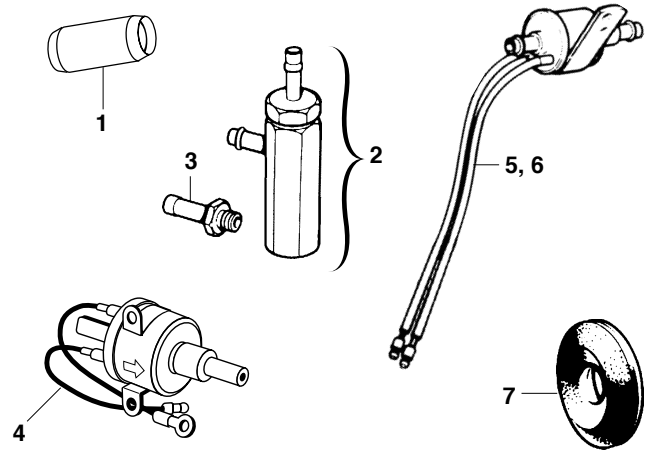
- 6. Fuel Filler Seals, Pair, Early _____ **03-1500**
- 7. Fuel Filler Seals, Pair, Late _____ **03-1501**

Filler Caps:

XJ-6, XJ-12 Series I, '69 - '73

This cap is NLS. Some minor individual components may be available. Please inquire.

- 8. **XJ-6, XJ-12 Series II, '74 - '79 1/2**
Complete Cap Assembly _____ **JA-BAC1955**
(Fits four-door, unleaded fuel applications only with non-stepped body. Inquire for availability of individual components.)
- 9. **XJ-6, Series III, '79 1/2 - '87**
Complete cap assembly, RH _____ **JA-BAC1954**
- 8. Complete cap assembly, LH _____ **JA-BAC1955**
(Inquire for availability of individual components.)
- 10. **Gasket, between body and cap assy.** _____ **BD31144**
- 11. **XJ-S, 1976 - 1996 Coupe, Gas Cap, to VIN 194774** **JA-CBC6027**
- 12. **XJ-S, 1976 - 1996 Gas Cap, from VIN 194775** **JA-NJA5942AD**
- 13. **XJ-S, Cabriolet and Convertible**
Complete cap assembly, to VIN 187836 _____ **JA-BEC24034**
- 14. **XJ-S, Cabriolet and Convertible**
Complete cap assembly, **From VIN 187837** _____ **JA-BEC24035**
(Inquire for availability of associated components.)
- 15. **XJ-40, Gas Cap, 1988-1990** _____ **JA-CBC5292**
- 12. **XJ-40, Gas Cap, 1991-on** _____ **JA-NJA5942AD**



Fuel Feed and Return System

XJ-6, Series I, II and III

- 1. **Non-Return Valve in Feed System**
Press Fits Into Fuel Line Hose, Carbureted Series II **JA-CAC1233**
- 2. **Pressure Relief Valve Assembly**
Includes LU-54739496 non-return valve,
All fuel injected cars. _____ **JA-CAC2028**
- 3. **Non-Return Valve Only**
On pressure relief valve. All fuel injected cars. _____ **LU-54739496**
- 4. **Fuel Change-Over Valve,**
Selects Right or Left Fuel Tank _____ **JA-CBC4269**

Return Valve - Return System:

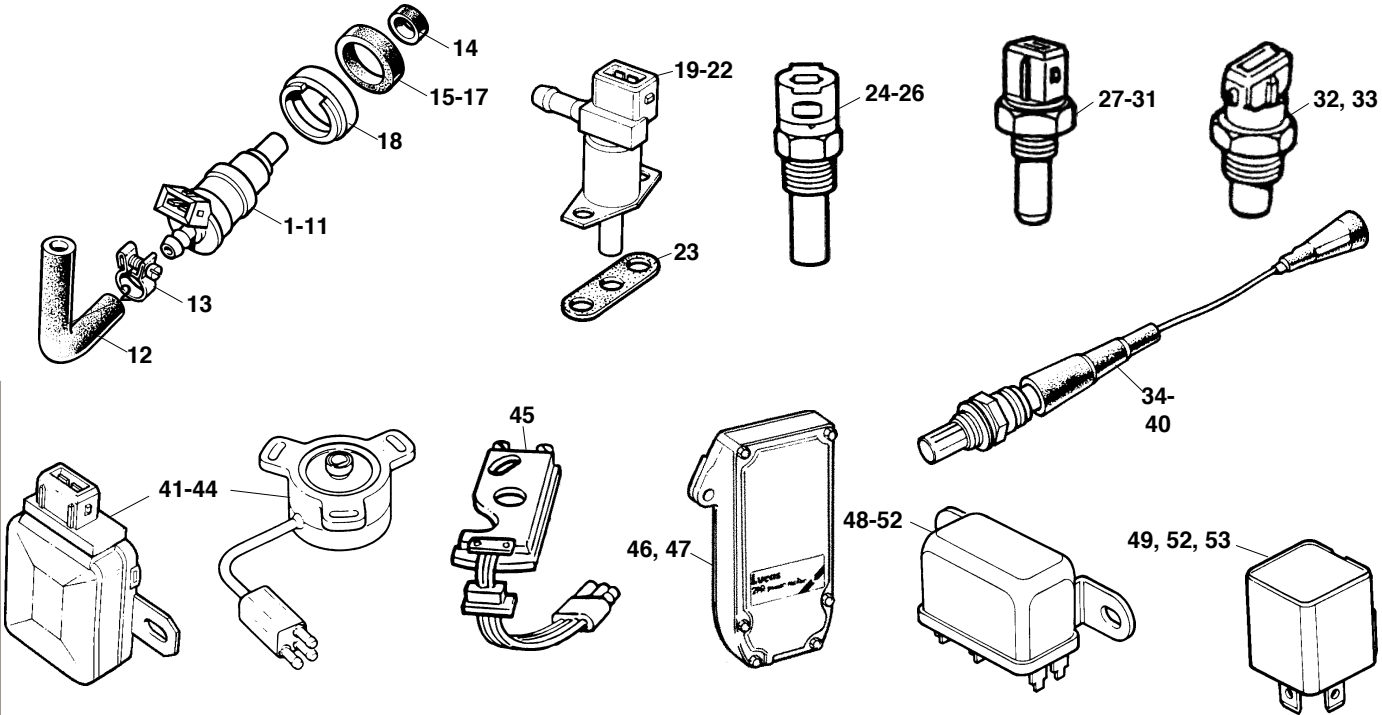
- 5. Directs return fuel to the tank selected by change-over valve,
Right Side _____ **JA-CBC4270**
- 6. Directs return fuel to the tank selected by change-over valve,
Left Side _____ **JA-CAC3939**
- 7. **Grommet, feed and return pipes through fender well** _____ **C975**

XJ-12

- 2. **Pressure Relief Valve Assembly**
Includes non-return valve, LU-54739496
All fuel injected Series II _____ **JA-CAC2028**
- 3. **Non-Return Valve**
On pressure relief valve. Fuel injected Series II _____ **LU-54739496**
- 4. **Fuel Change-Over Valve,**
Fuel Injected Series II _____ **JA-CBC4269**
- 8. **Return System Valve, Carbureted (not shown)**
2 Required, Series I & II to VIN 2R53735 (NLS) _____ **C36468**
- 9. **Return System Valve, Carbureted (not shown)**
2 Required, Series I & II, VIN 2R53736 to 2R53902 _____ **C42417**
- 10. **Return Valve, Return System, Fuel Injected (not shown)**
Series II, VIN 2R53903 to 2R58420 _____ **JA-CAC3940**
- 5. **RH Return Valve, Return System, Fuel Injected**
Series II, VIN 2R58421-on (1978-on) _____ **JA-CBC4270**
- 6. **LH Return Valve, Return System, Fuel Injected**
Series II, VIN 2R58421-on (1978-on) _____ **JA-CAC3939**

XJ-S

- 3. **Non-Return Valve, On Fuel Pump**
1975 - on _____ **LU-54739496**



1977 to 1987 XJ-6, XJ-12, and XJ-S V-12 1976-on Fuel Injection

Fuel Injectors

1. XJ-6, 1978-'87 _____ **LU-73179**
2. XJ-12, XJ-S to 1980 _____ **LU-73143**
3. XJ-S H.E., '80-'84 _____ **LU-73178**
4. XJ-S 5.3, 1985-1993 _____ **LU-73304**
5. XJ-S 6.0 _____ **JA-EBC2409**
6. XJ-S 4.0, to 194774 _____ **JA-EBC4430**
7. XJ-S 4.0, 194775-on _____ **JA-DBC10423**
8. XJ-40 3.6 (88 & 89 XJ-6) _____ **JA-EAC4867**
9. XJ-40 4.0 1990-1991 _____ **JA-EAC4866**
10. XJ-6 1995-1997 _____ **JA-LHE1520AA**
11. XJ-R, 1995-1997 _____ **JA-LNA1520BA**

Note: Most Injectors are available rebuilt. Add an "R" to the part number.

12. Fuel Injection Hose, per foot _____ **03-0086**
13. Clamp _____ **JA-EAC3215-2**

Fuel Injector Seals

14. Small "Tip" Seal _____ **LU-54739778**
15. Large "Body" Seal _____ **LU-54739776**
16. XJ-6 88-92, Kit (6 req.) _____ **JA-EAC5901**
17. XJ-6 93-97, Kit (6 req.) _____ **JA-EBC8492**

Injector Mount Collet

18. XJ-6, XJ-12, XJ-S _____ **C42077**

Cold Start Injector

19. XJ-6 _____ **LU-73180**
20. XJ-12, 1975 (NLS) _____ **LU-73139**
21. XJ-12, 1976 - On _____ **LU-73160**
21. XJ-S, Thru '79 _____ **LU-73160**
22. XJ-S, 1980 - 1988 _____ **LU-73180**
23. Gasket _____ **C42162**

Thermo Time Switch

24. XJ-6, 1978 - 1987 _____ **LU-SEB119**
25. XJ-12, 1975 - '79 _____ **LU-30491**
25. XJ-S, 1976 - '79 _____ **LU-30491**
26. XJ-S, 1980 - 1988 _____ **LU-SEB119**

Water Temperature Sensor

27. XJ-6, 1978 - 1994 _____ **LU-SNB802**
28. XJ-6, XJ-R, 1995-1997 _____ **JA-LHE1600AA**
29. XJ-12 1975 - '79 73142 _____ **LU-SNB800**
29. XJ-S, Thru '79 _____ **LU-SNB800**
30. XJ-S '80-on 5.3, 4.0, 6.0 _____ **LU-SNB802**
31. XJ-8/XJR; XK-8/XKR _____ **JA-LNA1600AA**

Intake Air Temperature Sensor

(In air cleaner intake trumpet)

32. XJ-12, Series II _____ **LU-73141**
32. XJ-S, to '79 _____ **LU-73141**
33. XJ-S, 1980 -on 4.0 & 5.3 _____ **LU-SNB801**
33. XJ-6, 1988-1994; XJS 4.0 _____ **LU-SNB801**

Oxygen Sensors

XJ-6:

34. Through 1981, 1-wire _____ **LU-73211**
35. 1981-1986, 1-wire _____ **LU-73210**
36. 1987-92 3-wire _____ **JA-DAC6907**
37. 1993-1994 _____ **JA-DBC10744**
38. 1995-1997 (3 req.) _____ **JA-LHE1682AA**
39. 1995-1997 (one req.) _____ **JA-LHE1682AA**

XJ-S:

34. 5.3 V-12 thru 1986, 1-wire _____ **LU-73211**
36. 1987-on 5.3 (3-wire) _____ **JA-DAC6907**

37. 6.0-Liter _____ **JA-DBC10744**
37. 4.0 to VIN 185820 _____ **JA-DBC10744**
40. 4.0 VIN 185821-195695 _____ **JA-DBC10862**
39. 4.0, 195696-on, 1 req. _____ **JA-LHE1682BA**
38. 4.0, 195696-on, 3 req. _____ **JA-LHE1682AA**

Throttle Potentiometer/Position Switch

41. XJ-6, 1978 - '87 _____ **LU-33703**
 42. XJ-12 & XJ-S 1975 - '79 _____ **LU-30625**
 43. XJ-S 1980-'88 to eng. 8S.61794 **03-2500**
- Note: 03-2500 is an update kit.*

44. '88-on (from 8S.61795) _____ **JA-EAC9634**

Trigger Board (On distributor)

45. XJ-S, 1976-1979 _____ **LU-60600791**

Power Resistor

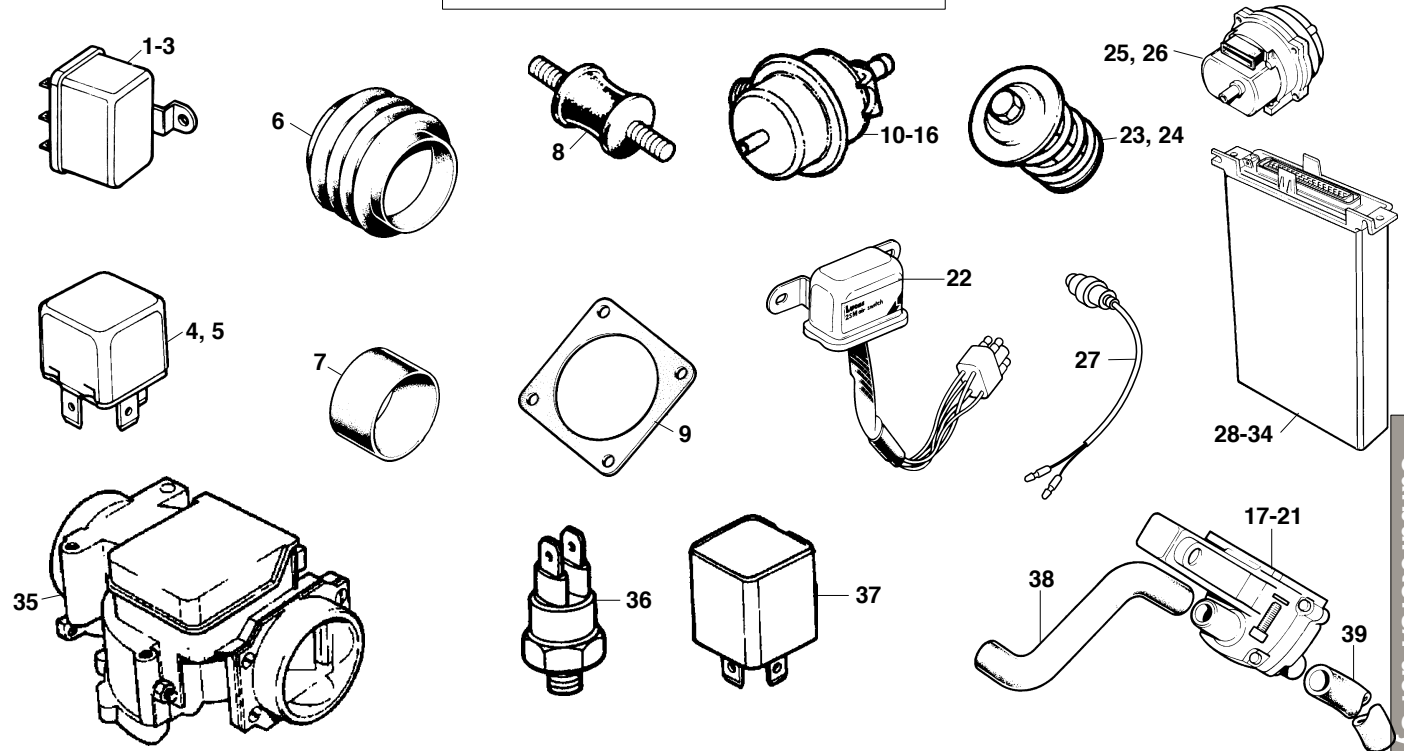
46. XJ-6, 1978 - 1987 _____ **LU-73184**
47. XJ-S, 1980 - '85 _____ **LU-73196**

Relay, Fuel Pump

48. XJ-6, 1978 - '79 _____ **LU-33394**
49. XJ-6, 1980 - 1987 _____ **LU-SRB304**
50. XJ-6, 1988-1994 _____ **JA-DBC2484**
51. XJ-6, 1995-1997 _____ **JA-LHF6703AA**
52. XJ-12 Series II _____ **LU-33355**
53. XJ-S, Thru '79 _____ **LU-33355**
49. XJ-S, 1980 - 1993 _____ **LU-SRB304**

Cold Start Relay

49. XJ-6, 1980 - '87 _____ **LU-SRB304**
52. XJ-12 & XJ-S, 1975 - '79 _____ **LU-33355**
49. XJ-S, 1980 - '81 _____ **LU-SRB304**
53. XJ-S, 1982 - 1993 _____ **LU-33407**



Carburetors/Fuel System

1977 to 1987 XJ-6, XJ-12, and XJ-S V-12 1976-on Fuel Injection

Main Relay

- 1. XJ-12, 1975 - '79 _____ **LU-33354**
- 1. XJ-S, 1976 - '79 _____ **LU-33354**
- 2. XJ-S, 1980 - '88 _____ **LU-33393**
- 3. XJ-6 1988-1994 _____ **JA-DBC2484**

Feed Back Inhibitor Relay

- 4. XJ-S, 1980 - '84 _____ **LU-SRB304**
- 5. XJ-S, 1985 - On _____ **LU-33407**

Air Flow Meter Bellows

- 6. XJ-6 _____ **JA-EAC6780**

Sleeve to Throttle Body & Filter

- 7. XJ-6, Series 2 & 3 _____ **JA-EAC1301**

Throttle Body Mount

- 8. (These are often broken. 3 req'd.)
Series II & III XJ-6 _____ **JA-EAC6806***

Gasket Under Throttle Body

- 9. XJ-6 Series II & III _____ **JA-EAC1277**

Pressure Regulator

- 10. XJ-6 Series II, XJ-6 Series III:
to 8L.139876 (1983) _____ **LU-73177**
- 11. 8L.139877-on ('83) _____ **JA-EAC4864**
- 12. XJ-6 1988-1997 _____ **JA-EBC2606**
- 13. XJ-12 (2 req.) _____ **LU-73146**
- 13. XJ-S, 1976-'79 (2 req.) _____ **LU-73146**
- 10. XJ-S, 1980-1983 _____ **LU-73177**
- 11. XJ-S, 1984-1985 _____ **JA-EAC4864**
- 14. XJ-S, (Later with 2 regulators;
8S.36655-on thru 1991):

- Inlet regulator _____ **LU-73369**

- 11. Outlet regulator _____ **JA-EAC4864**
- 15. XJ-S 1992-1993 _____ **JA-EBC3387**
- 16. XJ-S 6.0 _____ **JA-NAB3443AA**

Auxiliary (or "Extra") Air Valve

- 17. XJ-6, to 8L.98550 ('81) NLS _____ **LU-73174**
- 18. XJ-6, 8L.98550-on _____ **LU-73212**
- 19. XJ-12 _____ **LU-73192**
- 19. XJ-S, Later 1976 to '85 _____ **LU-73192**
- 20. XJ-S, 1985-87 _____ **LU-73225**
- 21. XJ-S, 1987-93 _____ **LU-73352**

Air Switching Module

- 22. XJ-6 (NLS) _____ **LU-73209**

Deceleration Valve

- 23. XJ-6, to 8L.98550 (NLS) _____ **LU-54739484**
- 24. XJ-6, 8L.98551-on (NLS) _____ **LU-54405365**
- 23. XJ-S, 1976-on (NLS) _____ **LU-54739484**

Manifold Pressure Sensor

- 25. XJ-12 1975 _____ **LU-73152R**
- 26. XJ-12, 1976-on (NLS) _____ **LU-73164**
- 25. XJ-S, early 1976 _____ **LU-73152R**
- 26. XJ-S, later 1976-1979 (NLS) _____ **LU-73164**

XJ-S Fuel Temperature Sensor

- 27. (Screws into fuel rail, engine
8S.25092-on) _____ **JA-DAC3474**

Reconditioned Control Units

(Control units cannot be returned—even if the original unit is found to be OK. Before

ordering, please record any part numbers on your old unit. Core charges apply.)

XJ-6:

- 28. Series II, Series III
to 310612 _____ **JA-DAC1209/RB**
- 29. Series III, 310613 to 321107 (49-state)
& 346687 (Calif.) _____ **JA-DAC2805/RB**
- 30. Series III, 321108-on (49-state) &
346688-on (Calif.) _____ **JA-DAC2806/RB**

XJ-S/XJ-12:

- 31. Early 1976 _____ **LU-83408/RB**
 - 32. Later 1976 & 1977 _____ **LU-83477/RB**
 - 33. 78-79 California
(Lucas 83546) _____ **JA-DAC1926/RB**
 - 34. 1982-1987 _____ **JA-DAC3586/RB**
- (Please call for units not listed.)

Reconditioned Airflow Meter

- 35. XJ-6 Ser. II & III _____ **JA-EAC3821/RB**

Thermal Switch

- 36. XJ-6 Series III _____ **JA-EAC3762**
(Rear-most switch on water rail.)

Diode Unit

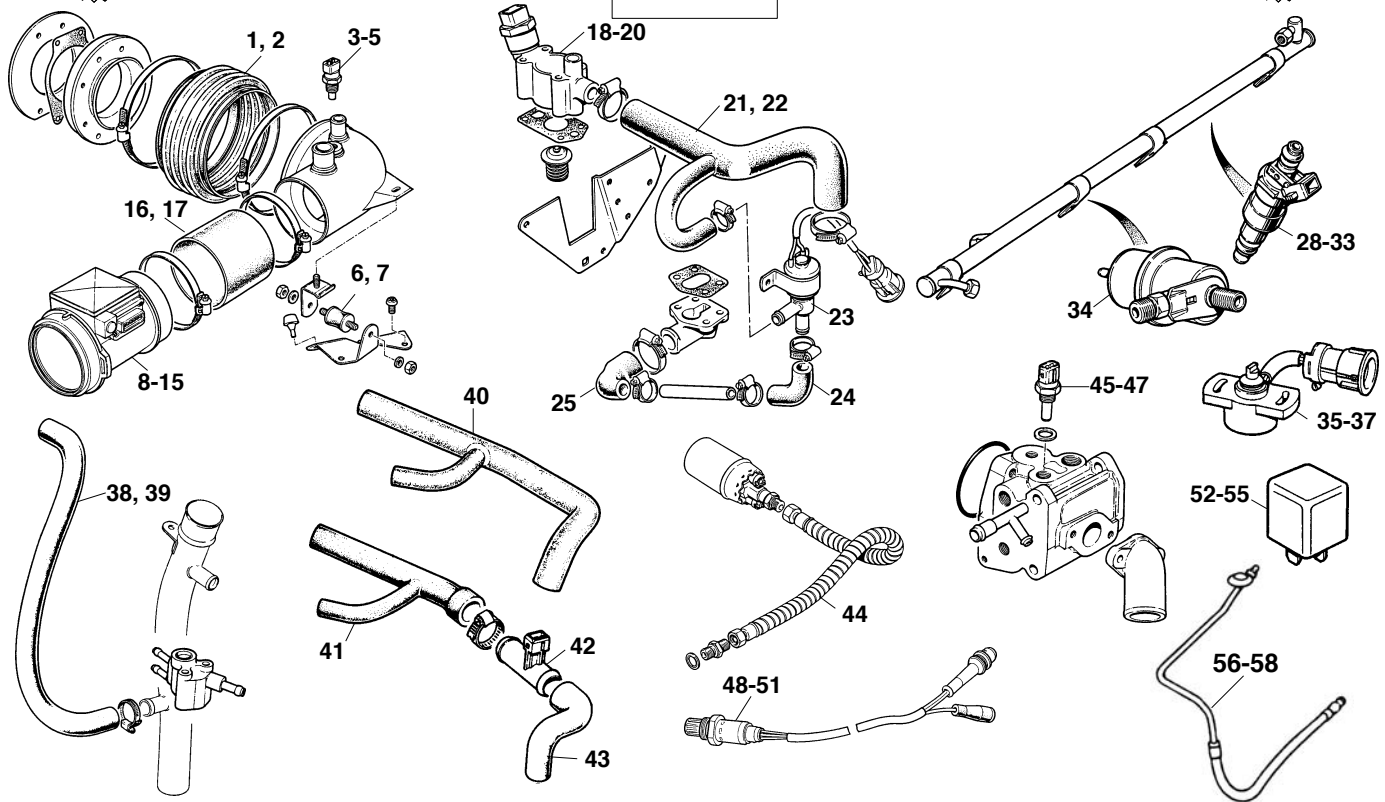
- 37. XJ-6 Series III, red, "Pektron,"
located on firewall _____ **JA-DAC1861**

Hose, XJ-6

- 38. Air distribution block to aux. air
valve _____ **JA-EAC1596**

Hose, XJ-6

- 39. Air valve to pipe _____ **JA-EAC1471**



Fuel Injection: XJ-40 1988-1994 & XJ-S 4.0 Six-Cylinder

- | | | | |
|--|----------------------|--|---------------------|
| 1. Hose, Trumpet to Airbox, XJ-40, XJ-S thru '95 | JA-EAC6370 | 29. Fuel Injector, 4.0 Liter XJ-40 | JA-EAC4866 |
| 2. Hose, Trumpet to Airbox, XJ-S '96-on | JA-EBC8715 | 30. Fuel Injector, 4.0 XJ-S to 194774 (thru 1994) | JA-EBC4430 |
| 3. Air Temperature Sensor, XJ-40 | LU-SNB801 | 31. Fuel Injector, 4.0 XJ-S from 194775 ('95-on) | JA-DBC10423 |
| 4. Air Temperature Sensor, XJ-S to VIN 195695 | JA-DBC5051 | 32. Injector Seal Kit, 88-92 (1 kit per injector) | JA-EAC5901 |
| 5. Air Temperature Sensor, XJ-S from VIN 195696 | JA-LHE1602AA | 33. Injector Seal Kit, 93-94 XJ-40, all XJ-S | JA-EBC8492 |
| 6. Mount, XJ-40 | JA-EAC6805 | 34. Fuel Pressure Regulator, All | JA-EBC2606 |
| 7. Mount, XJ-S | JA-CAC8478 | 35. Throttle Potentiometer, 3.6 Liter | JA-EAC7341 |
| Note: These are the latest "5AM" meters. They replace "3AM." | | | |
| 8. Airflow Meter, 1988-1992 | JA-DBC12517/E | 36. Throttle Potentiometer, 4.0 XJ-40, XJ-S thru '95 | JA-DBC2889 |
| 9. Airflow Meter, 1993-1994 XJ-40; 4.0 XJ-S | JA-DBC12516/E | 37. Throttle Potentiometer, XJ-S 1996-on | JA-DBC2626 |
| Note: When upgrading to the later meters, also replace 10-15. | | | |
| 10. Electrical Harness (XJ-6 only) | JA-LMD3345AA | 38. Hose, Filler Pipe to Cam Cover, XJ-40 | JA-EBC1233 |
| 11. Electrical Harness (XJ-S 4.0 only) | JA-LHD3345AA | 39. Hose, Filler Pipe to Cam Cover, XJ-S | JA-EBC4322 |
| 12. O-ring, all | JA-EAC4714 | 40. Breather Hose, All | JA-EAC7487 |
| 13. King Lead and Ignition Coil Cover (XJ-6 only) | JA-DAC7811/7 | 41. Hose, Filler Pipe to Element, All | JA-EAC7418 |
| 14. EMS Relay (blue), as req., date code prior to 183 | JA-DAC7686 | 42. Heater Element, All | JA-EAC7991 |
| 15. EMS Relay (violet), as req., date code prior to 183 | JA-DAC7687 | 43. Hose, Element to Restrictor, All | JA-EAC7447 |
| 16. Air Duct, XJ-40 | JA-EAC5166-2 | 44. Hose Assy., Pump to Filter, 3.6 XJ-40 Only | JA-CBC2576 |
| 17. Air Duct, XJ-S | JA-EAC1301 | 45. Water Temperature Sensor, all XJ-40 | LU-SNB802 |
| 18. Idle Air Valve, 3.6 XJ-40 to engine 143565 | JA-EBC1789 | 46. Water Temp. Sensor, XJ-S to Eng. B.1011989 | LU-SNB802 |
| 19. Idle Air Valve, 3.6 XJ-40 engine, 143566-on | JA-EBC2675 | 47. Water Temp. Sensor, XJ-S from B.101190 | JA-LHE1600AA |
| 20. Idle Air Valve, 4.0 XJ-40 and XJ-S | JA-DBC5727 | 48. Oxygen Sensor, XJ-40 to end of 1992 | JA-DAC6907 |
| 21. Hose, Air Valve to Manifold, 3.6 Liter XJ-40 | JA-EAC8307 | 49. Oxy. Sensor, 1993-on XJ-40, XJ-S thru '92 | JA-DBC10744 |
| 22. Hose, Air Valve to Air Box, 4.0 XJ-40 | JA-EBC1481 | 50. Oxy. Sensor, XJ-S 185821-195695 | JA-DBC10862 |
| 23. Supplementary Air Valve, 3.6 Liter XJ-40 | LU-73298 | 51. Oxy. Sensor, XJ-S 195696-on, 4 req. | JA-LHE1682BA |
| 24. Hose, Air Valve to Air Pipe, 3.6 Liter XJ-40 | JA-EAC6560 | 52. Fuel Pump Relay, XJ-40 | JA-DBC2484 |
| 25. Hose, Air Pipe to Adaptor, 3.6 Liter XJ-40 | JA-EAC6254 | 53. Fuel Pump Relay, XJ-S | LU-SRB304 |
| 26. Stepper Motor, 3.6 Liter XJ-40 | JA-JLM1741 | 54. Main Relay, XJ-40 | JA-DBC2484 |
| 27. Stepper Motor, 4.0 XJ-40 and XJ-S | JA-JLM12185 | 55. Main Relay, XJ-S | JA-AGU1070 |
| 28. Fuel Injector, 3.6 Liter XJ-40 | JA-EAC4867 | 56. Fuel Feed Hose with Damper, XJ-40 thru '90 | JA-EBC9811 |
| | | 57. Fuel Feed Hose with Damper, XJ-40 '91 & '92 | JA-EBC9813 |
| | | 58. Fuel Feed Hose with Damper, XJ-40 '93-on | JA-EBC10330 |